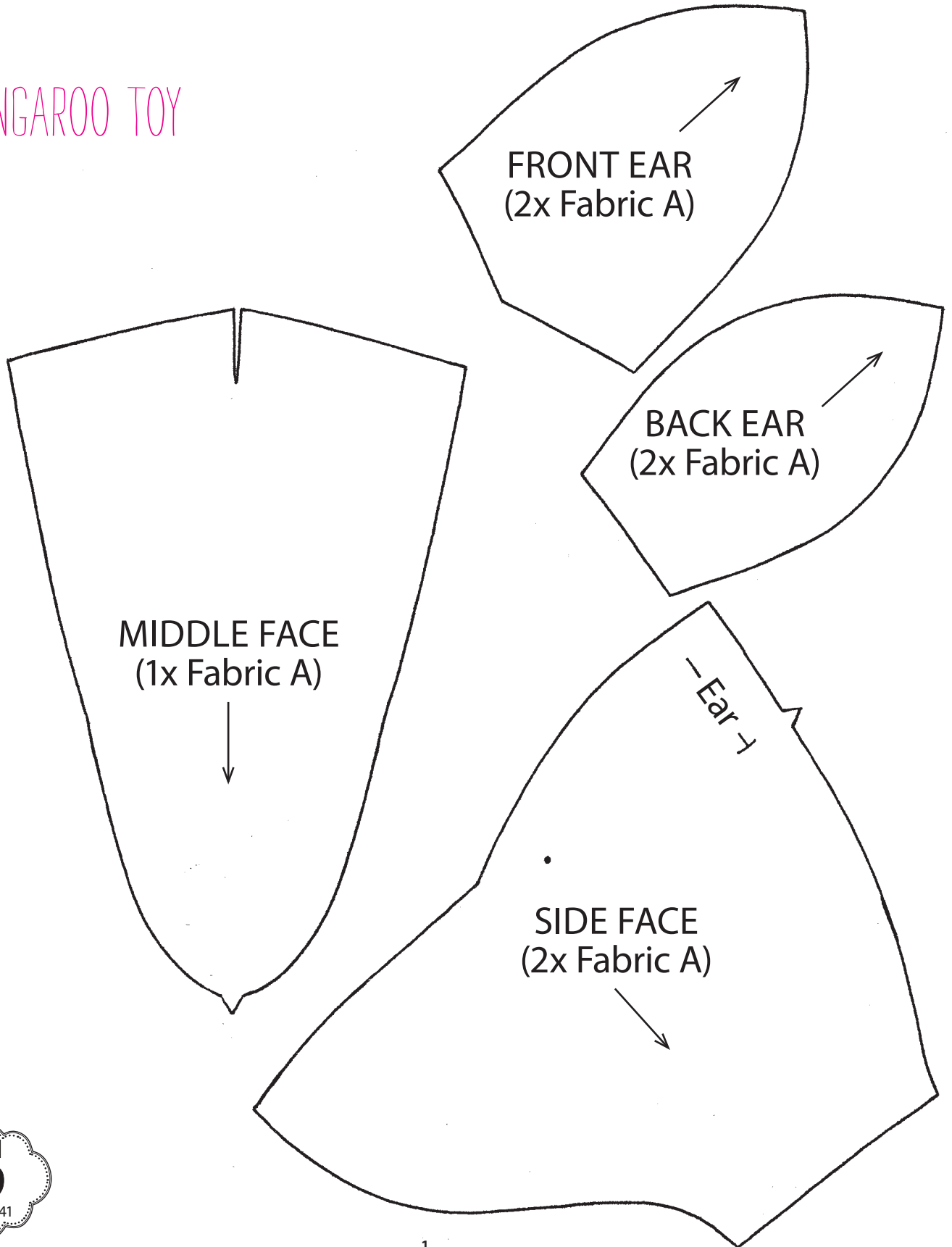
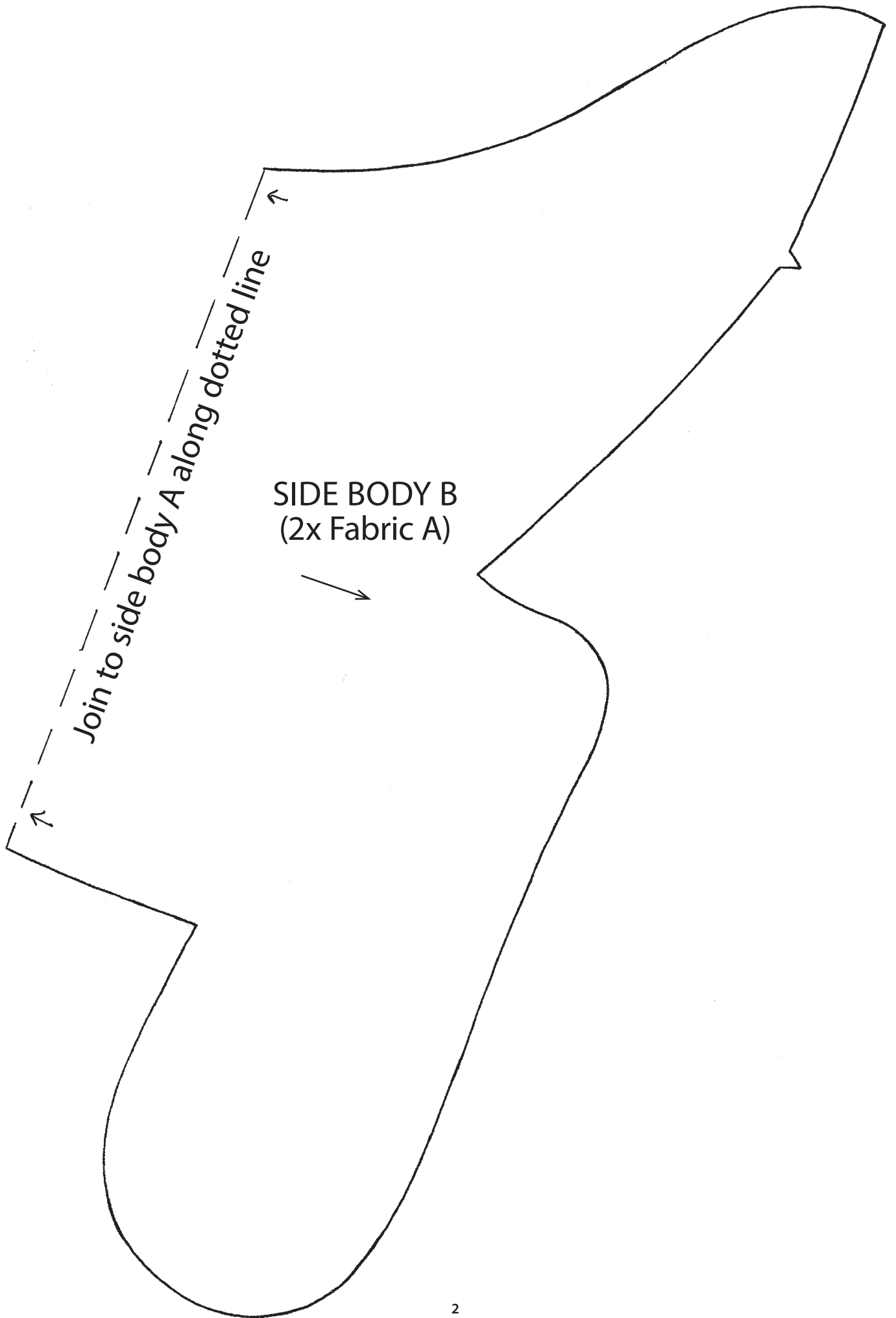


TEMPLATES

Here are the templates you will need to make some of the projects in *Simply Sewing* issue 41.

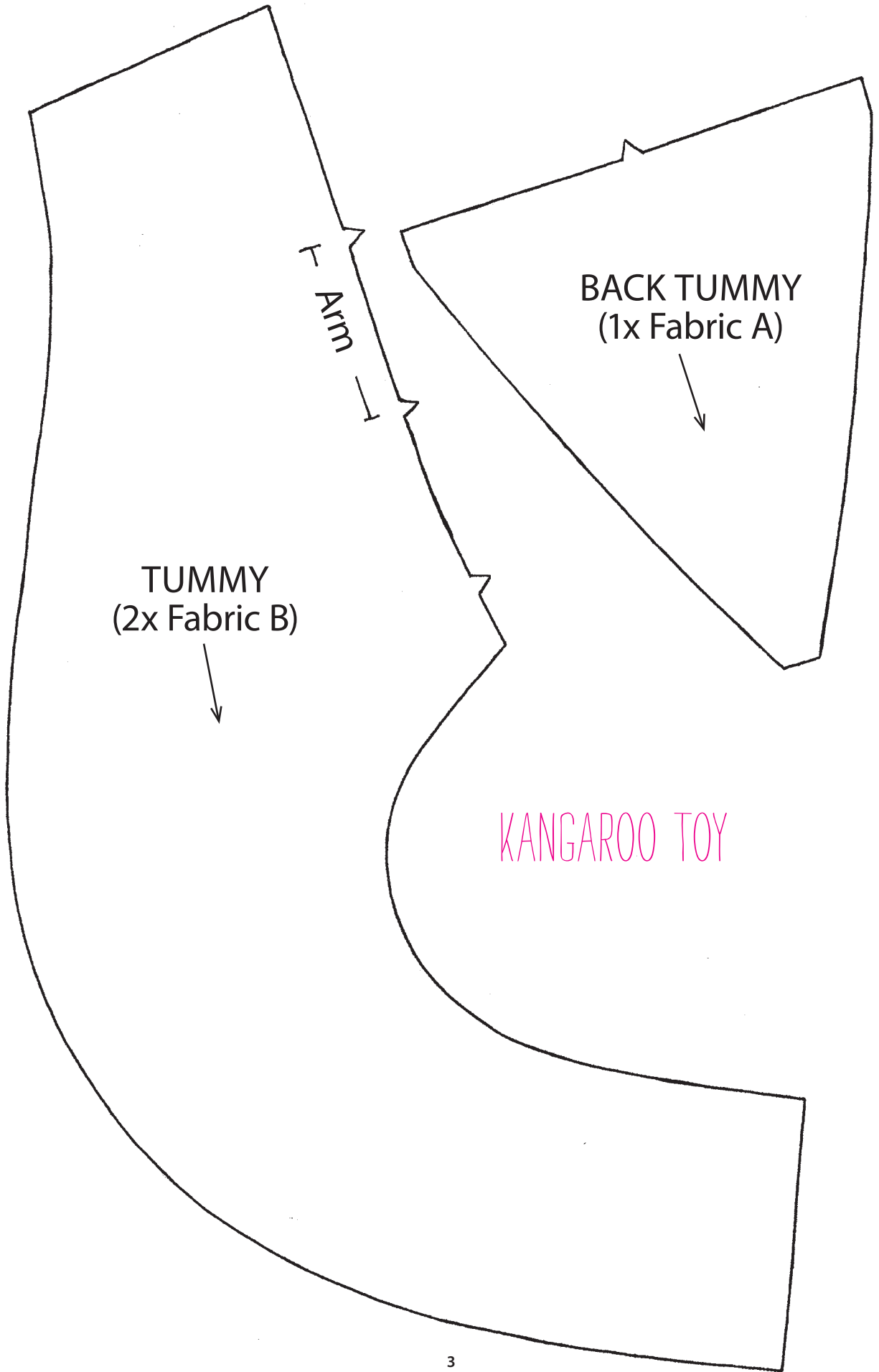
KANGAROO TOY





Join to side body A along dotted line

SIDE BODY B
(2x Fabric A)

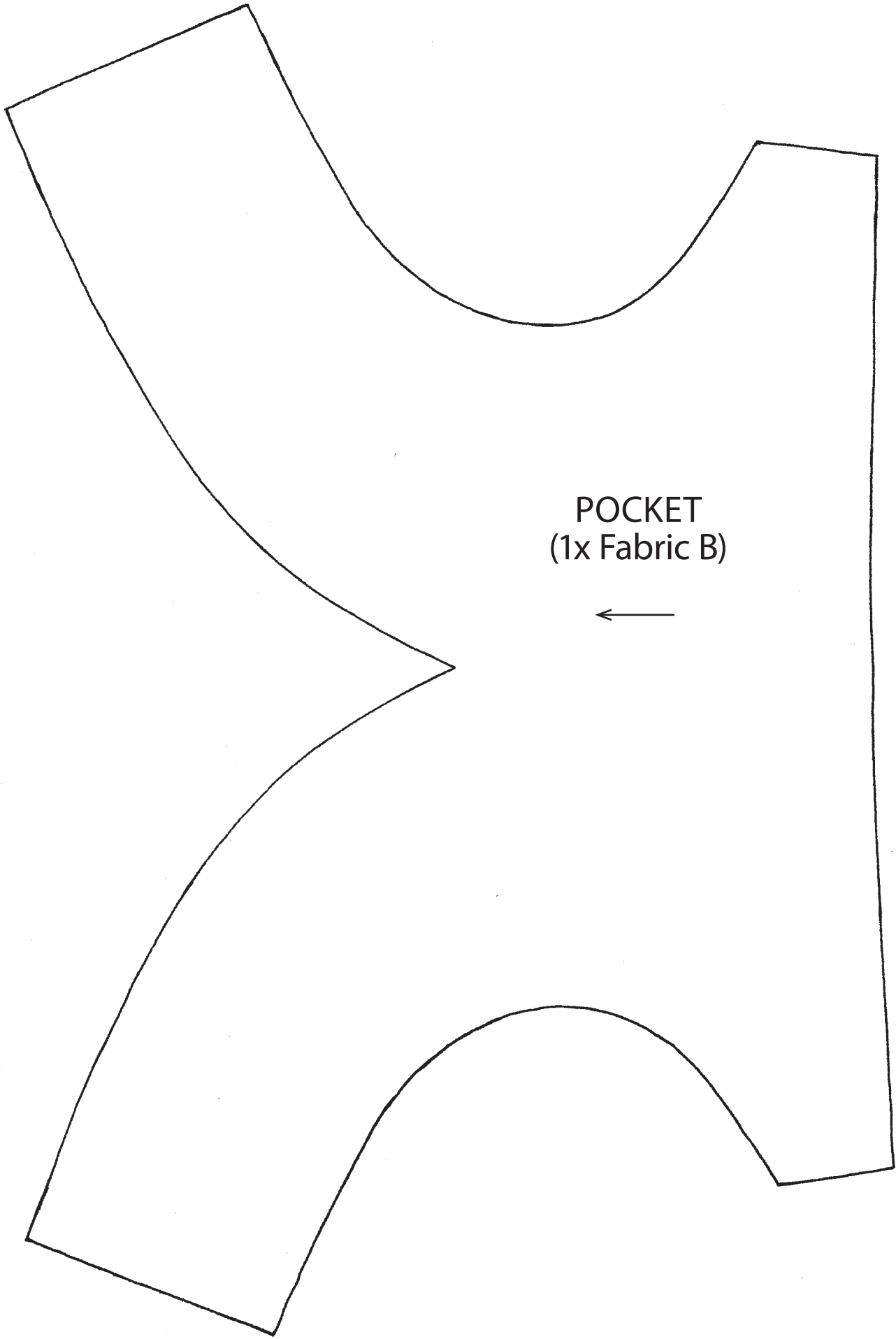


TUMMY
(2x Fabric B)

BACK TUMMY
(1x Fabric A)

Arm

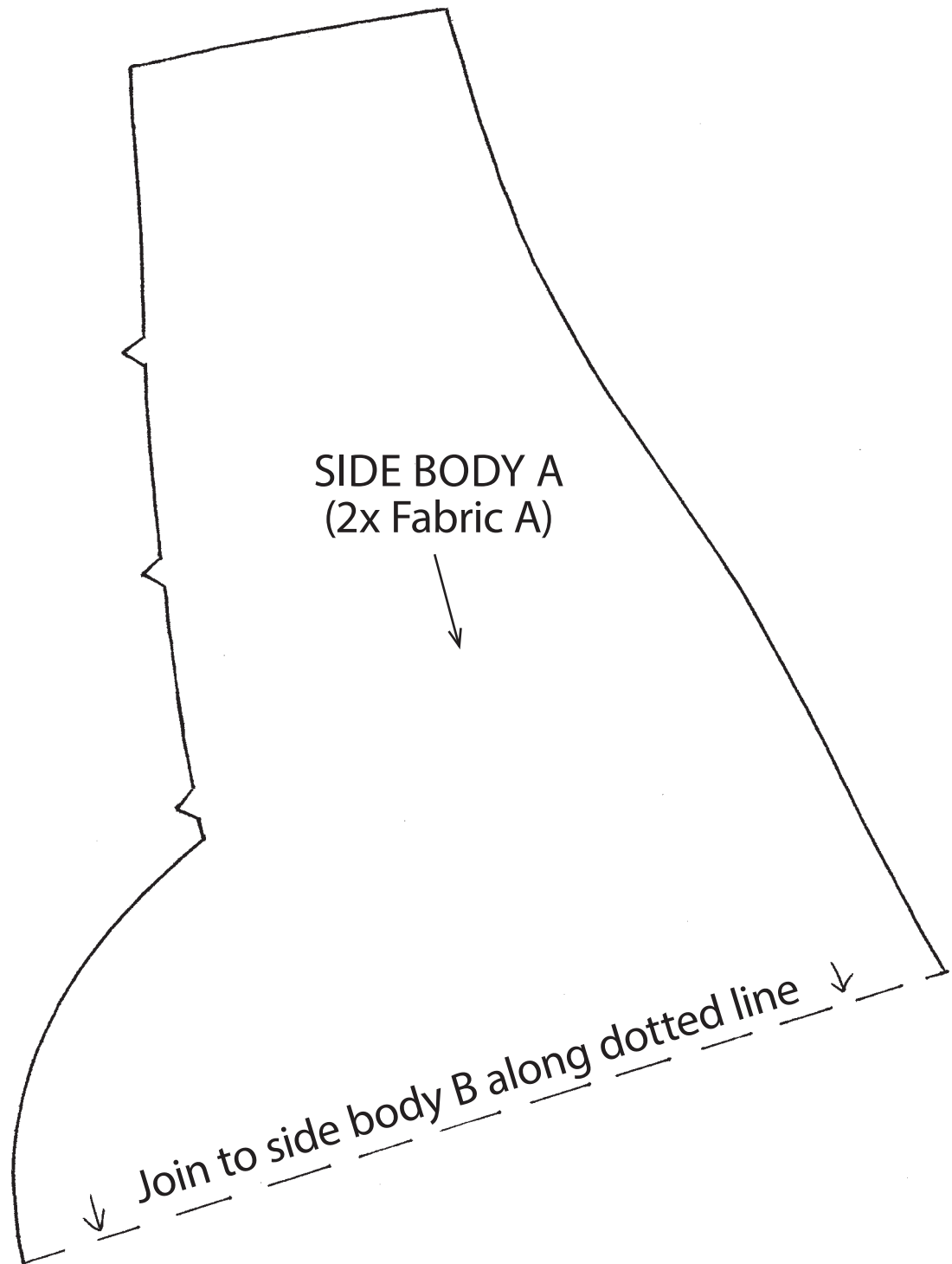
KANGAROO TOY



POCKET
(1x Fabric B)



KANGAROO TOY



KANGAROO TOY

BACK HEAD
(2x Fabric A)

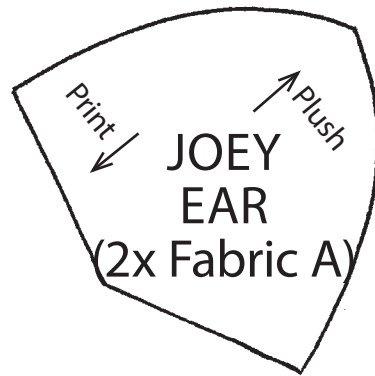
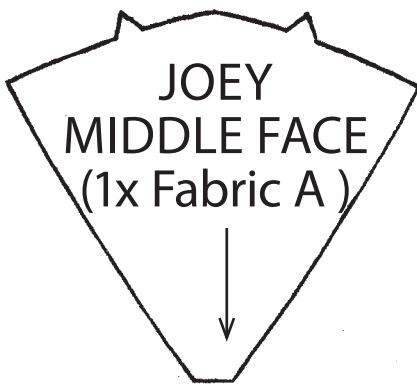


ARM
(4x Fabric A)

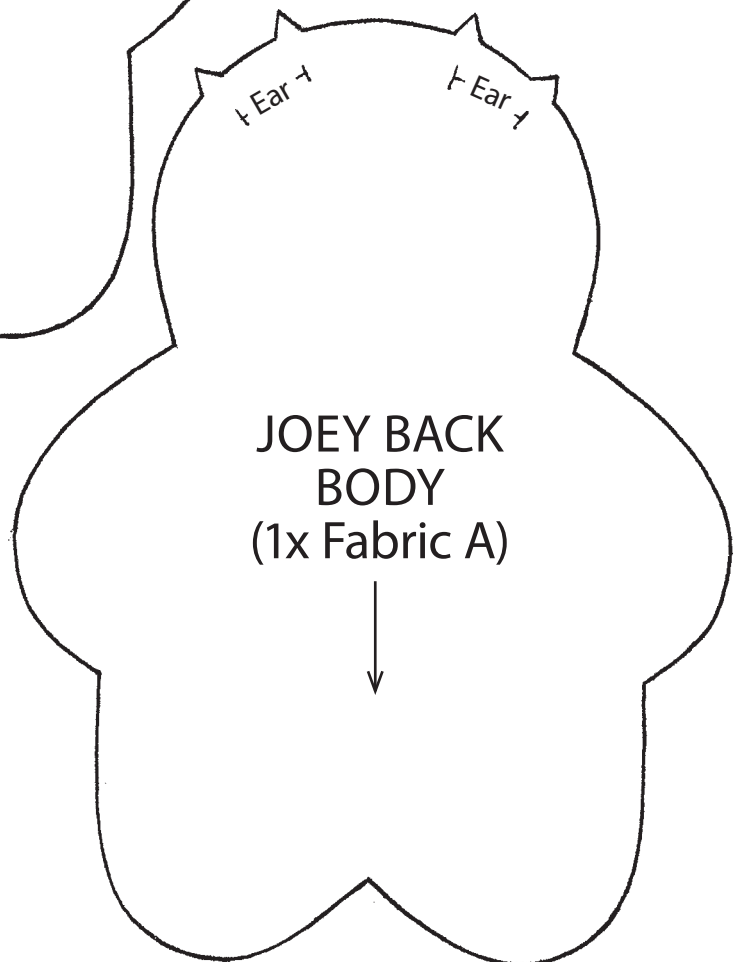
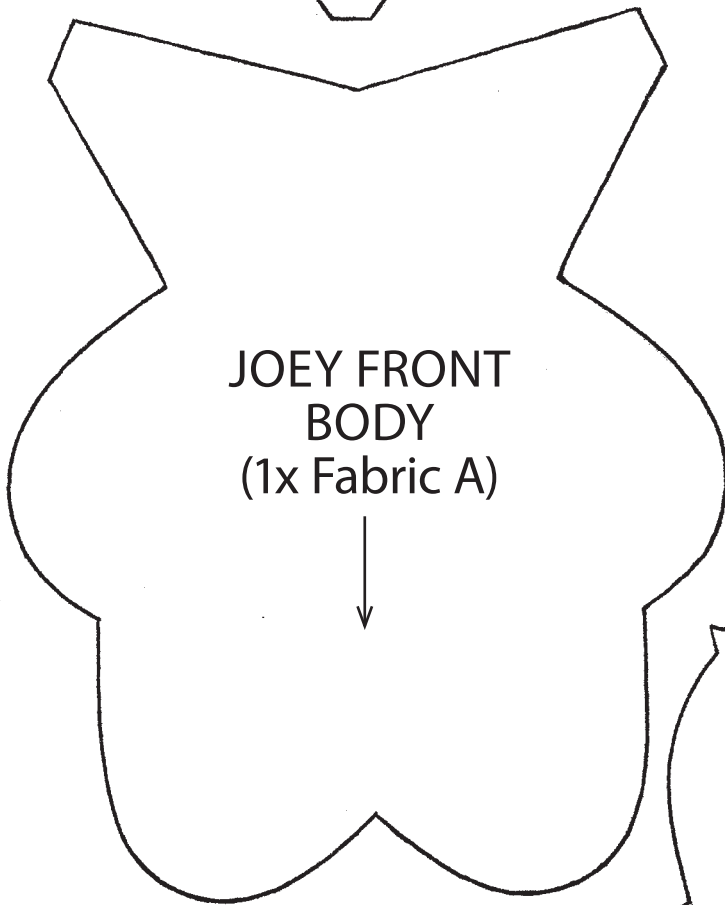


INNER LEG
(2x Fabric A)

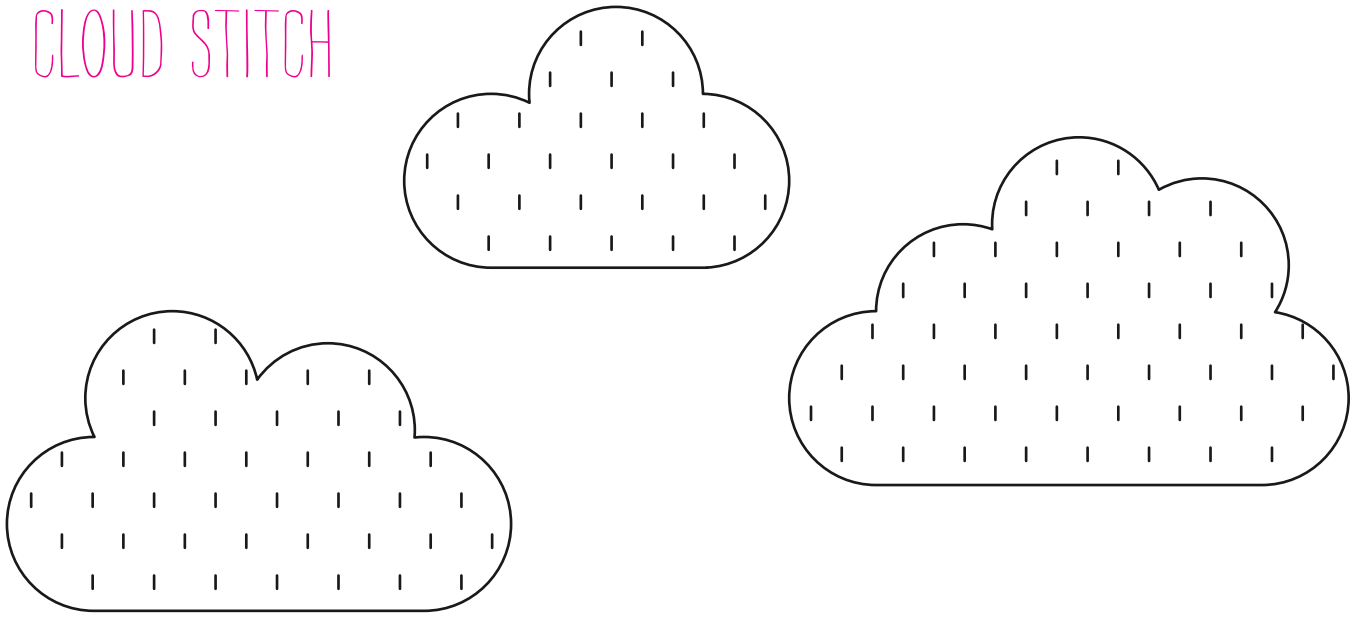




KANGAROO TOY



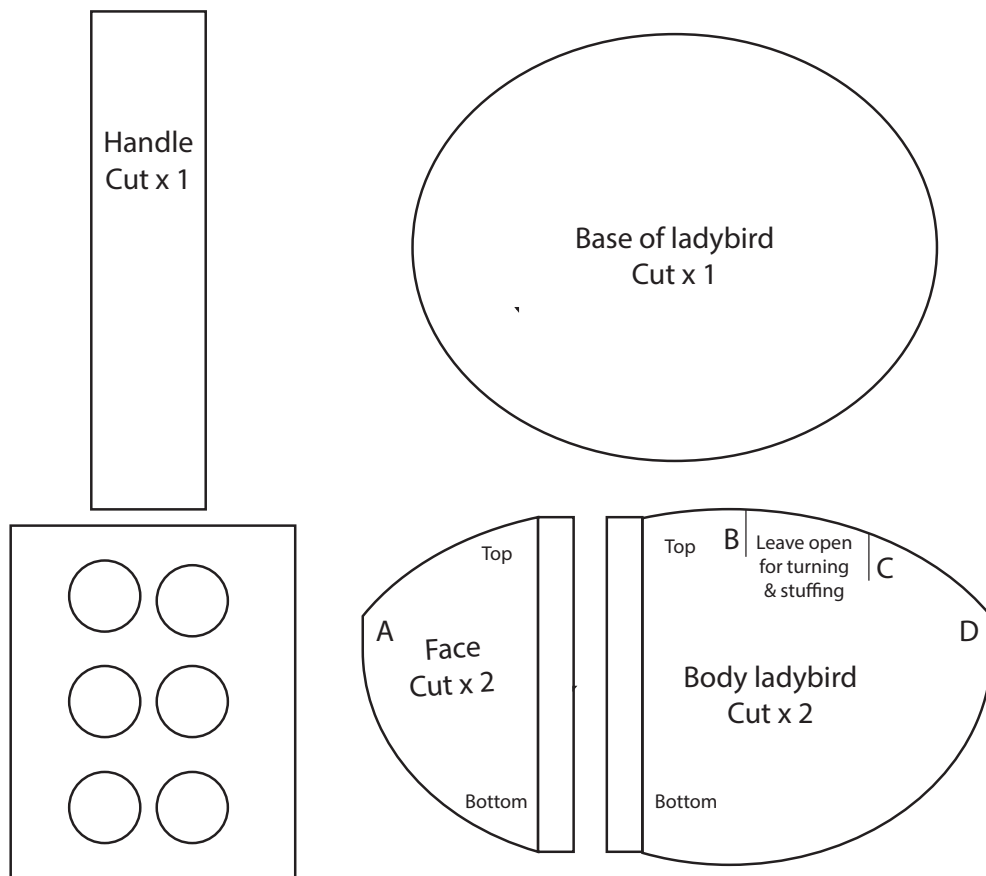
CLOUD STITCH

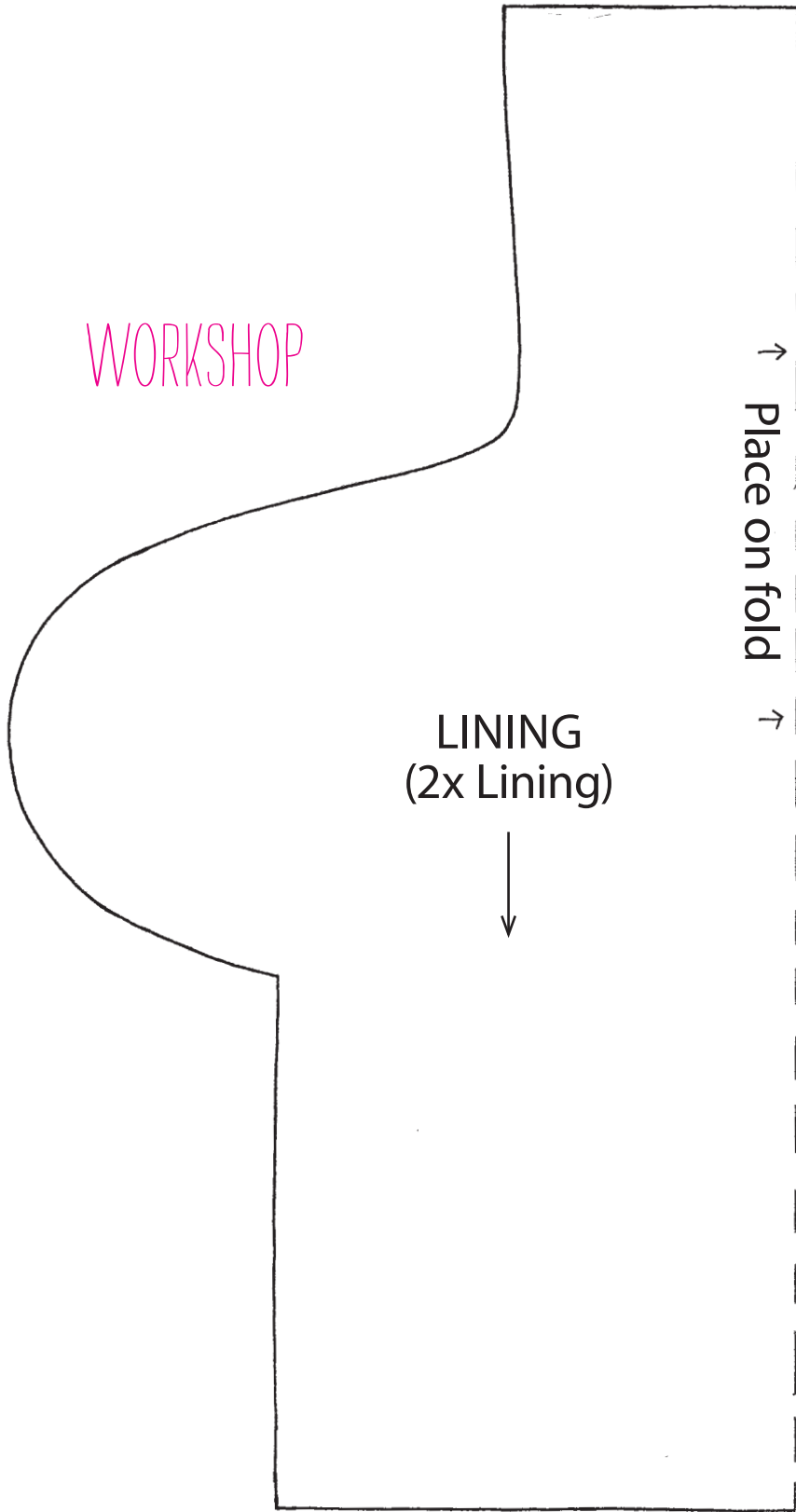


BEE BLOUSE

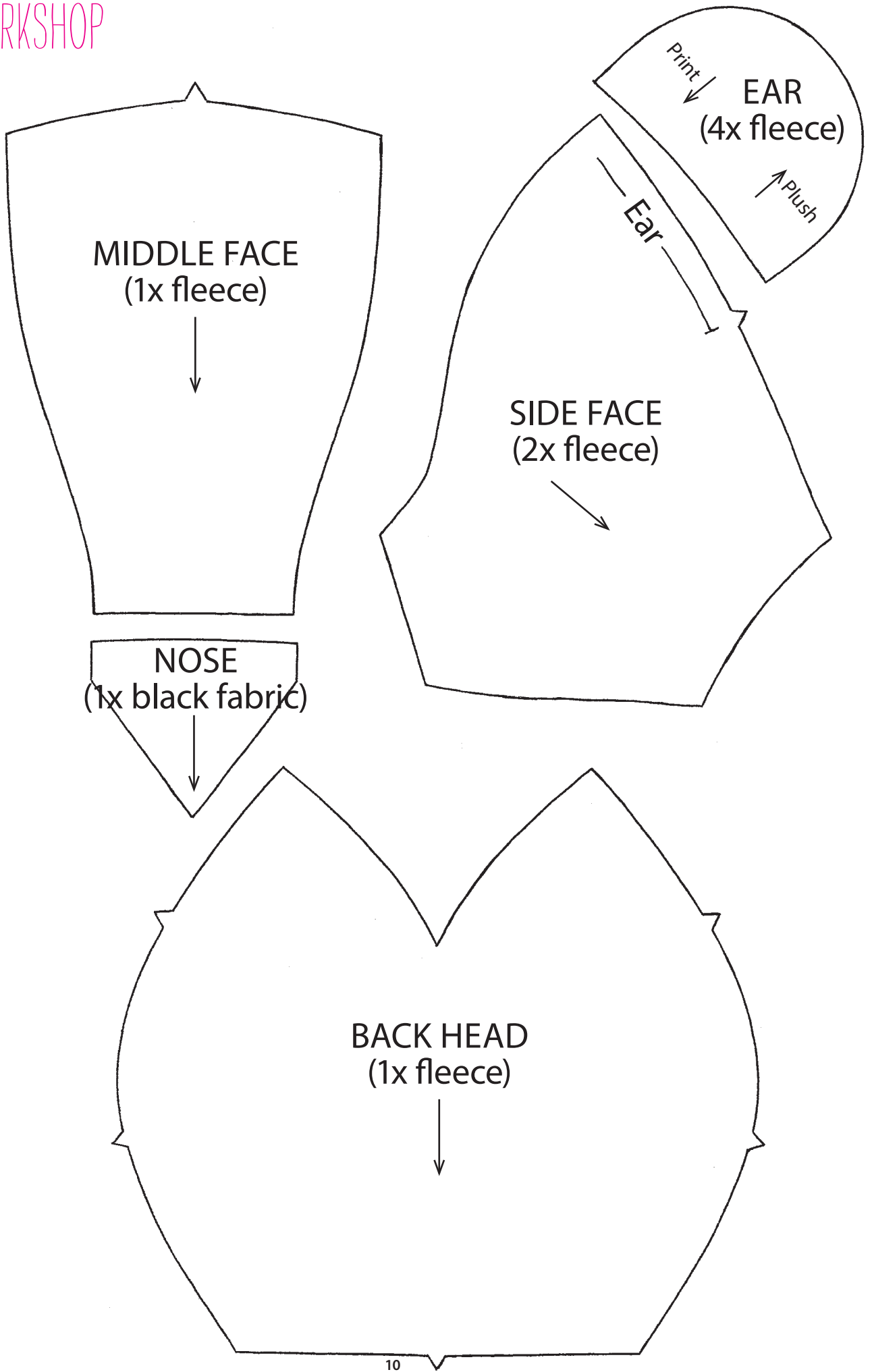


FAST FAT QUARTER

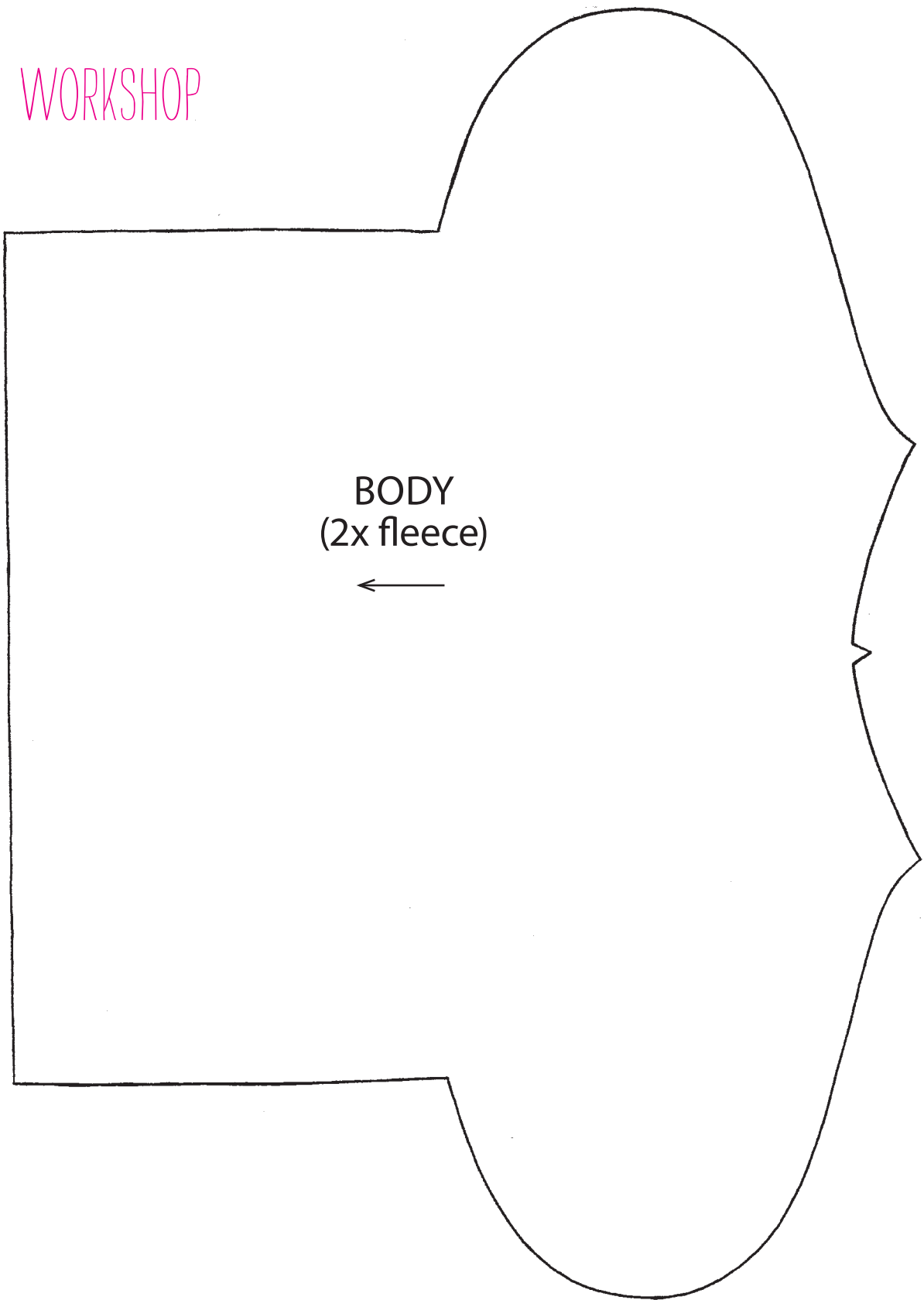




WORKSHOP



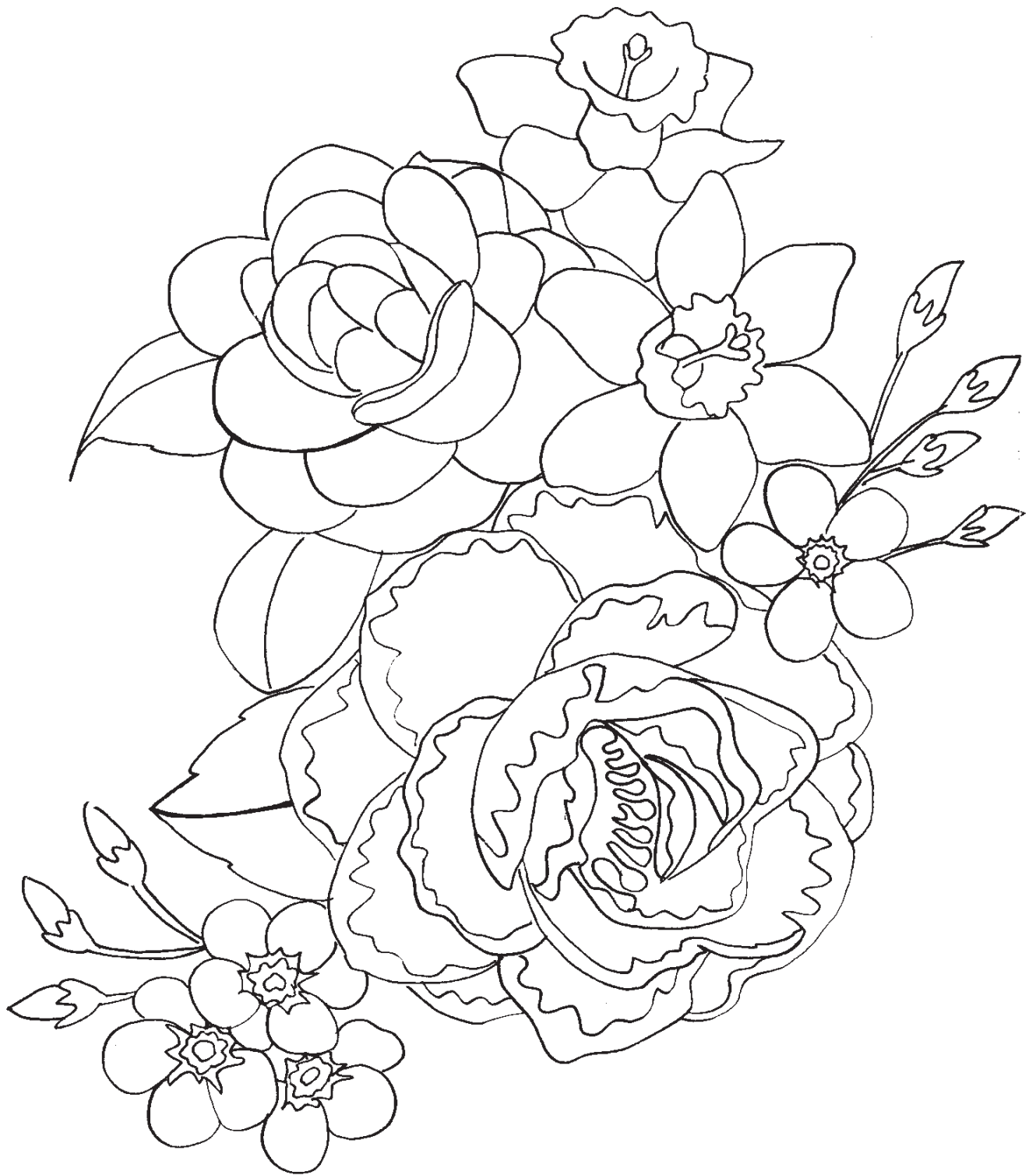
WORKSHOP



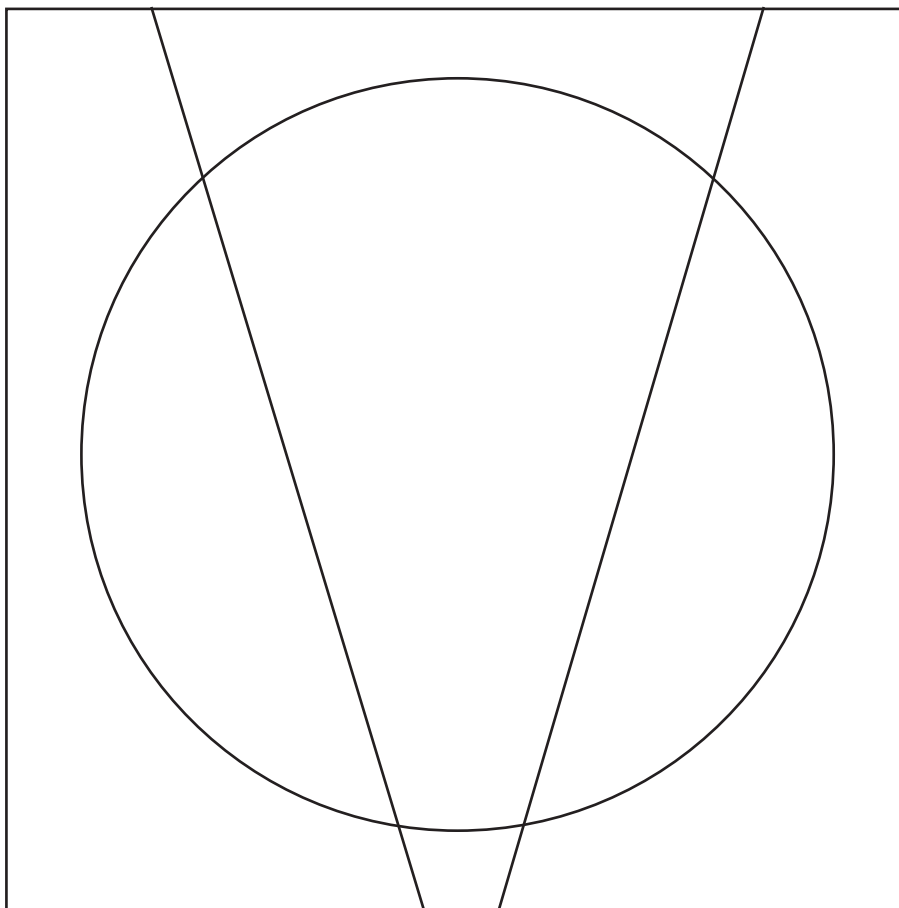
BODY
(2x fleece)



EMBROIDERED BAG



COASTERS



Simply
Sewing
FRESH IDEAS WITH FABRIC

Thank you for making these projects from *Simply Sewing*.
The copyright for these templates belongs to the designer of the project. They work hard to create projects for you to enjoy, so please don't re-sell or distribute their work without permission.
Please do not make any part of the templates or instructions available to others through your website or a third party, or copy it multiple times without our permission.
Copyright law protects creative work and unauthorised copying is illegal.
We appreciate your help.