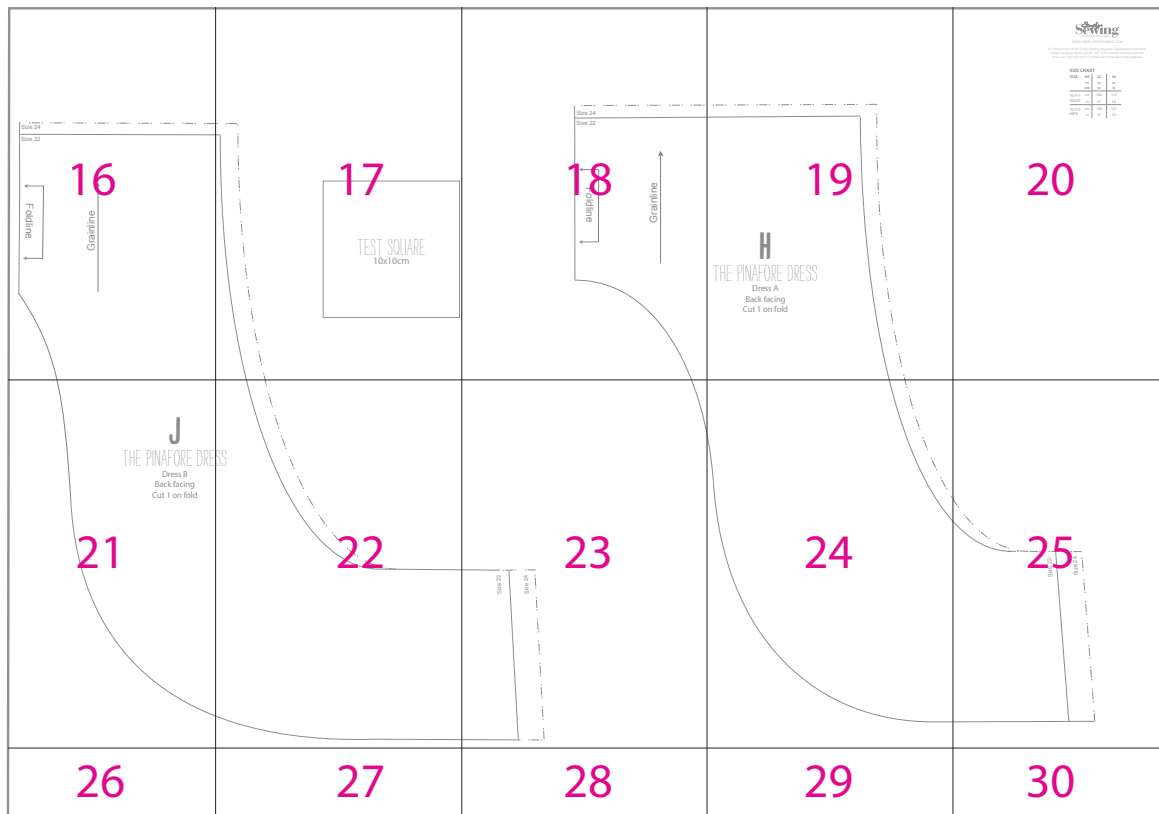
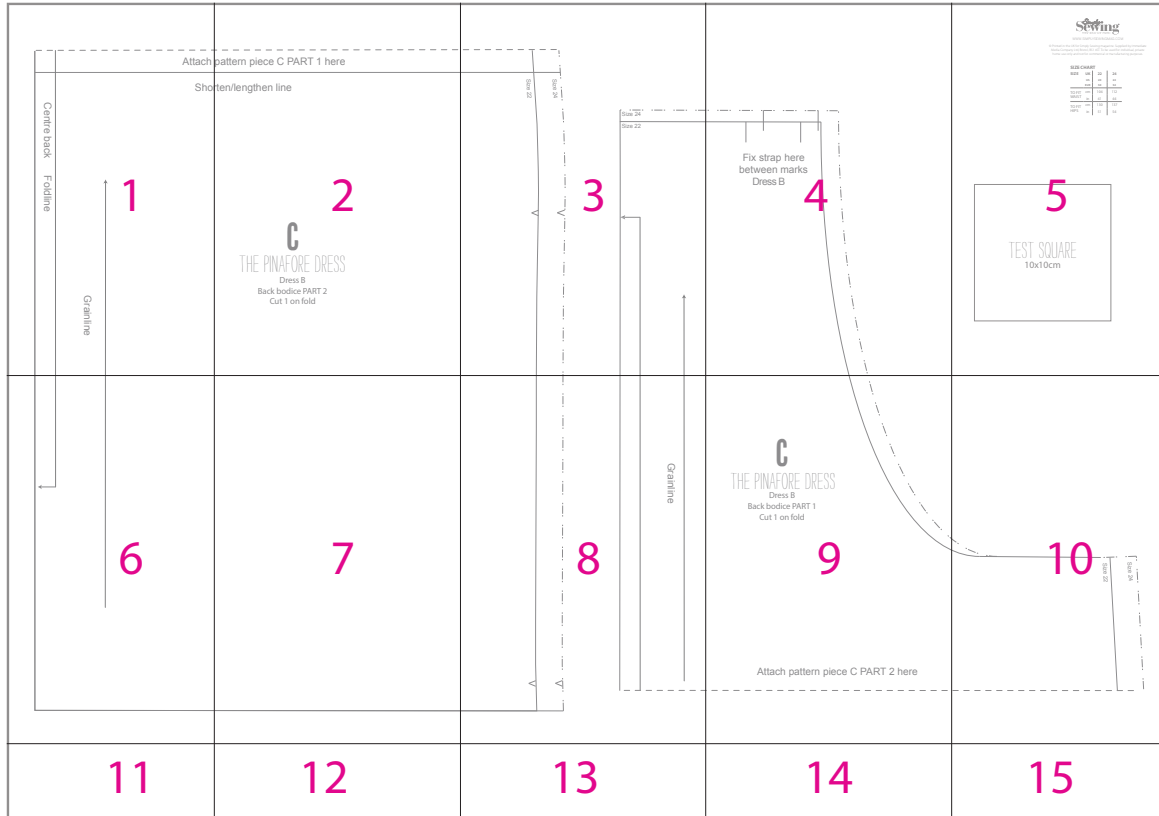


THE PINAFORE DRESS

HOW TO PRINT THIS PATTERN

Print out this 30-page PDF on to A4 paper. Trim away the shaded border from each page and position the pages as below to assemble the pattern...



Attach

Shc

Centre back

Foldline



Grainline

pattern piece C PART 1 here

orten/lengthen line

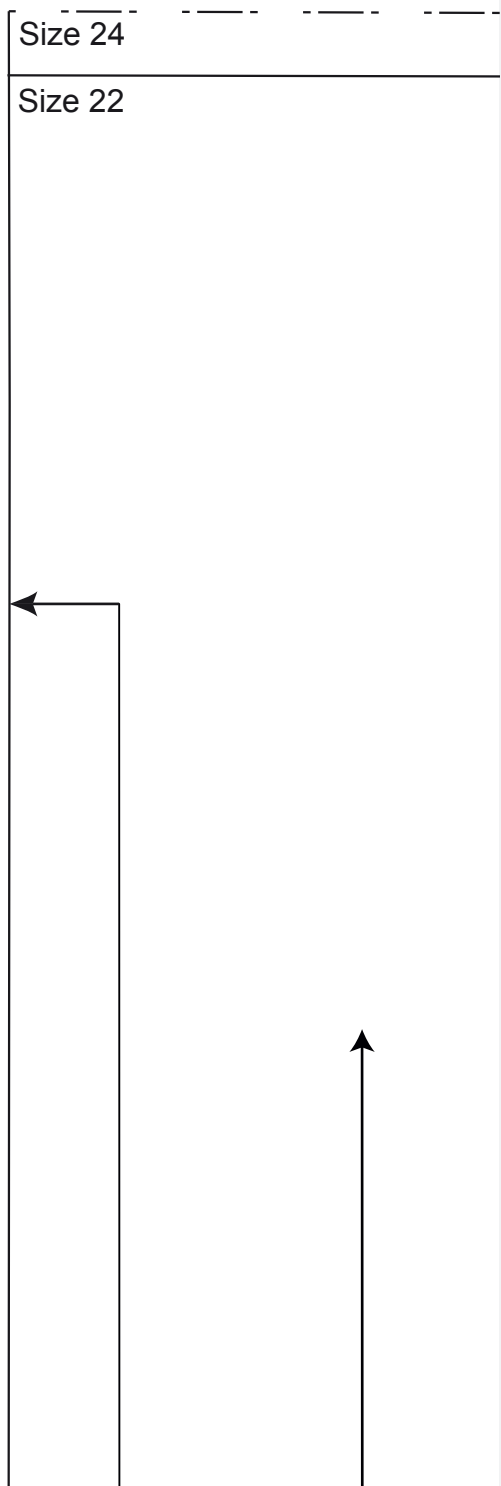
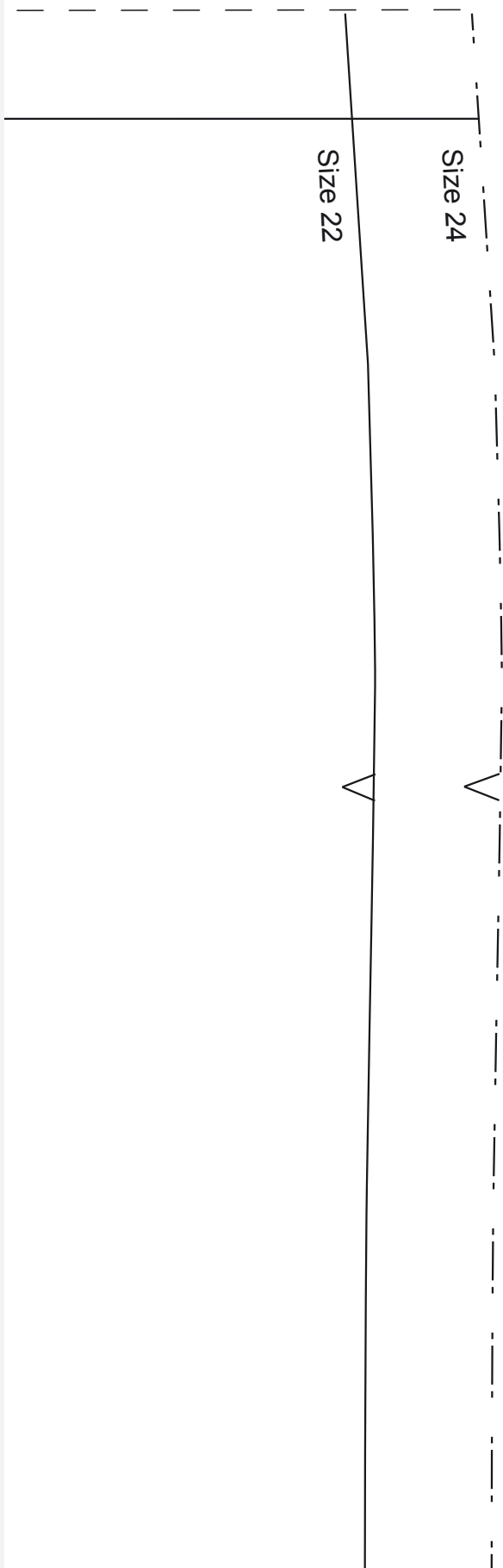
C

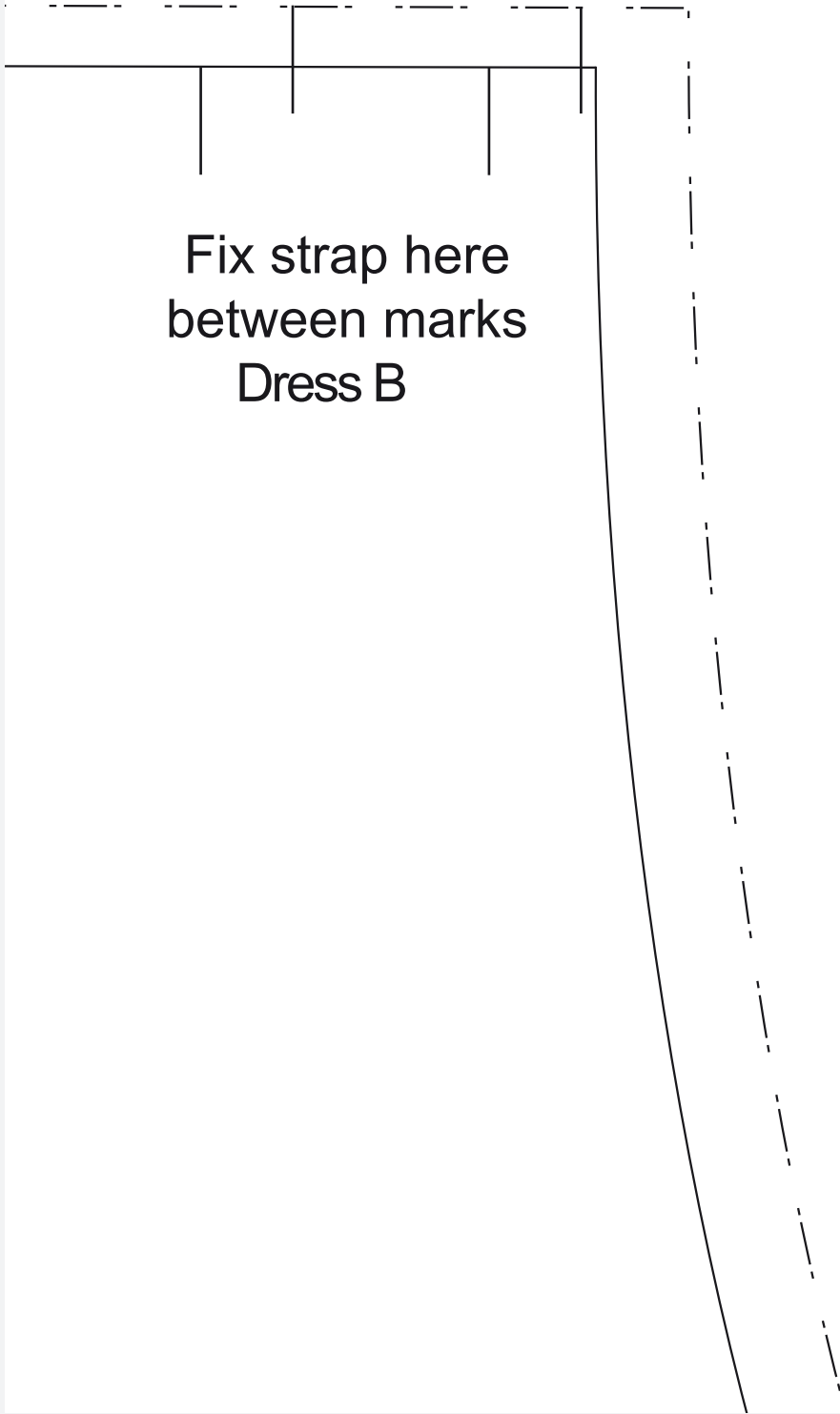
THE PINAFORE DRESS

Dress B

Back bodice PART 2

Cut 1 on fold





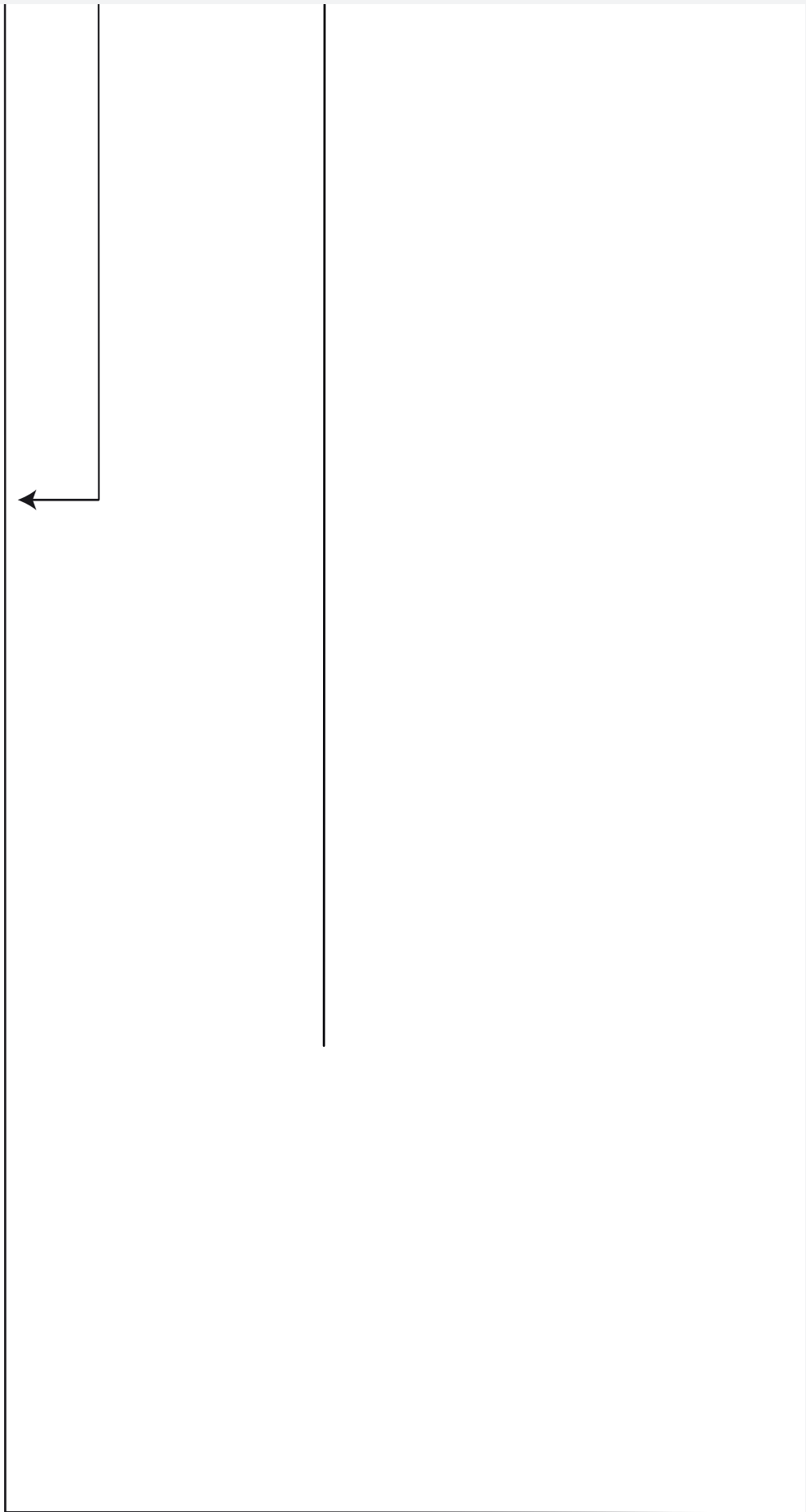
Fix strap here
between marks
Dress B

© Printed in the UK for Simply Sewing magazine. Supplied by Immediate Media Company Ltd, Bristol, BS1 4ST. To be used for individual, private home use only and not for commercial or manufacturing purposes.

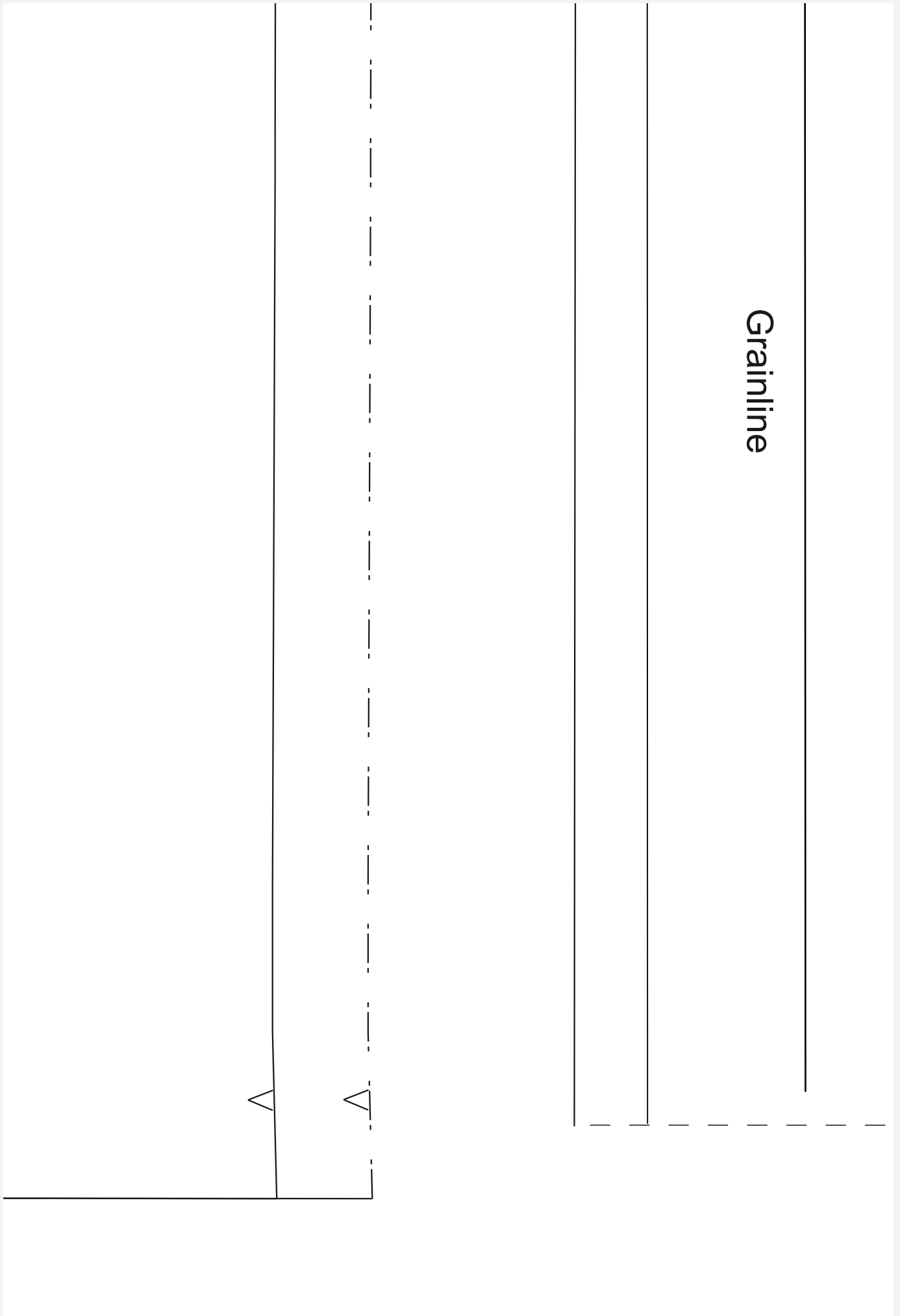
SIZE CHART

SIZE	UK	22	24
	US	20	22
	EUR	50	52
TO FIT WAIST	cm	104	112
	in	41	44
TO FIT HIPS	cm	130	137
	in	51	54

TEST SQUARE
10x10cm



Grainline



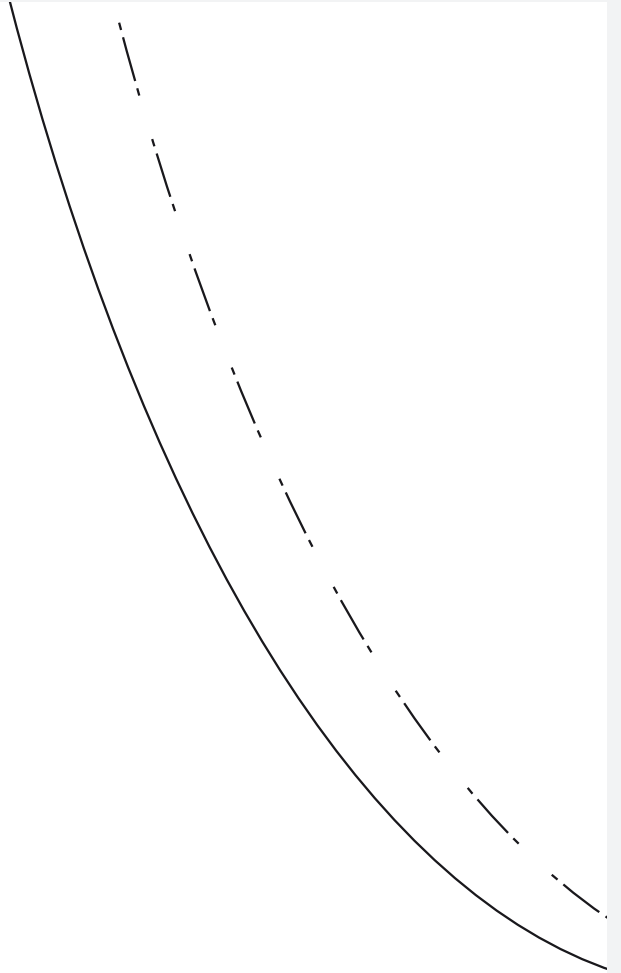
C

THE PINAFORE DRESS

Dress B

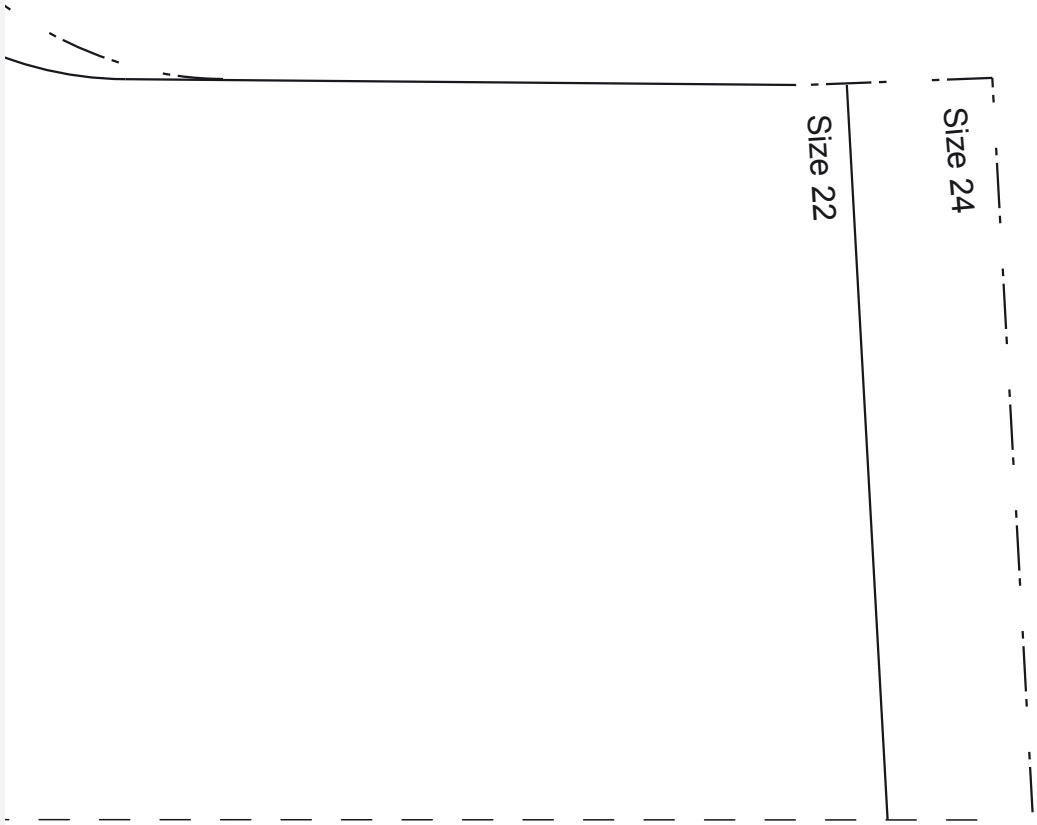
Back bodice PART 1

Cut 1 on fold



Attach pattern piece C PART 2 here

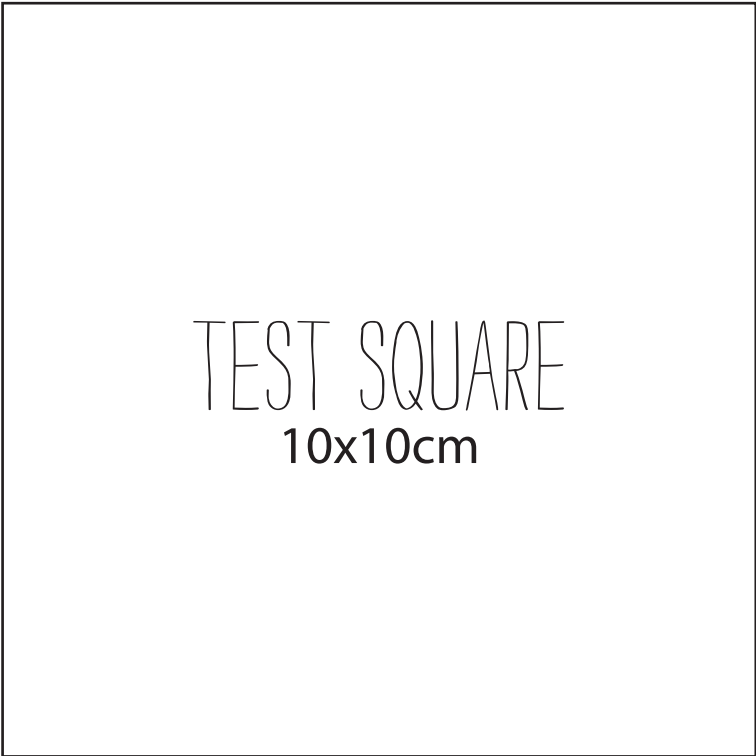
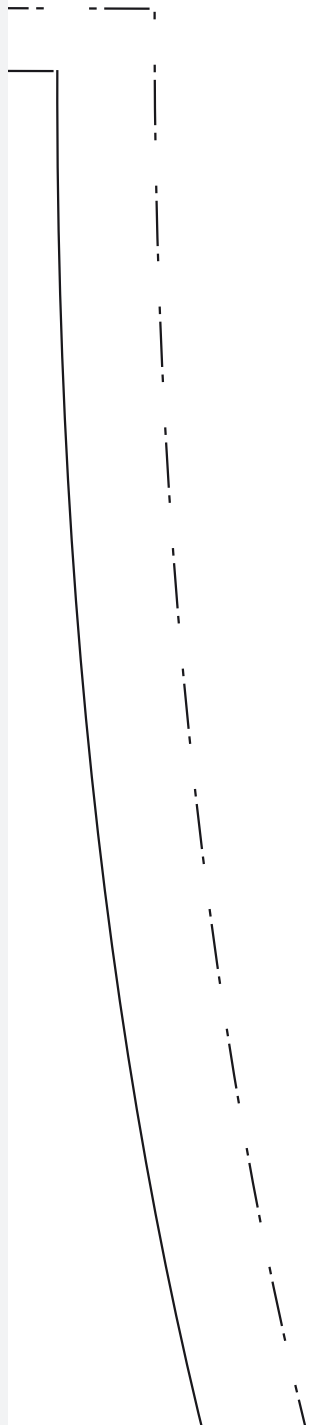




Size 24

Size 22





Size 24

Size 22





H

THE PINAFORE DRESS

Dress A
Back facing
Cut 1 on fold

© Printed in the UK for Simply Sewing magazine. Supplied by Immediate Media Company Ltd, Bristol, BS1 4ST. To be used for individual, private home use only and not for commercial or manufacturing purposes.

SIZE CHART

SIZE	UK	22	24
	US	20	22
	EUR	50	52
TO FIT WAIST	cm	104	112
	in	41	44
TO FIT HIPS	cm	130	137
	in	51	54

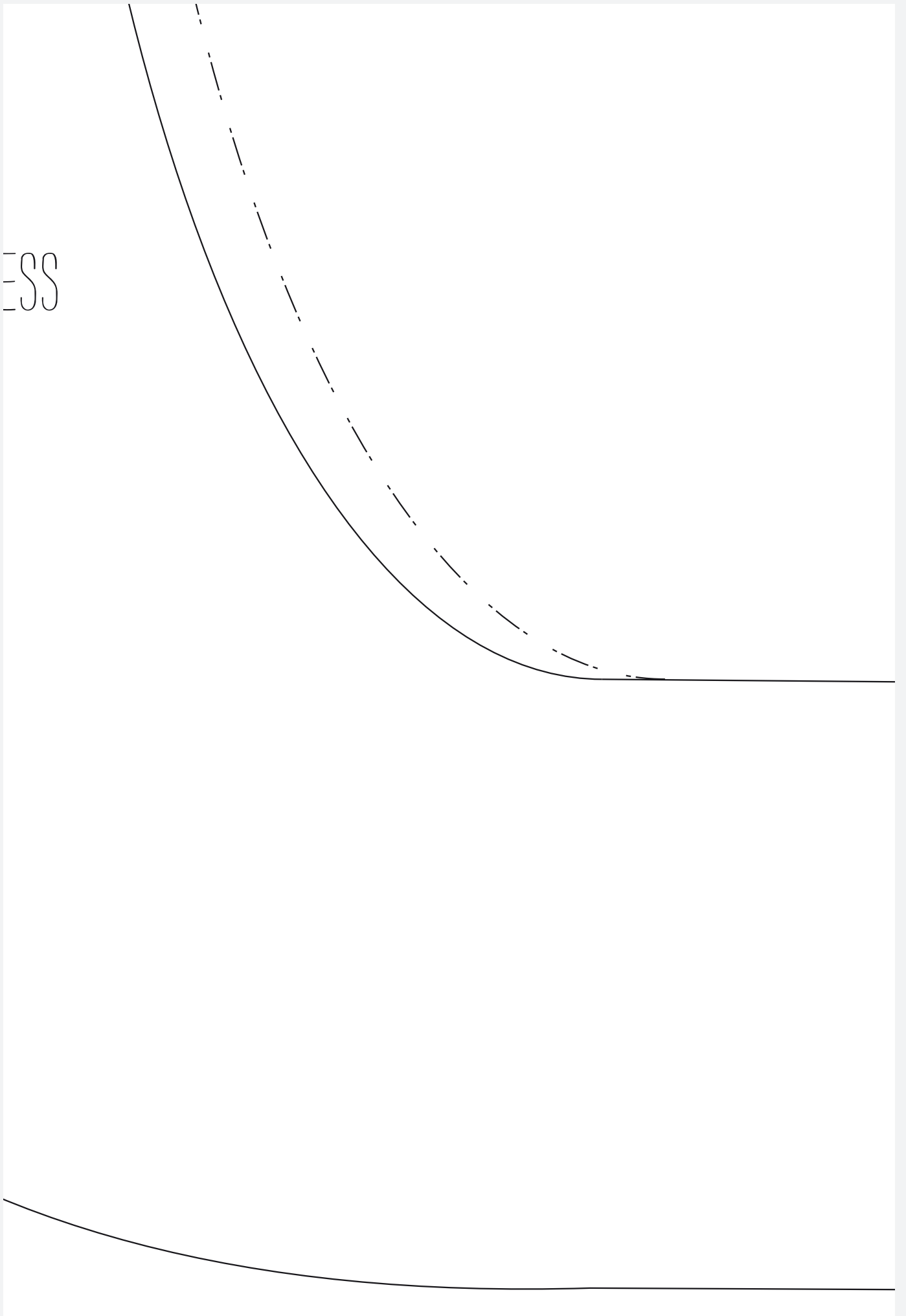


J

THE PINAFORE DRESS

Dress B
Back facing
Cut 1 on fold

ESS



Size 22

Size 24

