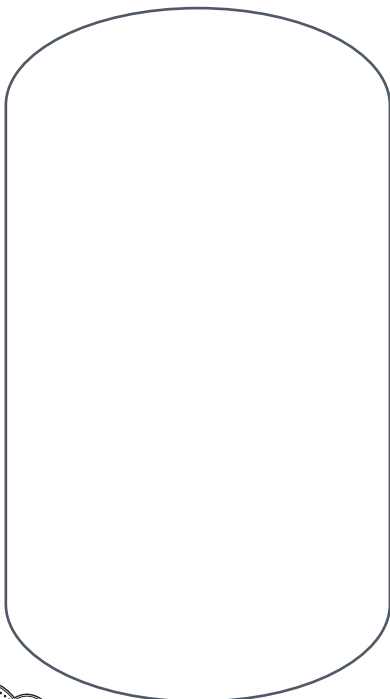
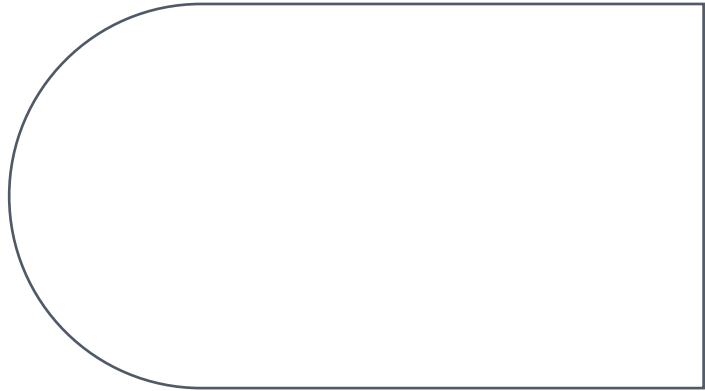
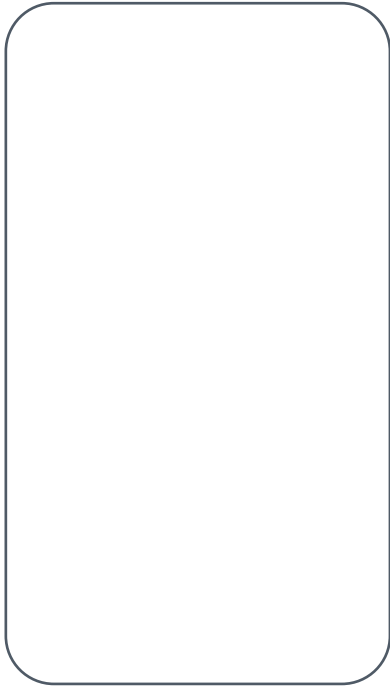


TEMPLATES

Here are the templates you will need to make some of the projects in the Handmade Christmas project book with *Simply Sewing* issue 48.

GIFT TAGS





REINDEER CUSHION

Piece A
(Join to Piece B and C
along dashed line)

1x patchwork
1x backing fabric

REINDEER CUSHION

Piece B

(Join to Piece A and C
along dashed line)

REINDEER CUSHION

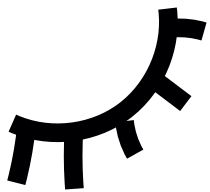
Piece D

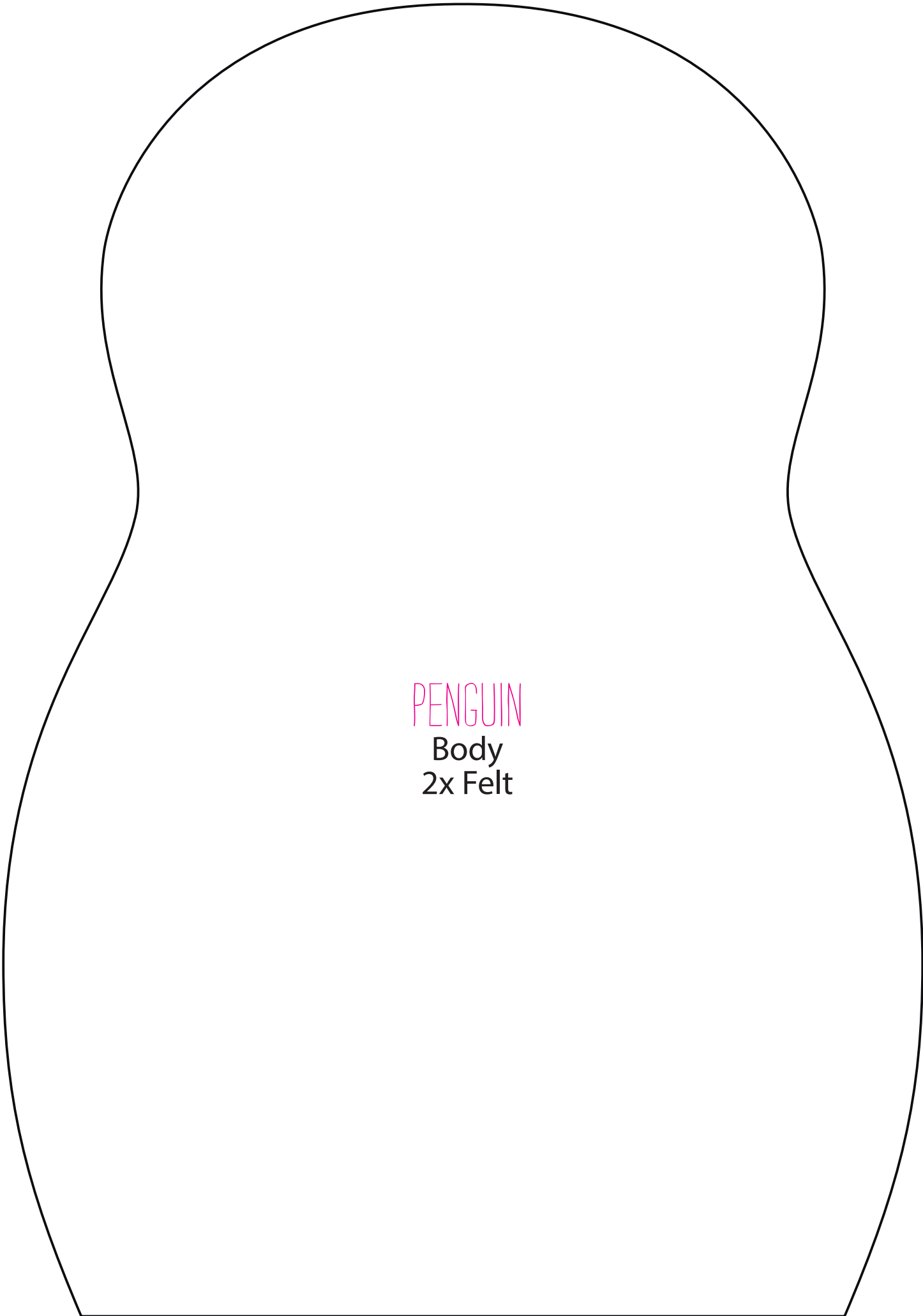
(Join to Piece A and
C along dashed line)



REINDEER CUSHION

Piece C
(Join to Piece B and D
along dashed line)



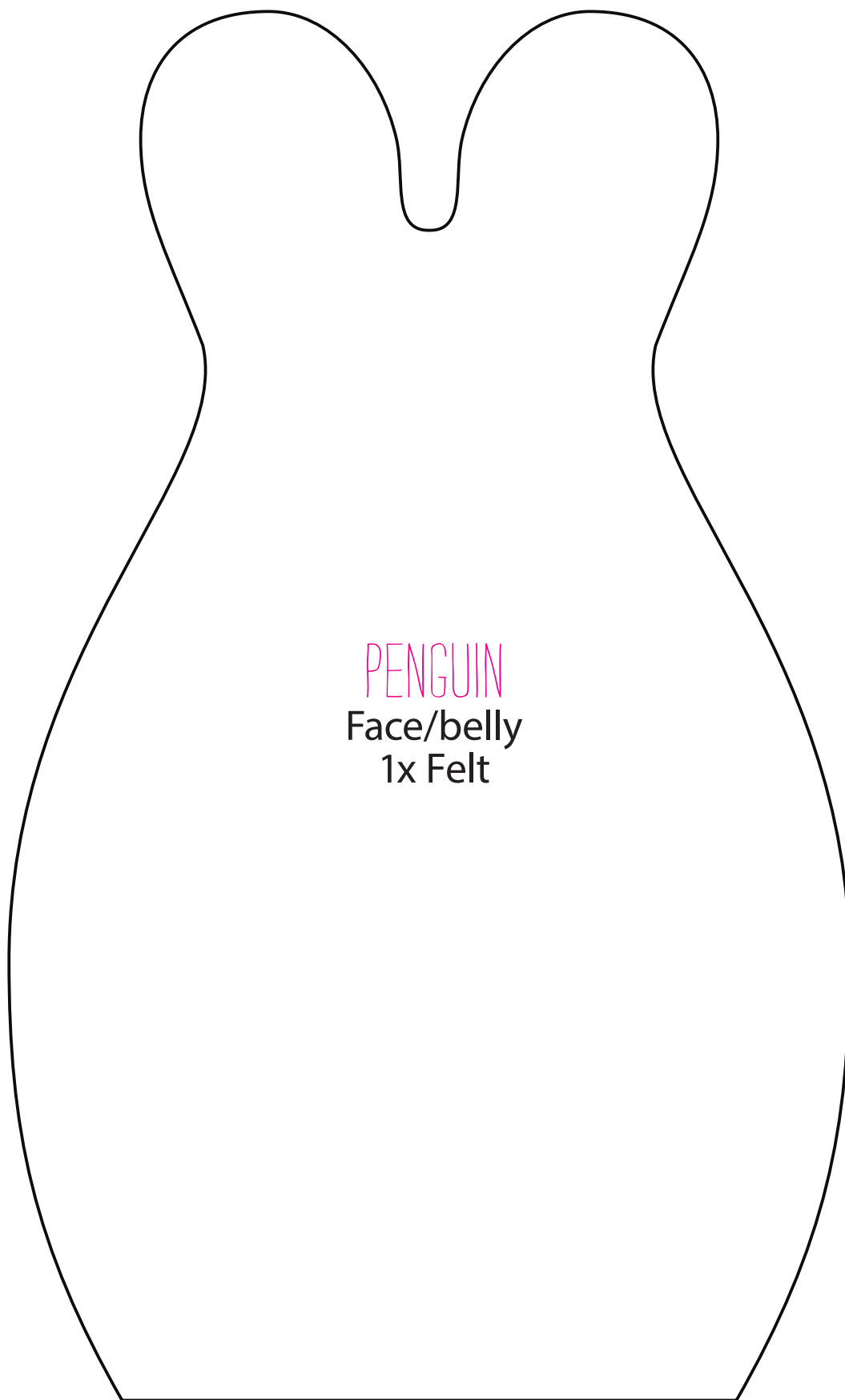
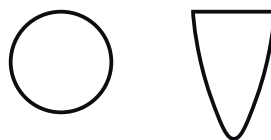


PENGUIN

Body
2x Felt

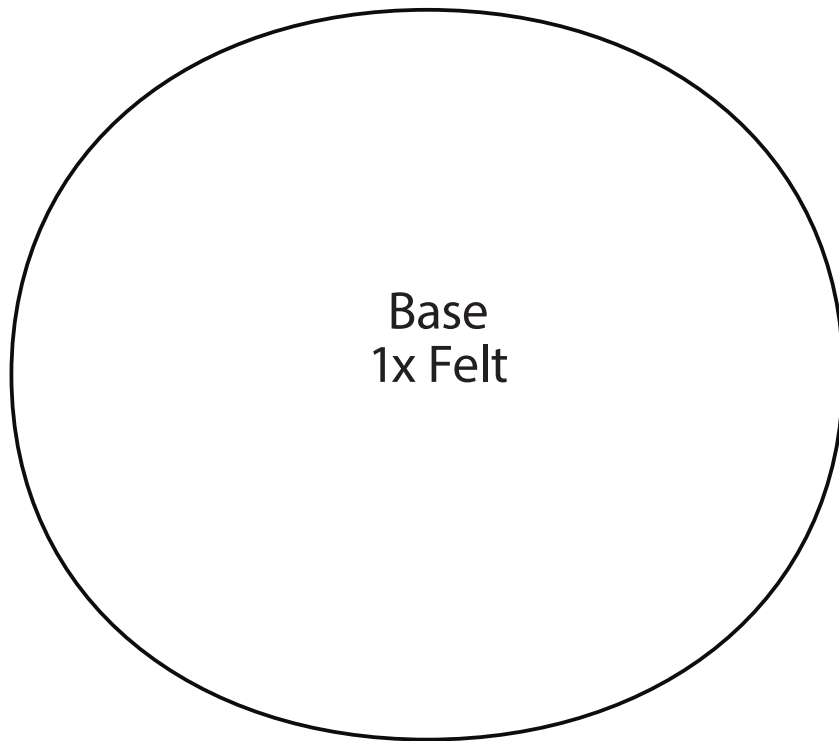
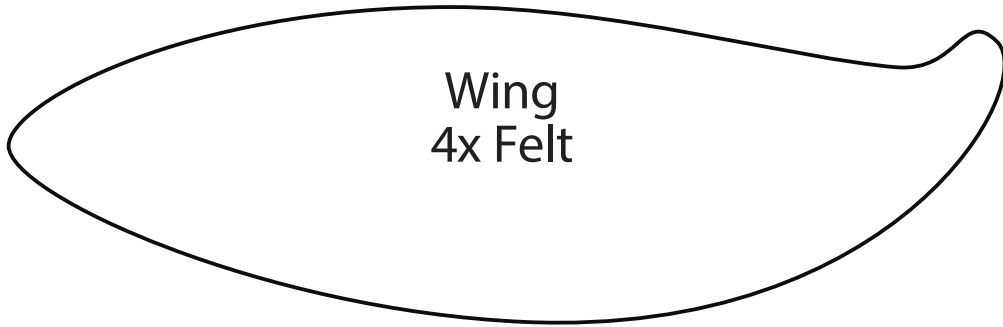
PENGUIN

Eye
2x Felt
Beak
2x Felt



PENGUIN
Face/belly
1x Felt

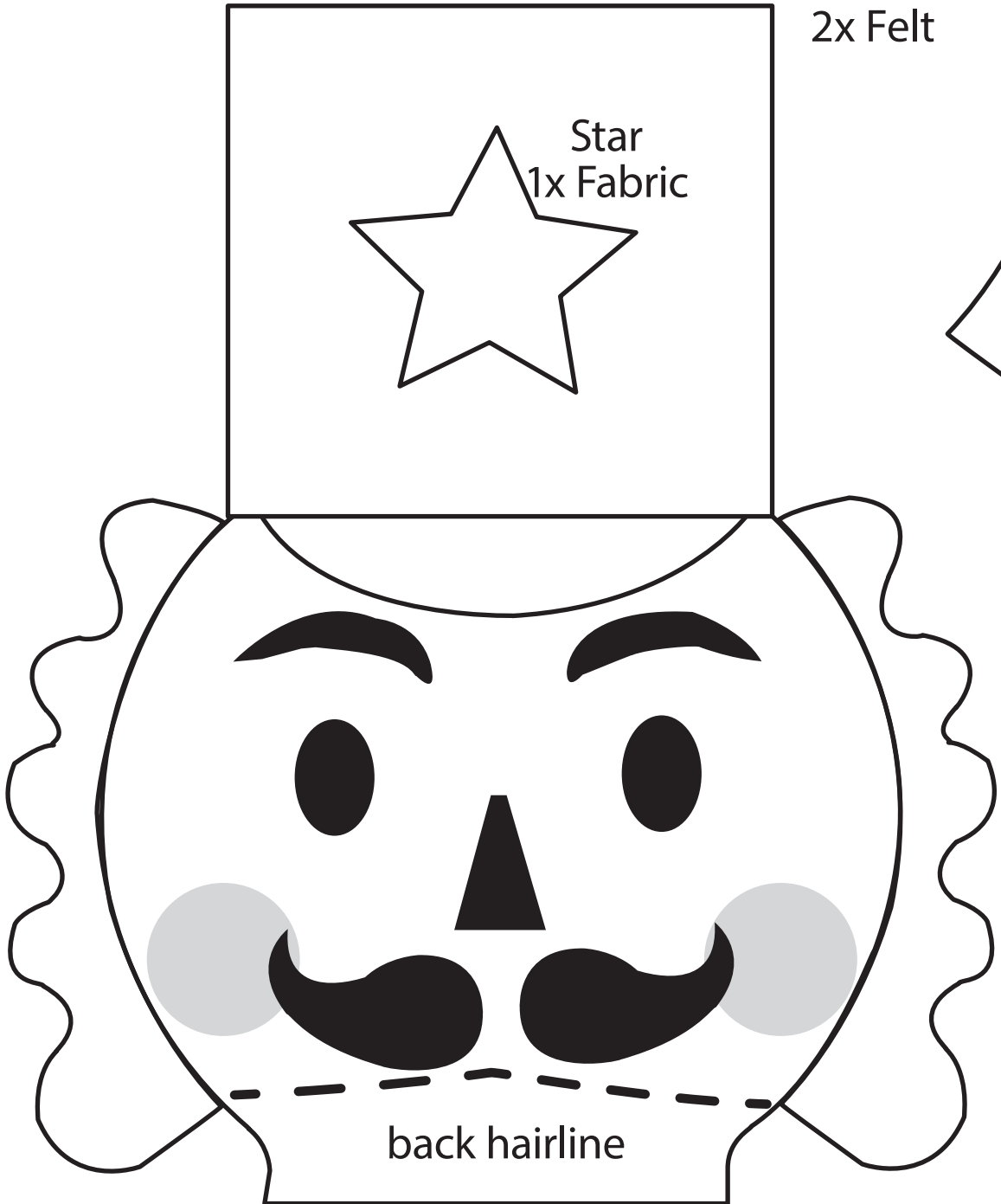
PENGUIN



PUPPET THEATRE
SOLDIER

Hair
2x Felt

Star
1x Fabric



Eyebrows, eyes, nose,
moustache, cheeks
1x Fabric

PUPPET THEATRE
SOLDIER

Hat
2x Fabric

Insert hair

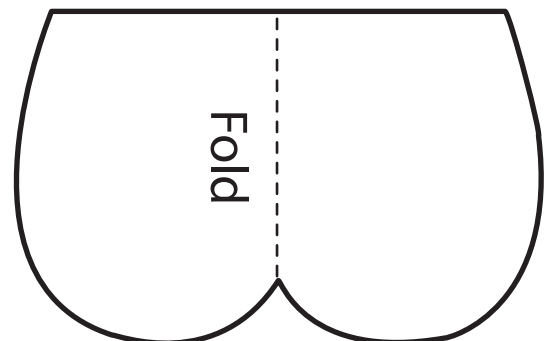
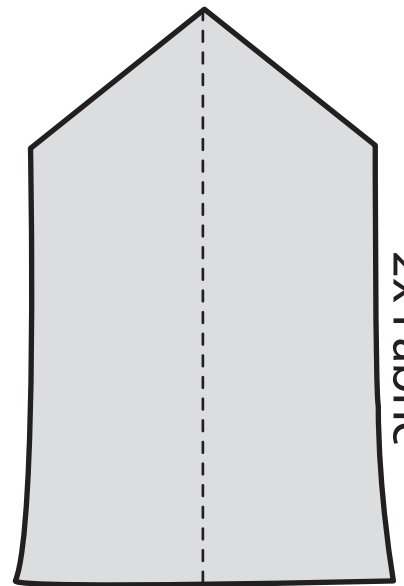
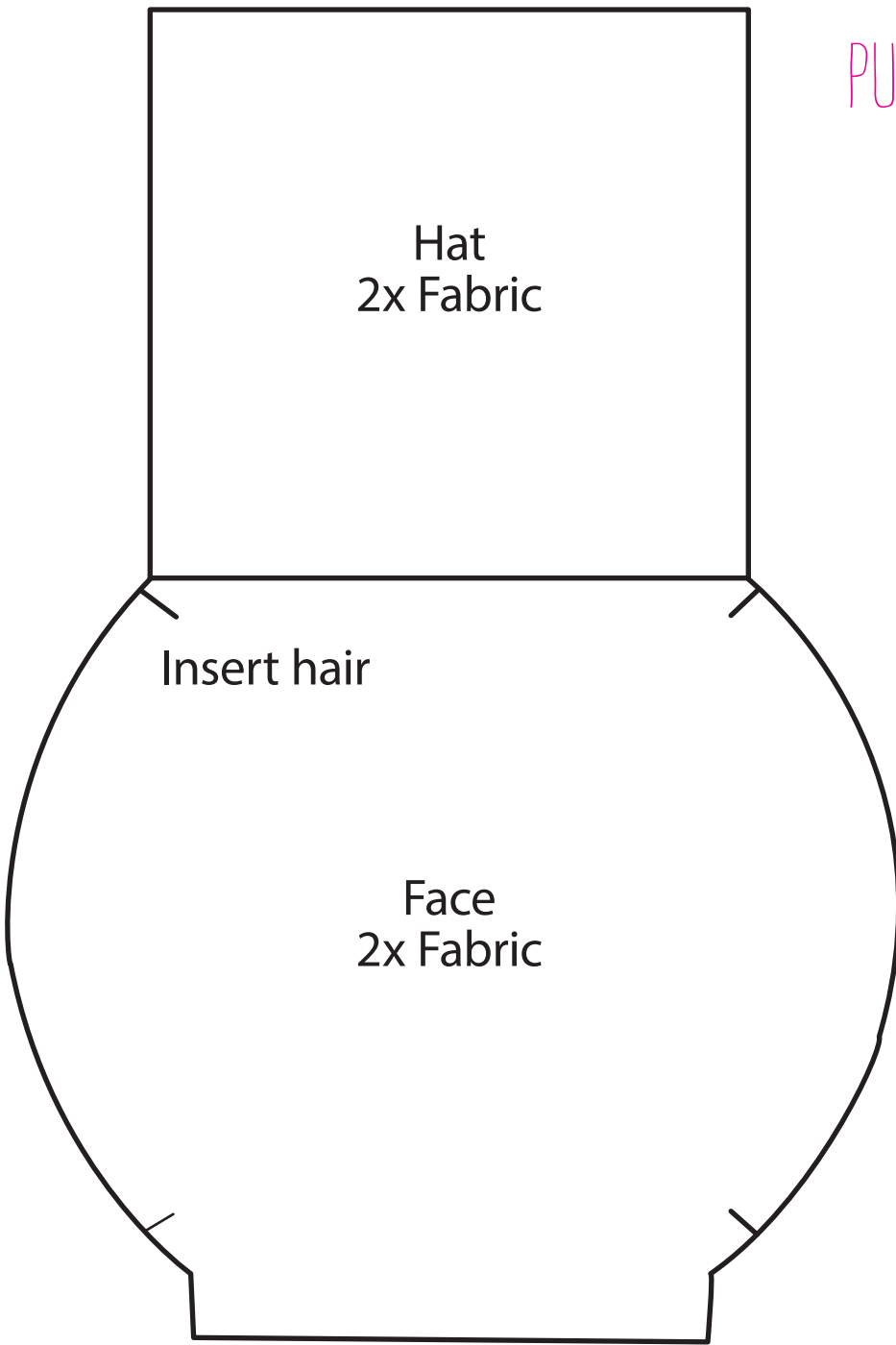
Face
2x Fabric

Sleeve
2x Fabric

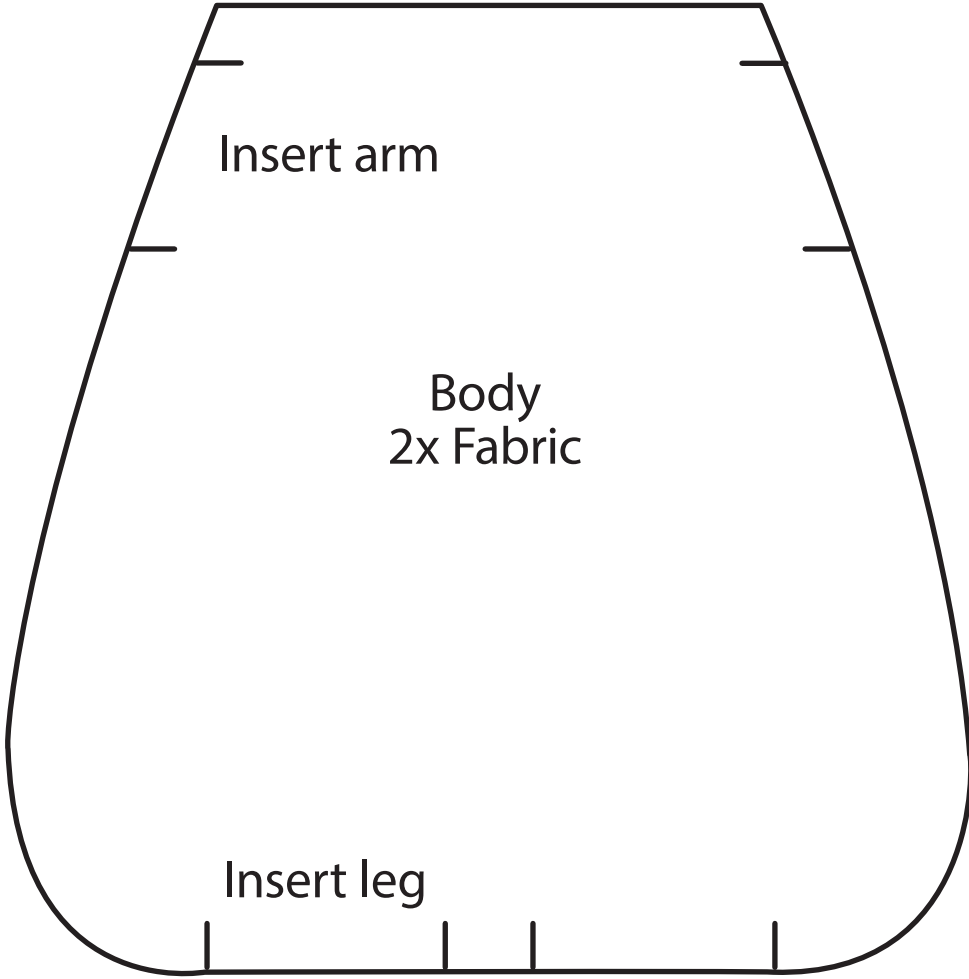
Cuff
2x Fabric

Hand 2x
Fabric

Fold



PUPPET THEATRE
SOLDIER

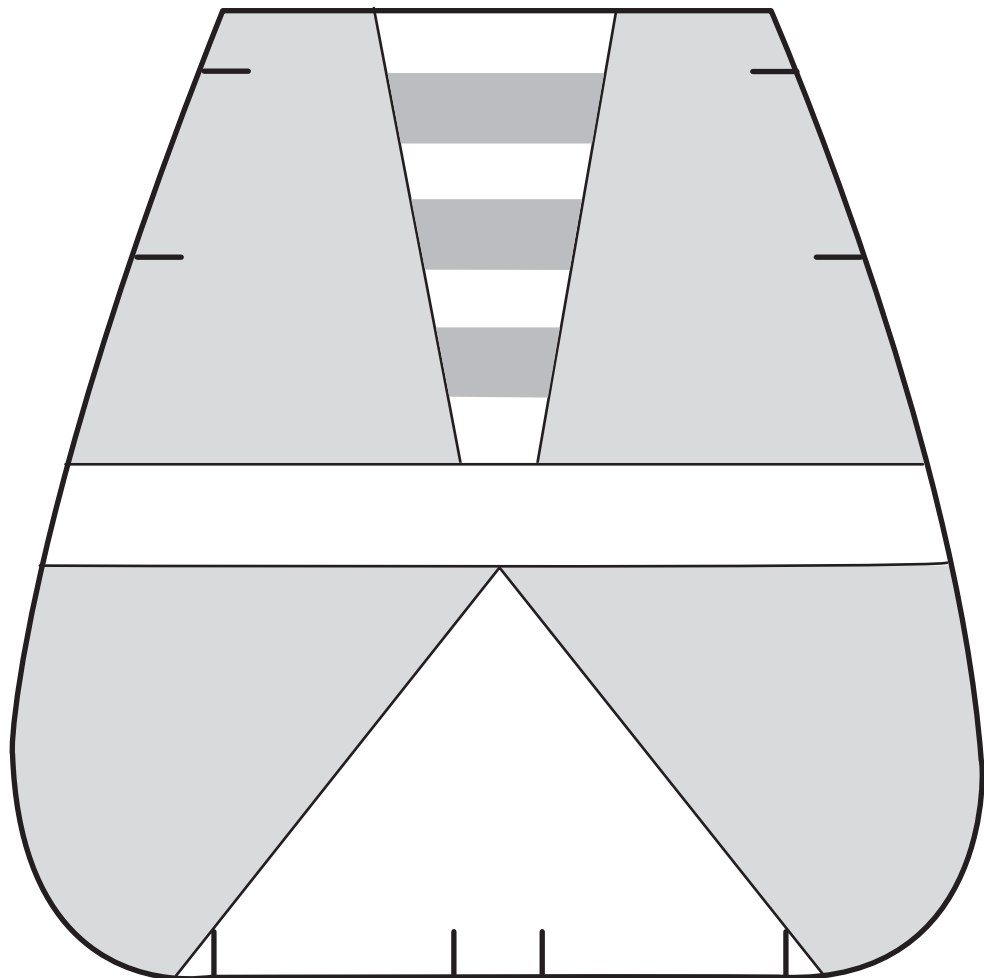
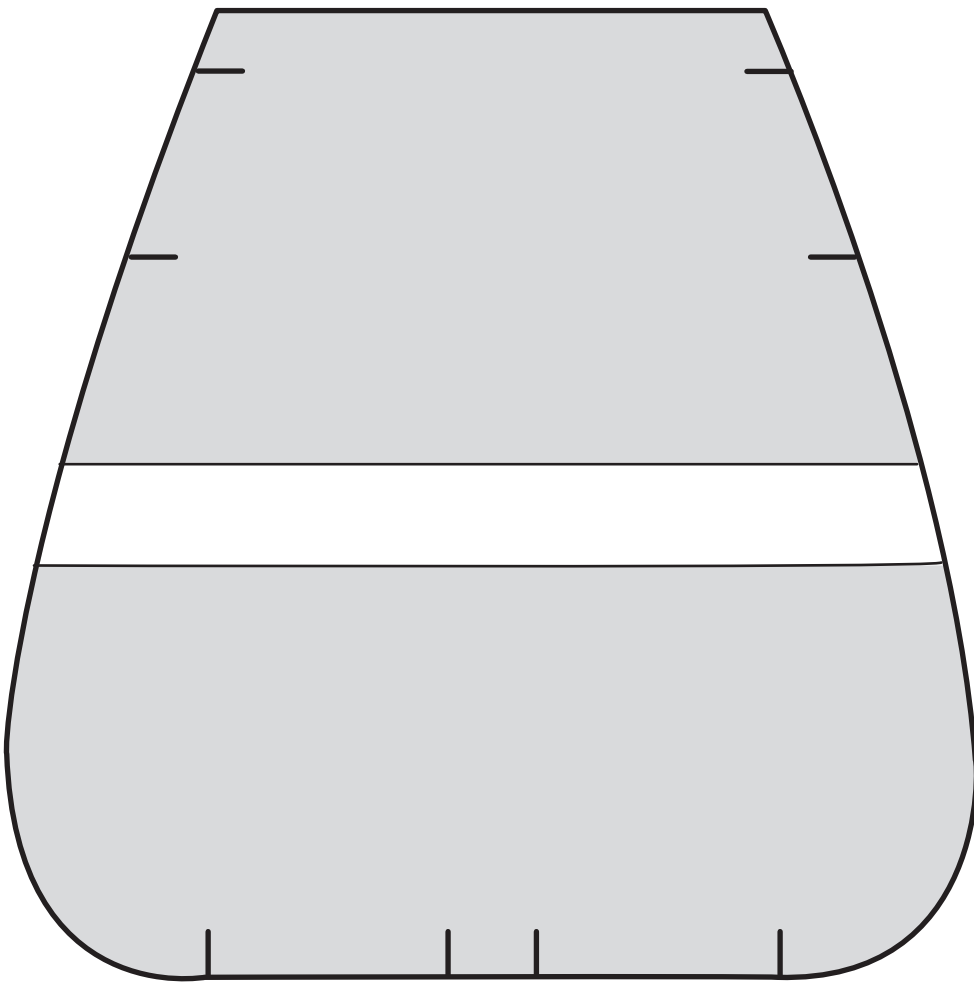


PUPPET THEATRE

SOLDIER

Body appliqué

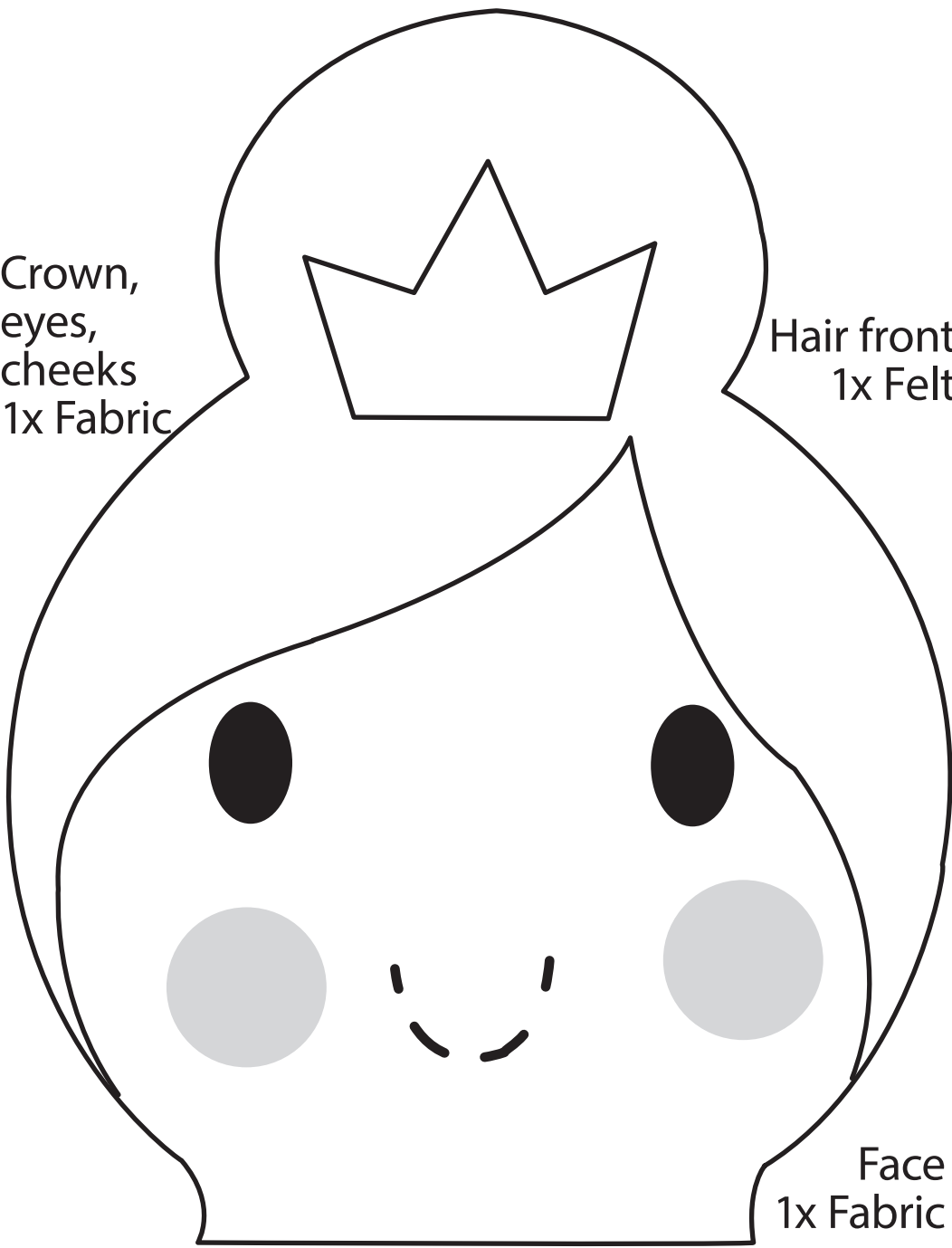
1x Fabric



PUPPET THEATRE
BALLERINA

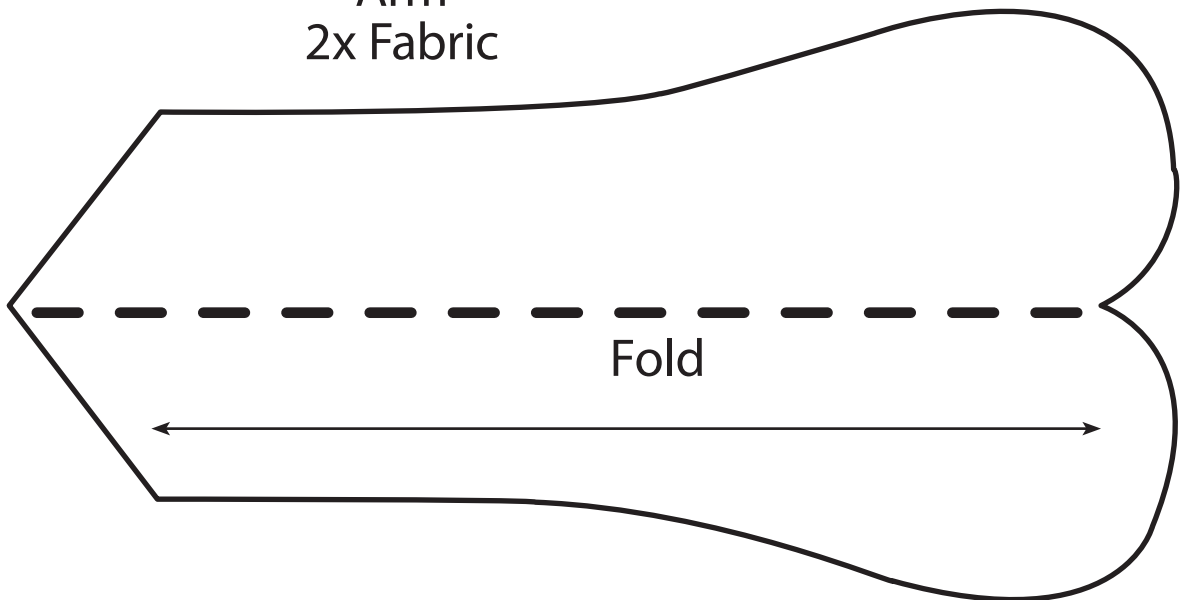
Crown,
eyes,
cheeks
1x Fabric

Hair front
1x Felt



Face
1x Fabric

Arm
2x Fabric

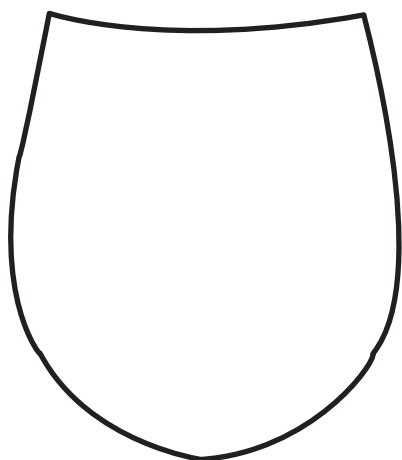


PUPPET THEATRE
BALLERINA

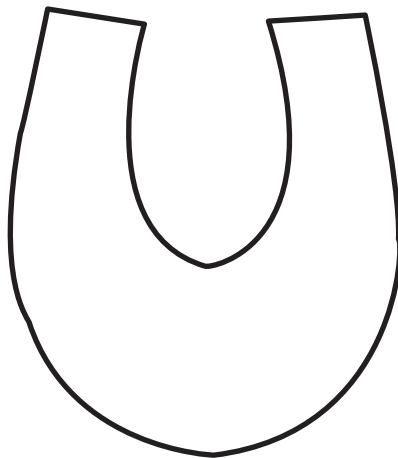
Head
1x Fabric

Hair back
1x Felt

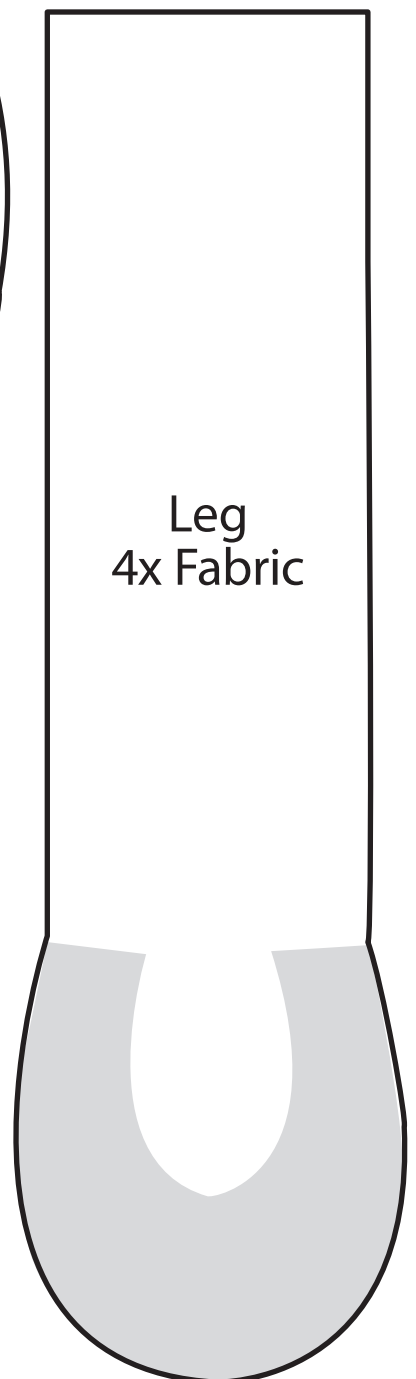
Leg
4x Fabric



Shoe back
2x Fabric

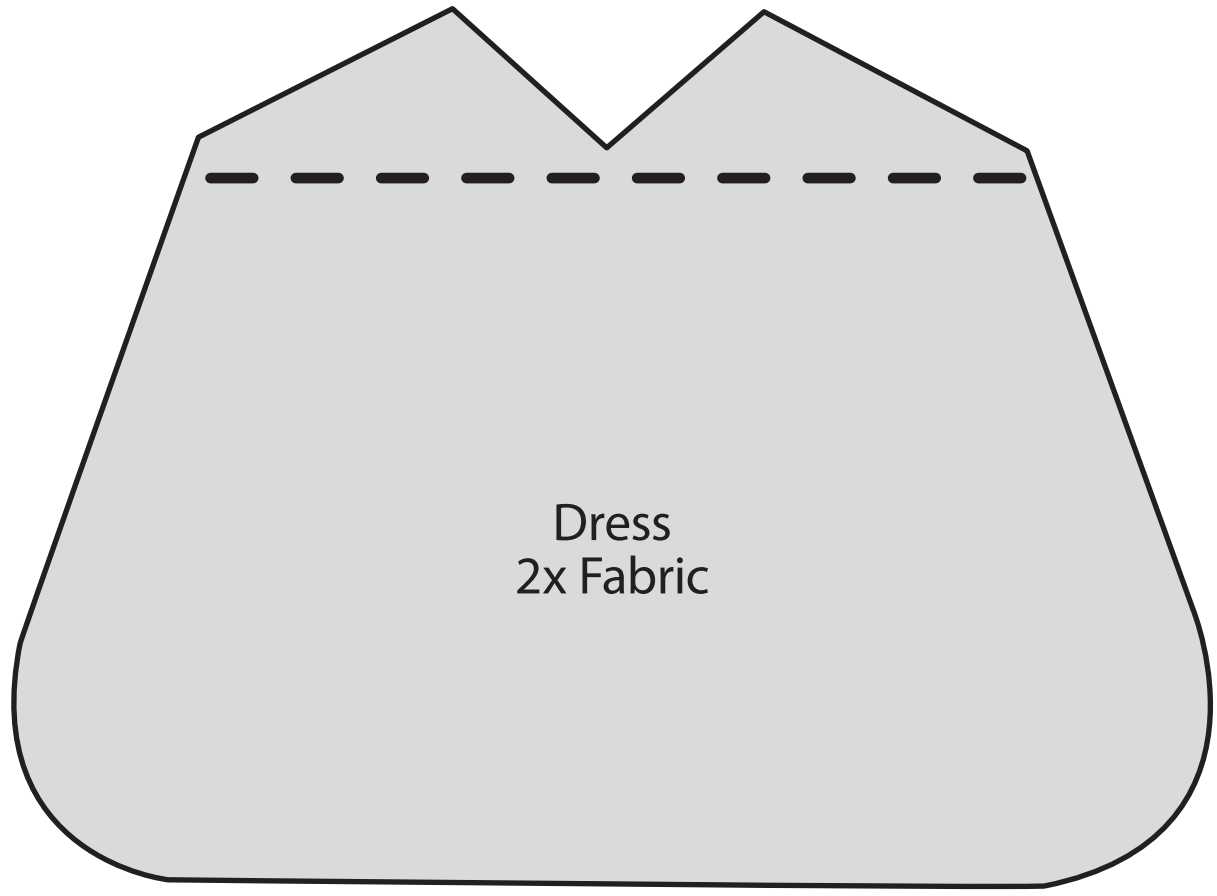
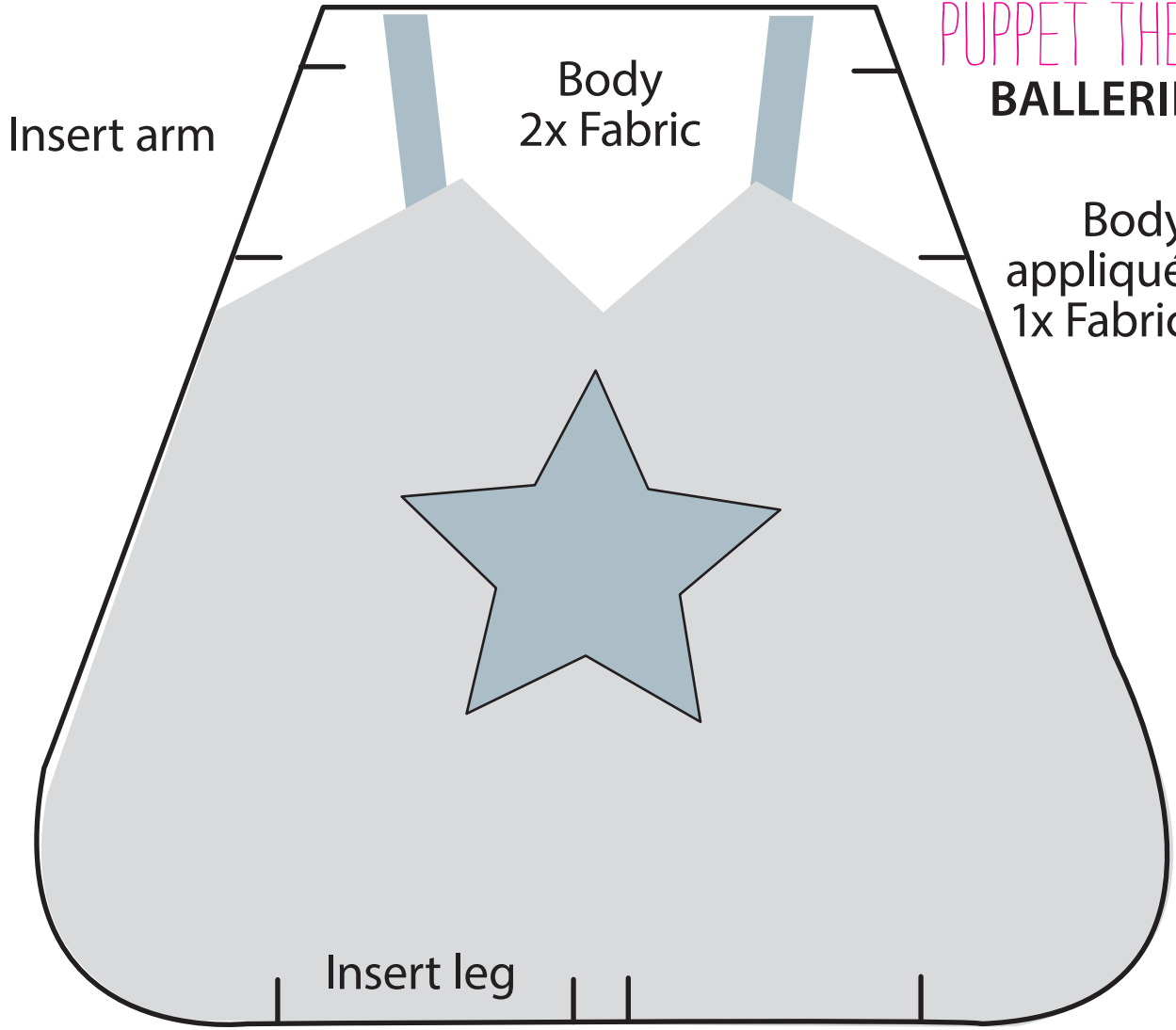


Shoe front
2x Fabric



PUPPET THEATRE

BALLERINA



PUPPET THEATRE
BALLERINA

Skirt Piece A
(Join to Piece B along
dashed line)

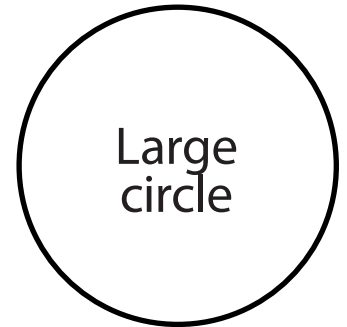
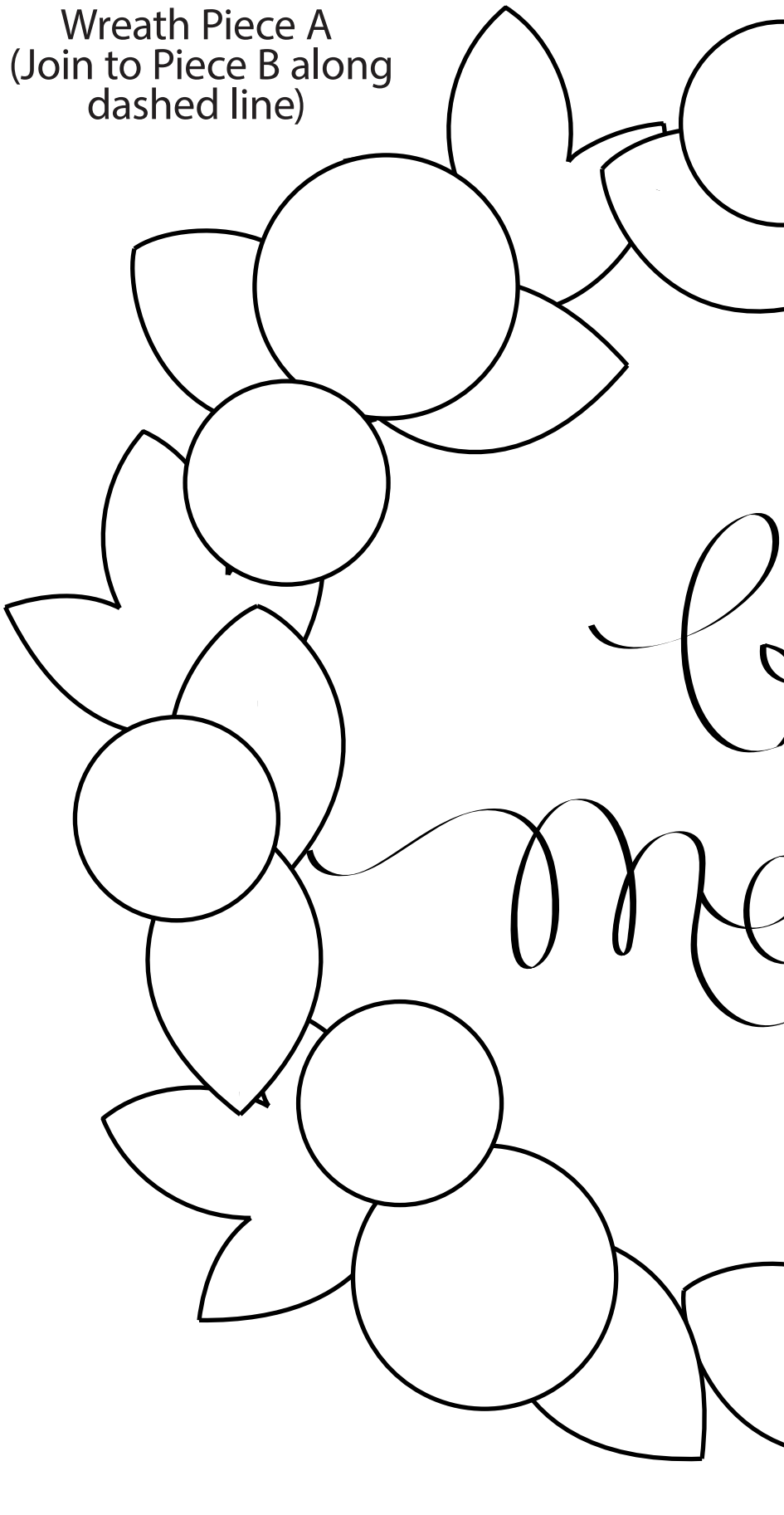
1x Each fabric

Skirt Piece B
(Join to Piece A along
dashed line)

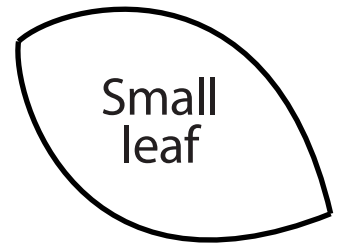
1x Each fabric

QUILTED HANGING

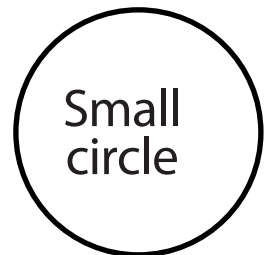
Wreath Piece A
(Join to Piece B along
dashed line)



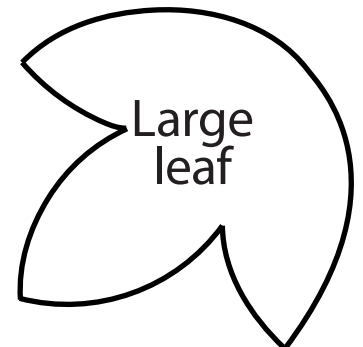
Large
circle



Small
leaf



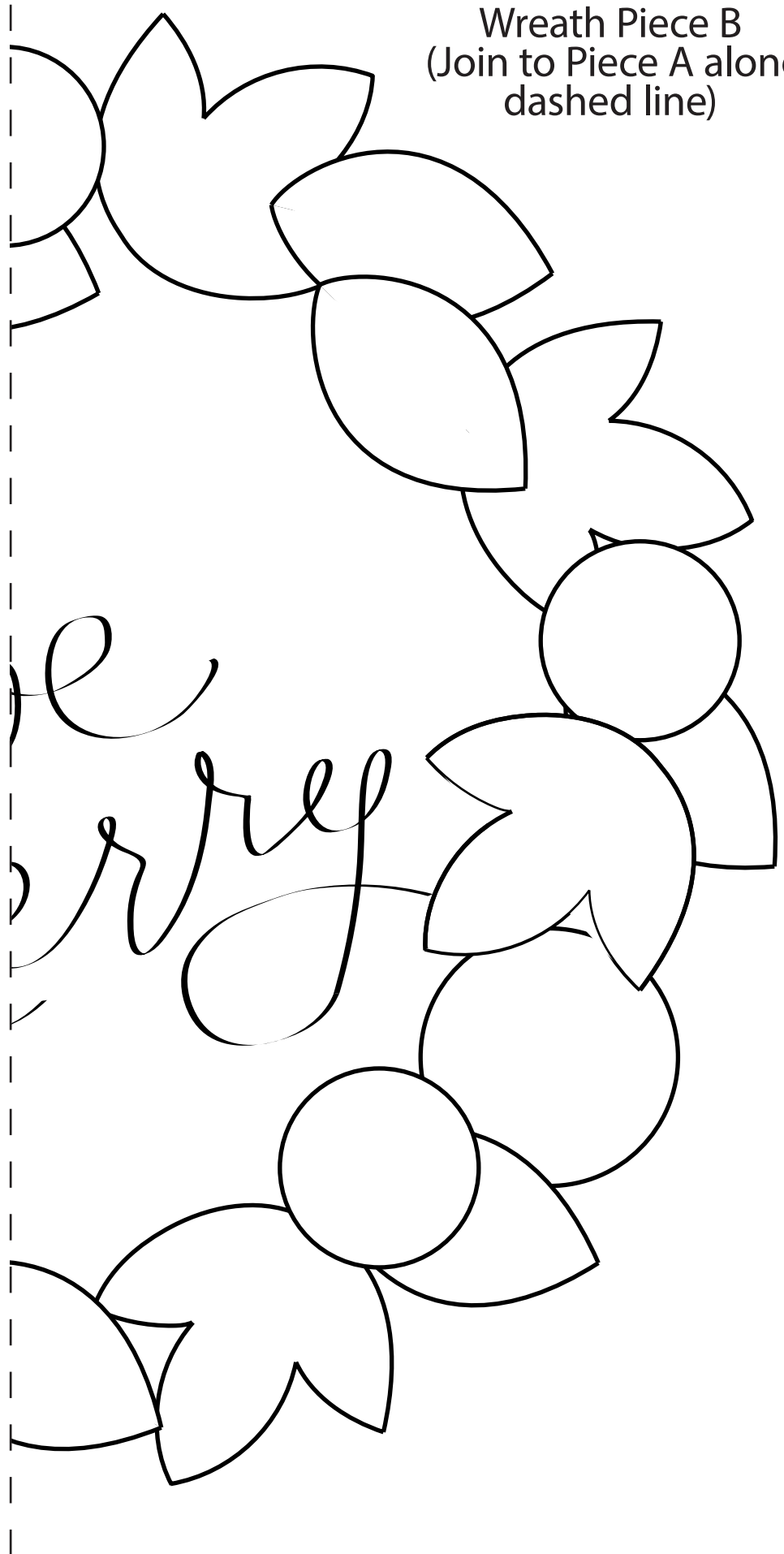
Small
circle



Large
leaf

QUILTED HANGING

Wreath Piece B
(Join to Piece A along
dashed line)



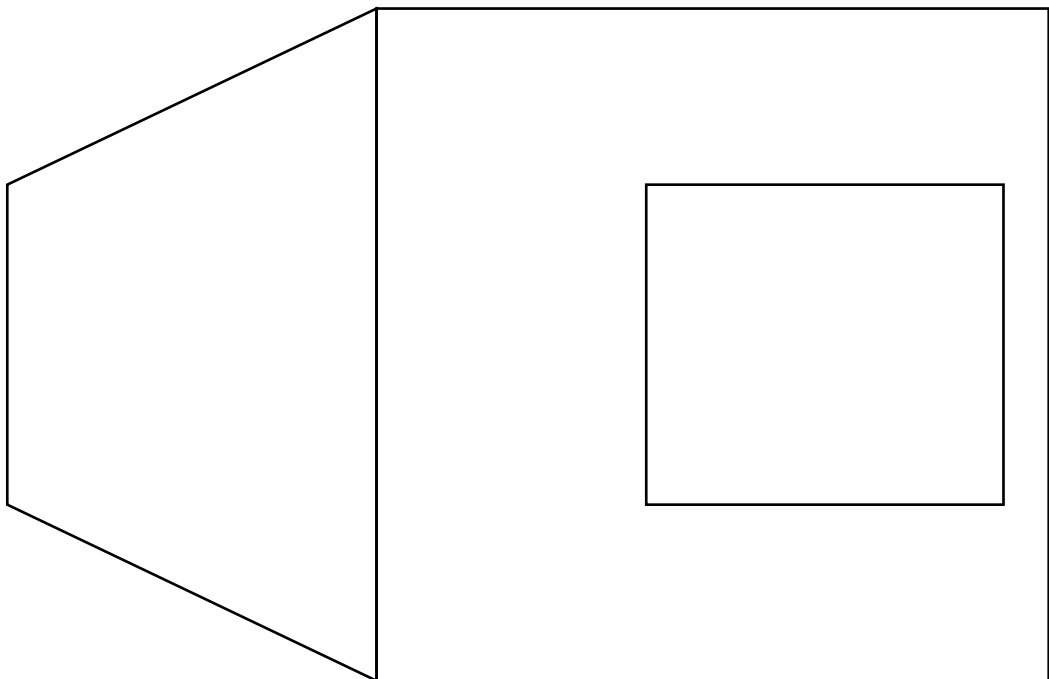
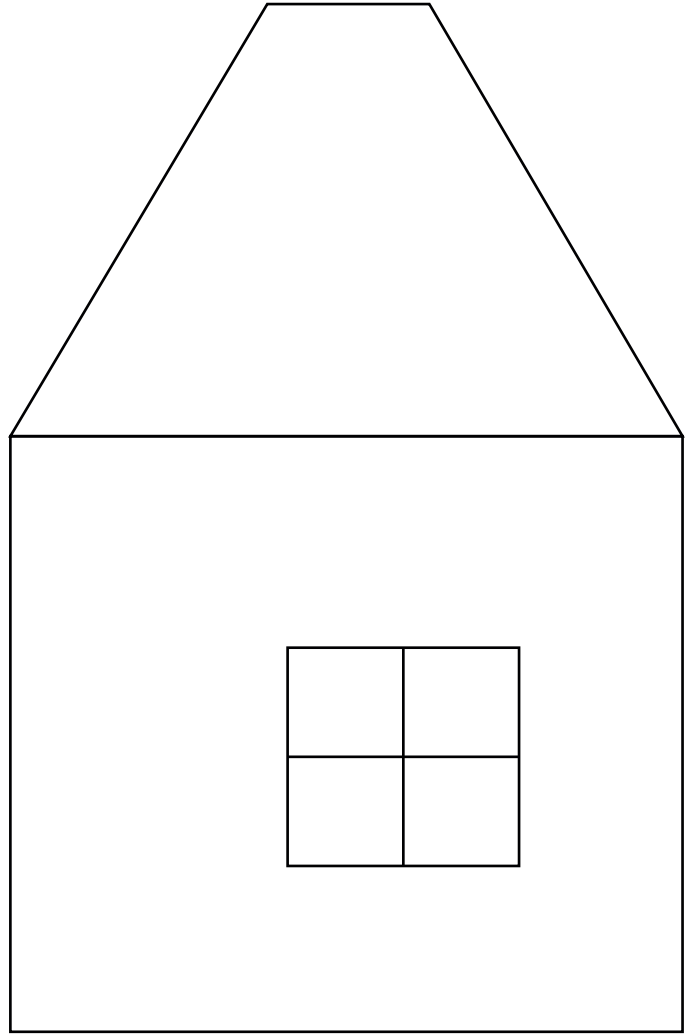
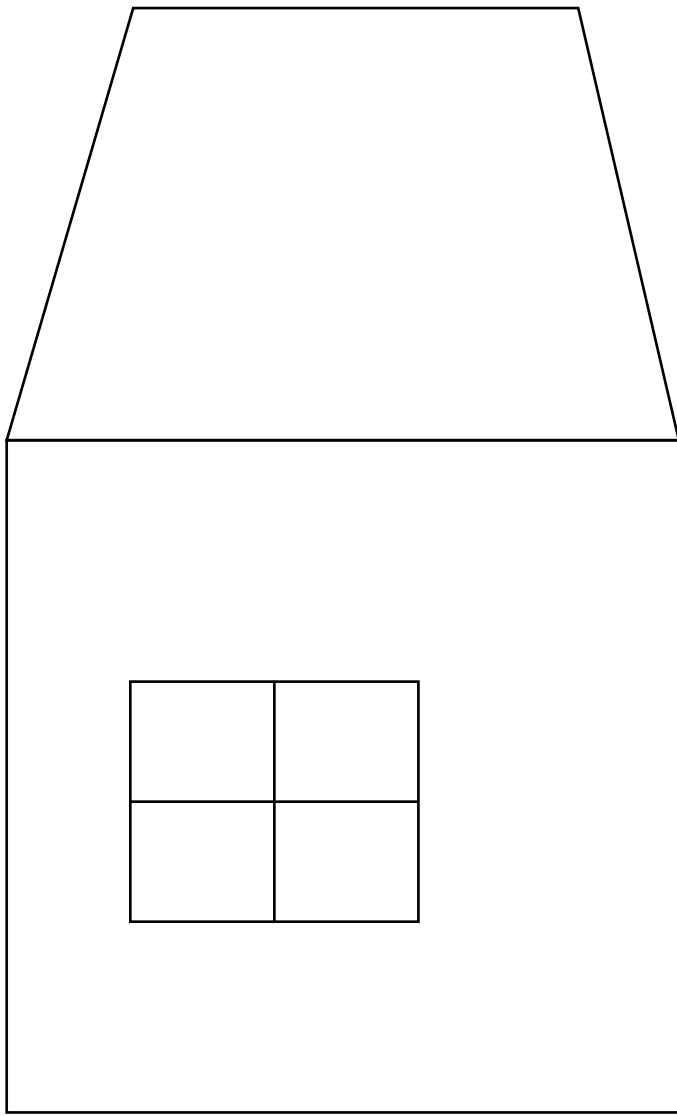


Bib Piece A
(Join to Piece B along
dashed line)

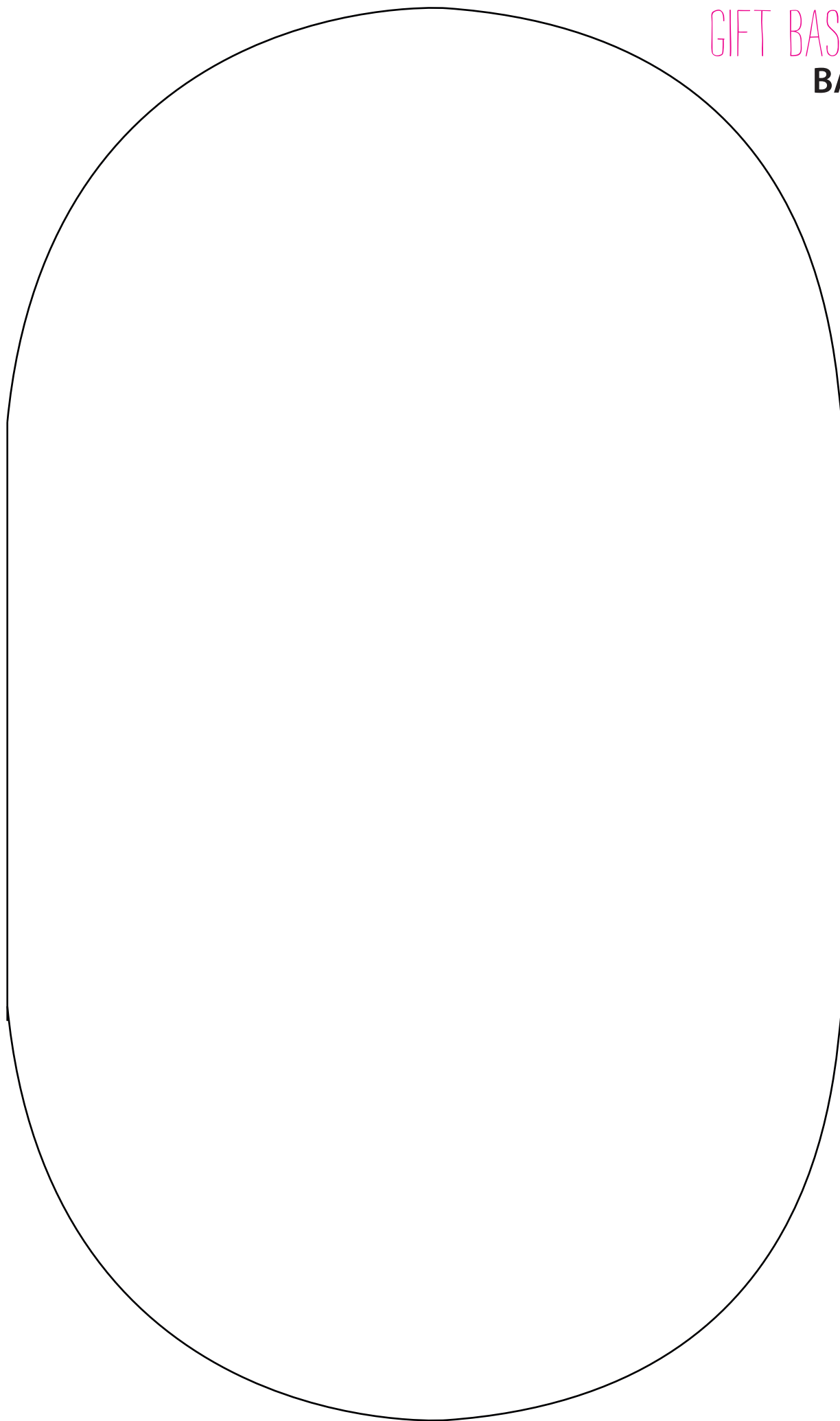


Bib Piece B
(Join to Piece A along
dashed line)

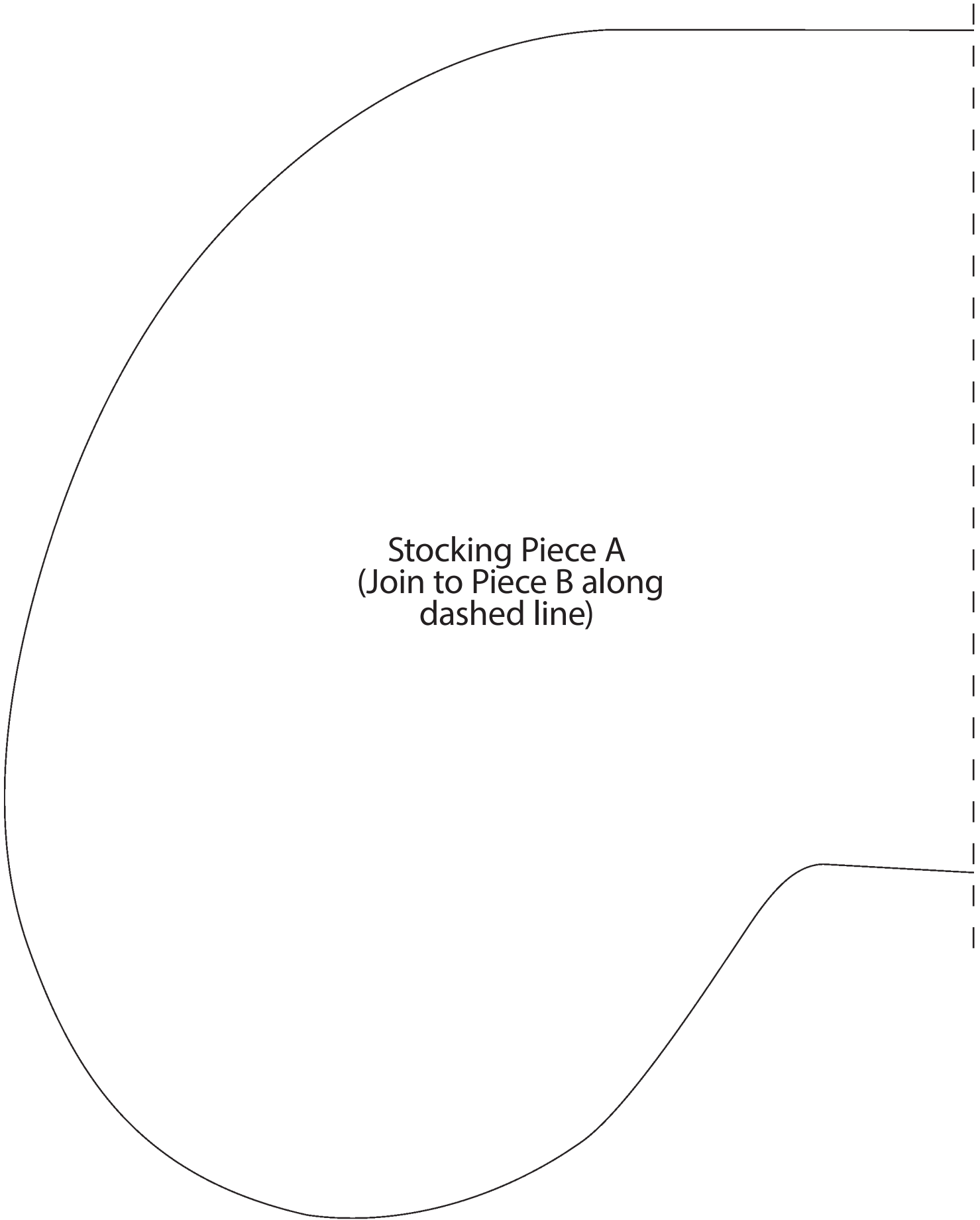
HOUSE DECORATIONS



GIFT BASKET
BASE



PATCHWORK STOCKING



Stocking Piece A
(Join to Piece B along
dashed line)

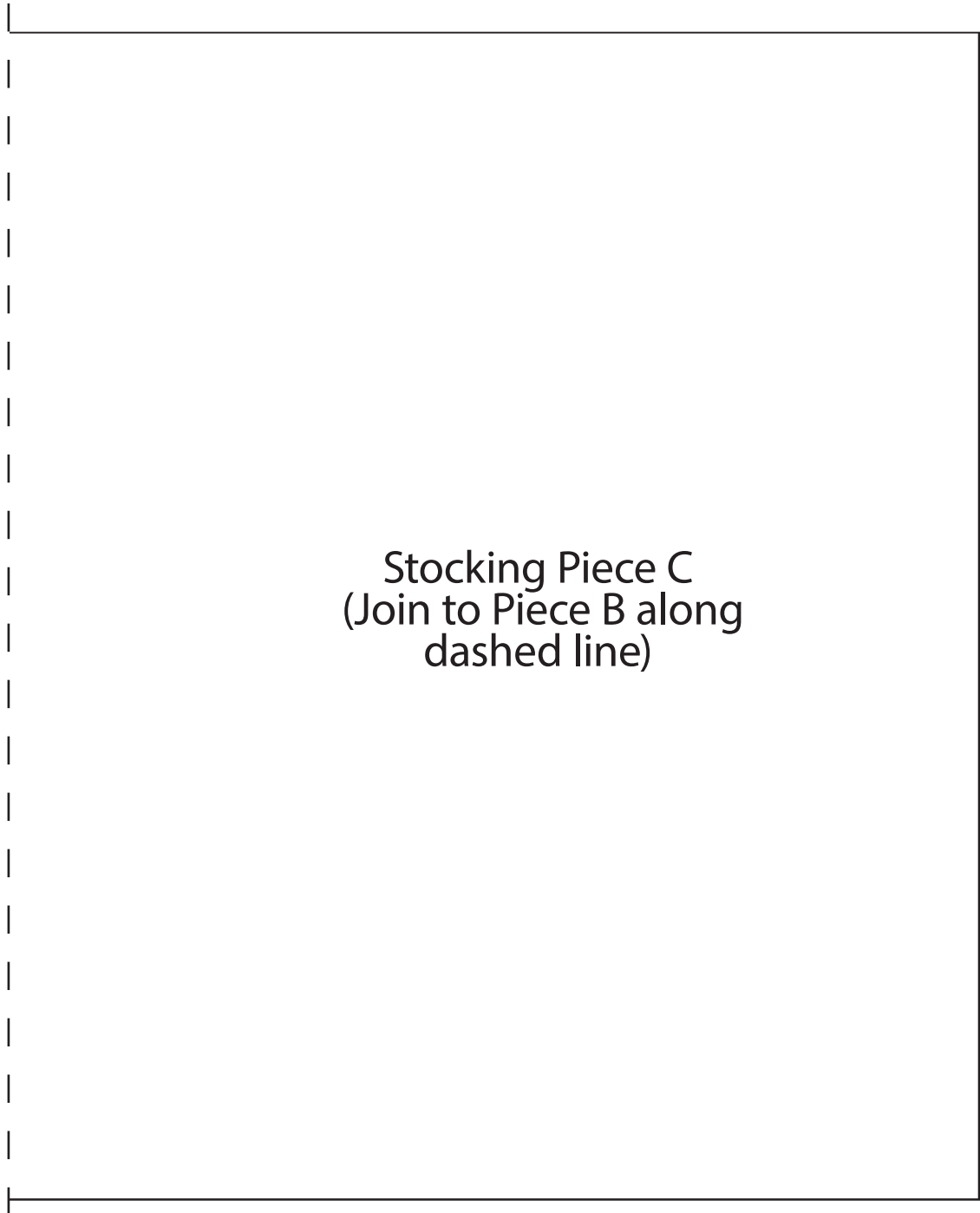
PATCHWORK STOCKING



The diagram shows a large rectangular shape representing a stocking piece. The top and bottom edges are solid black lines. The left and right edges are dashed black lines. A vertical dashed line is positioned near the right edge, extending from the top to the bottom. The text is centered within the rectangle.

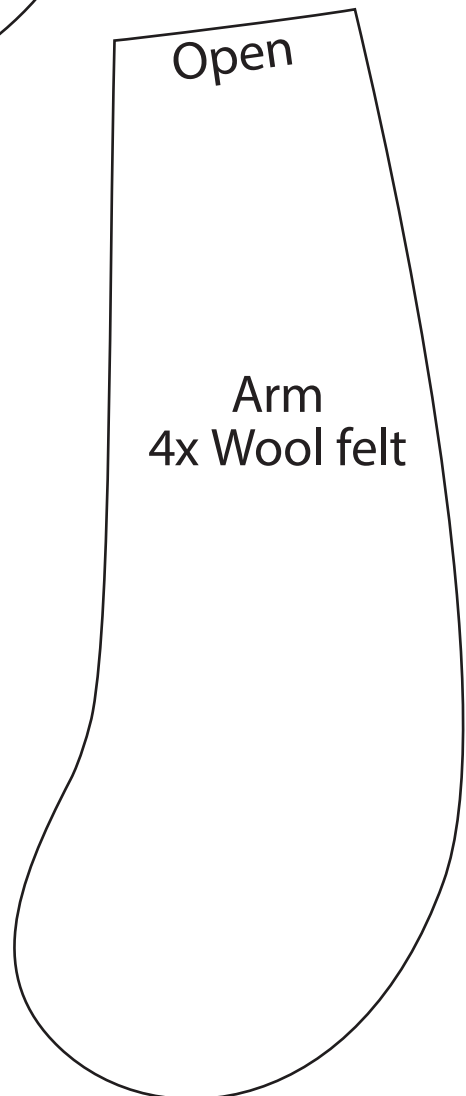
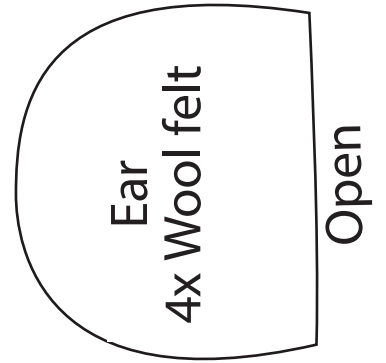
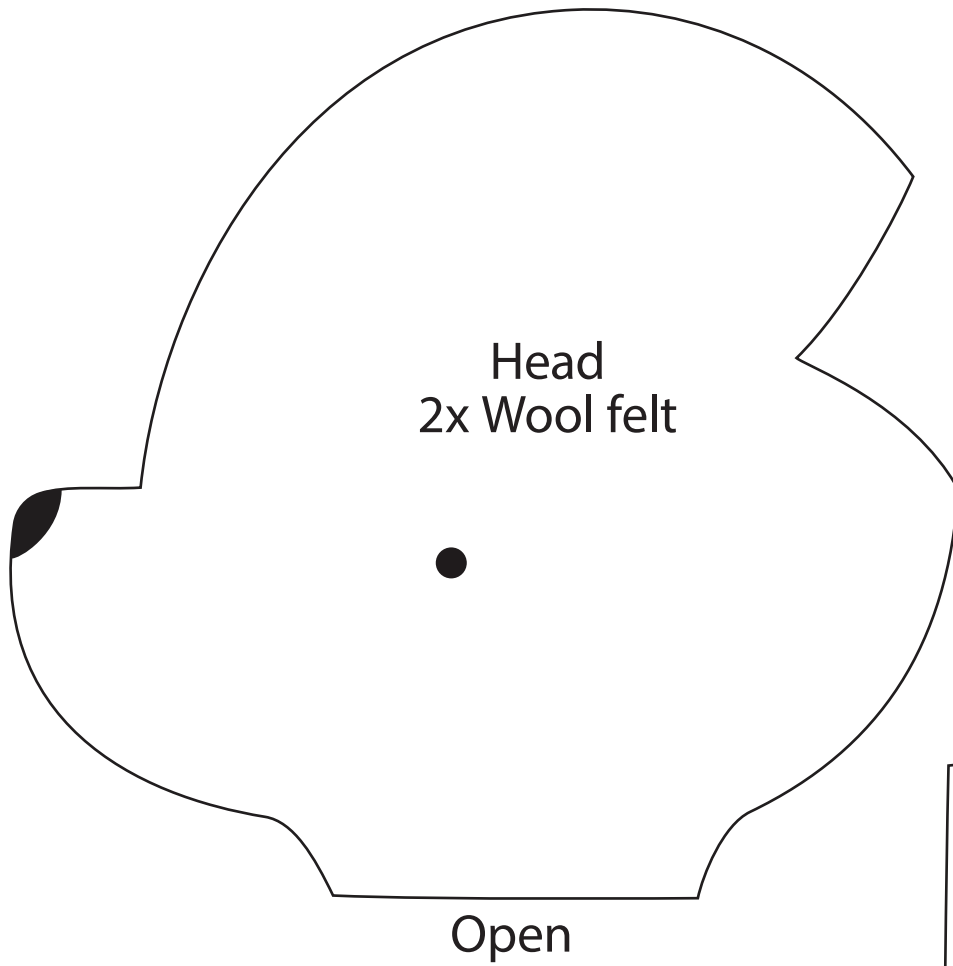
Stocking Piece B
(Join to Piece A and C
along dashed lines)

PATCHWORK STOCKING



Stocking Piece C
(Join to Piece B along
dashed line)

BABY COMFORTER



BABY COMFORTER

Place on fold

Blanket Piece A
(Join to Piece B along
dashed line)

Blanket
1x Wool felt
1x Fabric
On fold

Gather

Blanket Piece B
(Join to Piece A along
dashed line)

APPLIQUÉ JUMPER

