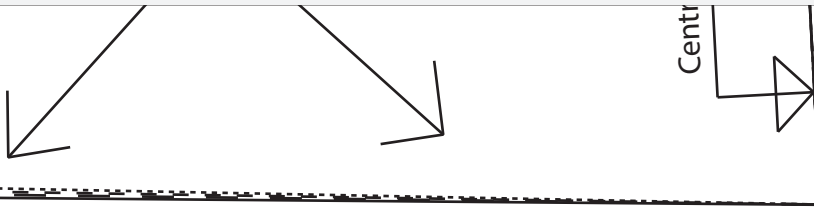


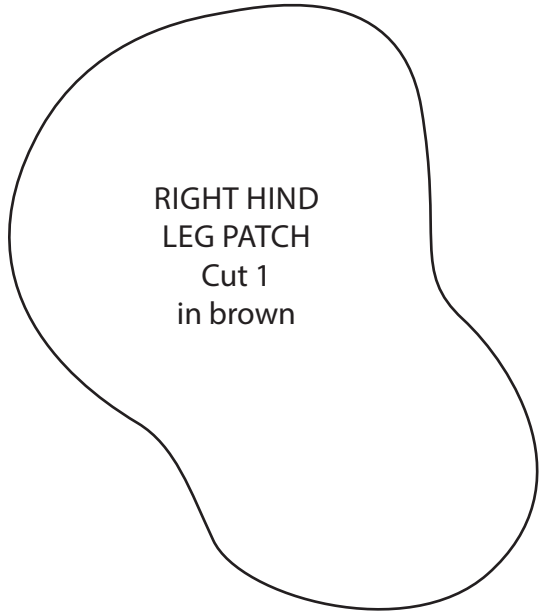
ACTUAL SIZE

FRONT
YOKE

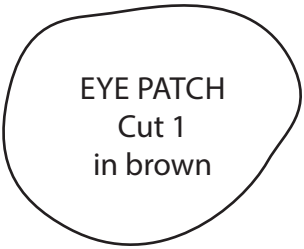


Simply Sewing

FRESH IDEAS WITH FABRIC



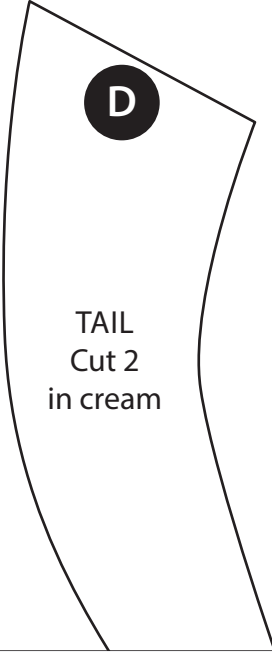
RIGHT HIND
LEG PATCH
Cut 1
in brown



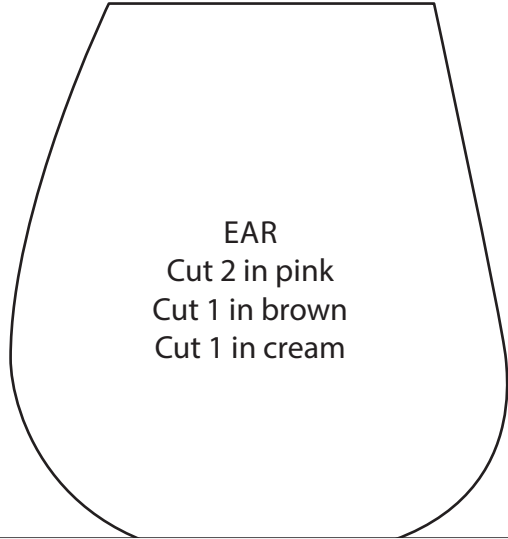
EYE PATCH
Cut 1
in brown

PERFECT PUPPY

PAGE 53
ACTUAL SIZE



D
TAIL
Cut 2
in cream

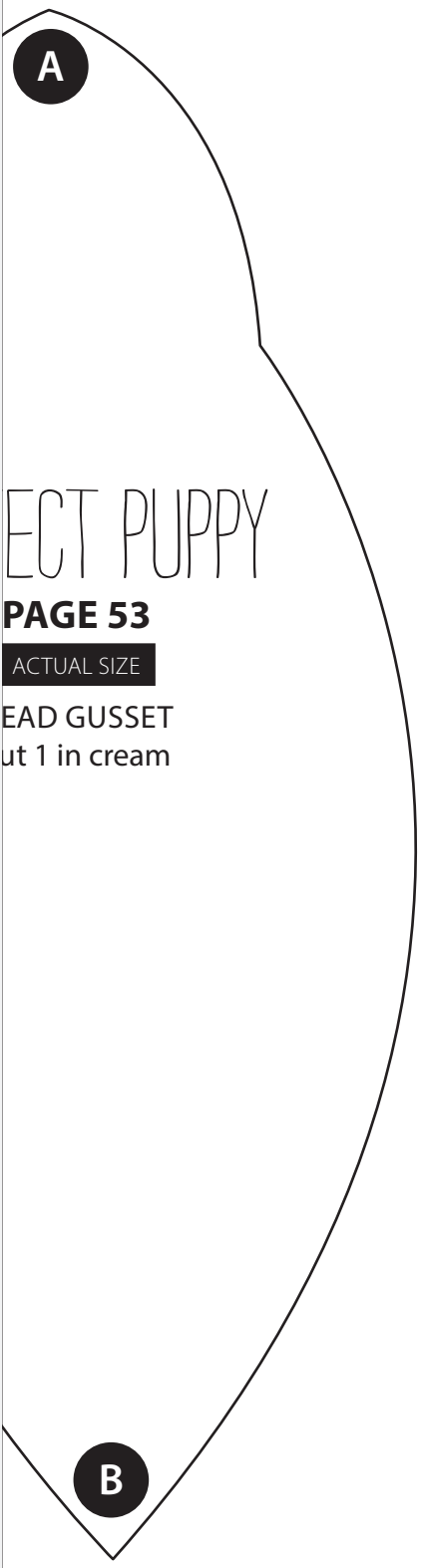


EAR
Cut 2 in pink
Cut 1 in brown
Cut 1 in cream

PERF

H
C

L
SHO
PA
C



← —
Increase
sleeve length
as required

ECT PUPPY

PAGE 53

ACTUAL SIZE

HEAD GUSSET
cut 1 in cream

Sleeve opening

EFT
JLDER
TCH
cut 1

TWO PIECE TOP

PAGE 34

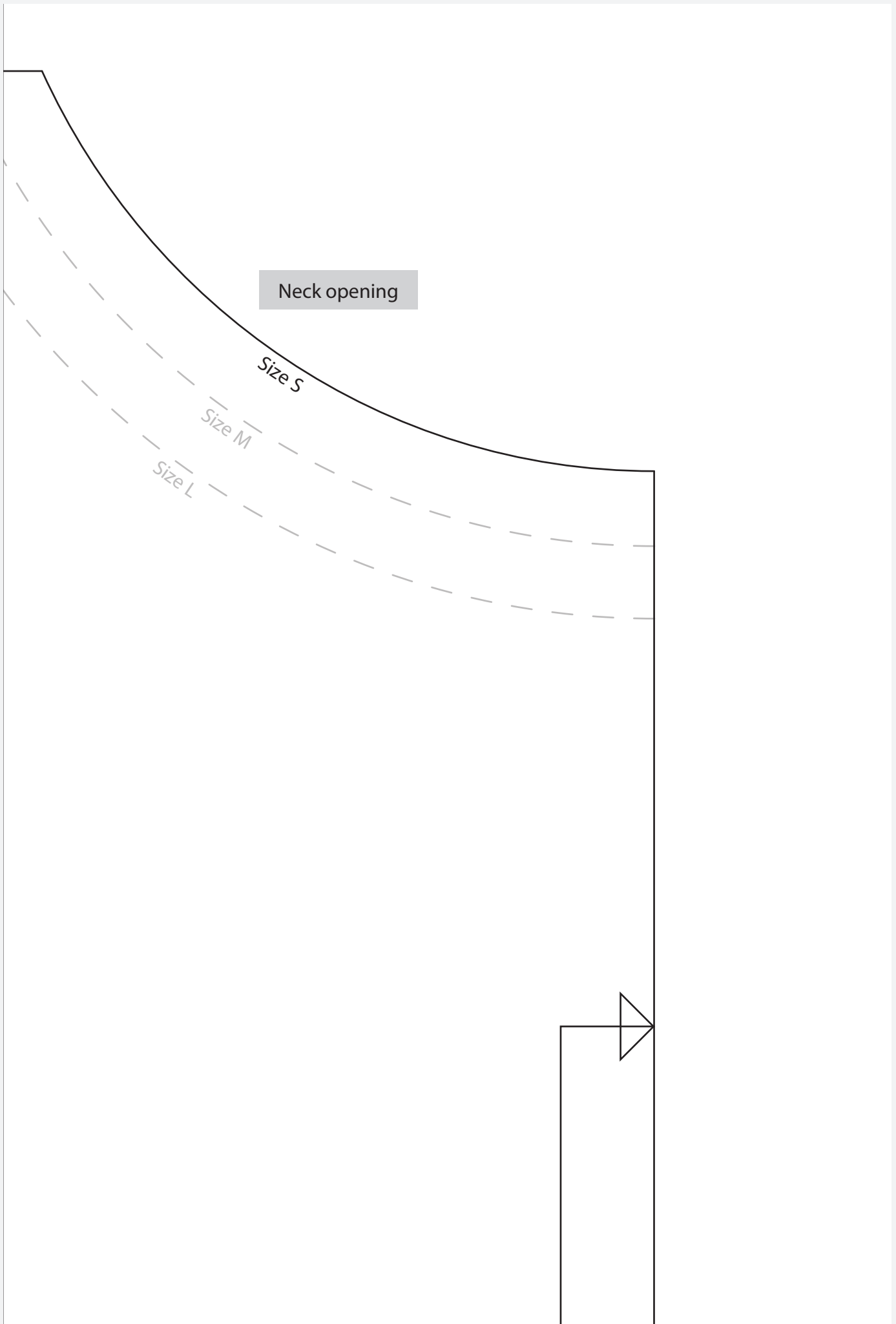
ACTUAL SIZE

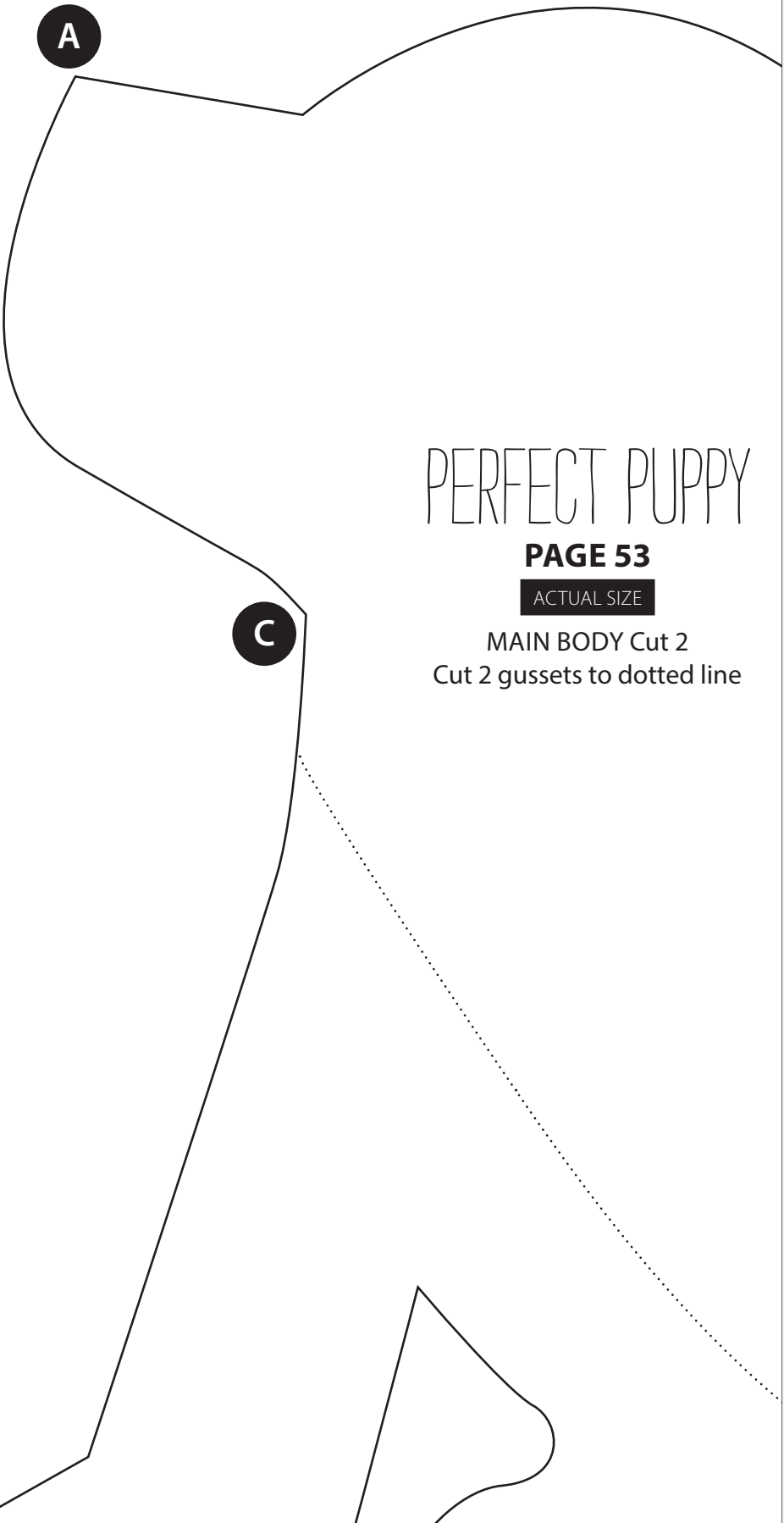
FRONT/BACK
(CUT 2 ON FOLD)



Grainline

Add extra
width
here as
required





PERFECT PUPPY

PAGE 53

ACTUAL SIZE

MAIN BODY Cut 2
Cut 2 gussets to dotted line

rown

Increase
sleeve length
as required



B

Cut 2 gussets to
dotted line

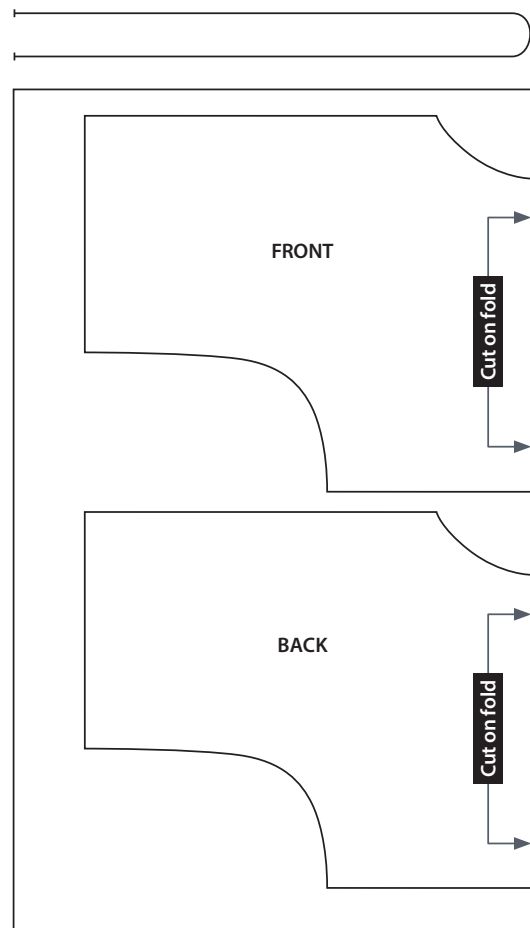
E

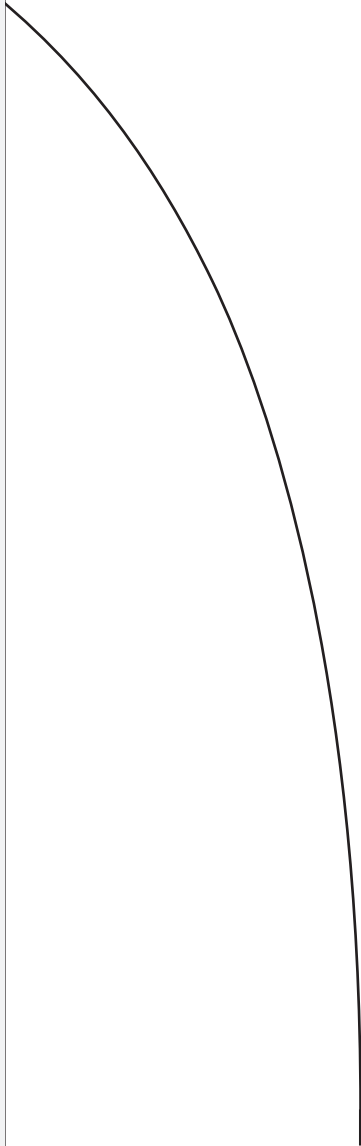


NOTES ON SIZING

The above Front/Back pattern piece is sized to fit a UK dress size 8-10. For other dress sizes, please adjust the pattern piece as marked on the template, to fit you. You can add as much extra length to the hem and sleeves as you like. You will also need to add extra width to the template piece at the dashed line, approx 5-10cm per sizing bracket. So for size 12-14, add an extra 5-10cm; for size 16-18, add an extra 15-20cm; for size 20-22, add an extra 25-30cm. Check the size of your new template piece against your body measurements, making sure that the top will accommodate your bust and hips measurements. If in doubt, sew a toile or test top using spare fabric. The amount of fabric you will need will vary depending on how you adjust your template piece.

CUTTING LAYOUT - TWO PIECE TOP





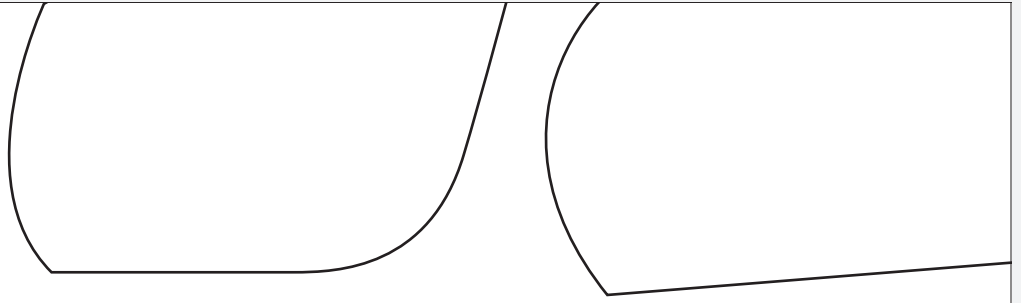
Increase
body length
as required
↓

Cut on fold



Increase
body length
as required







D