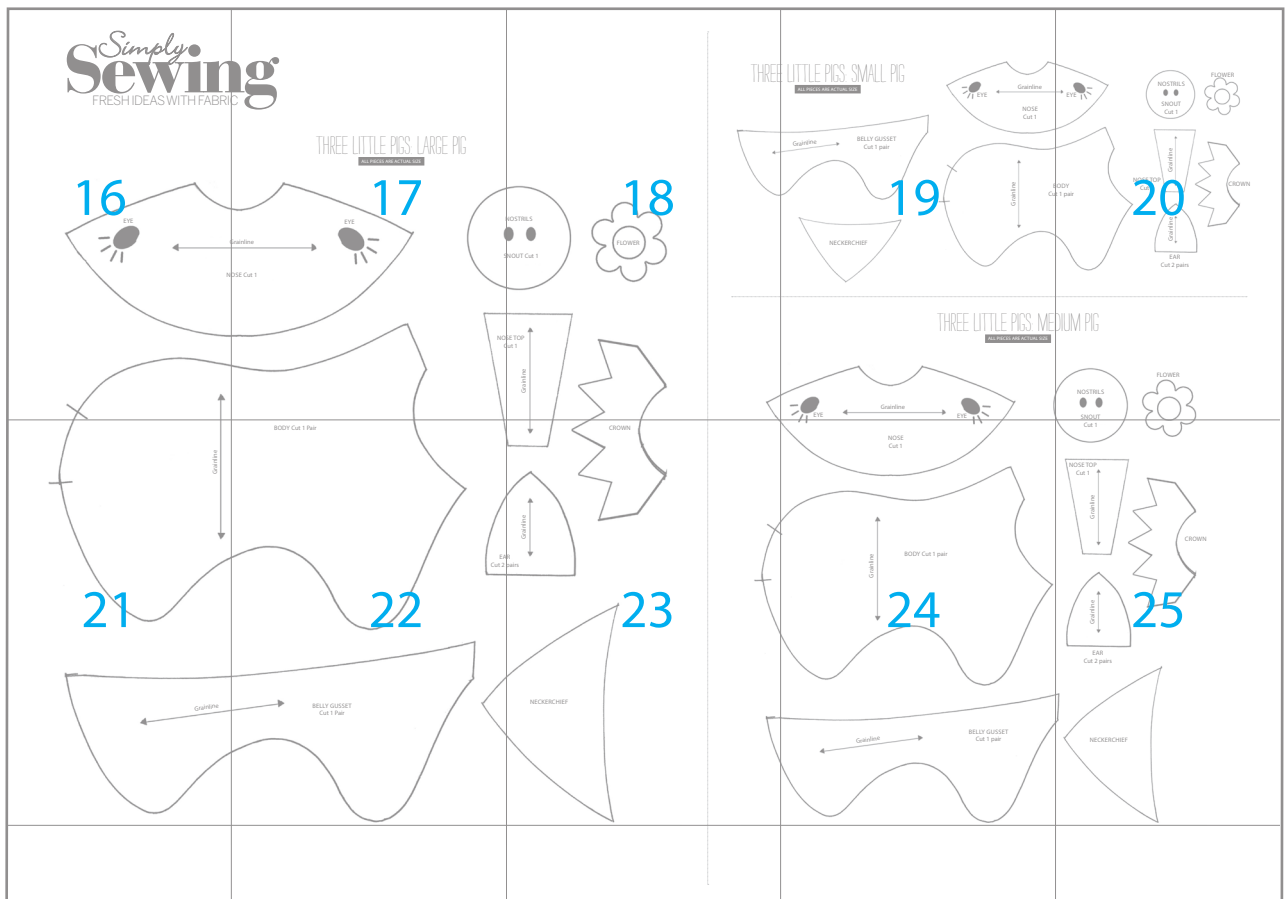
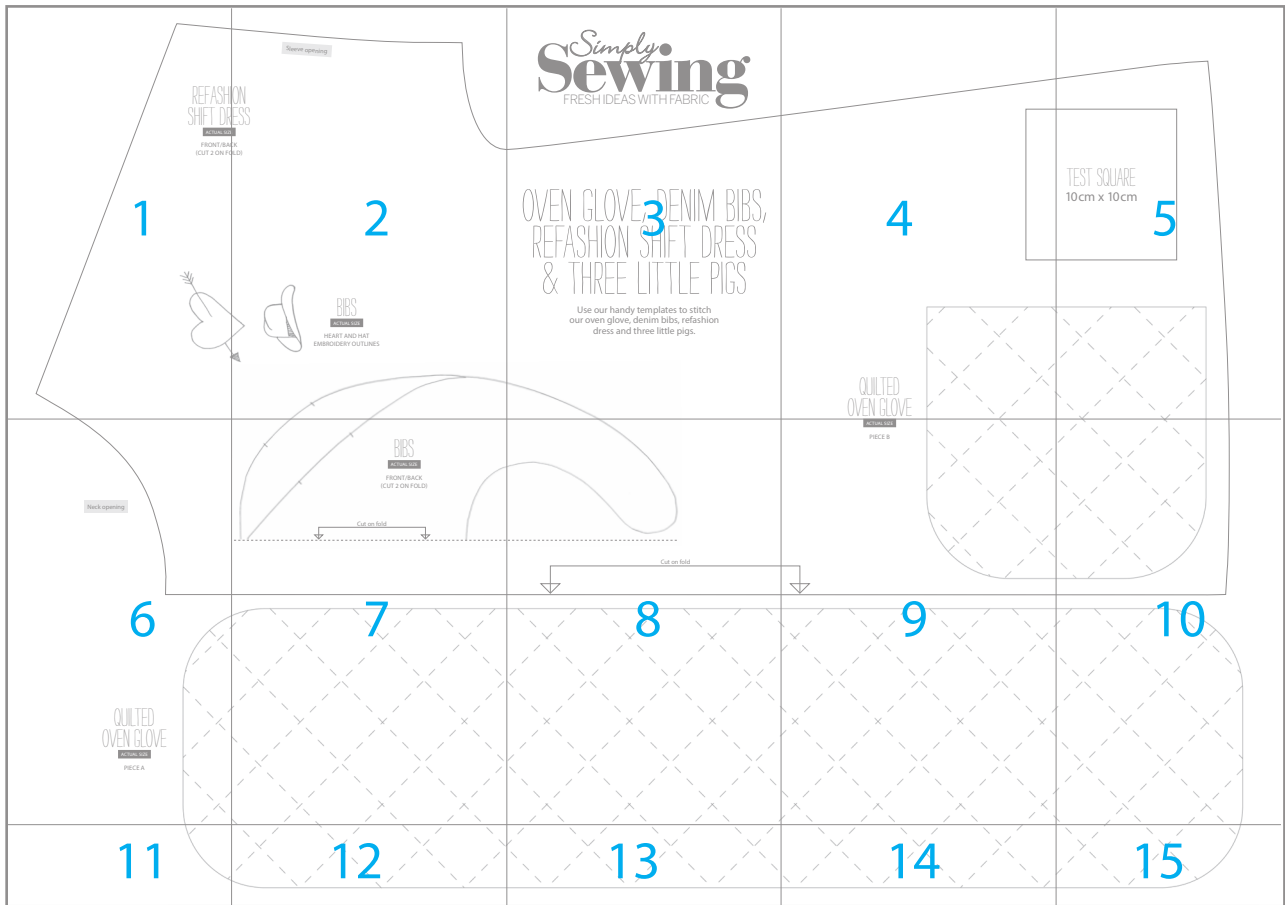


HOW TO PRINT THIS PATTERN

Print out this 25-page PDF on to A4 paper. Trim away the shaded border from each page and position the pages as below to assemble the pattern...





REFASHI
SHIFT DR

ACTUAL SIZE

FRONT/BAC
(CUT 2 ON FC

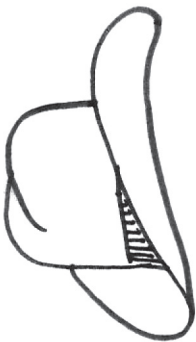


Sleeve opening

ON
ESS



CK
(LD)



BIBS

ACTUAL SIZE

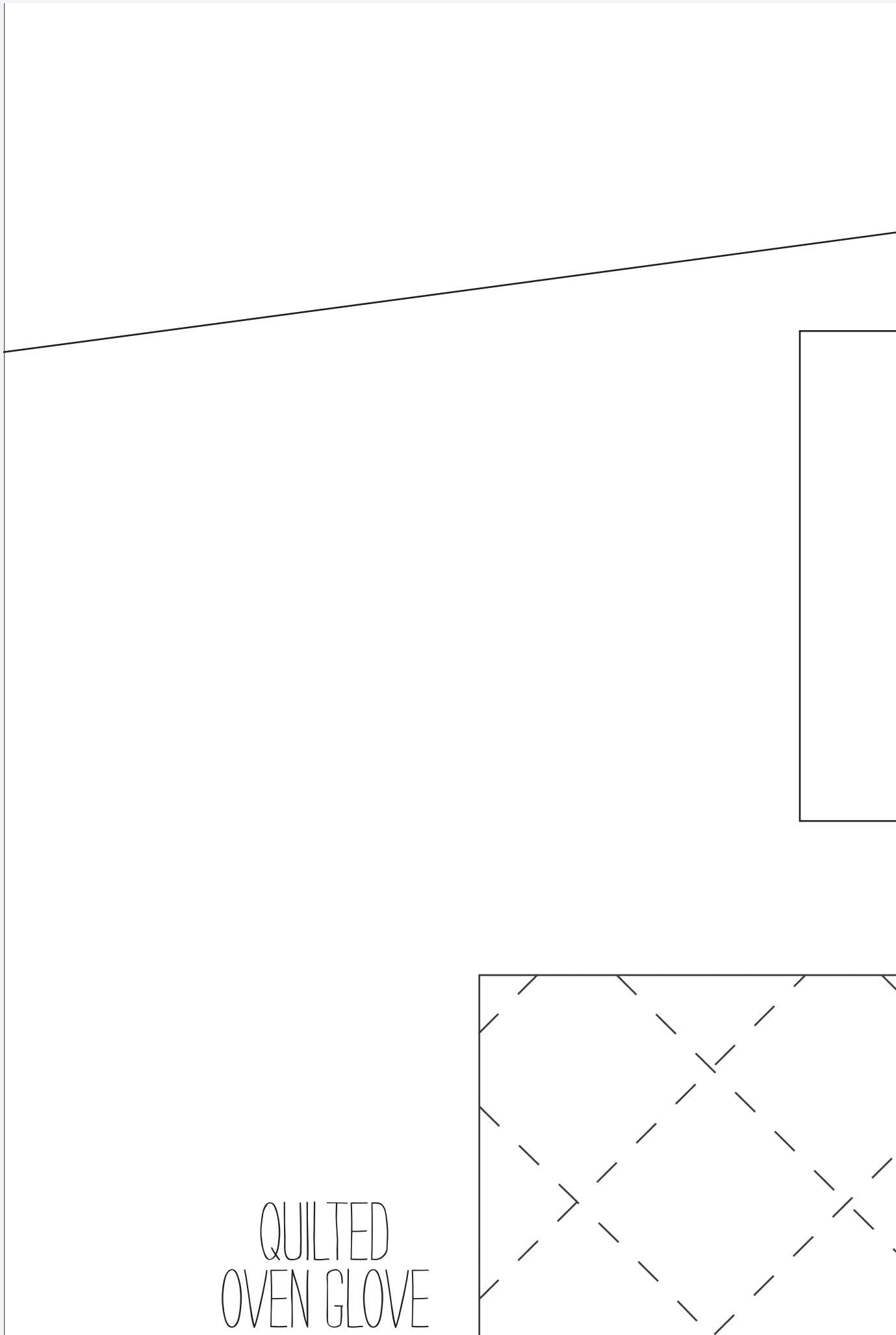
HEART AND HAT
EMBROIDERY OUTLINES

Simply. Sewing

FRESH IDEAS WITH FABRIC

OVEN GLOVE, DENIM BIBS,
REFASHION SHIFT DRESS
& THREE LITTLE PIGS

Use our handy templates to stitch
our oven glove, denim bibs, refashion
dress and three little pigs.



QUILTED
OVEN GLOVE



TEST SQUARE
10cm x 10cm

Neck opening

QUILTED
OVEN GLOVE

ACTUAL SIZE

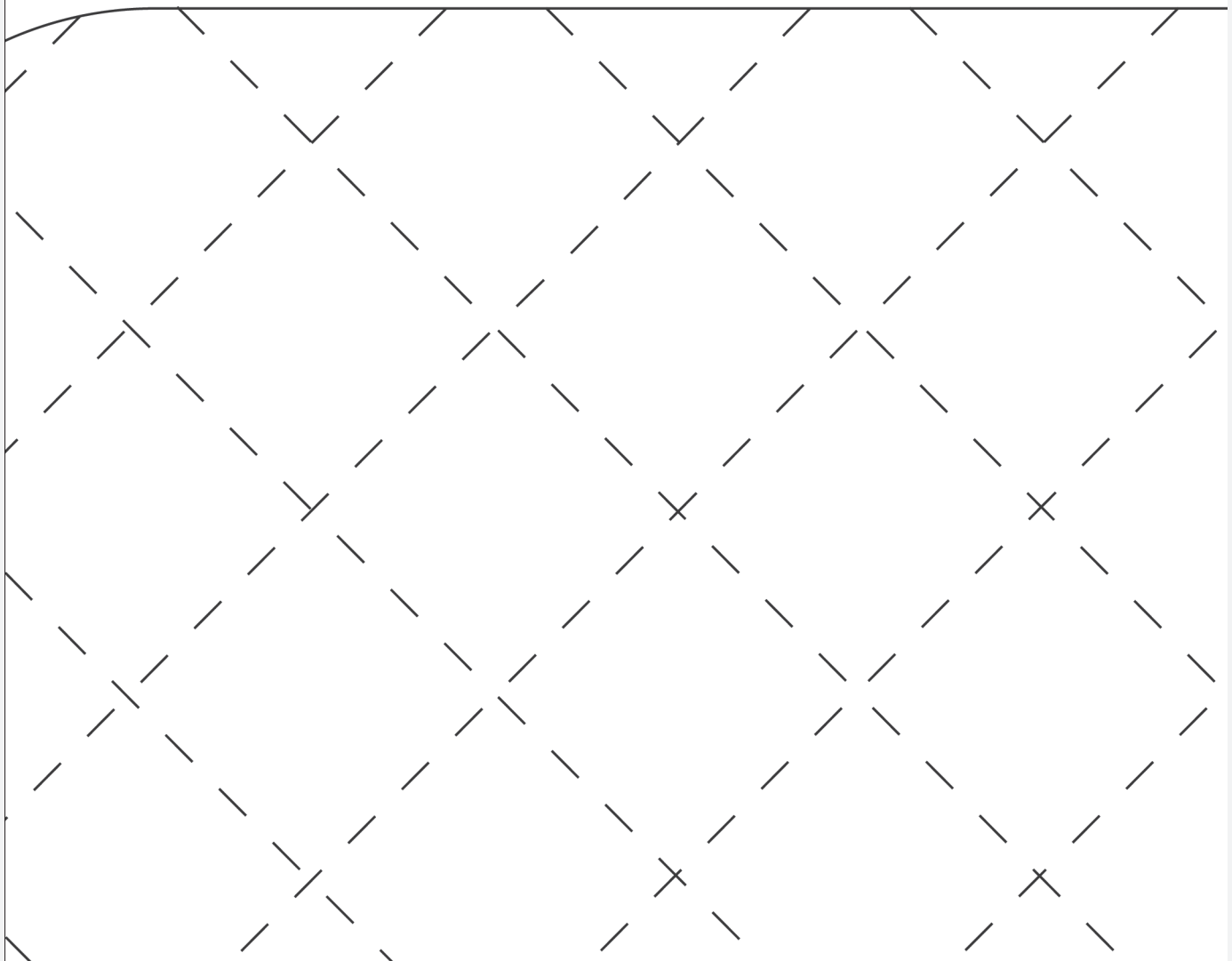
PIECE A

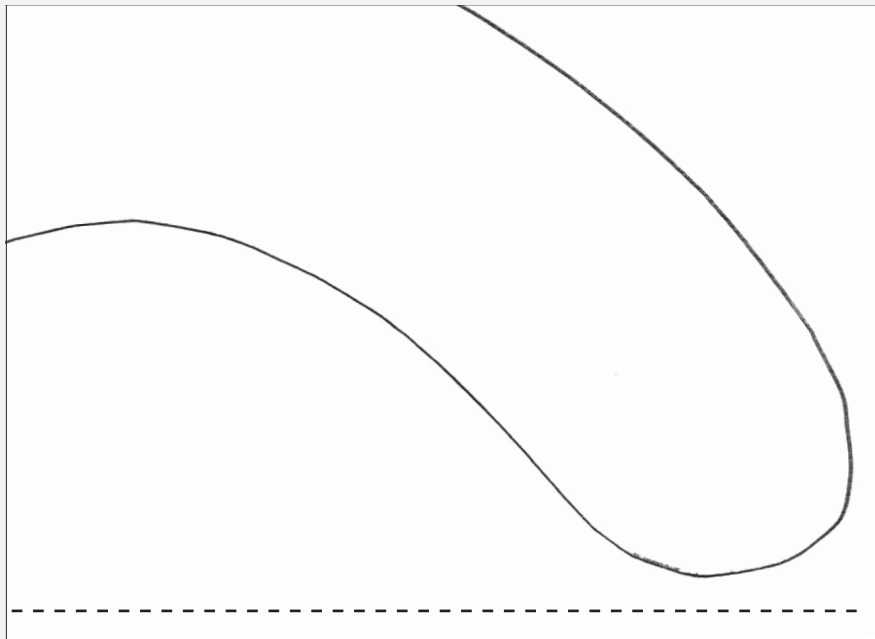
BIBS

ACTUAL SIZE

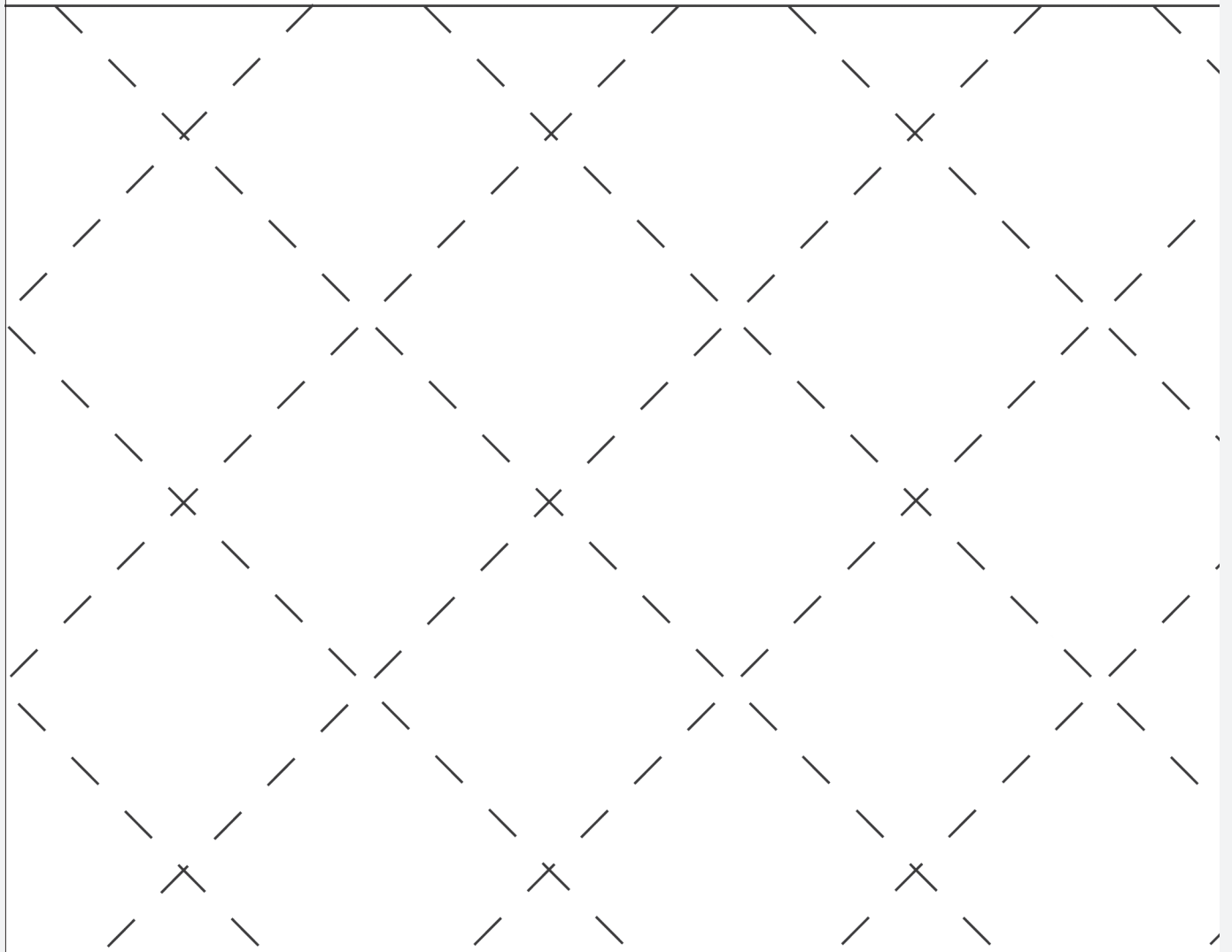
FRONT/BACK
(CUT 2 ON FOLD)

Cut on fold





Cut on fold



ACTUAL SIZE

PIECE B

