

## HOW TO PRINT THIS PATTERN

Print out this 30-page PDF on to A4 paper. Trim away the shaded border from each page and position the pages as below to assemble the pattern...

**1** SEW ALONG BOW BLOUSE  
TILT AND THE BUTTONS

**2** BOW BLOUSE  
FRONT BODICE  
CUT ON FOLD  
Place on fold

**3** BOW BLOUSE  
BACK BODICE  
CUT ON FOLD  
Place on fold

**4** SLEEVE  
Place on fold

**5**

**6** PATTERN SIZE KEY  
SIZE 1  
SIZE 2  
SIZE 3  
SIZE 4  
SIZE 5  
SIZE 6  
SIZE 7  
SIZE 8

**7**

**8**

**9**

**10**

**11**

**12** BOW BLOUSE  
COLLAR  
CUT 2 ON FOLD

Use these templates to sew the tilly and the buttons and blanket stitch beds, plus a yoga mat bag, denim bag, bag and dress-up plate board and mount.

Simply Sewing FRESH IDEAS WITH FABRIC

Copyright © 2014 Simply Sewing Ltd. All rights reserved. This pattern is for personal use only. It may not be reproduced, stored in a retrieval system, or transmitted in any form or by any means, electronic, mechanical, photocopying, recording, or by any information storage and retrieval system, without the prior written permission of Simply Sewing Ltd.

**13** CUSHION SEGMENT

**14** CUSHION SEGMENT

**15** BOW BLOUSE  
FRONT BODICE  
CUT ON FOLD  
Place on fold

**16** BOW BLOUSE  
BACK BODICE  
CUT ON FOLD  
Place on fold

**17**

**18** SLIPPER SOLE  
UPPER  
SOLE

**19** COSMETIC CASE

**20** SLIPPER

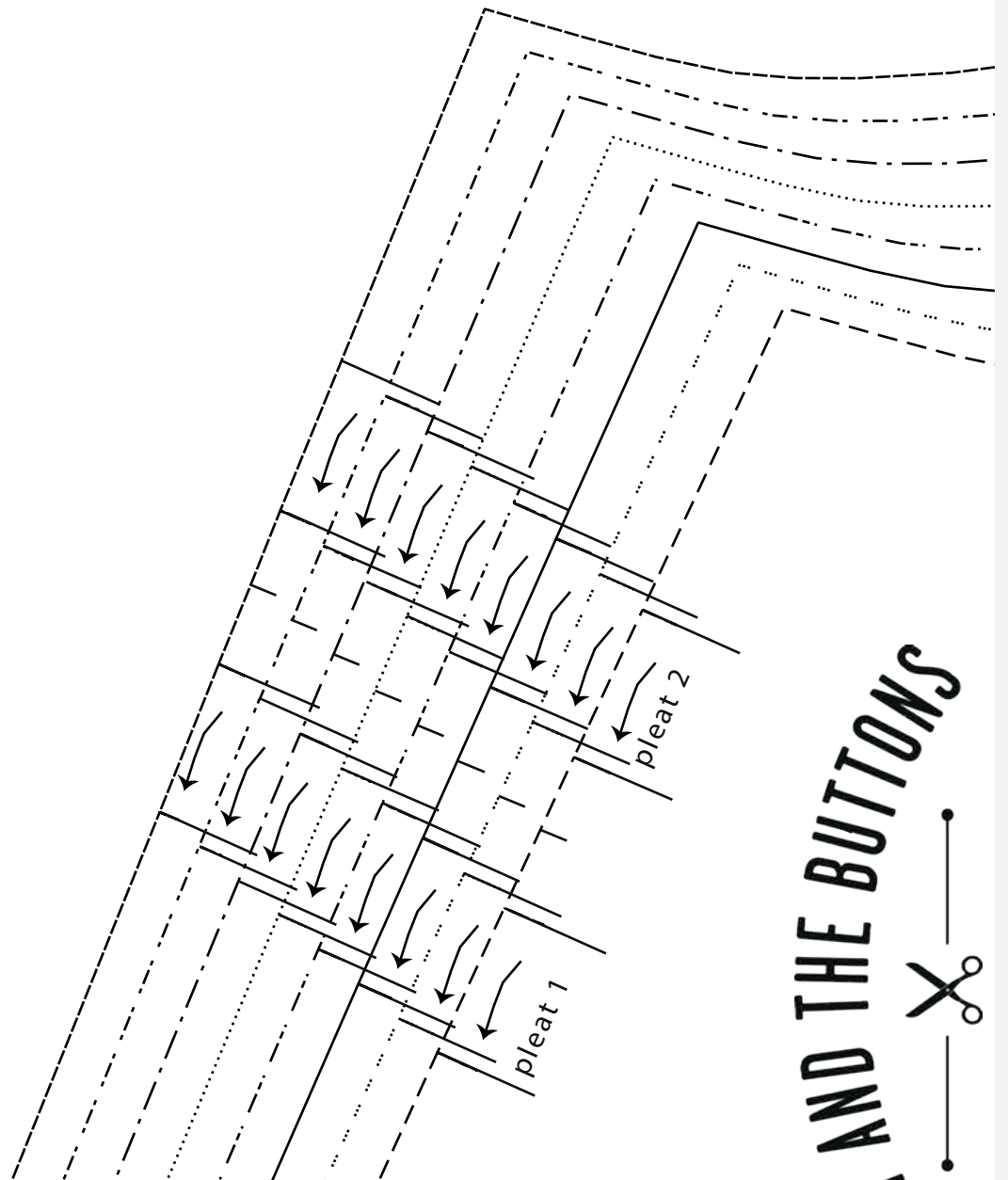
**21** DRESS UP  
BEARD AND  
MOUSTACHE

**22** YOGA MAT BAG  
BAG END

Simply Sewing FRESH IDEAS WITH FABRIC

Copyright © 2014 Simply Sewing Ltd. All rights reserved. This pattern is for personal use only. It may not be reproduced, stored in a retrieval system, or transmitted in any form or by any means, electronic, mechanical, photocopying, recording, or by any information storage and retrieval system, without the prior written permission of Simply Sewing Ltd.

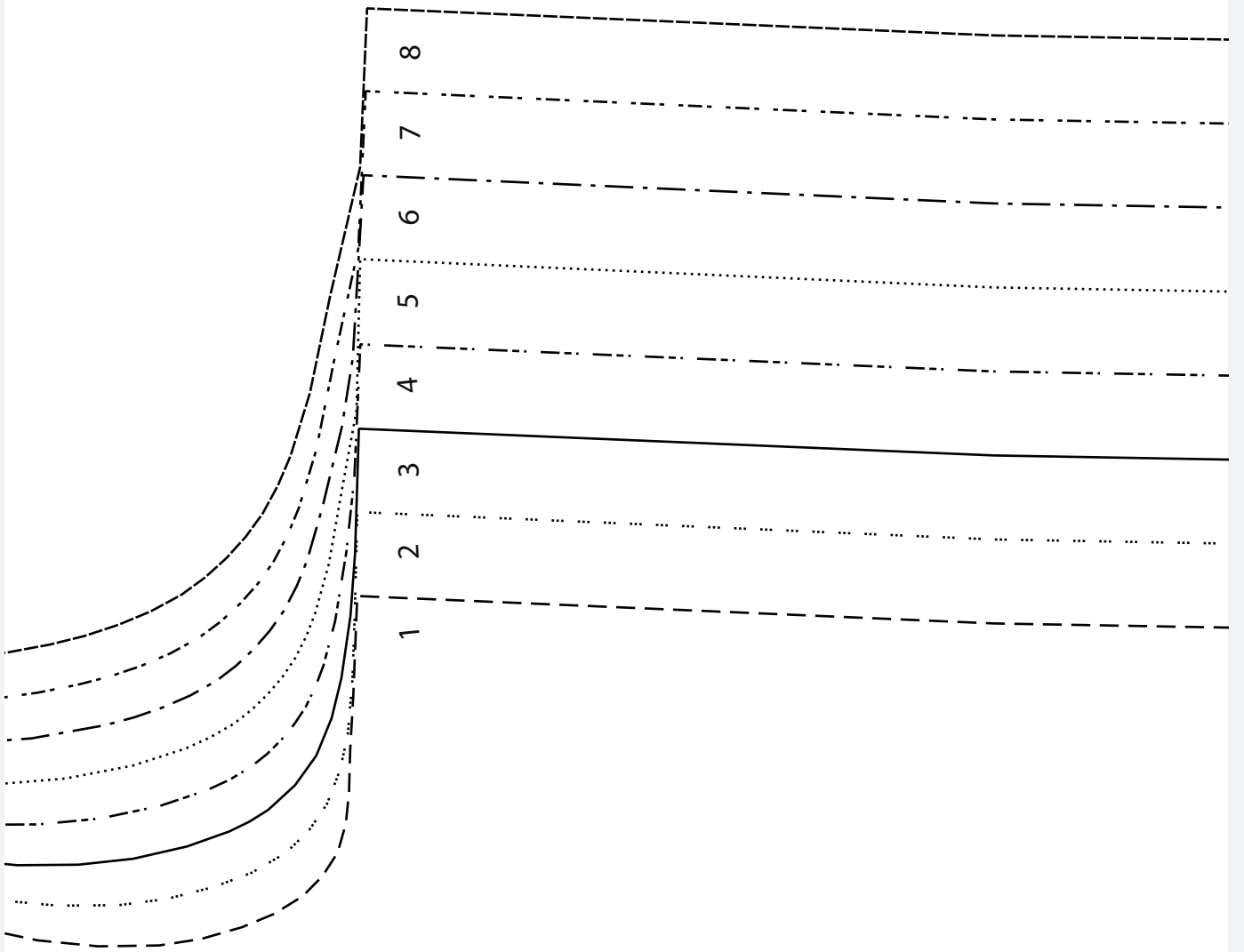
# SEW ALONG BOW BLOUSE



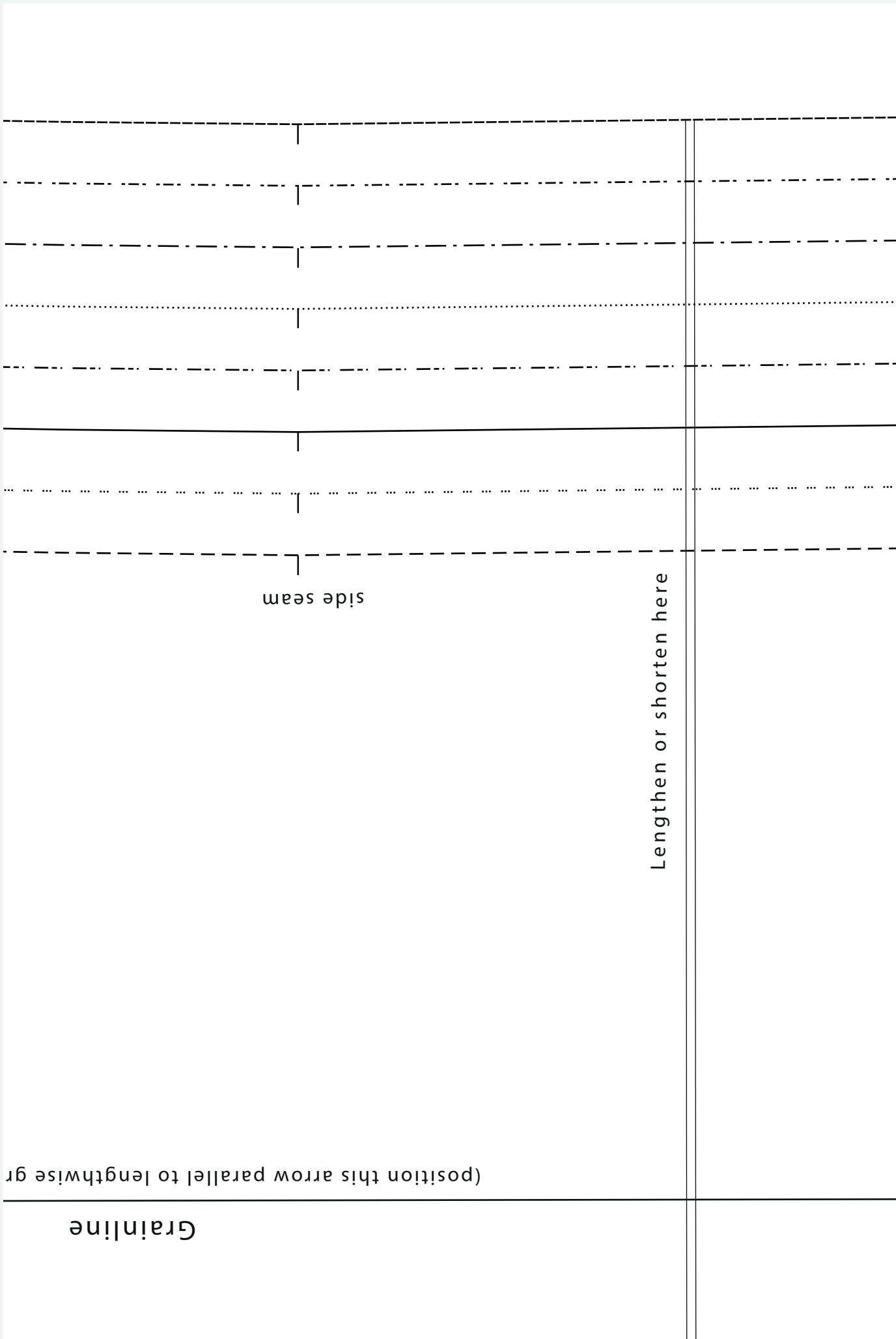
**AND THE BUTTONS**  
✂

# LOW BLOUSE

FRONT BODICE  
CUT 1 ON FOLD



Grain of fabric

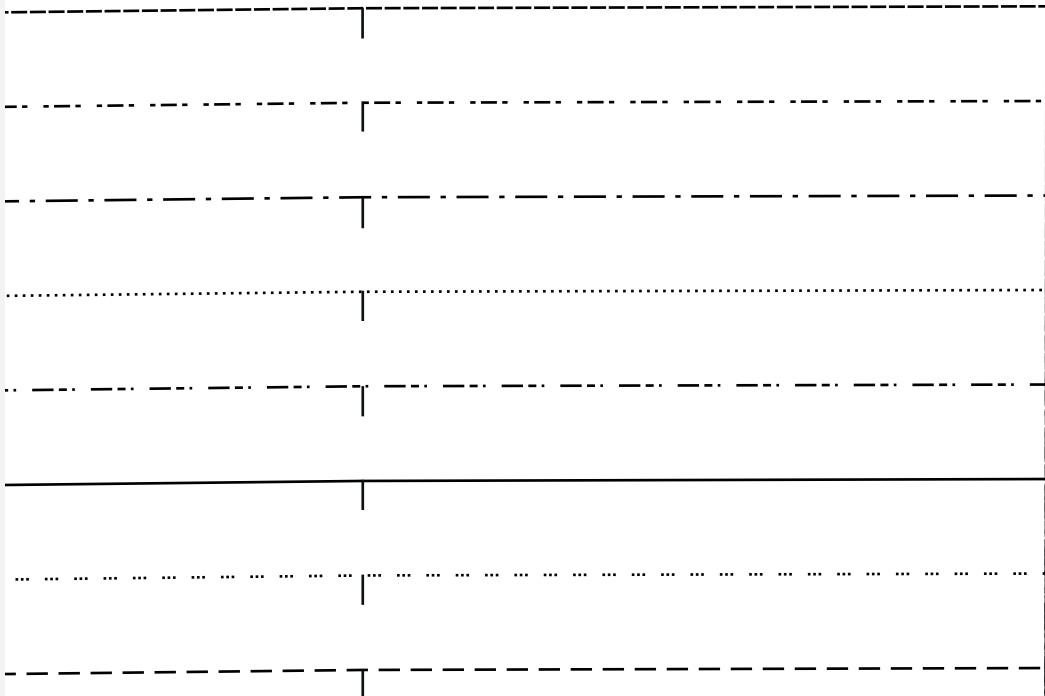


side seam

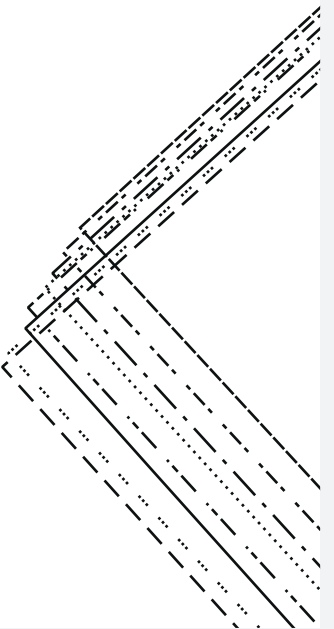
Lengthen or shorten here

Grainline

(position this arrow parallel to lengthwise gr



side split notch

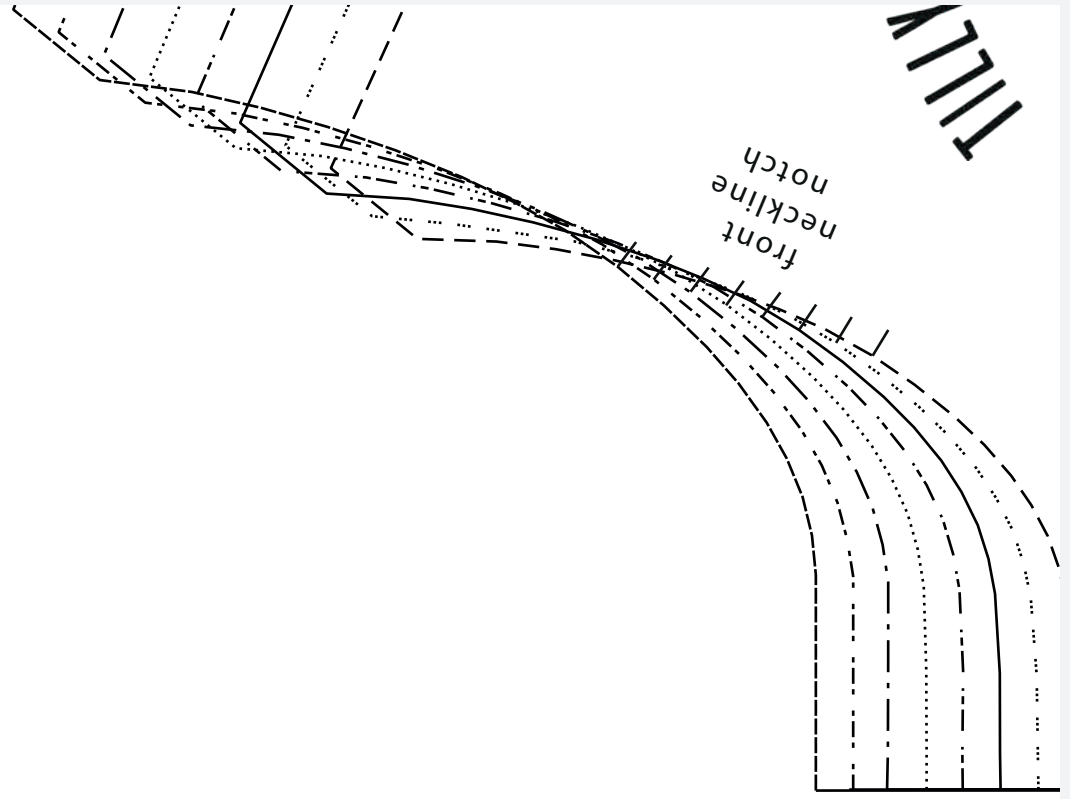




# Simply Sewing

FRESH IDEAS WITH FABRIC

Use these templates to sew the Tilly and the Buttons sew along bow blouse, bedroom accessories, pouffe and blanket stitch birds, plus a yoga mat bag, denim lunch bag and dress-up pirate beard and moustache.



BC

neckline

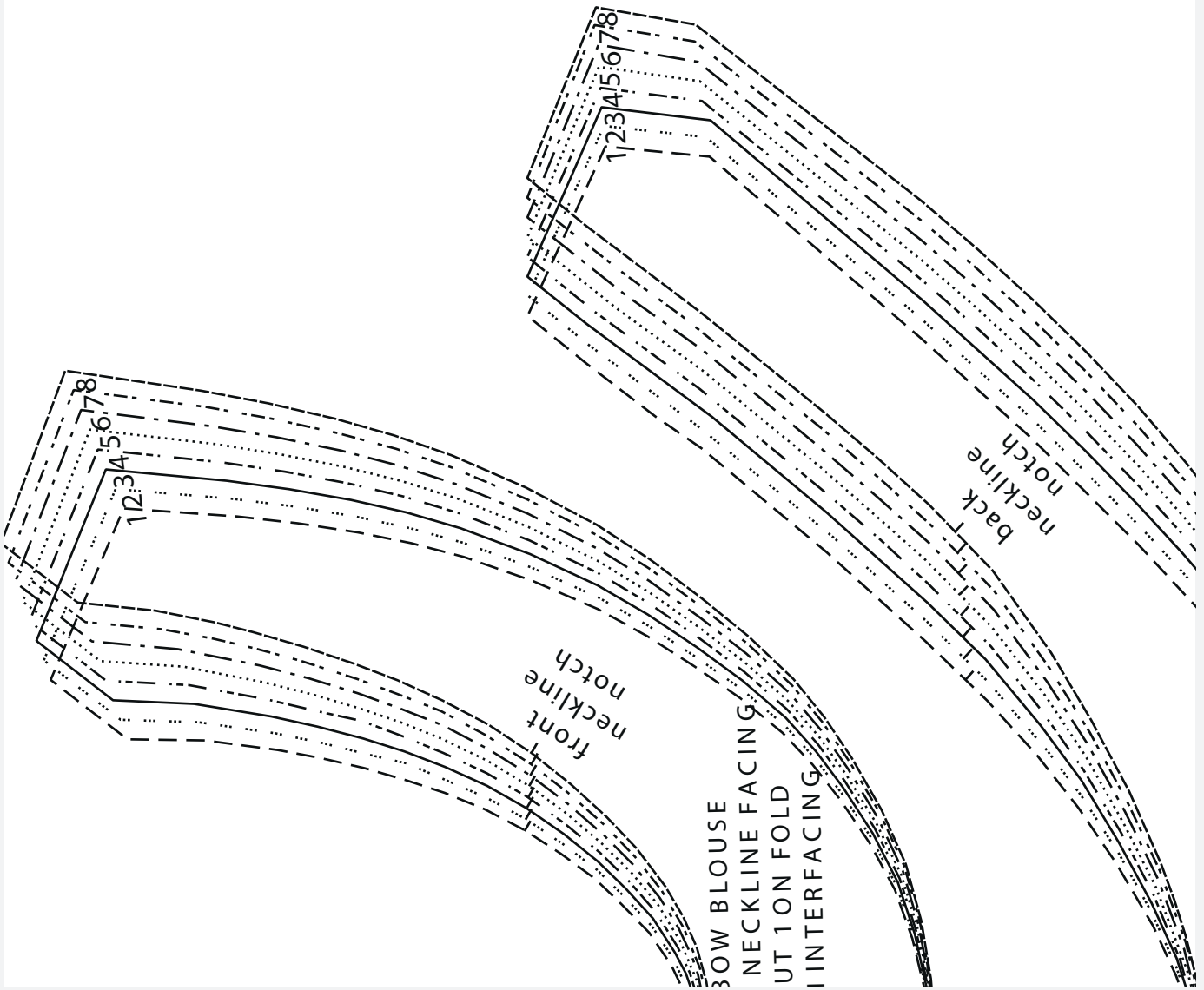
PATTERN SIZE KEY

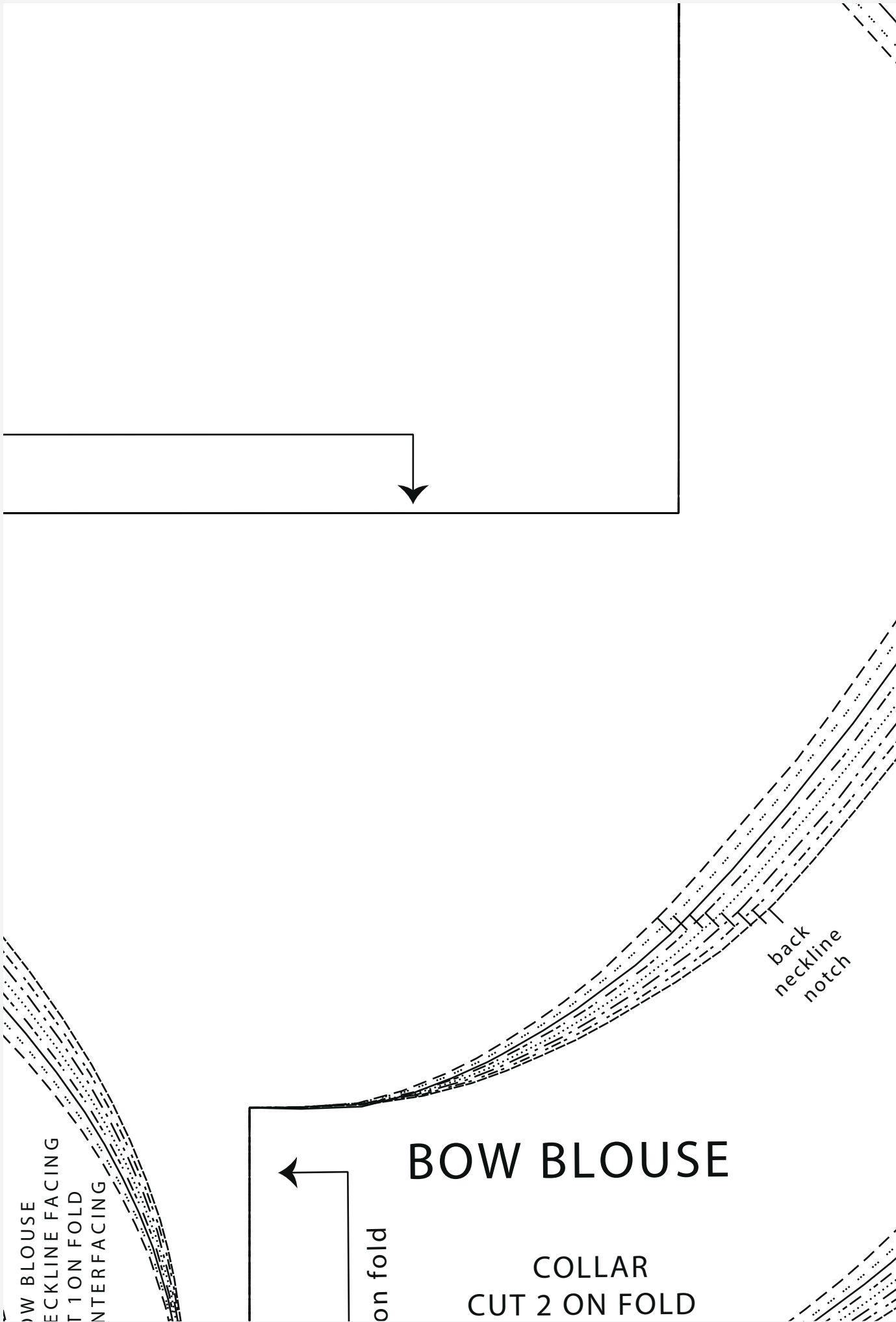
- SIZE 1 -----
- SIZE 2 ..... ..
- SIZE 3 \_\_\_\_\_
- SIZE 4 - - - - -
- SIZE 5 .....
- SIZE 6 - - - - -
- SIZE 7 - - - - -
- SIZE 8 -----





Place on fold





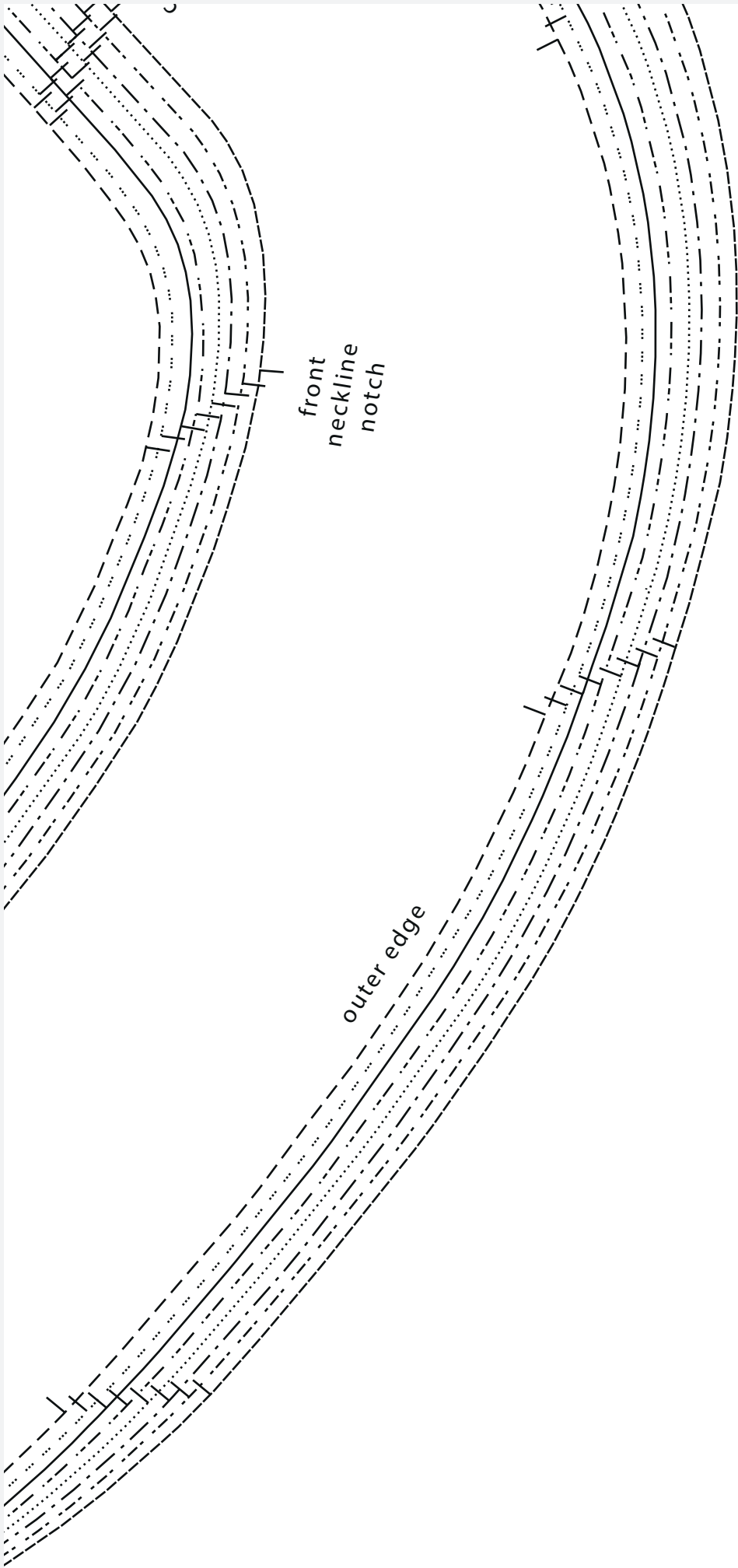
BOW BLOUSE  
 NECKLINE FACING  
 CUT 1 ON FOLD  
 INTERFACING

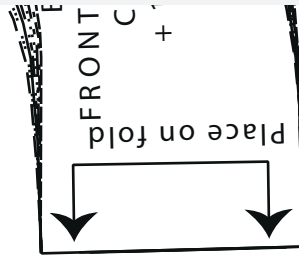
# BOW BLOUSE

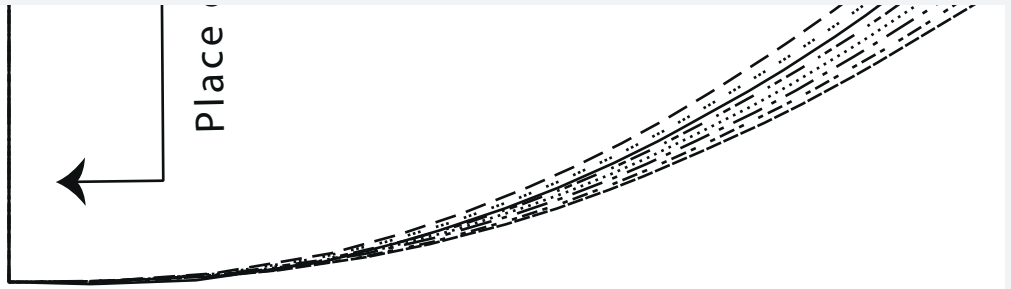
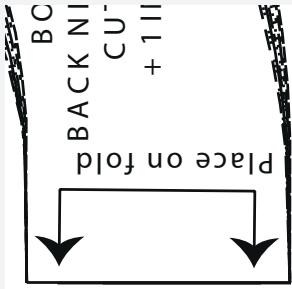
COLLAR  
 CUT 2 ON FOLD

back  
 neckline  
 notch

on fold





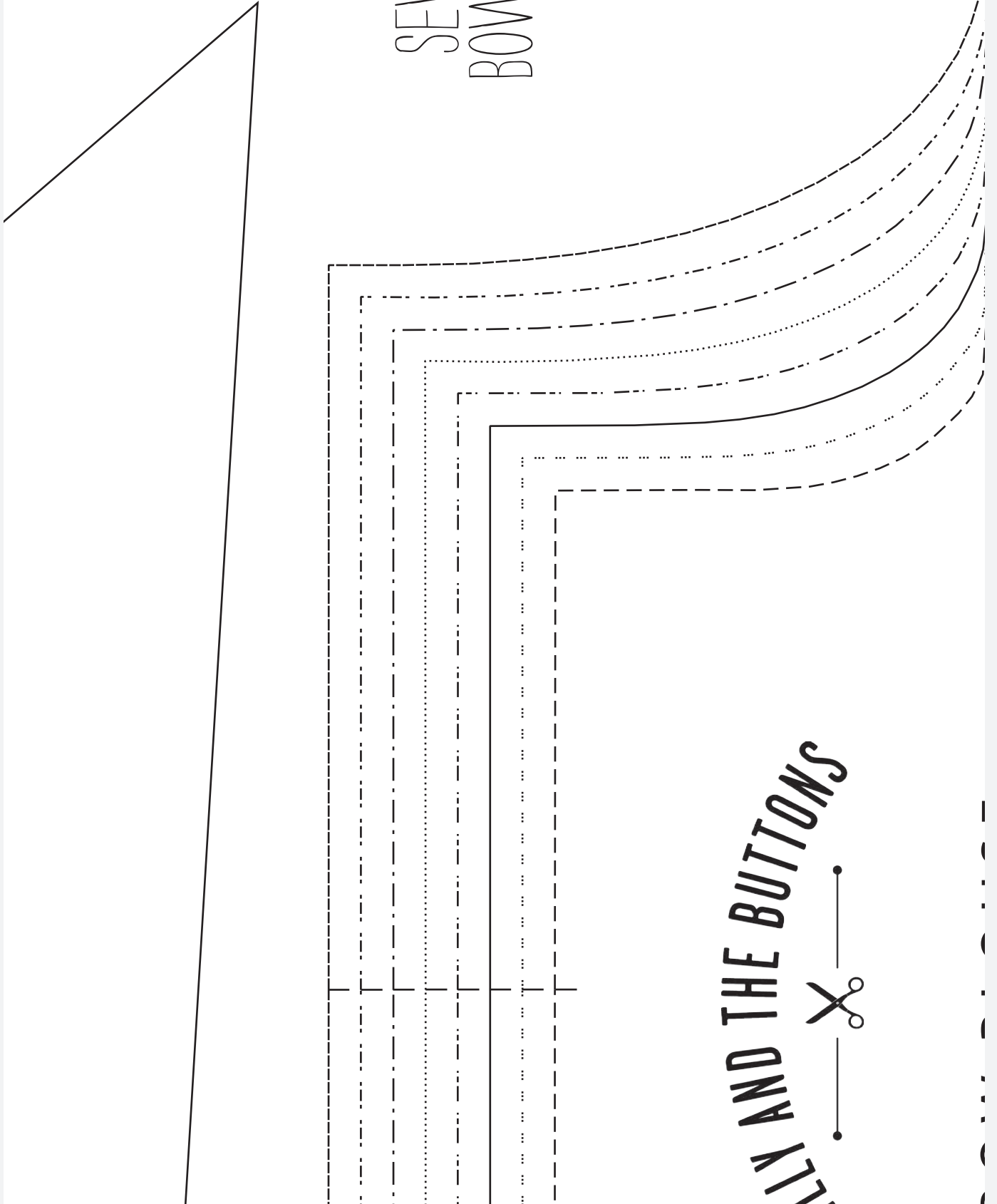


Thank you for making these projects from *Simply Sewing*. The copyright for these templates belongs to the designer of the project. They work hard to create projects for you to enjoy, so please don't re-sell or distribute their work without permission. Please do not make any part of the templates or instructions available to others through your website or a third party website, or copy it multiple times without our permission. Copyright law protects creative work and unauthorised copying is illegal. We really appreciate your help. Find more templates and ideas at [www.simplysewingmag.com](http://www.simplysewingmag.com)



CUSHION  
SEGMENT

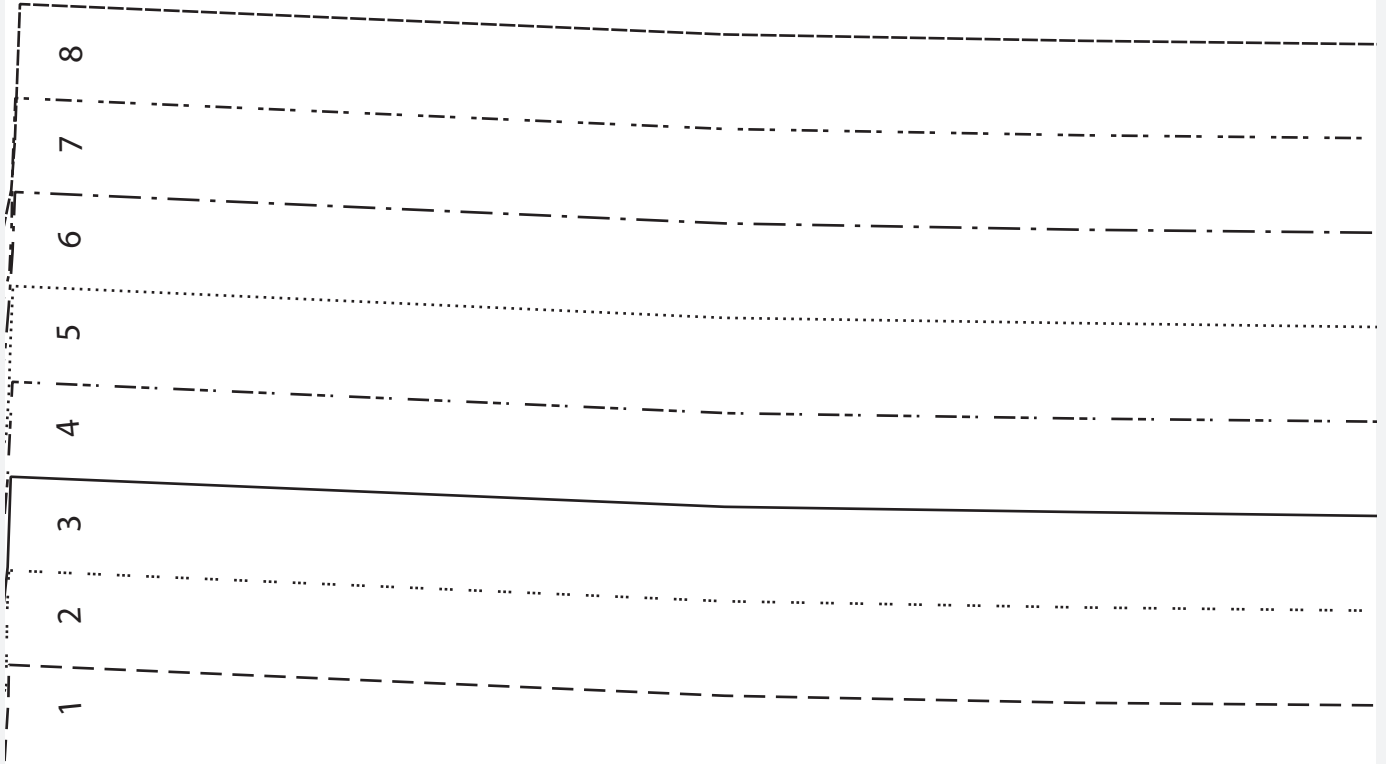
SEW ALONG  
BOW BLOUSE



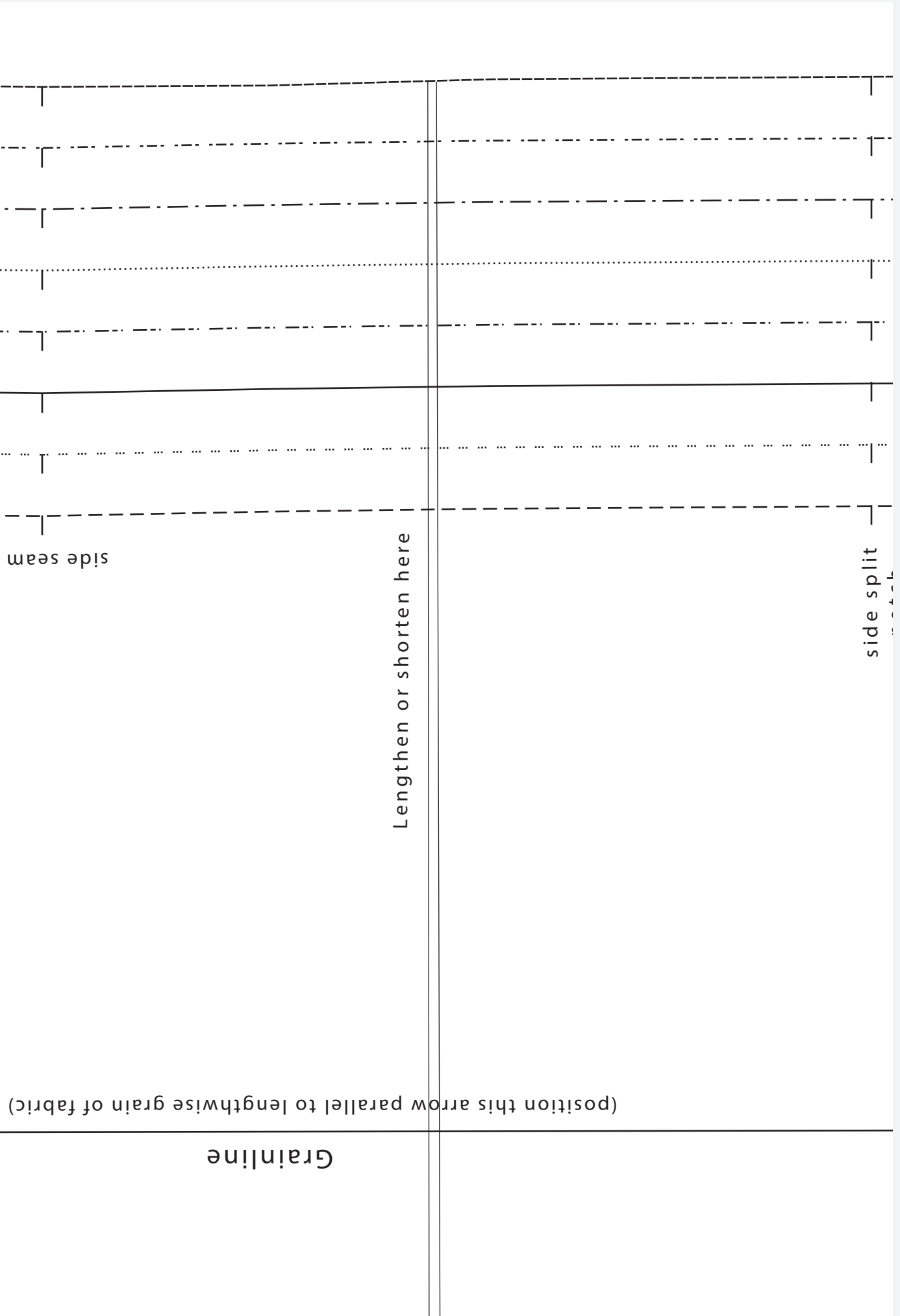
**FINISH THE BOW AND THE BUTTONS**  
✂

# BOW BLOUSE

BACK BODICE  
CUT 1 ON FOLD





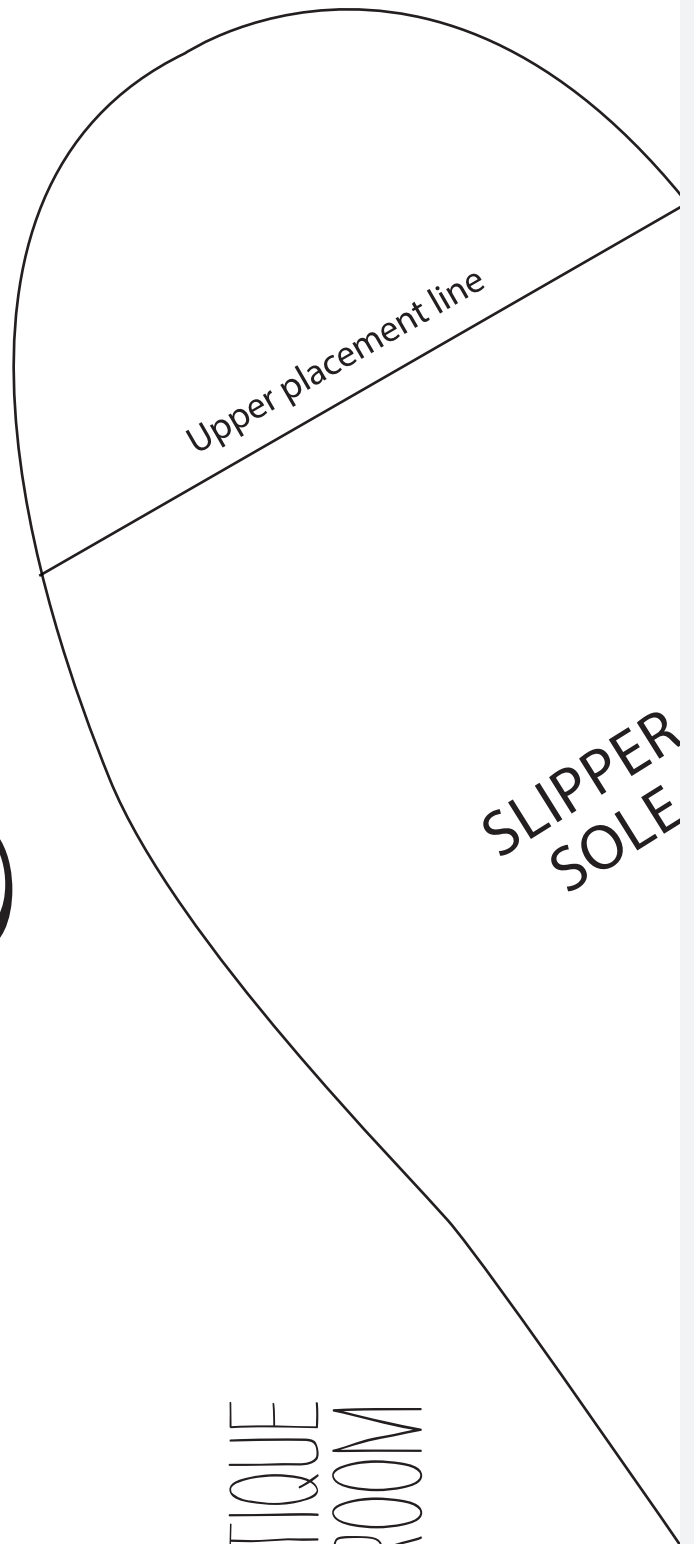


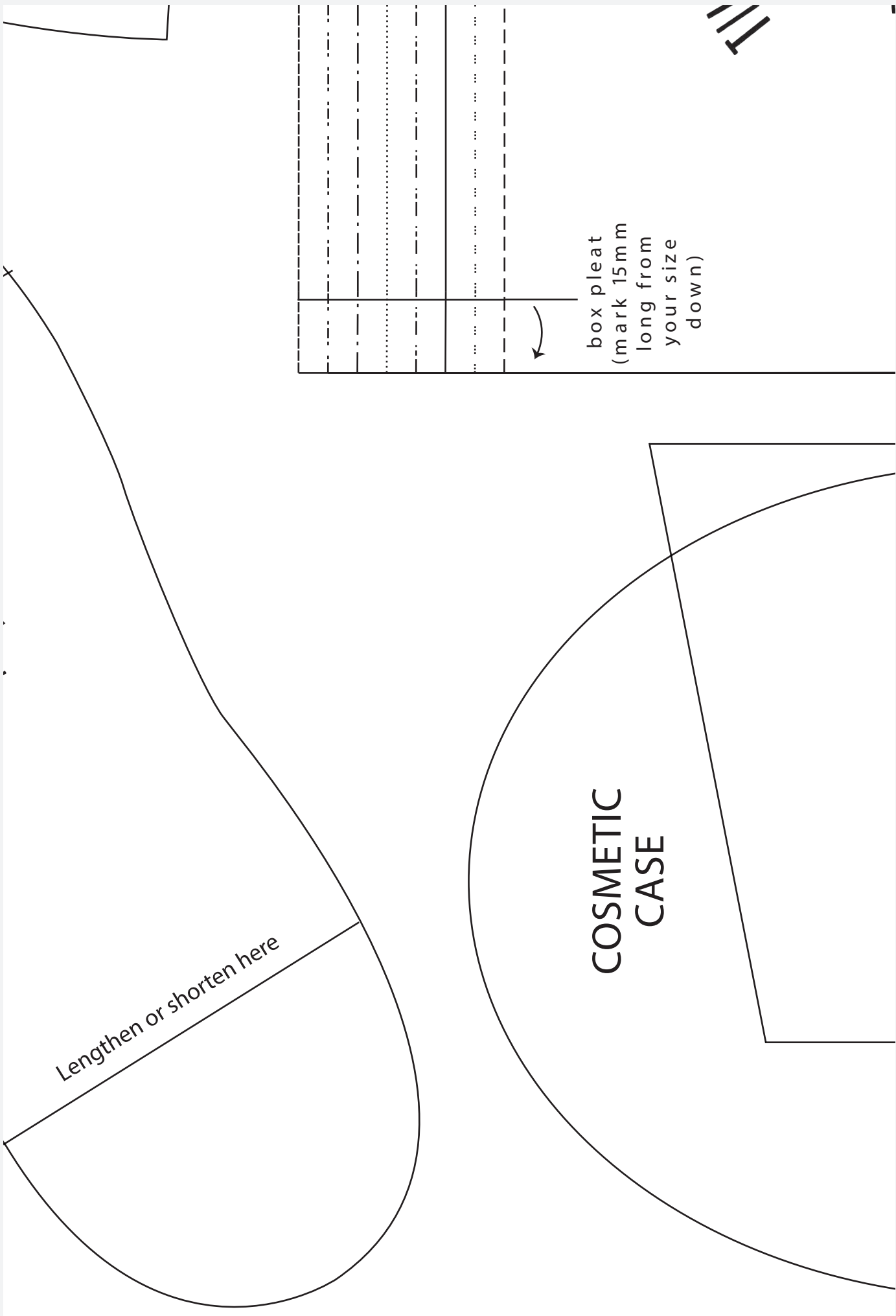
notcn



*Simply.*  
**SEWING**  
FRESH IDEAS WITH FABRIC

BOUTIQUE  
BEDROOM

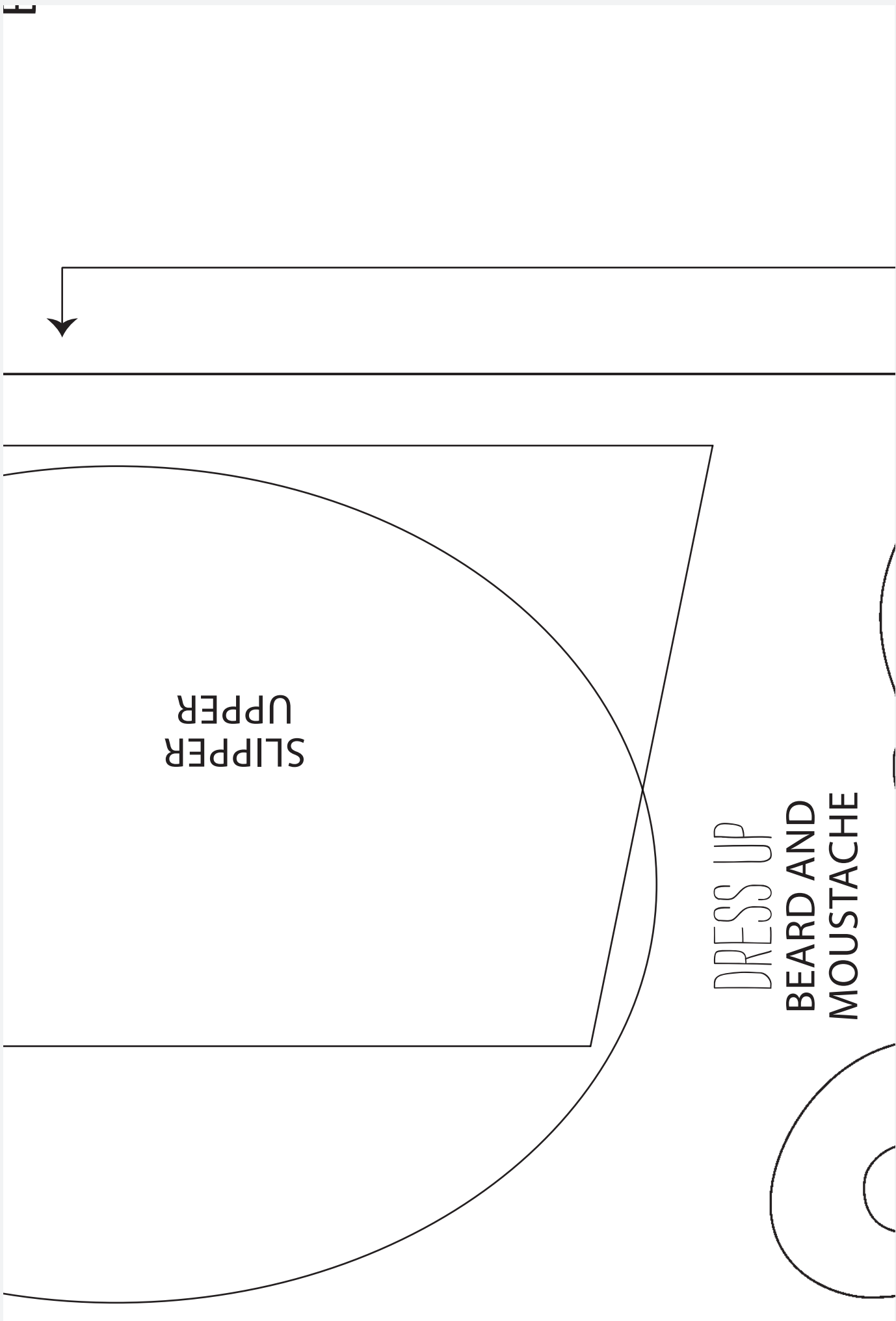




Lengthen or shorten here

**COSMETIC  
CASE**

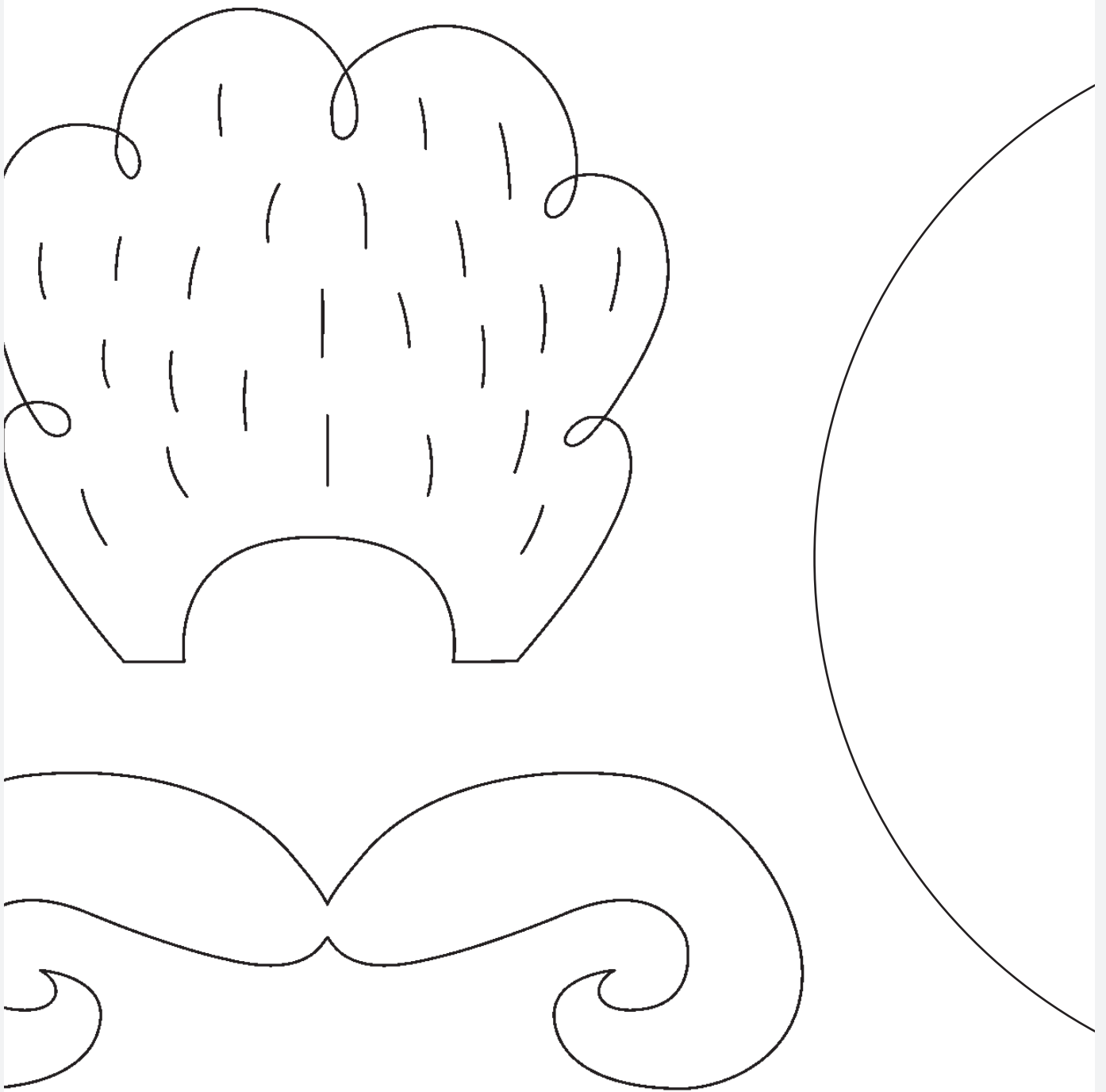
box pleat  
(mark 15mm  
long from  
your size  
down)



SLIPPER  
UPPER

DRESS UP  
BEARD AND  
MOUSTACHE

Place on fold



YOGA MAT BAG  
BAG END

