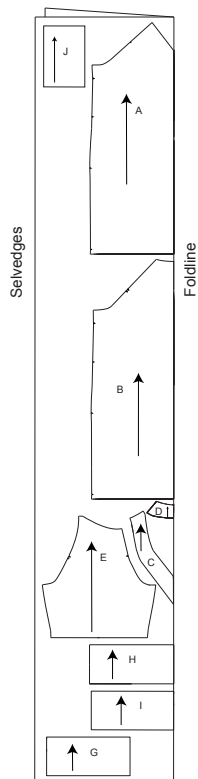


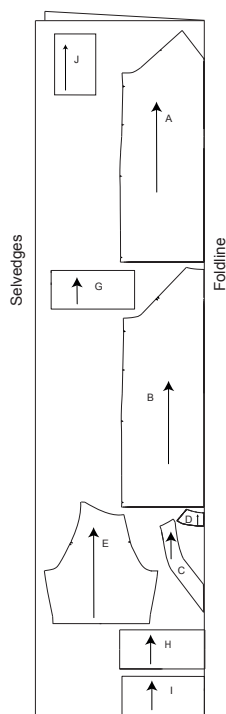
THE JODIE DRESS

CUTTING LAYOUTS

DRESS
115CM - 3.2M ALL SIZES



DRESS
140CM - 2.9M ALL SIZES



PATTERN MARKINGS

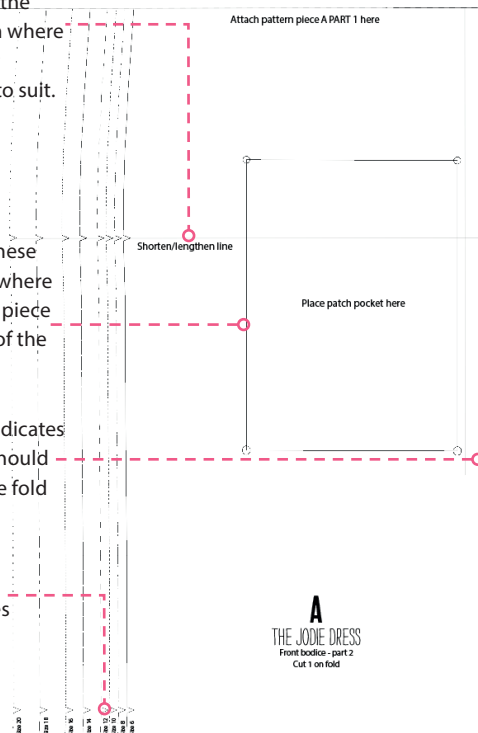
Shorten/lengthen lines:

These lines indicate the point on the pattern where you can lengthen or shorten the bodice to suit.

Grainline arrows: These are to let you know where to place the pattern piece along the grainline of the fabric.

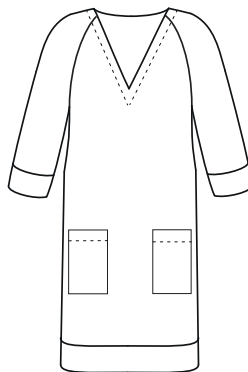
Foldline: This line indicates where the pattern should be positioned on the fold of the fabric.

Notches: These are marked on the edges and are mostly used for matching up pattern pieces.

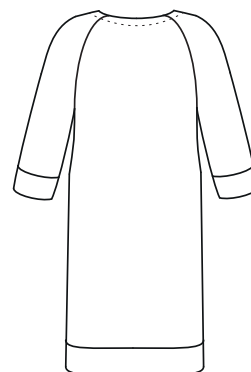


DIAGRAMS DRESS

FRONT



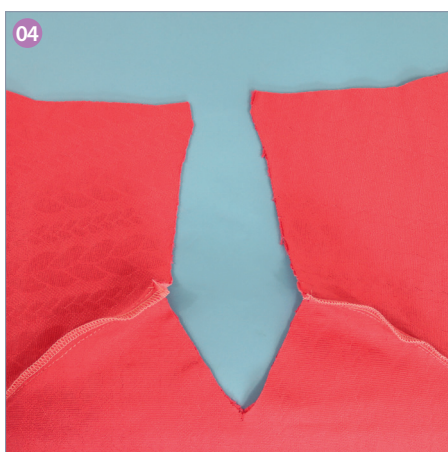
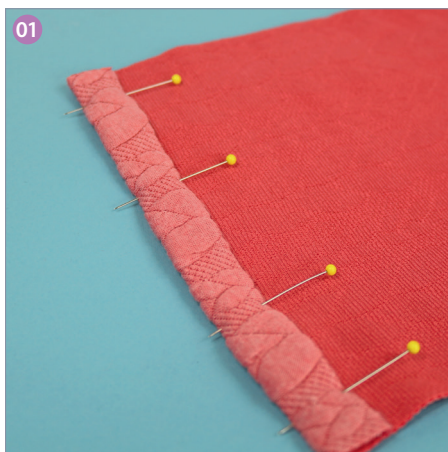
BACK



FINISHED GARMENT FITTED MEASUREMENTS

SIZE	UK	6	8	10	12	14	16	18	20
	US	4	6	8	10	12	14	16	18
	EUR	34	36	38	40	42	44	46	48
BUST	cm	95	97.5	100	103	108	113	120.5	128
	in	37.5	38.5	39.5	40.5	42.5	44.5	47.5	50.5
WAIST	cm	96.5	99	101.5	104	109	114.5	112	129.5
	in	38	39	40	41	43	45	48	51
HIPS	cm	99	101.5	104	106.5	111.5	117	124.5	132
	in	39	40	41	42	44	46	49	52

THE JODIE DRESS



YOU WILL NEED

- Main fabric 3.2mx115cm (3½ydsx45in), all sizes
- Ribbing fabric (optional) 1mx115cm (1½ydx45in) of for the cuffs, neckband and hem
- Ball point sewing machine needle
- Twin needle sewing machine needle
- Matching thread
- Basic sewing kit

NOTES

- Use a 1.5cm (¾in) seam allowance unless otherwise stated.
- Twin needle method: Overlock the raw edge, fold under by 1cm (¾in) and then stitch in place from the right side with a twin needle.

SUGGESTED FABRICS

Medium-weight sweater, fleece or ponte roma fabric.

STITCHING TERMS

Press: Press all the seams where suggested in the instructions to achieve a smoother finish on your finished garment.

Right side (RS)/Wrong side (WS): The right side of the fabric has the design on it. For a plain fabric, the right side is usually a little brighter or

shinier than the wrong side, which is normally a little duller.

CUTTING OUT

Step one Download, print and cut out the templates from www.simplysewingmag.com/downloads

Step two From the main fabric cut:
 Front bodice (A) – cut 1 on fold.
 Back bodice (B) – cut 1 on fold.
 Front facing (C) – cut 1 on fold.
 Back facing (D) – cut 1 on fold.
 Sleeve (E) – cut 1 pair
 Sleeve cuff (G) – cut 1 pair
 Front hem band (H) – cut 1 on fold
 Back hem band (I) – cut 1 on fold
 Patch pocket (J) – cut 1 pair.

MAKING THE DRESS

ATTACHING THE PATCH POCKETS

Step one To create the patch pockets, first press over 1cm (¾in) and then 2cm (¾in) to the WS along one short edge. Topstitch close to the folded edge. ⁰¹

Step two Finish the seams of the remaining three raw edges. Press over these three edges by 1cm (¾in). ⁰²

Step three Pin the patch pockets to the front

bodice using the marks on the pattern. Topstitch in place around the three sides of each patch pocket, 2-3mm (¼in) from the pressed edge. Press in place. ⁰³

ATTACHING THE SLEEVES

Step one With RS of the fabric together, pin the sleeves to the front bodice along the raglan seams, matching notches.

Step two Stitch the sleeves to the front bodice, removing the pins as you sew.

Step three Finish the seams then press the seam allowance towards the back. ⁰⁴

Step four Pin the sleeves to the back bodice as before, with RS together along the raglan seams, matching the notches.

Step five Stitch the sleeves to the back bodice, removing the pins as you sew.

Step six Finish the seams. Press the seam allowance towards the front.

STITCHING THE NECKLINE

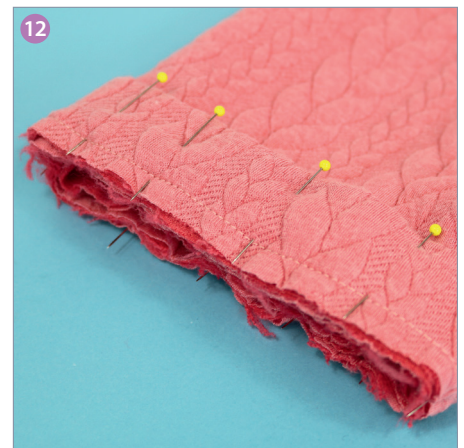
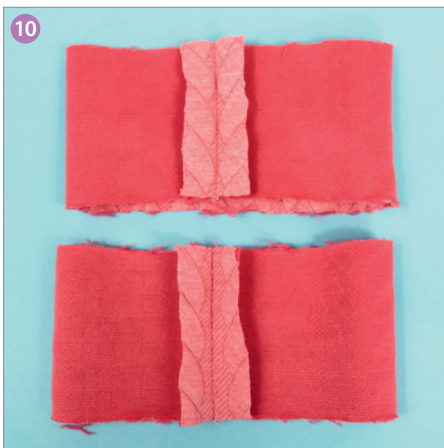
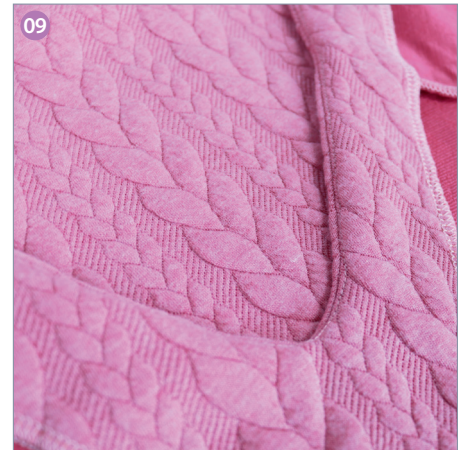
Step one Finish the short raw edges of the front and back facing pieces. ⁰⁵

Step two Stitch the front and back facing pieces RS together at the short seams. Press the seams open. ⁰⁶

Step three Finish the outer raw edge of the assembled facing piece.

Step four Pin the facing around the neckline of

THE JODIE DRESS



the bodice with RS together. Stitch in place with a 1cm ($\frac{3}{8}$ in) seam allowance. ⁰⁷

Step five Trim down the neckline seam allowance to around 7mm ($\frac{3}{4}$ in). Clip into the seam allowance around the curved edges. Snip into the centre front V-neck opening. ⁰⁸

Step six Press the facing towards the seam allowance. Understitch the facing to the seam allowance around neckline. Start and finish at the centre front. ⁰⁹

Step seven Fold the facing to the inside of the bodice and press the neckline in place. Pin the facing and the bodice together around the neckline.

Step eight Topstitch the bodice to the facing around the neckline approx 3cm ($1\frac{1}{4}$ in) from the pressed edge.

STITCHING THE SIDE SEAMS

Step one Stitch the side seams of the bodice and underarm seams of the sleeves. Starting at the hem of the sleeve with RS together, stitch towards the hem of bodice, making sure the seams at the underarm match.

Step two Finish the seams together and press them towards the back.

FINISHING THE CUFFS

Step one With RS of the sleeve cuff together, stitch the short edges together. Press the seam

allowance open. ¹⁰

Step two Fold the sleeve cuff in half with WS together, matching the raw edges, and press to create a fold along the centre.

Step three Machine-tack the raw edges together within the seam allowance. ¹¹

Step three Place the sleeve cuff around the sleeve hem, matching the raw edges and underarm seam, and pin in place.

Step four Stitch the cuff in place, removing the pins as you sew.

Step five Finish the seam allowance. Press the sleeve towards the seam allowance. ¹²

FINISHING THE HEM

Step one Stitch the short edges of the front and back hem pieces together RS facing. Press the seam allowance open.

Step two Fold the hem band in half WS together, matching the raw edges, and press. Machine-tack the raw edges together within the seam allowance.

Step three Place the hem cuff around the bodice hem, matching the raw edges and side seams, and pin in place.

Step four Stitch the hem cuff in place.

Step five Finish the seam allowances together and then press the seam allowance towards the dress bodice.

Step four Give your garment a final press.



Simply
Sewing
FRESH IDEAS WITH FABRIC
WWW.SIMPLYSEWINGMAG.COM

© Simply Sewing magazine. Supplied by Immediate Media Company Ltd, Bristol, BS1 3BN. To be used for individual, private home use only and not for commercial or manufacturing purposes. Not for resale.