

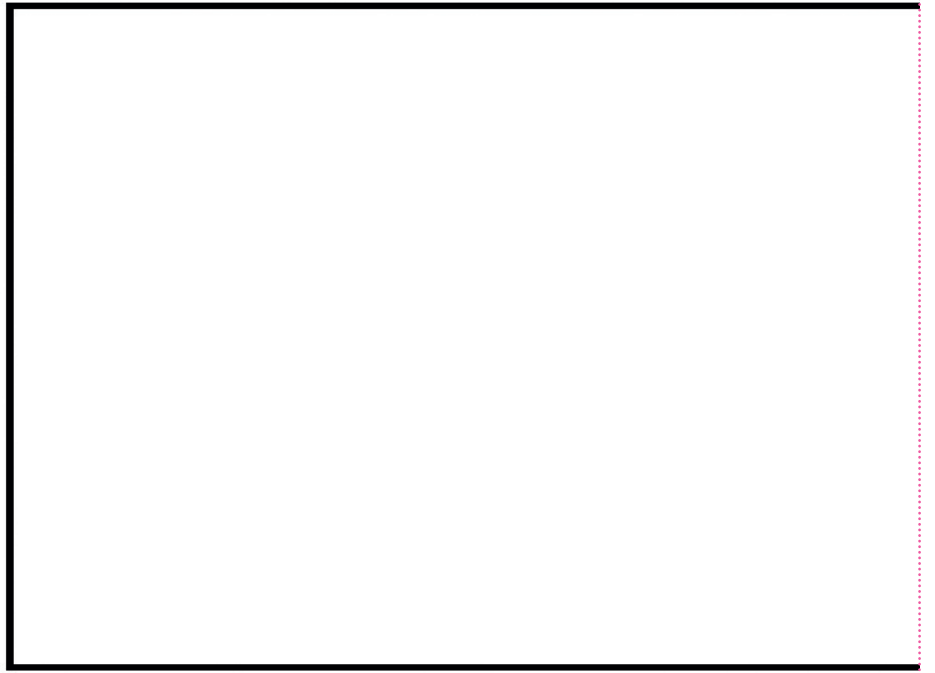
# TEMPLATES

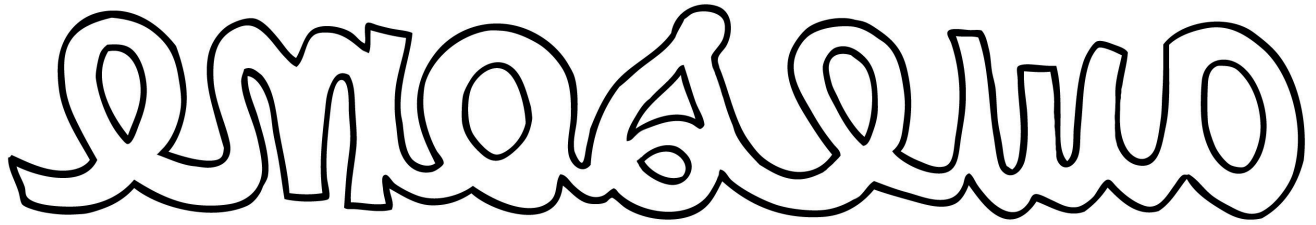
These templates are shown at 100% unless stated otherwise. Templates separated with pink dotted lines will need cutting out and joining together.

FLAG  
IT UP

PAGE 4

COPY AT 150%

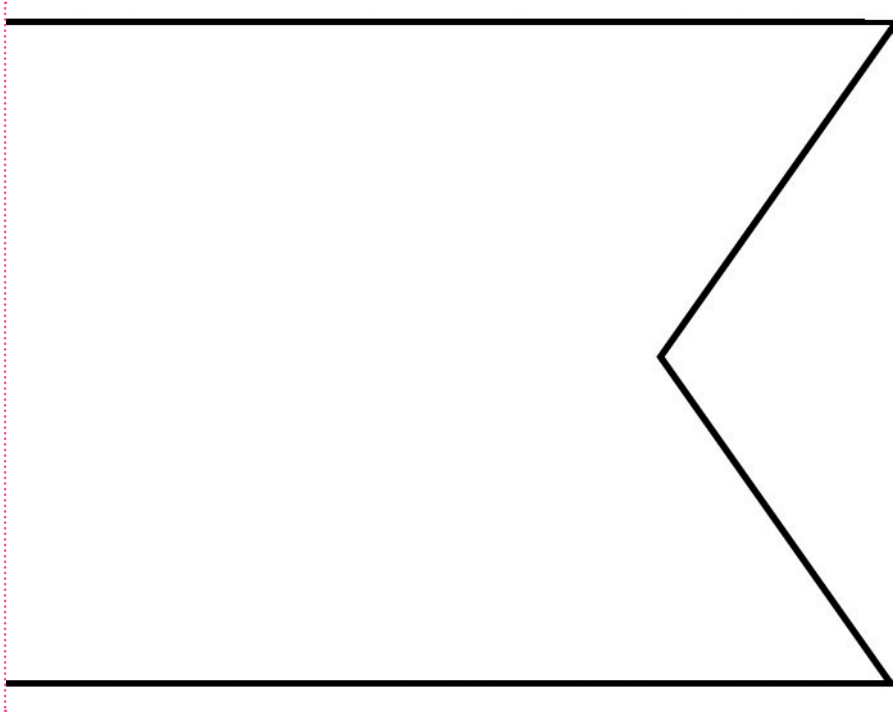




FLAG  
IT UP

PAGE 4

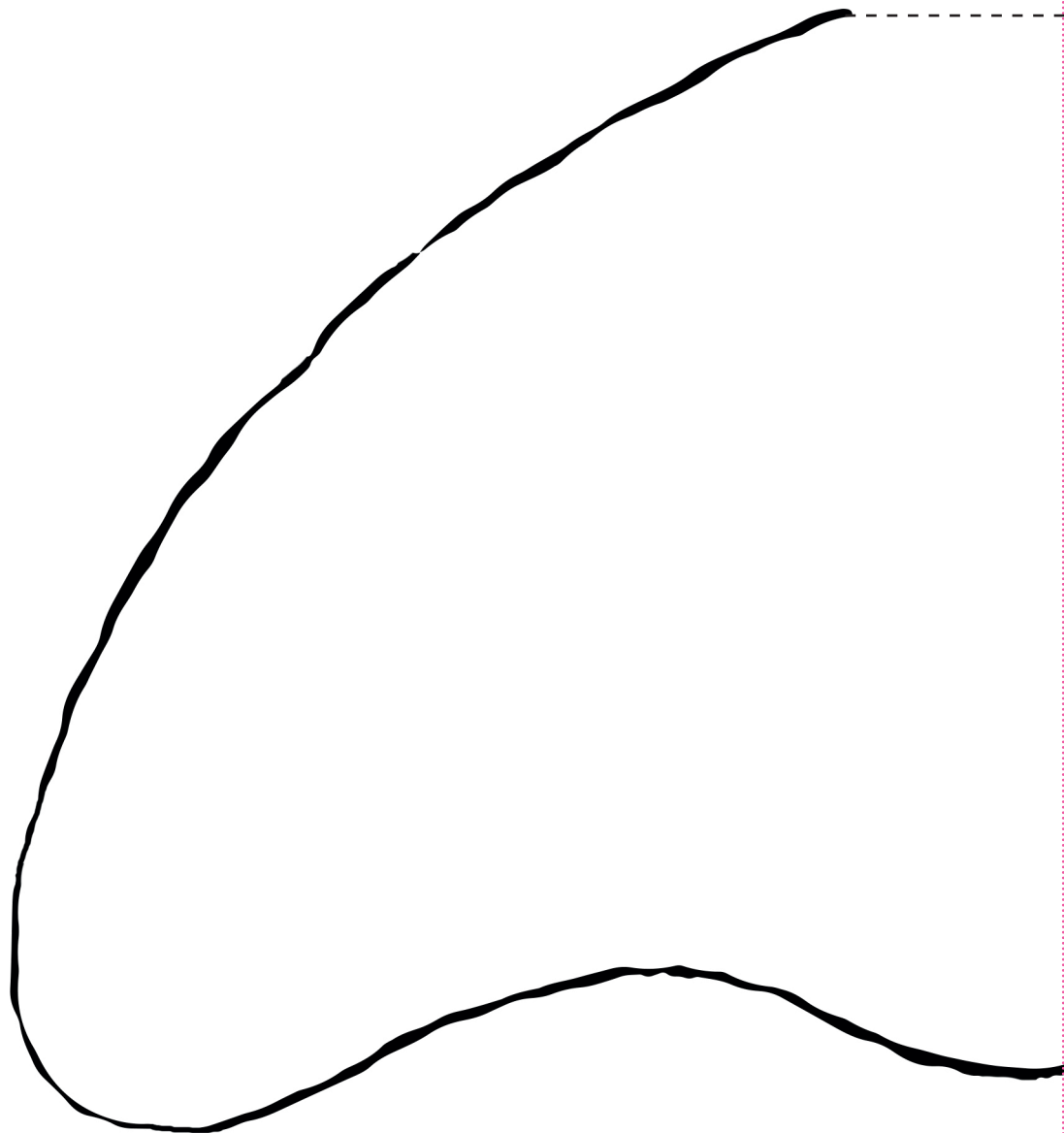
COPY AT 150%

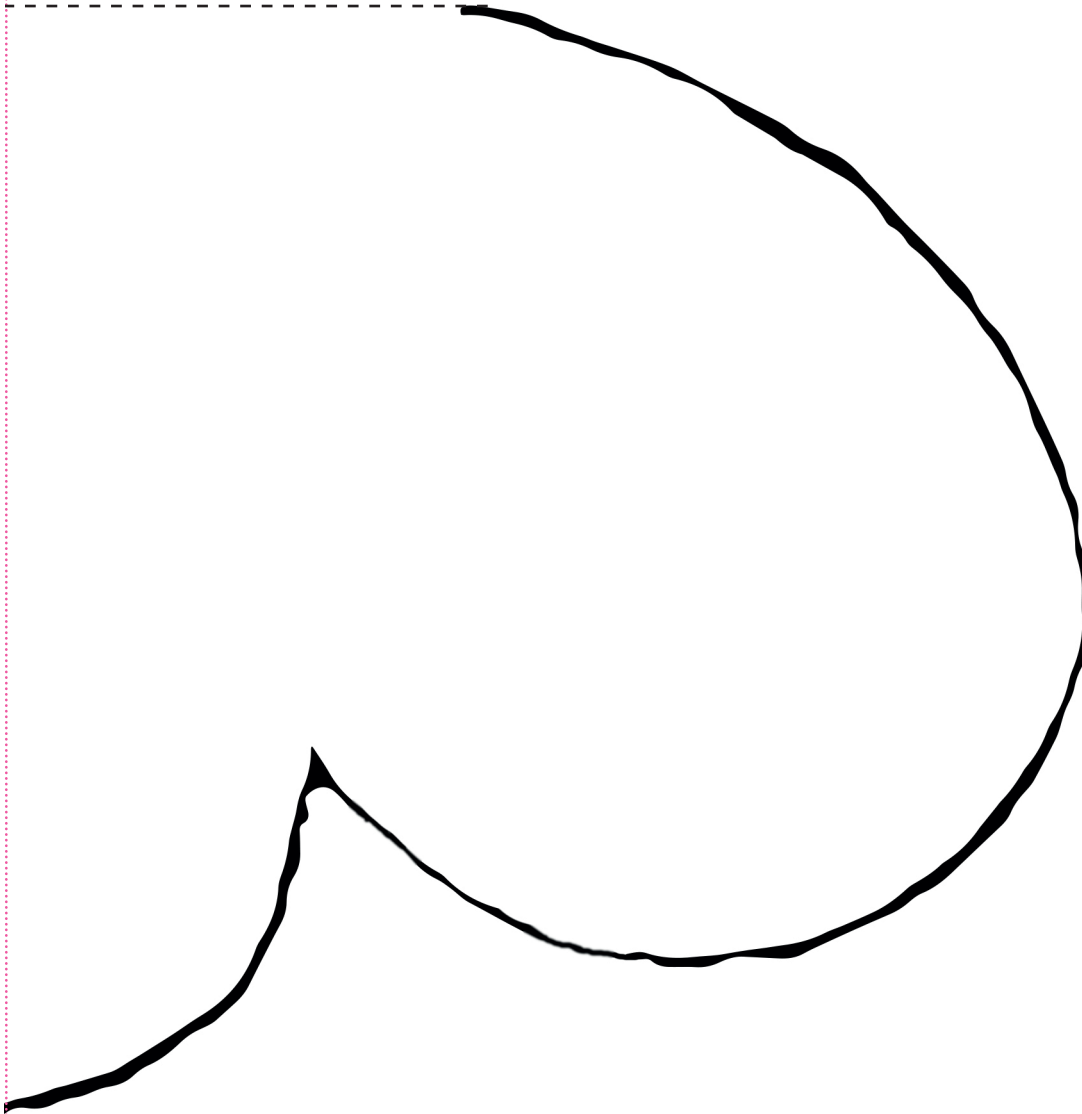


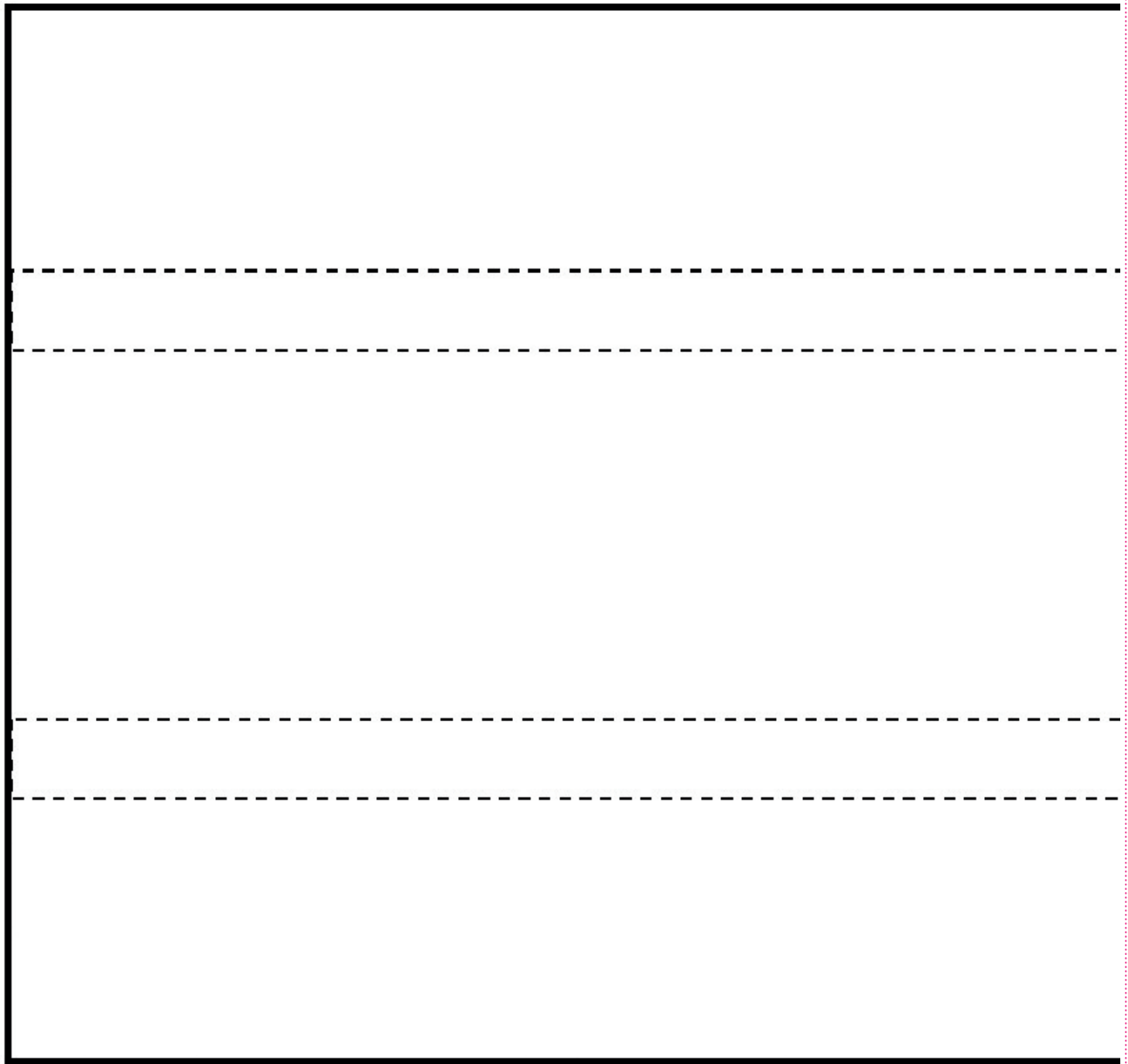
# FLUTTERBY

PAGE 10

ACTUAL SIZE



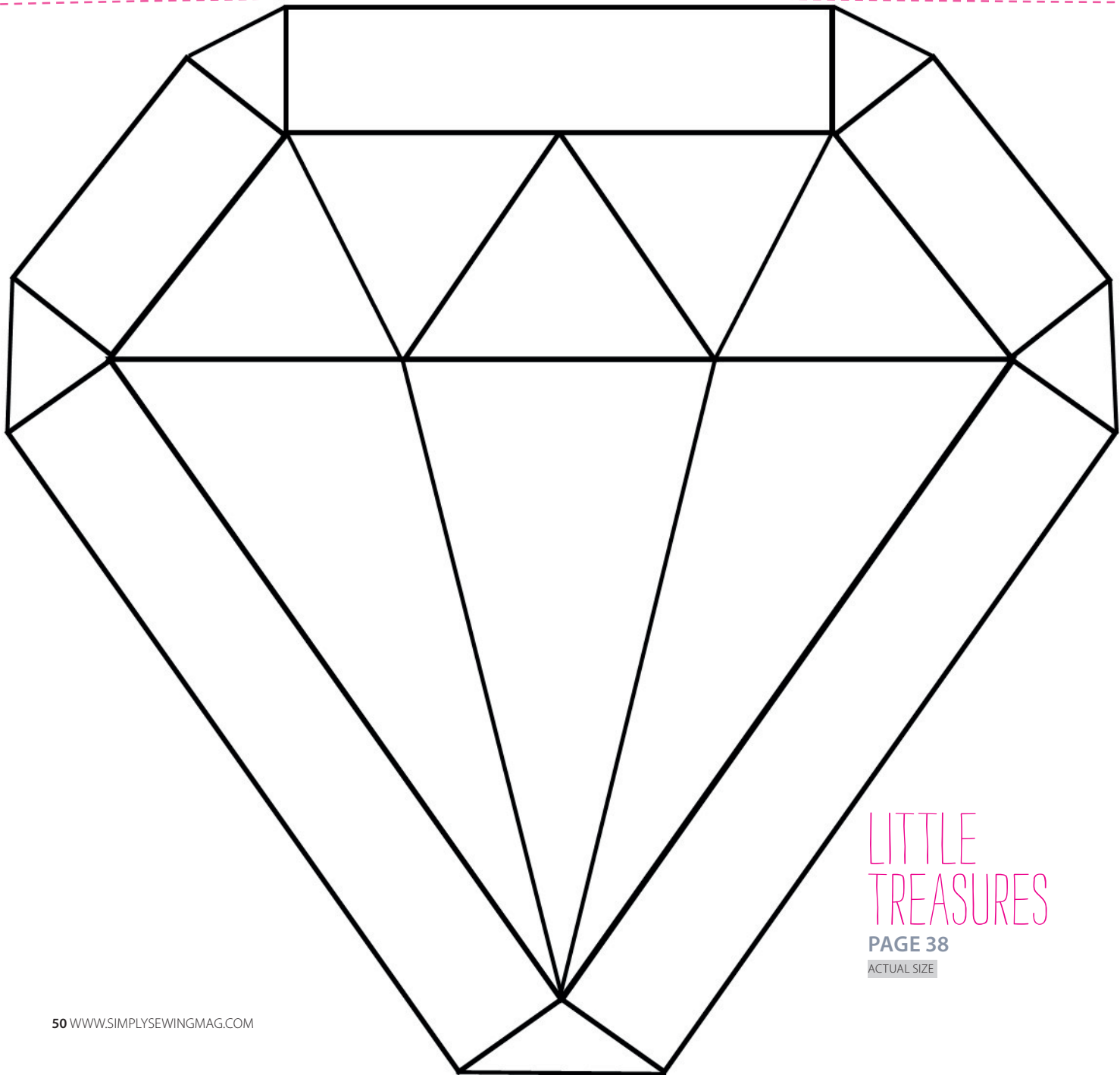




WRAP  
IT UP

PAGE 12

ACTUAL SIZE



LITTLE  
TREASURES

PAGE 38

ACTUAL SIZE



A large black outline of a kite, which is a diamond shape with a vertical line from the top vertex to the bottom vertex and a horizontal line from the left vertex to the right vertex, intersecting at the center.

KITE MOBILE

PAGE 22

ACTUAL SIZE



A large black outline of a heart shape with a pointed bottom and rounded top lobes.

CIRCLE OF LOVE

PAGE 18

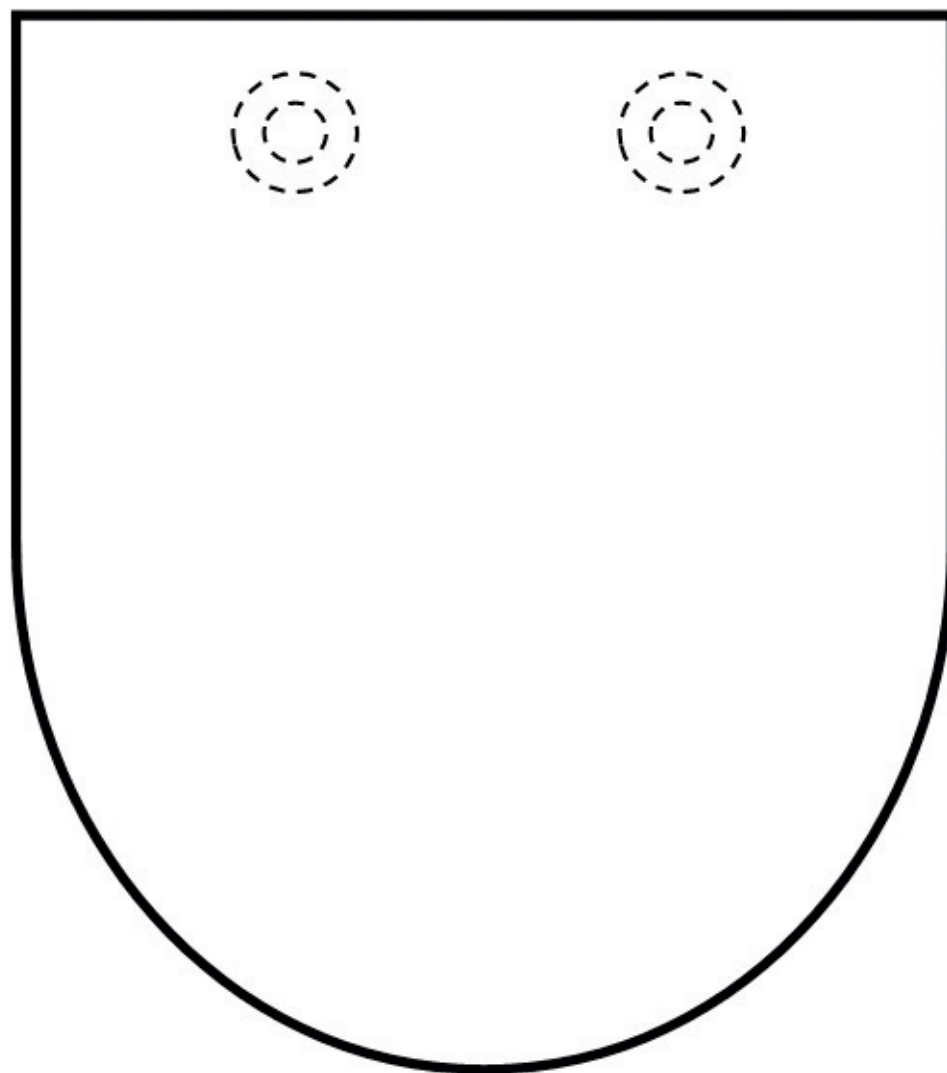
ACTUAL SIZE



GRAB  
BAG

PAGE 14

ACTUAL SIZE

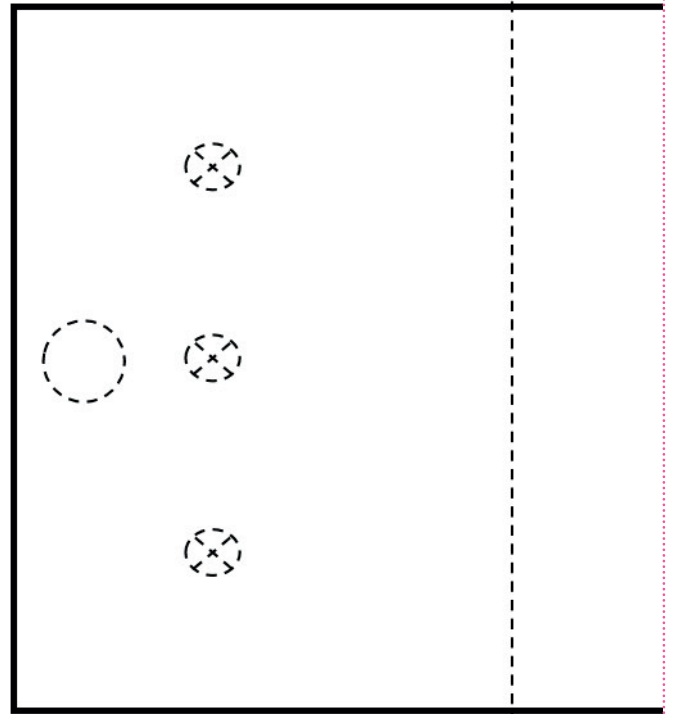


GRAB  
BAG

PAGE 14

ACTUAL SIZE

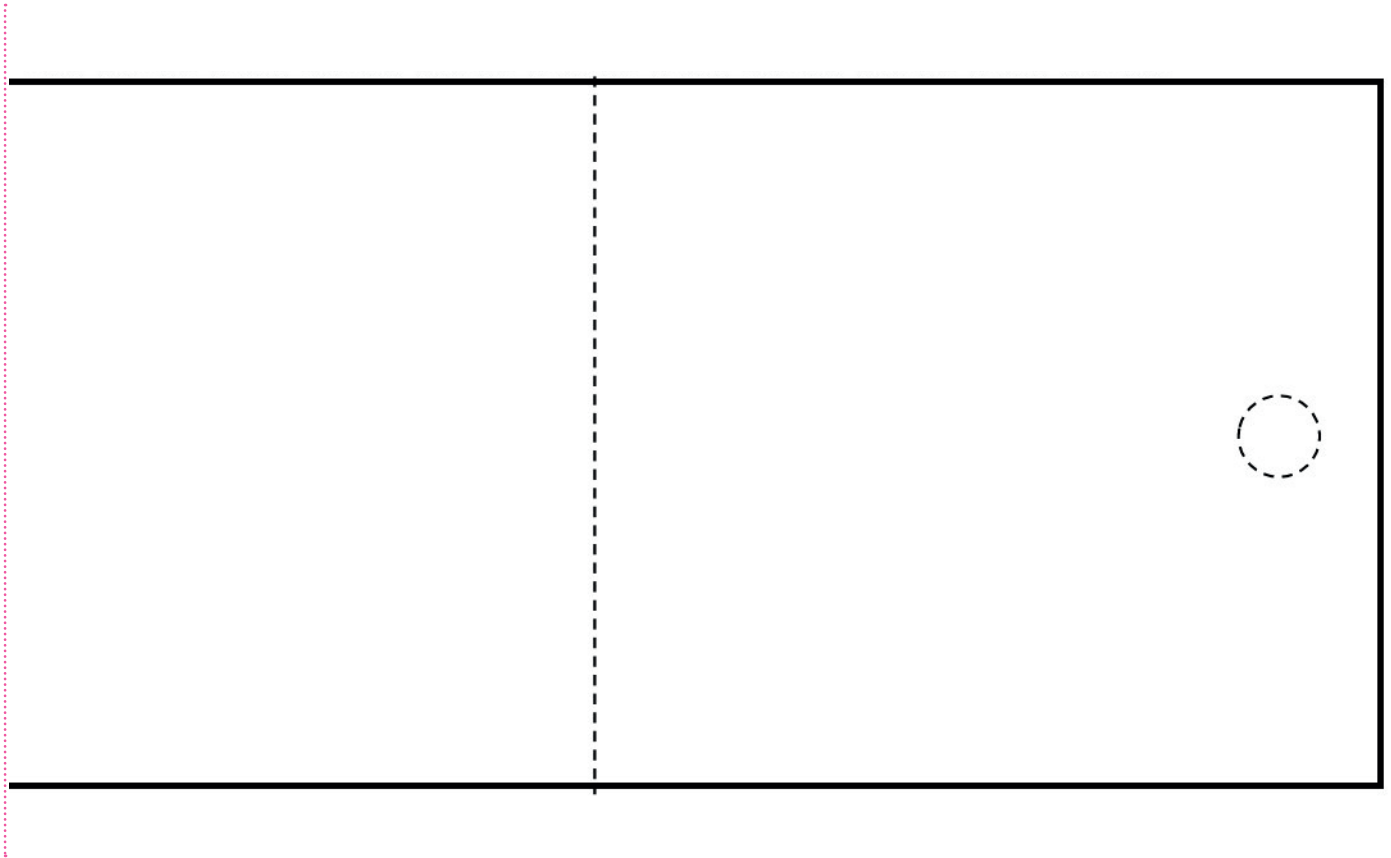




# BLING BOOK

PAGE 20

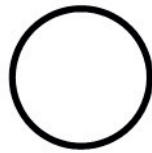
ACTUAL SIZE



# BREEZY DAY

PAGE 30

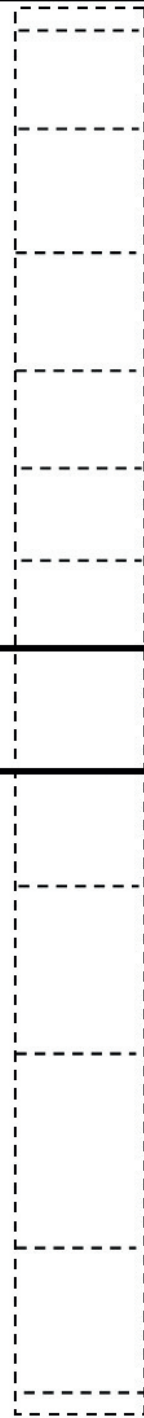
ACTUAL SIZE



SEW  
BEAUTIFUL

PAGE 34

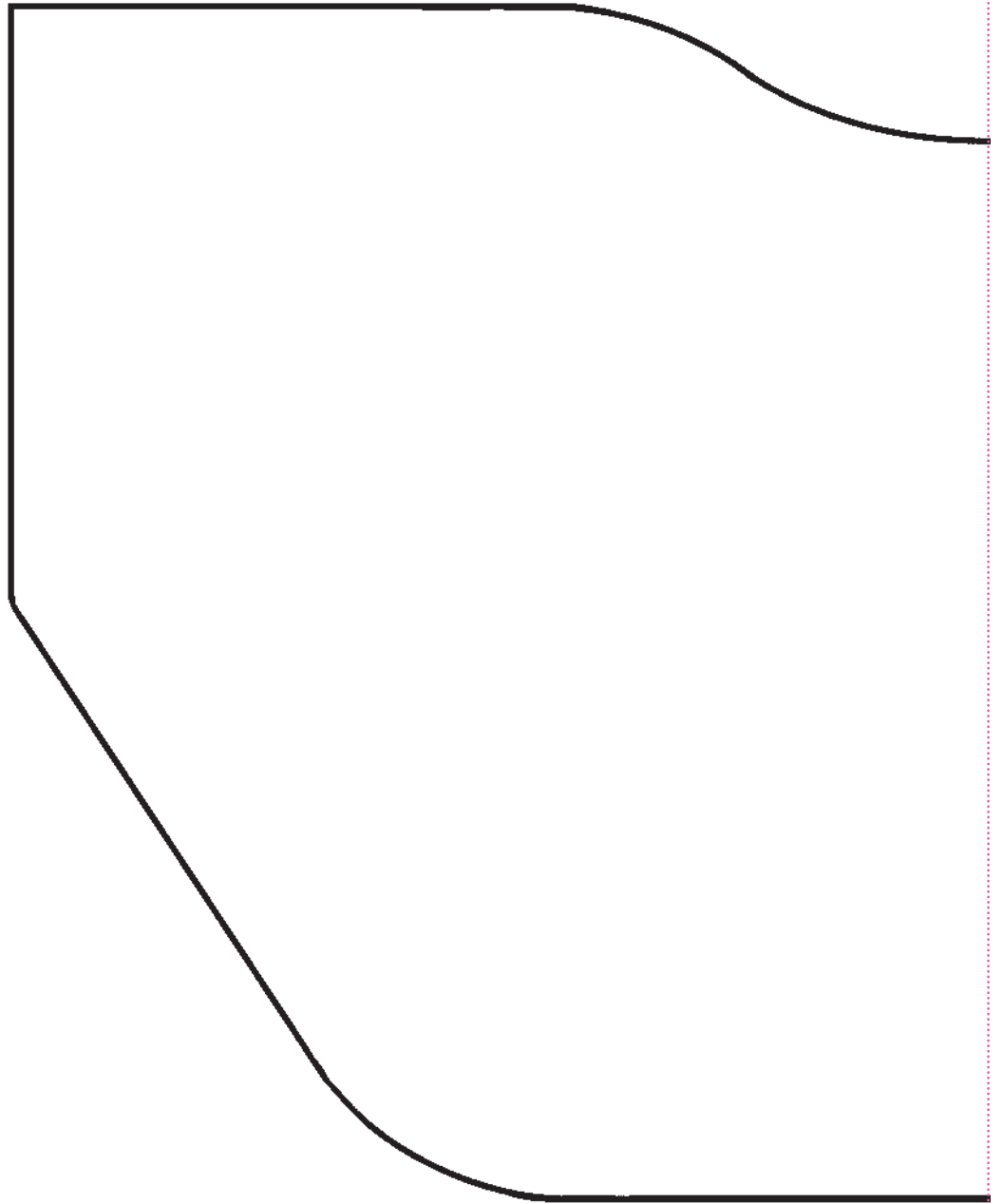
ACTUAL SIZE



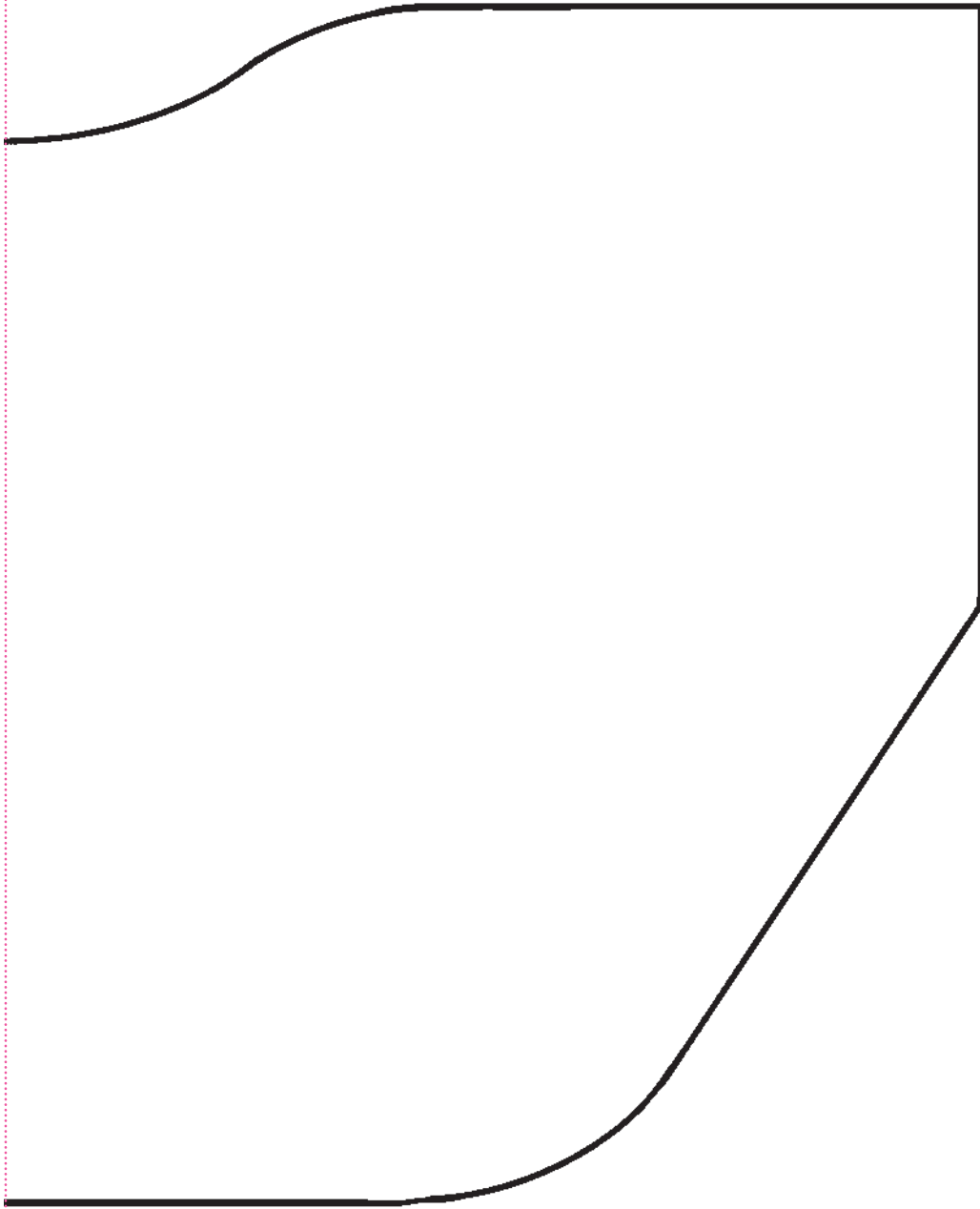
# PUCKER UP

PAGE 24

COPY AT 150%



# TEMPLATES

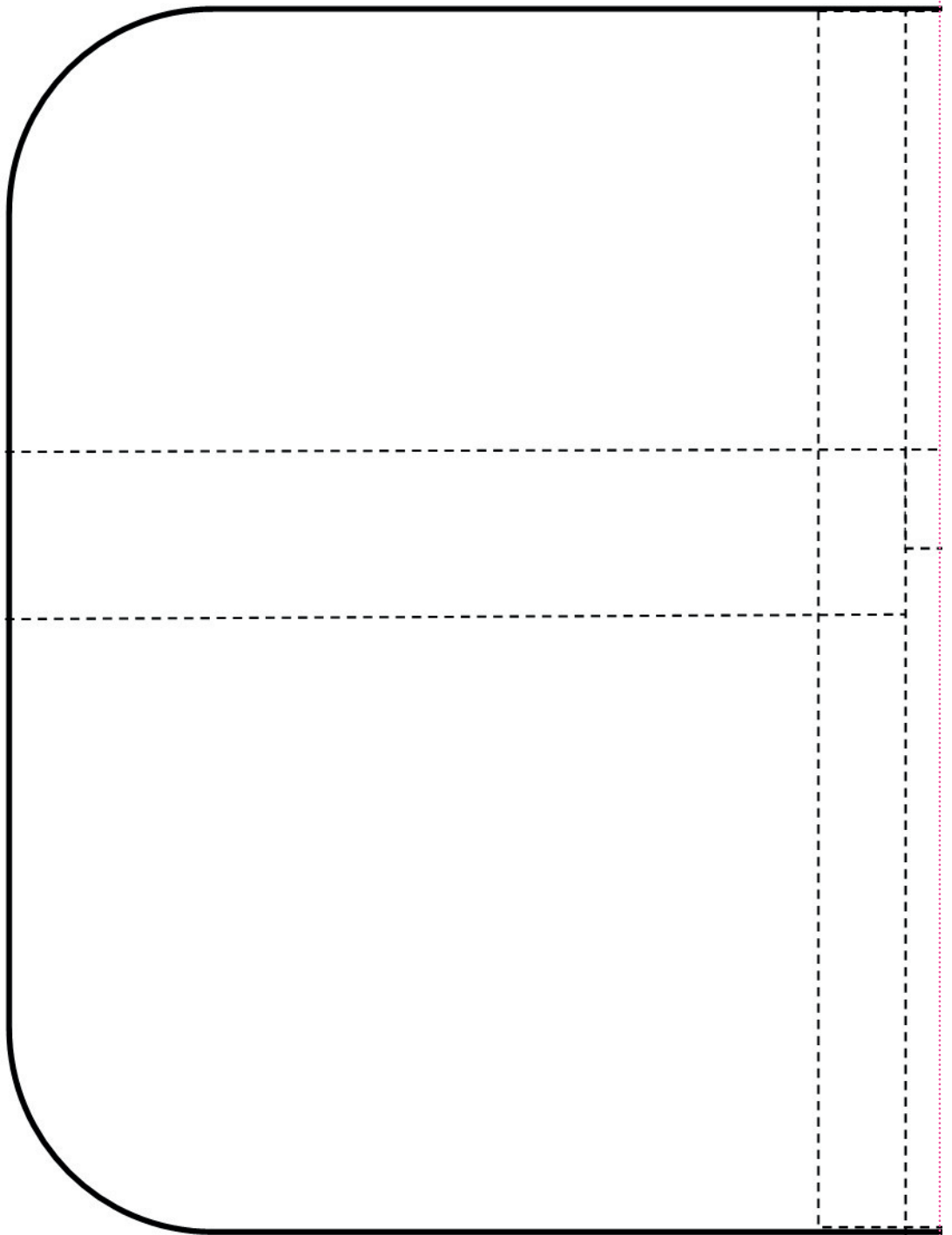


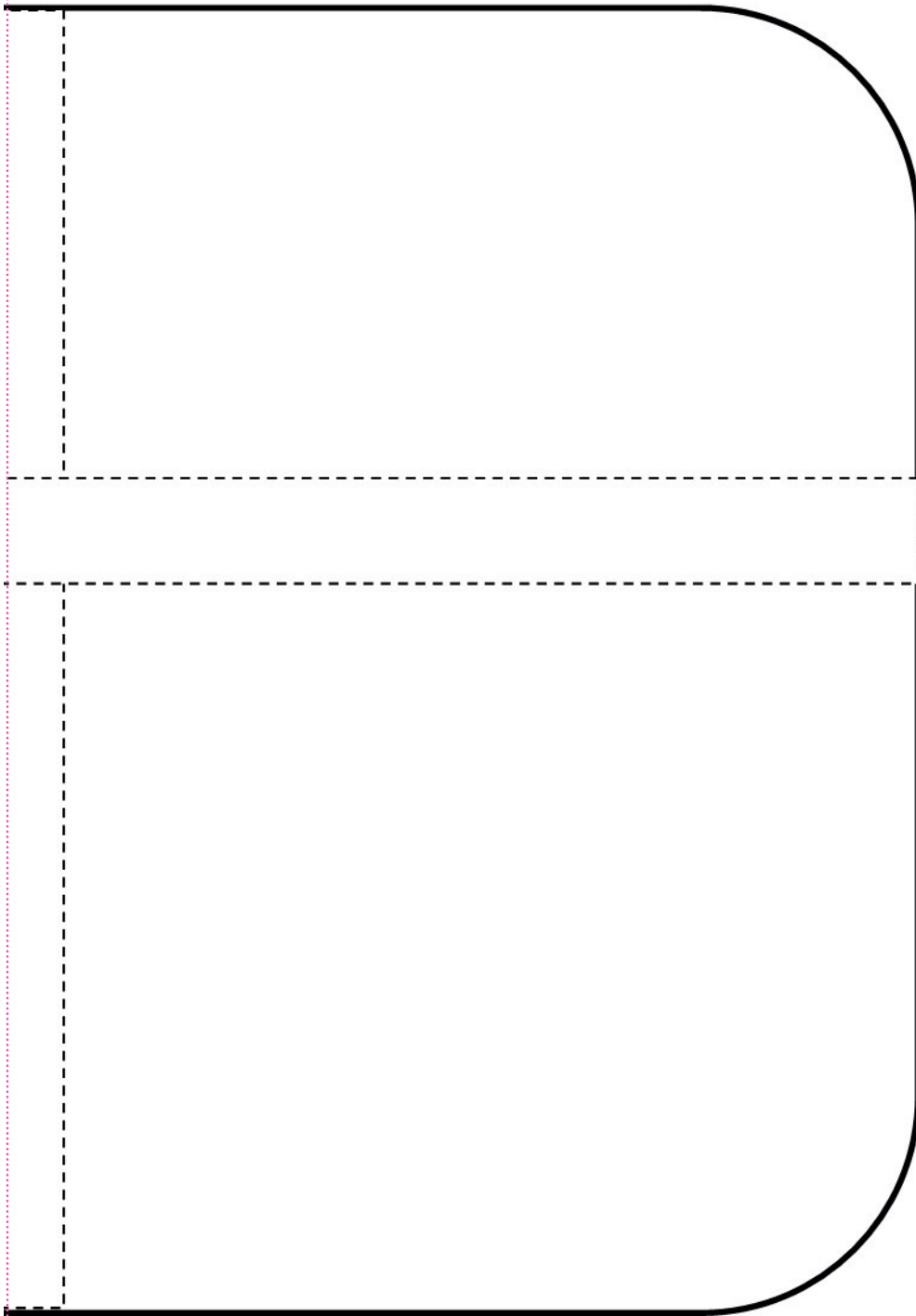


# BACK TO SCHOOL

PAGE 26

ACTUAL SIZE



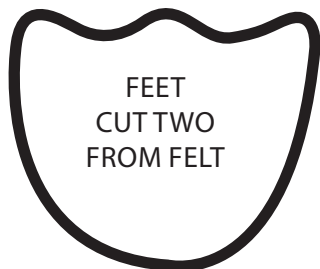


# PENGUIN PARADE

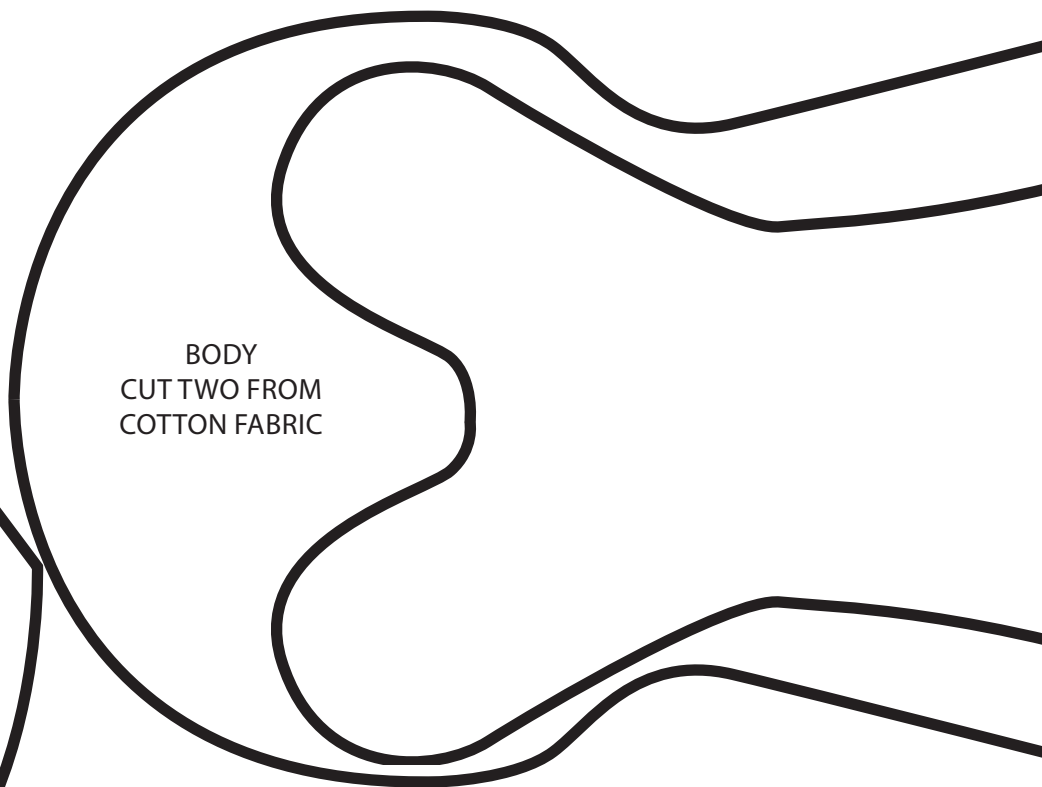
PAGE 28

ACTUAL SIZE

BEAK



FEET  
CUT TWO  
FROM FELT

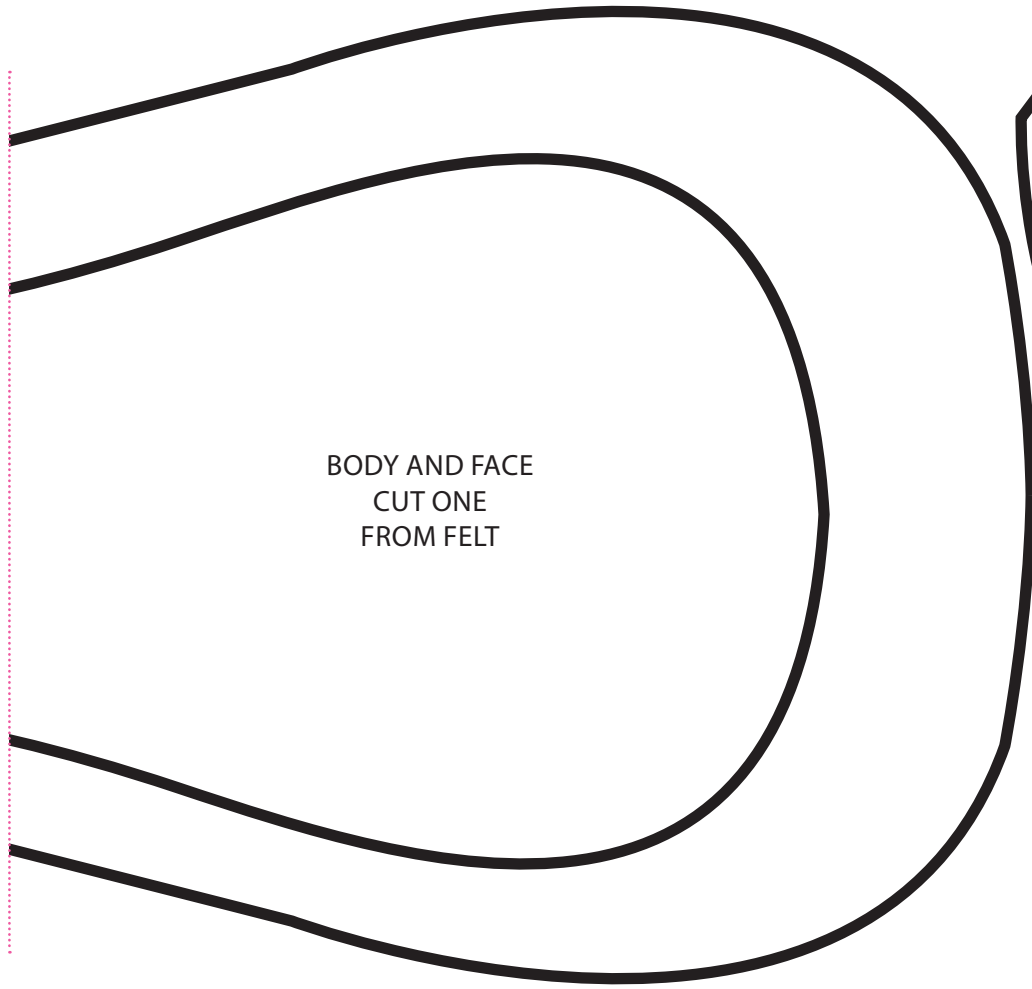


BODY  
CUT TWO FROM  
COTTON FABRIC

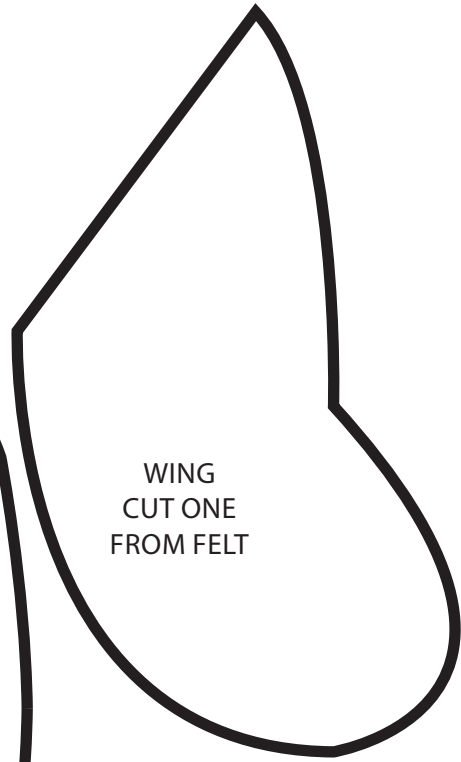


WING  
CUT ONE  
FROM FELT

# TEMPLATES



BODY AND FACE  
CUT ONE  
FROM FELT

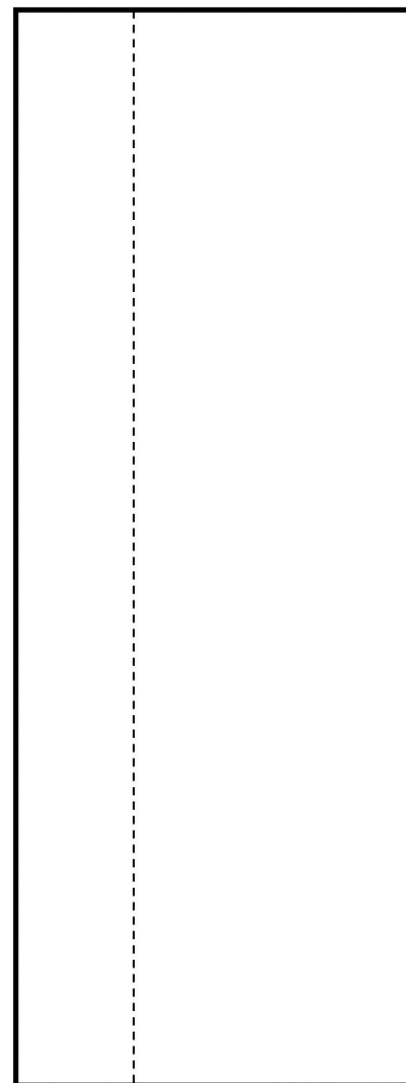


WING  
CUT ONE  
FROM FELT

# BRIGHT STAR

PAGE 40

ACTUAL SIZE



SPELL IT OUT

PAGE 42

COPY AT 150%

