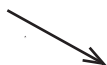


TEMPLATES

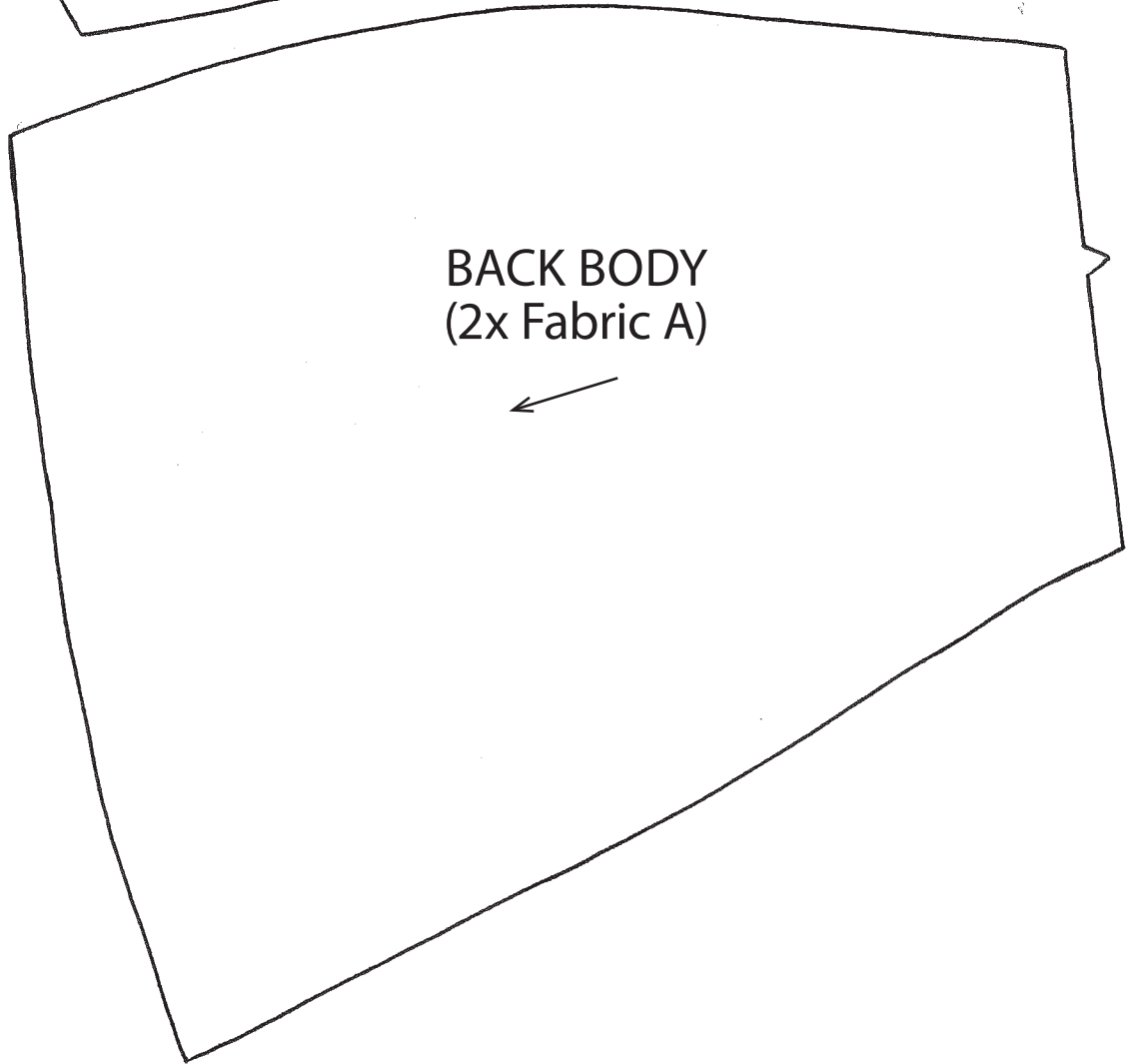
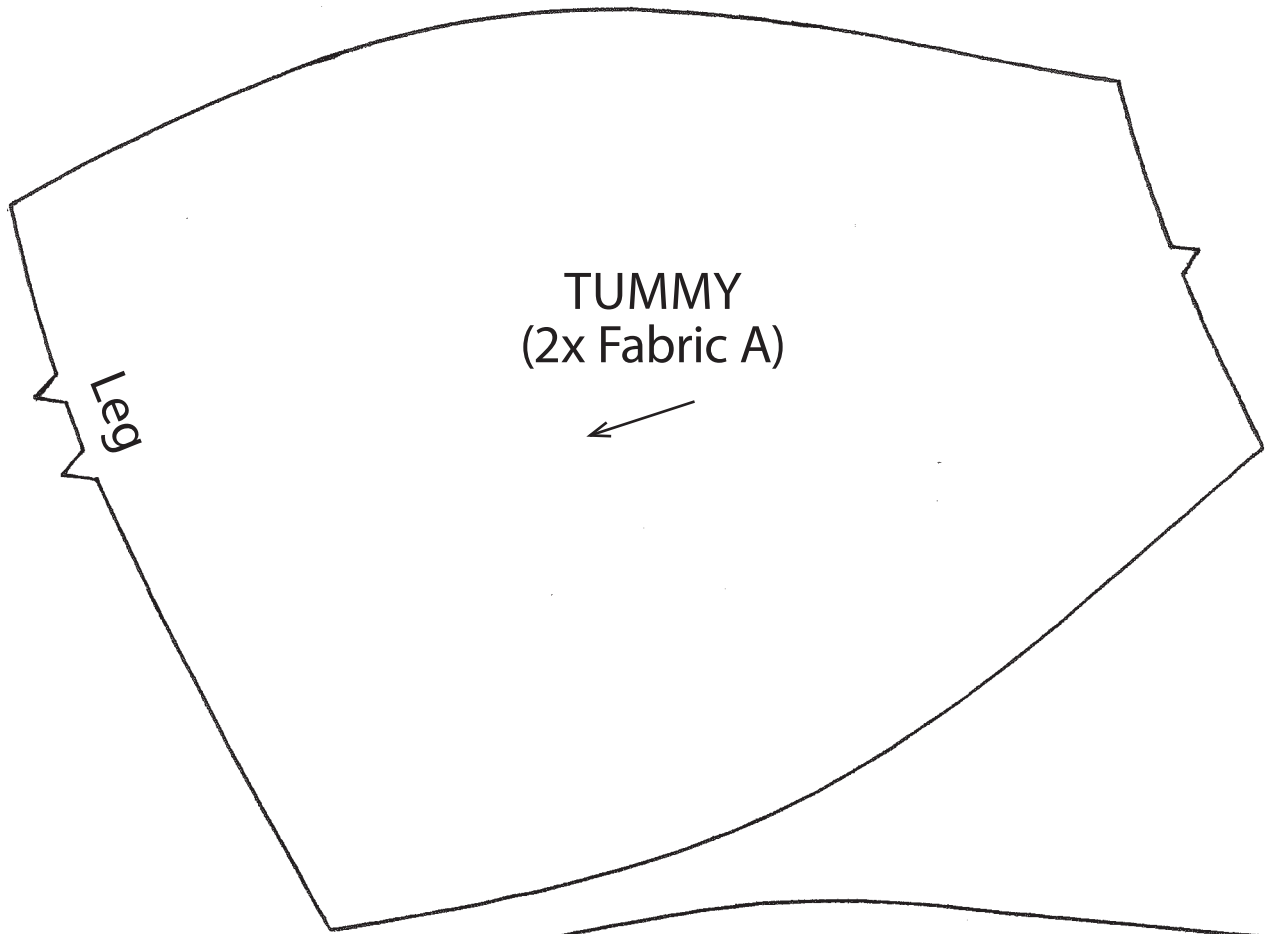
Here are the templates you will need to make some of the projects in *Simply Sewing* issue 40.

CHICK TOY

BASE
(1x Fabric A)



TEST SQUARE
10x10cm



CHICK TOY

BACK HEAD
(2x Fabric A)



LEG
(2x Fabric B)



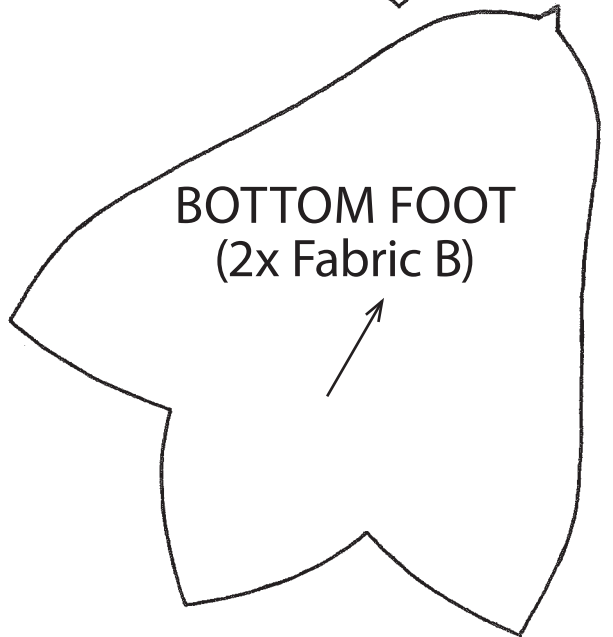
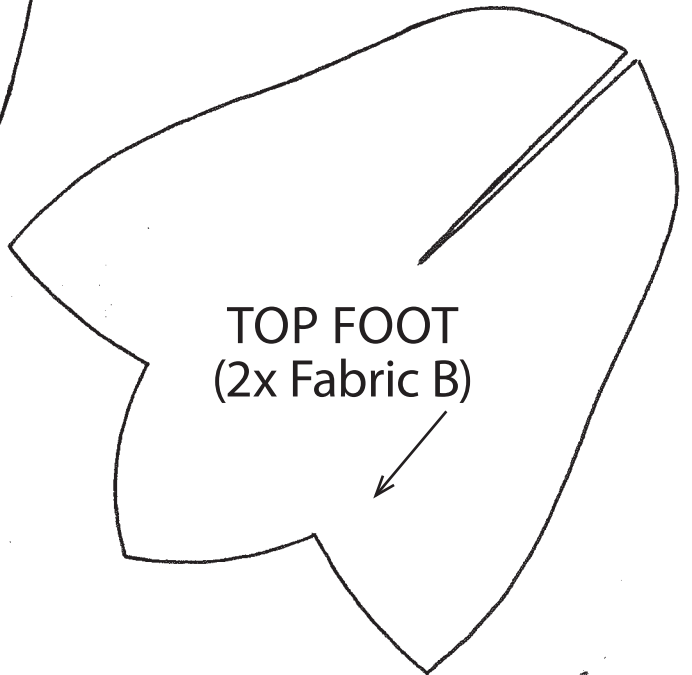
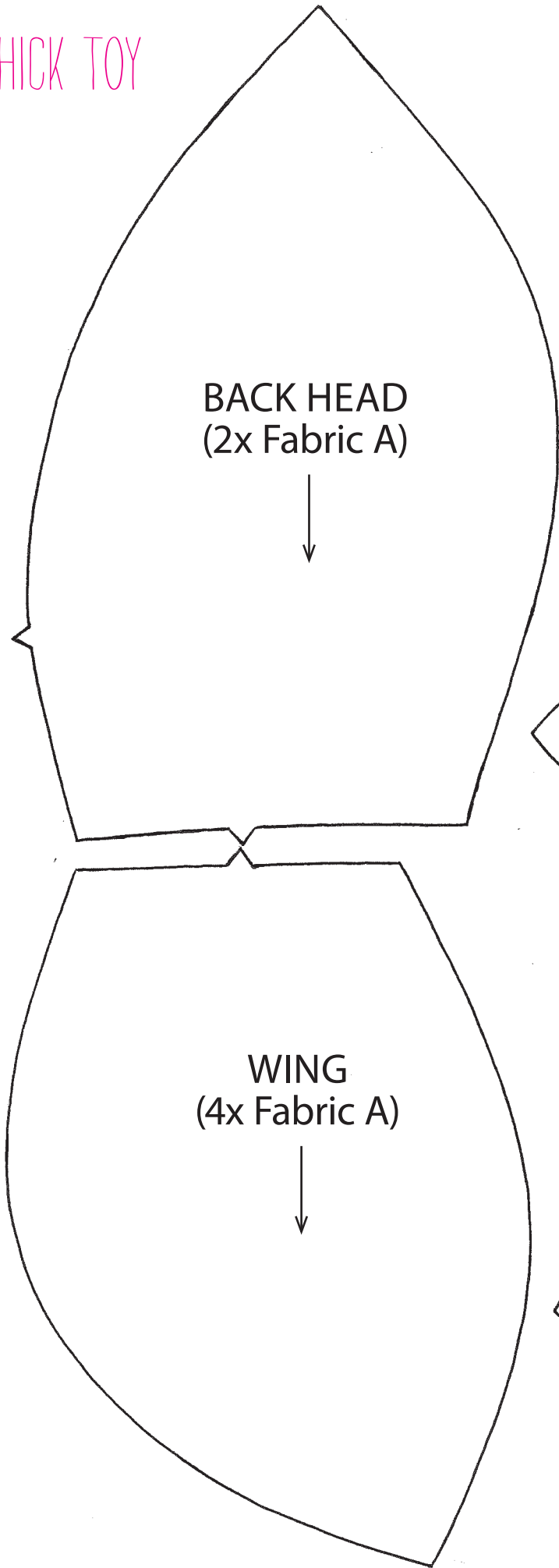
TOP FOOT
(2x Fabric B)

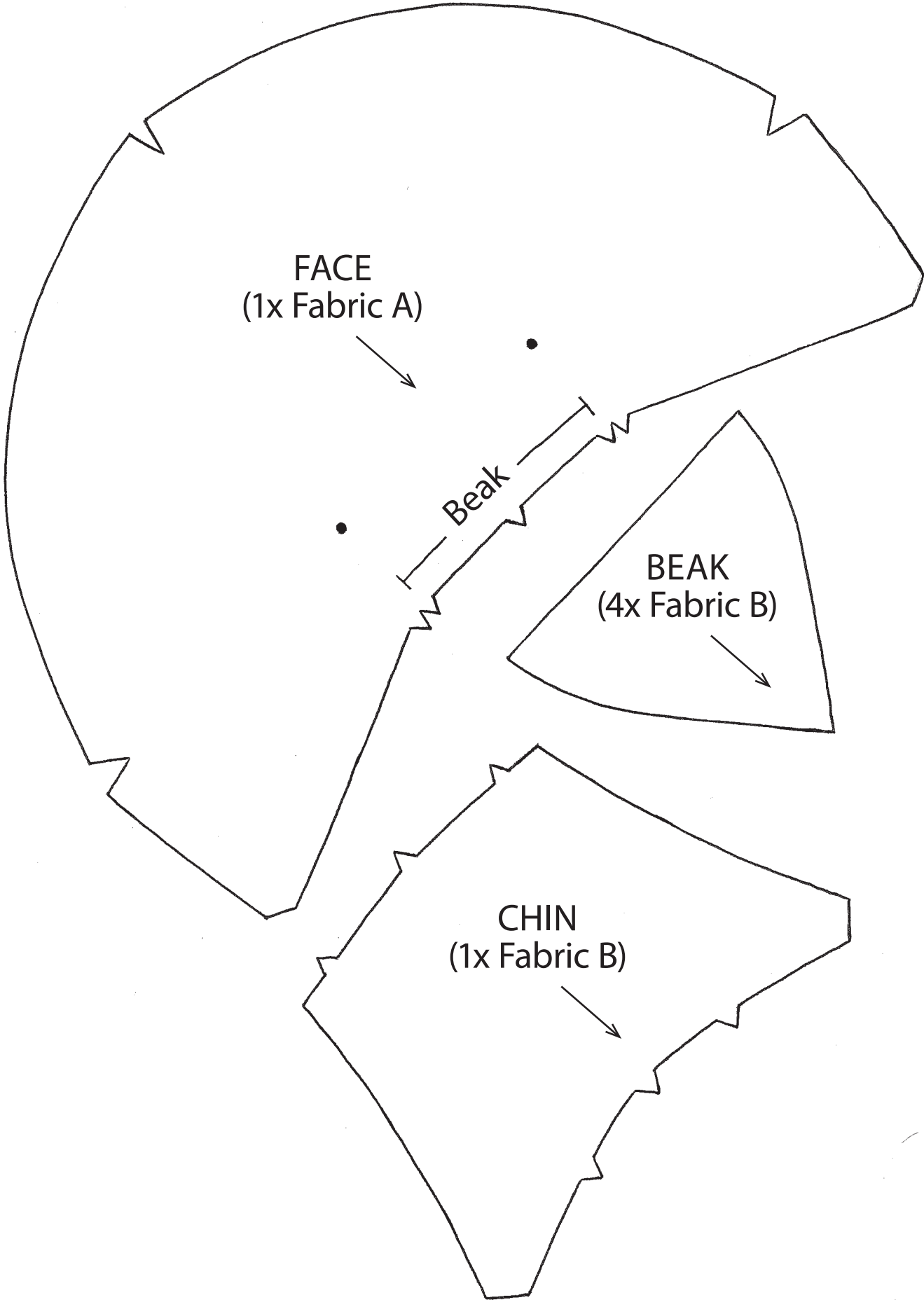


WING
(4x Fabric A)



BOTTOM FOOT
(2x Fabric B)





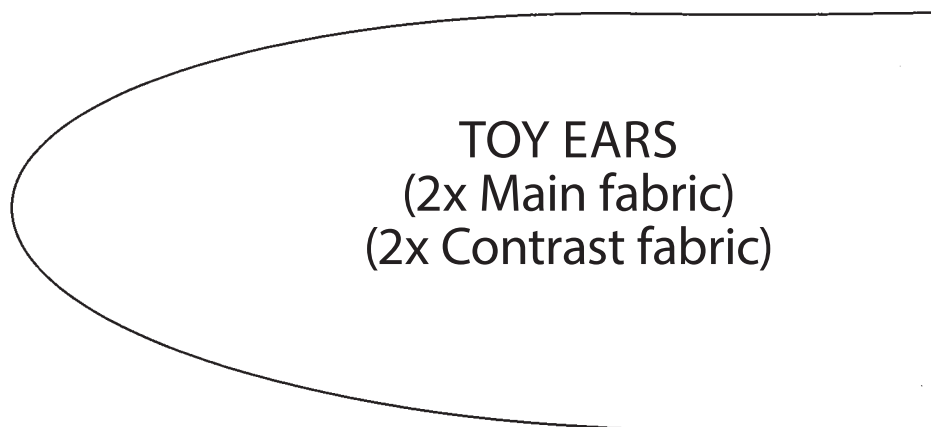
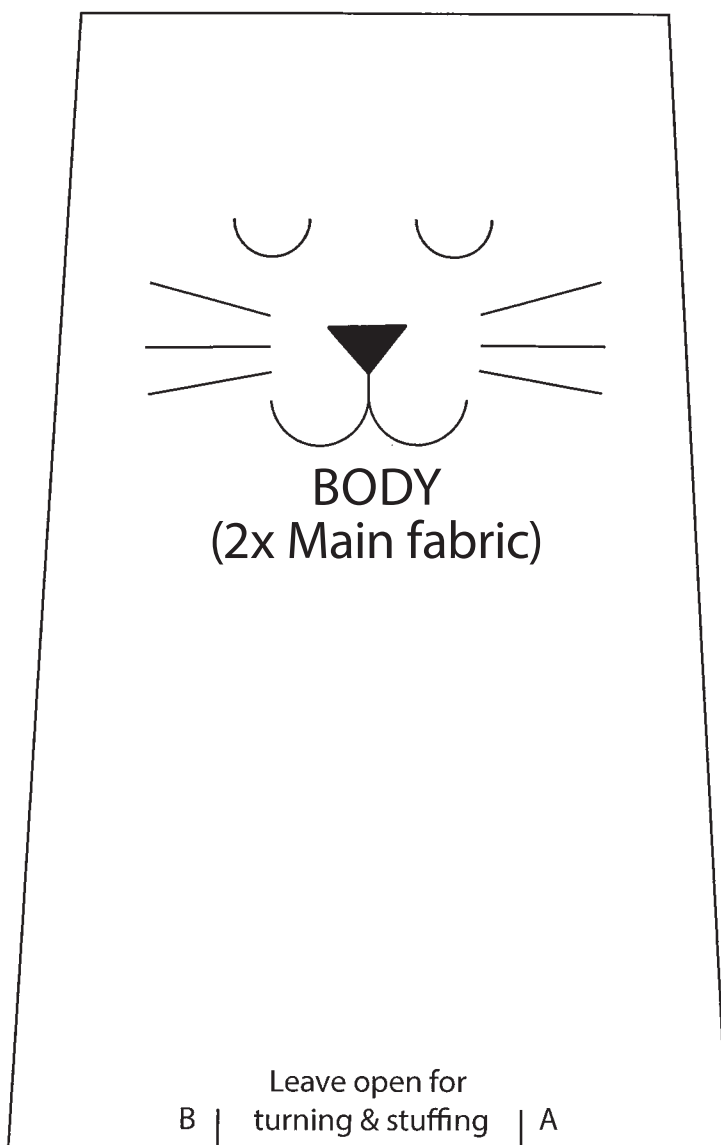
FACE
(1x Fabric A)

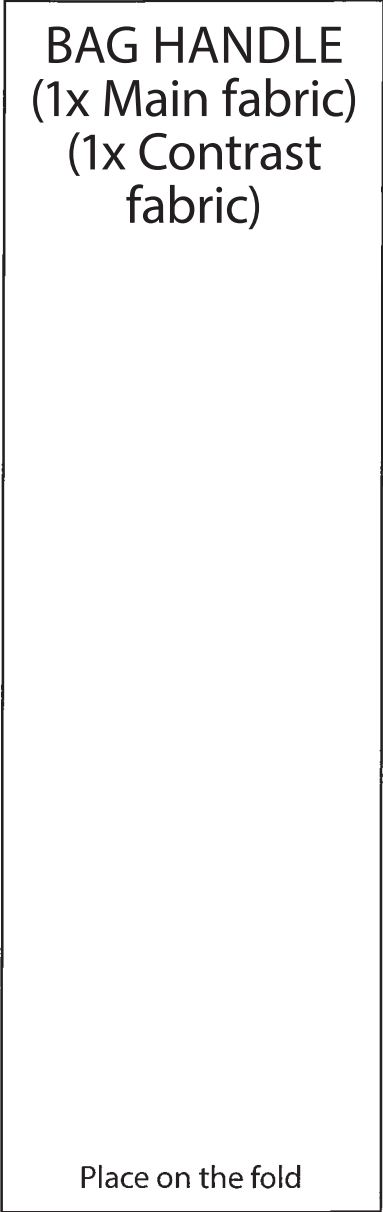
Beak

BEAK
(4x Fabric B)

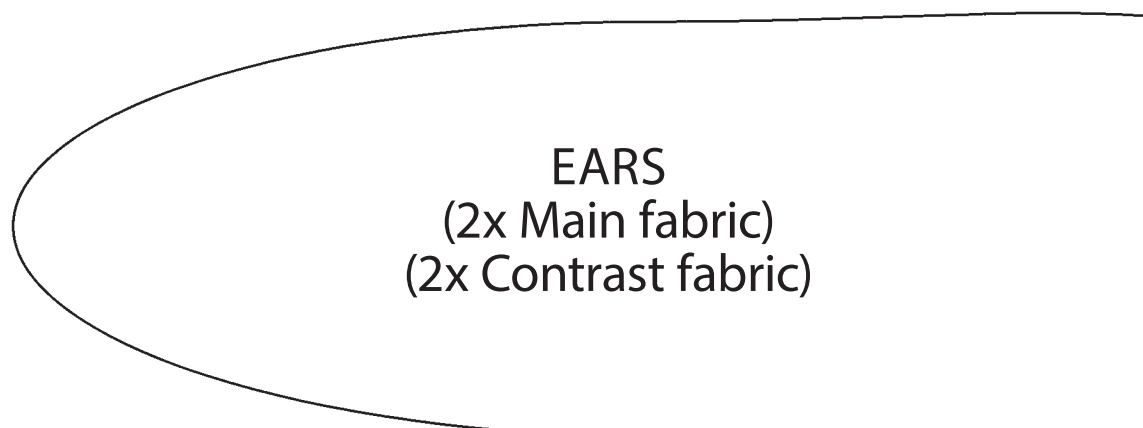
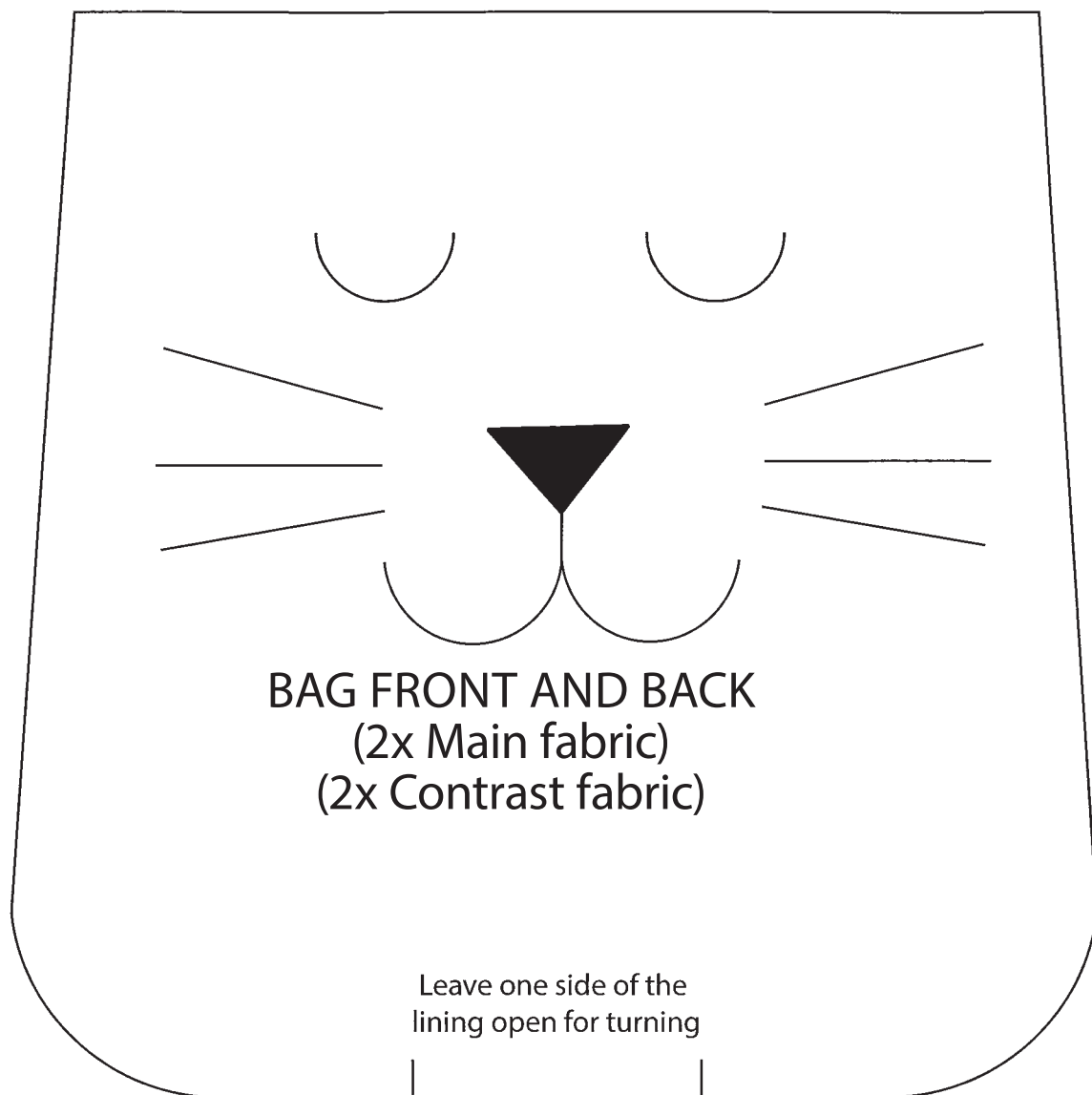
CHIN
(1x Fabric B)

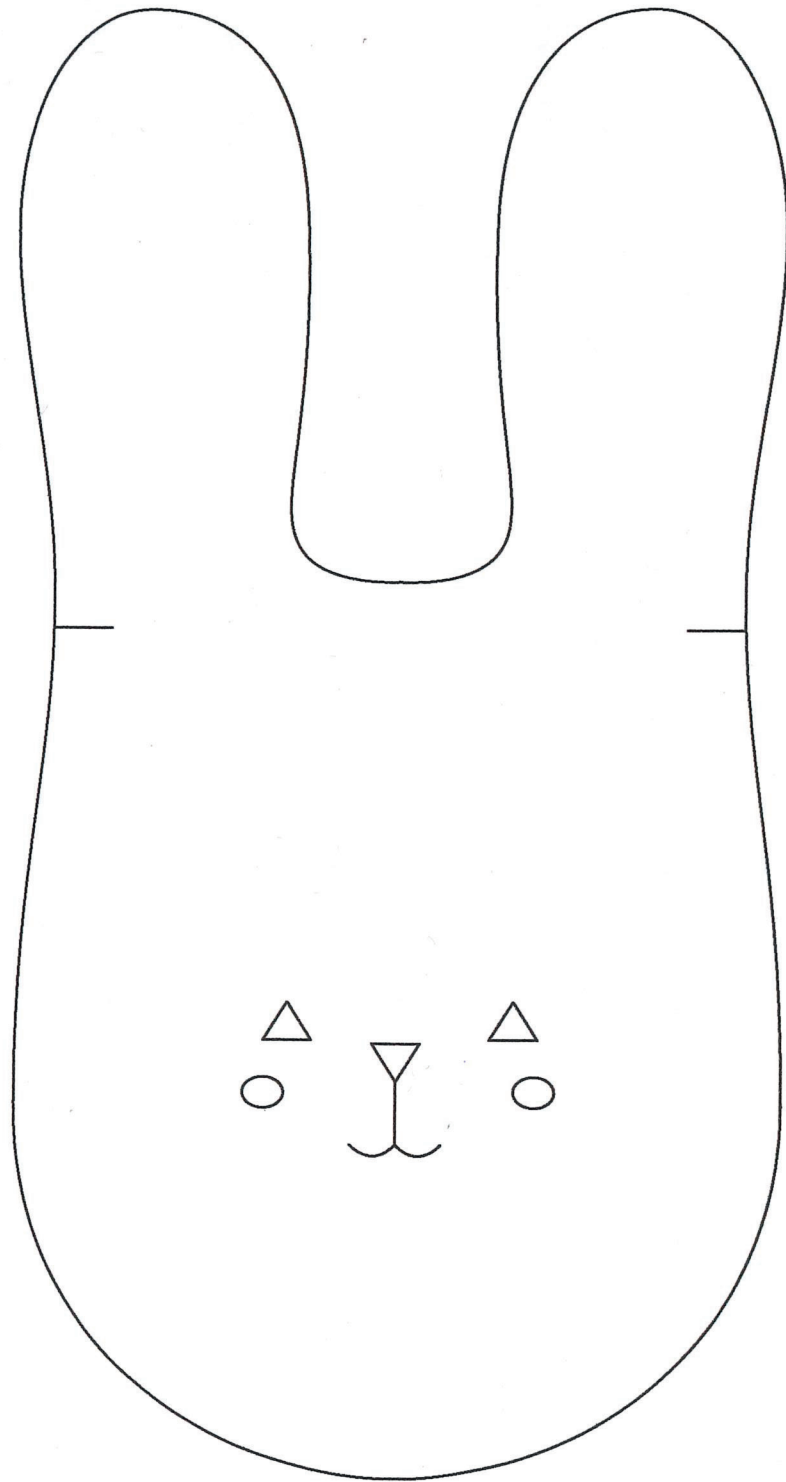
BUNNY SET





BUNNY SET

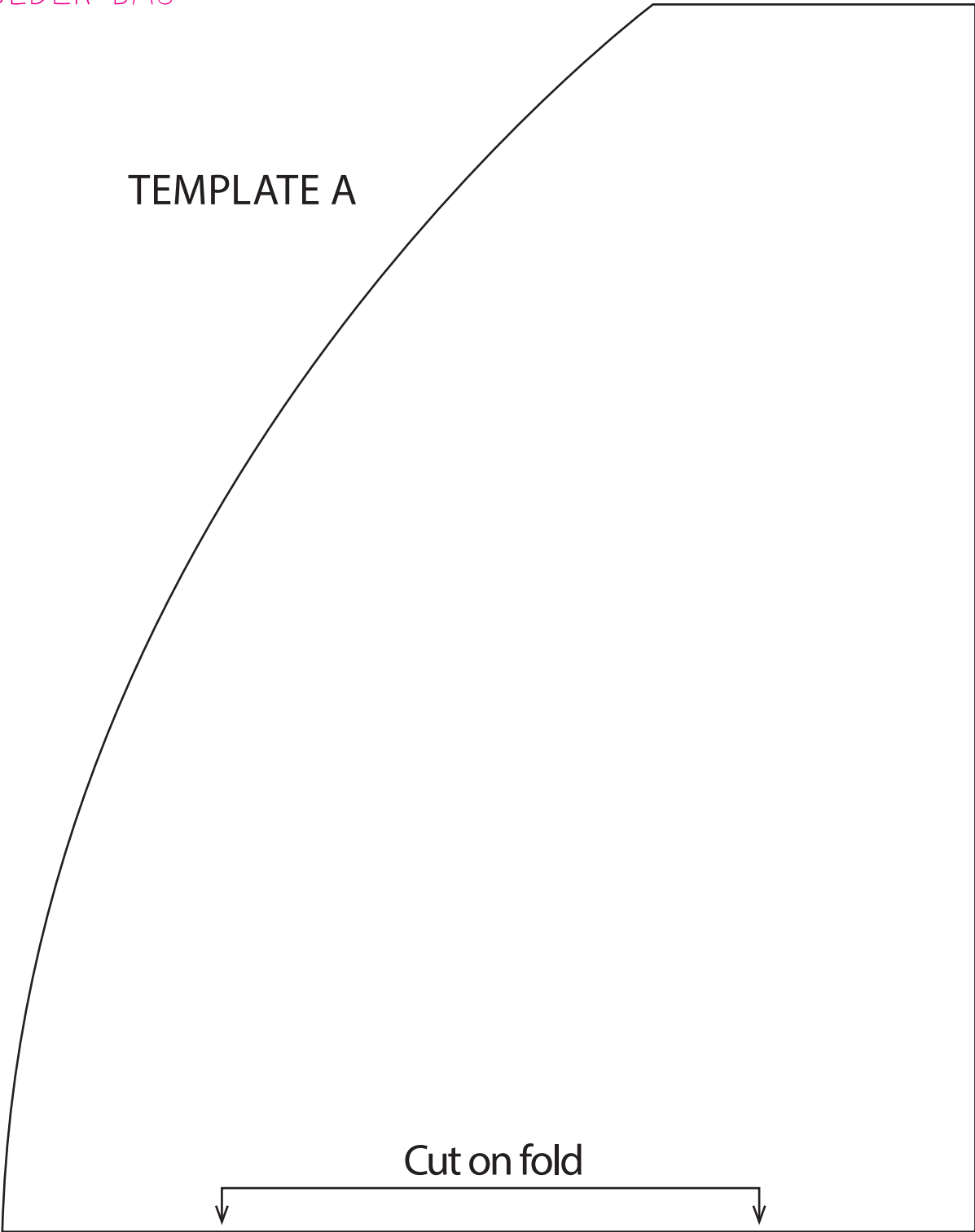




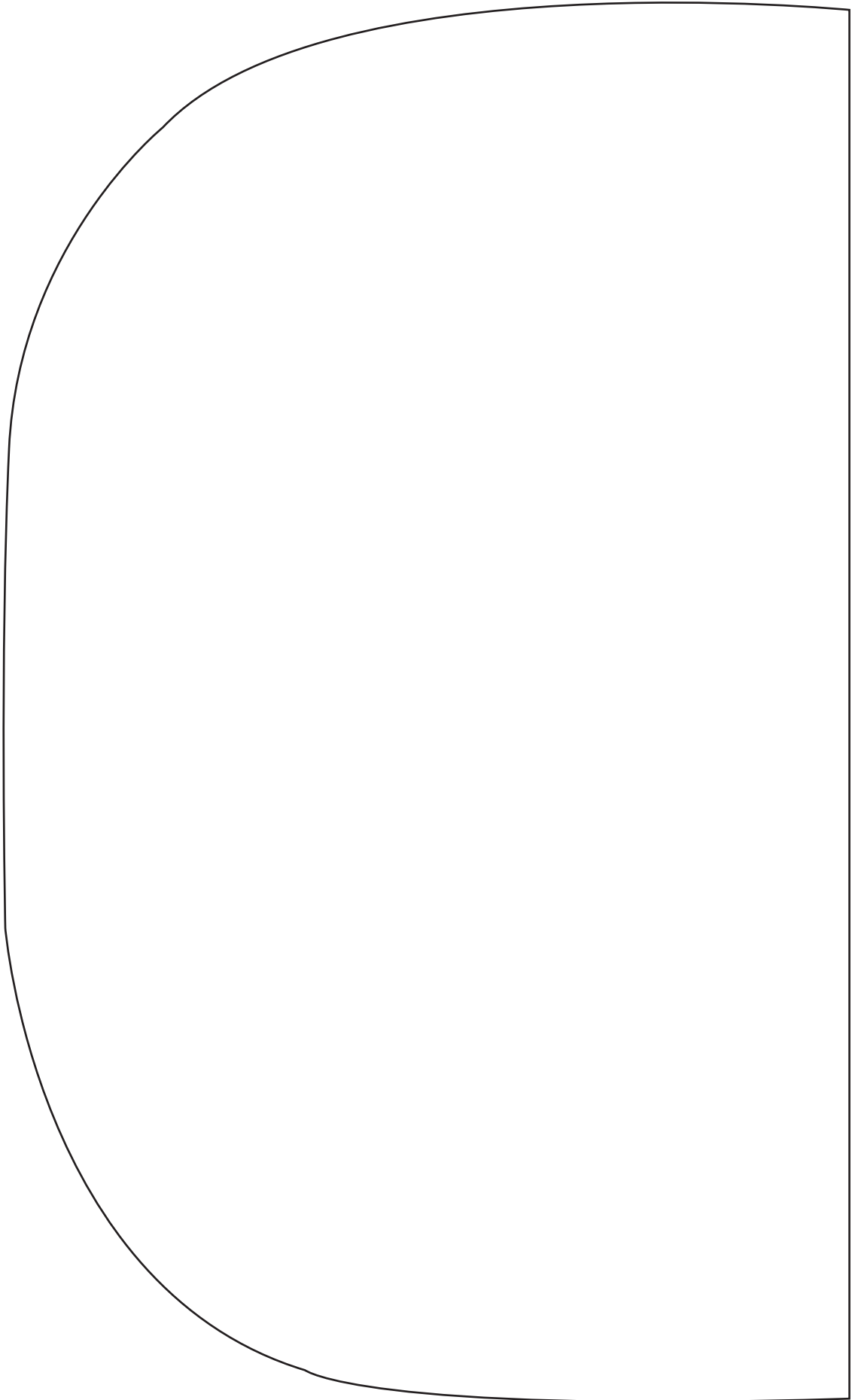
DANISH KNOT

SHOULDER BAG

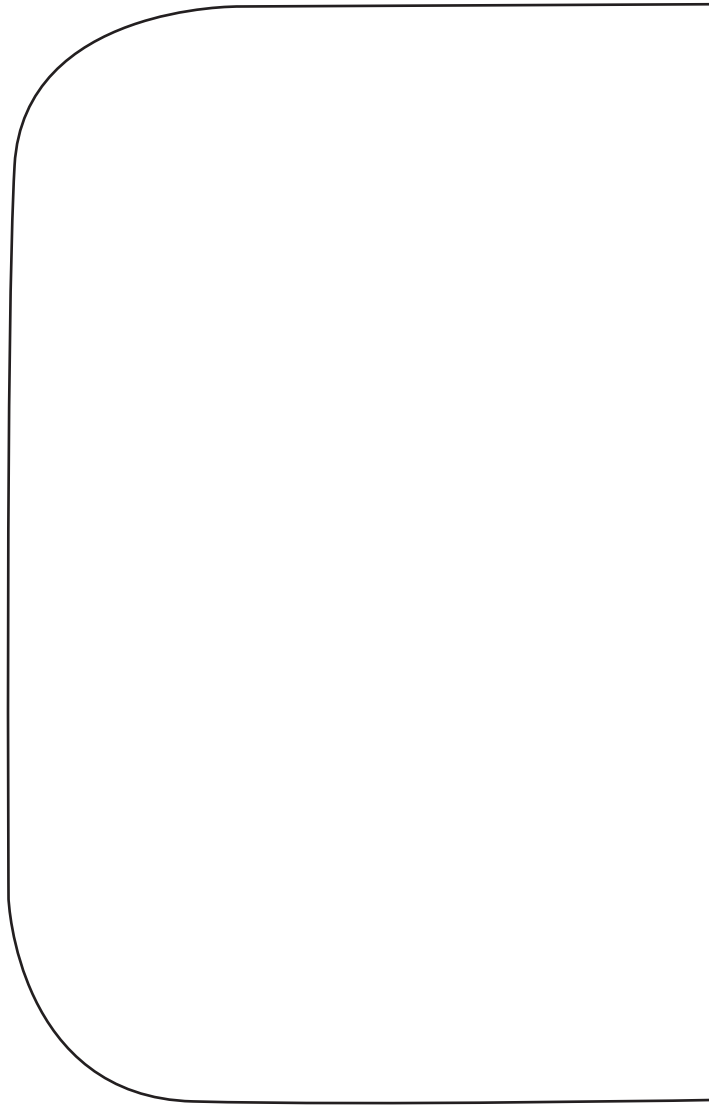
TEMPLATE A



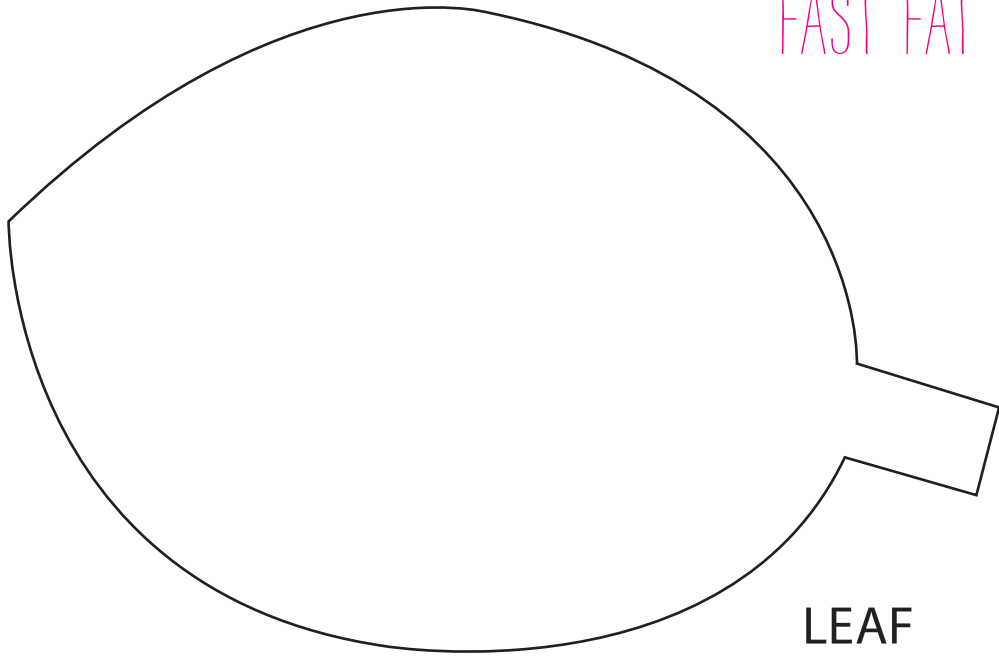
TEMPLATE C



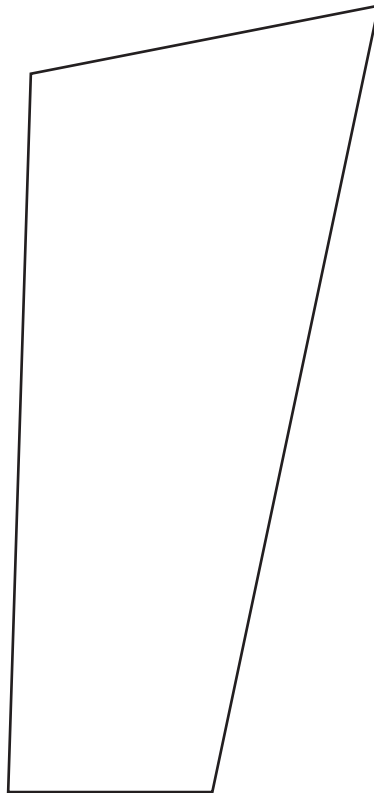
TEMPLATE B



FAST FAT QUARTER

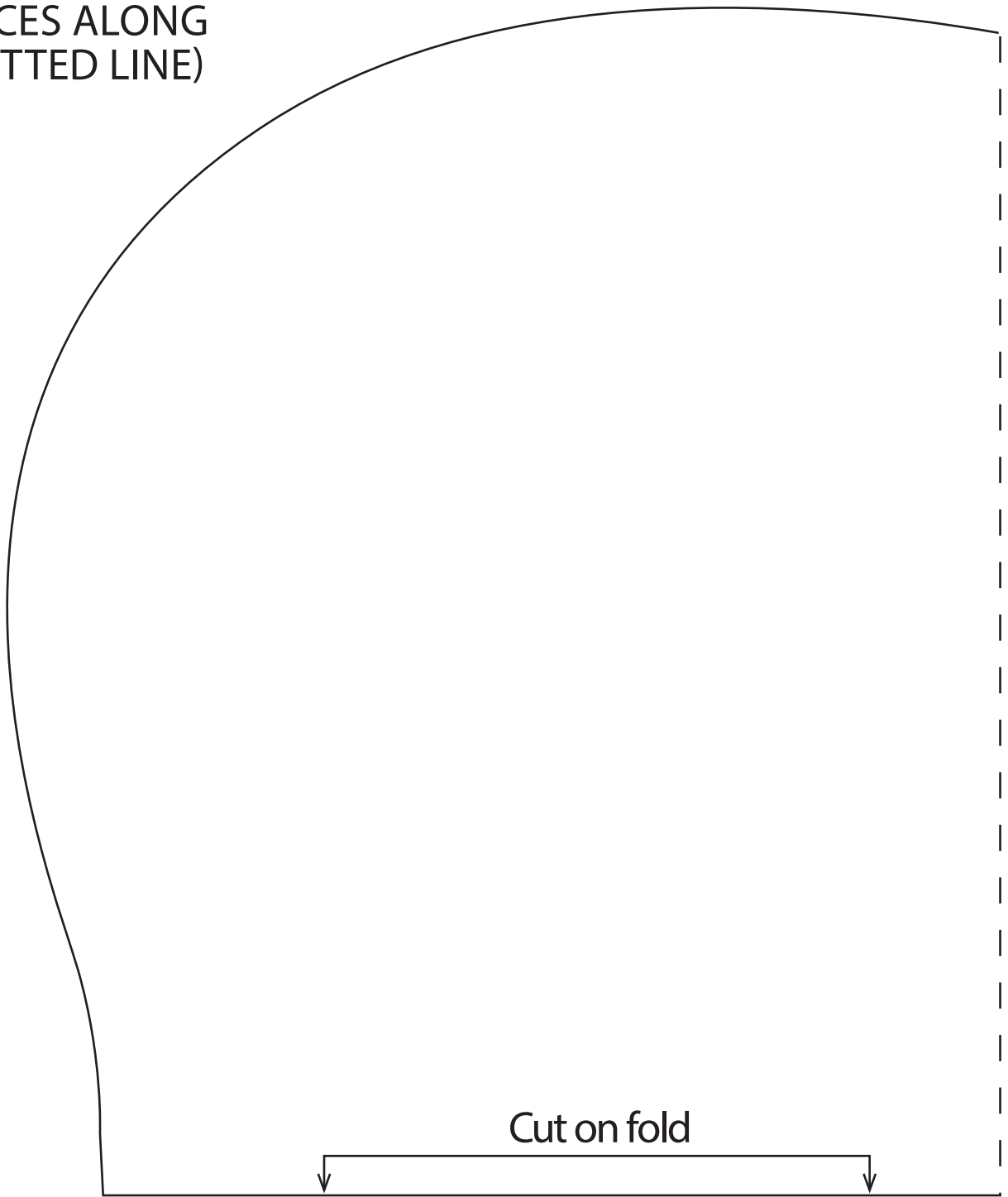


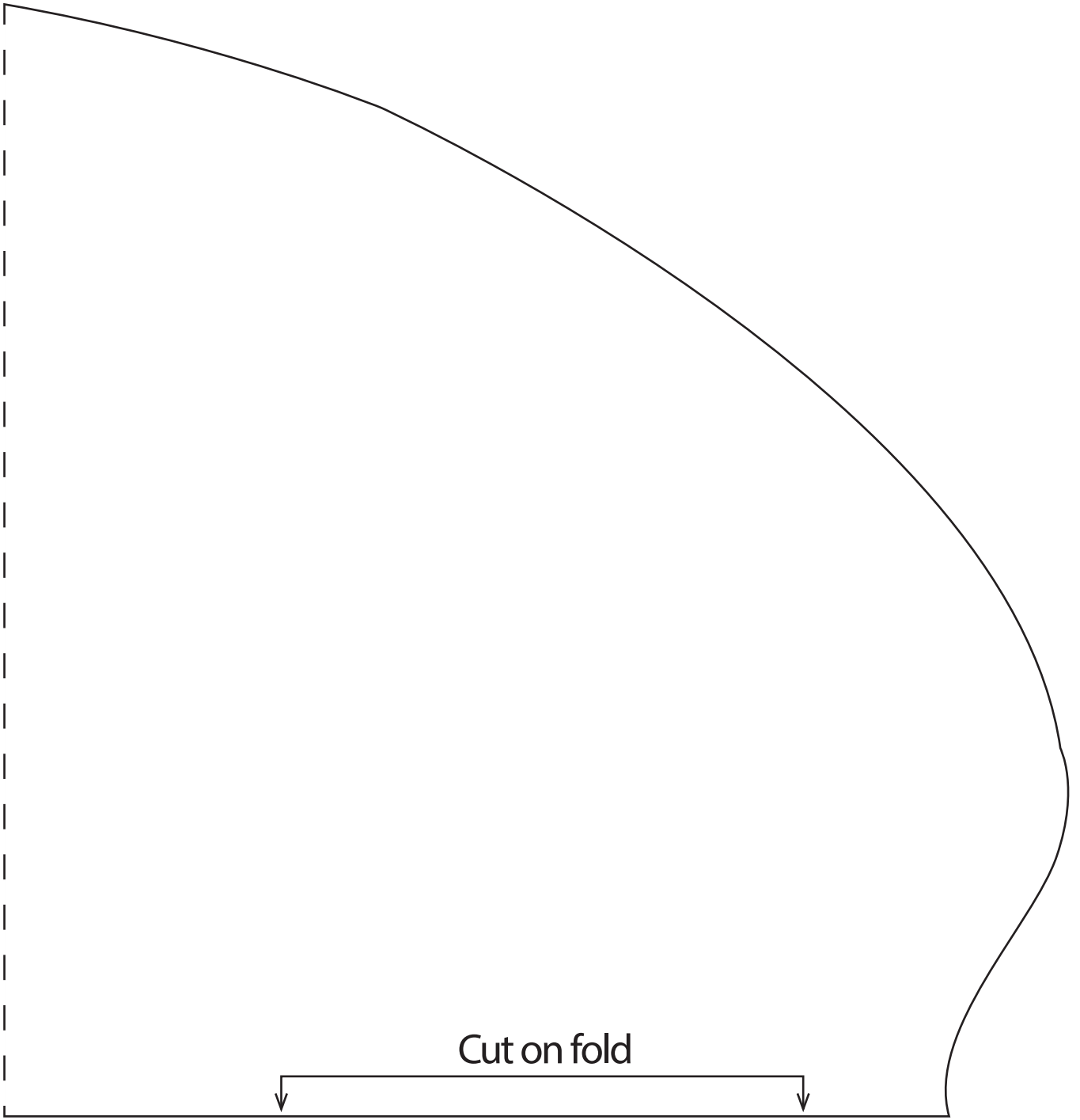
STALK



FAST FAT QUARTER

APPLE (JOIN
PIECES ALONG
DOTTED LINE)





Cut on fold