



Exclusive

*Rosee Woodland*  
**Christmas Set**

These lovely decorations are  
just the thing for adding a traditional  
touch to your tree this Christmas

# Christmas Set

**THESE CHARMING** decorations are quick to make and will add a cheerful touch to your Christmas tree – why not give a few away to friends and family, too? Rosee has made her set using small amounts of Jamieson & Smith 2ply Jumper Weight wool for a vintage feel, but any 4ply yarn should be fine, so it's a good way to use up odds and ends in your stash basket. The star, snowman and little stocking are all worked in the round, while the heart, present and tree are knitted flat.

## STOCKING

Using dark red yarn cast on 36 sts and join to work in the round, being careful not to twist, and place marker.

**Rnd 1:** K2, P2 to end.

Change to oatmeal yarn.

**Rnd 2:** Knit.

**Rnd 3:** K2, P2 to end.

**Rnds 4 and 5:** As Rnd 3.

Change to dark red yarn.

**Rnd 6:** Knit.

**Rnds 7 and 8:** K2, P2 to end.

Knit 5 rounds.

Begin chart, working pattern using the stranded method.

Cont in dark red yarn only.

Knit 3 rounds.

## SHORT-ROW HEEL

Knit 18.

Change to oatmeal yarn.

K17, w&t.

P16, w&t.

K13, w&t.

P12, w&t.

K9, w&t.

P8, w&t.

K5, w&t.

P4, w&t.

K to first wrap, knit together with st, K2, w&t.

P to first wrap, purl together with st, P2, w&t.

Cont as set by the last 2 rows until you have purled back 18.

Change to dark red yarn.

Knit 26 rnds.

Change to oatmeal yarn.

**Next rnd:** \*K1, SSK, K12, K2tog, K1; rep



from \* once more. 32 sts.

**Next rnd:** Knit.

Rep last 2 rnds once more. 28 sts.

Now rep dec rnd only to 16 sts.

Break yarn, leaving a 20cm tail and graft toe together using Kitchener stitch.

Make a crochet chain about 10cm long, fold in two and knot.

Using your crochet hook, pull the looped end of the chain through the ribbed edge of the stocking to make a hanger. Stuff lightly or fill with sweets!

## SNOWMAN

Using cream yarn and figure eight cast on or Judy's Magic Cast-On, cast on 8 sts and place marker.

**Rnd 1:** Knit.

**Rnd 2:** KFB to end. 16 sts.

Knit 2 rnds.

**Rnd 5:** KFB to end. 32 sts.

Knit 4 rnds.

**Rnd 10:** KFB to end. 64 sts.

Knit 5 rnds.

**Rnd 16:** Purl.

**Rnd 17:** Knit, dec 4 sts evenly across rnd. 60 sts.

**Rnd 18:** K4, (K2tog, K8) to last 6 sts, K2tog, K4. 54 sts.

Knit 3 rnds.

**Rnd 22:** K3, (K2tog, K7) to last 6 sts, K2tog, K4. 48 sts.

Knit 3 rnds.

**Rnd 26:** K2, (K2tog, K6) to last 6 sts, K2tog, K4. 42 sts.

## SIZE

**Stocking** 21cm long

**Snowman** 15cm tall, 9cm wide

## YARN

**Jamieson & Smith** 2ply Jumper Weight (4ply weight; 100% wool; 115m/125yds per 25g ball) The colours below are needed for the full set. Each ornament only uses a small amount of each shade given so you will not need more than one ball of any colour.

**Stocking** Dark Red (1403), Oatmeal (202)

**Snowman** Cream (01A), Pale Pink (72), Black (77), Dark Red (1403), Dark Orange (125)

## NEEDLES & ACCESSORIES

1 set 2.75mm (UK 12/US 2) double-pointed knitting needles

3mm crochet hook

Tapestry needle

Toy stuffing

20cm length of 1cm wide ribbon

Sewing needle and thread to match ribbon

## TENSION

28 sts and 36 rows to 10cm, measured over stocking stitch on 2.75mm needles.

Exact tension is not crucial.

Knit 14 rnds.

**Rnd 41:** K1, (K2tog, K5) to last 6 sts, K2tog, K4. 36 sts.

Cast off, but don't break off yarn. 1 stitch remains.

Pick up and knit 35 sts around top of section just worked. 36 sts.

**Next rnd:** (K1, K2tog) to end. 24 sts.

Knit 3 rnds.

**Next rnd:** (K1, KFB) to end. 36 sts.

Knit 4 rnds.

## SHORT-ROW SHAPING

K16, w&t.

P14, w&t.

K12, w&t.

P10, w&t.

K8, w&t.

P6, w&t.

K14, w&t, knitting wraps and stitches together as you come to them.

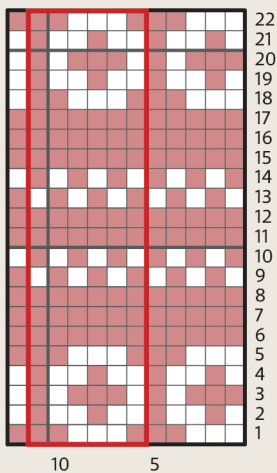
P16, w&t, knitting wraps and stitches together as you come to them.

## HAT

Join in dark red colour and knit 1 rnd, knitting wraps and stitches together as you come to them. 36 sts. ▶

# Christmas Set

## CHART



## KEY

- K using Dark Red
- K using Oatmeal
- Patt rep

Purl 1 rnd.  
 Knit 1 rnd.  
 Rep the last 2 rnds three times more.  
**Next rnd:** K2, (K2tog, K4) to 4 sts before end, K2tog, K2. 30 sts.  
 Knit 1 rnd.  
**Next rnd:** K1, (K2tog, K3) to 4 sts before end, K2tog, K2. 24 sts.  
 Knit 1 rnd.  
**Next rnd:** (K2tog, K2) to end. 18 sts.  
 Knit 1 rnd.  
**Next rnd:** K2tog to end. 9 sts.  
 Break off yarn and use tapestry needle to thread through rem sts. Make mini pom pom in pink yarn and sew onto top of hat.

## SCARF

Using pink yarn cast on 5 sts and work in i-cord for 5cm.  
**\*Next rnd:** K2tog, K1, K2tog. 3 sts.  
 Cont in 3 st i-cord for 5cm.  
**Next rnd:** KFB, K1, KFB. 5 sts.\*\*  
 Cont in 5 st i-cord until section after inc fits around snowman's neck.  
 Rep from \* to \*\*.  
 Cont in 5 st i-cord for 5cm.  
 Break yarn, thread through rem sts and fasten off.  
 Tie scarf around neck, using the narrower sections for the knot.

## FACE

Using orange yarn, cast on 3 sts, leaving a 15cm tail and work in i-cord for 2cm.



Break yarn, and thread through rem sts, leaving a 20cm tail. Do not weave in end.

Using cast on tail, sew cast-on end of nose through back of snowman's hat, and back again, through the length of the i-cord and fasten off.

Use the cast-off tail to wind around the nose over and over, occasionally stitching through the nose to secure it.  
 When you are happy with the shape of the nose, fasten off, and bury the tails in the snowman's head.  
 Use black yarn to stitch on eyes and mouth.

**Optional:** Stitch three small buttons down the front. If you have children under age 3 or housepets we recommend embroidering on buttons instead. ☹