

NEW FOR  
2019

# KNIT YOUR OWN *Nativity* CREATE A CLASSIC CHRISTMAS SCENE



## NATIVITY STABLE

If you've knitted the figures in your *Knit Your Own Nativity* kit and would like to complete the scene, simply download this PDF template and follow the instructions that are included (on page 2).

It's best if you can print directly onto sheets of card, although you could always print onto paper and then stick the paper onto card if you prefer. It's also important that you set your printer to print at 'Actual size' or '100%'.

Each sheet of the template is labelled from A to I, and the instructions refer to these letters to make things nice and easy!

### TO MAKE THE STABLE YOU WILL NEED

- Sheets of card that will fit in your printer
- Pencil
- Scissors
- Craft knife
- Cutting mat
- Metal ruler
- Glue or double-sided sticky tape

ONLY  
£12.99  
INC P&P\*



*Order your copy today!*

CALL 03330 162 138<sup>†</sup> and quote 'Nativity Print 1'

ONLINE [www.buysubscriptions.com/craftspecial](http://www.buysubscriptions.com/craftspecial)

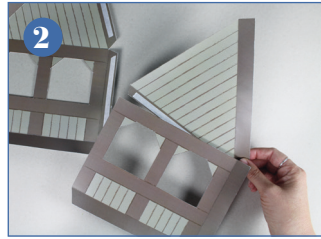
<sup>†</sup>UK calls will cost the same as other standard fixed line numbers (starting 01 or 02) and are included as part of any inclusive or free minutes allowances (if offered by your phone tariff). Outside of free call packages call charges from mobile phones will cost between 3p and 55p per minute. Lines are open Mon to Fri 8am-6pm and Sat 9am-1pm. Overseas please call +44 (0)3330 162 138. \*Prices including postage are £12.99 for UK residents, £15.99 for Europe and £16.99 for Rest of World. Please allow up to 28 days for delivery.

# 'Knit Your Own Nativity' – Stable Instructions

## INSTRUCTIONS



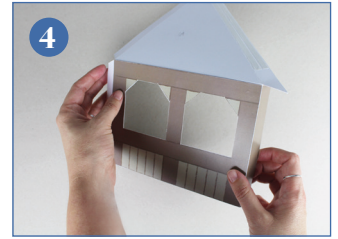
**1** Print the stable pieces and cut them out. Write the letter (A to I) for each piece on the back as soon as you've cut it out. Score and fold along the white dashed lines. You can apply double-sided tape to the flaps now or glue them as you go.



**2** To create the inside walls of the stable, attach A to B, then attach C to D. This will give you two halves of the building.



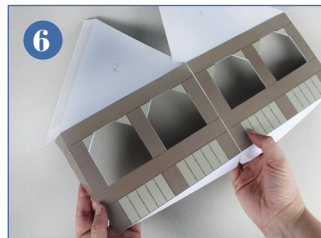
**3** Fold in and stick tab '1' on B, creating a corner. Do the same with tab '2' on D.



**4** To create the left-hand outside wall, stick E to the back of B.



**5** Attach the left-hand section of the stable (made from B and E stuck together) to the right-hand section using the wall tab.



**6** You can now stick the outside of the right-hand side (F) to the back of D.



**7** Fold the roof sections together and stick them to each other using the main tab.



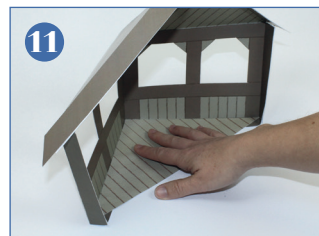
**8** Fold the edges of the roof section down and stick them together using the tab – make sure the tab on the left-hand side goes on top of the right-hand piece.



**9** Attach the outer roof sections – G and H – to the back of the inner roof sections.



**10** Stick the separate, narrow front sections of the outer roof sections to the front of the stable roof.

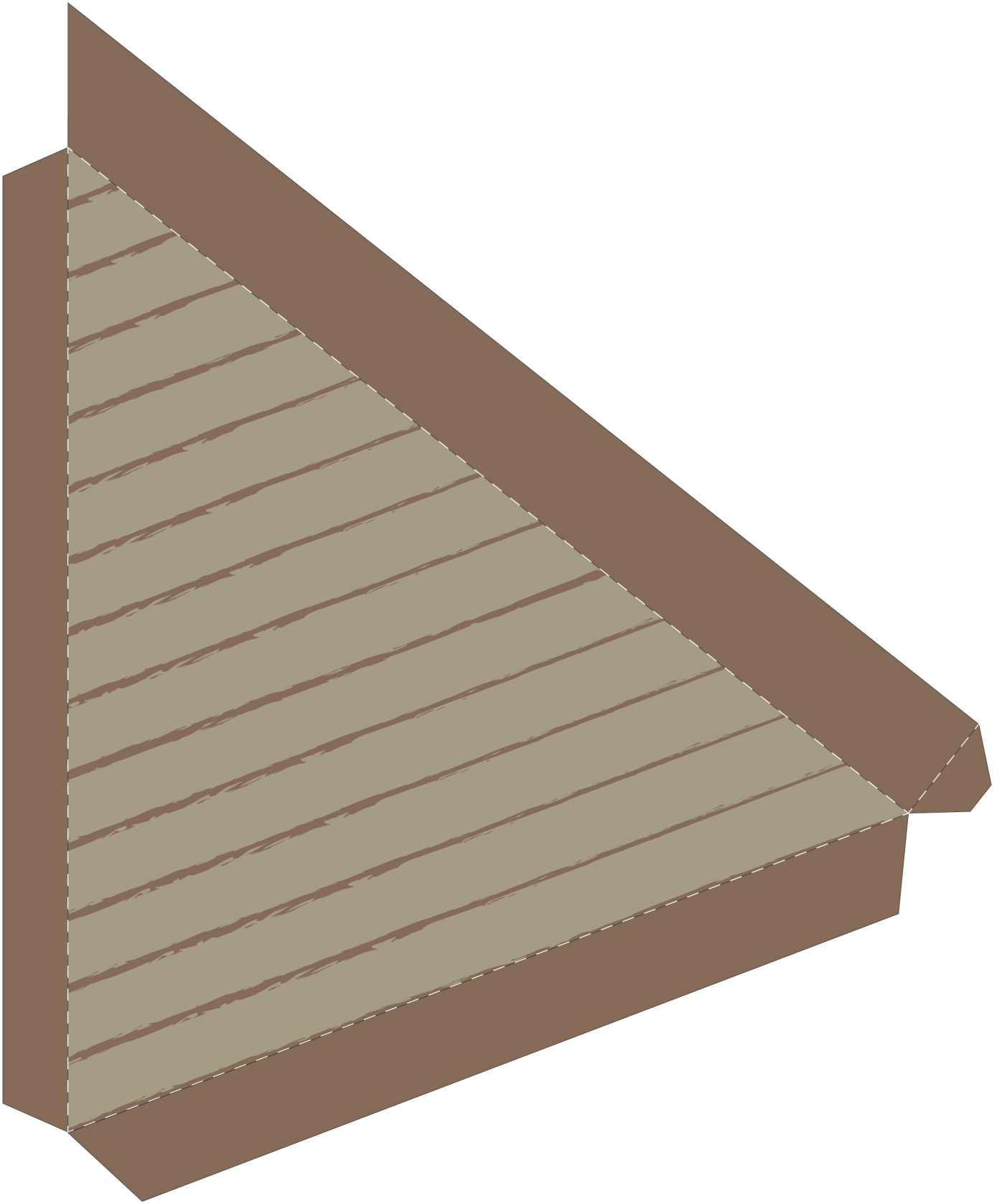


**11** Stick the floor (I) to the inside of the wall tabs.

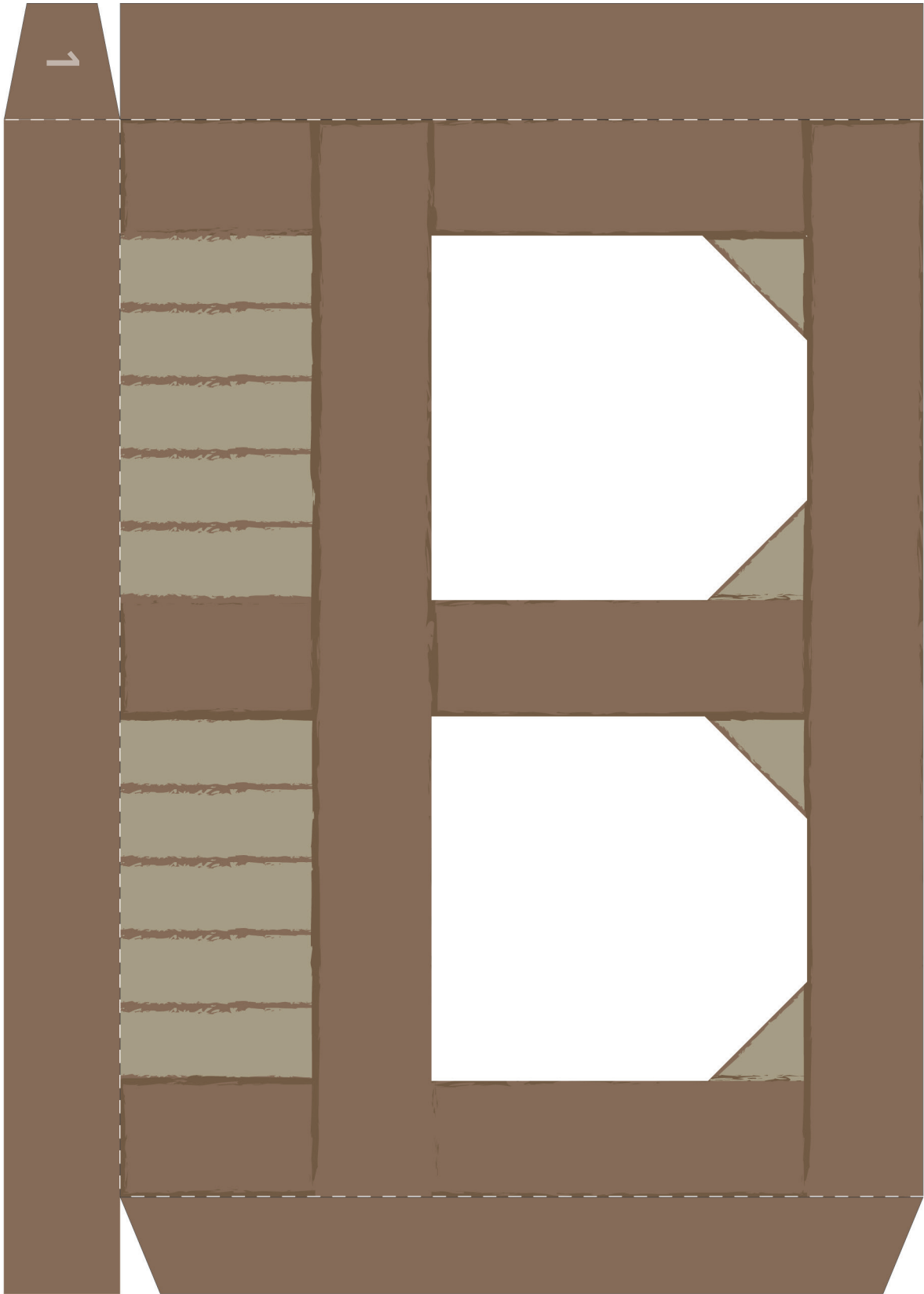


**12** And you're finished! If you like, you can stick an additional piece of thicker card under the base to make the stable a little stronger.

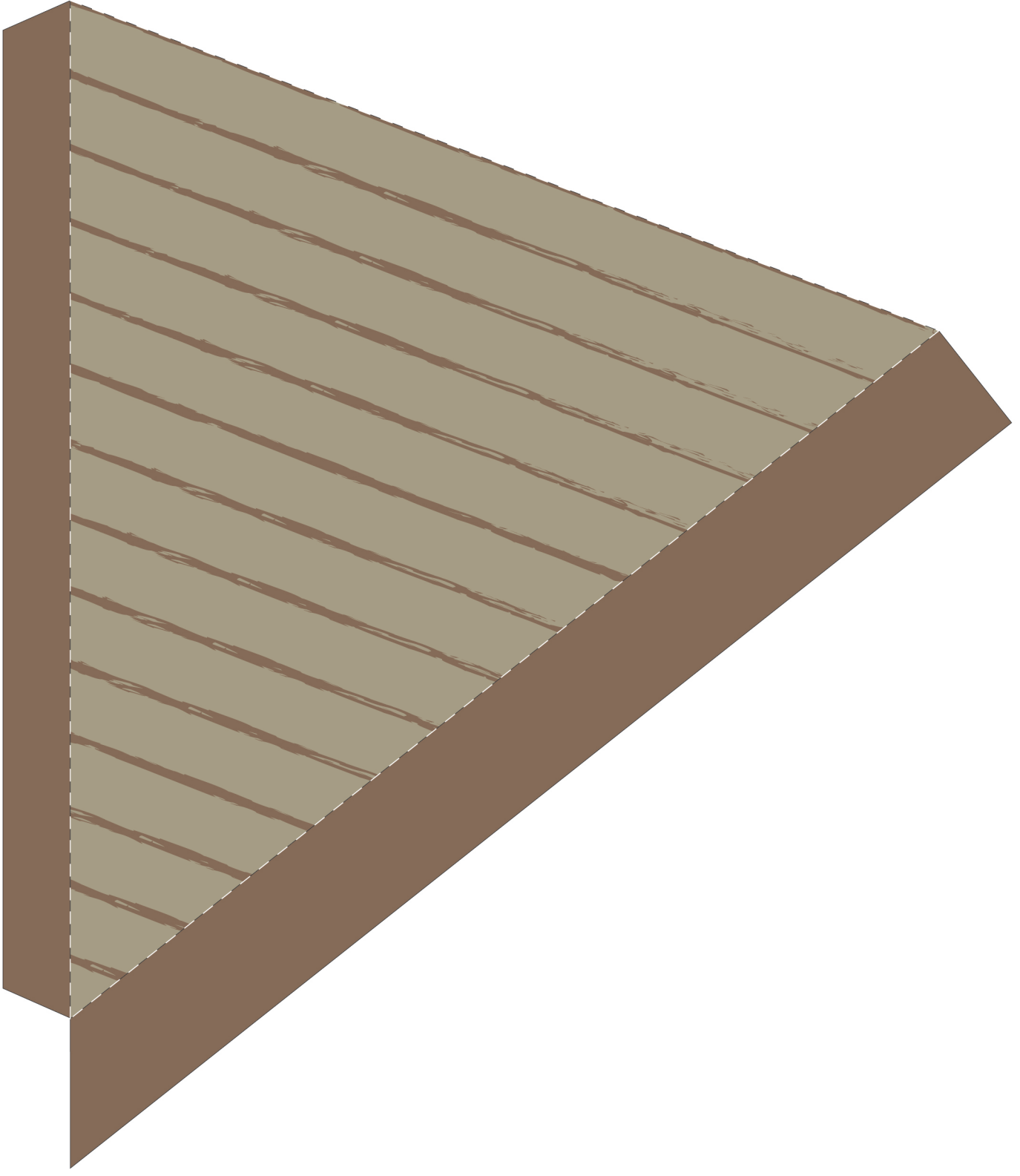
A



B



C



D

