



Snow mittens

designed by Rhian Drinkwater

*Keep
warm this
winter!*

YOU WILL NEED

YARN AND NEEDLES

Twilleys of Stamford,
Mist (45% dralon, 35%
alpaca, 20% wool,
50g/130m)

1 ball of each

Yarn A Plum (1004)

Yarn B Lilac (1002)

A long 3¼mm circular
needle

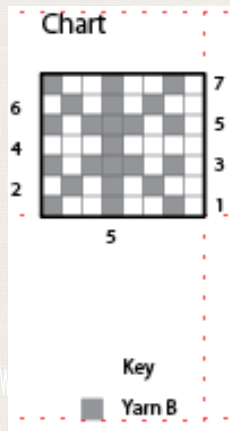
For yarn stockists,
contact TB Ramsden
01943 878689 www.tbamsden.co.uk

TENSION

25 sts and 30 rounds to
measure 10x10cm
(4x4in) in colourwork
pattern using 3¼mm
needles

MEASUREMENTS

Blocked mitten is
23cm long and
approx. 21cm around
the hand – though will
stretch to fit



Rhian's mittens are decorated with a gorgeous snowflake pattern. These ones are in a wintry heather hue, but of course you can use any colour.

Start knitting here...

MITTENS

Cast on 40 sts using 3¼mm needles and yarn A. Use long tail cast on for elasticity.

Join into the round, being careful not to twist.

Round 1 K2, P2; rep to end of round.

Rep this round a further 12 times. [13 rounds total]

Round 14 Knit.

Round 15 Knit.

Round 16 K1, M1, K18, M1, K1; rep once to end of round. [44 sts]

Round 17 Knit.

Round 18 Knit.

Round 19 K1, M1, K20, M1, K1; rep once to end of round. [48 sts]

Round 20 Knit.

Round 21 Knit.

Rounds 22-28 Begin to work from chart, using yarn B for snowflake design and the stranded colourwork technique. Rep the chart 6 times around the mitten.

Rounds 29-31 Knit.

RIGHT HAND

Put 8 sts on waste yarn, then slip them back onto left needle and knit 3 more rounds in yarn A.

LEFT HAND

K40, then knit next 8 sts onto waste yarn, then slip them back onto left needle and knit two more rounds in yarn A.

Rounds 35-41 Work from chart, rep 6 times.

Rounds 42-47 Knit, using yarn A.

Rounds 48-54 Work from chart, rep 6 times.

Round 55 K24, place marker, K24, place marker.

TOP OF MITTEN

Dec round K1, ssk, K to 3 sts before marker, k2tog, K2 (1 st either side of marker), ssk, K to 3 sts before marker, k2tog, K1.

Straight round Knit

Rep these 2 rounds until 16 sts rem.

Distribute these so there are 8 at the top, 8 at the bottom.

Cast off 1 st at each end of each set of sts, then graft the rem 12 sts using Kitchener st.

THUMB

Carefully remove the waste yarn, and pick up the sts either side: 7 sts from the top, 8 sts from the bottom, plus one extra at each side. [17 sts] Knit in yarn A until approx. 1.5cm shorter than length of thumb, then k2tog around the thumb several times until 3 sts rem. Draw the yarn through these three sts and pull tight, then weave in end.



The yarn has alpaca and wool in the blend: it's warm!