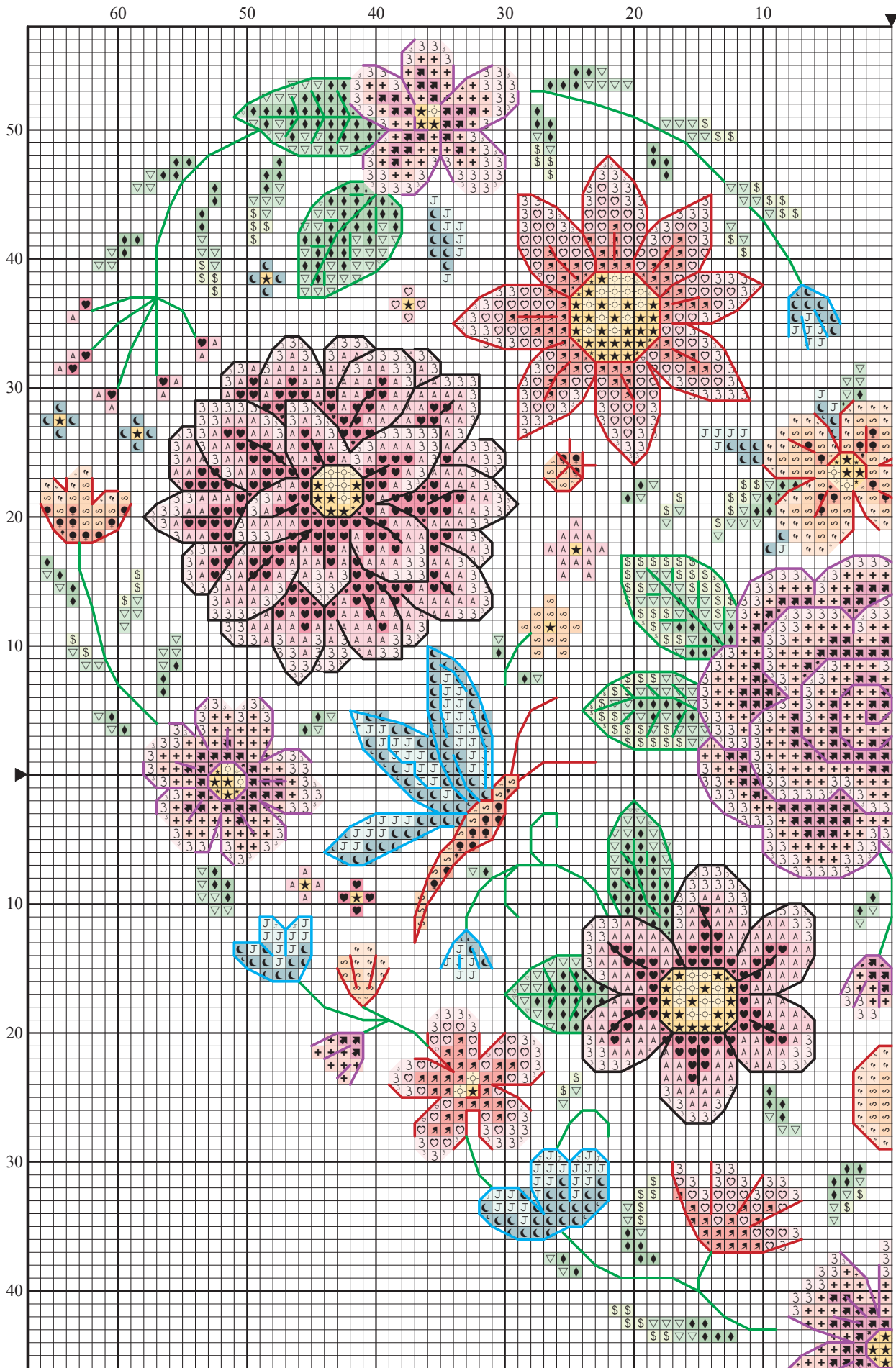
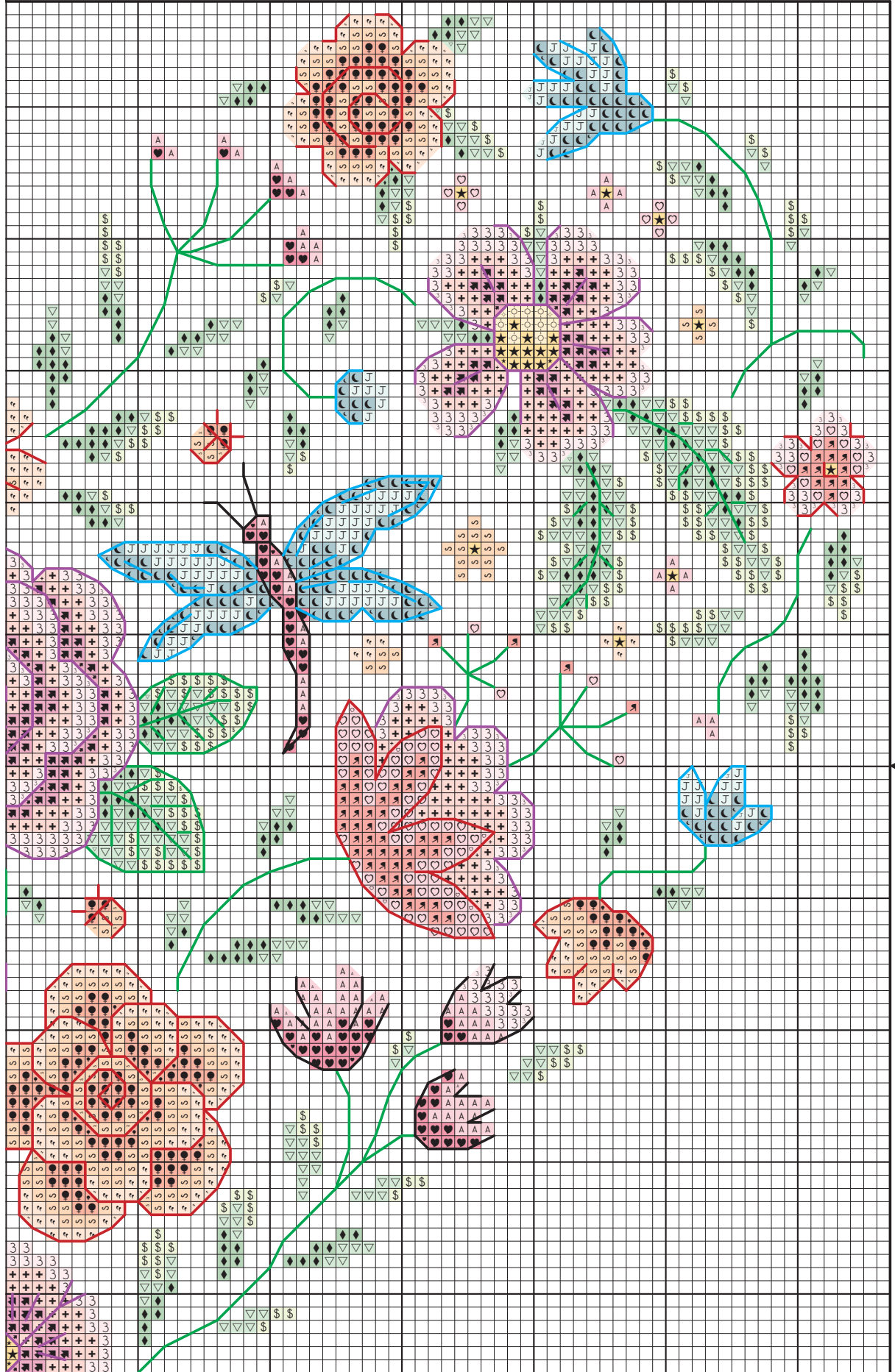


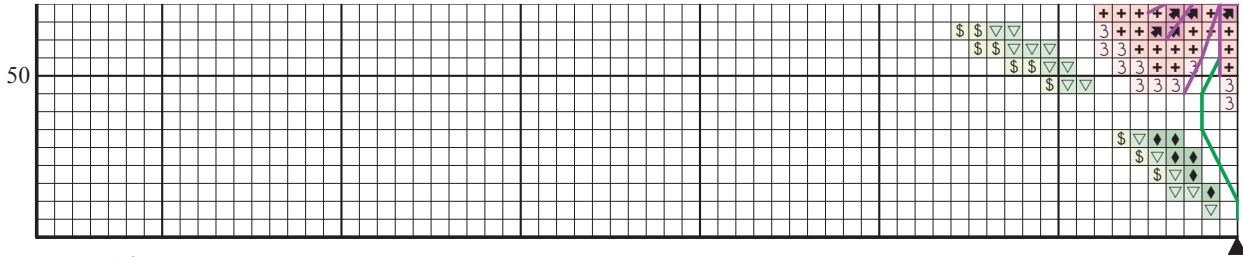
Floral heart by Susan Bates



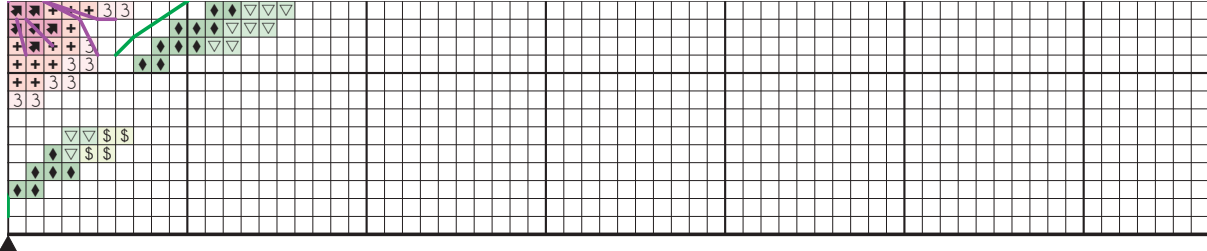
Top left



Top right



Bottom left



Bottom right



### Cross stitch heart key

#### ✕ Cross stitch in two strands

	DMC	Anchor	Madeira	
●	351	10	214	coral
♥	602	57	702	dark pink
A	604	55	614	pink
★	743	302	113	yellow
◊	745	300	111	light yellow
J	747	158	1104	turquoise
\$	772	259	1604	green
3	818	23	502	baby pink
◆	912	209	1213	mint green
▽	954	203	1207	light mint green
◊	967	6	304	light peach
+	3326	36	606	rose pink
∞	3341	328	403	peach
✠	3705	35	410	scarlet
♡	3708	31	408	candy pink
✠	3731	76	506	rose
☾	3766	167	1109	light blue

#### ✕ Backstitch in one strand

—	304	19	511	red
—	909	230	1303	dark mint green
—	915	1029	705	plum
—	3765	169	2505	blue
—	3802	1019	2608	mauve

**STITCH COUNT** 115 high x 132 wide

**DESIGN AREA** 14 HPI (28-count evenweave) – 21x24cm (8¼x9½in)

This design was stitched using DMC stranded cotton on 28-count evenweave over two threads of the fabric