



'Spoondrift' by Janet Clare Quilt Block of the Month

'Spoondrift' (n.) a showery sprinkling of seawater or fine spray swept from the tops of waves

I grew up on the coast not far from the white cliffs of Dover and am very familiar with 'spoondrift' although I didn't know there was an actual name for it until very recently. I have always loved being by the sea; not on hot, busy days but on the blustery, windswept and bracing ones when we have the place to ourselves and come home feeling exhilarated with rosy cheeks and cold toes.

Every few seasons I design a fabric collection full of boats, whales and gulls in my favourite indigo, blue and cream colour palette and so here is 'Ebb and Flow' all ready to be made into 'Spoondrift' a quilt inspired by our cherished carefree days by the seaside.

A few notes before you begin

'Spoondrift' is made with a variety of techniques including hand and machine piecing, fusible appliqué and embroidery. Some blocks will be easy and some not so much!

There will be two blocks a month for twelve months, with the setting shown in month thirteen. One setting for the finished quilt will be approximately 65" x 72".

My quilt features indigo, blue, grey, cream and sand coloured fabrics from my collection 'Ebb and Flow' for Moda, but you can easily choose your own using the colour swatches provided.

The fabric requirements that follow are for the main quilt setting. Be as thrifty as possible when cutting your fabrics and keep all your scraps as they may well be useful in later blocks!

'Ebb and Flow' is available now in quilt shops and in my [ETSY shop](#).

Janet





REQUIREMENTS

My 'Spoondrift' quilt features fabrics from my collection 'Ebb and Flow' for Moda, but you can easily choose your own. Use the little colour swatches below to help you select other fabrics.

TO PIECE BLOCKS



1/4 yd
Woven Texture
Dark Ocean
(1357-11)



1/4 yd
Seabirds
Sand
(1481-24)



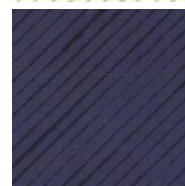
1 yd
Stripe
Pearl
(1485-21)



1/4 yd
Cowes
Dark Ocean
(1480-20)



3/8 yd
Seaweed
Pearl
(1483-19)



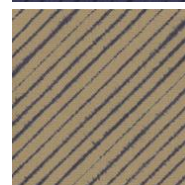
1/3 yd
Stripe
Dark Ocean
(1485-23)



1/2 yd
Cowes
Ocean
(1480-21)



3/8 yd
Seaweed
Ocean
(1483-21)



1/4 yd
Stripe
Sand
(1485-25)



3/8 yd
Cowes
Sky
(1480-23)



1/4 yd
Seaweed
Sand
(1483-24)



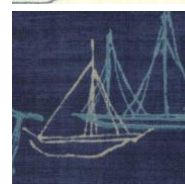
1 yd
Ships
Pearl
(1486-11)



1/4 yd
Cowes
Sand
(1480-24)



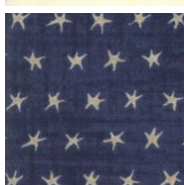
2/3 yd
Starfish
Pearl
(1484-19)



1/2 yd
Ships
Dark Ocean
(1486-12)



2/3 yd
Seabirds
Pearl
(1481-19)



1/3 yd
Starfish
Dark Ocean
(1484-20)

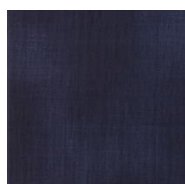


1/4 yd
Seabirds
Sky
(1481-23)



1/3 yd
Starfish
Ocean
(1484-22)

TO PIECE SASHING AND BIND



1 1/2 yds
Woven Texture
Dark Ocean
(1357-11)



1/3 yd
Woven Texture
Pearl
(1357-17)

BACKING/WADDING

Backing - 4 1/8 yards
(one horizontal seam)

Wadding - 73" x 80"