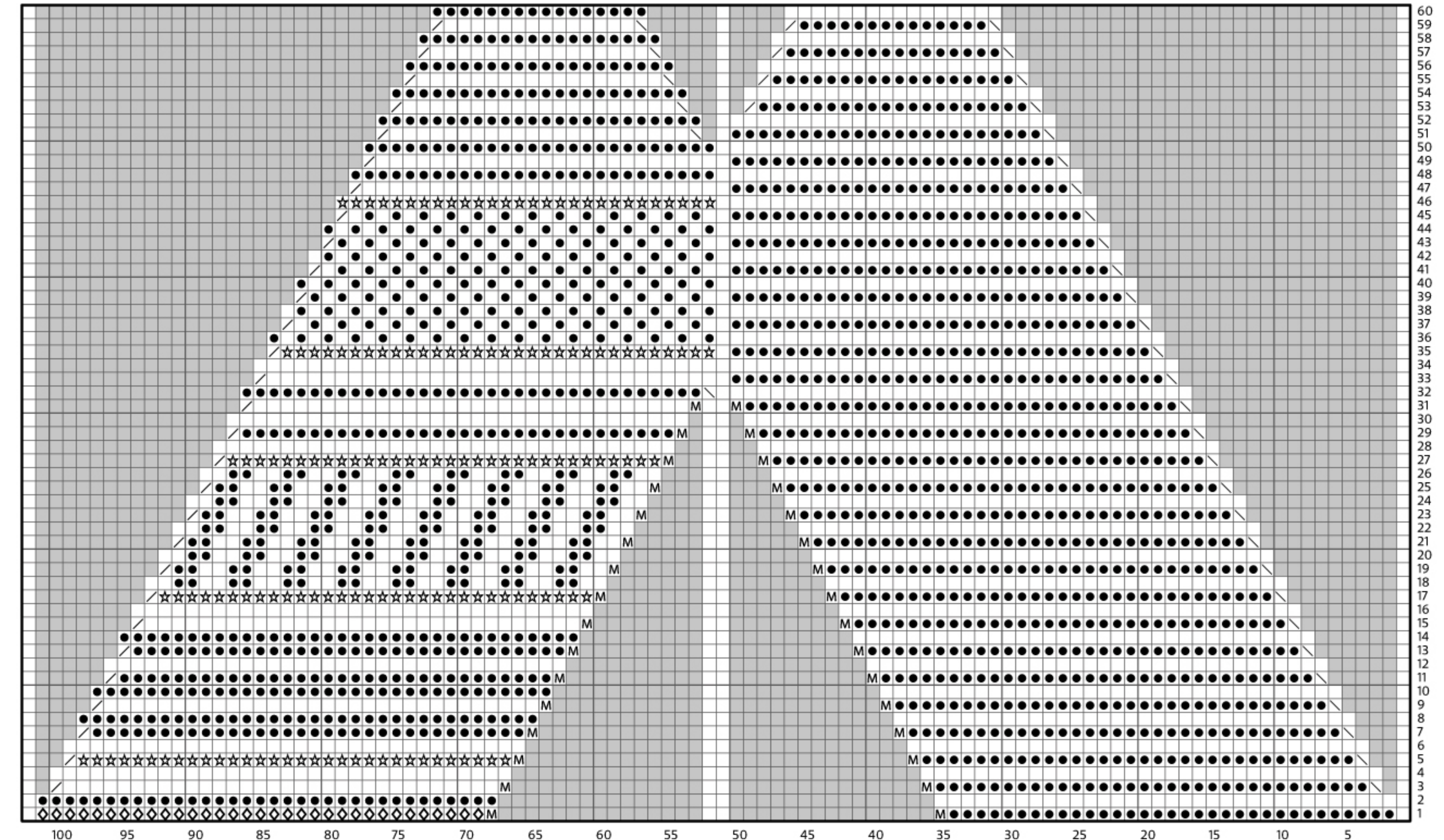
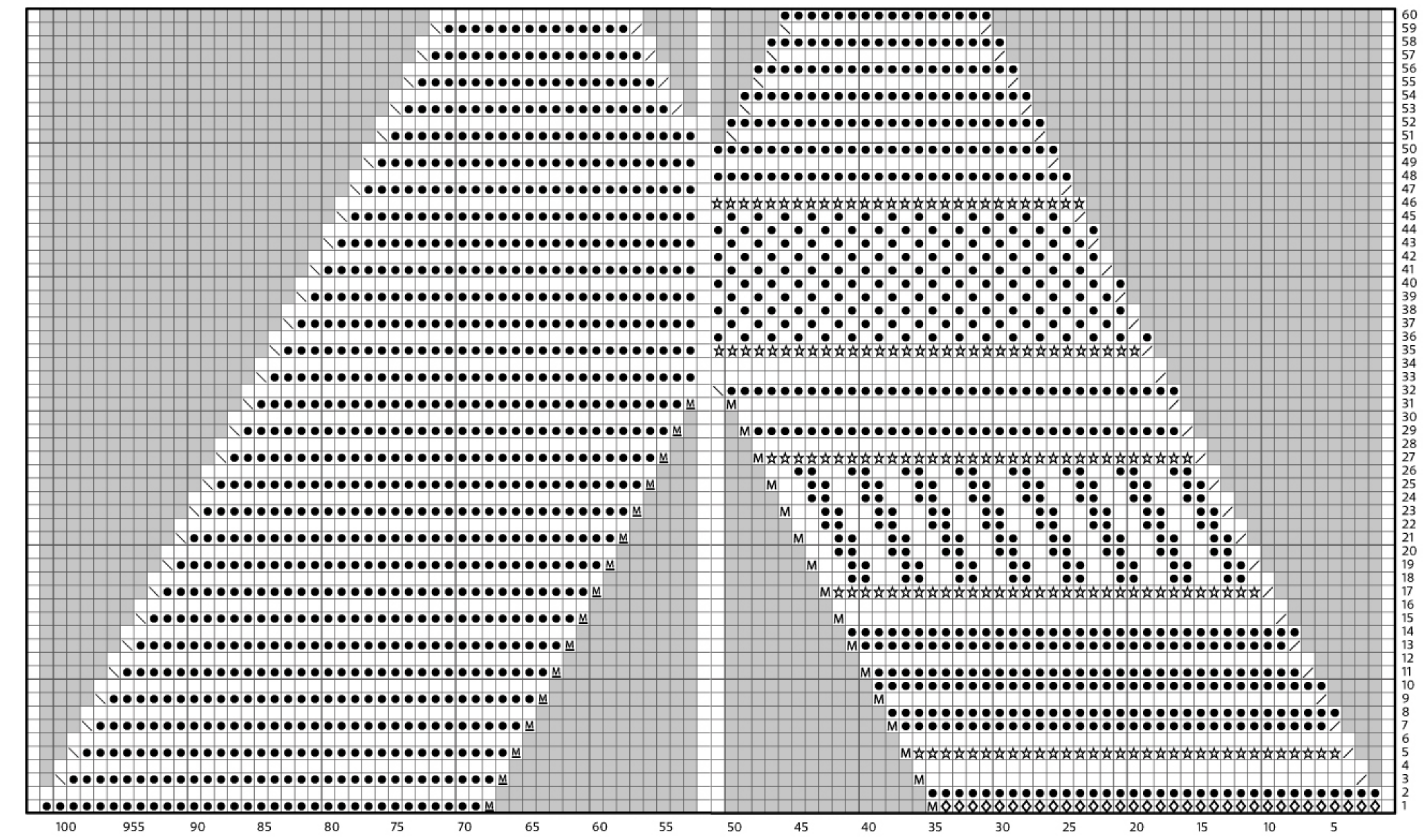


Chart B



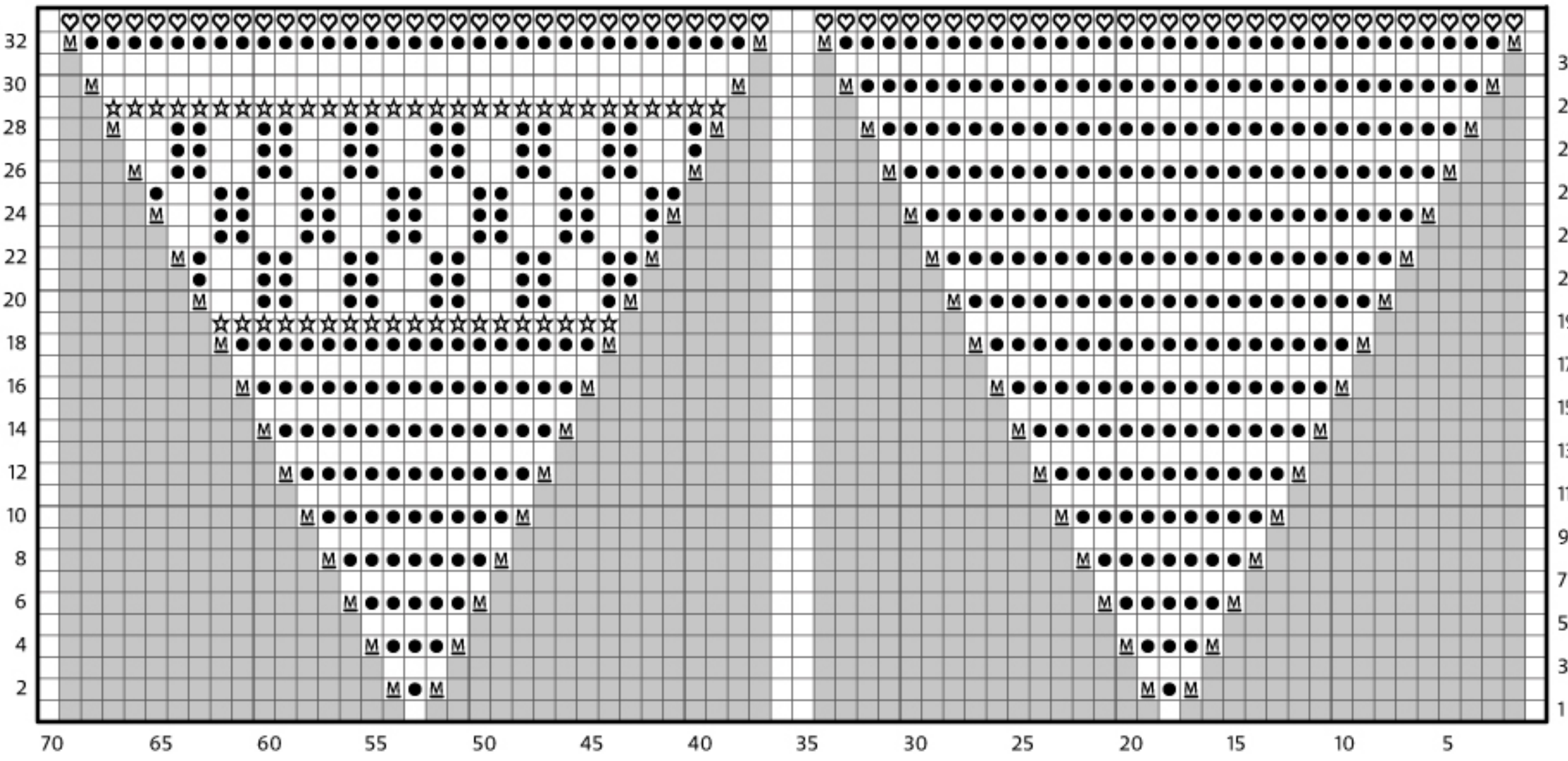
60
59
58
57
56
55
54
53
52
51
50
49
48
47
46
45
44
43
42
41
40
39
38
37
36
35
34
33
32
31
30
29
28
27
26
25
24
23
22
21
20
19
18
17
16
15
14
13
12
11
10
9
8
7
6
5
4
3
2
1

Chart D



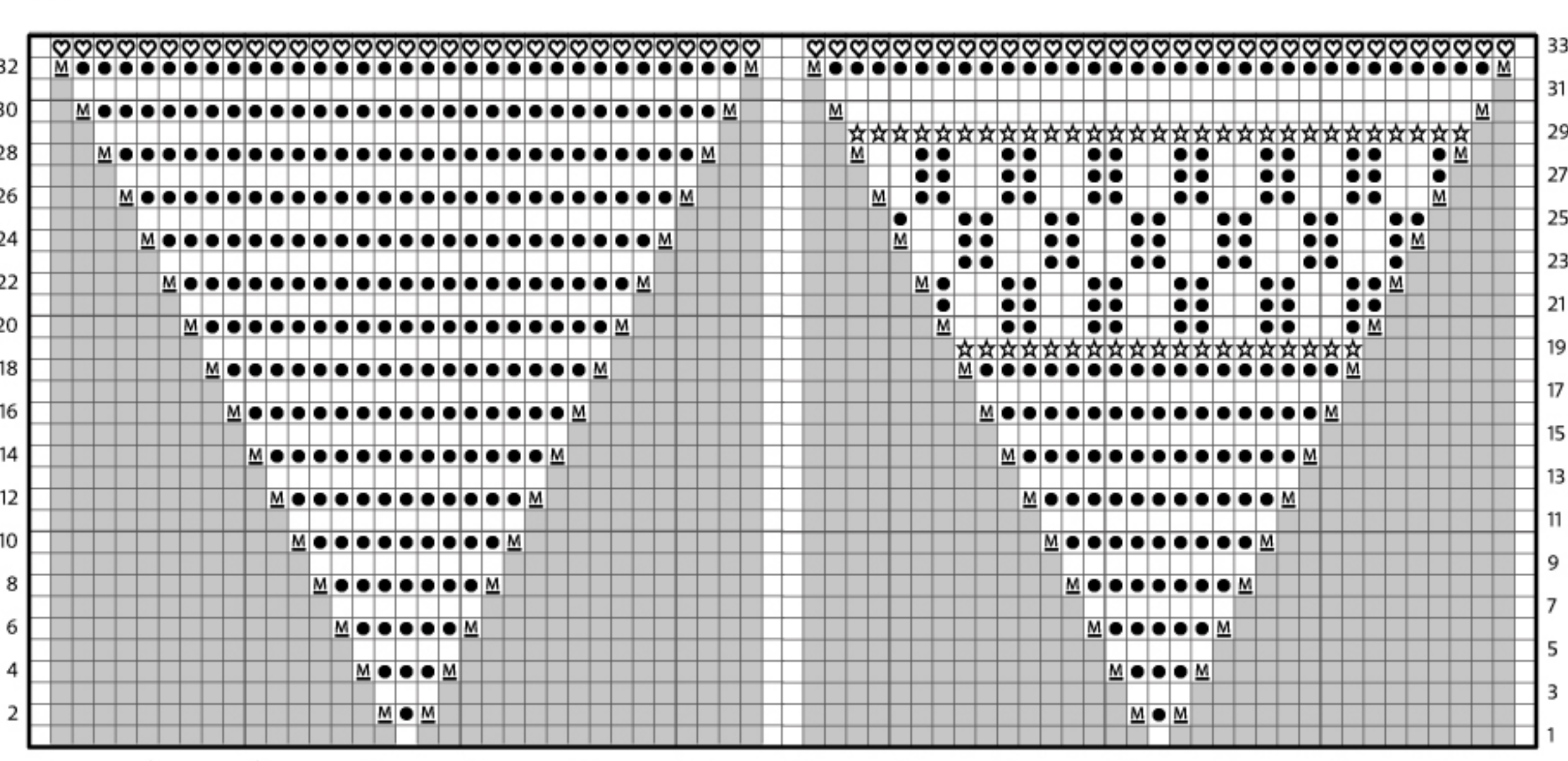
60
59
58
57
56
55
54
53
52
51
50
49
48
47
46
45
44
43
42
41
40
39
38
37
36
35
34
33
32
31
30
29
28
27
26
25
24
23
22
21
20
19
18
17
16
15
14
13
12
11
10
9
8
7
6
5
4
3
2
1

Chart A



32
31
29
27
25
23
21
19
17
15
13
11
9
7
5
3
1

Chart C



33
31
29
27
25
23
21
19
17
15
13
11
9
7
5
3
1



- Key
- Knit on RS/ P on WS
 - Purl on RS/ K on RS
 - K2tog
 - SSK
 - M1
 - MIP
 - No stitch
 - Vikkel braid
 - S13 sts, dropping extra wraps, transfer 3 sts back onto LH ndl, (K1, P1, K1) into these 3 sts tog
 - K1, wrapping yarn twice around