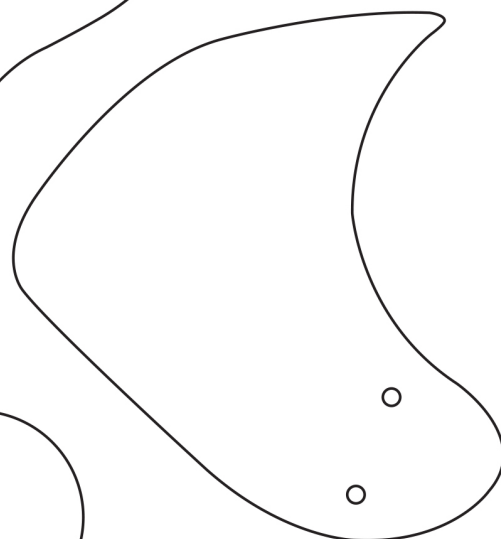
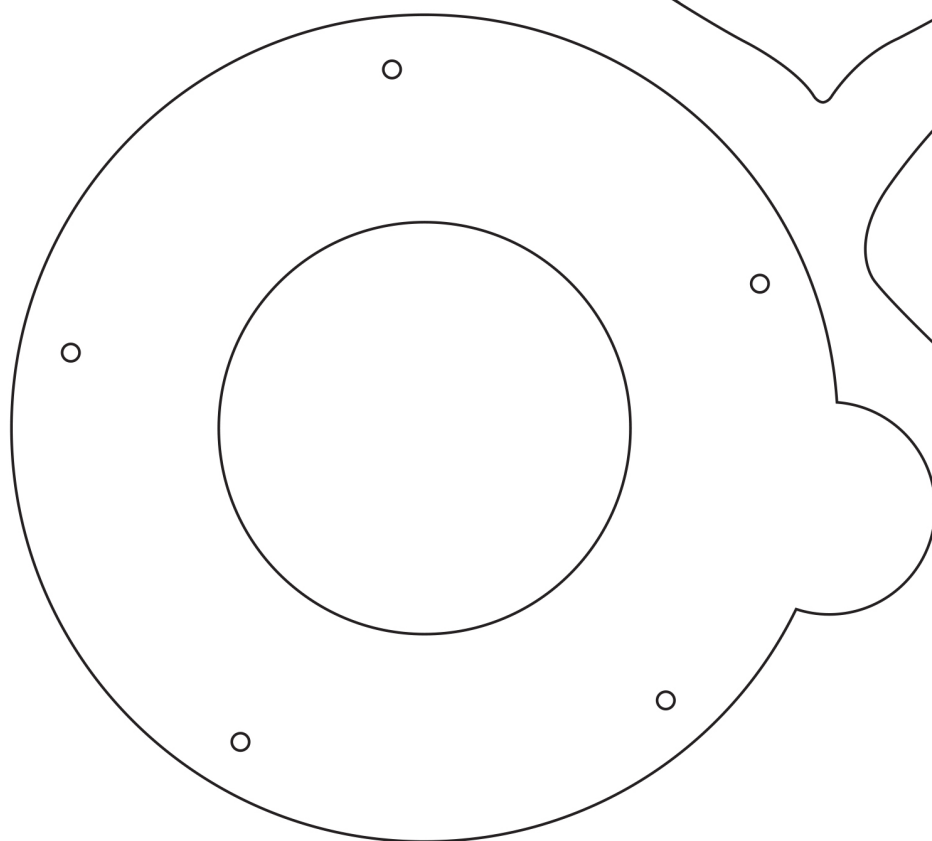
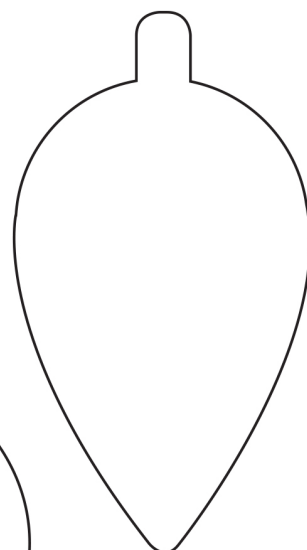
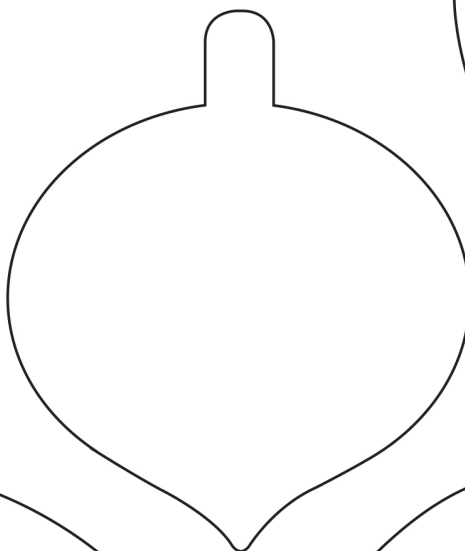
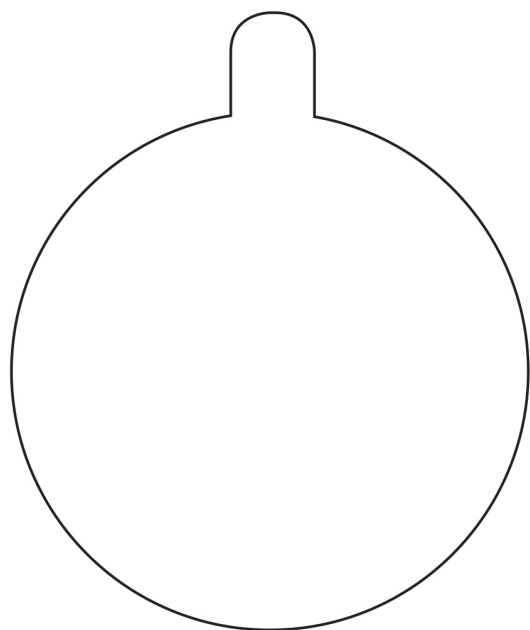


# Your free *templates*



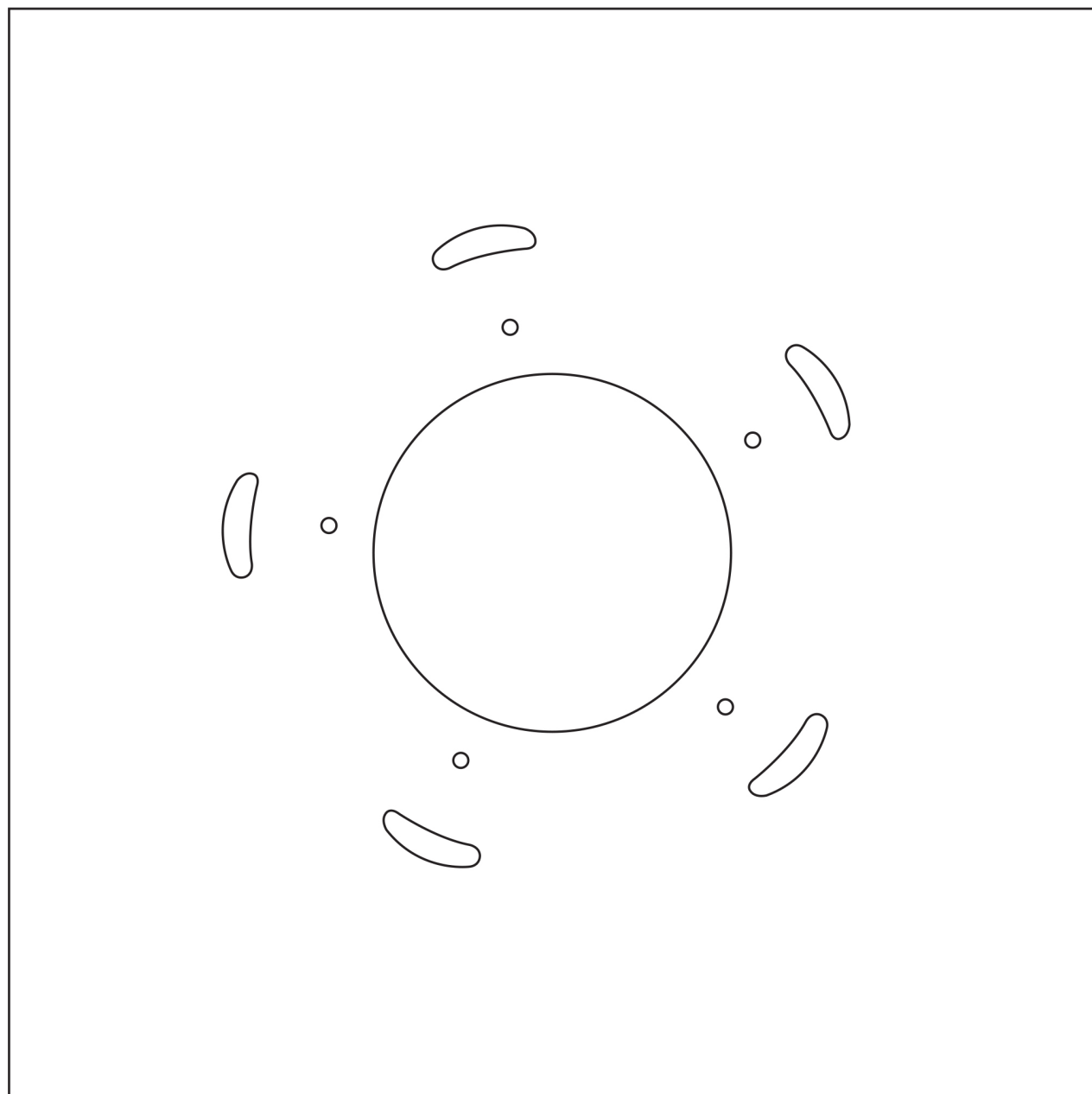
All the templates & outlines you'll need  
for the projects in issue 196

Iris project  
page 64,  
use at 100%



Cut	———
Mountain fold	- - - - -
Valley fold	· · · · ·

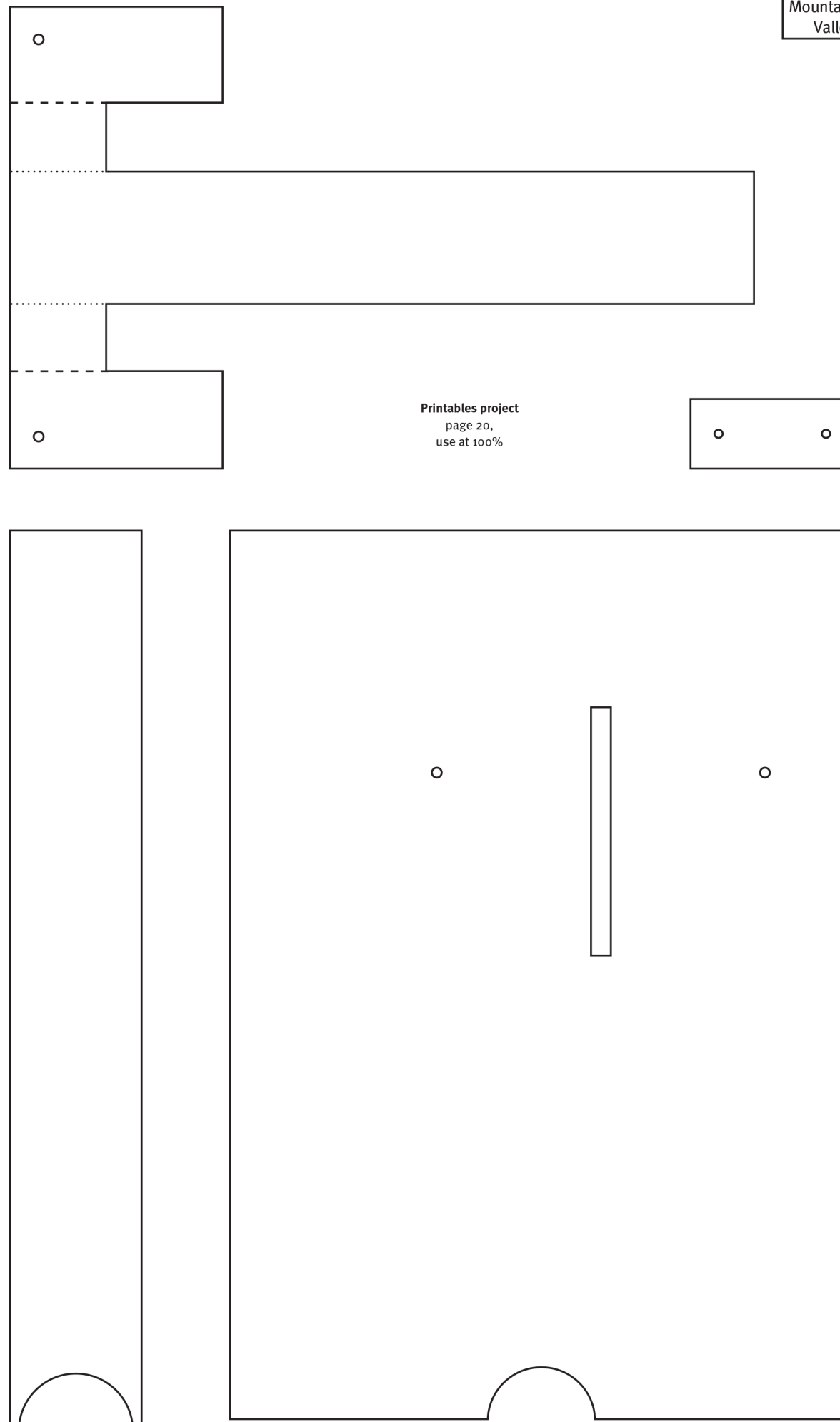
# Your free *templates*



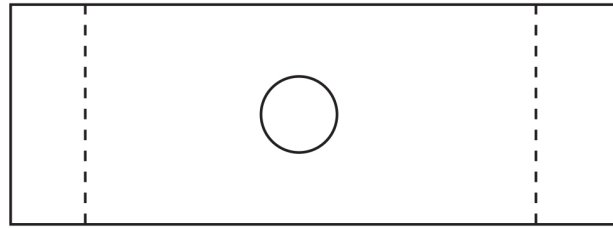
Iris project  
page 64,  
use at 100%

Cut ———  
Mountain fold - - - - -  
Valley fold ·····

Cut ———  
Mountain fold - - - - -  
Valley fold ·····

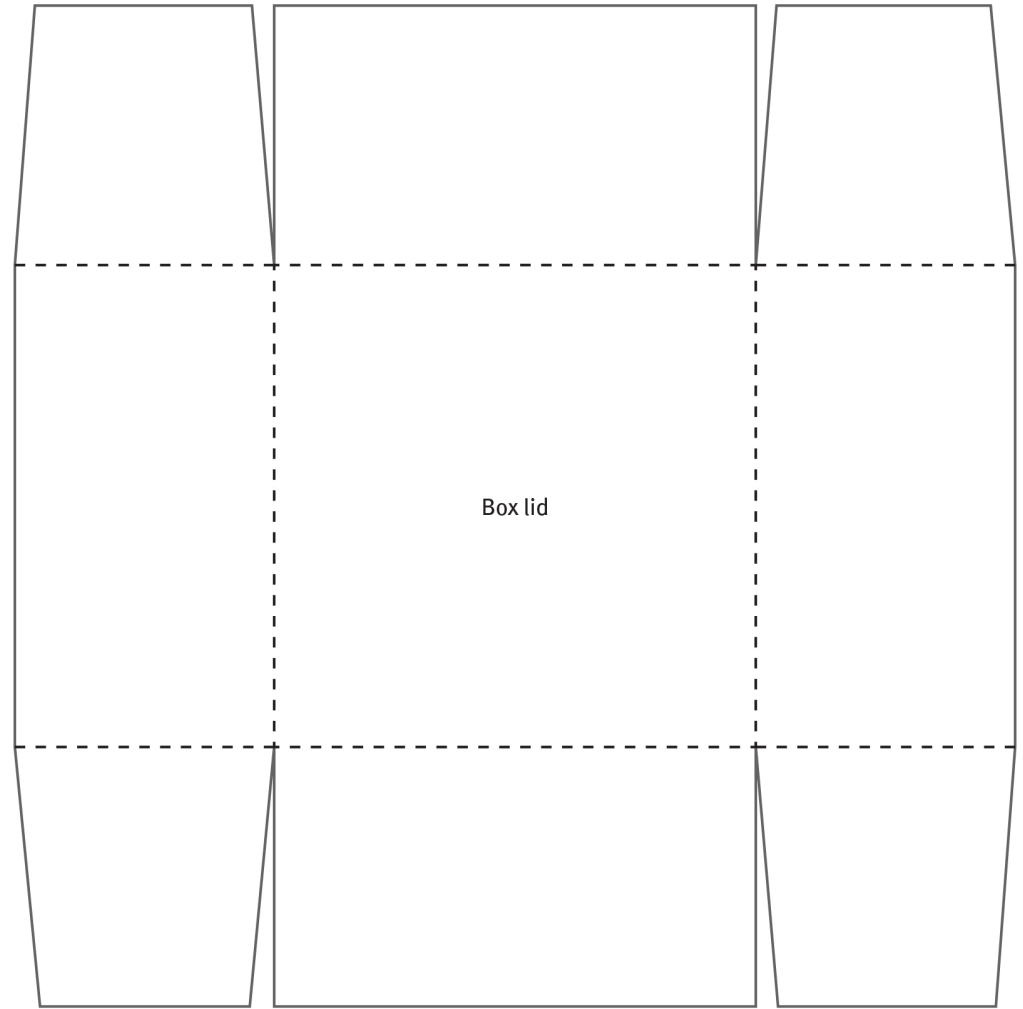


Printables project  
page 20,  
use at 100%

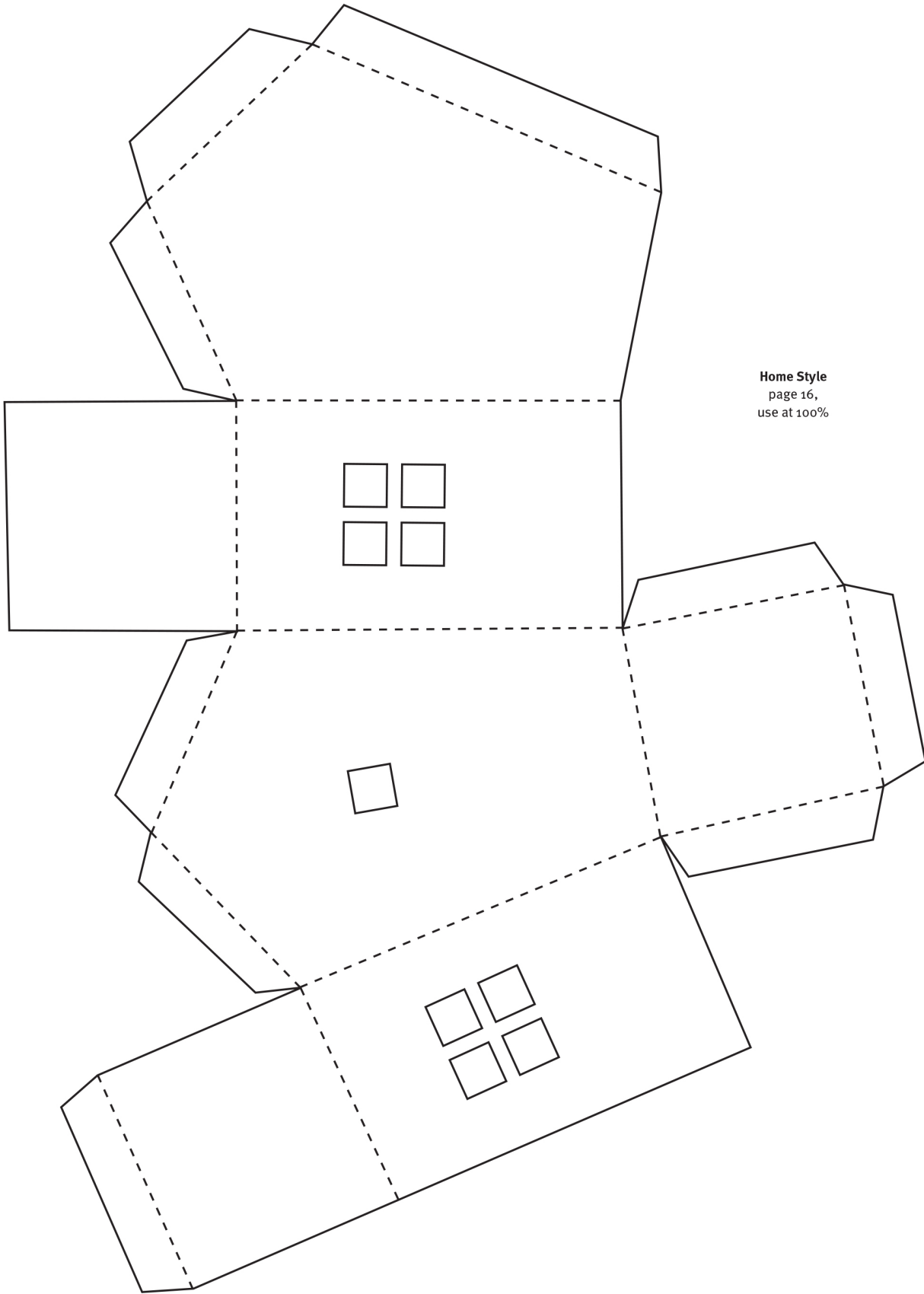


Cut ———  
Mountain fold - - - - -  
Valley fold .....  
.....

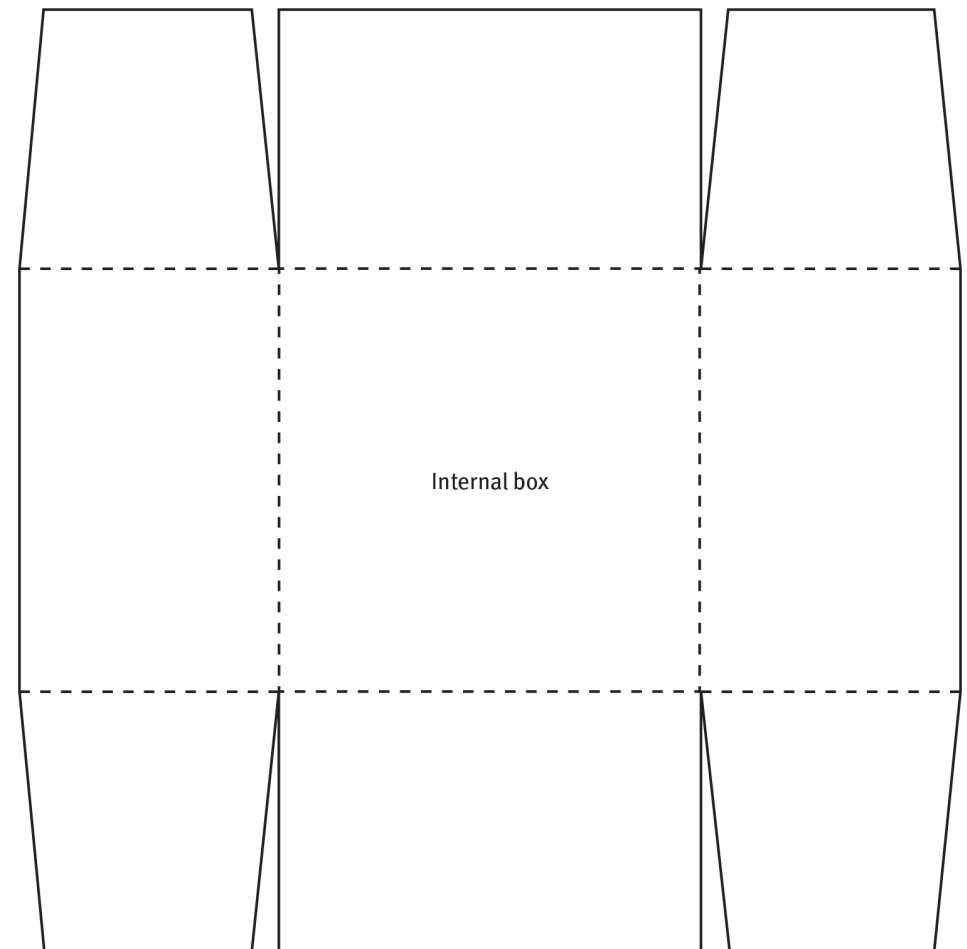
Edible card project  
page 8,  
use at 100%



Box lid

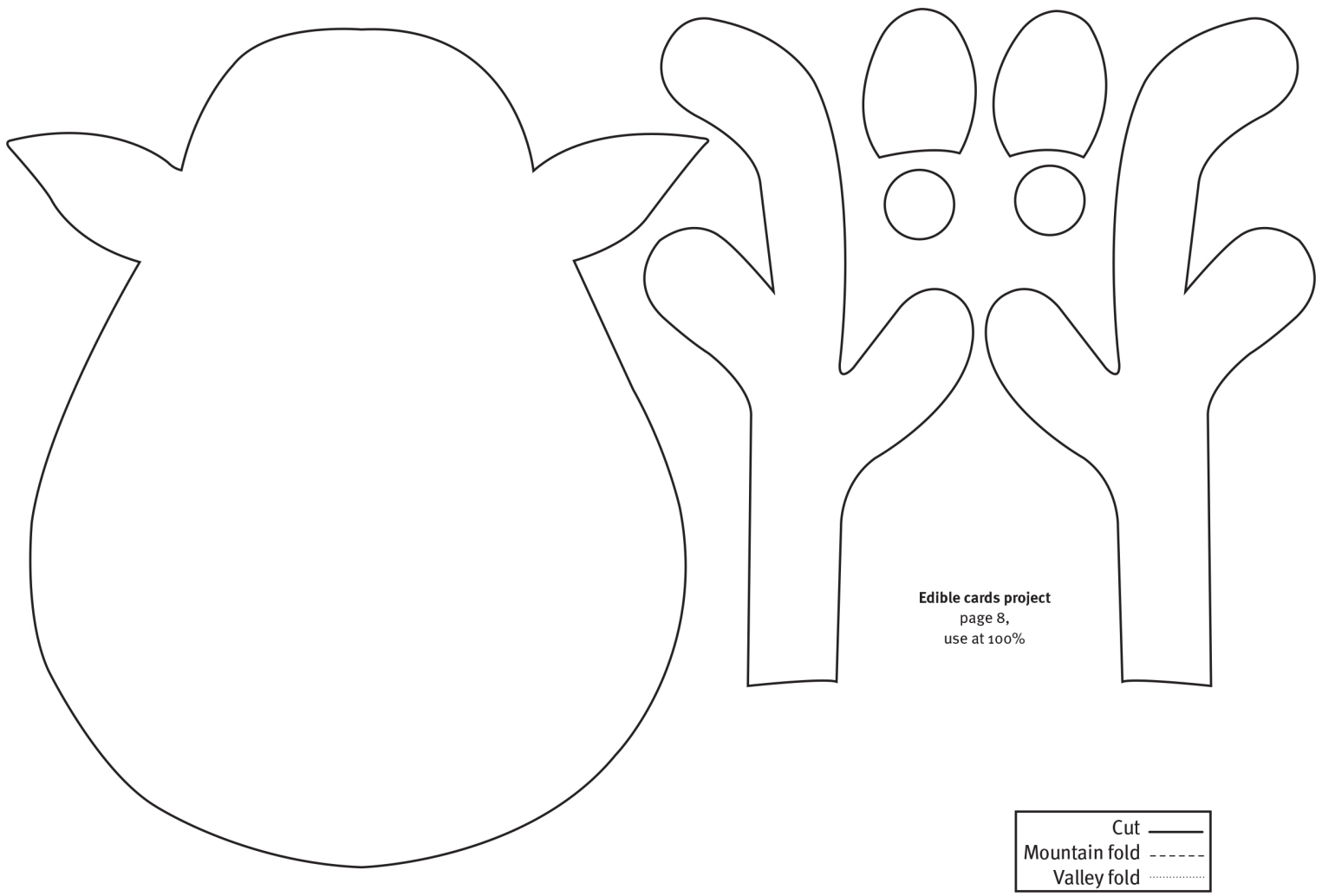


Home Style  
page 16,  
use at 100%



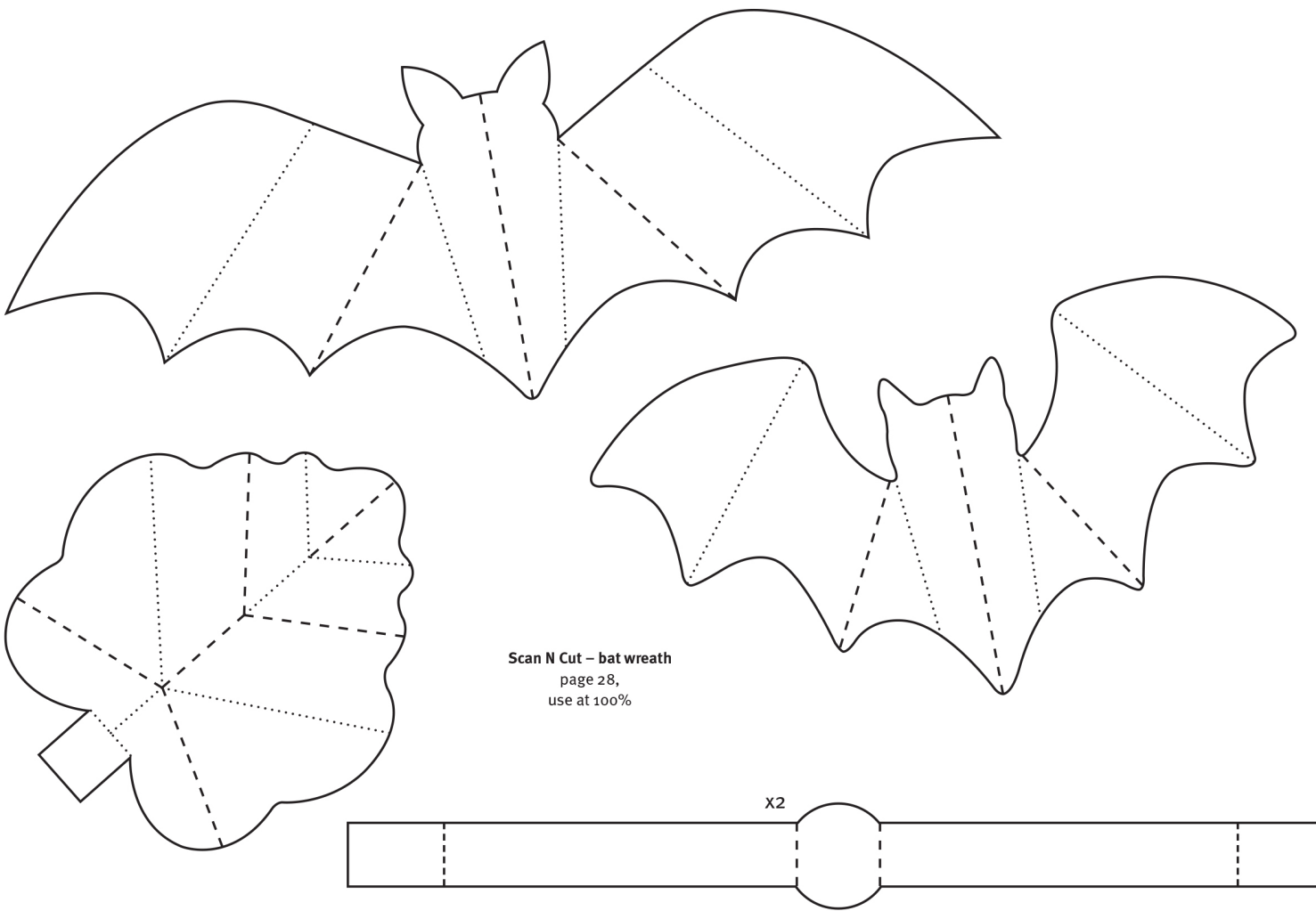
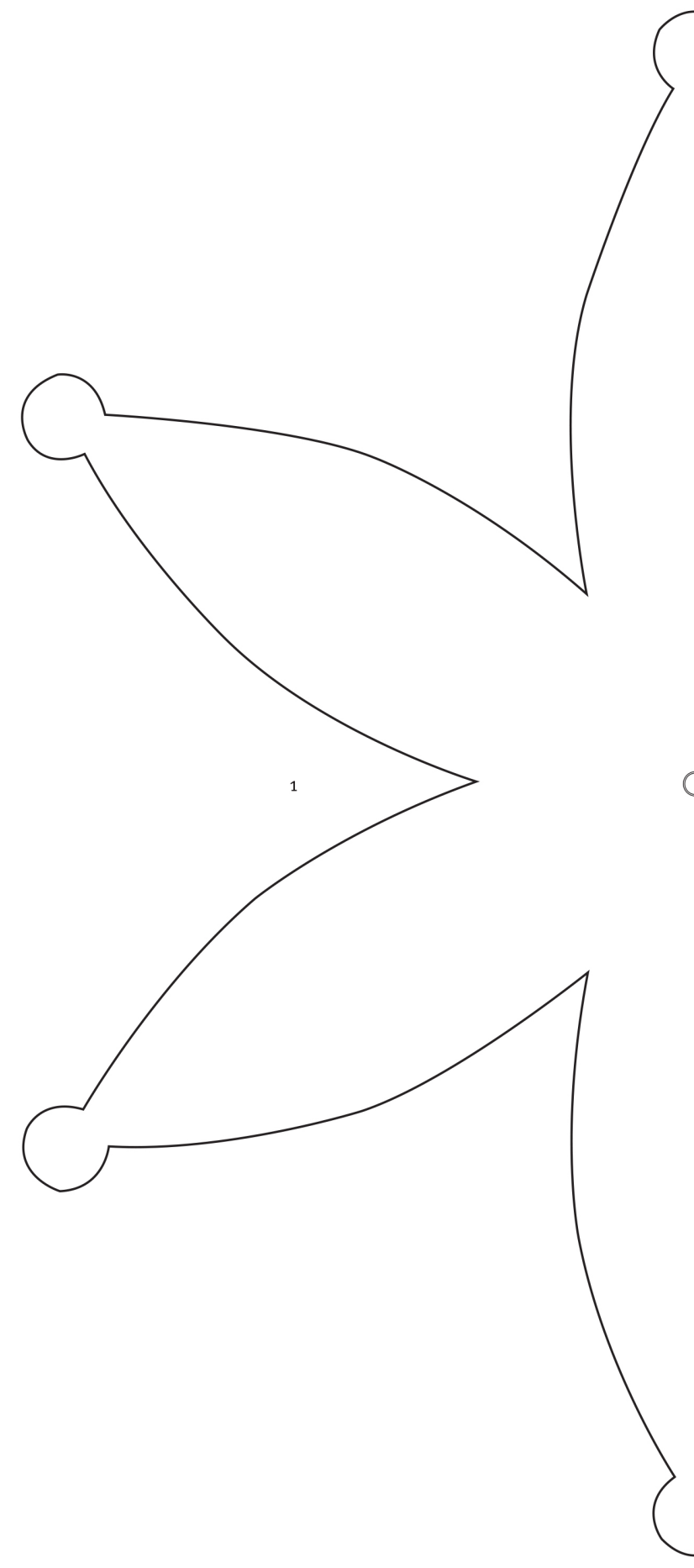
Internal box

Cut ———  
Mountain fold - - - - -  
Valley fold .....  
.....



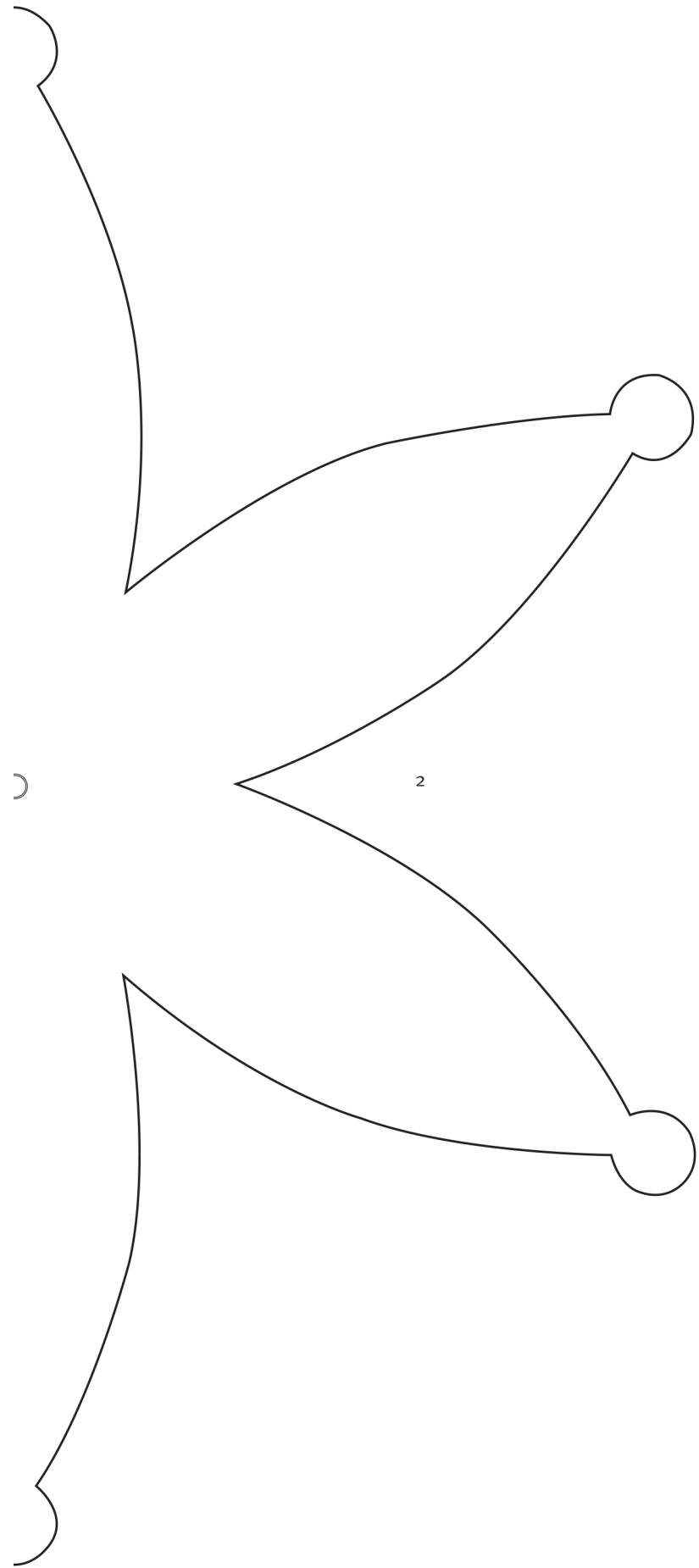
Cut ———  
Mountain fold - - - -  
Valley fold ·····

Scan N Cut – bat wreath  
page 28,  
use at 100%

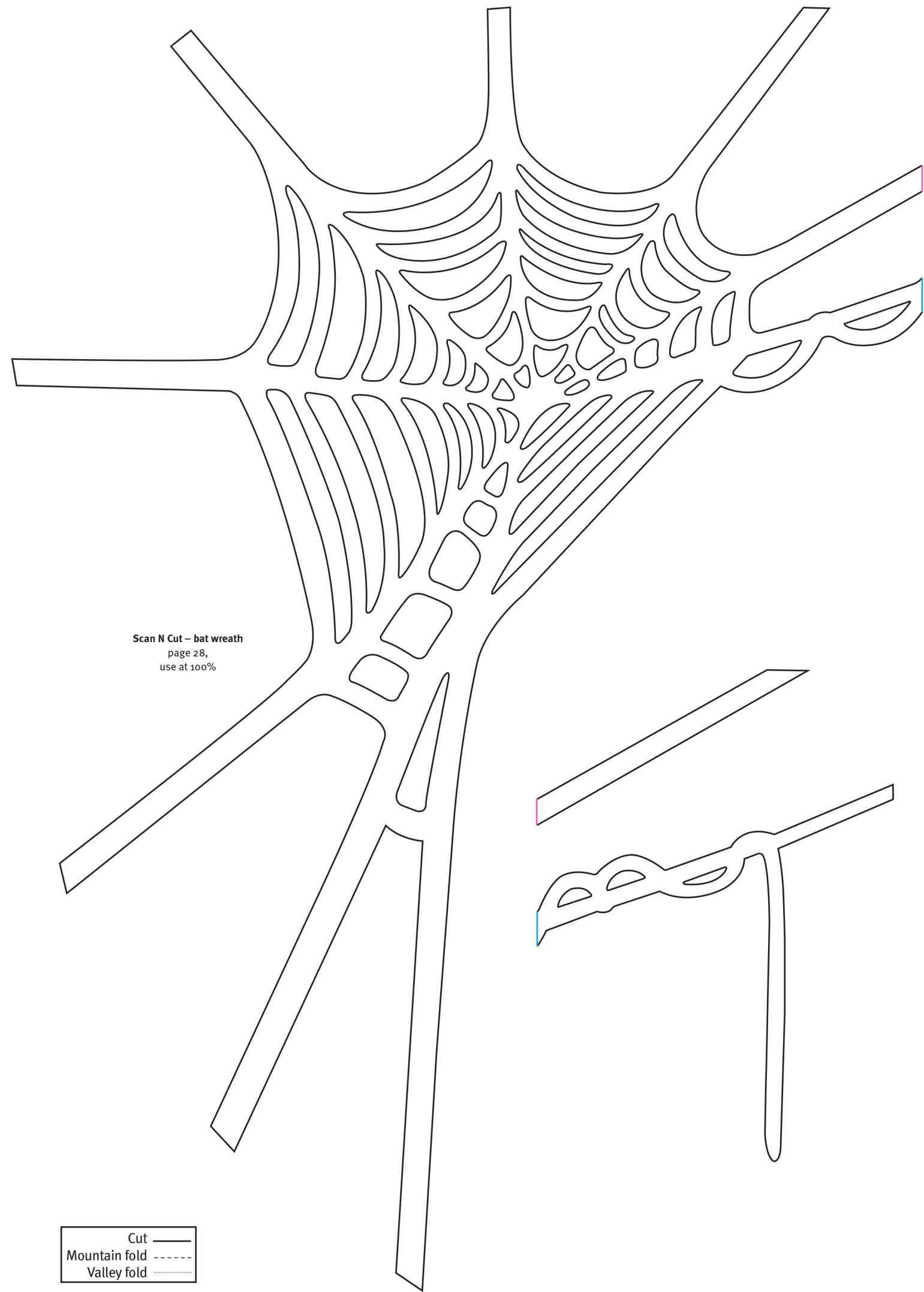
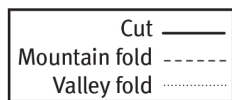


Cut ———  
Mountain fold - - - -  
Valley fold ·····

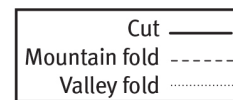
Scan N Cut – bat wreath  
page 28,  
use at 100%

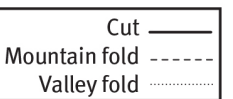
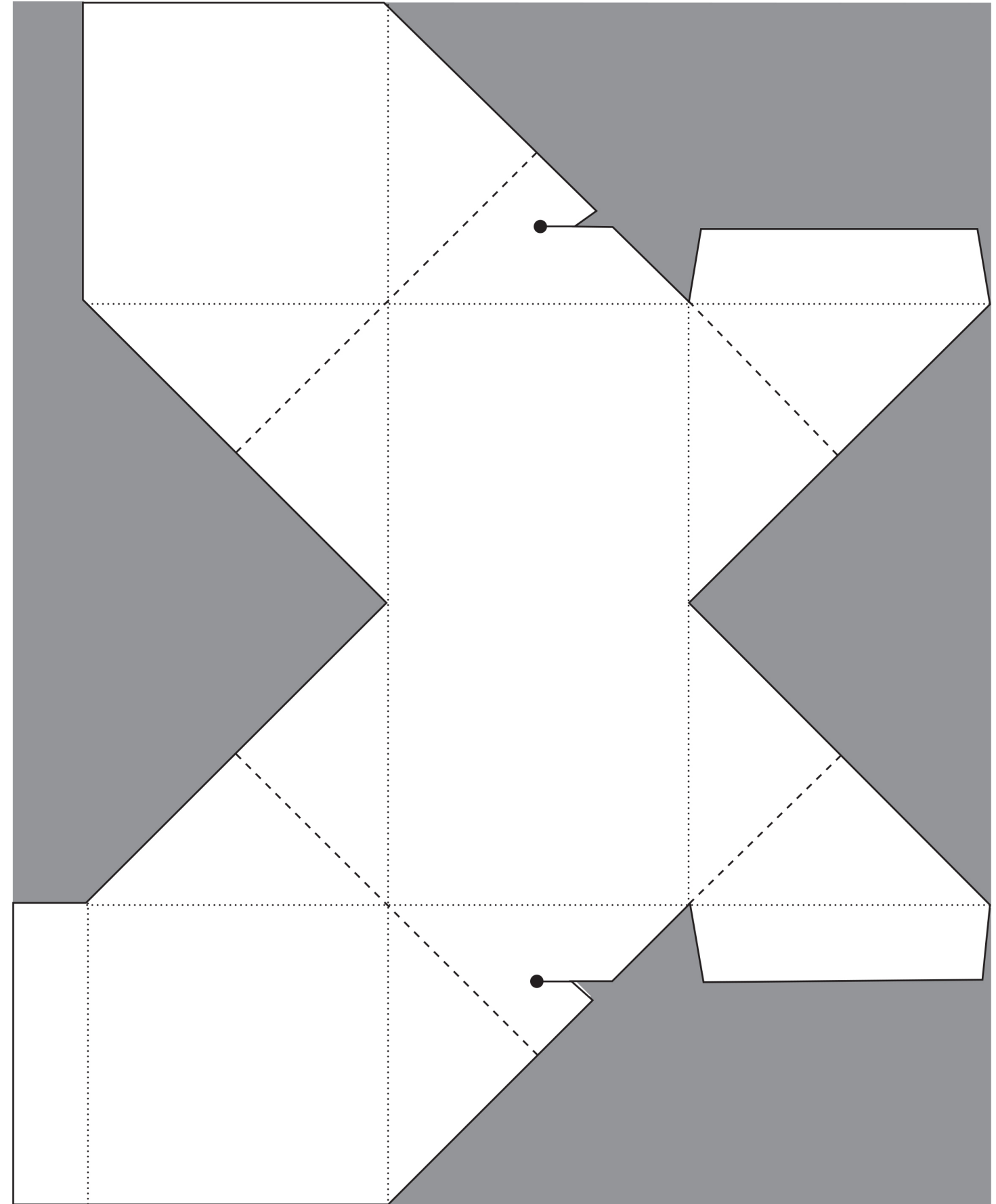
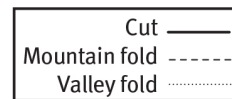
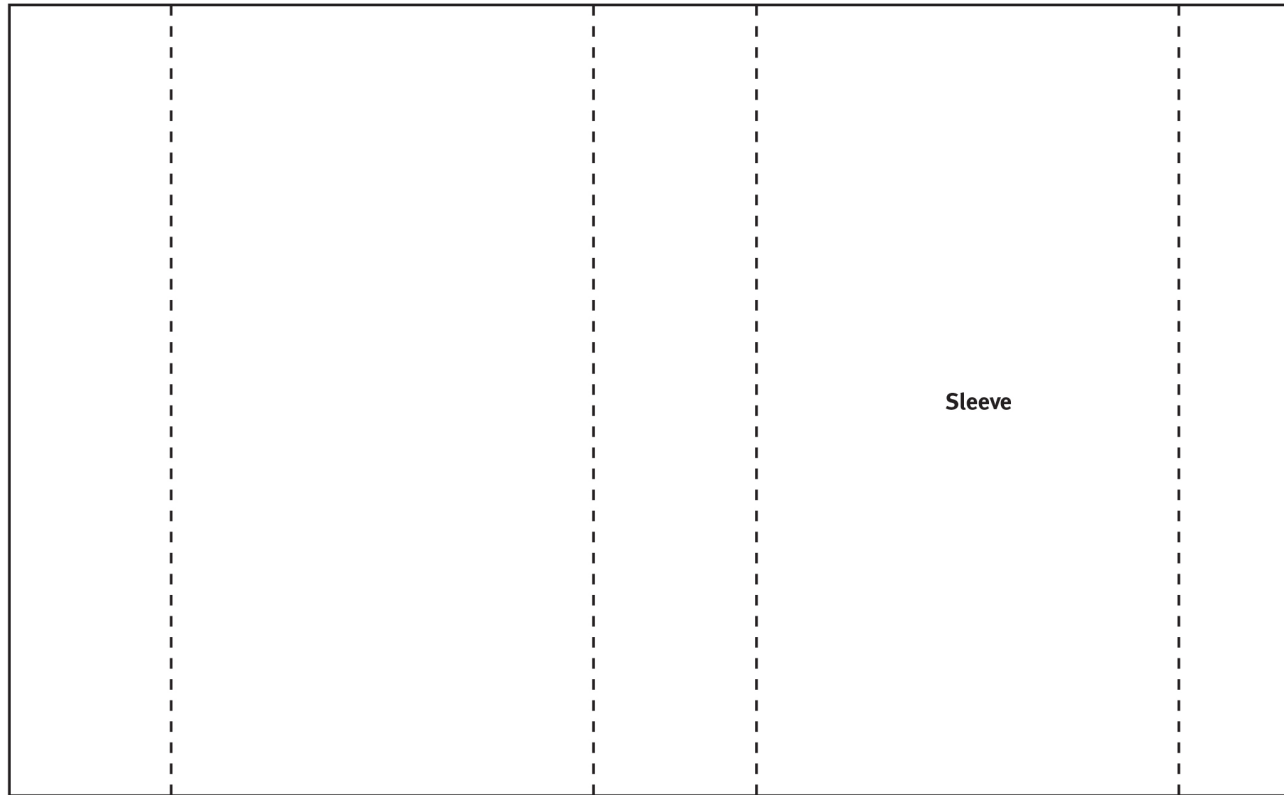
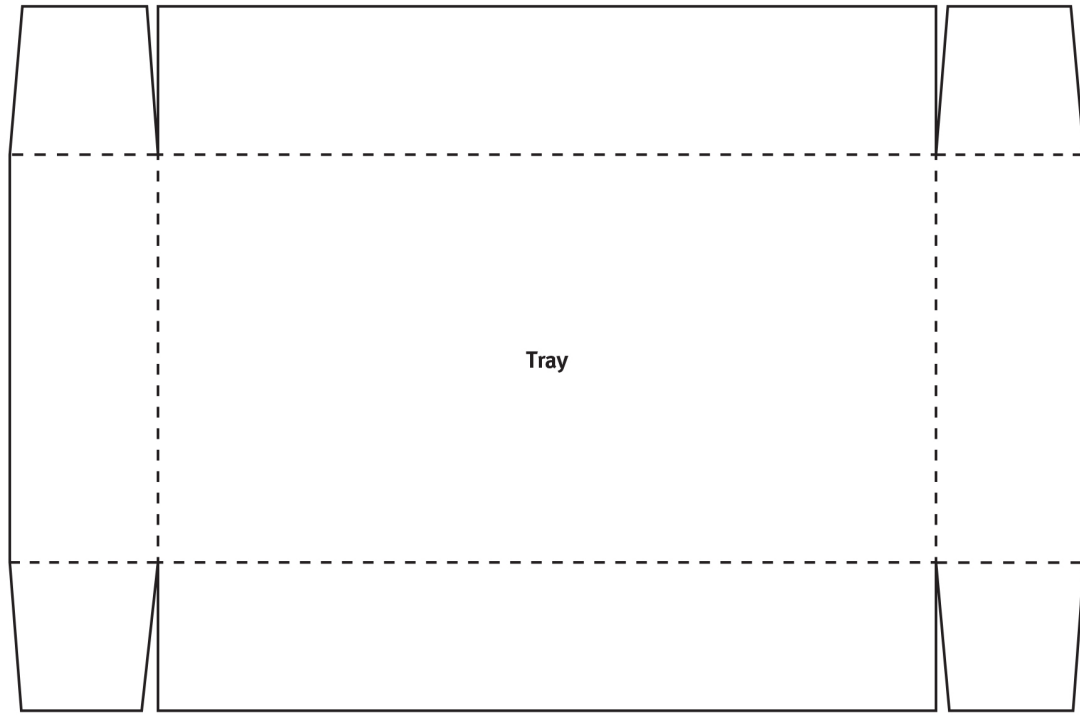


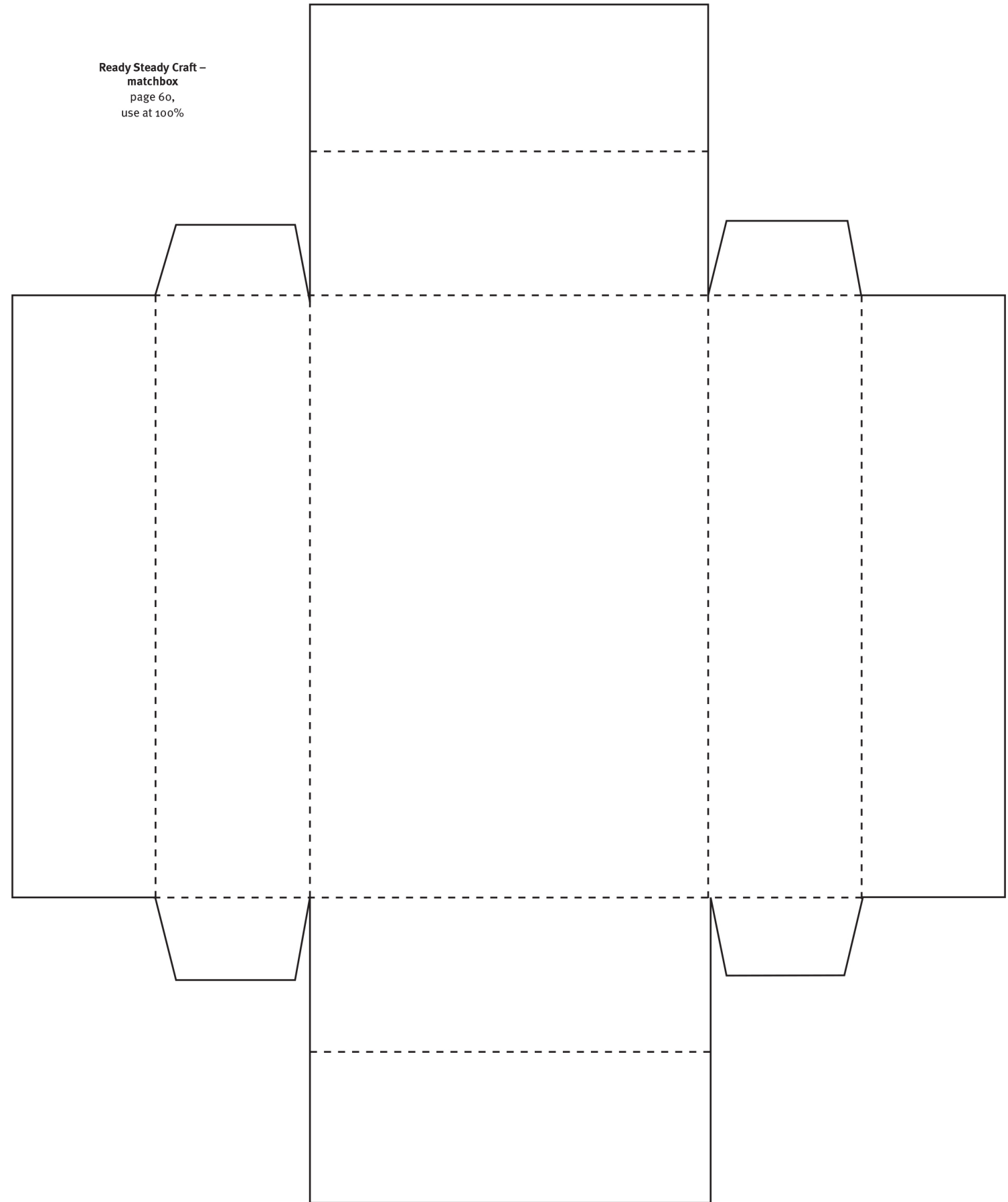
2



Scan N Cut – bat wreath  
page 28,  
use at 100%







Cut ———  
Mountain fold - - - - -  
Valley fold ·····

Cut ———  
Mountain fold - - - - -  
Valley fold ·····