

The stonewashed
finish of this yarn
adds a vintage
touch to your knits



MEET OUR DESIGNER

Sophie Jordan

"A large range of brilliant colours always gets me excited about Fair Isle. There's nothing like playing with wonderful shades to make a pattern really pop – I hope you like the set!"

Spring cool

The cotton yarn in this Fair Isle combo means you can wear this set all the way into spring! By **Sophie Jordan**.



IMPROVE YOUR SKILLS



FAIR ISLE
ST ST



SPORT
WEIGHT



3MM
3½MM

YOU WILL NEED

■ Scheepjes, Stone Washed (78% cotton, 27% acrylic, 50g/130m), 1 ball of each:

Yarn A Peridot (827)

Yarn B Turquoise (824)

Yarn C Morganite (834)

Yarn D Rhodochrosite (835)

Yarn E Lepidolite (830)

Yarn F Malachite (825)

■ A pair of 3mm needles

■ A pair of 3½mm needles

■ Stitch markers

For yarn stockists contact

Scheepjes www.scheepjes.com

TENSION

Yarn used knits as Sport to this tension:
27 sts and 30 rows to measure 10x10cm
(4x4in) over patt using 3½mm needles

MEASUREMENTS

Hat 53cm circumference

Mittens 18cm circumference, 13cm long

ABBREVIATIONS

See www.gathered.how

"These colours are ace!"

"I'm new to knitting but can't wait until I'm good enough to try Fair Isle like this. This set looks so funky!"

Emily Waite, Designer

Fair Isle doesn't always have to be wintry or Scandi-inspired. Sometimes thinking outside the box with your colours can deliver the prettiest of results. This hat and mitt set has been created with a Fair Isle repeat that is completed before any decreases are required, giving you the uninterrupted bliss of working with a rainbow of stonewashed shades.

HAT

Cast on 128 sts using 3mm needles and Yarn A.

Row 1 (WS) *K1tbl; rep from * to end.

Row 2 (RS) *K2, P2; rep from * to end.

Row 2 forms 2x2 rib.

Work in 2x2 rib for 7 more rows, ending with a WS row.

Inc row (RS) *K7, kfb; rep from * to end. [144 sts]

Change to 3½mm needles.

Next row Purl.

Work Rows 1-42 of Hat Chart. When Hat Chart is complete, continue in Yarn A only.

Next row (RS) *K6, k2tog; rep from * to end. [126 sts]

Next row Purl.

Next row *K4, k2tog; rep from * to end. [105 sts]

Next row Purl

Next row *K1, k2tog; rep from * to end. [70 sts]

Next row Purl.

Next row *K2tog; rep from * to end. [35 sts]

Thread yarn tail through remaining stitches pull up and fasten off.

TO MAKE UP

Sew back seam using backstitch.

Make a pompom using all 6 yarn colours and sew securely to the top of the hat.

FINGERLESS MITTENS

(MAKE 2)

Cast on 48 stitches using 3mm needles and Yarn A.

Work in 2x2 rib as for hat for 8 rows ending after a WS row.

Change to 3½mm needles.

Work Rows 1-14 of Mitten Chart.

When Mitten Chart is complete, continue in Yarn A only.

SHAPE THUMB

Next row (RS) K22, PM, M1, K4, M1, PM, K22. [50 sts]

Next row and every WS row (WS) Purl, slipping markers.

Next row and every RS row K22, sl sm, M1, K to sm, M1, sl sm, K22.

Repeat the last 2 rows until there are 16 sts between the two markers, ending with a RS row. [60 sts]

Next row P to sm, **cast off** the 16 sts between the markers, P to end. [44 sts]

Next row K21, (1 st remains on the RH needle before the thumb gap), K into the back of the first stitch on the LH needle, then the stitch that remains on the RH needle, take both sts off the needle, K22. [44 sts]

Next row Purl.

Work 8 rows in 2x2 rib.

Cast off.

Sew side seam using backstitch. 



These mittens are super-quick to knit. Each one takes no more than a day to finish completely.

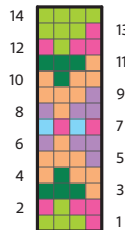
HOW TO USE OUR CHARTS

Start at the bottom right-hand corner. Read right-side rows from right to left and wrong-side rows from left to right. A row of squares represents a row of knitting.

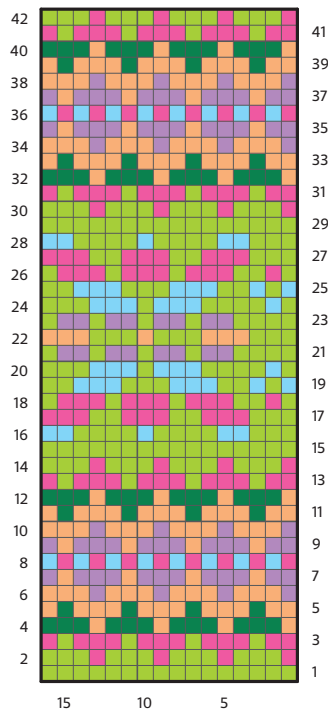
Key

- Yarn A
- Yarn B
- Yarn C
- Yarn D
- Yarn E
- Yarn F

Mitten Chart



Hat Chart



Keep your tension even but slightly loose when knitting Fair Isle to prevent bunching.

STEP-BY-STEP HOW TO KNIT FAIR ISLE



1 These images show what happens to the yarn that you carry over on the wrong side of the work. Work a stitch in the first colour as usual. To change colour, twist the two yarns together before working the next stitch.



2 Work the next stitch in the new colour as normal. When working alternating stitches of two colours, try and keep an even tension and do not pull the yarn too tight.



3 Change back to the original colour, not forgetting to twist the two yarns together before you work the stitch.



4 A completed row shows the yarn 'floats' carried across the back of the work. If you always keep the floats of one colour above the other colour, your work will look neater.