



TEMPLATES

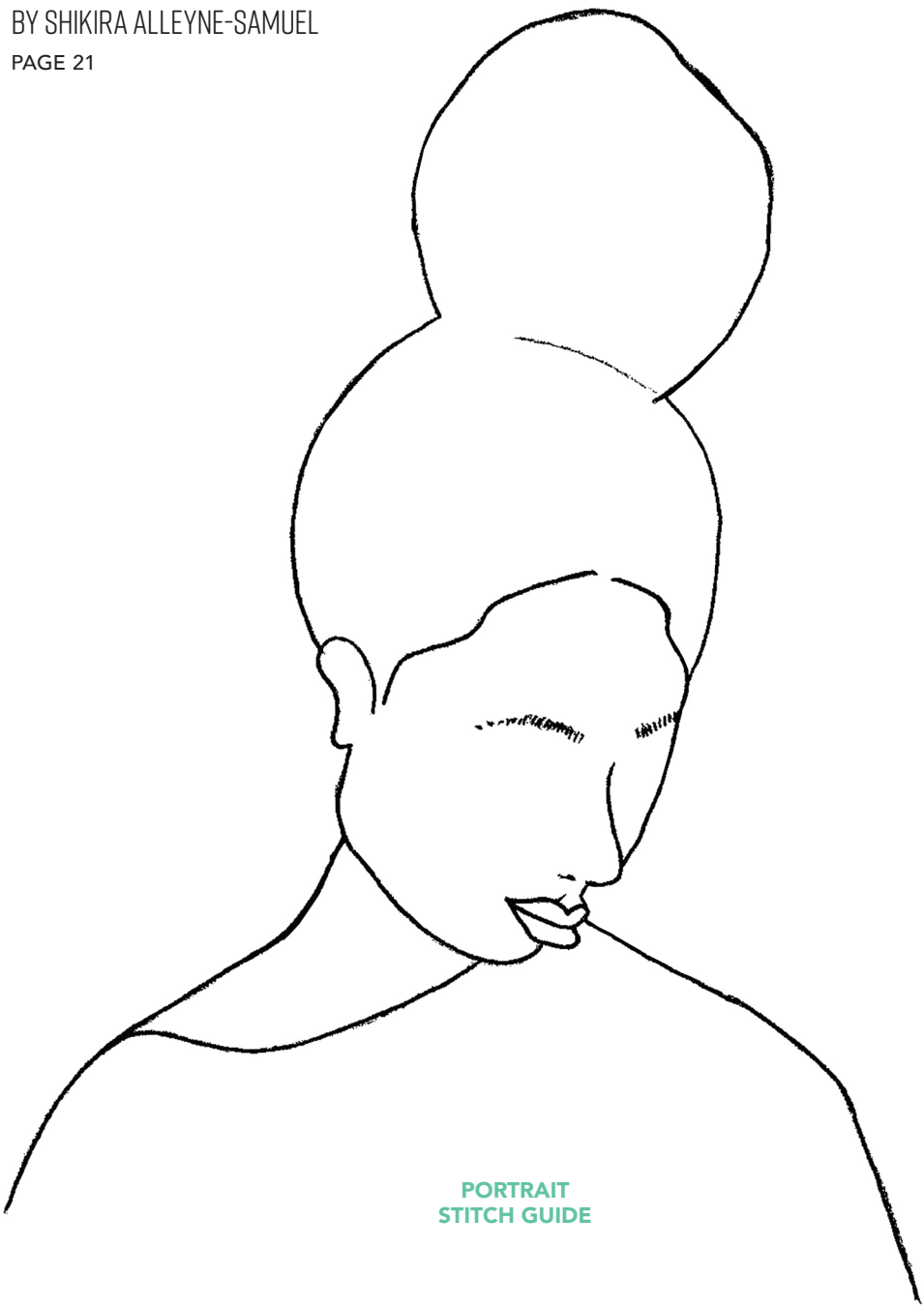
ISSUE 115

Thank you for making this project from *Mollie Makes*. We have requested specific permission from designers so that you can recreate and sell selected projects from this issue on the following conditions. Just look for this icon.  You can individually hand-make as many as you wish of our labelled projects, to sell either for yourself, your local event or to raise money for charity. You cannot sell in shops (online or otherwise) and you cannot go into mass production, which means you cannot manufacture in large quantities, especially by machine. Selling photocopies of any part of this magazine, its kits or supplements is prohibited. We don't mind if you make a copy of the templates for a friend but please do not make any part of the templates or instructions available to others through your website or a third party website, or copy it multiple times without our permission. Please respect one another's copyright.

EMBROIDERED PORTRAIT

BY SHIKIRA ALLEYNE-SAMUEL

PAGE 21

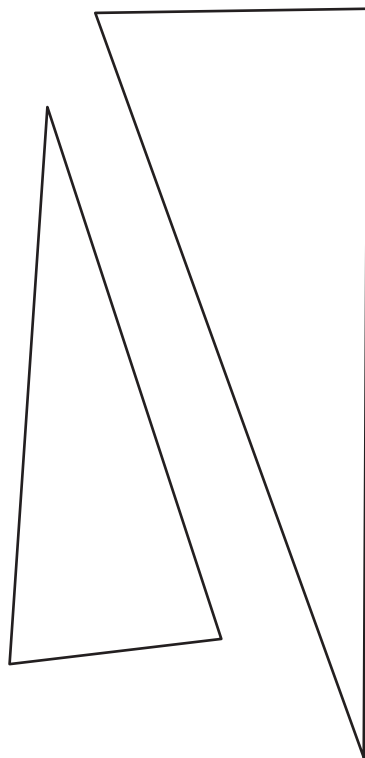


PORTRAIT
STITCH GUIDE

FLOWER
STITCH GUIDE




HEAD WRAP
CUT ONE OF EACH

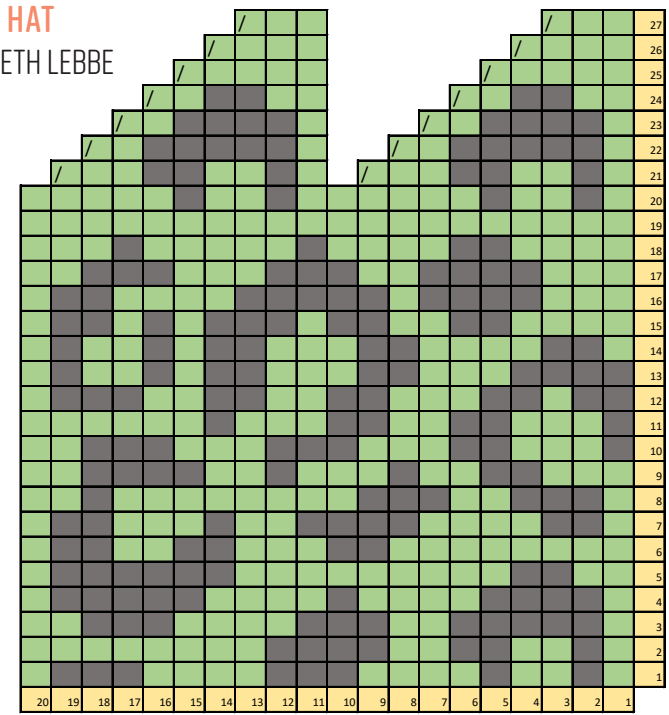


Thank you for making this project from *Mollie Makes*. We have requested specific permission from designers so that you can recreate and sell selected projects from this issue on the following conditions. Just look for this icon.  You can individually hand-make as many as you wish of our labelled projects, to sell either for yourself, your local event or to raise money for charity. You cannot sell in shops (online or otherwise) and you cannot go into mass production, which means you cannot manufacture in large quantities, especially by machine. Selling photocopies of any part of this magazine, its kits or supplements is prohibited. We don't mind if you make a copy of the templates for a friend but please do not make any part of the templates or instructions available to others through your website or a third party website, or copy it multiple times without our permission. Please respect one another's copyright.

LETTERING
CUT ONE OF EACH

I REALLY
REALLY
LIKE
YOU

Thank you for making this project from *Mollie Makes*. We have requested specific permission from designers so that you can recreate and sell selected projects from this issue on the following conditions. Just look for this icon.  You can individually hand-make as many as you wish of our labelled projects, to sell either for yourself, your local event or to raise money for charity. You cannot sell in shops (online or otherwise) and you cannot go into mass production, which means you cannot manufacture in large quantities, especially by machine. Selling photocopies of any part of this magazine, its kits or supplements is prohibited. We don't mind if you make a copy of the templates for a friend but please do not make any part of the templates or instructions available to others through your website or a third party website, or copy it multiple times without our permission. Please respect one another's copyright.






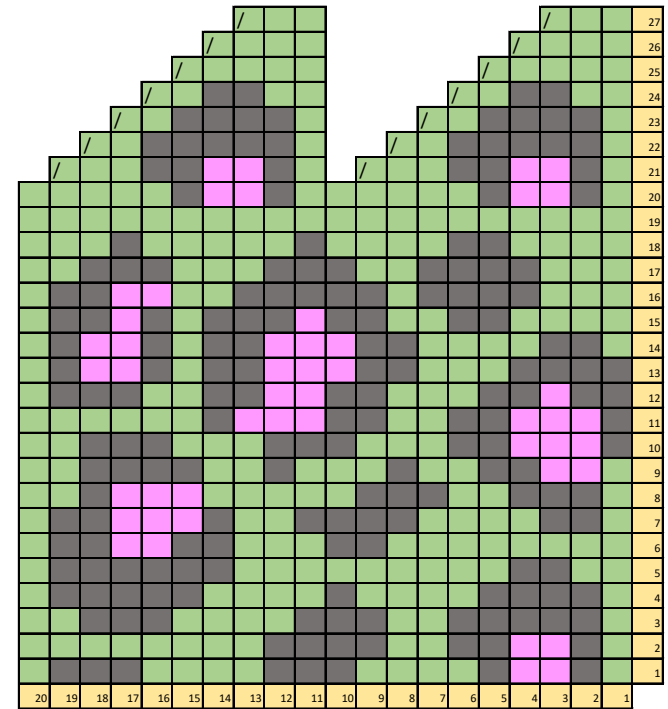
-  YARN A
-  YARN B
-  K2TOG

CHART 1




-  YARN A
-  YARN B
-  K2TOG
-  YARN C

CHART 2

WALL HANGING

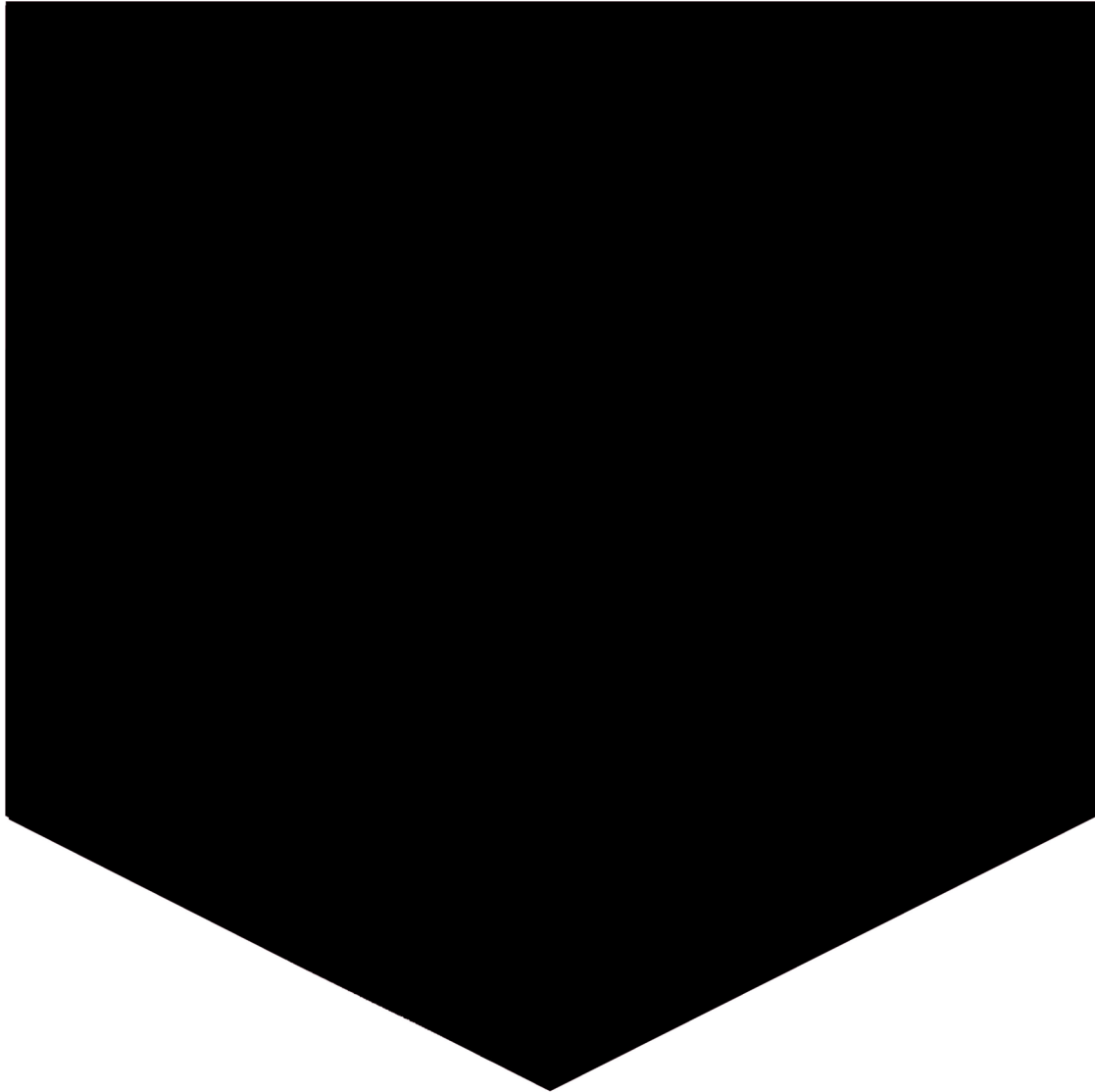
BY HAPPY FABRIC

PAGE 81

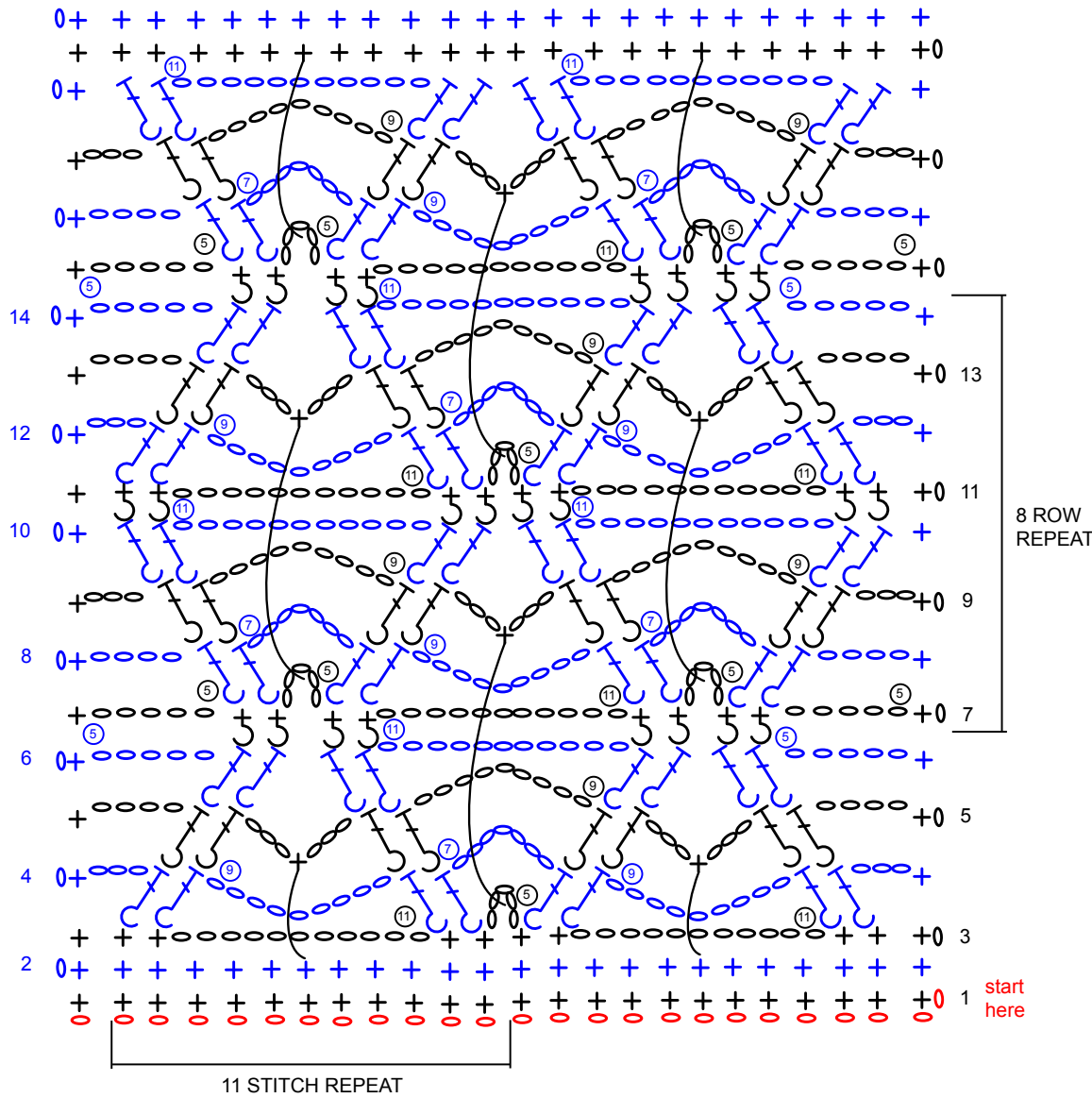
Photocopy at 200%










BANNER

CUT ONE



Thank you for making this project from *Mollie Makes*. We have requested specific permission from designers so that you can recreate and sell selected projects from this issue on the following conditions. Just look for this icon.  You can individually hand-make as many as you wish of our labelled projects, to sell either for yourself, your local event or to raise money for charity. You cannot sell in shops (online or otherwise) and you cannot go into mass production, which means you cannot manufacture in large quantities, especially by machine. Selling photocopies of any part of this magazine, its kits or supplements is prohibited. We don't mind if you make a copy of the templates for a friend but please do not make any part of the templates or instructions available to others through your website or a third party website, or copy it multiple times without our permission. Please respect one another's copyright.



| | | |
|--|--|--|
|  = BPdc |  = FPdc |  = Sc |
|  = BPdc |  = FPdc |  = Sc below |
|  = Ch |  = FPsc | |
|  = Ch count | | |

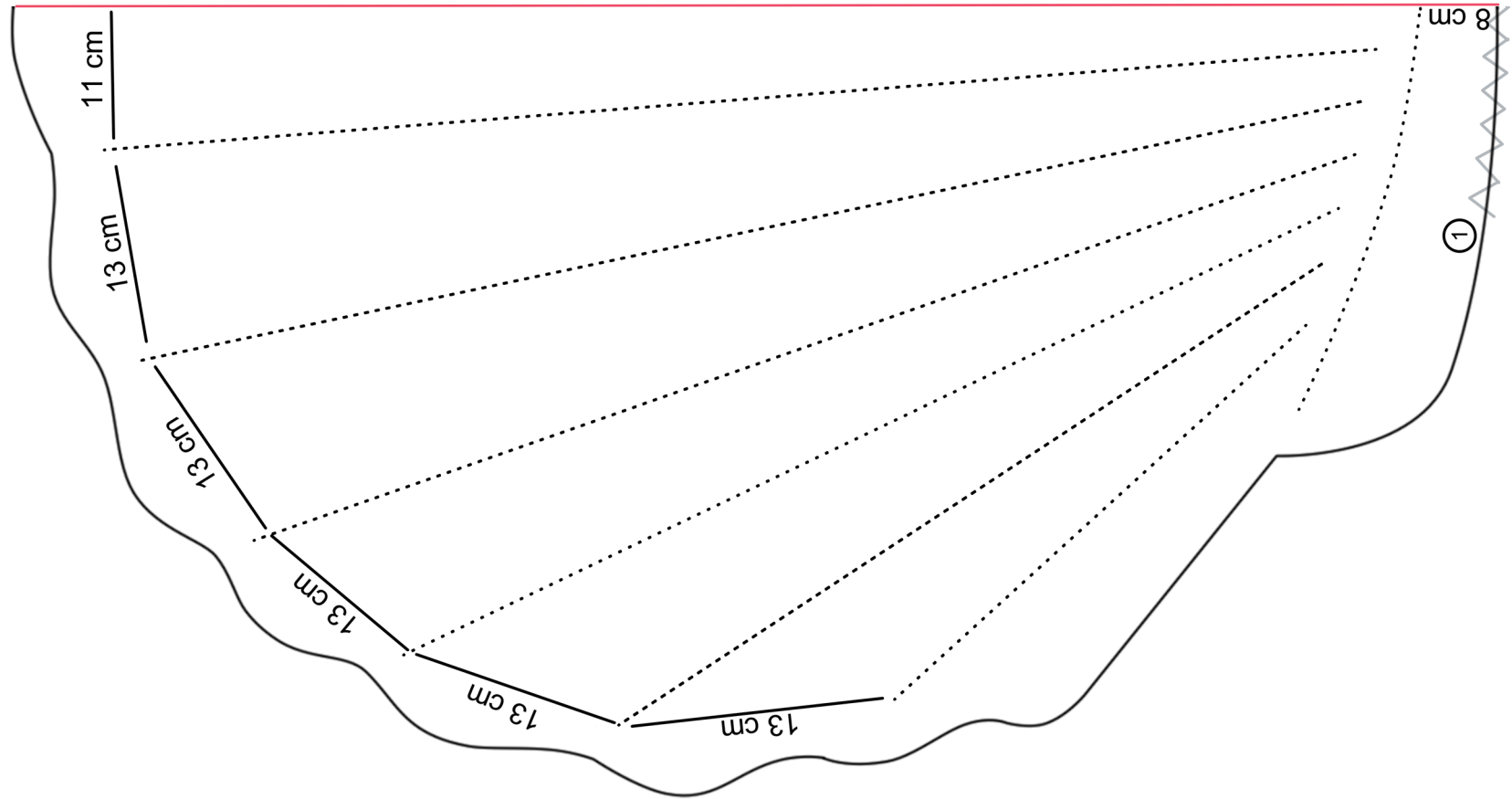
Thank you for making this project from *Mollie Makes*. We have requested specific permission from designers so that you can recreate and sell selected projects from this issue on the following conditions. *Mollie Makes* (ISSN 20460228) (USPS 20517 Christmas 2019 is published 13 times a year (monthly, with a Christmas issue in October) by Immediate Media Company Bristol Ltd., Eagle House, Colston Avenue, Bristol, BS1 4ST United Kingdom. Distributed in the U.S. by NPS Media Group, 2 Corporate Dr., Suite 945, Shelton, CT 06484. Periodical Postage paid at Shelton, CT and additional mailing offices. POSTMASTER: Send address change to *Mollie Makes*, Immediate Media, 2900 Veterans Highway, Bristol, PA 19007, USA or a third party website, or copy it multiple times without our permission. Please respect one another's copyright.

SHELL PLAYMAT

BY MARIA BUDINA 

PAGE 70





Scale up 400%



PLAYMAT

CUT TWO

JOIN PATTERN PIECES ALONG
THE RED GUIDELINE

-  QUILT LINE
-  MIDDLE LINE
-  CUT LINE
-  INVISIBLE SEAM STITCH LINE

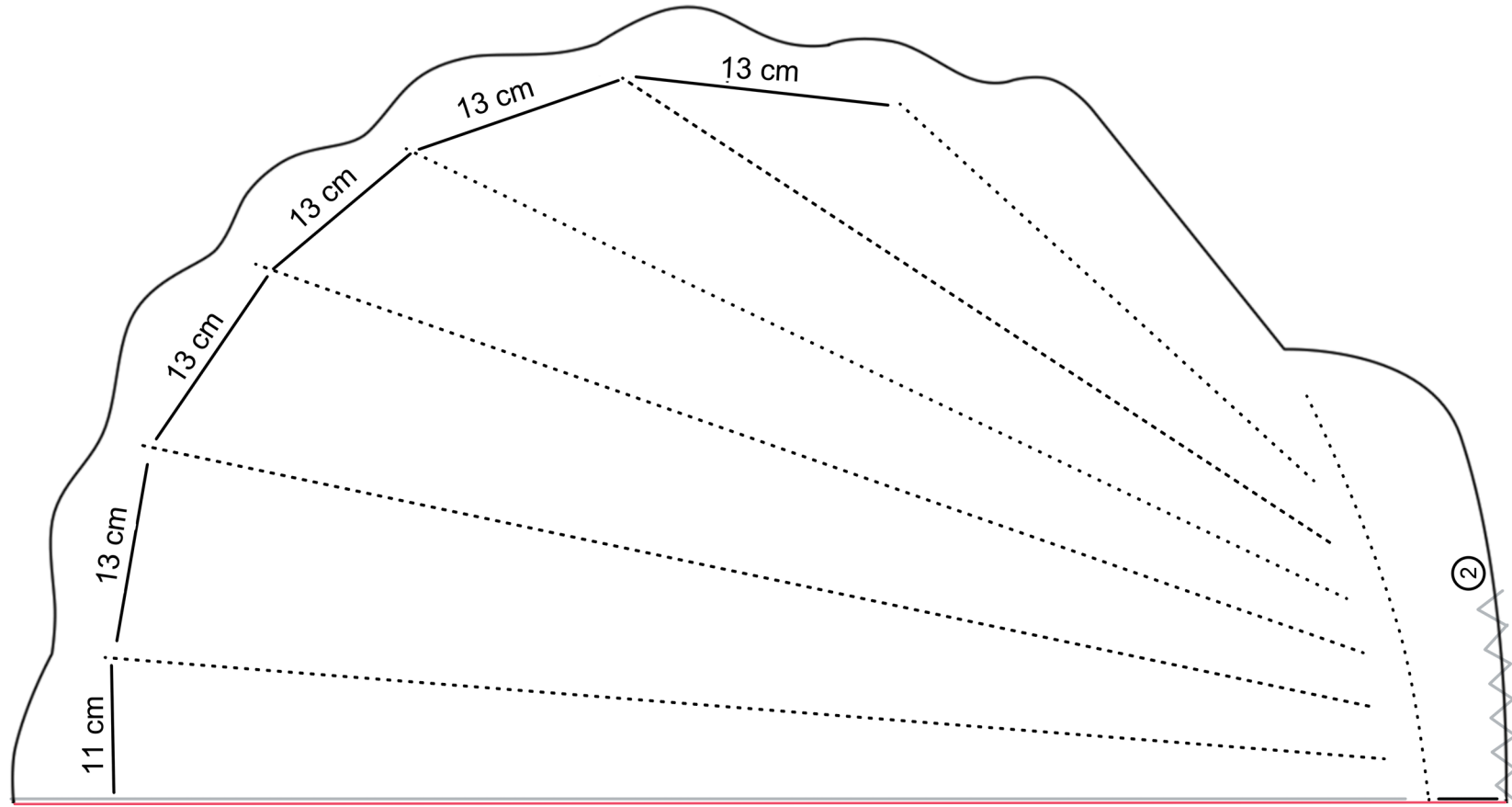
Thank you for making this project from *Mollie Makes*. We have requested specific permission from designers so that you can recreate and sell selected projects from this issue on the following conditions. Just look for this icon.  You can individually hand-make as many as you wish of our labelled projects, to sell either for yourself, your local event or to raise money for charity. You cannot sell in shops (online or otherwise) and you cannot go into mass production, which means you cannot manufacture in large quantities, especially by machine. Selling photocopies of any part of this magazine, its kits or supplements is prohibited. We don't mind if you make a copy of the templates for a friend but please do not make any part of the templates or instructions available to others through your website or a third party website, or copy it multiple times without our permission. Please respect one another's copyright.

SHELL PLAYMAT

BY MARIA BUDINA 

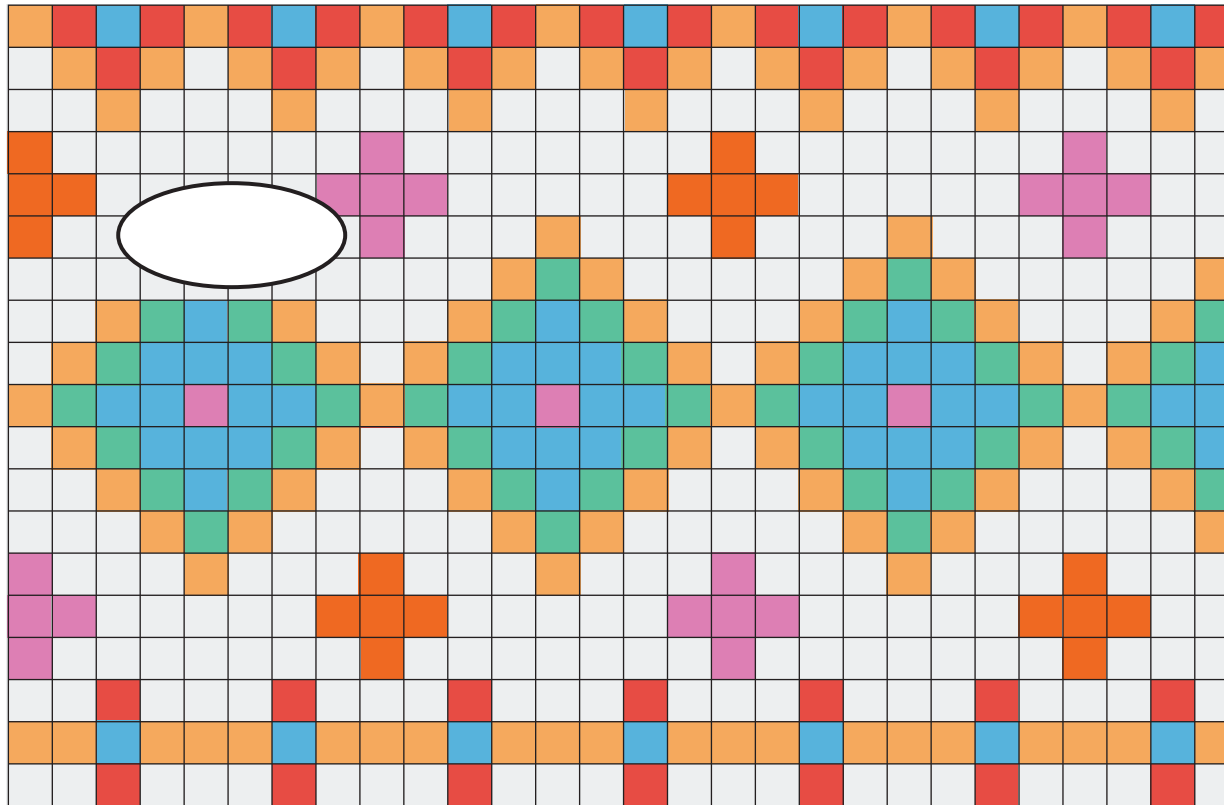
PAGE 70

Scale up 400%



Thank you for making this project from *Mollie Makes*. We have requested specific permission from designers so that you can recreate and sell selected projects from this issue on the following conditions. Just look for this icon.  You can individually hand-make as many as you wish of our labelled projects, to sell either for yourself, your local event or to raise money for charity. You cannot sell in shops (online or otherwise) and you cannot go into mass production, which means you cannot manufacture in large quantities, especially by machine. Selling photocopies of any part of this magazine, its kits or supplements is prohibited. We don't mind if you make a copy of the templates for a friend but please do not make any part of the templates or instructions available to others through your website or a third party website, or copy it multiple times without our permission. Please respect one another's copyright.

RIGHT-HAND GLOVE EMBROIDERY CHART



LEFT-HAND GLOVE EMBROIDERY CHART

