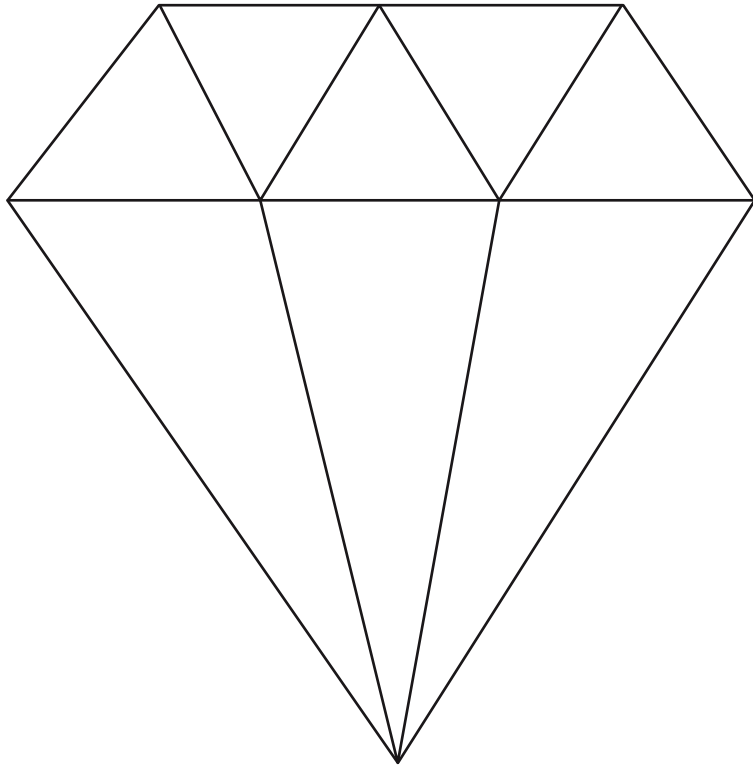




TEMPLATES
ISSUE 33

SEQUIN ELBOW PATCHES

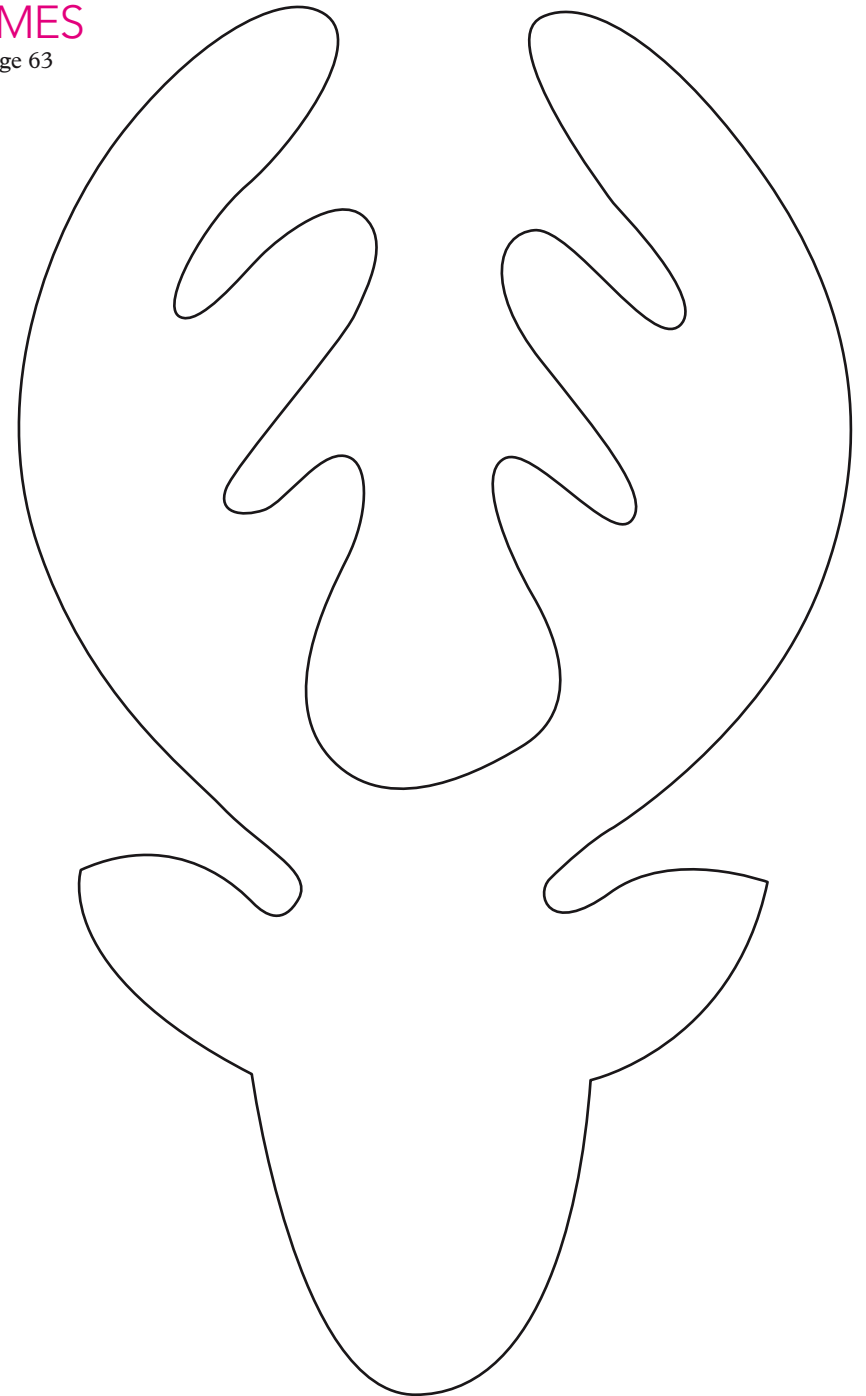
By Leanne Garrity Page 16



REINDEER FRAMES

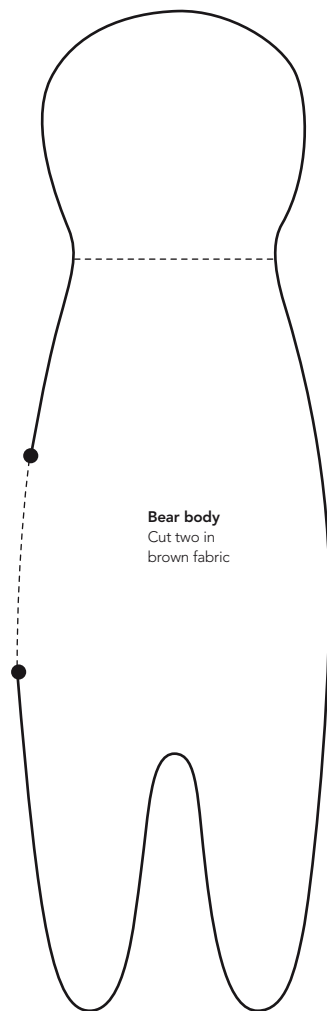
By Kirsty Anderson Page 63

Photocopy at 100% and
also at 85% and 75%



PATCHWORK STOCKING AND SCANDI BEAR

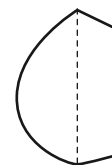
By Tone Finnanger Page 36



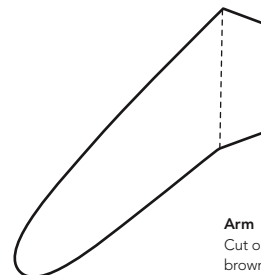
Collar
Cut one in fabric



Ear
Cut two in brown fabric



Nose
Cut one in brown fabric



Arm
Cut one in brown fabric



↑ Add 30cm in height from the dashed line ↑

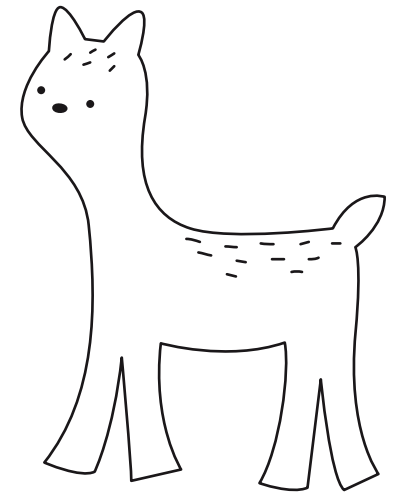
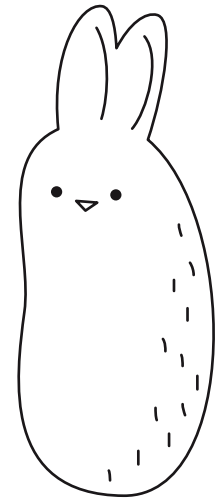
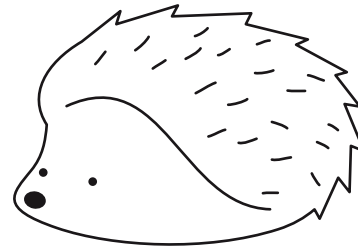
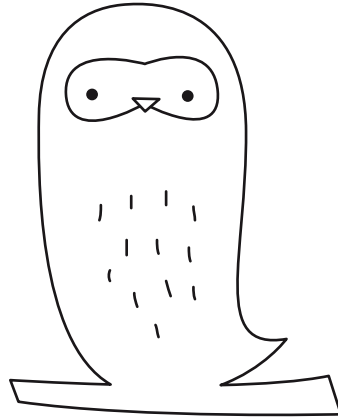
Stocking
Cut two

PATCHWORK STOCKING AND SCANDI BEAR

By Tone Finnanger Page 36

MUG RUGS

By Mollie Johanson Page 67



RETRO TREE DECORATIONS

By Samantha Stas Page 74

