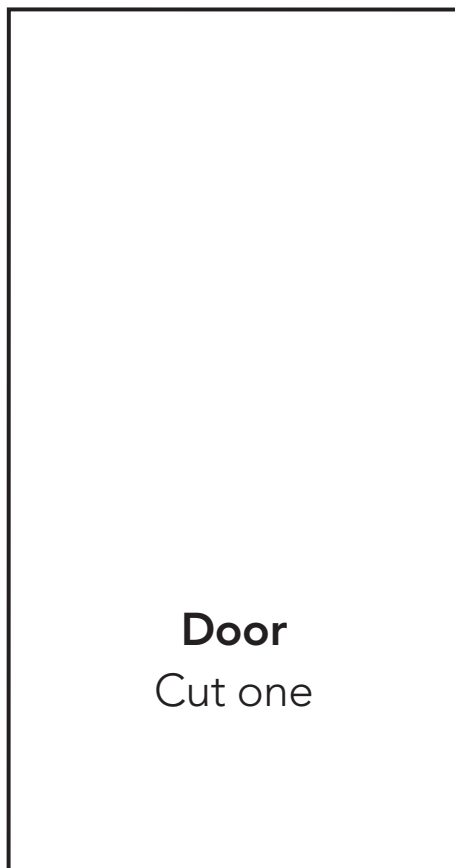
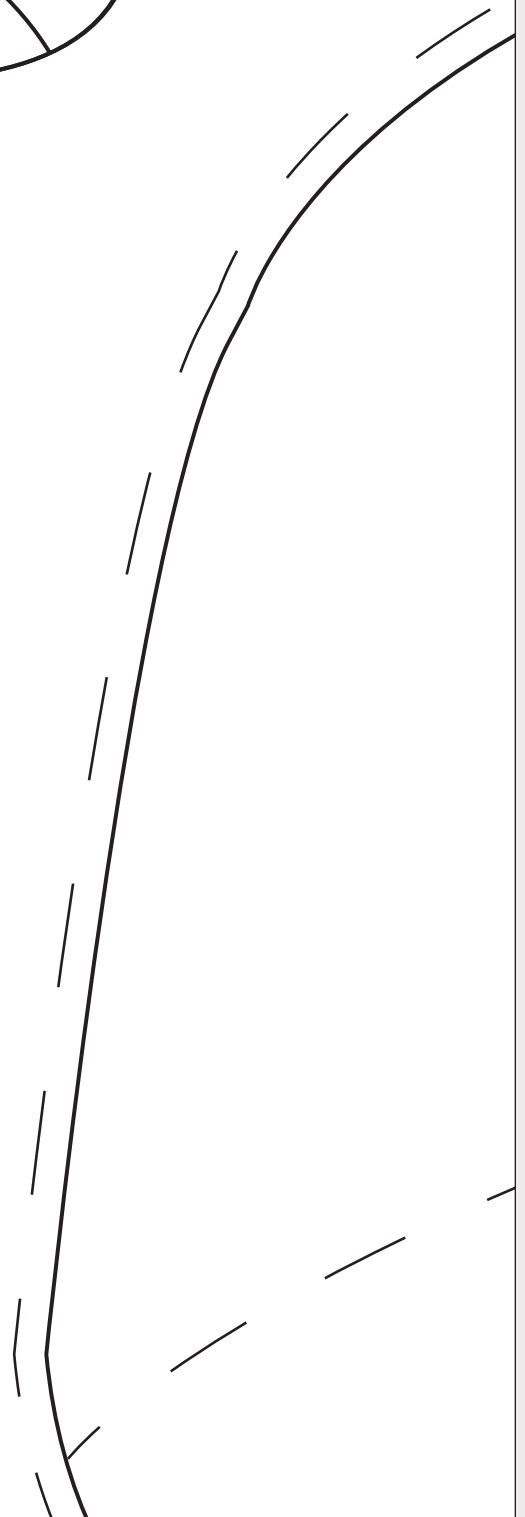


How the parts fit together



Door
Cut one





Seam allowance

The diagram shows a solid curved line representing the seam allowance. Above this line, there are several short, parallel horizontal dashes that follow the curve of the line, indicating the width of the seam allowance.

Patterned fabric 1

Cut one

*Place this pattern piece this way up and
wrong side of fabric 1*

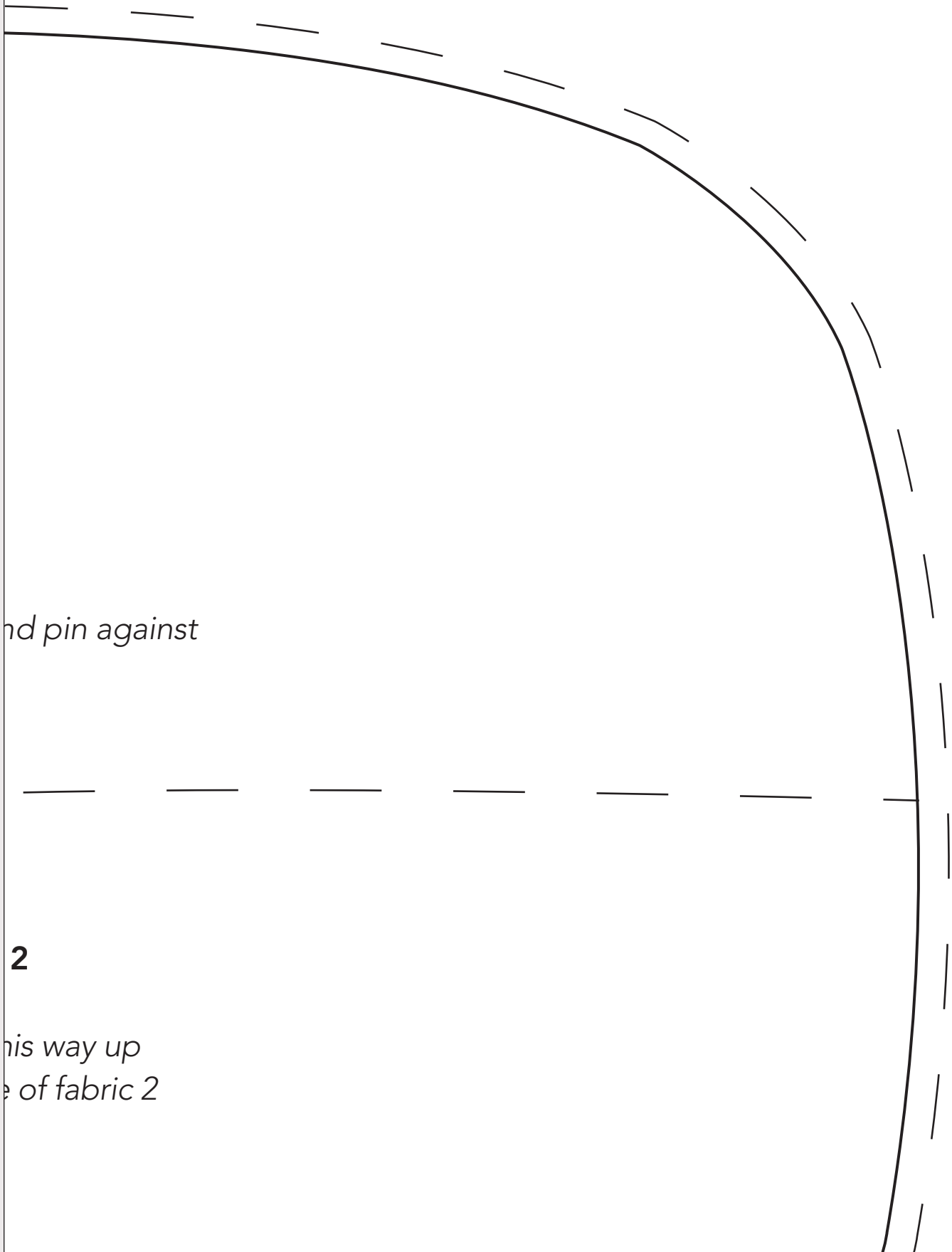


Patterned fabric 2

The diagram shows a dashed curved line representing the seam allowance. Above this line, there are several short, parallel horizontal dashes that follow the curve of the line, indicating the width of the seam allowance.

Cut one

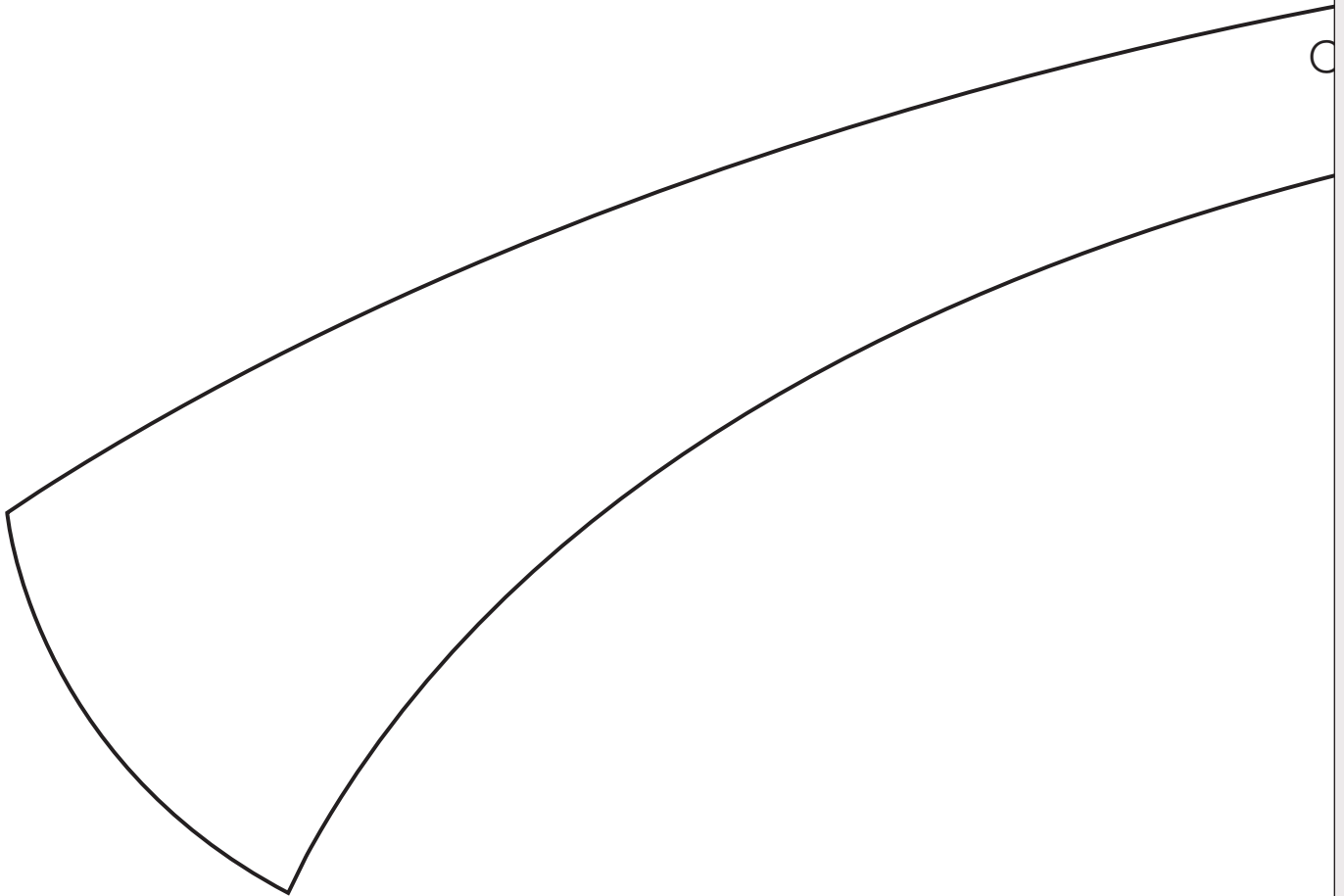
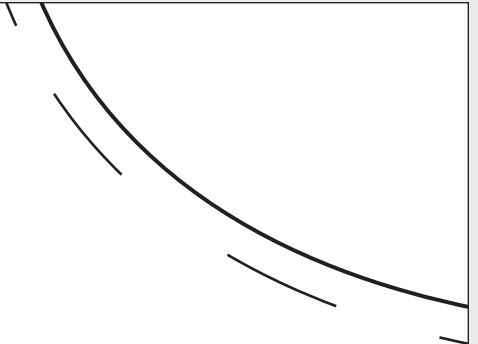
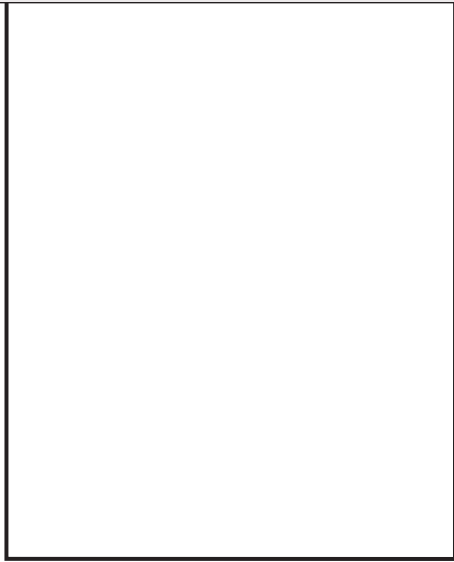
*Place this pattern piece this way up and
pin against wrong side*



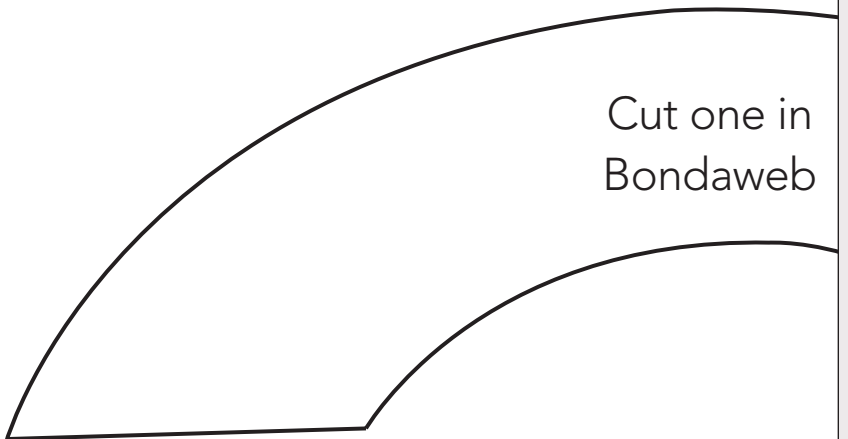
nd pin against

2

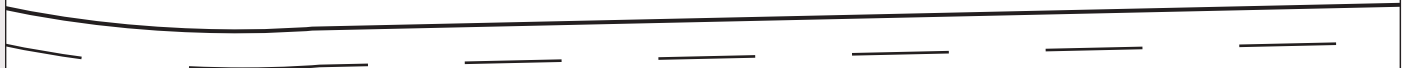
his way up
e of fabric 2



0

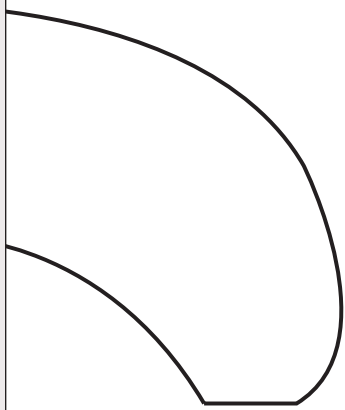


Cut one in
Bondaweb



Cut one in Bondaweb

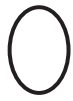
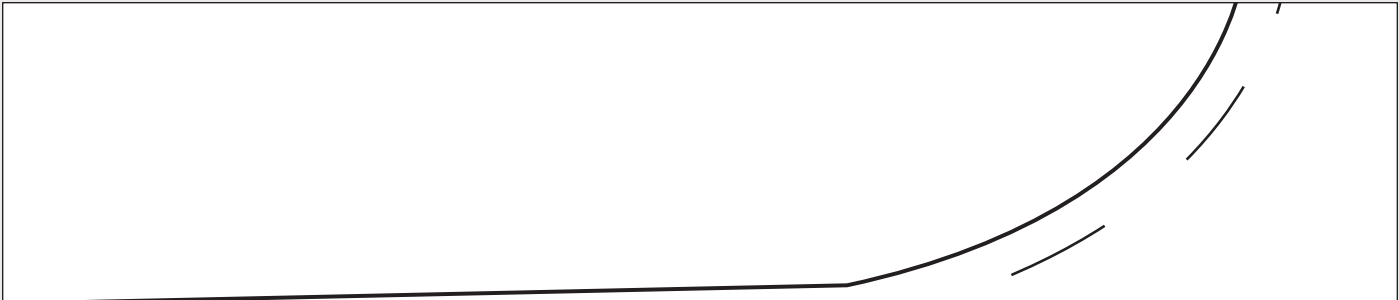
Cut one in Bondaweb



Wheel trim
Cut two

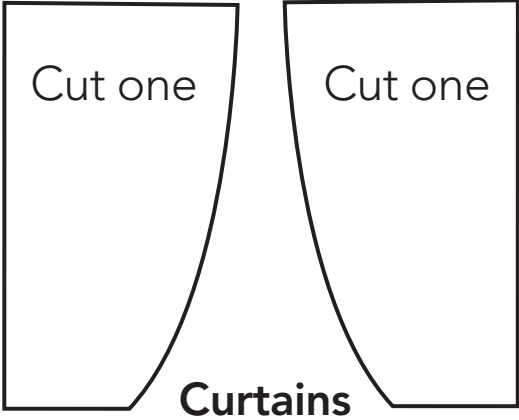


W
Cu



Doorknob

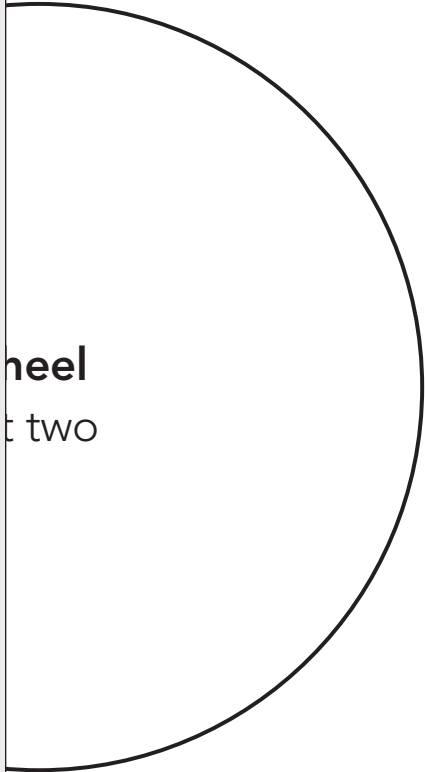
Cut one



Cut one

Cut one

Curtains

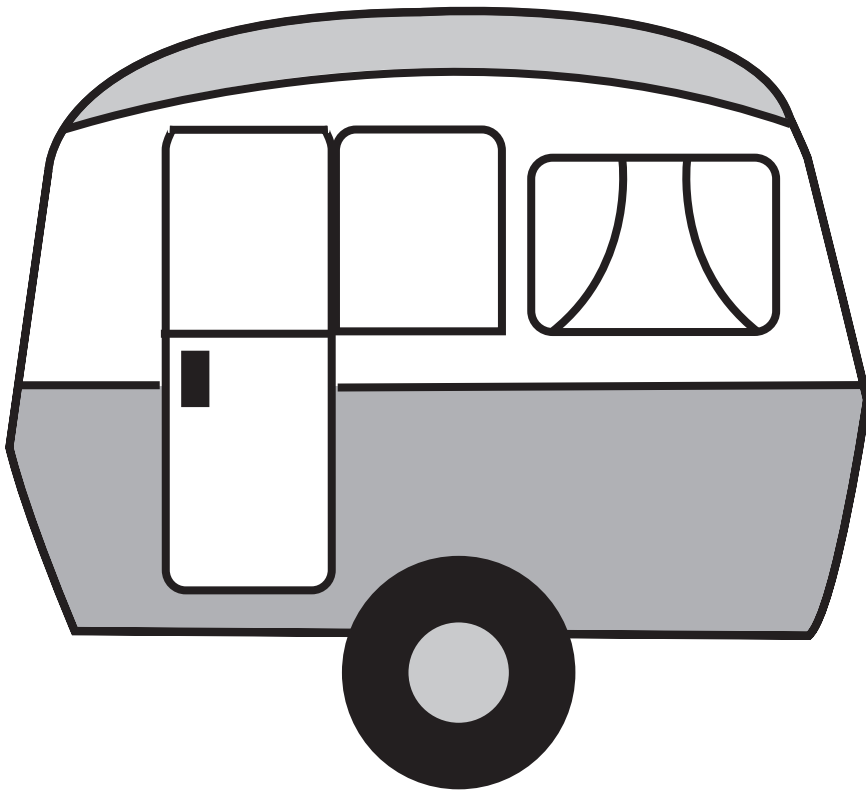


heel
t two



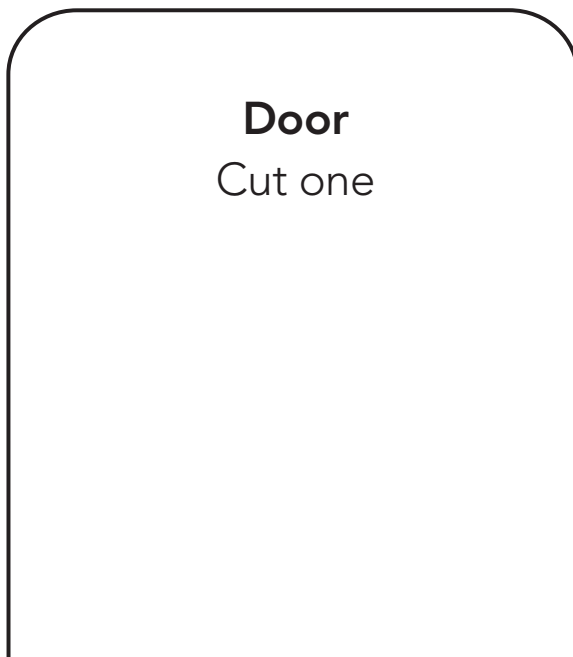
White felt

Cut one

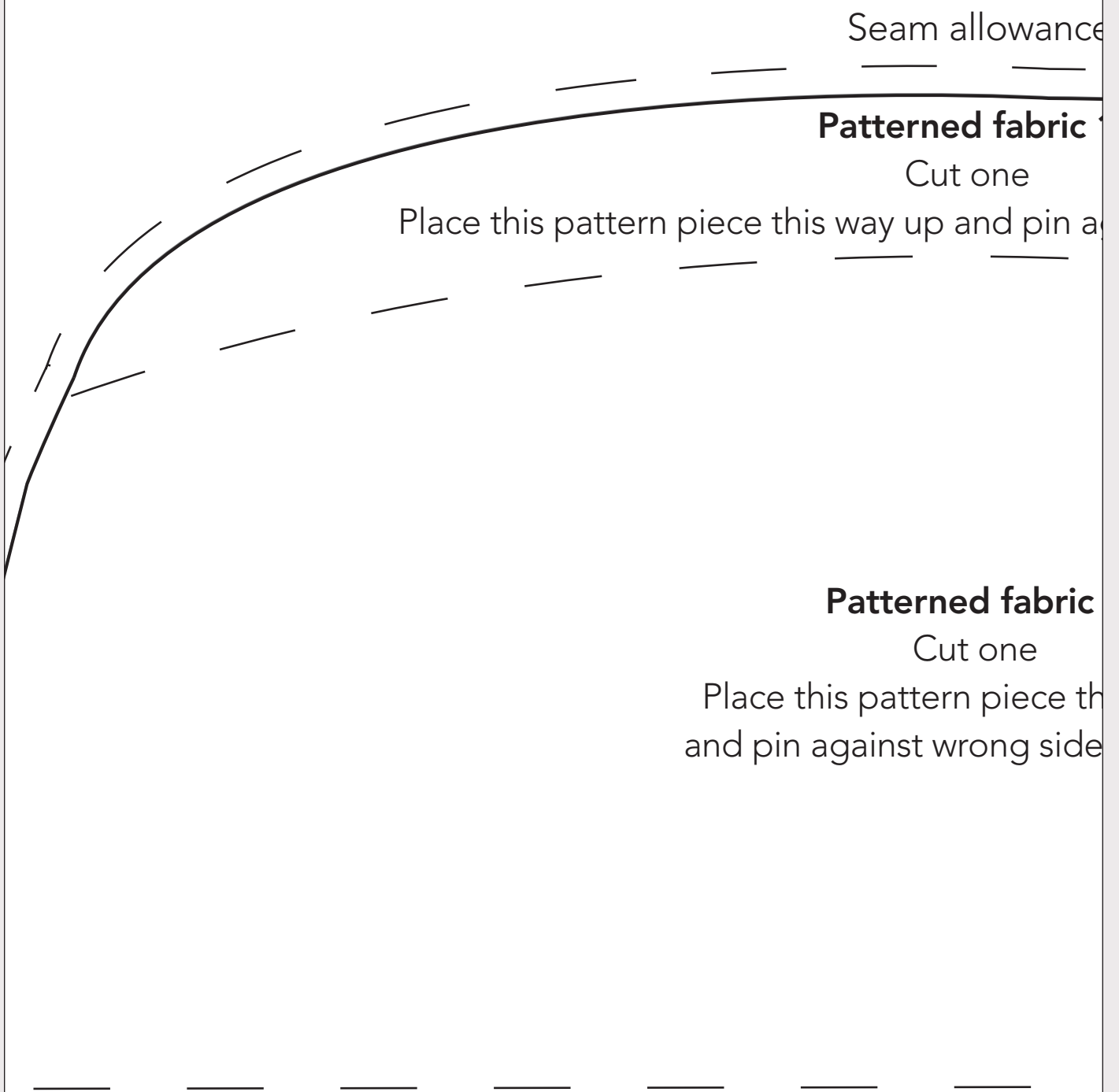


CARAVAN CU
BY SALLY ROYD
PAGE 52

How the parts fit together



SHIONS
HOUSE

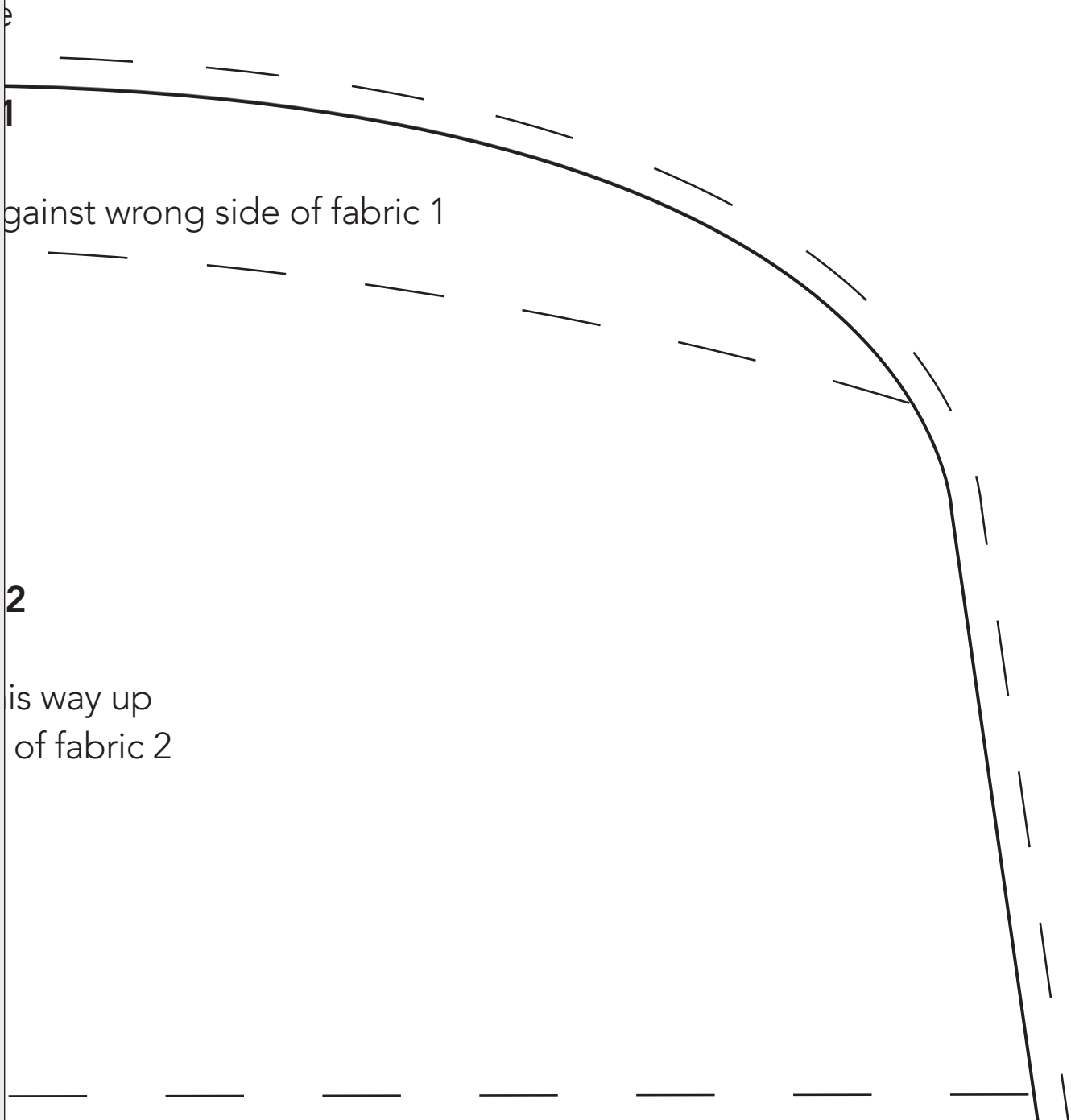


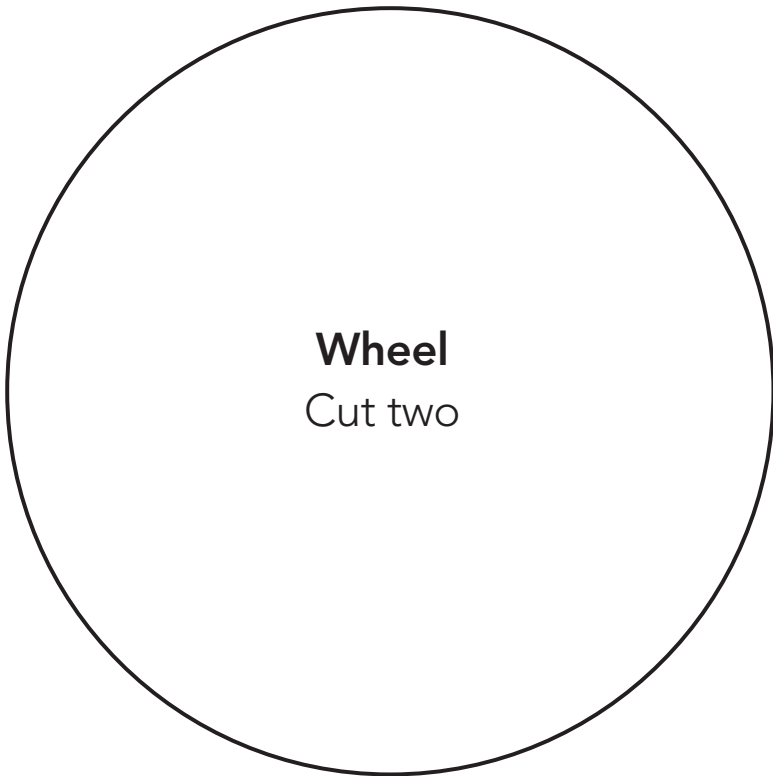
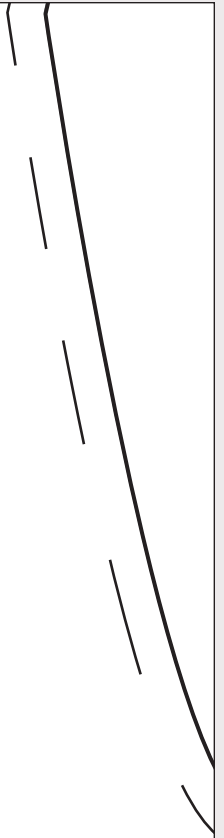
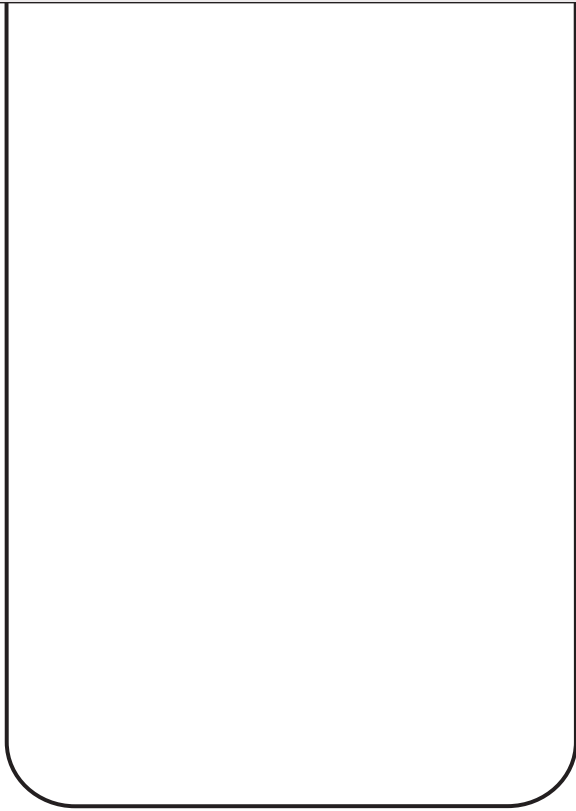
Mollie
MAKES

QUILTING

PATCHWORK • APPLIQUÉ • GIFTS • HOME DÉCOR

Use these templates to make
the three caravan cushions.





Doorknob

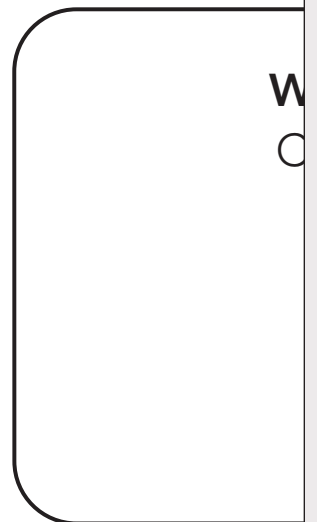
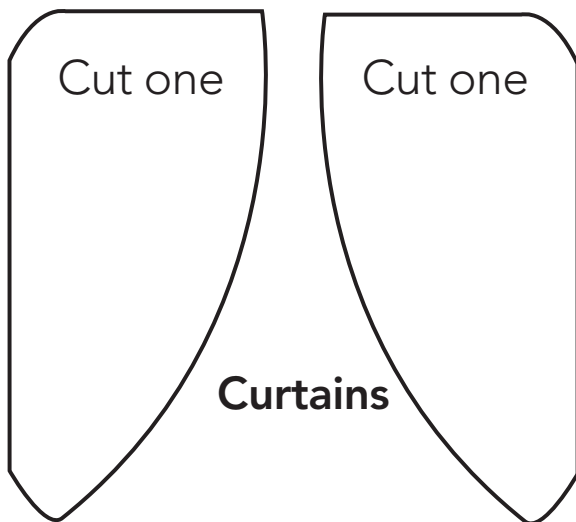
Cut one



Patterned fabric

Cut one

Place this pattern piece th
and pin against wrong side

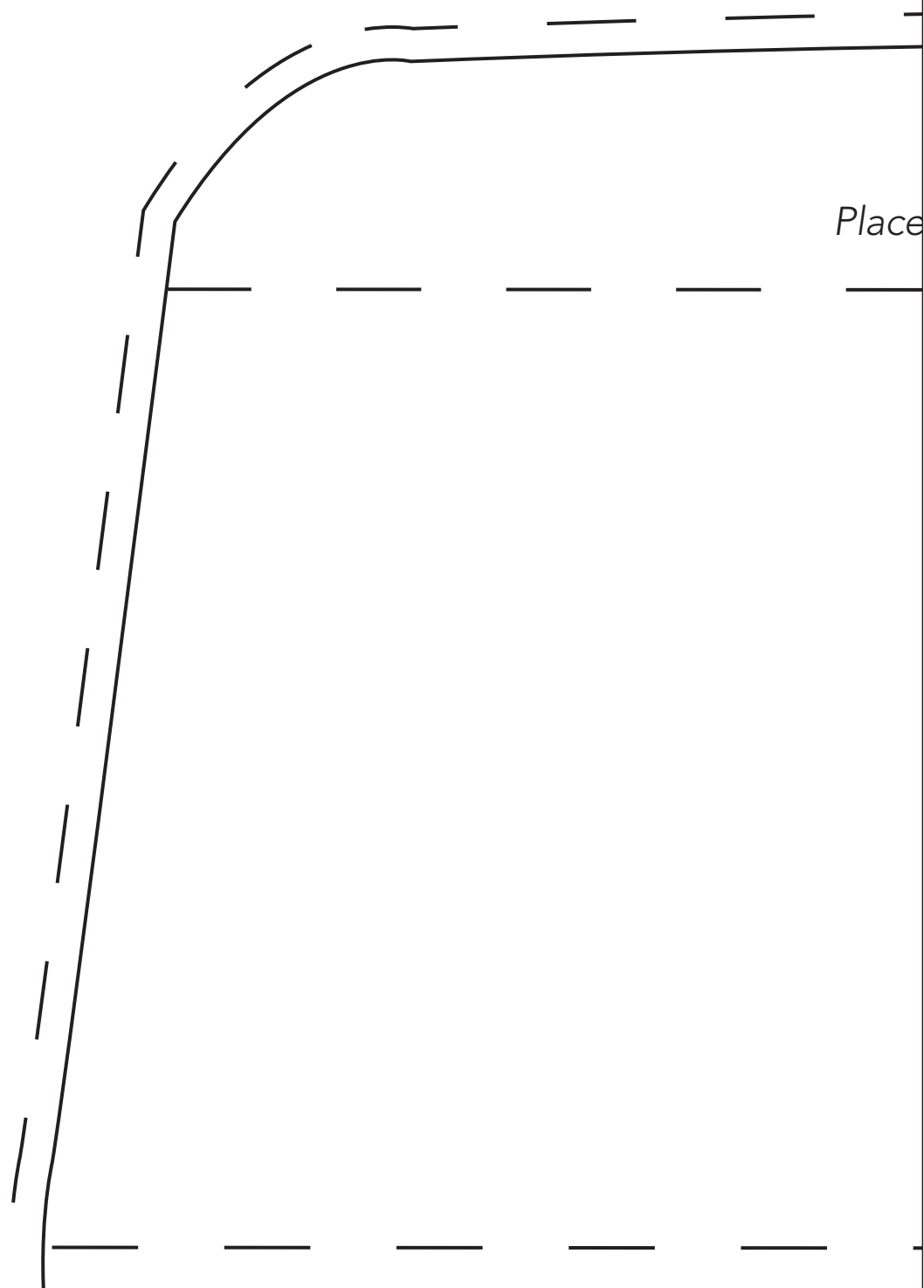


3

is way up
of fabric 3

Window
Cut one

Door
Cut one



Place

Seam allowance

Patterned fabric 1

Cut one

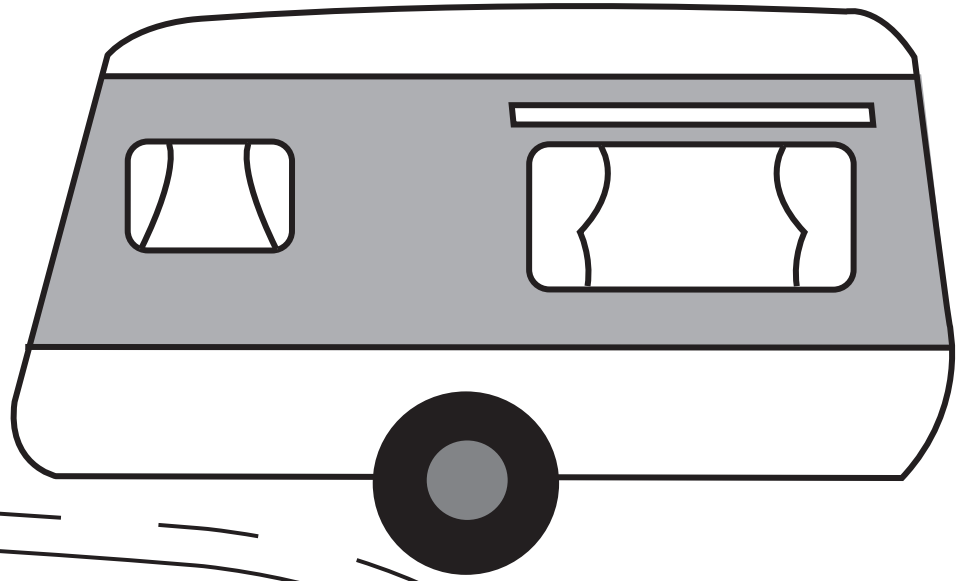
this pattern piece this way up and pin against wrong side of fabric 1

Patterned fabric 2

Cut one

*Place this pattern piece this way up
and pin against wrong side of fabric 2*

How the parts fit together





Window
Cut one

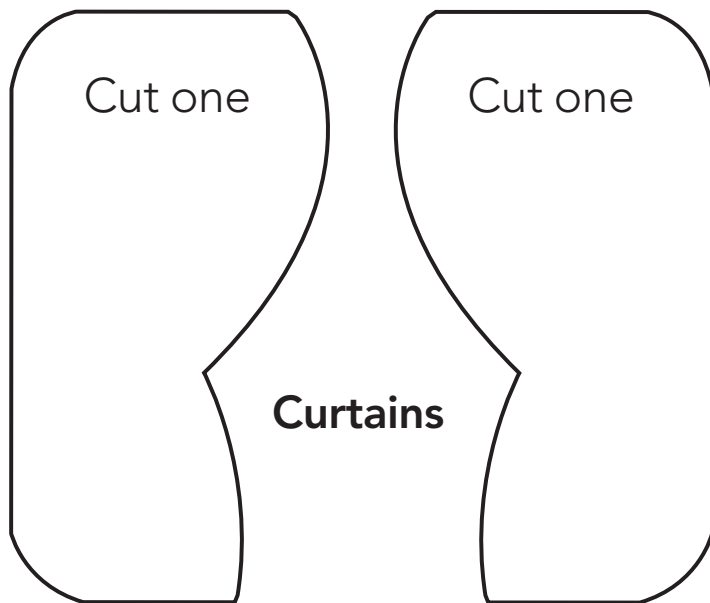


Canopy
Cut one

Patterned fabric 3

Cut one

*Place this pattern piece this way up
and pin against wrong side of fabric 3*



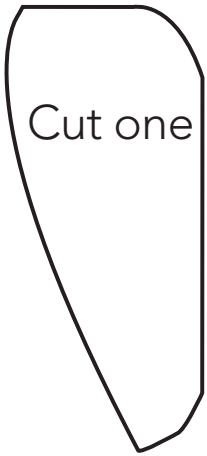
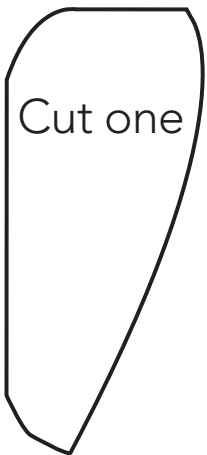
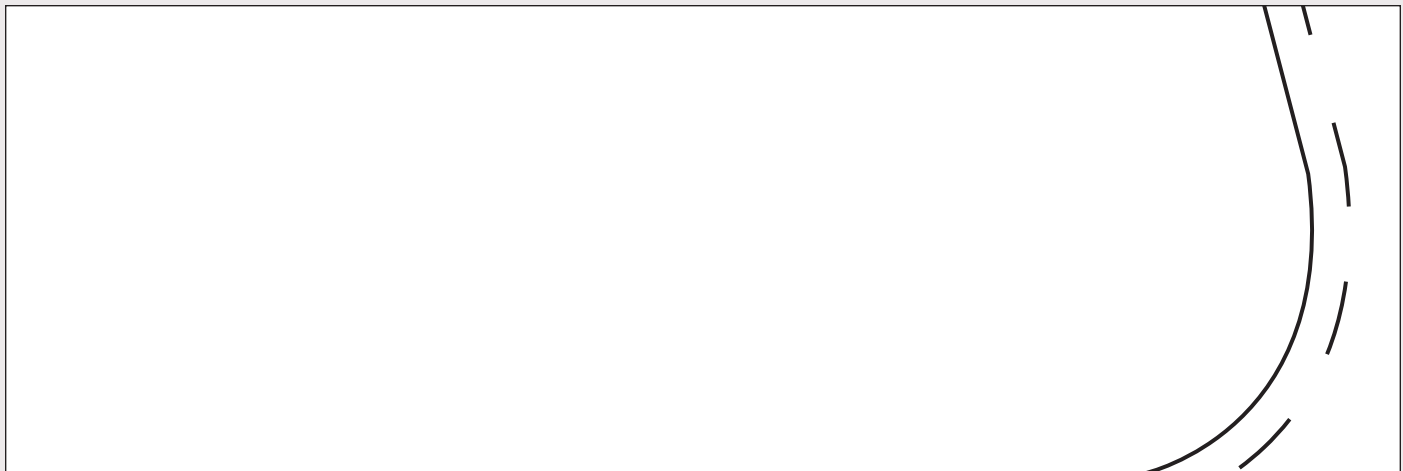
Whe
Cut

Mollie **QUILTING**
MAKES PATCHWORK • APPLIQUE • GIFTS • HOME DÉCOR

Thank you for making this project from *Mollie Makes Quilting*. The copyright for these templates belongs to the originators of the project. They work hard to create projects for you to make and love, so please don't re-sell or distribute their work without permission from *Mollie Makes*. We don't mind if you make a copy for a friend but please don't make any part of the templates or instructions available to others through your website or a third-party website, or copy it multiple times without our permission. Please pass on this information if you make a copy for a friend. Copyright law protects creative work, and unauthorised copying is illegal. We appreciate your help.

WWW.MOLLIEMAKES.COM

W
Cu



Curtains

