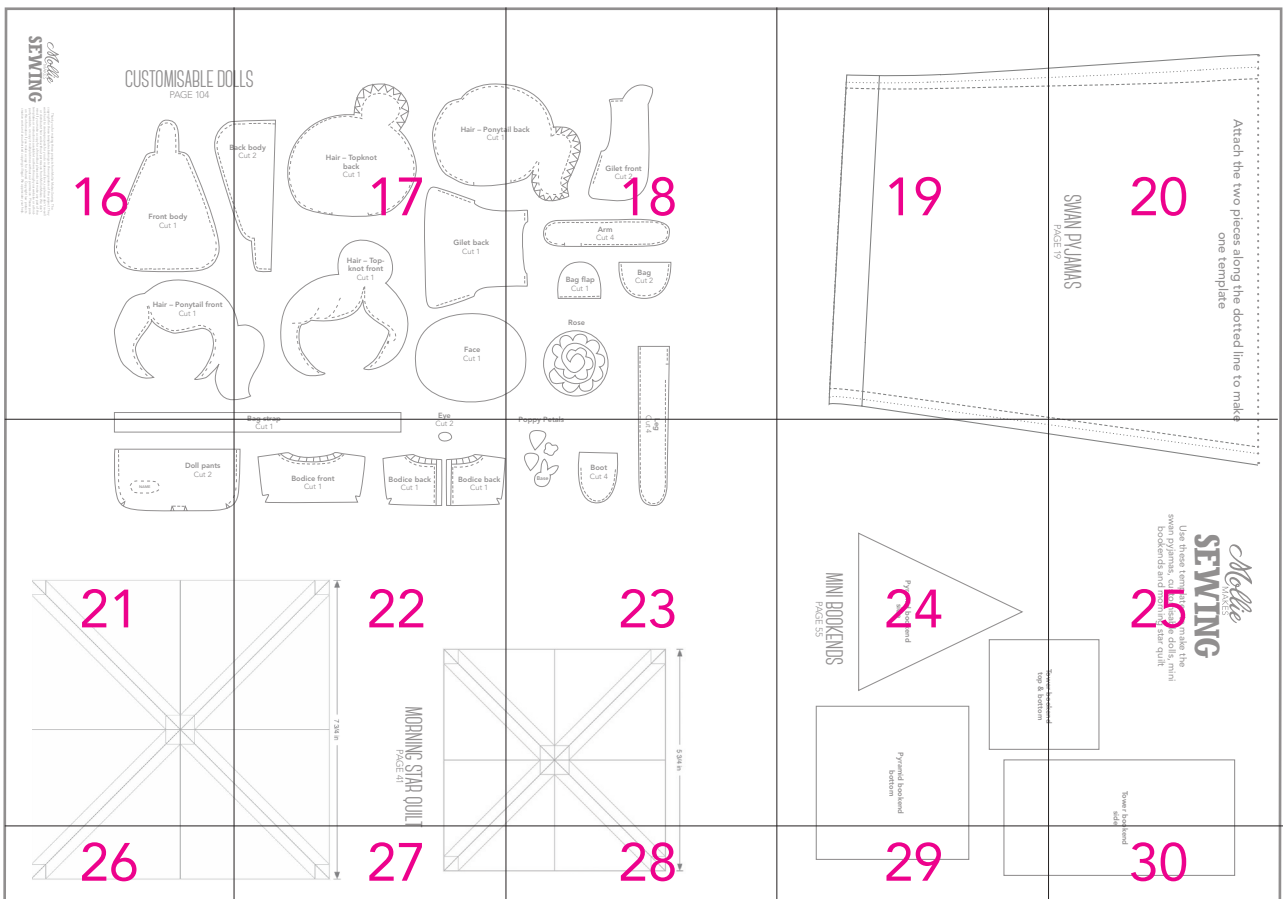
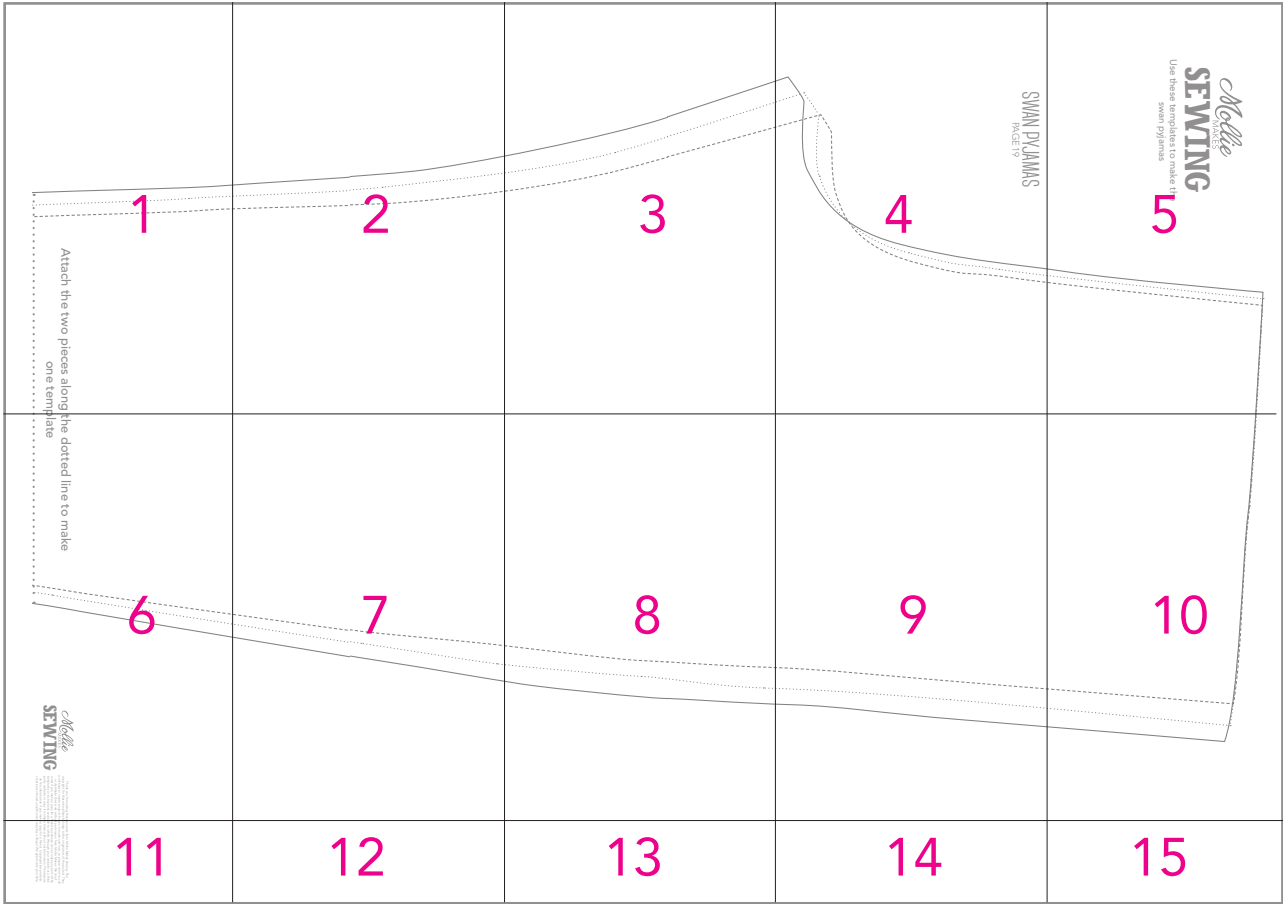
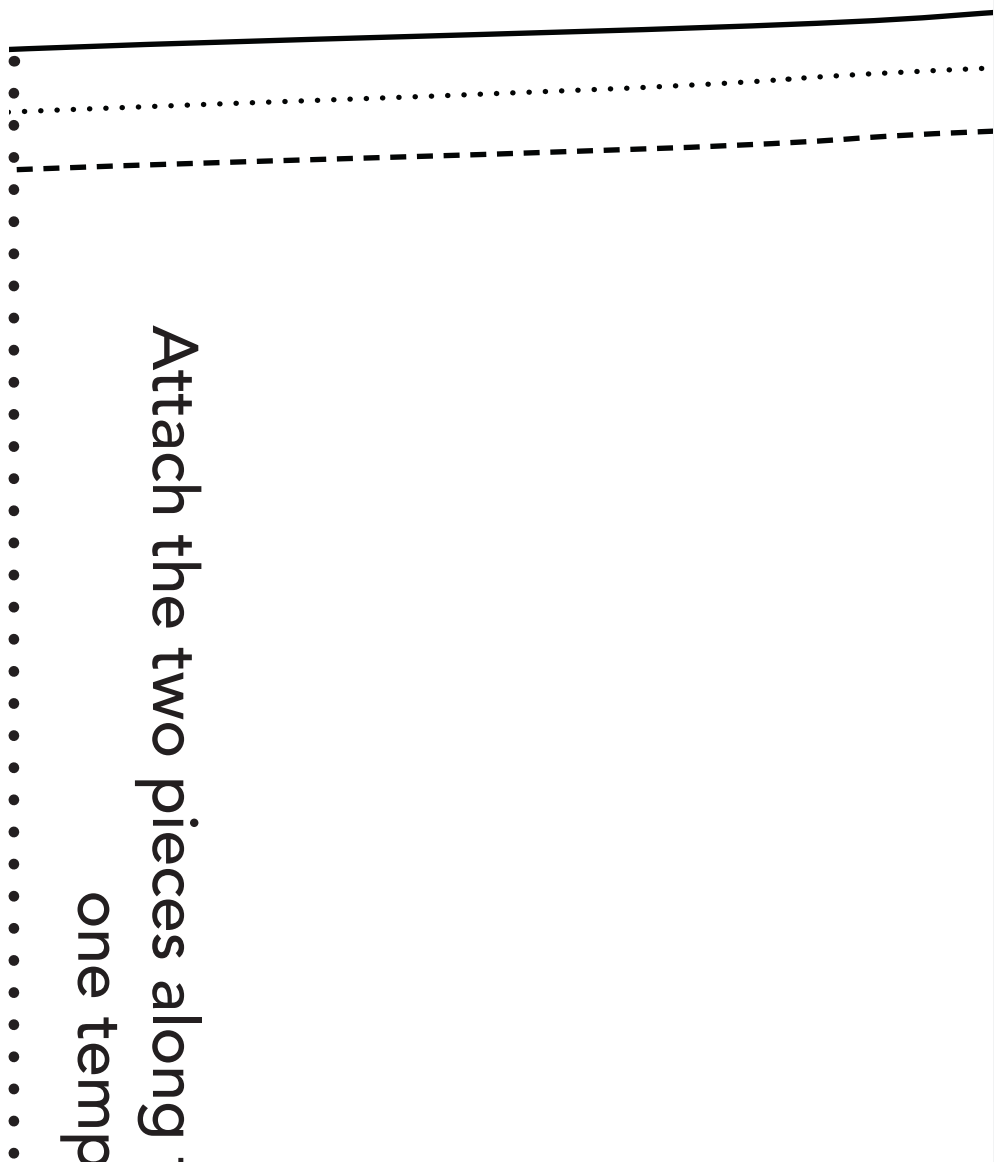


# Mollie MAKES SEWING

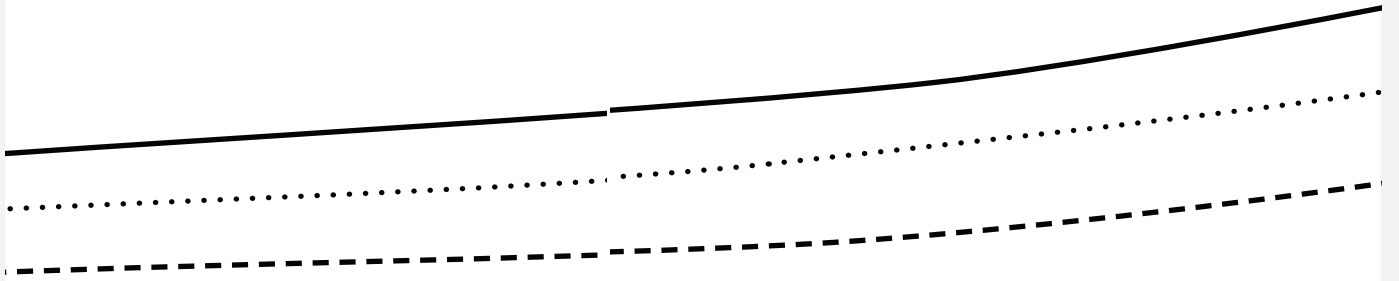
## HOW TO PRINT THIS PATTERN

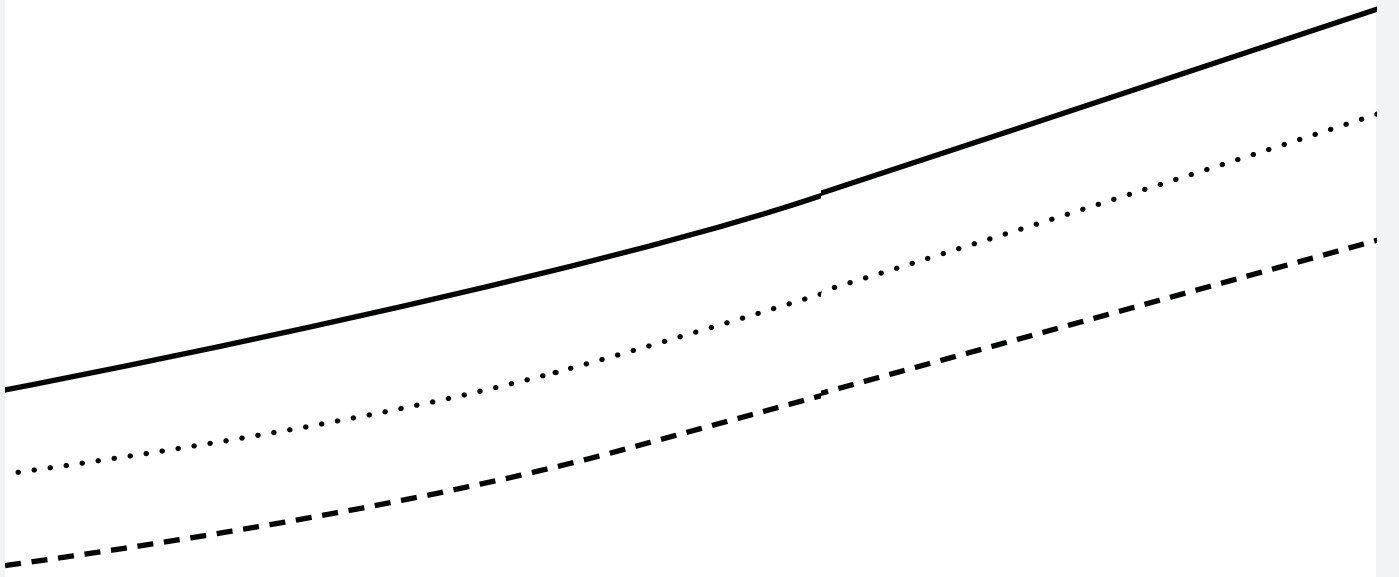
Print out this 30-page PDF on to A4 paper. Trim away the shaded border from each page and position the pages as below to assemble the pattern...





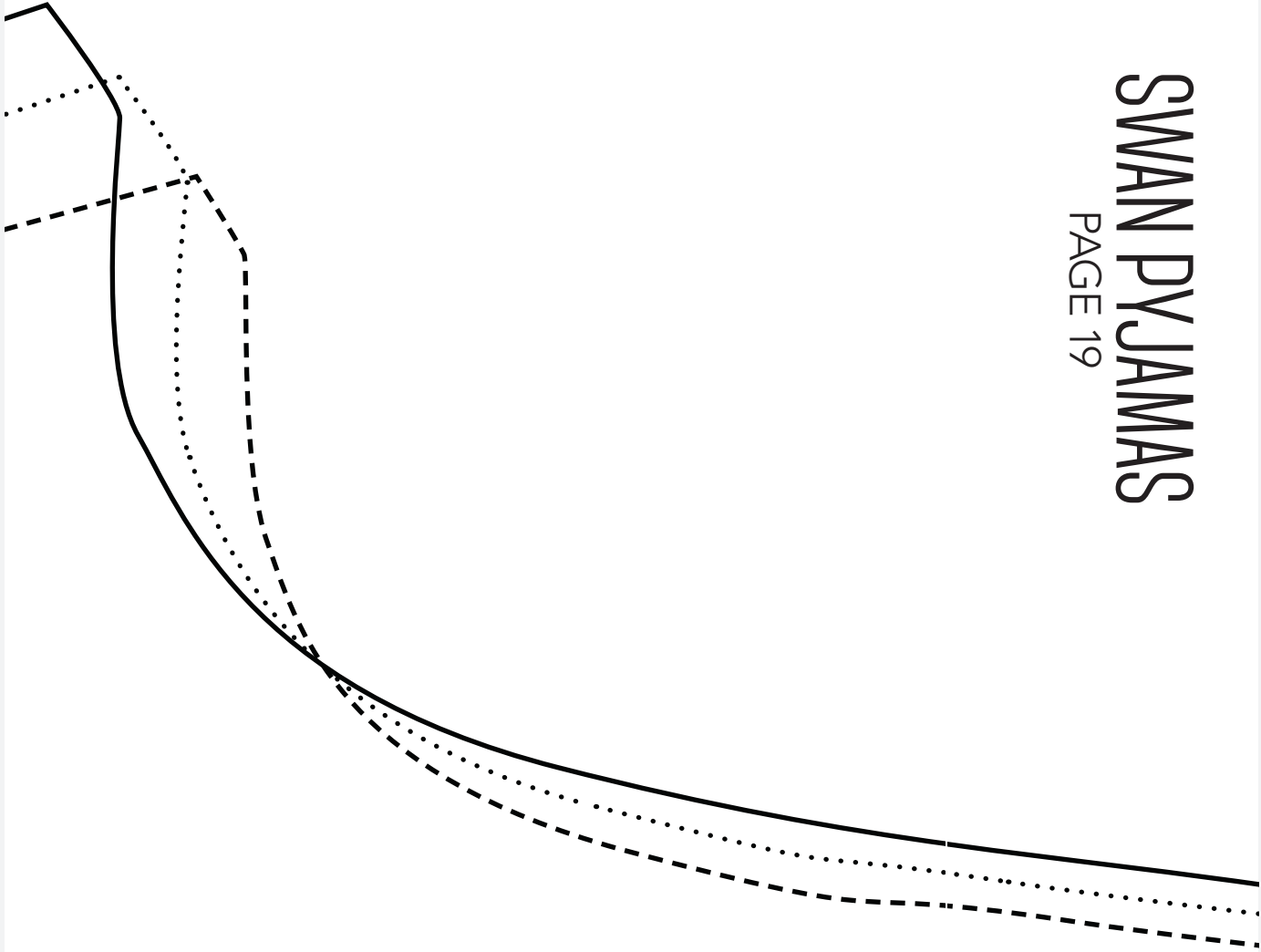
Attach the two pieces along the  
one temp





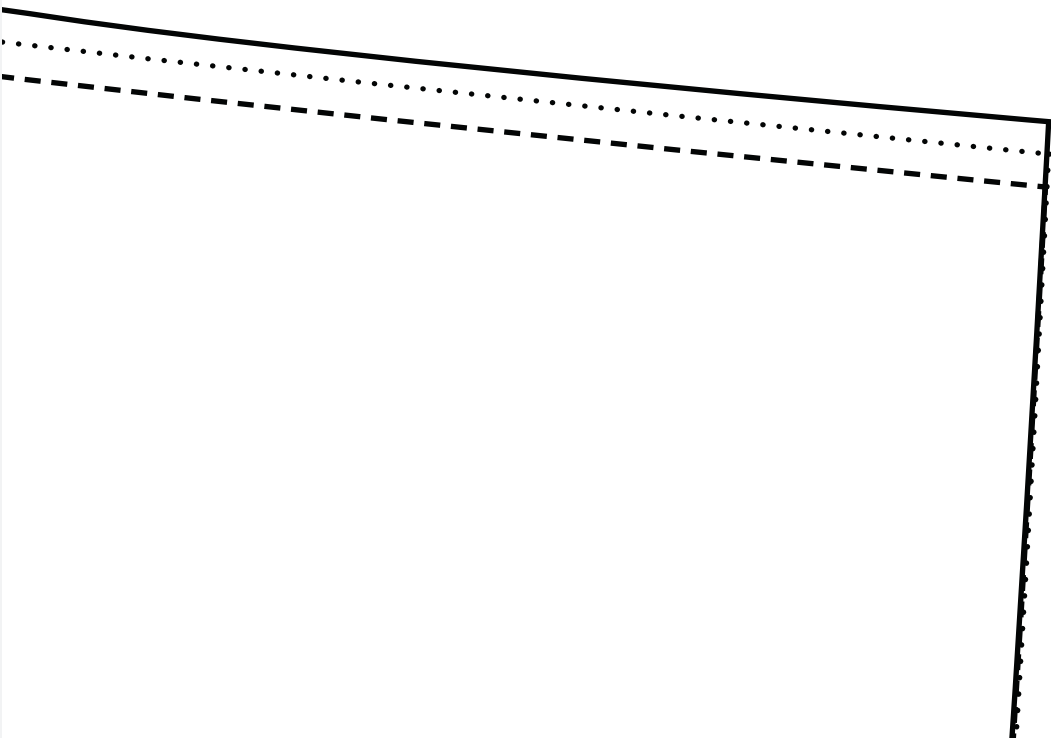
# SWAN PYJAMAS

PAGE 19

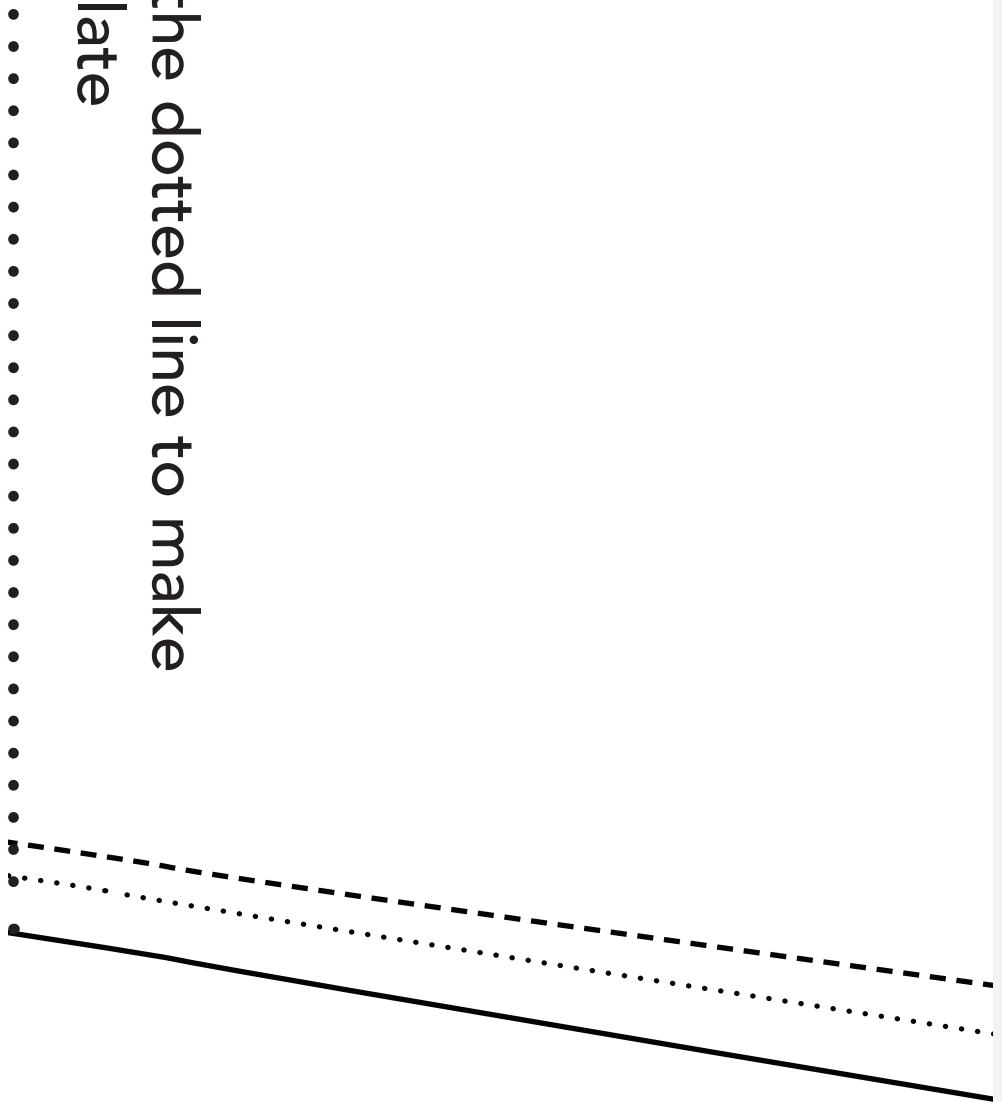


*Mollie*  
MAKES  
**SEWING**

Use these templates to make the  
swan pyjamas

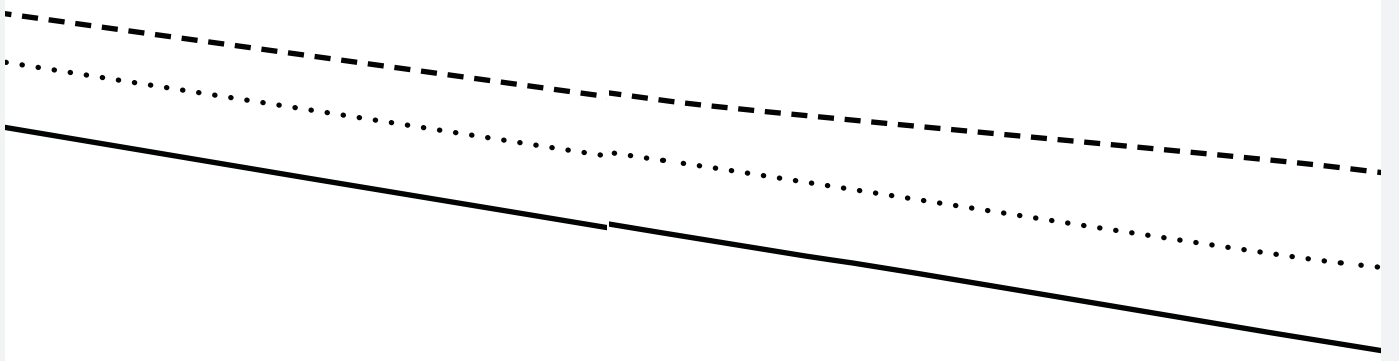


the dotted line to make  
late

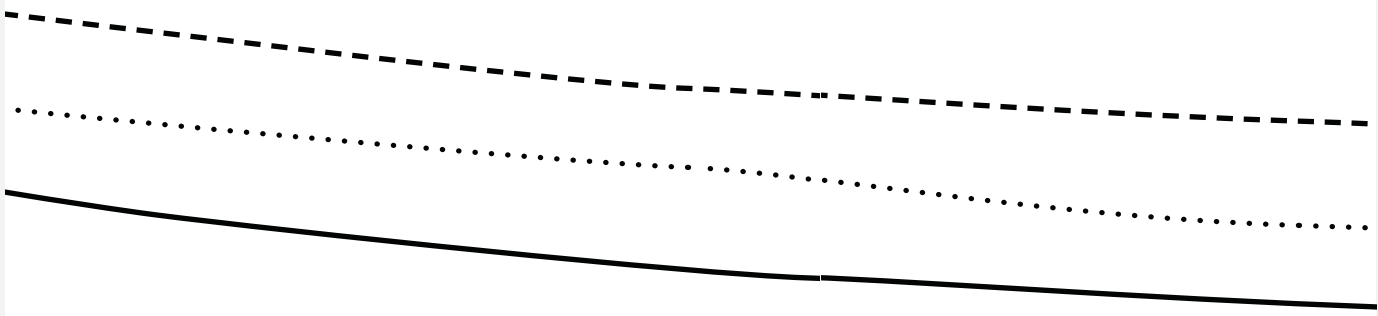


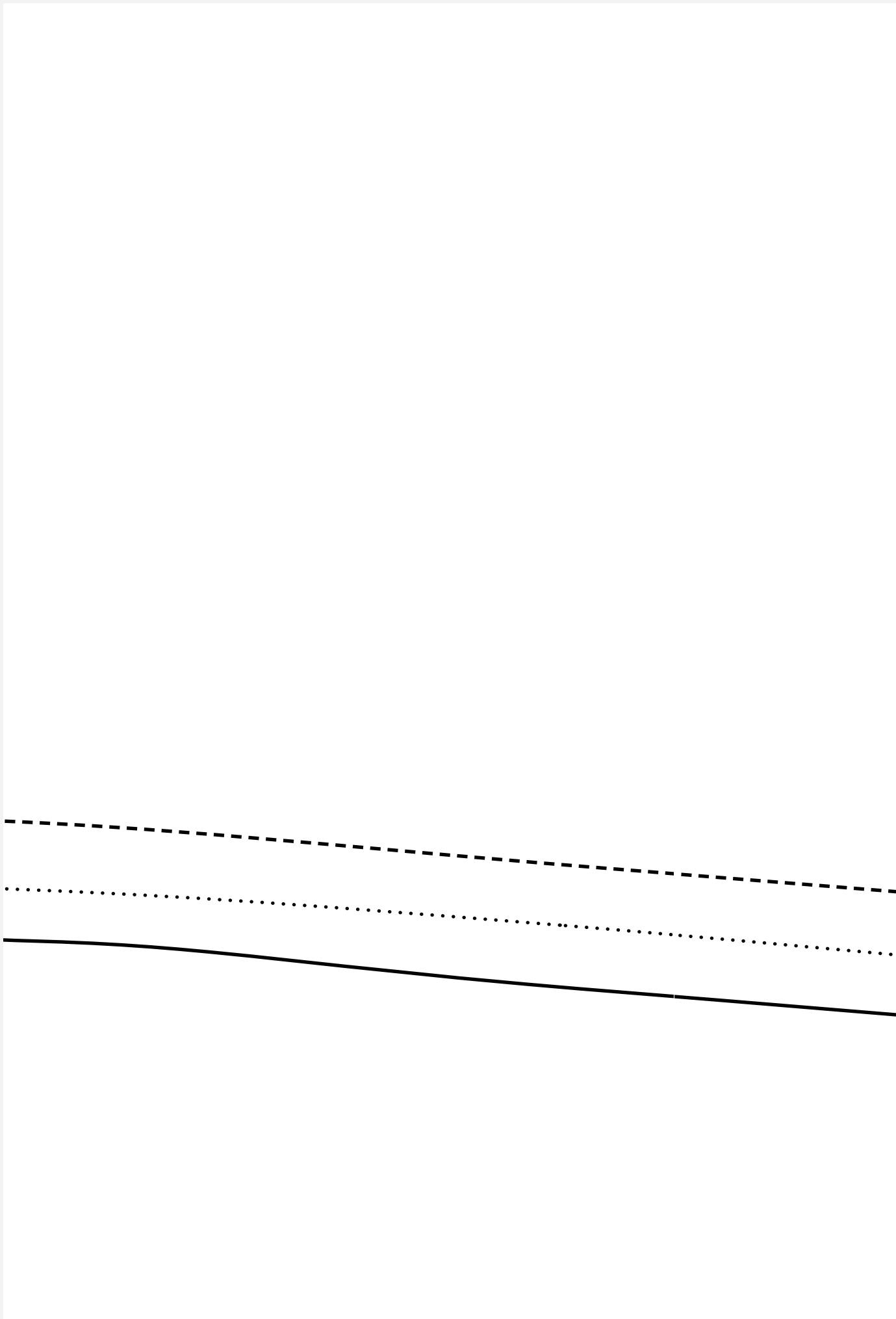
*Mollie*  
MAKES  
**SEWING**

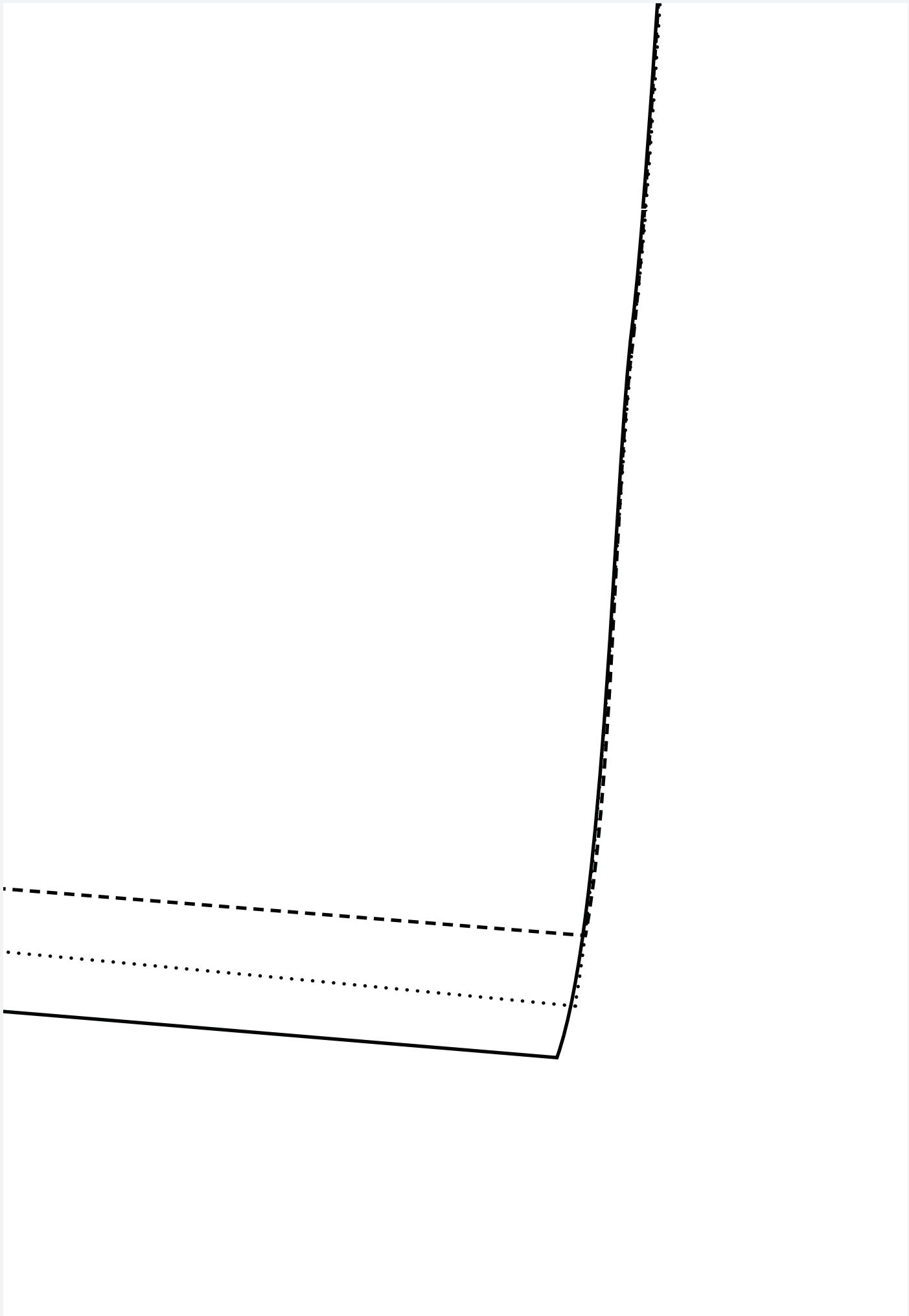
Thank you for making these!  
copyright for these templates be  
work hard to create projects for y  
or distribute their work without  
mind if you make a copy for a fri  
templates or instructions availab  
party website, or copy it multipl  
on this information if you make  
creative work and unauthorised











projects from Mollie Makes Sewing. The  
rights to the originals of the project. They  
are yours to make and love, so please don't resell  
them without permission from Mollie Makes. We don't  
mind but please do not make any part of the  
pattern available to others through your website or a third-  
party site without our permission. Please pass  
a copy for a friend. Copyright law protects  
your work. Copying is illegal. We appreciate your help.





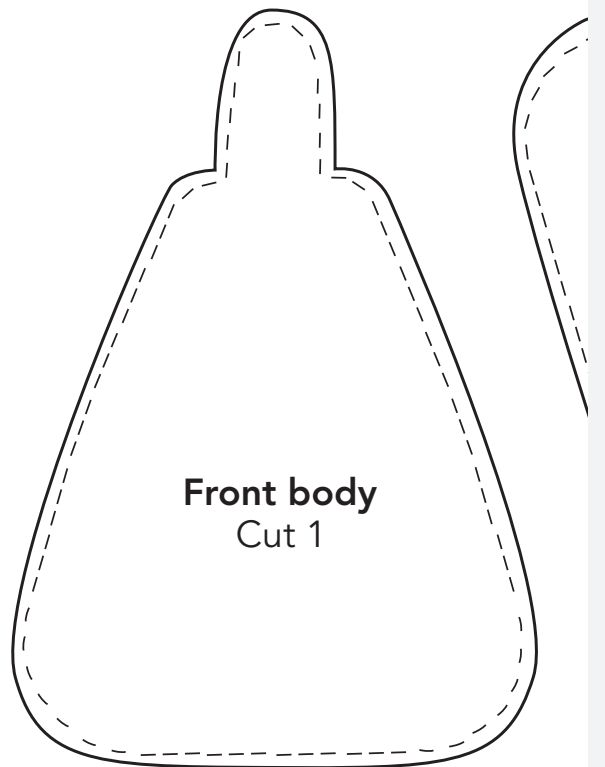




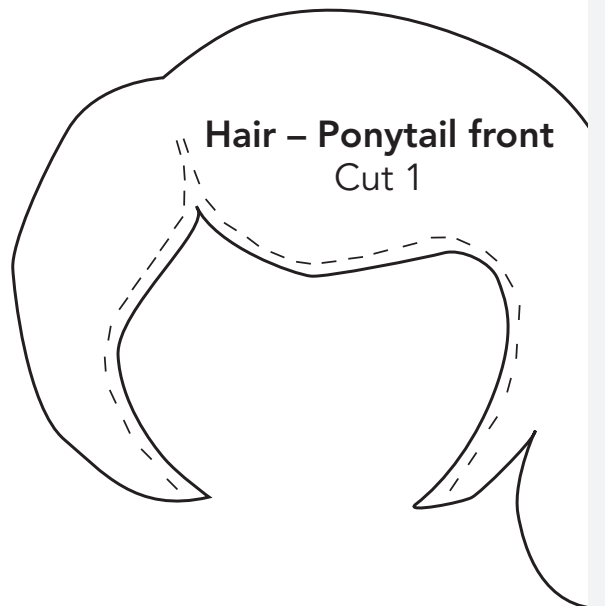


# CUSTOMISABLE DO

PAGE 104



**Front body**  
Cut 1

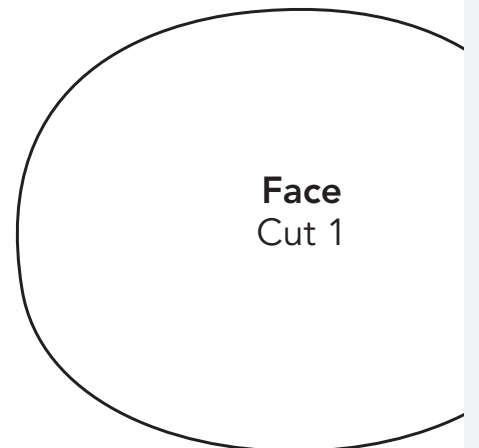
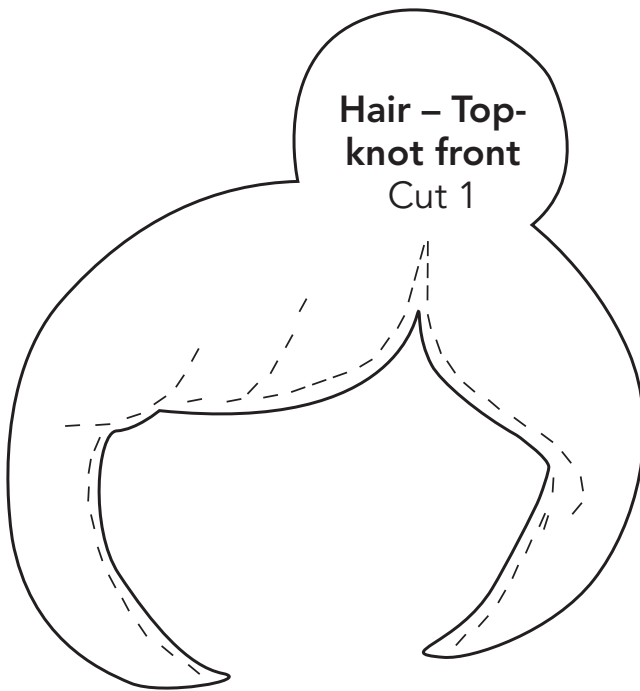
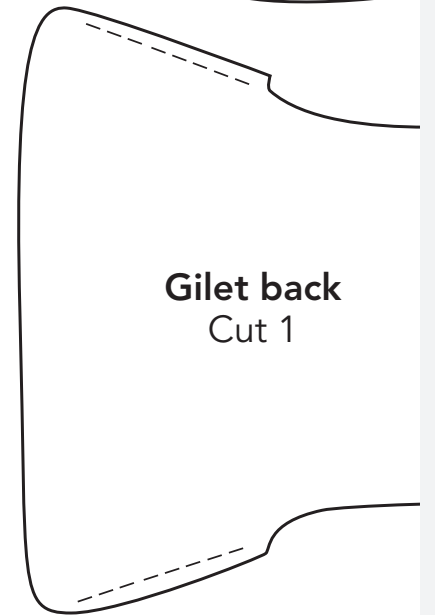
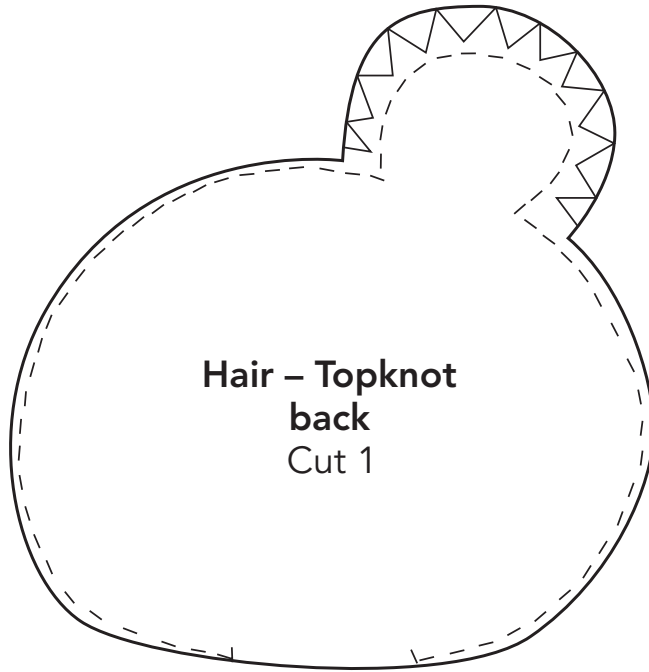
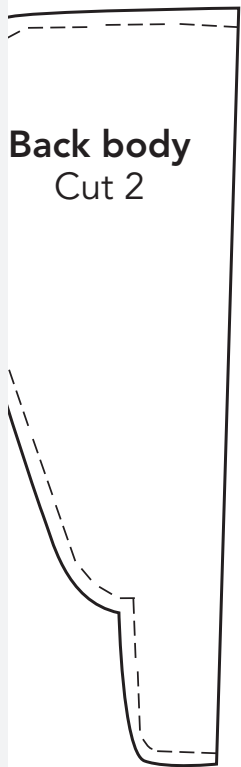


**Hair - Ponytail front**  
Cut 1

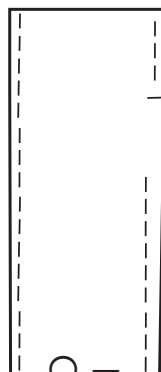
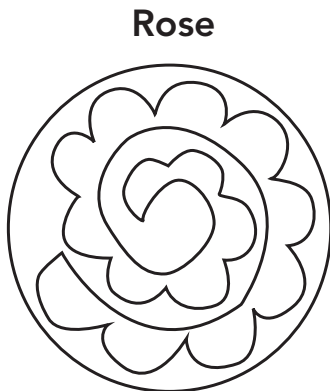
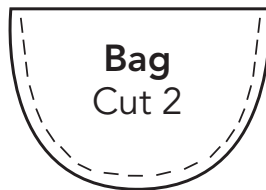
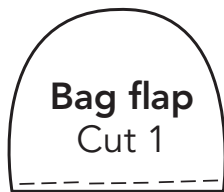
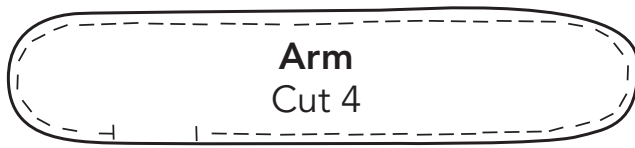
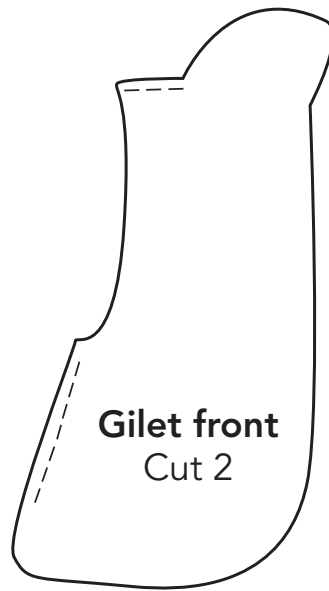
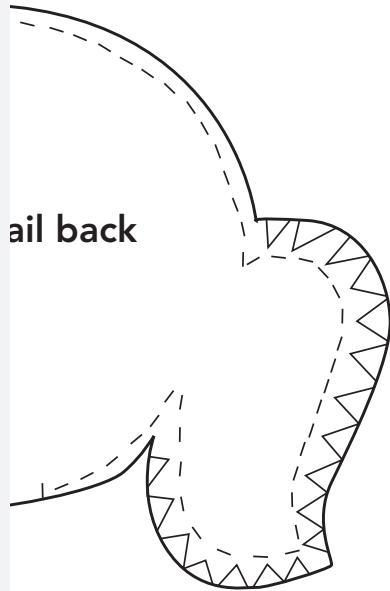
*Mollie*  
MAKES  
**SEWING**

Thank you for making these projects from Mollie Makes Sewing. The copyright for these templates belongs to the originators of the project. They work hard to create projects for you to make and love, so please don't re-sell or distribute their work without permission from Mollie Makes. We don't mind if you make a copy for a friend but please do not make any part of the templates or instructions available to others through your website or a third-party website, or copy it multiple times without our permission. Please pass on this information if you make a copy for a friend. Copyright law protects creative work and unauthorised copying is illegal. We appreciate your help.

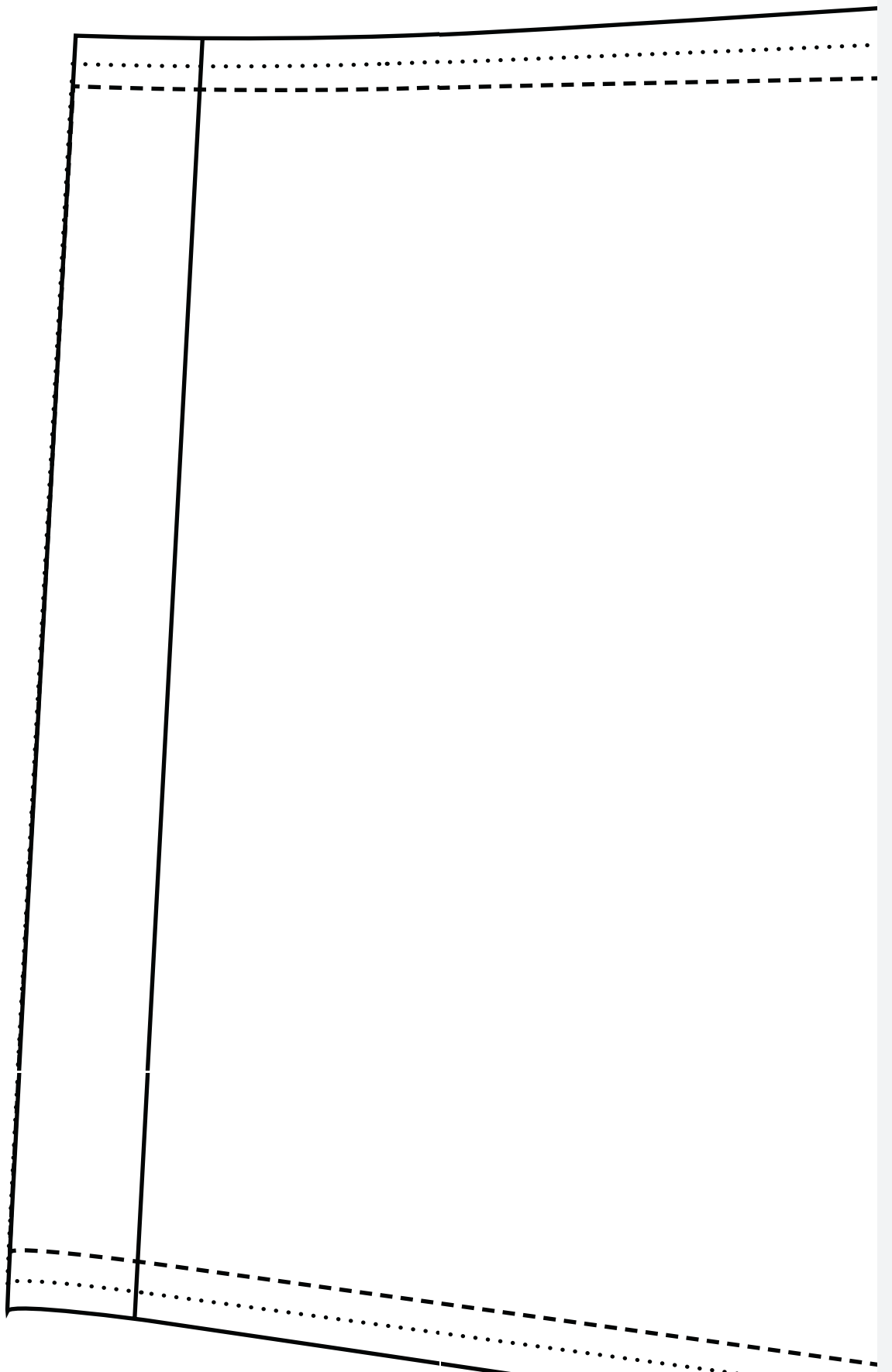
# DOLLS



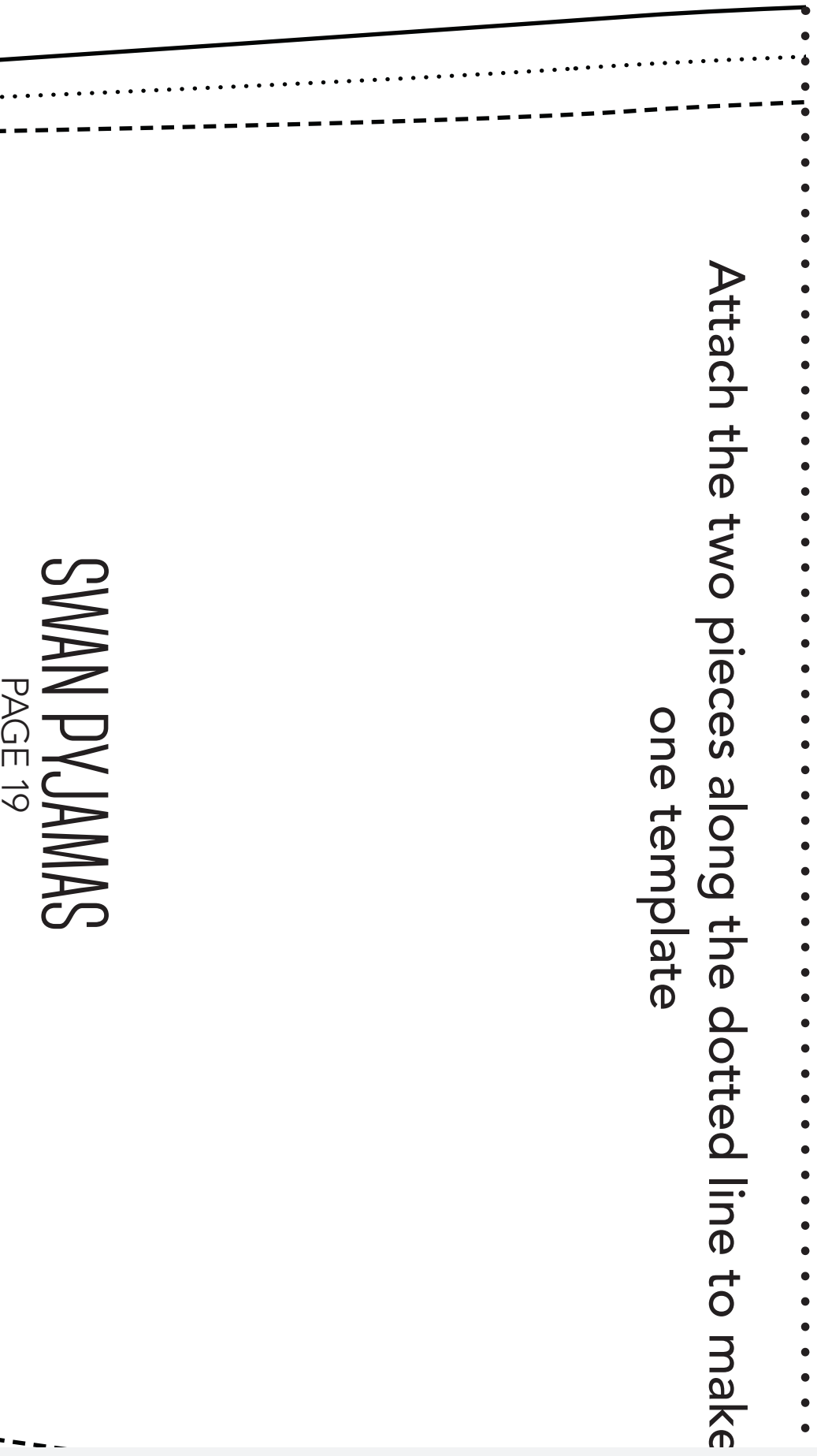
Eye



Benny Batale

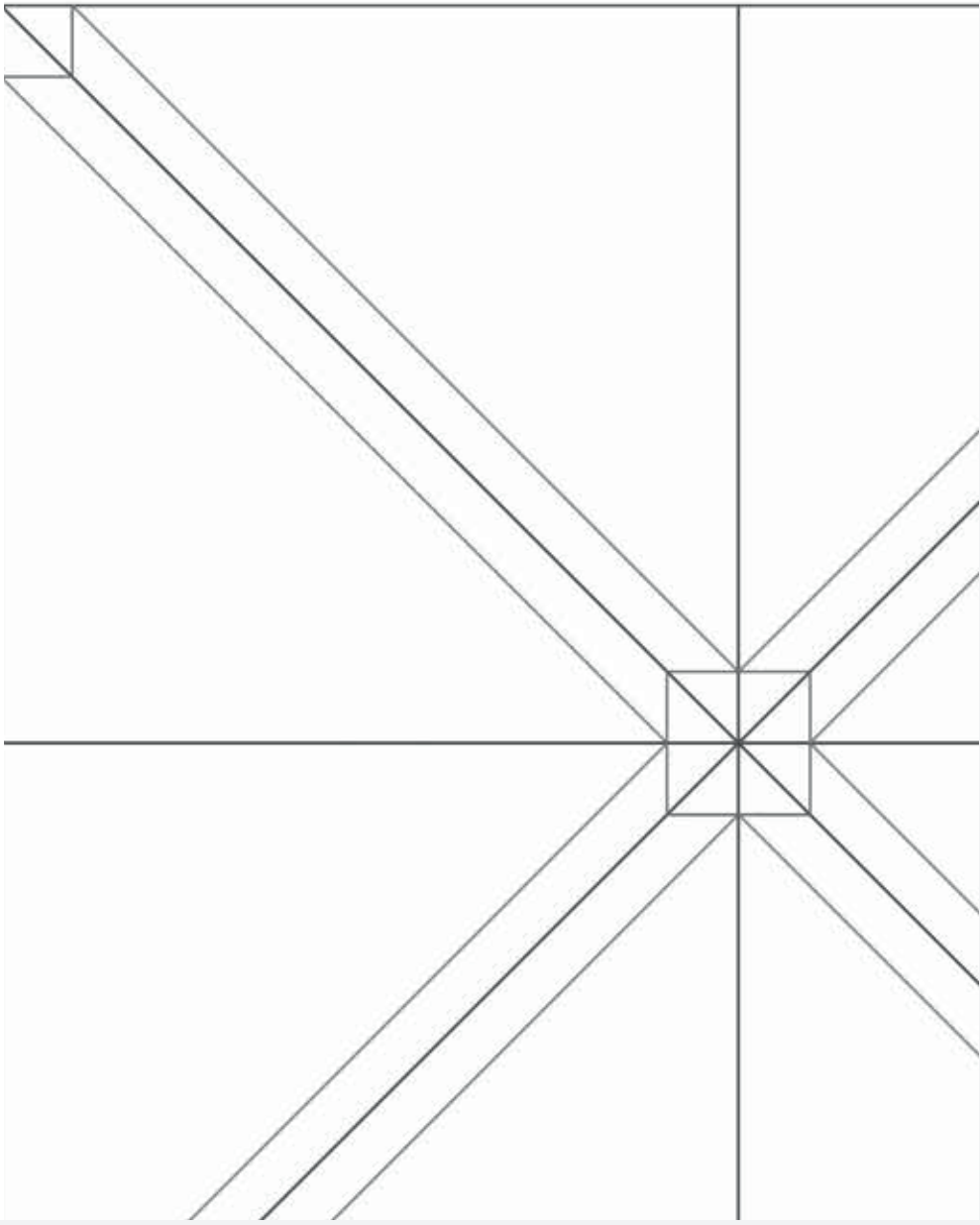
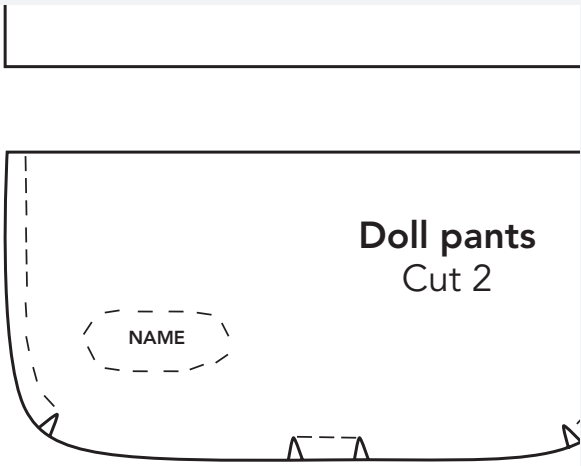


Attach the two pieces along the dotted line to make  
one template



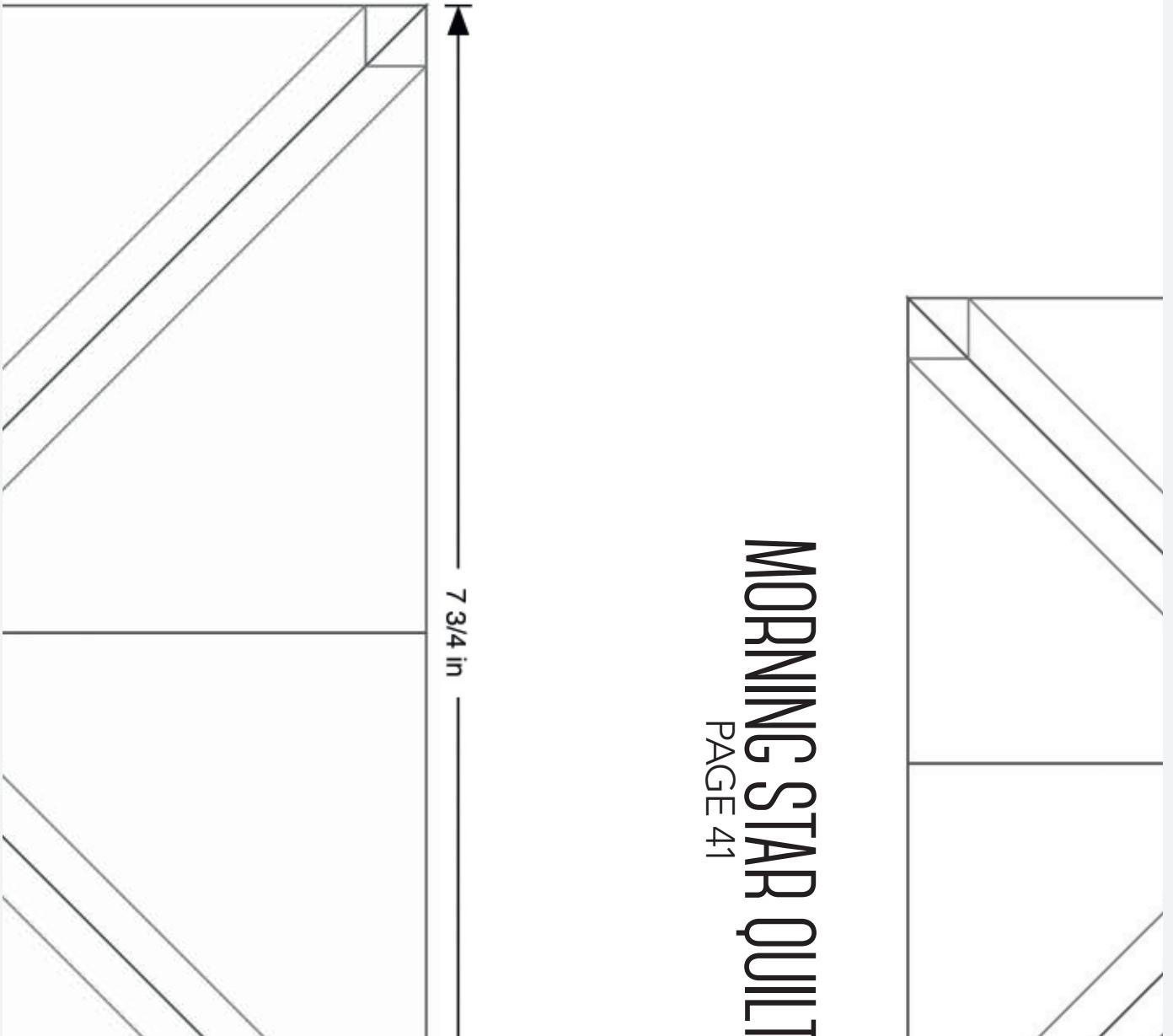
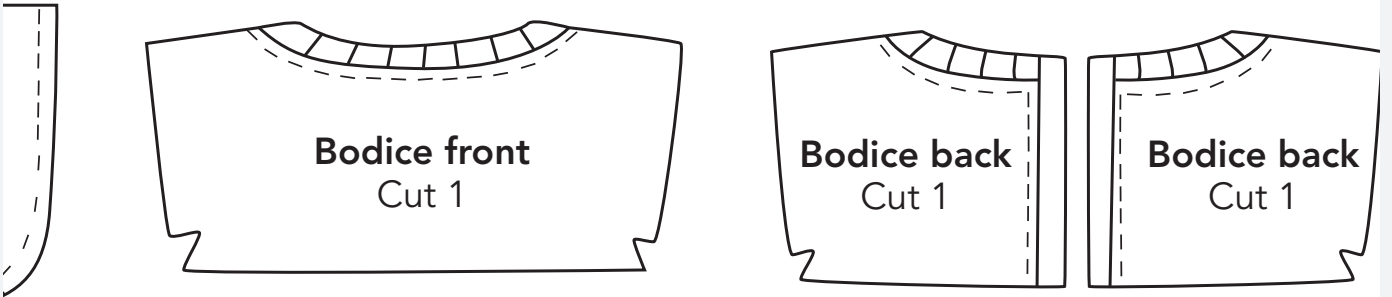
SWAN PYJAMAS

PAGE 19



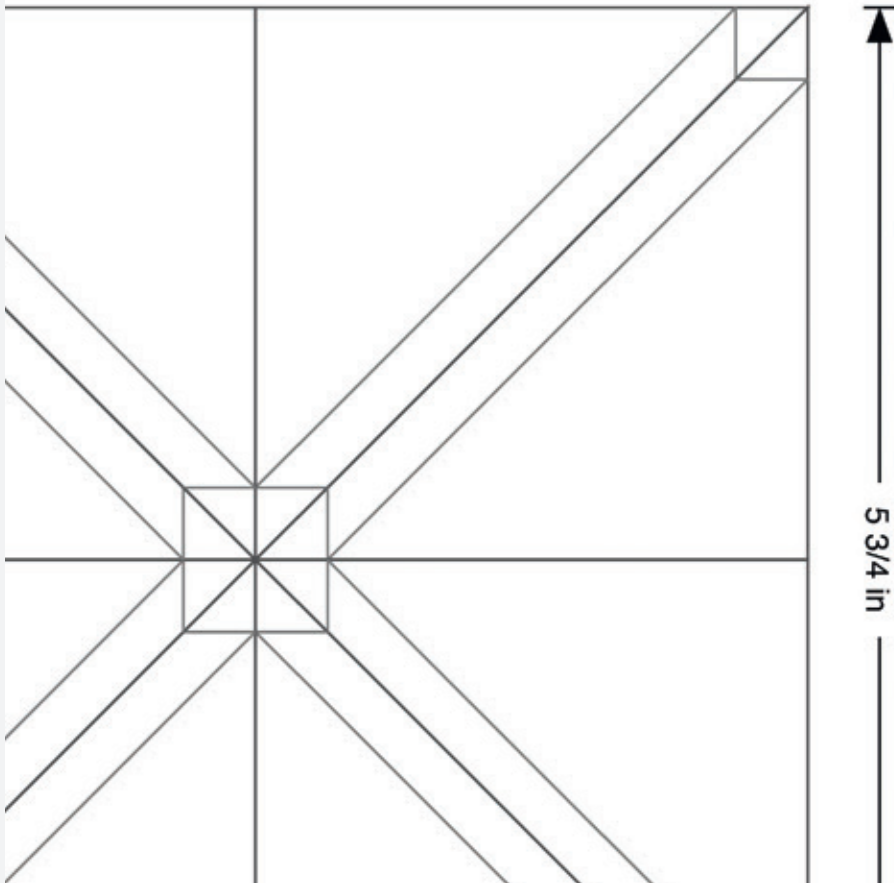
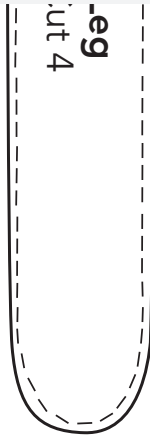
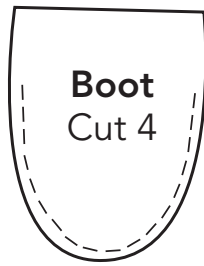
Bag strap  
Cut 1

Cut 2



MORNING STAR QUILT  
PAGE 41

Puppy Peltis





Tower bookend  
top & bottom

Pyramid bookend  
side

Pyramid bookend  
bottom

**MINI BOOKENDS**  
PAGE 55

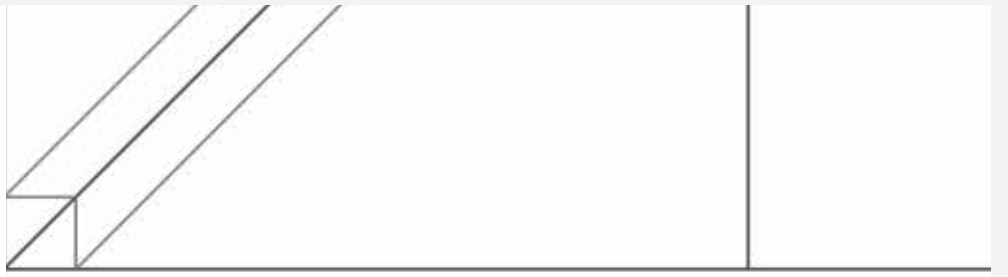


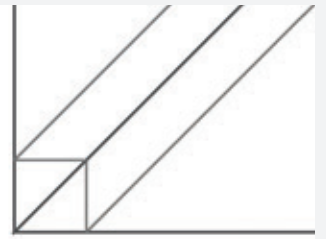
*Mollie*  
MAKES  
**SEWING**

Use these templates to make the  
swan pyjamas, customisable dolls, mini  
bookends and morning star quilt

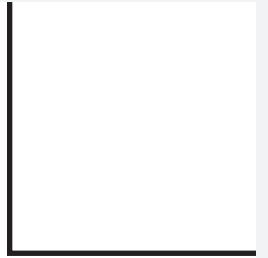


Tower box  
side









skend