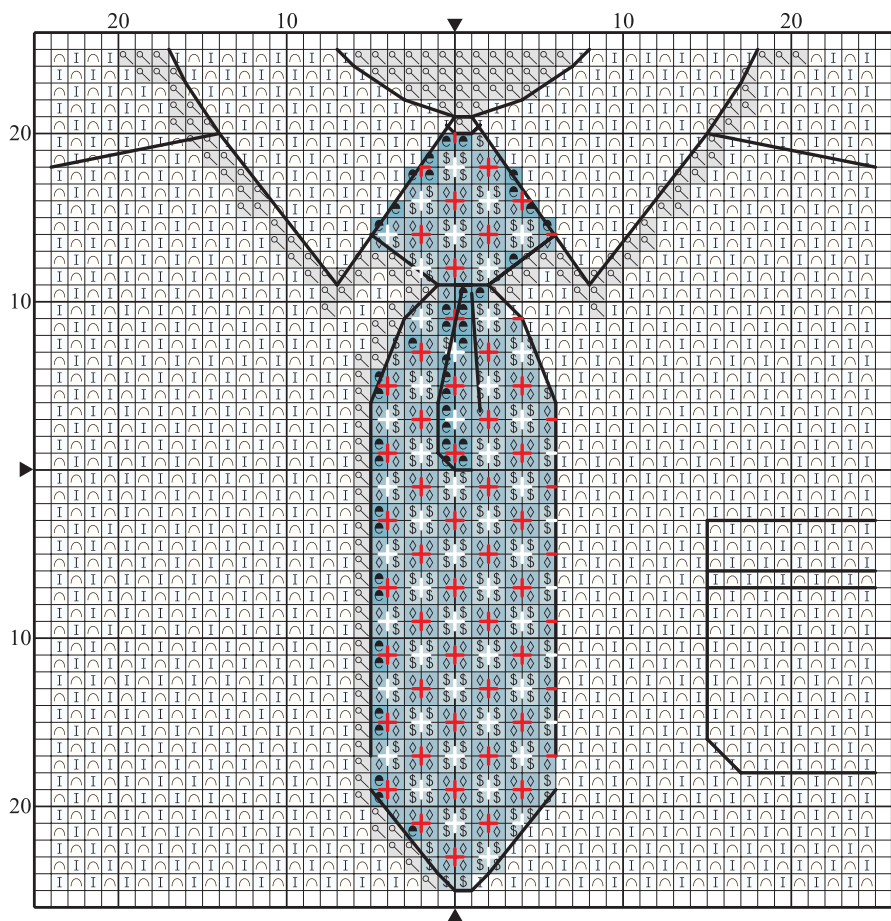
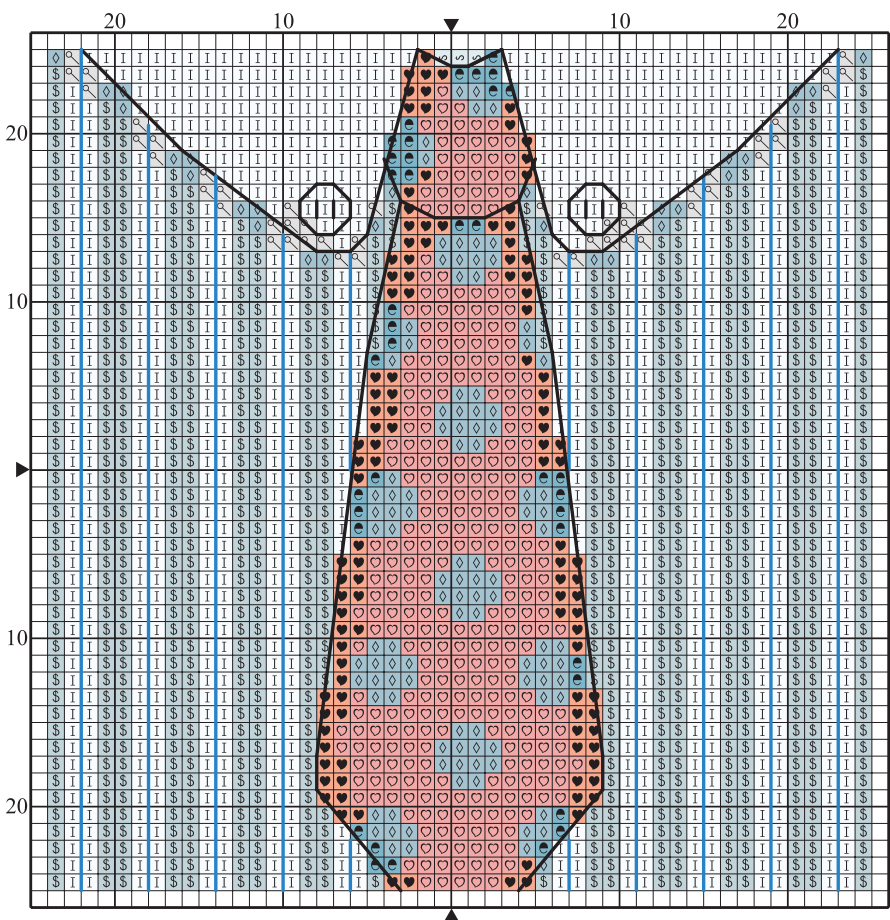
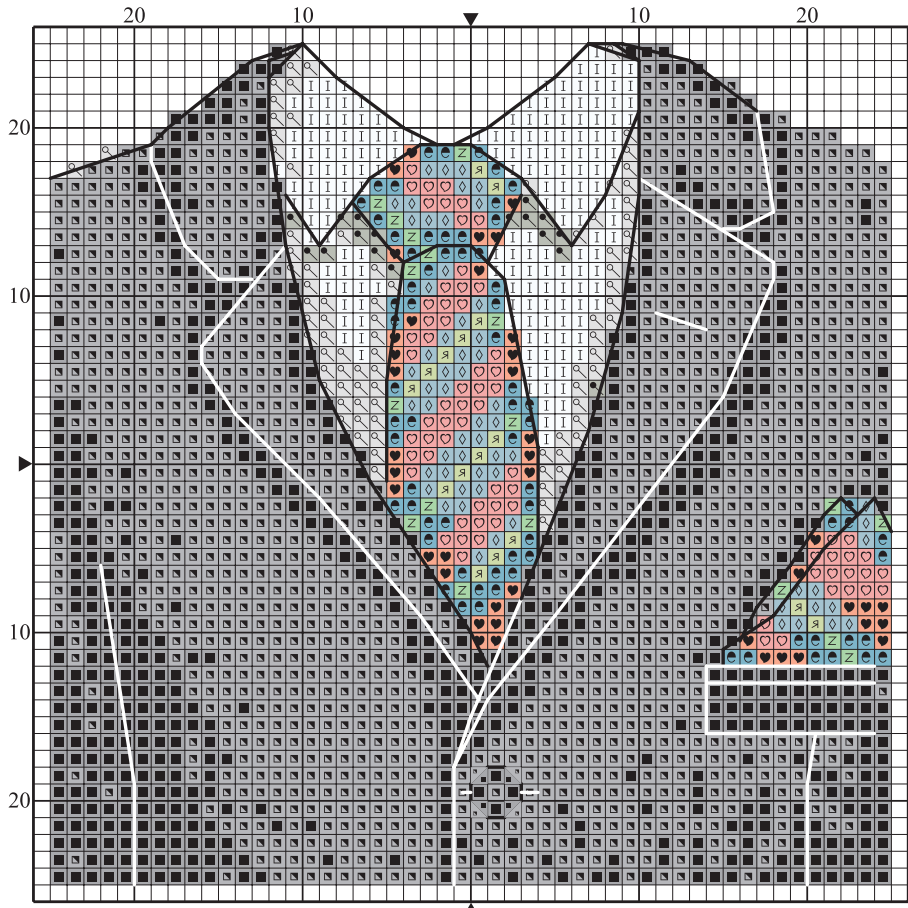


Men's shirt cards by Rhona Norrie



gathered.





### Shirts and ties key

✕ Cross stitch in two strands

	DMC	Anchor	Madeira	
∩	blanc	2	2402	white
I	B5200	1	2401	bright white
⦿	168	1096	1708	light grey
⦿	169	1040	1707	grey
■	310	403	2400	black
♥	347	1025	407	red
⦿	813	140	910	light blue
⦿	825	162	1011	dark blue
⦿	826	146	906	blue
⦿	827	160	1013	very light blue
⦿	905	257	1412	dark green
⦿	906	256	1410	green
♥	3328	1024	406	light red
■	3799	236	1713	dark grey

✕ Backstitch in one strand

—	B5200	1	2401	bright white
—	169	1040	1707	grey
—	310	403	2400	black
—	826	146	906	blue
—	3328	1024	406	light red

**MAXIMUM STITCH COUNT** 50 high x 50 wide

**DESIGN AREA** 14 HPI (28-count evenweave) – 9x9cm (3½x3½in)

These designs were stitched using DMC stranded cotton

