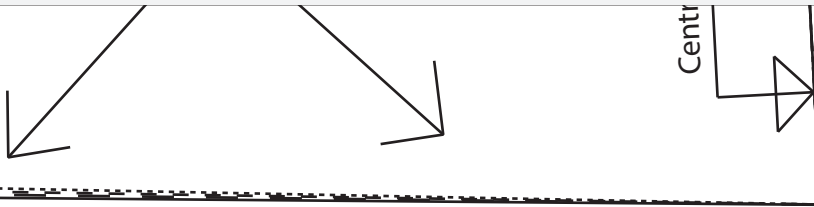


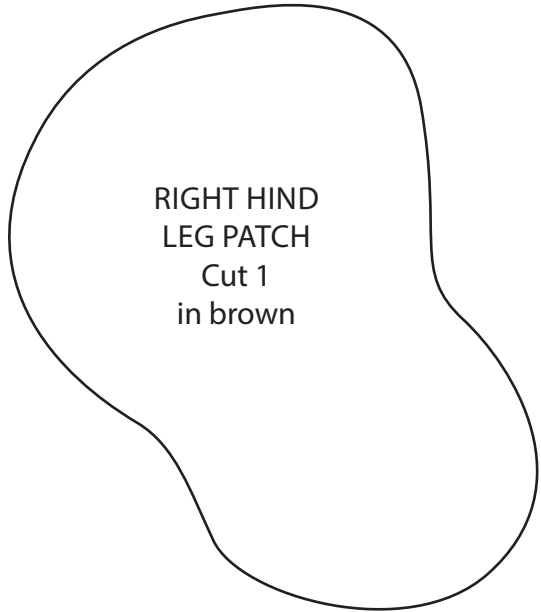
ACTUAL SIZE

FRONT  
YOKE

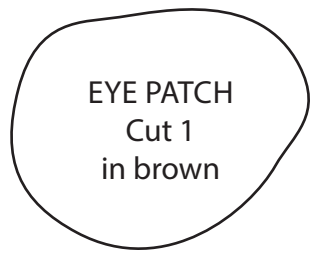


# Simply Sewing

FRESH IDEAS WITH FABRIC



RIGHT HIND  
LEG PATCH  
Cut 1  
in brown

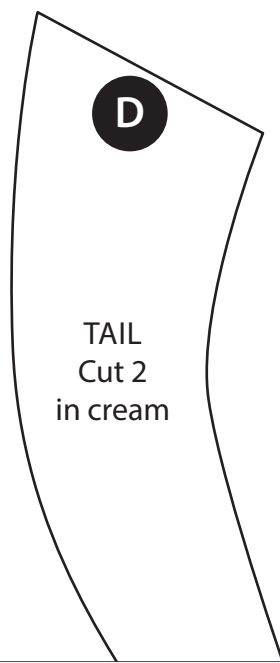


EYE PATCH  
Cut 1  
in brown

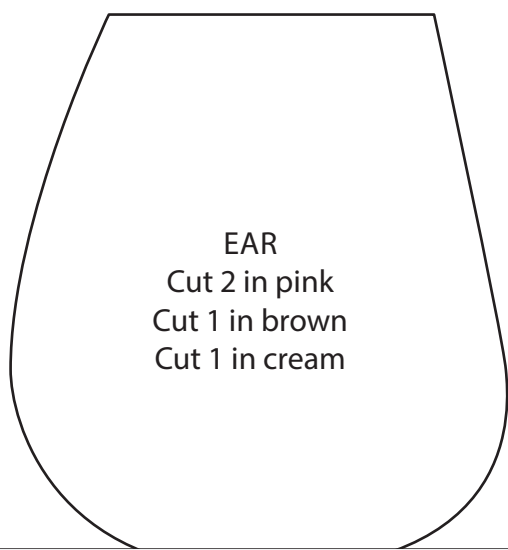
PERFECT  
PUPPY

**PAGE 53**

ACTUAL SIZE



TAIL  
Cut 2  
in cream

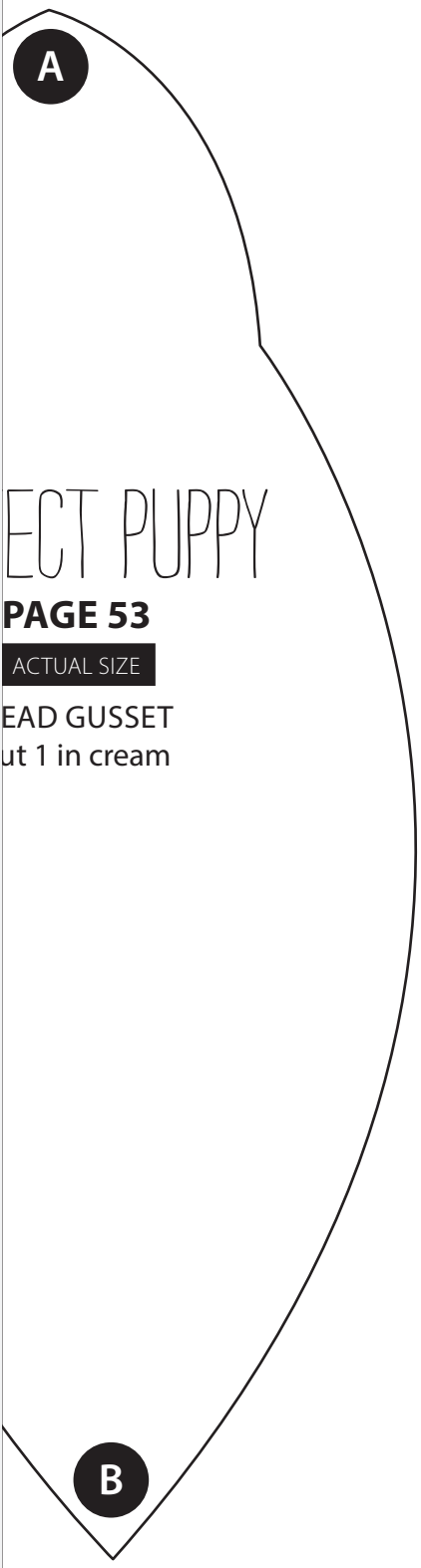


EAR  
Cut 2 in pink  
Cut 1 in brown  
Cut 1 in cream

PERF

H  
C

L  
SHO  
PA  
C



← —  
Increase  
sleeve length  
as required

ECT PUPPY

**PAGE 53**

ACTUAL SIZE

HEAD GUSSET  
cut 1 in cream

Sleeve opening

EFT  
JLDER  
TCH  
cut 1

# TWO PIECE TOP

**PAGE 34**

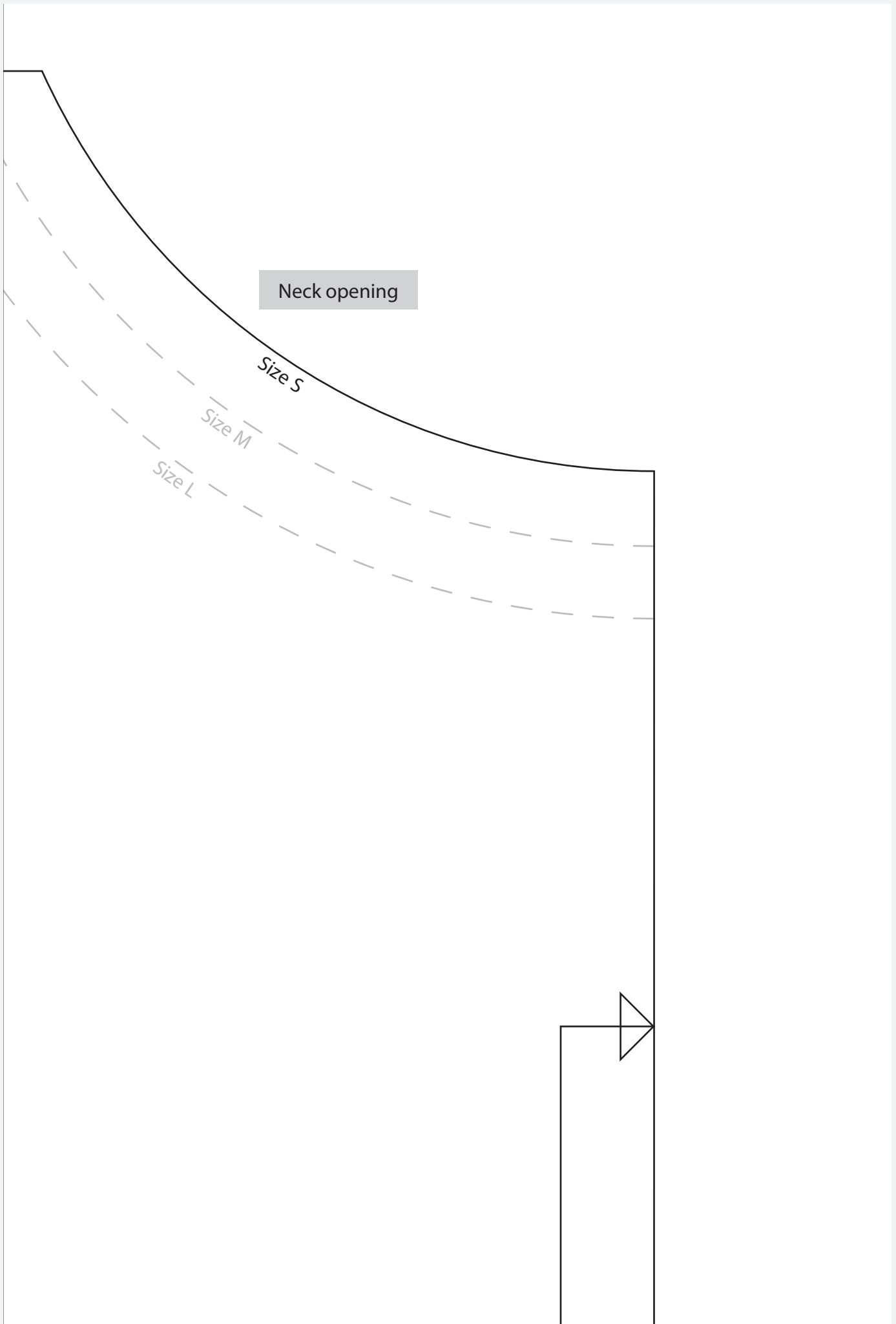
ACTUAL SIZE

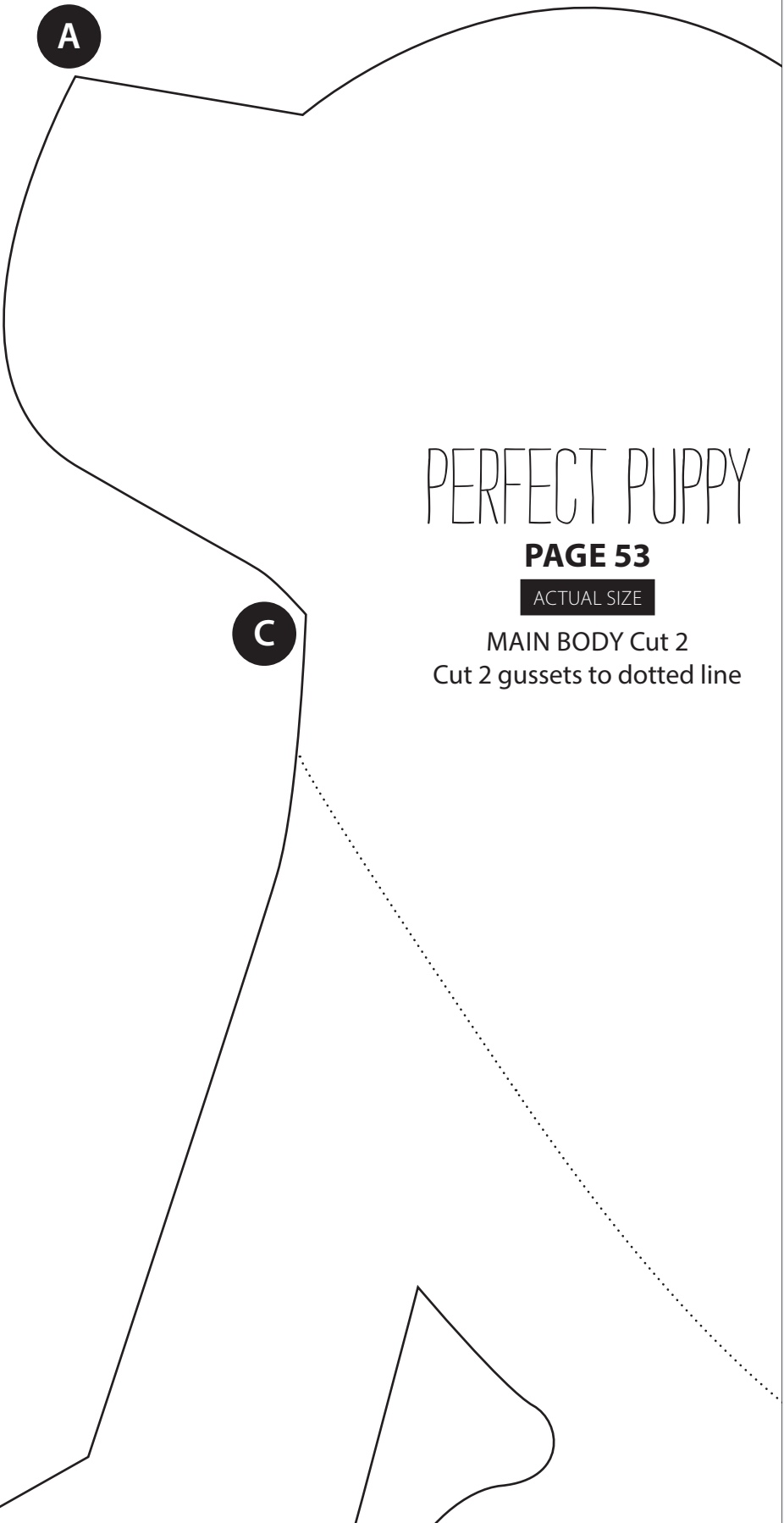
FRONT/BACK  
(CUT 2 ON FOLD)



Grainline

Add extra  
width  
here as  
required





# PERFECT PUPPY

**PAGE 53**

ACTUAL SIZE

MAIN BODY Cut 2  
Cut 2 gussets to dotted line



rown

Increase  
sleeve length  
as required



**B**

Cut 2 gussets to  
dotted line

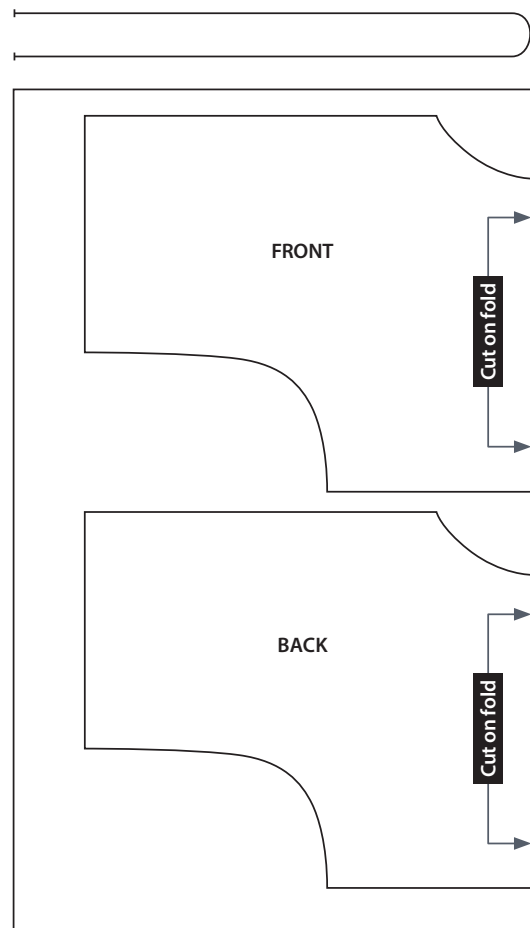
**E**

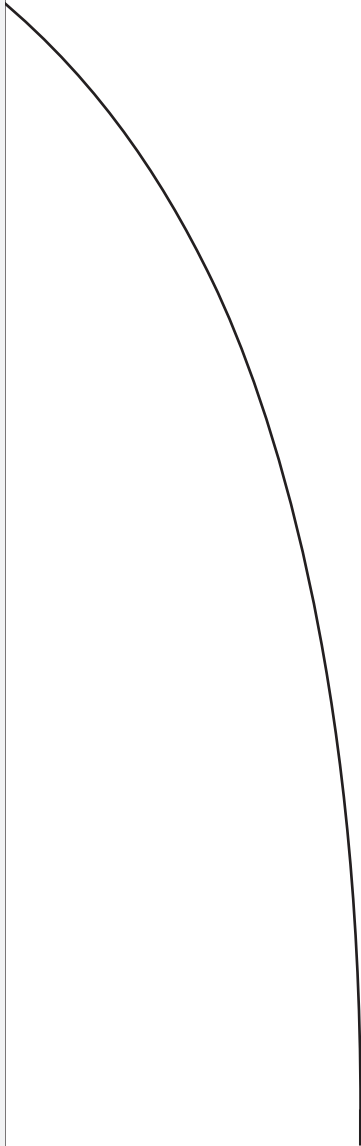


### NOTES ON SIZING

The above Front/Back pattern piece is sized to fit a UK dress size 8-10. For other dress sizes, please adjust the pattern piece as marked on the template, to fit you. You can add as much extra length to the hem and sleeves as you like. You will also need to add extra width to the template piece at the dashed line, approx 5-10cm per sizing bracket. So for size 12-14, add an extra 5-10cm; for size 16-18, add an extra 15-20cm; for size 20-22, add an extra 25-30cm. Check the size of your new template piece against your body measurements, making sure that the top will accommodate your bust and hips measurements. If in doubt, sew a toile or test top using spare fabric. The amount of fabric you will need will vary depending on how you adjust your template piece.

### CUTTING LAYOUT - TWO PIECE TOP





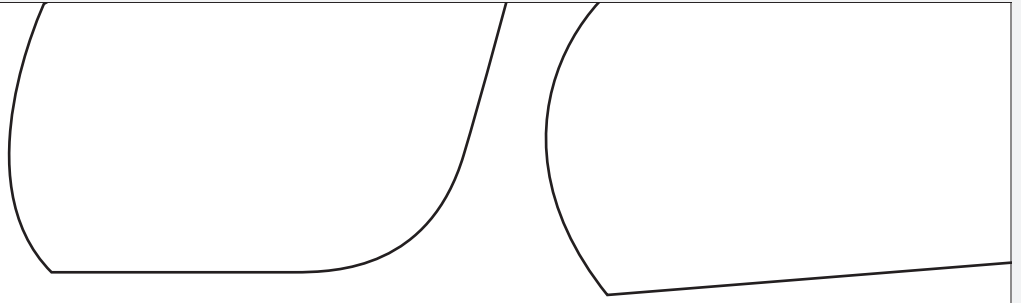
Increase  
body length  
as required  
↓

Cut on fold



Increase  
body length  
as required







D

**TRY  
3 ISSUES  
FOR £5!**



**LEARN HOW**  
Machine tension  
troubleshooting

**2020 TRENDS**  
DENIM  
TOP 10 EXPERT TIPS  
+ PATTERN ROUND-UP

**PERFECT FIT**

12 garments, homewares and gifts to make you smile

**+PLUS:** Lion cushion • Sunglasses case • Kid's playroom • Sewing podcasts



*Sewing gifts  
with every  
issue!*



*Simply Sewing* is the perfect magazine for the modern sewist! Simple-to-follow projects mean you can get started straight away, using the fabulous sewing gifts with every issue. Already whipping up home-sewn makes? Be inspired by expert tricks and tips, in-depth technical features and profiles of amazing designers. *Simply Sewing* is a new approach to dressmaking and home sewing.

**SUBSCRIBE TODAY: TRY 3 ISSUES FOR £5!**

[www.buysubscriptions.com/SWGTHA](http://www.buysubscriptions.com/SWGTHA)

or call **03330 162 149** & quote code SWGTHA



[facebook.com/simplysewingmagazine](https://facebook.com/simplysewingmagazine)



[twitter.com/simplysewing](https://twitter.com/simplysewing)



[pinterest.com/simplysewingmag](https://pinterest.com/simplysewingmag)



[instagram.com/simplysewingmag](https://instagram.com/simplysewingmag)

[www.gathered.how/simplysewing](http://www.gathered.how/simplysewing)

Terms and conditions: This introductory offer is for new UK Direct Debit subscribers only. After your first 3 issues, your subscription will continue at £17.99 every 3 issues. If you cancel within 2 weeks of receiving your penultimate issue you will pay no more than the £5 shown. All prices include home delivery. Full details of the Direct Debit guarantee are available on request. Prices correct at point of print and subject to change. Offer ends 31st December 2020. We reserve the right to reject or cancel any application for a trial subscription offer if you have previously benefited from a trial offer for the same magazine in the last 12 months or had three or more trial subscriptions to any magazine in the Immediate Media portfolio. UK calls will cost the same as other standard fixed line numbers (starting 01 or 02) and are included as part of any inclusive or free minutes allowances (if offered by your phone tariff). Outside of free call packages call charges from mobile phones will cost between 3p and 55p per minute. Lines are open Mon to Fri 8am – 6pm and Sat 9am – 1pm.