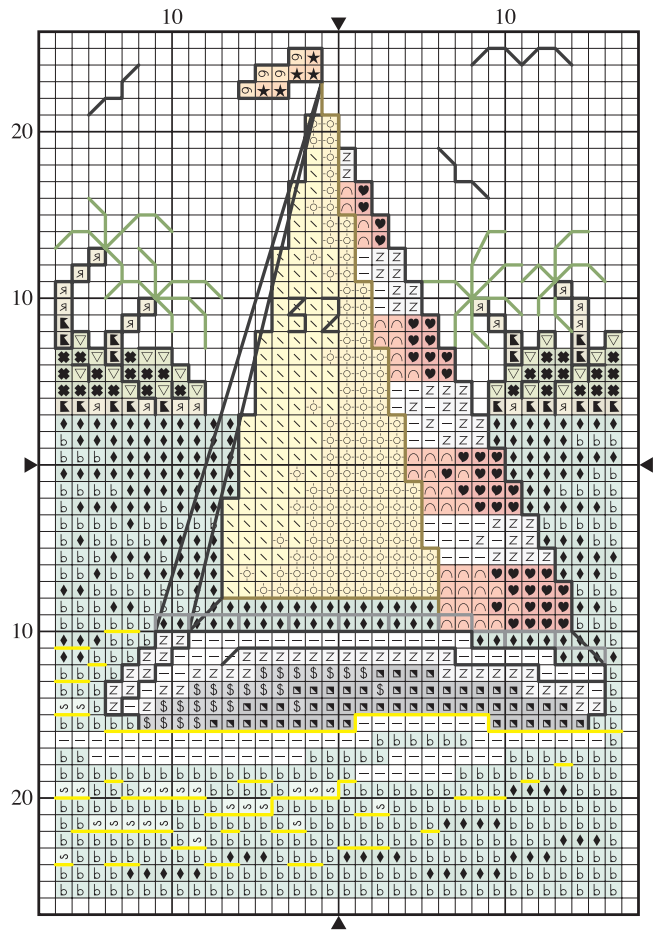
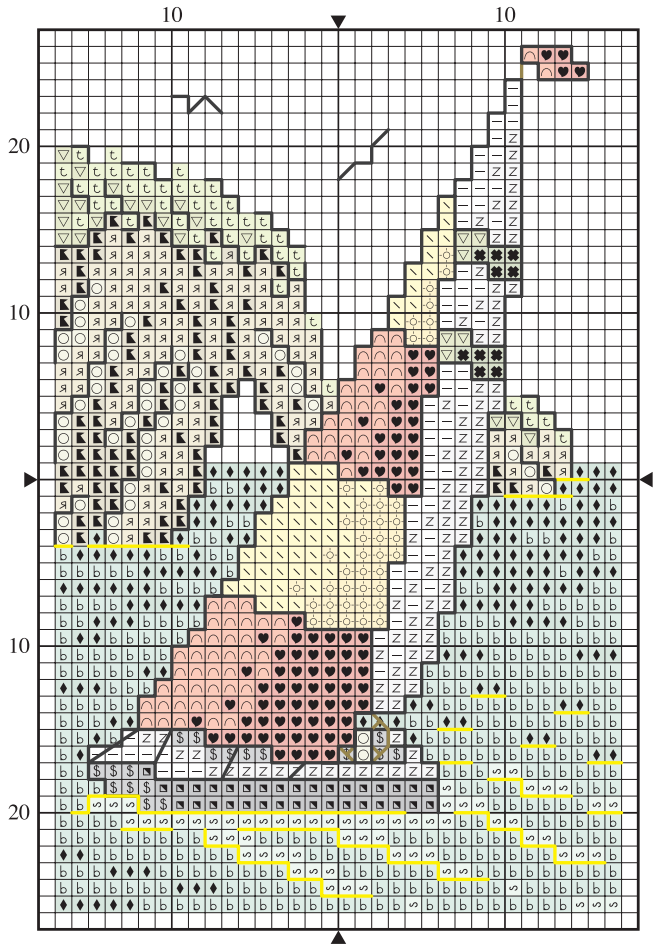
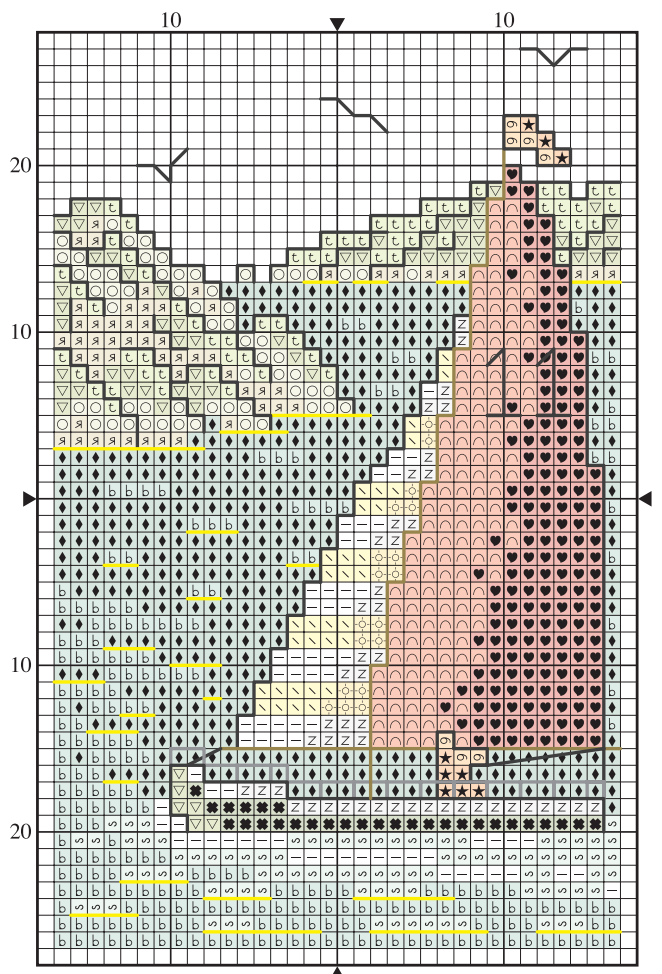


Boats at sea cross stitch patterns

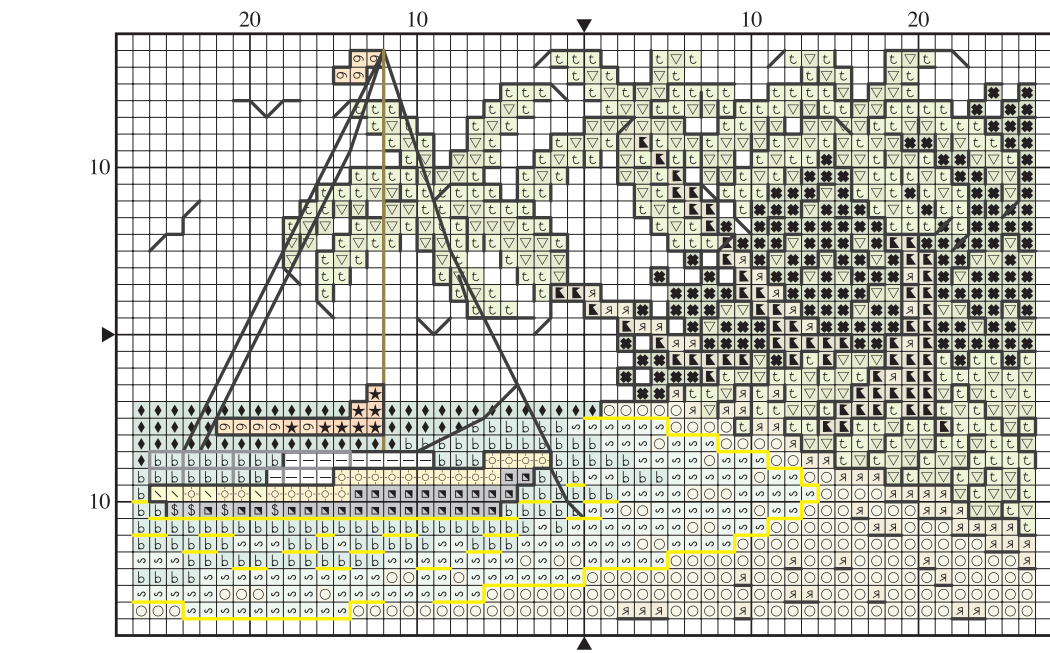
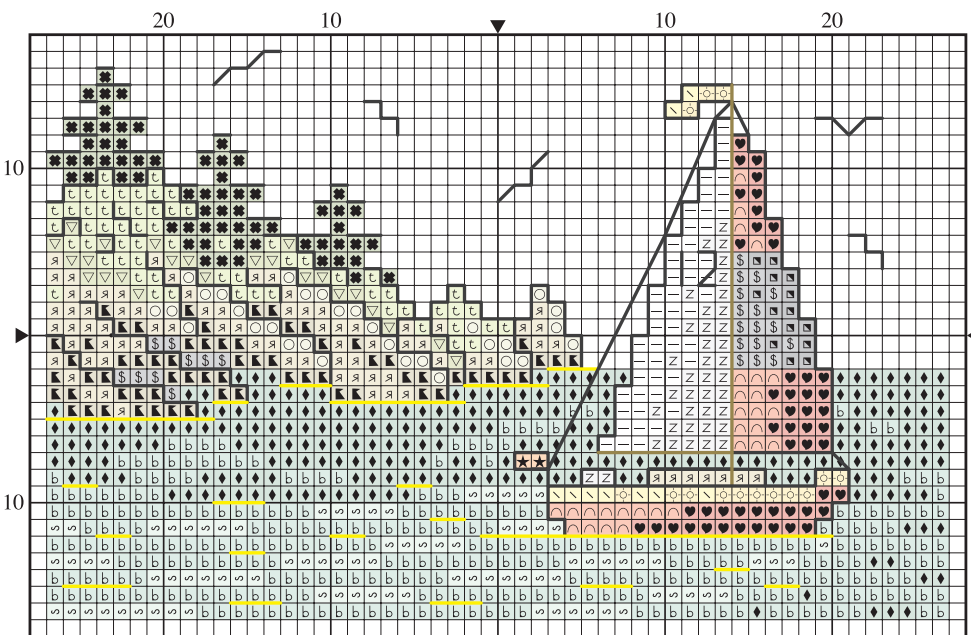
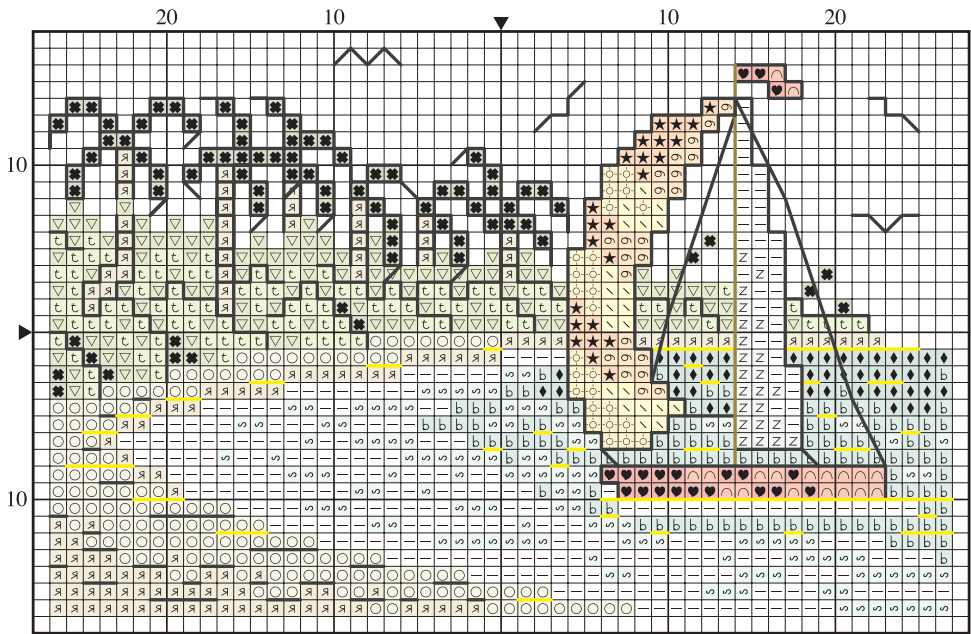


gathered.

Designed by Debra Page



Boats at sea cross stitch patterns



Boats at sea key

✕ Cross stitch in two strands

	DMC	Anchor	Madeira	
—	B5200	1	2401	white
♥	321	9046	510	dark red
⌘	414	235	1714	grey
⬛	611	898	2107	dark beige
я	612	832	2108	beige
○	613	831	2109	light beige
◡	666	46	210	bright red
☼	725	305	108	yellow
↘	726	295	109	light yellow
⦿	741	304	202	orange
z	762	234	1804	very light grey
★	947	330	205	dark orange
✪	987	244	1403	dark green
▽	989	241	1401	green
b	992	1072	1202	turquoise
s	993	1070	1111	light turquoise
t	3348	264	1409	light green
⬛	3799	236	1713	dark grey
◆	3814	1074	2706	dark turquoise

✕ Backstitch in one strand

—	3799	236	1713	dark grey
---	------	-----	------	-----------

✕ Backstitch in two strands

—	B5200	1	2401	white
—	318	399	1801	light grey
—	729	890	2209	gold
—	987	244	1403	green

MAXIMUM STITCH COUNT 54 high x 54 wide
DESIGN AREA 14 HPI (28-count evenweave)
 – 10x10cm (3¾x3¾in)
 These designs were stitched using DMC stranded cotton.

