

Baby mitts

Welcome a new baby with these mittens by **Kirstie McLeod.**

**MITTENS
LACE HEART PATTERN
(WRITTEN INSTRUCTIONS)**

- Row 1 (RS) K6, yo, skpo, K7.
- Row 2 and every WS row Purl.
- Row 3 K4, k2tog, yo, K1, yo, skpo, K6.
- Row 5 K3, k2tog, yo, K3, yo, skpo, K5.
- Row 7 K2, k2tog, yo, K5, yo, skpo, K4.
- Row 9 K1, k2tog, yo, K7, yo, skpo, K3.
- Row 11 K2tog, yo, K4, yo, skpo, K3, yo, skpo, K2.
- Row 13 (K1, yo, skpo, K1, K2tog, yo) twice, K3.
- Row 15 K2, yo, sk2po, yo, K3, yo, sk2po, yo, K4.

MITTENS (MAKE 2)

- Cast on 33 sts using 3½mm needles.
- Row 1 (RS) K1, (P1, K1) to end.
- Row 2 P1, (K1, P1) to end.
- Rep Rows 1 and 2, 3 more times.
- Row 9 (RS) K1, (P1, K1) to end.
- Row 10 Purl.
- Row 11 K10, work Row 1 of the Chart or Written Instructions, K to end.
- Row 12 P10, work Row 2 of the Chart or Written Instructions, P to end.

YOU WILL NEED

- DY Choice, Baby Joy DK (55% acrylic, 45% polyamide, 50g/175m) 1 ball of Mint (105)
- A pair of 3½mm needles
- Stitch marker

TENSION

Yarn used knits as DK to this tension: 24 sts and 36 rows to measure 10x10cm (4x4in) over patt using 3½mm needles

MEASUREMENTS

Mittens 10cm (4in) long x 13cm (5in) hand circumference

ABBREVIATIONS

See www.gathered.how



Work cleverly placed decreases and yarn overs to create the sweet hearts on these (apparently tasty) mitts.

Continue to work from the Chart or Written Instructions as set.

When the Chart is finished, cont as folls:

- Next row Purl.
- Next row (K3, skpo) to end. [28 sts]
- Next row Purl.
- Next row (K2, skpo) to end. [21 sts]
- Next row Purl.
- Next row (K1, skpo) to end. [14 sts]
- Next row Purl.
- Next row (Skpo) to end. [7 sts]
- Next row Purl.

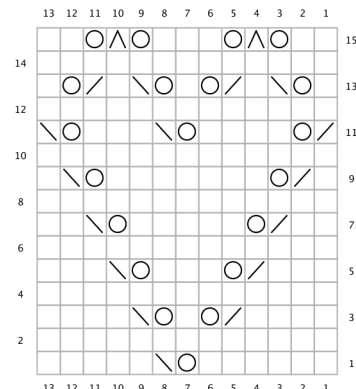


Follow the easy-to-read chart below to knit the lacy heart pattern on the mitts.

TO MAKE UP

With RS facing, thread the yarn through the remaining sts and sew down the seam. Weave in any loose ends.

Chart



Key

- RS: knit
WS: purl
- yo
- △ RS: sl1, k1, pssso
WS: sl1 wyif, p2tog tbl, pssso
- △ RS: k2tog
WS: p2tog
- △ RS: sl1, k2tog, pssso
WS: sl1 wyif, p2tog tbl, pssso
- △ RS: sl1, k1, pssso
WS: p2tog tbl

HOW TO USE OUR CHARTS

Start at the bottom right-hand corner. Read right side rows from right to left and wrong side rows from left to right. A row of squares represents a row of knitting.