

WITH LOVE

Add a handmade touch to tying the knot with **Sarah Murray's** stunning lace ring pillow.



not Attending Any Weddings
this year? Try stuffing this
pillow with Lavender instead
And use it to keep your yarn
stash nice And Fresh!

Tip Tension is just as important when sewing up as it is when knitting. Make sure you don't pull your stitches too tightly or leave them too loose, otherwise the seam could bunch up or be a little holey. It may help to lie your work on a flat surface when you're sewing up.



YOU WILL NEED

- King Cole, Merino Blend DK (100% wool, 50g/104m)
1 ball of White (001)
- A pair of 3.75mm needles
- A length of ribbon (approx 40cm long)
- Stuffing

For yarn stockists contact
King Cole 01756 703670
www.kingcole.com

TENSION

Yarn used knits as DK to this tension: 23 sts and 32 rows to measure 10x10cm (4x4in) over st st using 3.75mm needles

SIZE

Cushion 10 x 10cm
Border 3cm deep, to fit around edge of cushion

ABBREVIATIONS

See www.gathered.how

We really love this sweet little ring pillow – it's perfect for soon-to-be newlyweds. Try making it your own by knitting the border in another colour. With such a simple chart to follow, we reckon you could knit it up in a few crafternoons!



NOTES

The cushion pad can be used with either side as the right side. Sarah made the pillow with one side with the heart motif in stocking stitch and the other side in reverse stocking stitch.

At the given tension, there are approximately 5 border pattern repeats along each edge of the cushion (a total of 20 pattern repeats).

CUSHION (MAKE 2 SIDES)

Cast on 23 sts using 3.75mm needles.

Begin working from Chart, reading RS rows from right to left and WS rows from left to right, until all 32 Chart rows have been worked.

Cast off.

BORDER

Cast on 5 sts using 3.75mm needles.

Foundation row Knit.

Row 1 Sl1, K1, yo, k2tog, kfb. [6 sts]

Row 2 Purl.

Row 3 Sl1, K2, yo, k2tog, kfb. [7 sts]

Row 4 Purl.

Row 5 Sl1, K3, yo, k2tog, kfb. [8 sts]

Row 6 Purl.

Row 7 Sl1, K4, yo, k2tog, kfb. [9 sts]

Row 8 Cast off 4 sts, purl to end. [5 sts]

Rows 1–8 form border pattern.

Repeat until the border is long enough to fit all the way around the side seam of the cushion.

Cast off rem sts.

TO MAKE UP

Join side seams of cushion on three sides, stuff lightly then close remaining seam using mattress stitch. Pin border around the side seam of the cushion, so that the cast-on and cast-off edges meet at the bottom centre of the cushion. Ease the border around the corners and sew in to place. Thread the ribbon so that it lies in the centre of the heart between the two lobes. Use the ribbon to secure the rings when desired.



The frilly lace edging is knitted separately and joined on after sewing up the pillow.

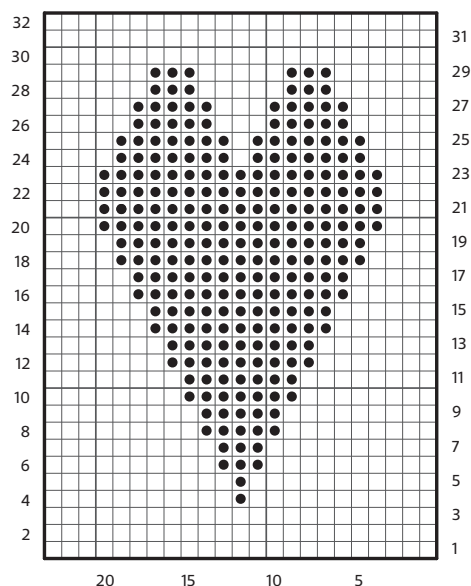


Use a ribbon in the bride-to-be's favourite colour to get that perfect finishing touch.

HOW TO USE OUR CHARTS

Start at the bottom right-hand corner. Read right side rows from right to left and wrong side rows from left to right. A row of squares represents a row of knitting.

Chart



Key

- K on RS; P on WS
- P on RS; K on WS