

GIFTS GALORE

If you need ideas for festive presents, cast on **Ann Franklin's** jolly stocking and fill it with goodies for your loved ones





TAKE ON A CHALLENGE

YOU WILL NEED

- King Cole Comfort Chunky (60% acrylic, 40% nylon, 100g/106m), 1 ball of each:
 - Yarn A** Claret (1506)
 - Yarn B** White (421)
 - Yarn C** Aqua (427)
- A pair of 6mm knitting needles

TENSION

14 sts and 20 rows to measure 10x10cm (4x4in) over stocking stitch using 6mm needles

MEASUREMENTS

Length 58cm (23in)
Width 16cm (6½in)

ABBREVIATIONS

See www.gathered.how

WHERE TO BUY

For yarn stockists contact
King Cole 01756 703670
www.kingcole.com

OR YOU COULD TRY...

Love Crafts 01409 404010
 or www.lovecrafts.com
 Wool4less 07895 838905
 or www.wool4less.co.uk

HOW TO USE OUR CHARTS

Start at the bottom right-hand corner. Read right side rows from right to left and wrong side rows from left to right. A row of squares represents a row of knitting.

KEY

- Yarn A
- Yarn B
- Yarn C
- Repeat

CHART A

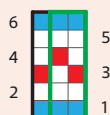


CHART B

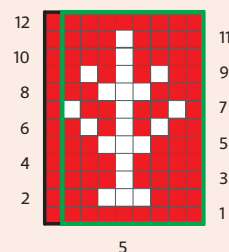


CHART C



FAIR ISLE STOCKING

Note This Christmas stocking is knitted flat and is generously sized to allow room for plenty of stocking fillers! It uses the Fair Isle technique (stranded colourwork) where two colours are used across the whole row. The unused colour is carried across any stitches worked in the other colour at the back of the work. Generally, where the yarn is stranded across more than 5 sts (or 2.5cm), the strands need to be caught up in the work to avoid over-long stranding at the back of the work. When working in two colours it is important that how you cross the colours is consistent throughout the pattern, eg cross Yarn A over Yarn B throughout.

STOCKING

FOOT

Cast on 8 sts using 6mm needles and Yarn A.

Row 1 (RS) K1, *kfb; repeat from * to last st, K1. [14 sts]

Row 2 and every alt row Purl.



A flash of blue adds a frosty touch to your Christmas stocking

"Traditional Fair Isle at Christmas is always a welcome sight and this chunky stocking is filled with detail and super quick to knit for all the family."

KIRSTIE MCLEOD, EDITOR



- Row 3** *Kfb, K1; repeat from * to the end of the row. [21 sts]
- Row 5** *Kfb, K2; repeat from * to the end of the row. [28 sts]
- Row 7** *Kfb, K3; repeat from * to the end of the row. [35 sts]
- Row 9** *Kfb, K4; repeat from * to the end of the row. [42 sts]
- Row 11** *Kfb, K5; repeat from * to the end of the row. [49 sts]
- Row 12** Purl.

Joining in and breaking off yarns as required, work Chart A, Chart B, Chart C and Chart D. Continue in Yarn A.

HEEL (FIRST HALF)

- Heel row 1 (RS)** K12, W&T.
- Heel row 2 and every alt row** Sl1, purl to the end of the row.
- Heel row 3** K10, W&T.
- Heel row 5** K8, W&T.
- Heel row 7** K6, W&T.
- Heel row 9** K4, W&T.
- Heel row 11** K5, W&T.
- Heel row 13** K7, W&T.
- Heel row 15** K9, W&T.
- Heel row 17** K11, W&T.
- Heel row 18** Sl1, purl to the end of the row.
- Row 45** Knit.

HEEL (SECOND HALF)

- Heel row 1 (WS)** P12, W&T.
- Heel row 2 and every alt row** Sl1, knit to the end of the row.
- Heel row 3** P10, W&T.
- Heel row 5** P8, W&T.
- Heel row 7** P6, W&T.
- Heel row 9** P4, W&T.

CHART D

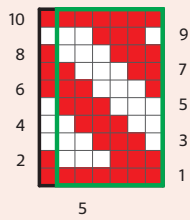


CHART F

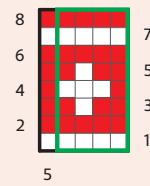


CHART H

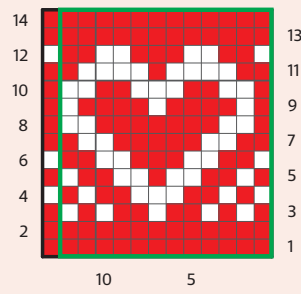


CHART E

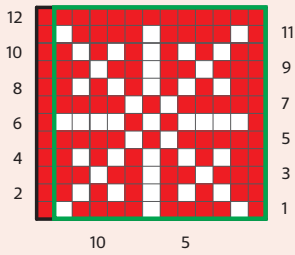


CHART G

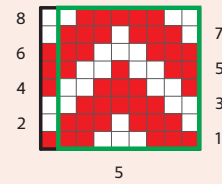
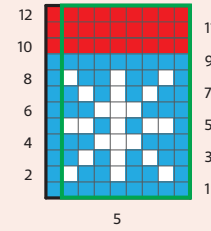


CHART I



Heel row 11 P5, W&T.

Heel row 13 P7, W&T.

Heel row 15 P9, W&T.

Heel row 17 P11, W&T.

Heel row 18 Sl1, knit to the end of the row.

Row 46 Purl.

LEG

Work Chart E, Chart F, Chart G, Chart H and Chart I.

TOP

Row 101 K1, *P1, K1; repeat from * to the end of the row.

Row 102 P1, *K1, P1; repeat from * to the end of the row.

Repeat the last 2 rows twice more. [6 rib rows worked]

Cast off in pattern.

LOOP

Cast on 20 sts using 6mm needles and Yarn B.

Cast off.

MAKING UP

1 Join the cast-on edge into a closed circle by sewing a running stitch across the row and pulling the stitches tight.

2 Join the main seam, taking care to match the rows.

3 Fold the loop in half and sew both ends to top back of stocking.

4 Neaten all ends and block gently to measurements, following any yarn care instructions on the ball band. 🧶



Chunky knit Fair Isle works up super quick, giving you time to knit for all your favourite festive elves