



YOU WILL NEED

■ Use 4ply yarn from your stash:

Yarn A White

Yarn B Red

■ A pair of 3mm needles

■ Toy stuffing

TENSION

Yarn used knits as 4ply to this tension:
28 sts and 36 rows to measure 10x10cm
(4x4in) over st st using 3mm needles

MEASUREMENTS

8cm (3¼in) tall

ABBREVIATIONS

See www.gathered.how



Bauble bling!

Cast on **Kirstie McLeod's** Scandi-style decoration using yarn from your stash.

Key

□ K on RS; P on WS in Yarn A

■ K on RS; P on WS in Yarn B

Chart A

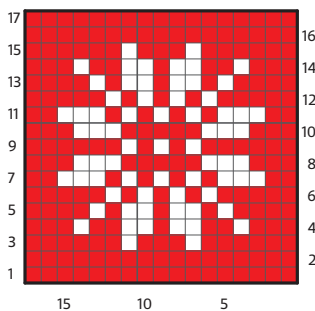


Chart B

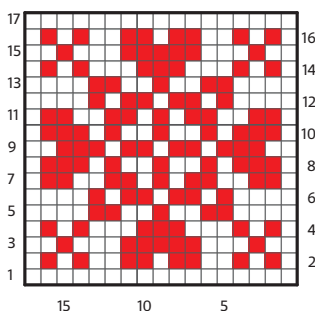
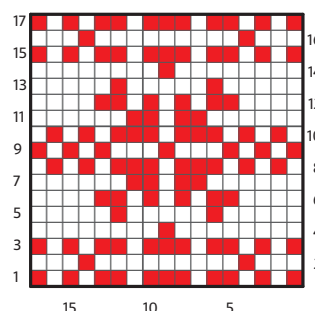


Chart C



Every household has their favourite time of year, and here at the *Simply Knitting* office Christmas wins hands down. This year join our merrymaking by knitting one of these bold red and white baubles using leftover yarn from other projects!

BAUBLE

Cast on 12 sts using 3mm needles and Yarn A. (Note: If you are knitting your bauble using Charts B or C then you should start with Yarn B instead of Yarn A – reversing the colourway from Chart A.)

Row 1 and every alt row (WS) Purl.

Row 2 *Kfb, K1, kfb; rep from * 3 more times. [20 sts]

Row 4 *Kfb, K3, kfb; rep from * 3 more times. [28 sts]

Row 6 *Kfb, K5, kfb; rep from * 3 more times. [36 sts]

Row 8 *Kfb, K7, kfb; rep from * 3 more times. [44 sts]

Row 10 *Kfb, K9, kfb; rep from * 3 more times. [52 sts]

Row 12 *Kfb, K11, kfb; rep from * 3 more times. [60 sts]

Row 14 *Kfb, K13, kfb; rep from * 3 more times. [68 sts]

Work Row 1 of Chart A, B or C, repeating

17 st patt 4 times. Cont working Chart as set until all 17 rows of Chart are complete.

Break Yarn B and cont in Yarn A only.

Row 1 (RS) *Sl1, K1, pss0, K13, k2tog; rep from * 3 more times. [60 sts]

Row 2 and every alt row (WS) Purl.

Row 3 *Sl1, K1, pss0, K11, k2tog; rep from * 3 more times. [52 sts]

Row 5 *Sl1, K1, pss0, K9, k2tog; rep from * 3 more times. [44 sts]

Row 7 *Sl1, K1, pss0, K7, k2tog; rep from * 3 more times. [36 sts]

Row 9 *Sl1, K1, pss0, K5, k2tog; rep from * 3 more times. [28 sts]

Row 11 *Sl1, K1, pss0, K3, k2tog; rep from * 3 more times. [20 sts]

Row 13 *Sl1, K1, pss0, K1, k2tog; rep from * 3 more times. [12 sts]

Cast off.

With RS facing, sew up the seam until about half way. Turn RS out and stuff. Sew the seam closed. 🧶

HOW TO USE OUR CHARTS

Start at the bottom right-hand corner. Read right-side rows from right to left and wrong-side rows from left to right. A row of squares represents a row of knitting.