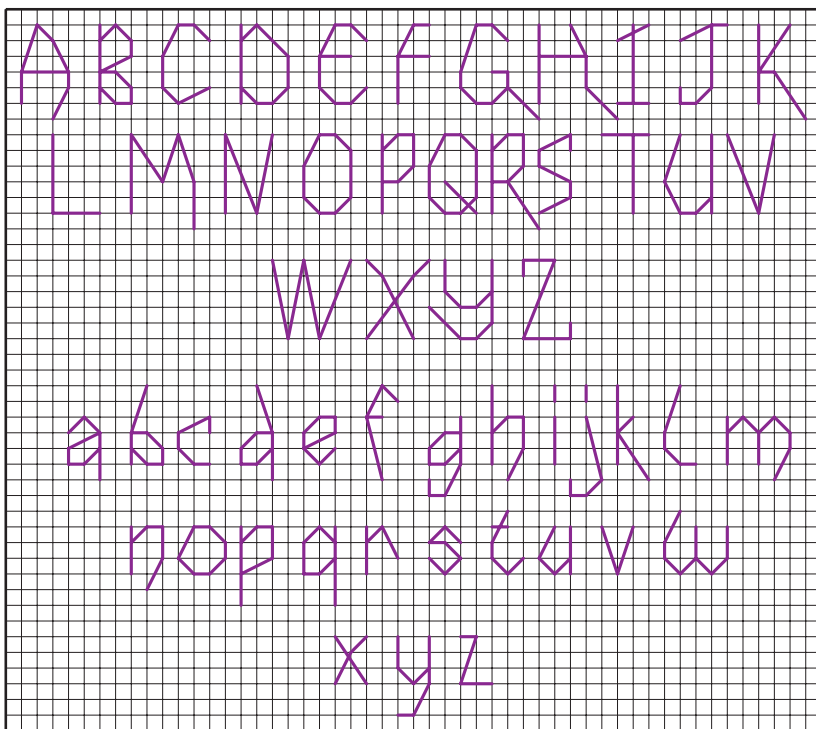


DESIGNED BY RHONA NORRIE



### Easy Christmas X stitch

✦ Cross stitch in two strands

	DMC	Anchor	Madeira
∩	B5200	1	2401
■	310	403	2400
♥	321	9046	510
T	415	398	1802
▼	699	923	1303
\$	701	227	1305
▽	703	238	1307
⌘	741	304	202
Z	743	302	113
I	762	234	1804
⊗	797	139	913
⊖	798	131	912
A	3713	1020	502
×	3801	1098	411

✦ Backstitch in one strands

—	310	403	2400
—	701	227	1305
—	743	302	113
—	3801	1098	411

✦ Backstitch in two strands

—	3801	1098	411
---	------	------	-----

✦ Whole stitches only

gathered.