

COWL KNITTING PATTERN



YOU WILL NEED

- Stylecraft, Alpaca DK (80% acrylic, 20% alpaca, 100g/240m) 1 ball of each:
 - Yarn A Cream (6010)
 - Yarn B Orchid (6012)
 - Yarn C Teal (6018)
 - Yarn D Storm (6014)
 - A set of 4mm circular needles
 - A 4mm crochet hook
- For yarn stockists contact
Stylecraft 01484 848435
www.stylecraft-yarns.co.uk

TENSION

Yarn used knits as DK to this tension: 22 sts and 27 rows to measure 10x10cm (4x4in) over st st using 4mm needles

ABBREVIATIONS

See www.gathered.how



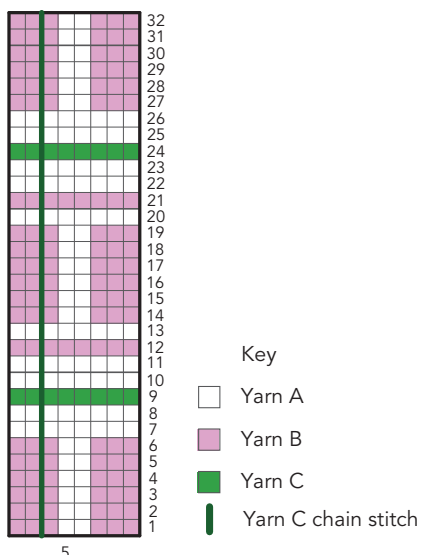
CHECKMATE

*Fresh pastel colours give this tartan cowl a modern makeover. By **Kirstie McLeod**.*

HOW TO USE OUR CHARTS

Start at the bottom right-hand corner. Read all rounds from right to left. A row of squares represents a row of knitting.

Chart



K COWL

Cast on 136 sts using 4mm needles and Yarn D. Join into the round and place a stitch marker.

Round 1 K1, P1 to end of round. Work 4 more rounds in K1, P1 rib.

Change to Yarn A.

Round 6 K1, P1 to end of round. Work 1 more round in K1, P1 rib.

Change to Yarn D.

Round 8 K1, P1 to end of round. Work 4 more rounds in K1, P1 rib.

Working in stocking stitch throughout, work from the Chart using the Fair Isle technique starting with row 1. Continue working from the Chart for 32 rounds.

Next round K1, P1 to end of round. Work 4 more rounds in K1, P1 rib.

Change to Yarn A.

Next round K1, P1 to end of round. Work 1 more round in K1, P1 rib.

Change to Yarn D.

Next round K1, P1 to end of round. Work 4 more rounds in K1, P1 rib.

Cast off knitwise.

TO MAKE UP

Weave in all the loose ends. Using the Chart as reference and a 4mm hook, chain stitch through the knitting to make the stripes using Yarn C. Weave in all the loose ends on the WS. Press and block.