

BLOSSOM

Add a little homespun style to your bedroom with **Monica Russel's** pretty cushion.

A SWEET
SPRING HOME
UPDATE!

THIS PROJECT WOULD SUIT A
CONFIDENT FAIR ISLE BEGINNER,
AS IT HAS A REPETITIVE,
RHYTHMIC STITCH PATTERN



Tip Work buttonholes to fit buttons and don't look for a button to fit the hole – otherwise you'll have to take the whole cover with you to the shop! If your buttonholes are too big, though, you can make them smaller by using blanket stitch around the edges.



YOU WILL NEED

- Sublime, Evie (94% cotton, 6% nylon, 50g/115m)
- 2 balls of **Yarn A** Nougat (0508)
- 1 ball of each:

Yarn B Zola (0515)

Yarn C Haze (0512)

Yarn D Luna (0516)

- A pair of 5mm needles
- 6 medium sized buttons
- A 36 x 36cm (14 x 14in) cushion pad

For yarn stockists contact

Sublime 01924 369666

www.sublimeyarns.co.uk

TENSION

Yarn used knits as aran to this tension: 20 sts and 22 rows to measure 10x10cm (4x4in) over st st using 5mm needles

ABBREVIATIONS

For a full list see page 90

SIZE

36 x 36cm (14 x 14in)

NEXT MONTH

Make a matching set of cushions for your home or as a gift! Issue 145, May, will be in the shops from Tuesday 29 March.

Spring is the perfect season to breathe new life into your home, and it's easy to do with just a few balls of yarn and a pair of needles. This pretty Fair Isle pattern in soft pinks and blues reminds us of spring blossoms against the sky, but with ten shades of Sublime Evie to pick from you can change the colours to match your décor!



FRONT

Cast on 63 sts using 5mm needles and Yarn A.

***Row 1** Knit in Yarn A.

Row 2 Purl in Yarn A.

Work rows 1–6 from Chart A, noting the pattern is repeated 21 times across the row.

***Row 9** Knit in Yarn A.

Row 10 Purl in Yarn A.

Work 8 rows from Chart B, noting the pattern is repeated 9 times across the row.**

Rep from * to ** 3 more times.

Next row Knit in Yarn A.

Next row Purl in Yarn A.

Work rows 1–6 from Chart A.

Next row Knit in Yarn A.

Next row Purl in Yarn A.

Cast off.

LOWER BACK

Cast on 63 sts using 5mm needles and Yarn A.

Work as Front from * to ** 3 times.

Work 2 rows st st using Yarn A.

Cast off.

UPPER BACK

Cast on 63 sts using 5mm needles and Yarn A.

Work as Front from * to **.

Next row Knit in Yarn A.

Next row Purl in Yarn A.

Work rows 1–6 from Chart A.

Next row Knit in Yarn A.

Next row Purl in Yarn A.

BUTTONHOLE BORDER

Row 1 *K3, P3; rep from * to last 3 sts, K3.



A row of buttons ensures that the cover fits snugly and is also easy to remove.

Row 2 *P3, K3; rep from * to last 3 sts, P3.

Row 3 K3, P3, K1, cast off 2 sts, P2, K3, P2, cast off 2 sts, K1, P3, K3, cast off 2 sts, K3, P3, K1, cast off 2 sts, P2, K3, P2, cast off 2 sts, K1, P3, cast off 2 sts, P3, K3.


Row 4 Work rib as set casting on 2 sts over where you have cast off on the previous row.

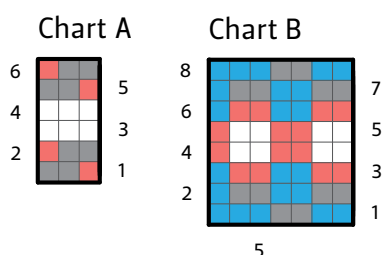
Row 5 *K3, P3; rep from * to last 3 sts, K3.

Row 6 *P3, K3; rep from * to last 3 sts, P3.

Cast off.

TO MAKE UP

Join the lower back to the front with right sides facing using mattress stitch. Join the upper back to the front with the buttonhole rib overlapping the lower back. Sew 6 buttons in place corresponding their placing to the centre of the buttonholes. Weave in all loose ends. 



Key

- Yarn A
- Yarn B
- Yarn C
- Yarn D

HOW TO USE OUR CHARTS

Start at the bottom right-hand corner. Read right side rows from right to left and wrong side rows from left to right. A row of squares represents a row of knitting.