

THE BRETON TOP

SIZES
6-20

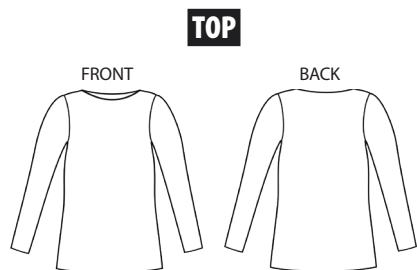
US 4-18
EUR 34-48

THE BRETON TOP

**SIZES
6-20**

US 4 -18
EUR 34-48

Casual and versatile, the French-inspired Breton Top is a comfortable classic that you'll wear again and again.



PACK INCLUDES

- Pattern sheets x 3
- Instruction sheet

YOU WILL NEED

- Main fabric: 2.2mx115cm (2½ydx45in), 1.7mx140cm (2ydx55in)
- Ballpoint sewing machine needle
- Twin ballpoint sewing machine needle
- Matching thread
- Basic sewing kit

NOTES

- Seam allowance 1.5cm (5⁄8in)
- Ballpoint sewing machine needles are essential for sewing with stretch fabrics as they will pass through the fabric smoothly, preventing skipped or uneven stitches
- A walking foot can be used to guide stretch fabric through your sewing machine evenly

FABRIC SUGGESTIONS

- Light- to medium-weight knit fabrics with at least 30% horizontal stretch



SIZE CHART

SIZE	UK	6	8	10	12	14	16	18	20
	US	4	6	8	10	12	14	16	18
	EUR	34	36	38	40	42	44	46	48
TO FIT BUST	cm	81	84	86	89	94	99	107	114
	in	32	33	34	35	37	39	42	45
TO FIT WAIST	cm	63	66	68	71	76	81	89	96
	in	25	26	27	28	30	32	35	38
TO FIT HIPS	cm	89	91	94	96	101	107	114	122
	in	35	36	37	38	40	42	45	48

Simply
Sewing
FRESH IDEAS WITH FABRIC

WWW.SIMPLYSEWINGMAG.COM

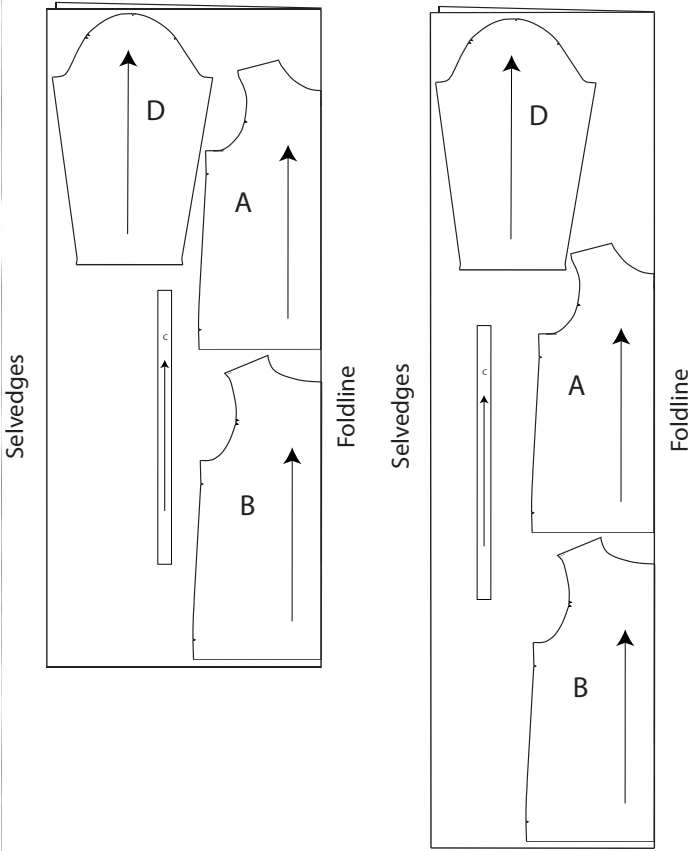
Printed in the UK for Simply Sewing magazine. Supplied by Immediate Media Company Ltd, Bristol, BS1 4ST.
To be used for individual, private home use only and not for commercial or manufacturing purposes.

THE BRETON TOP

CUTTING LAYOUTS

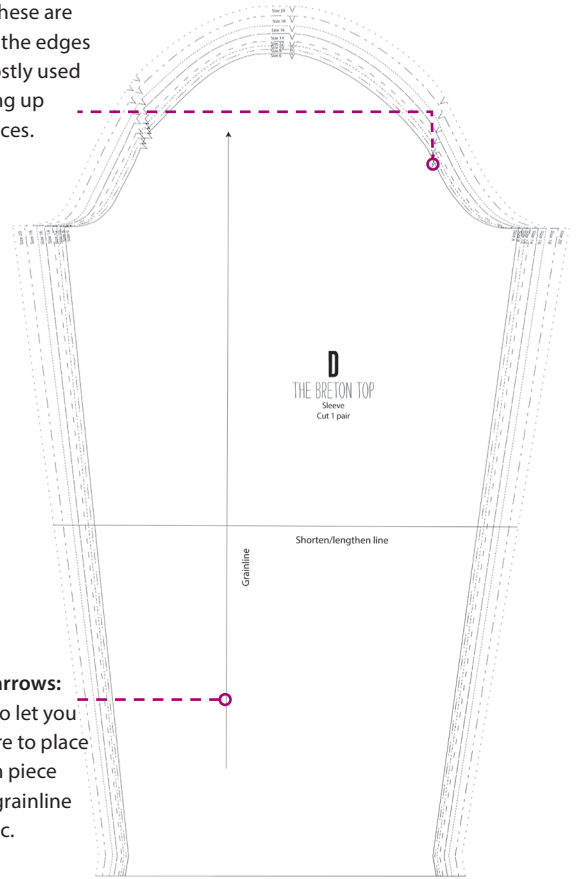
140CM (55IN)
WIDE FABRIC

115CM (45IN)
WIDE FABRIC



PATTERN MARKINGS

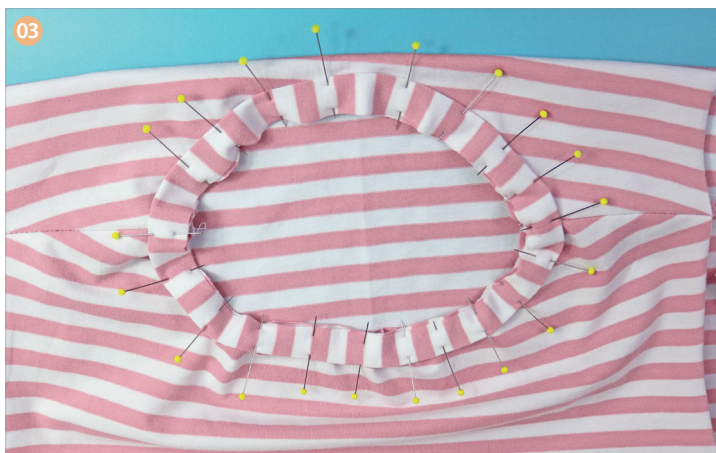
Notches: These are marked on the edges and are mostly used for matching up pattern pieces.



Grainline arrows: These are to let you know where to place the pattern piece along the grainline of the fabric.



THE BRETON TOP



STITCHING TERMS

RS/WS: Right side/wrong side of the fabric. The right side usually has the print, design or texture and the wrong side is usually plain or duller in appearance.

Finish the seams: Finish the raw edges with a zigzag stitch or an overlocker.

Press: Pressing fabric is placing the iron down, holding it for a few seconds, lifting it and placing it down again. Ironing is the movement of sliding the iron back and forth to remove creases.

Seam allowance: The seam allowance is usually working into the pattern. It is the distance from the edge of the fabric to the stitch line. In dressmaking seam allowances of 1.5cm ($\frac{5}{8}$ in) and 1cm ($\frac{3}{8}$ in) are common. Check the pattern envelope to find the seam allowance.

Topstitch: Stitching usually from the right side of the garment to hold seam allowances in place or can be used for decorative purposes.

Ballpoint needle: A ballpoint needle is used for sewing stretch fabrics. The rounded tip allows the head of the needle to pass through the gaps in the fabric weave rather than piercing through them as a universal needle might.

Twin ballpoint needle: A twin ballpoint needle is simply a ballpoint needle in twin needle form allowing you to stitch an evenly spaced double line. Twin needle topstitching is usually used for hemming knit garments and for finishing necklines.

Ballpoint pins: Ballpoint pins can be purchased especially for working with knit fabrics to hold seams in place as you sew.

Walking foot: A walking foot is a special sewing machine foot which evenly feeds fabric through the machine. A walking foot can be especially useful for sewing with knit fabrics as it prevents the top layer of fabric pushing forward and stretching out as it is sewn.

Toile: A test garment, often made from calico or muslin to check the fit or test a pattern before the real fabric is used. Known as a muslin in the US.

CUTTING OUT

Step one From the main fabric cut:

Front Bodice (A): one on fold

Back Bodice (B): one on fold

Neck Binding (C): one

Sleeve (D): one pair

MAKING THE TOP

STITCHING THE BODICE

Step one Finish the shoulder seams of the Front and Back bodice pieces. With RS of the fabric together, stitch the Front and Back bodice pieces together at the shoulder seams. Press the seams open. ⁰¹

Step two Check the Neck Binding against the neckline and cut it to the correct length. It should be about 10% smaller than the neckline in length, to make sure it sits flat against the body, but this will vary depending on the fabric you use. Remember to include a 1cm ($\frac{3}{8}$ in) seam allowance at each end. It is easiest to check the length by carefully pinning it around the neckline.

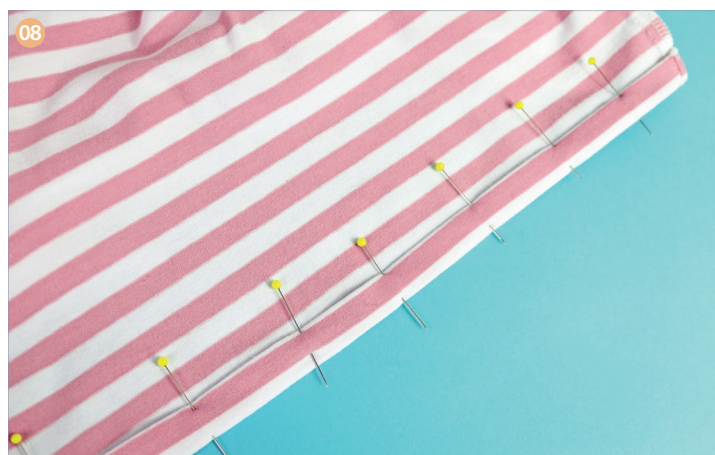
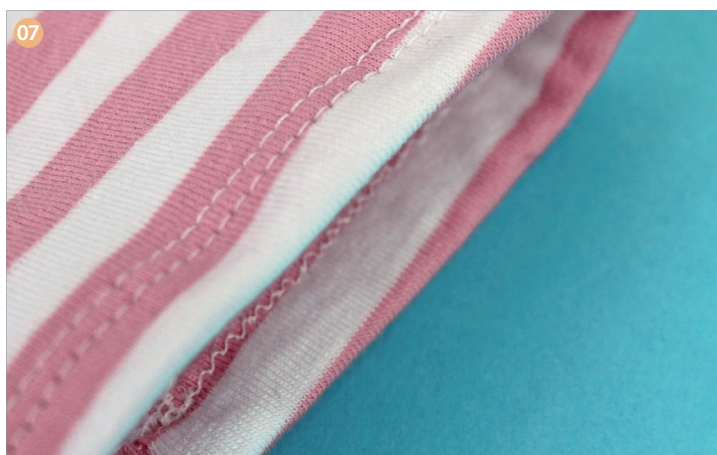
Step three With RS together, stitch the two short ends of the Neck Binding with a 1cm ($\frac{3}{8}$ in) seam allowance and press open. With WS together, press the neck binding in half. ⁰²

Step four With RS together, pin the neck binding in place all around the neckline. Align the seam with one of the shoulder seams. ⁰³

Step five Stitch the neck binding in place with a 1cm ($\frac{3}{8}$ in) seam allowance, sew slowly to avoid stretching the neckline.

Step six Press the seam allowance towards the inside of the bodice and topstitch in place 5mm ($\frac{1}{4}$ in) from the seam with a twin needle. This will hold the seam allowance in place. ⁰⁴

THE BRETON TOP



INSERTING THE SLEEVES

Step one With RS together, pin and stitch the Sleeve head to the armhole of the bodice, using the flat insertion method. This can be achieved by first placing the Sleeve head and bodice RS together at the armhole. Make sure you match the front and back notches on the sleeve head with the corresponding notches on the bodice. Pin and stitch in place along the Sleeve head. Finish the seam and press in place. **05**

Step two With RS of the fabric facing, stitch the underarm and side seams of the bodice. Start at the sleeve hem and finish at the waist of the bodice. Finish the seams and press towards the back. **06**

FINISHING TOUCHES

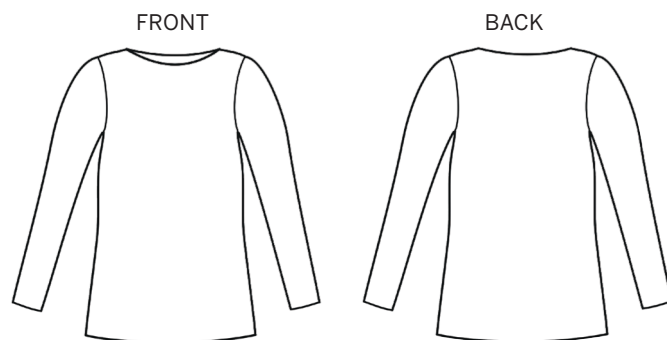
Step one Hem both the sleeves by pressing 5mm (1/4in) then 1cm (3/8in) to the inside. Start and finish stitching at the underarm seam with a twin needle. **07**

Step two Check you are happy with the length of the hem. Press over 5mm (1/4in) and then 1cm (3/8in) to the inside of the garment. Pin all around. **08**

Step three Stitch the hem in place starting and finishing at one of the side seams with a twin needle.

Step four Give your garment a final press.

DIAGRAMS



FINISHED GARMENT MEASUREMENTS

SIZE	UK	6	8	10	12	14	16	18	20
	US	4	6	8	10	12	14	16	18
	EUR	34	36	38	40	42	44	46	48
BUST	cm	80	82.5	85	87.5	92.5	98	105.5	113
	in	31.5	32.5	33.5	34.5	36.5	38.5	41.5	44.5
WAIST	cm	85	87.5	90	92.5	97.5	103	110.5	118
	in	33.5	34.5	35.5	36.5	38.5	40.5	43.5	46.5
HIPS	cm	89	91	94	96	101	107	114	122
	in	35	36	37	38	40	42	45	48