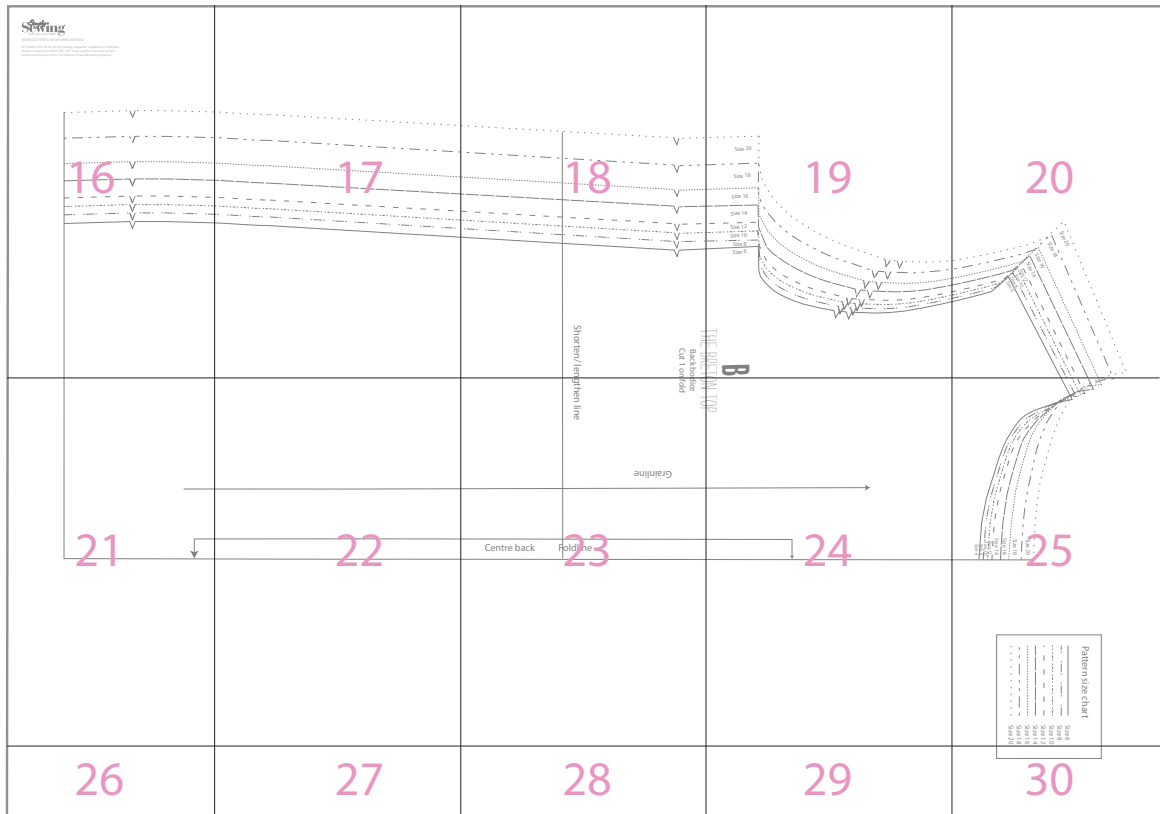
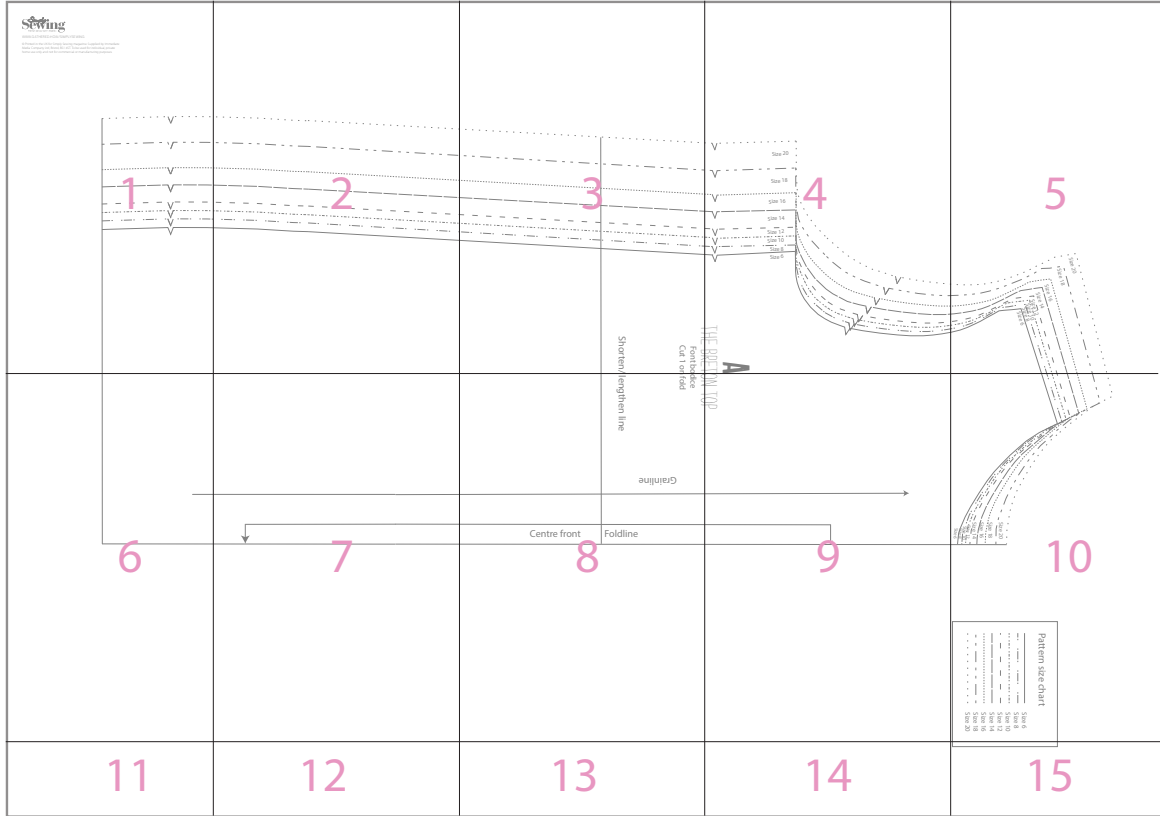


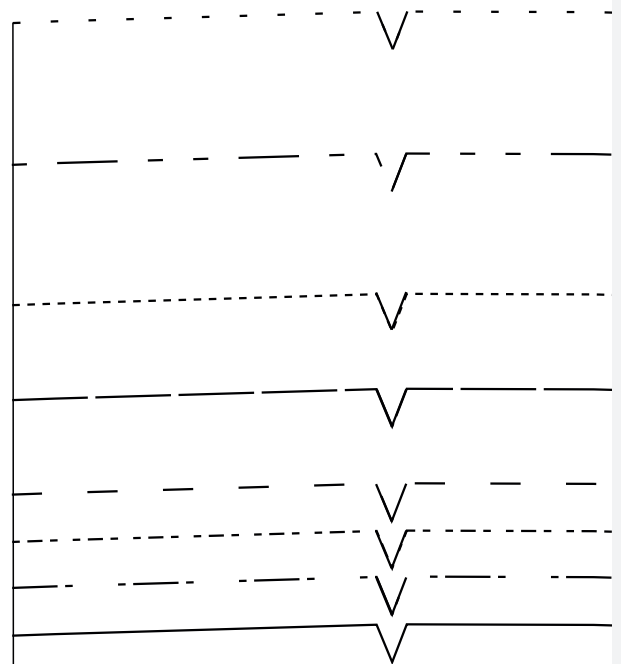
THE BRETON TOP

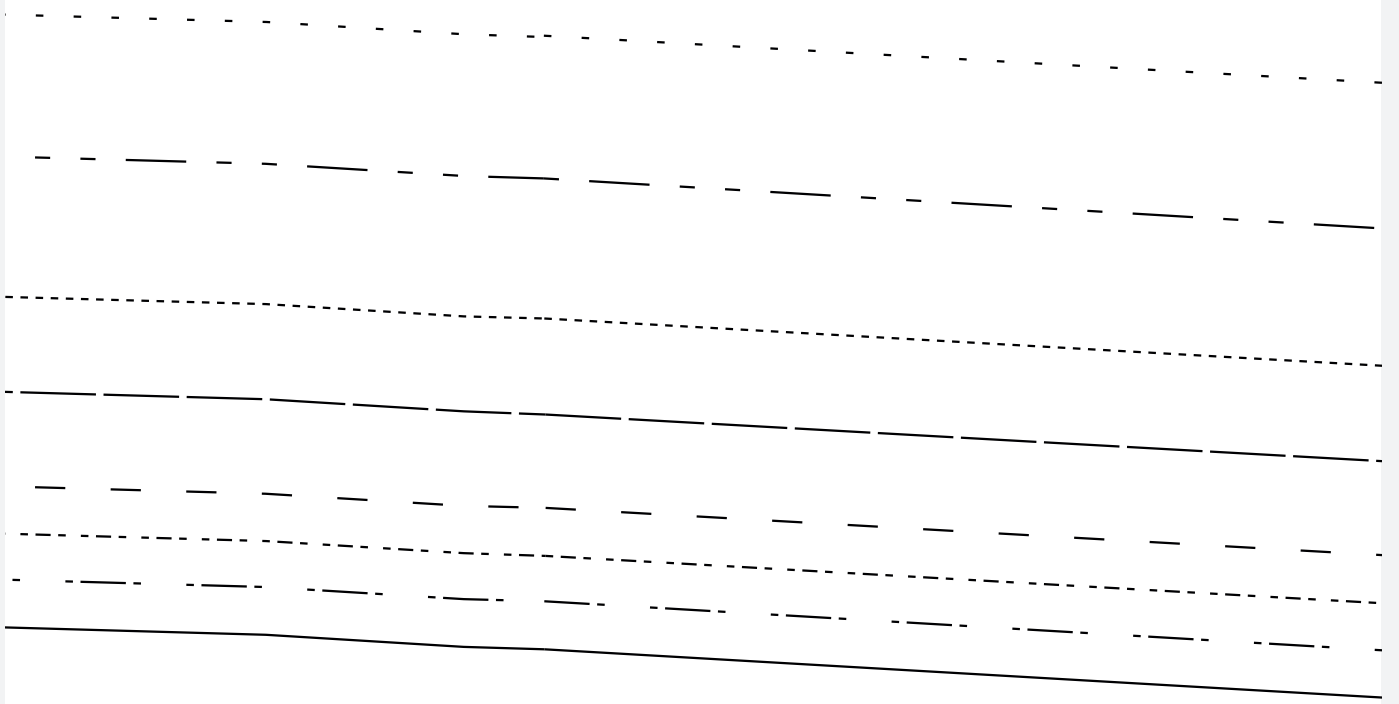
HOW TO PRINT THIS PATTERN

Print out this 30-page PDF on to A4 paper. Trim away the shaded border from each page and position the pages as below to assemble the pattern...



TEST SQUARE
10x10cm

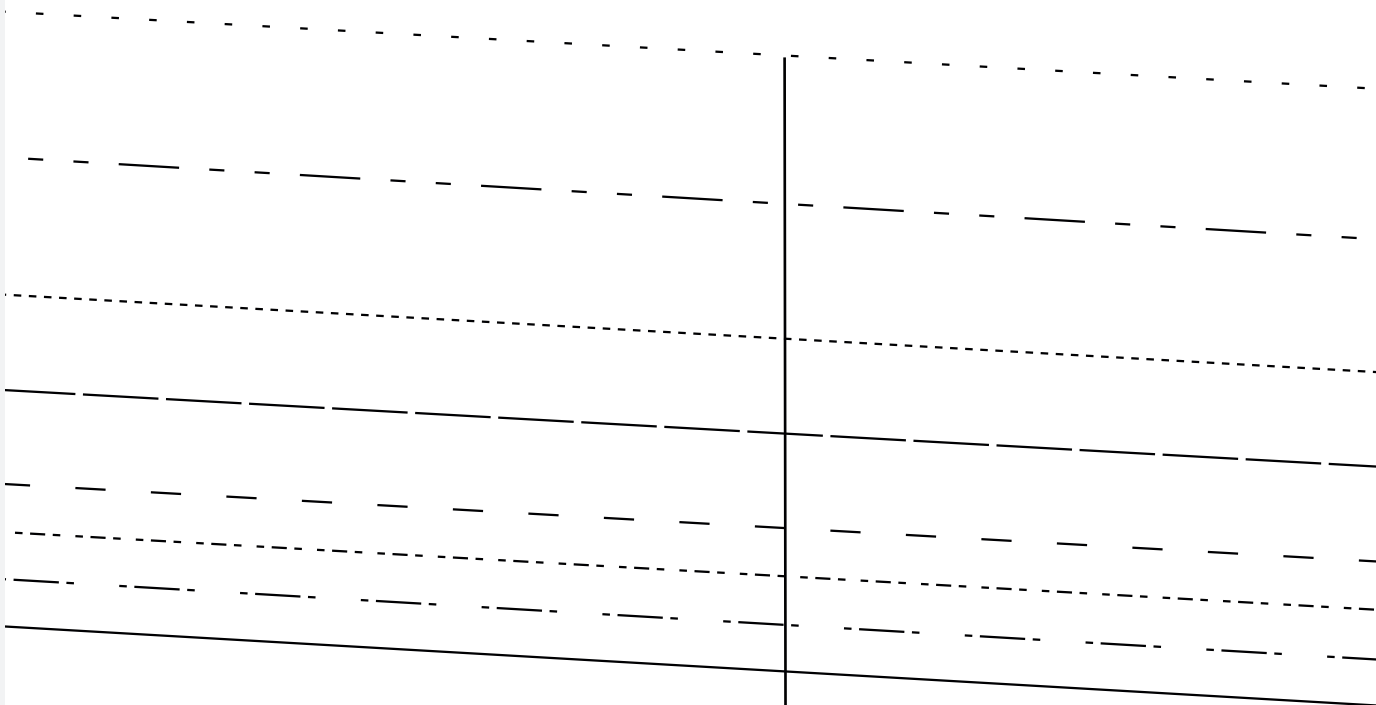


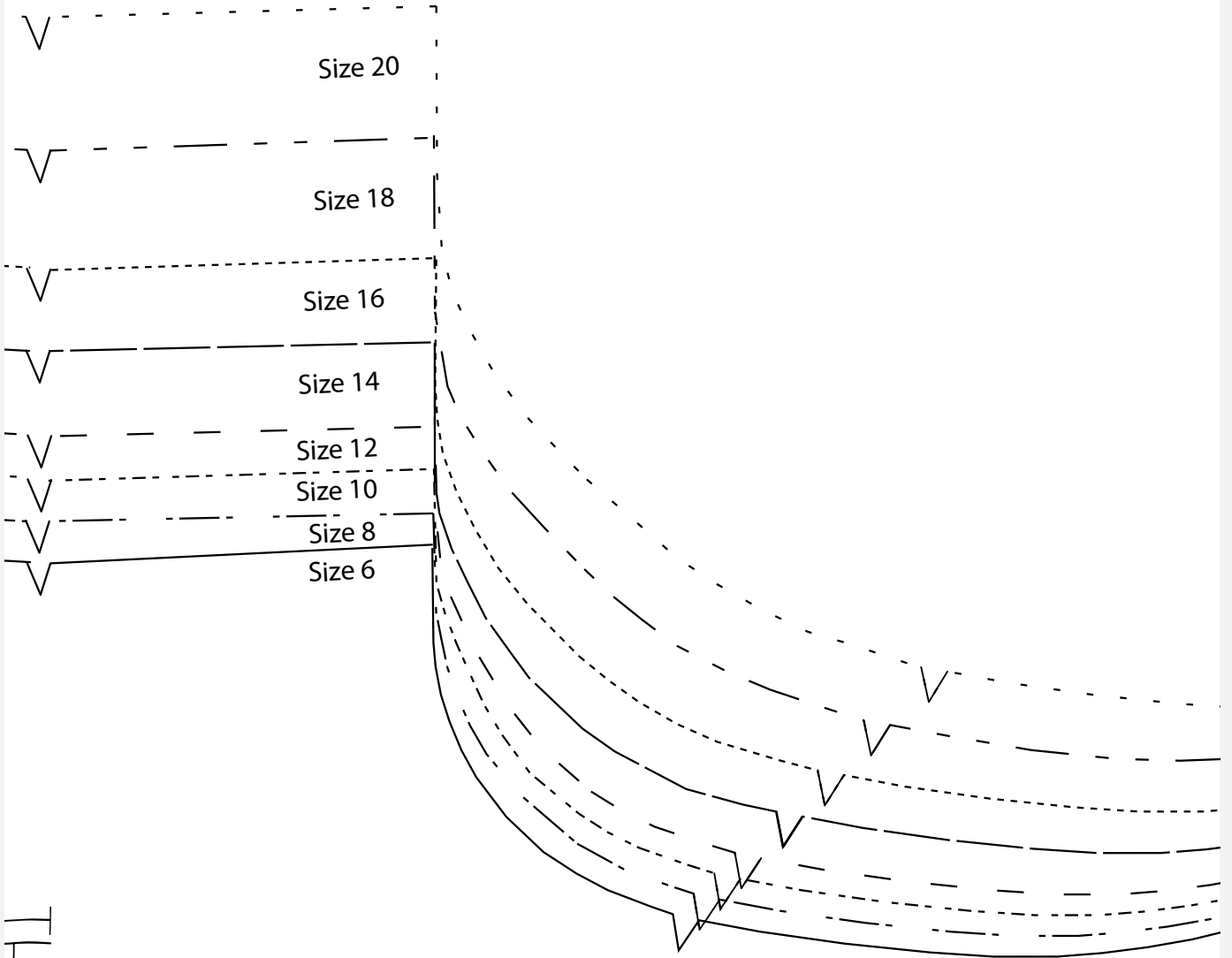


THE DNEIA

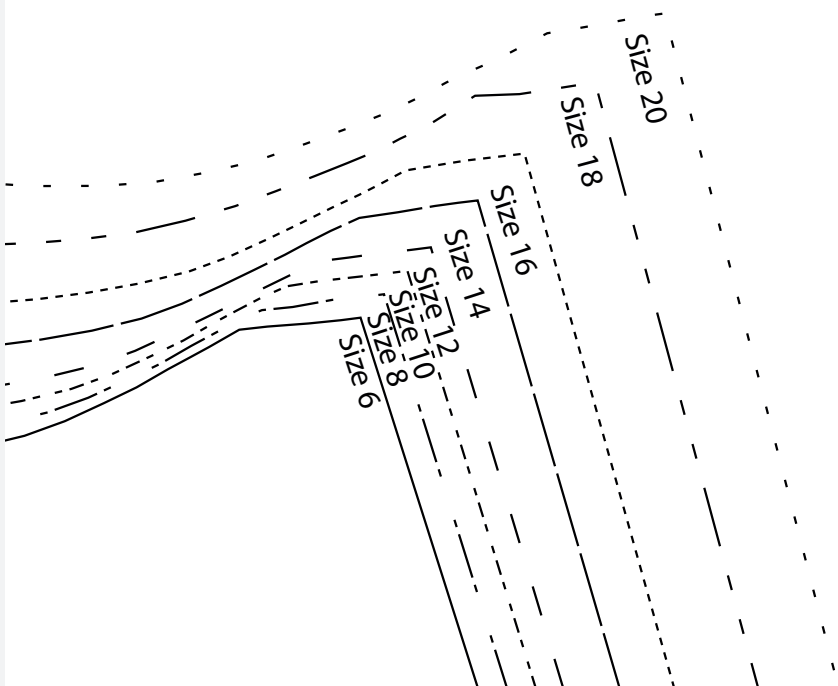
Font box
Cut 1 on

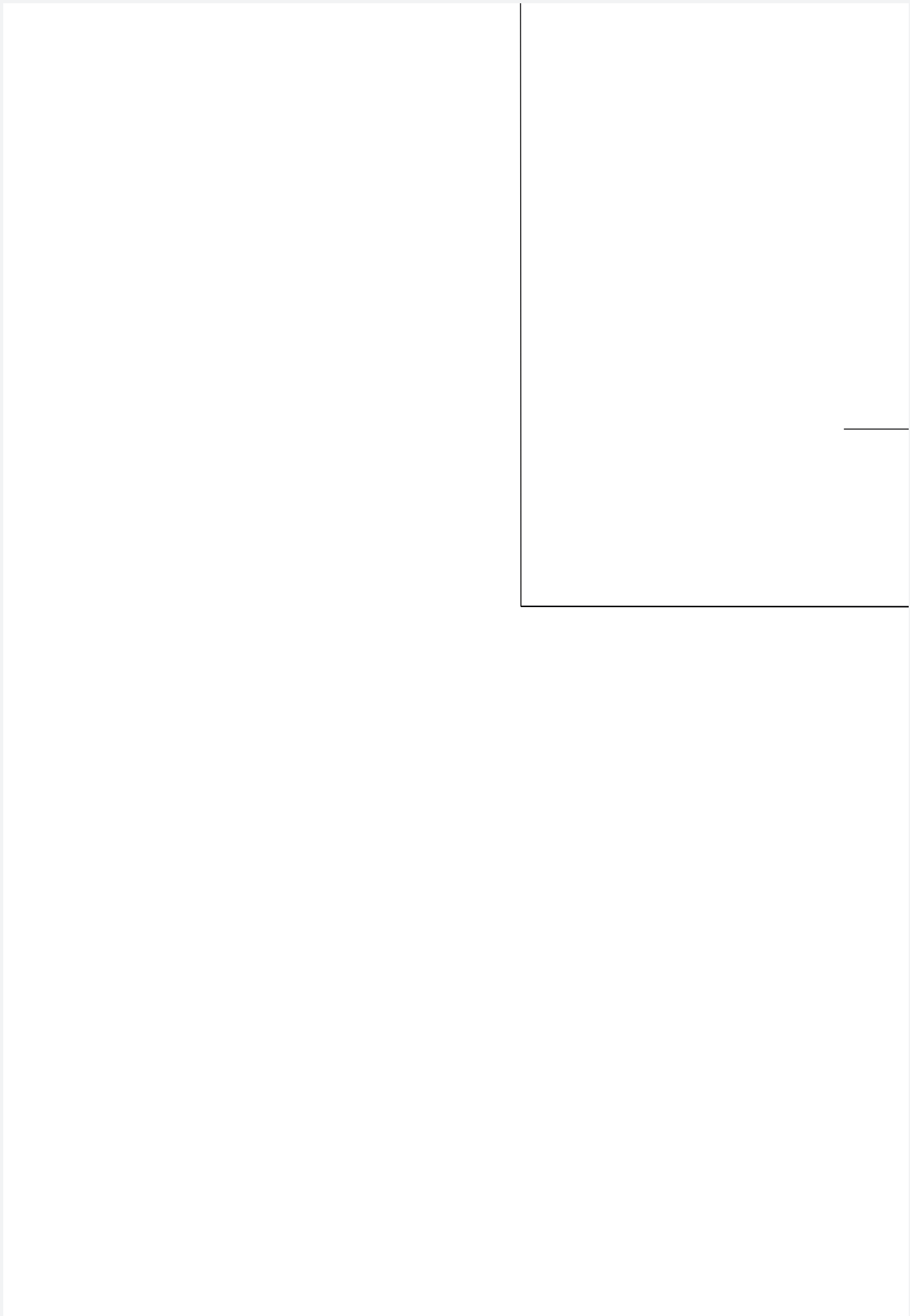
Shorten/





THE RDETY
A







JM 101

rice

fold

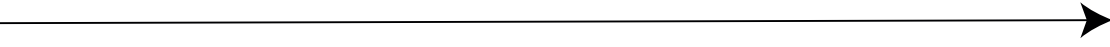
lengthen line

Grainline

Centre front

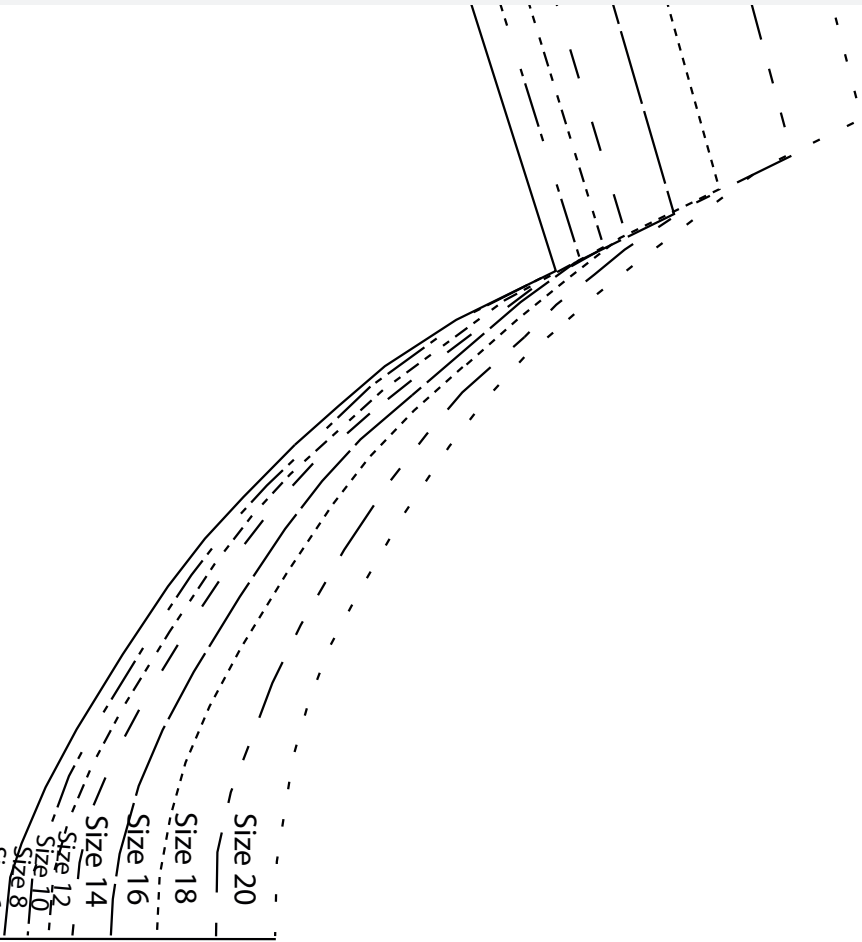
Foldline

MITAD



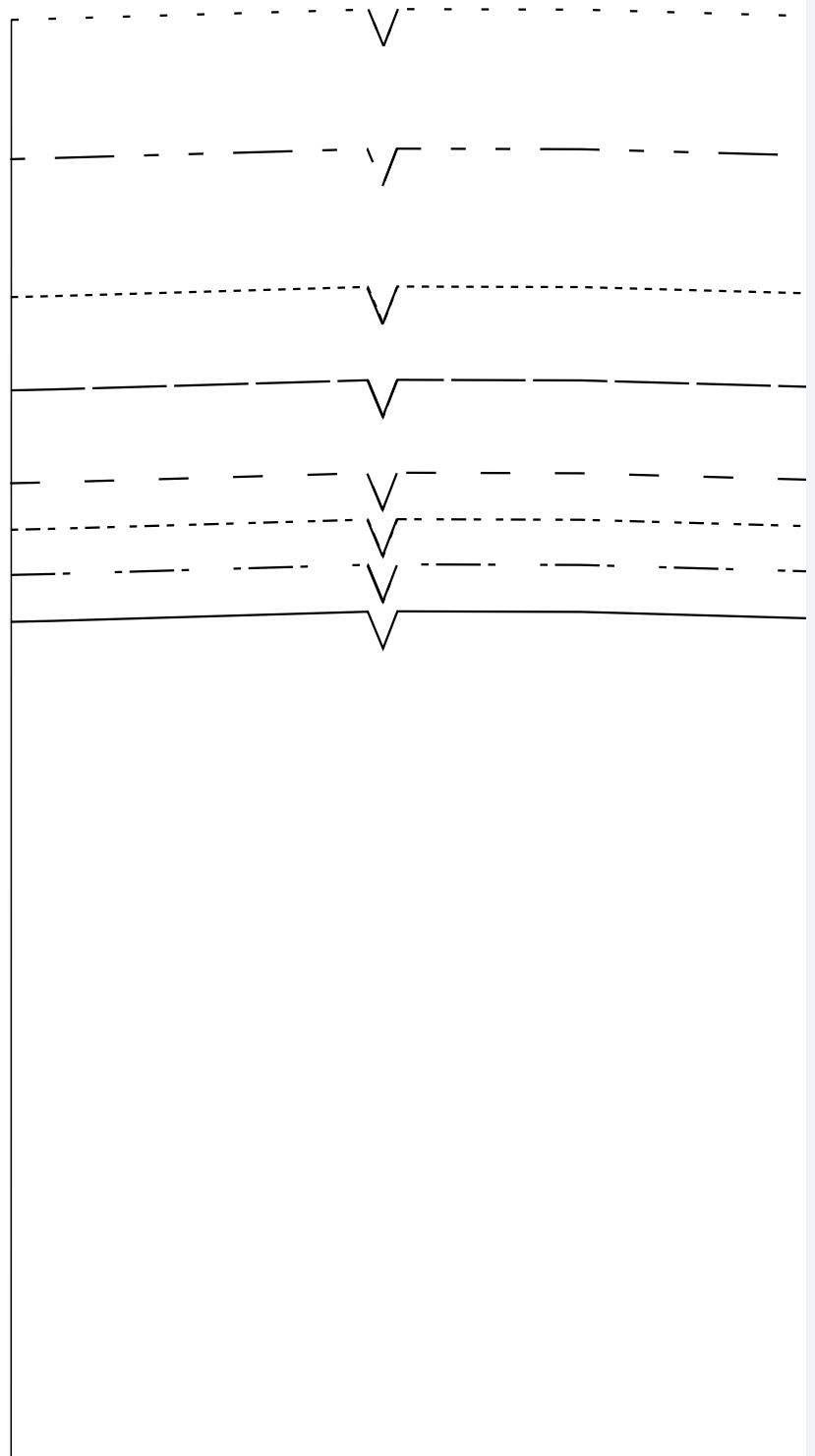
size 6

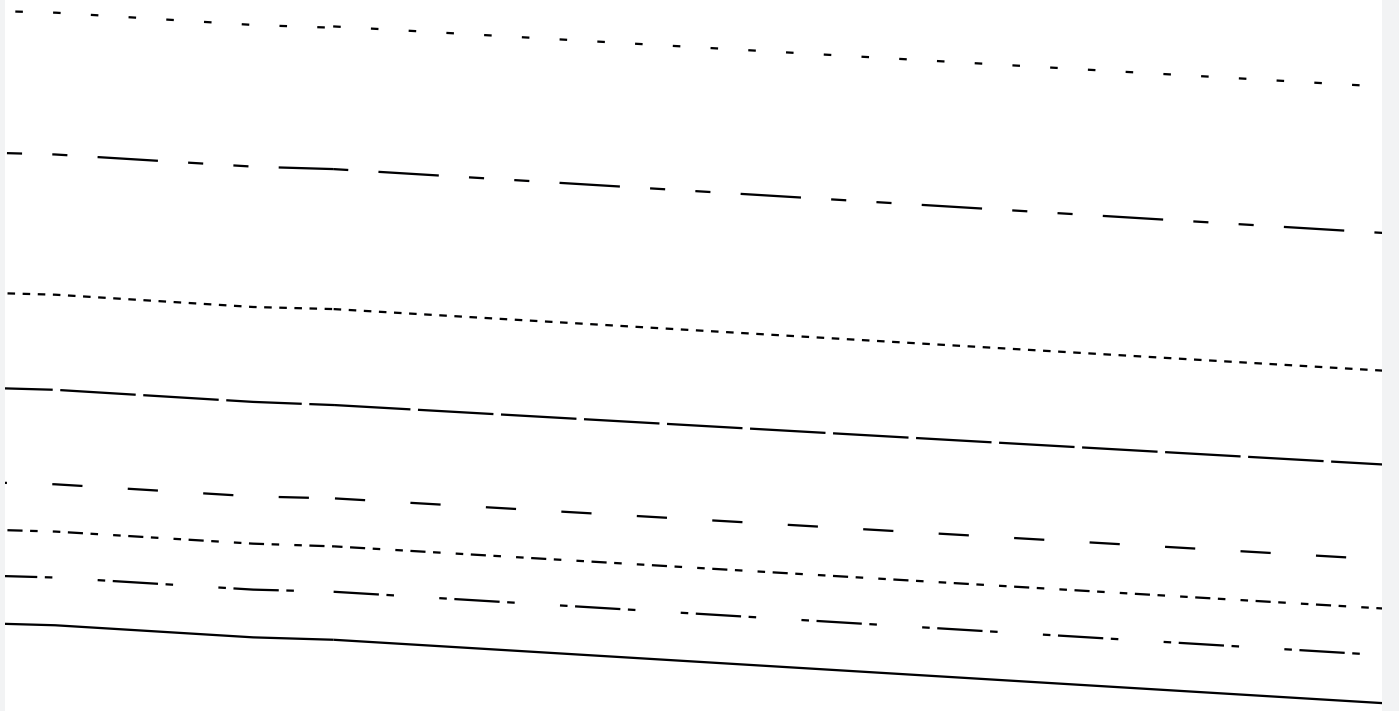




Pattern size chart

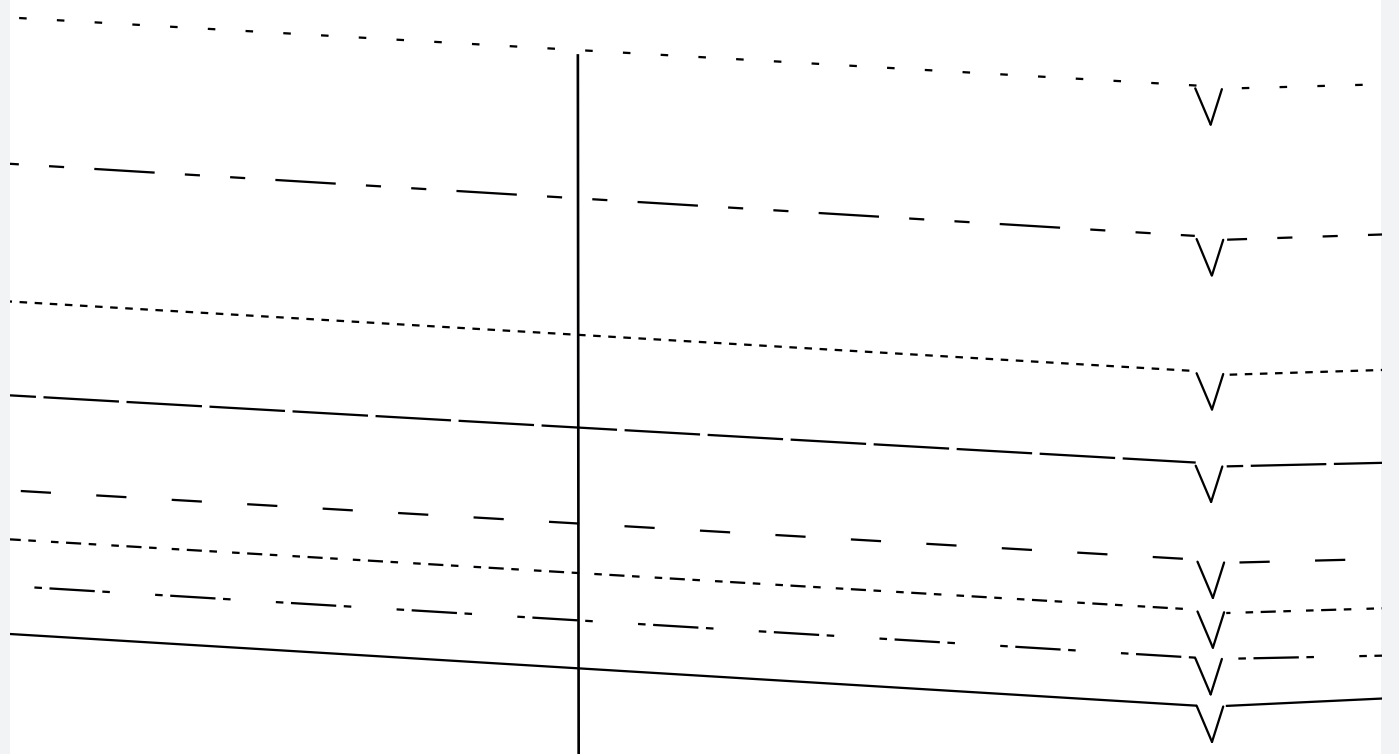
—————	Size 6
- - - - -	Size 8
—————	Size 10
- - - - -	Size 12
—————	Size 14
- - - - -	Size 16
—————	Size 18
- - - - -	Size 20

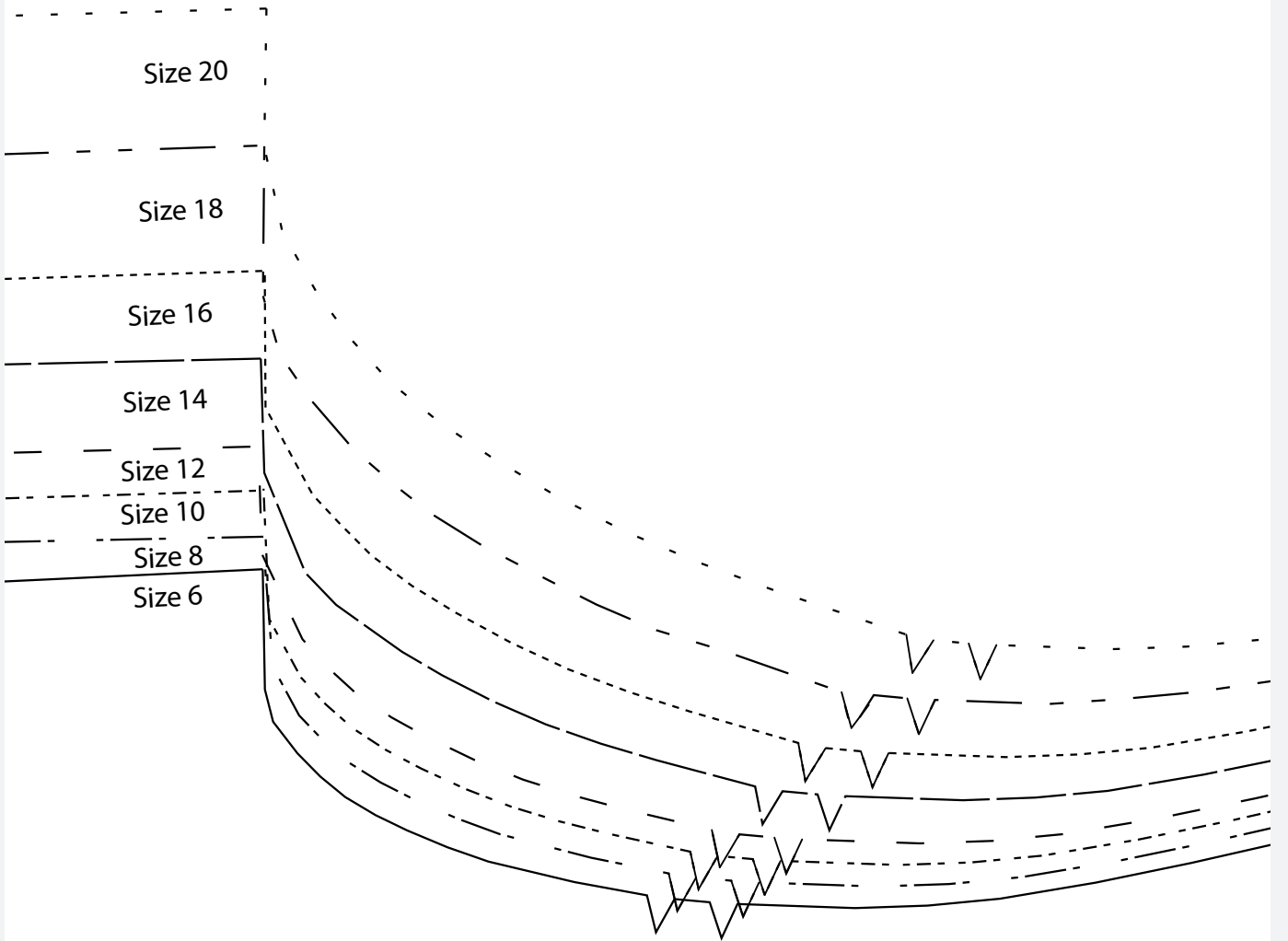




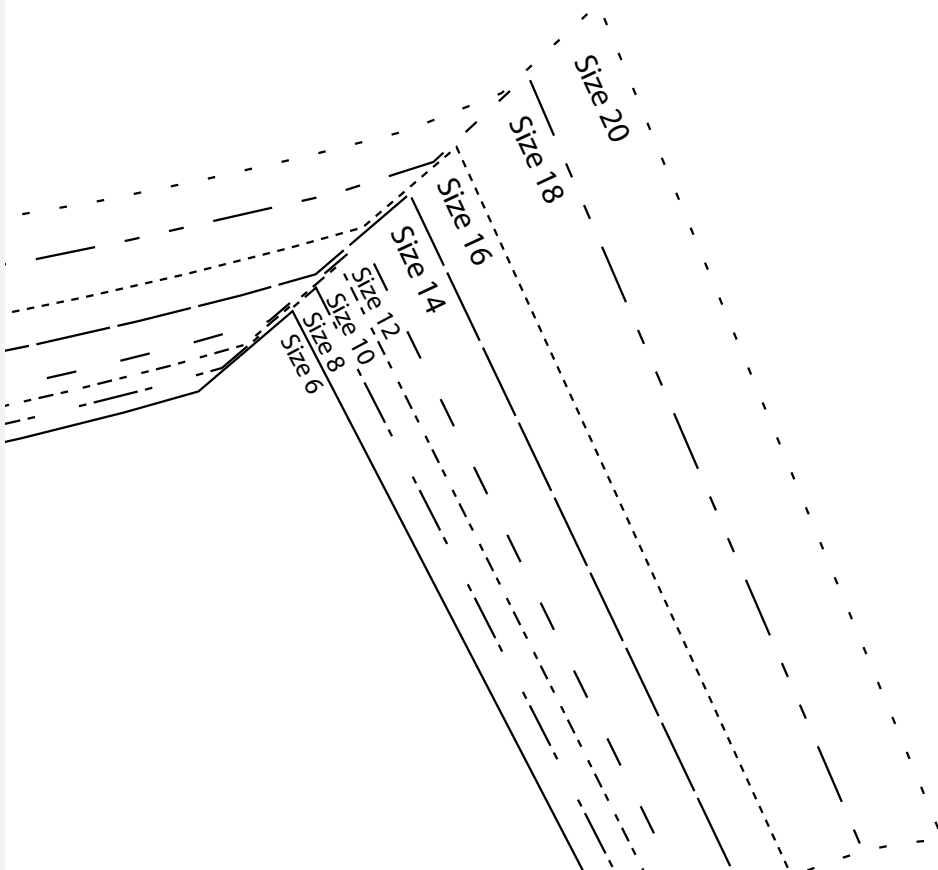
111L DNL11
Back bo
Cut 1 on

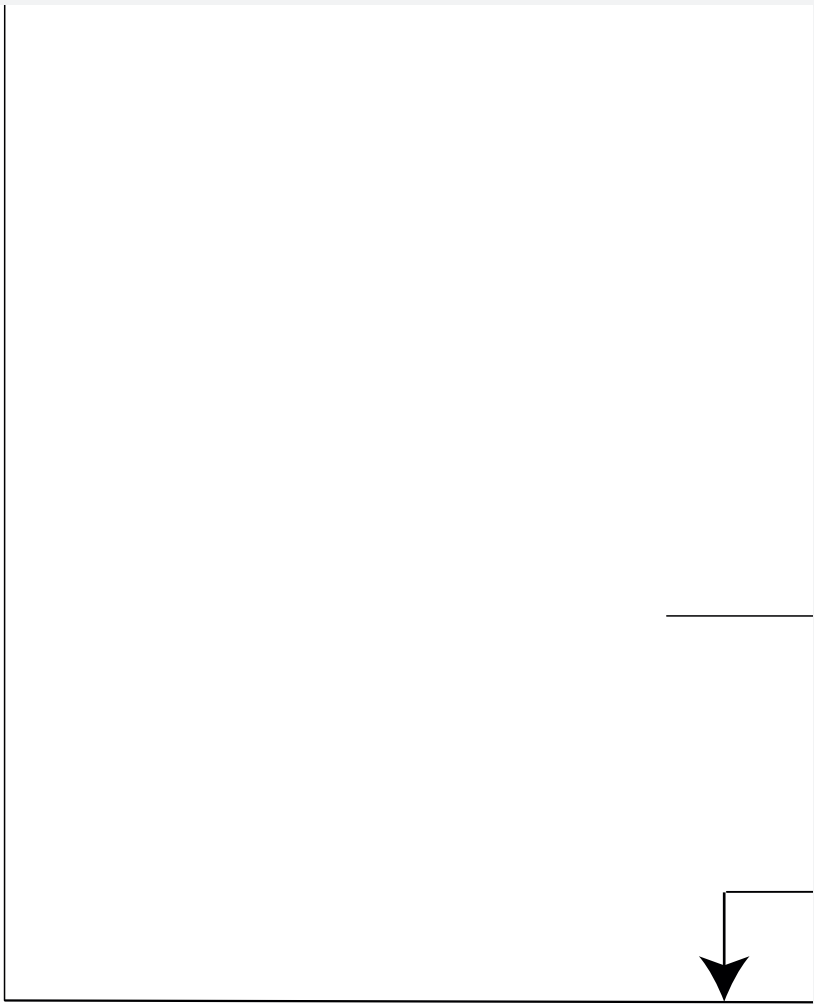
Shorten/len





THE REDDY
B





[Redacted content]

[Redacted content]

[Redacted content]

[Redacted content]

JIN 1 VI

dice

fold

Grainline

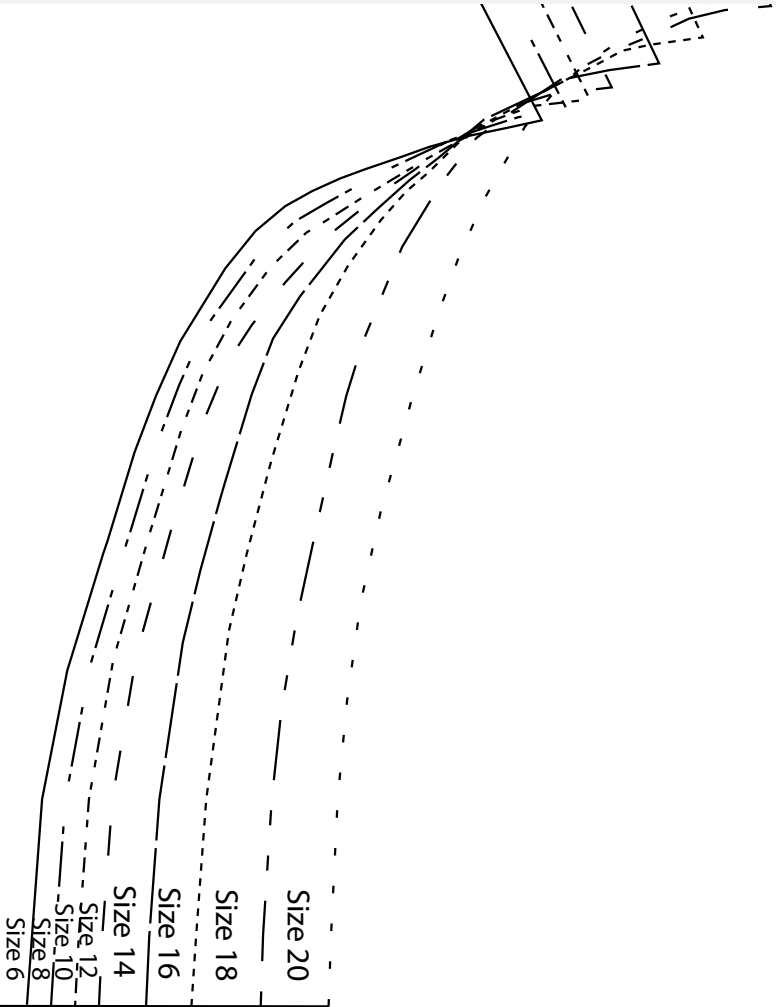
gthen line

Centre back

Foldline

MITAD





Pattern size chart

