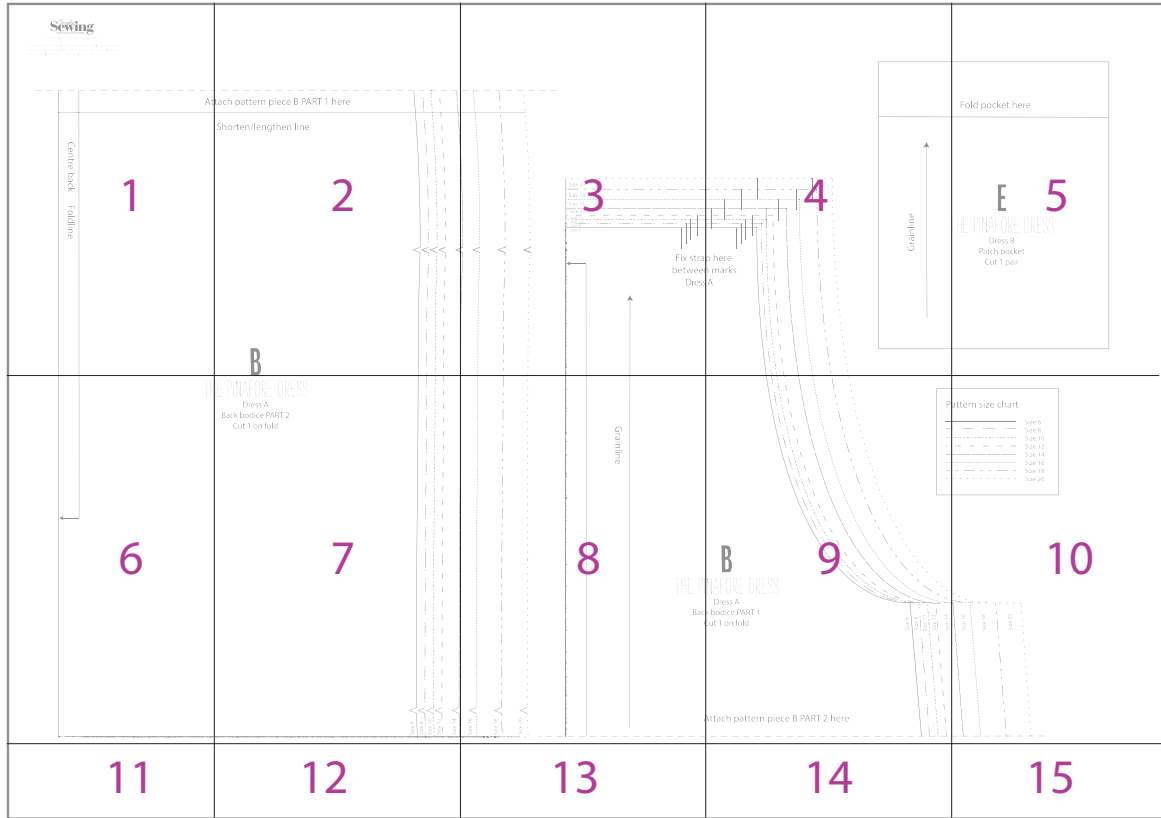


# THE PINAFORE DRESS

## HOW TO PRINT THIS PATTERN

Print out this 30-page PDF on to A4 paper. Trim away the shaded border from each page and position the pages as below to assemble the pattern...



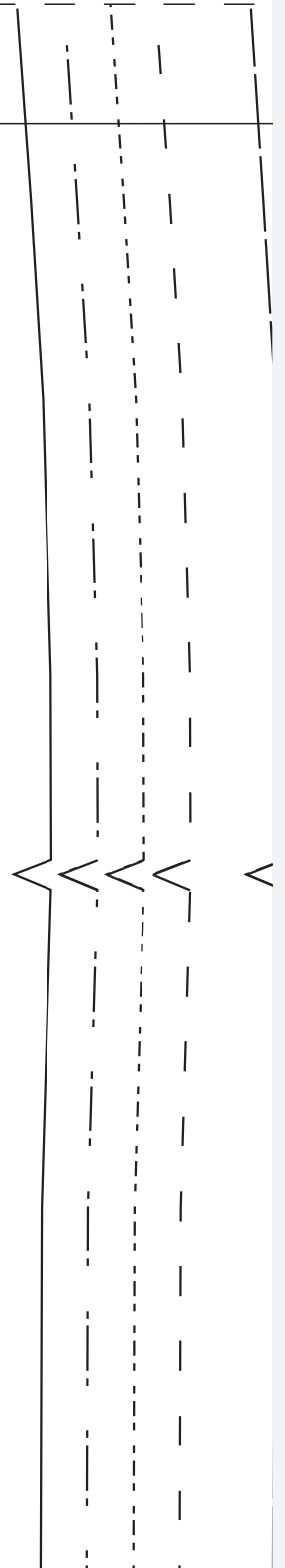
A

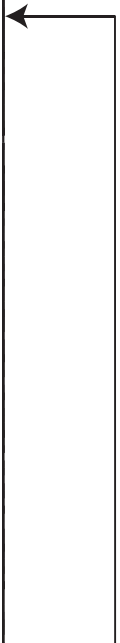
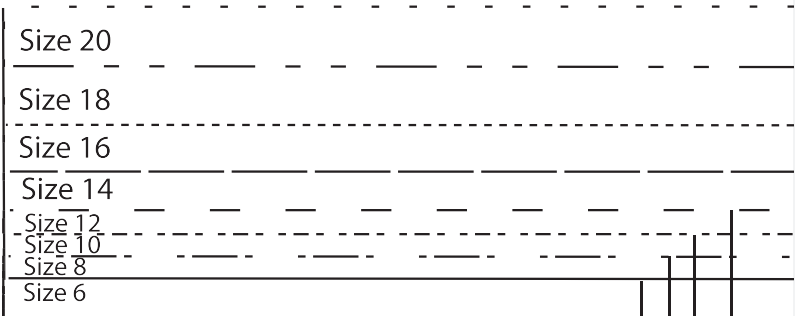
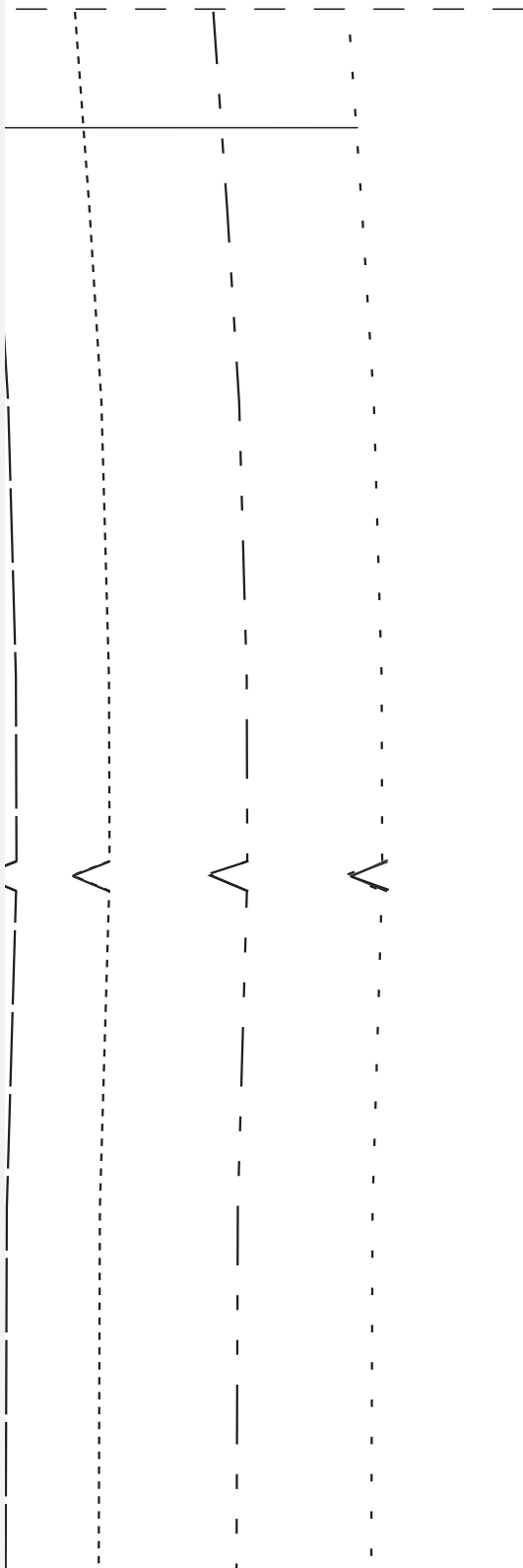
Centre back  
Foldline

Attach pattern piece B PART 1 here

Shorten/lengthen line

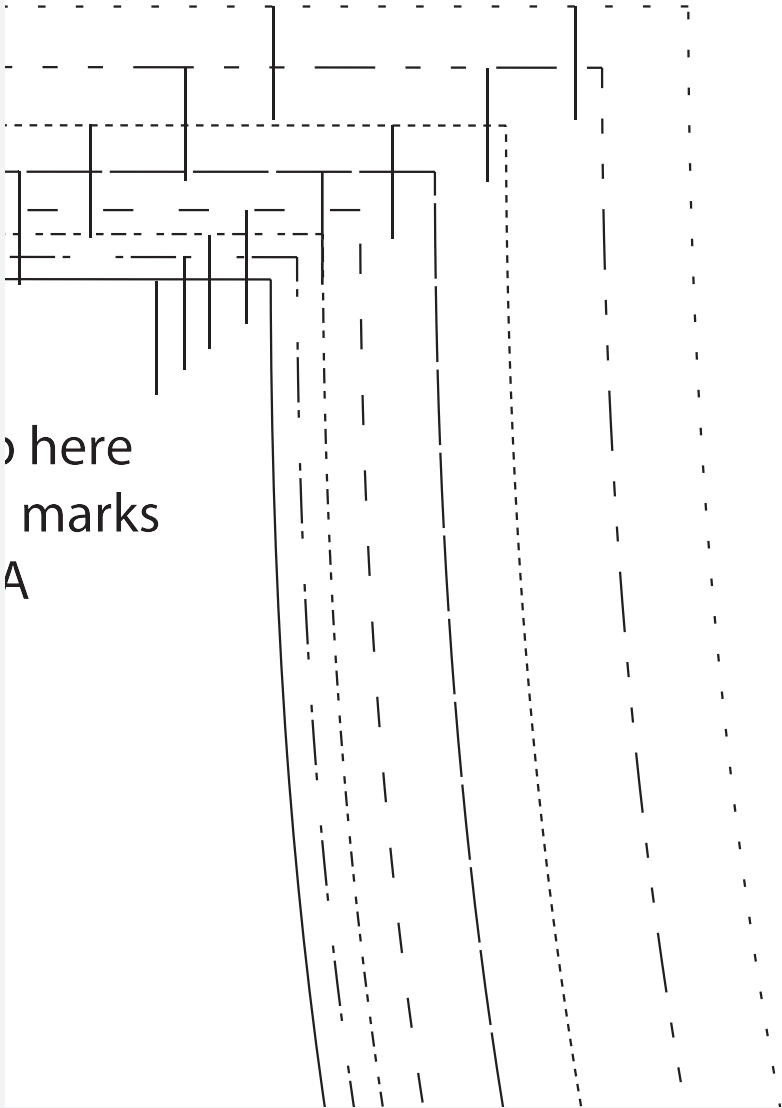
**B**





Fix strap  
between  
Dress /





here  
marks  
A



Fold pocket here

**E**

THE PINAFORE DRESS

Dress B

Patch pocket

Cut 1 pair

TH



# THE PINAFORE DRESS

Dress A

Back bodice PART 2

Cut 1 on fold

Size 6

Size 8

Size 10

Size 12

Size 14

Size 16



Size 18



Size 20



Grainline

THE PIM

Back  
C

A

Pat



# B

## VAFORE DRESS

Dress A

bodice PART 1

cut 1 on fold

Size 6

Size 8

Size 10

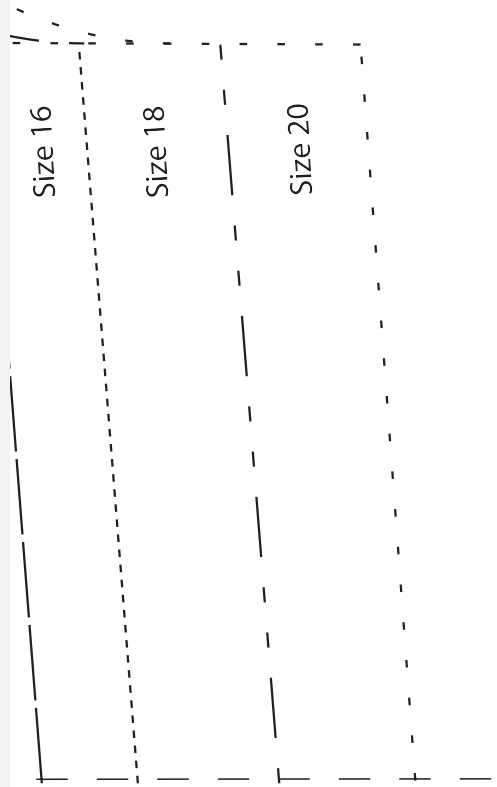
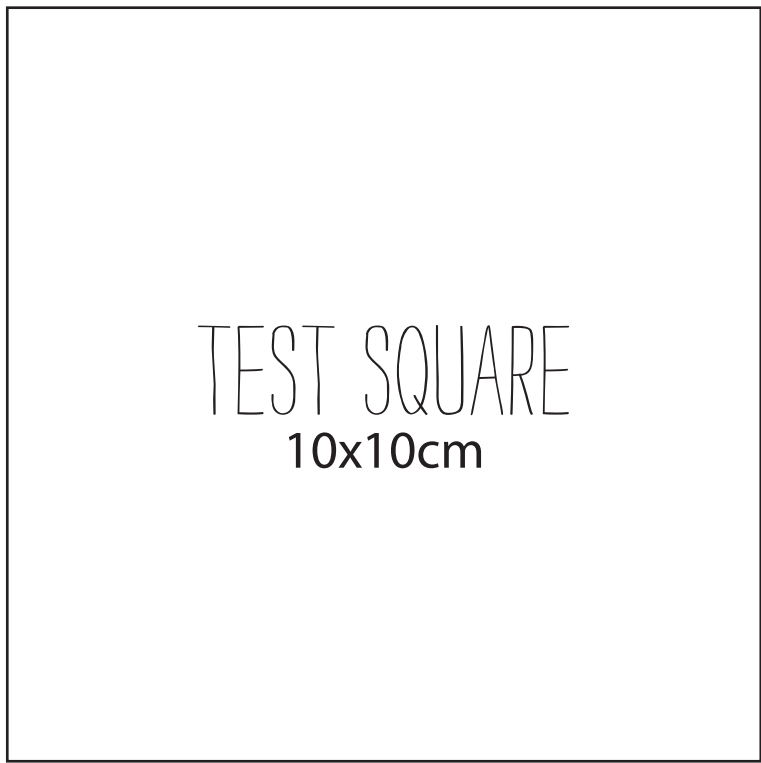
Size 12

Size 14

Attach pattern piece B PART 2 here

# Pattern size chart

—————	Size 6
- - - - -	Size 8
.....	Size 10
- - - - -	Size 12
—————	Size 14
.....	Size 16
- - - - -	Size 18
.....	Size 20







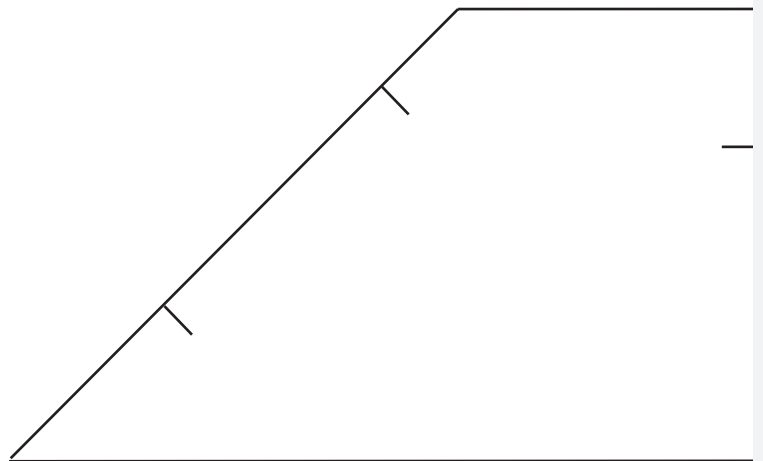
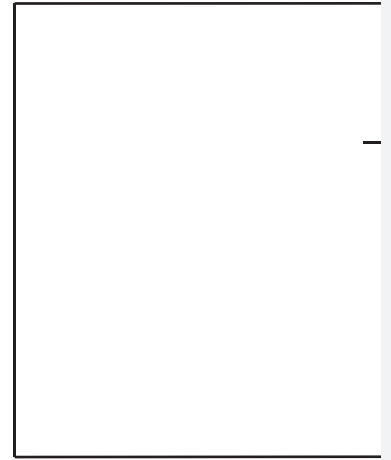








© Printed in the UK for Simply Sewing magazine. Supplied by Immediate Media Company Ltd, Bristol, BS1 4ST. To be used for individual, private home use only and not for commercial or manufacturing purposes.



---

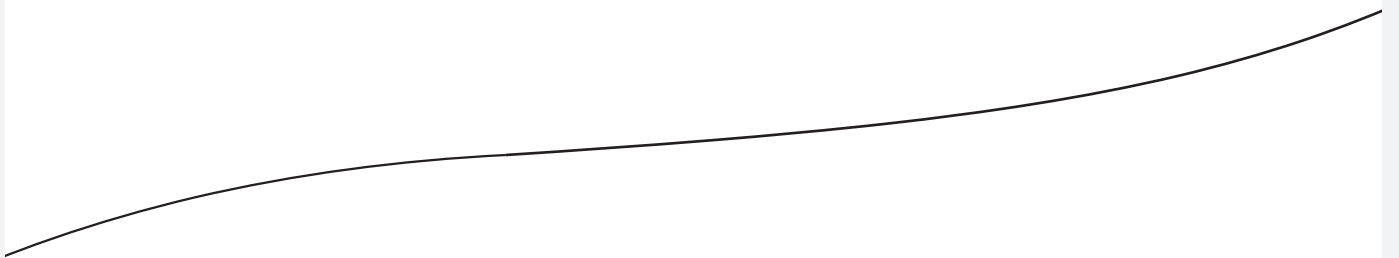
---

Grainline

---

---

Grainline



# MAFORE DRESS

Dress A  
Strap  
Cut 2 pairs

## F



# THE PINAFORE DRESS

Dress B  
Strap  
Cut 2 pairs

## G

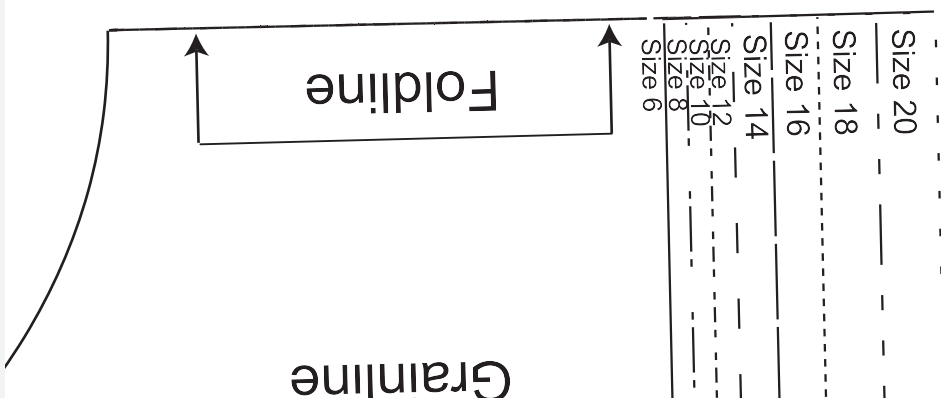
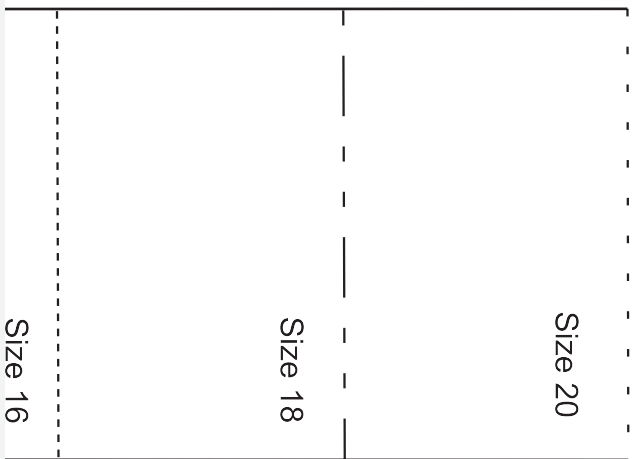
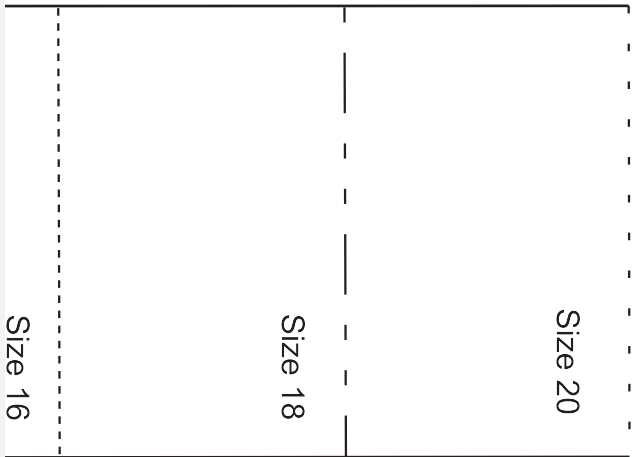
Size 20	-----
Size 18	-----
Size 16	-----
Size 14	-----
Size 12	-----
Size 10	-----
Size 8	-----
Size 6	-----

Foldline

Grainline

		<p>Size 14</p> <p>Size 12</p> <p>Size 10</p> <p>Size 8</p>
<p>Size 14</p> <p>Size 12</p> <p>Size 10</p> <p>Size 8</p>		<p>Size 14</p> <p>Size 12</p> <p>Size 10</p> <p>Size 8</p>
<p>Size 6</p> <p>THE PIN</p>		<p>Size 6</p>





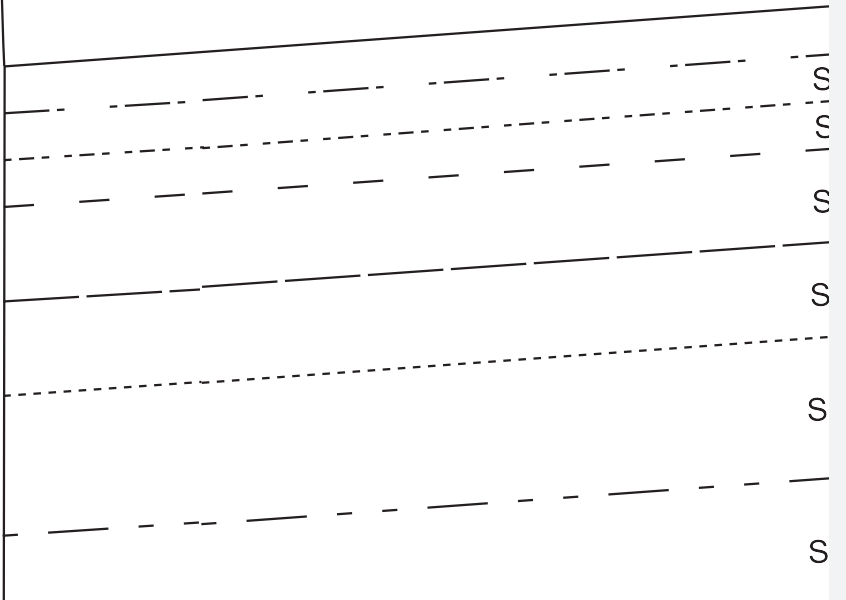
J

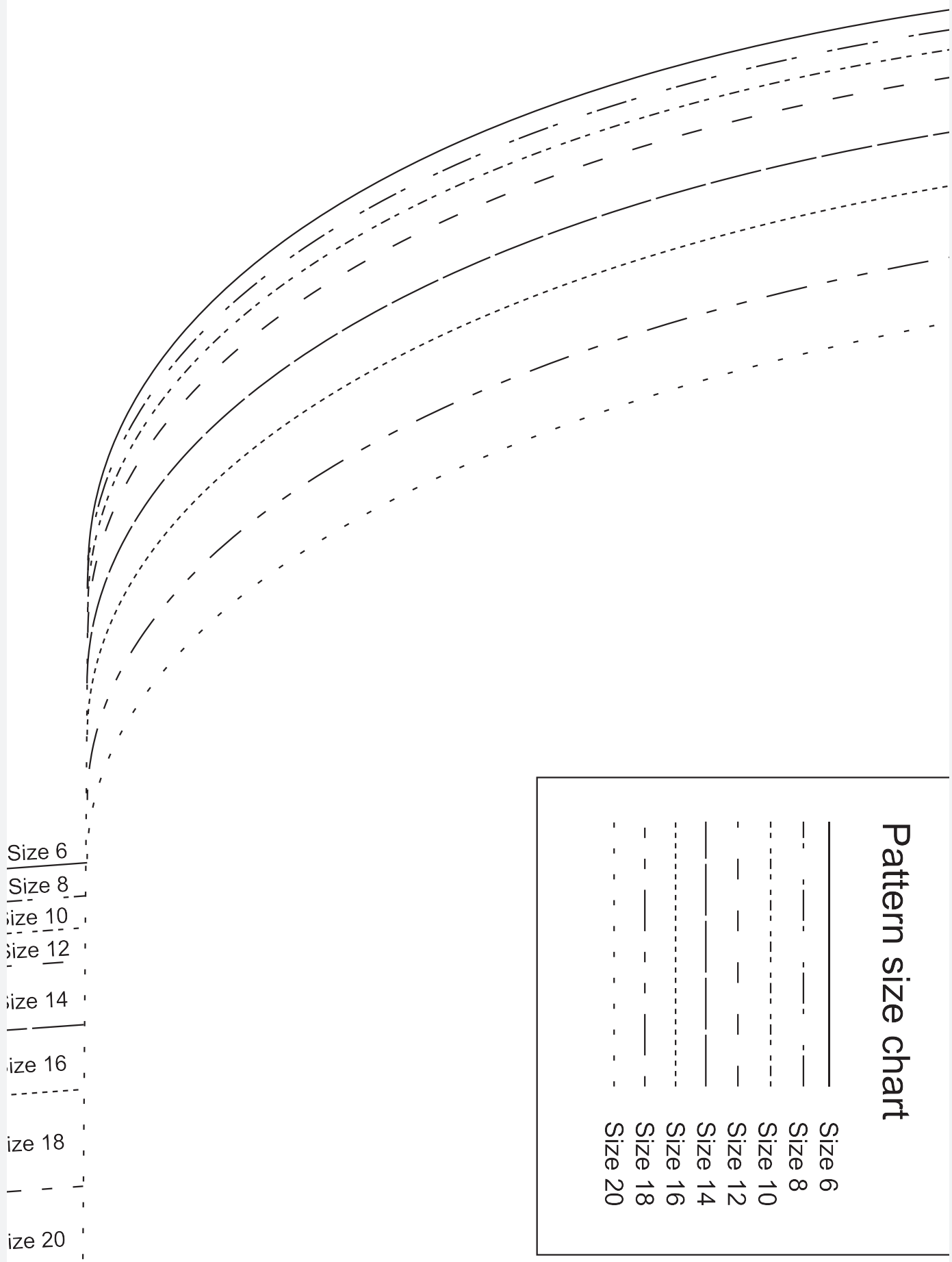
# THE PINAFORE DRESS

Dress B

Back facing

Cut 1 on fold

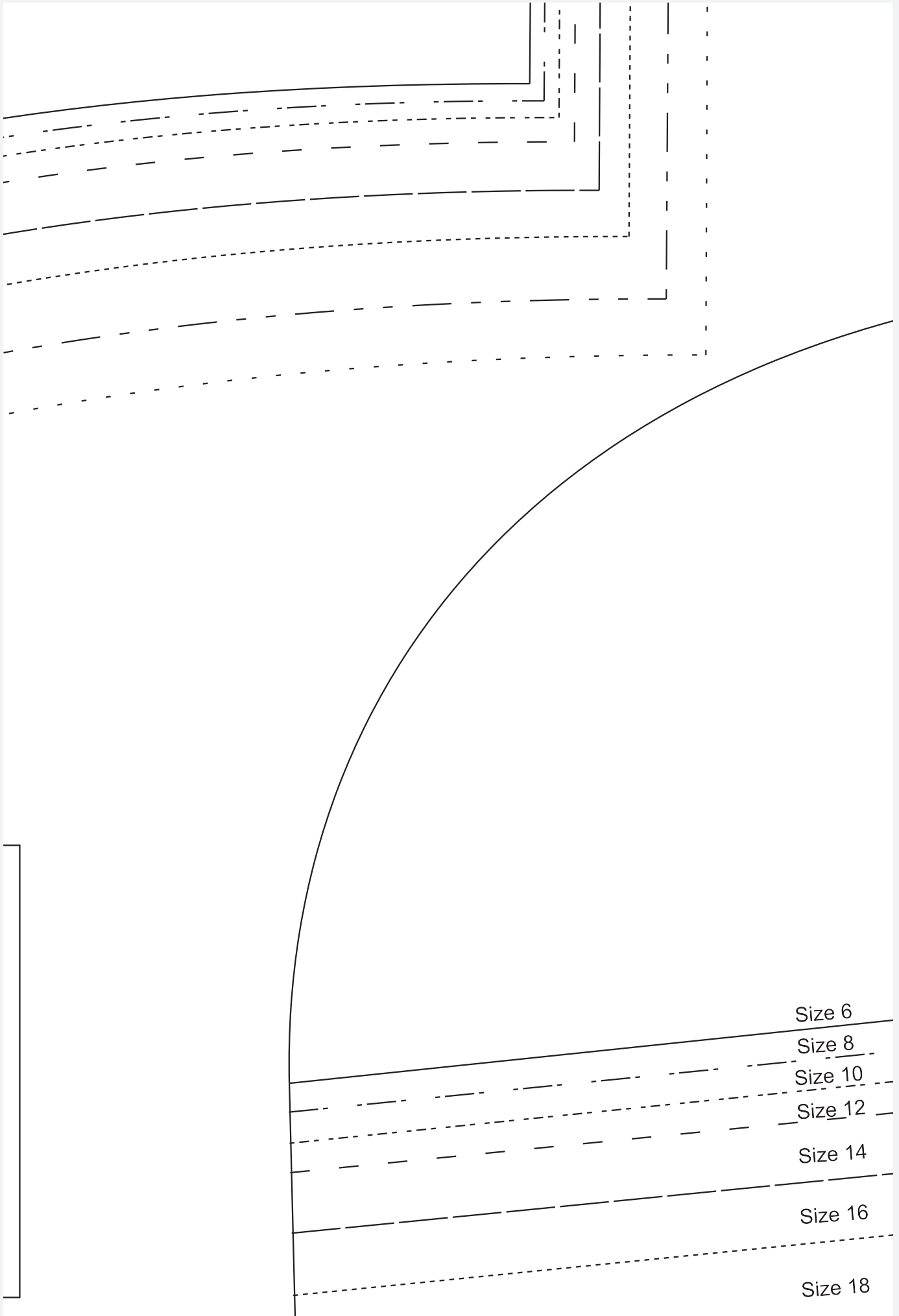




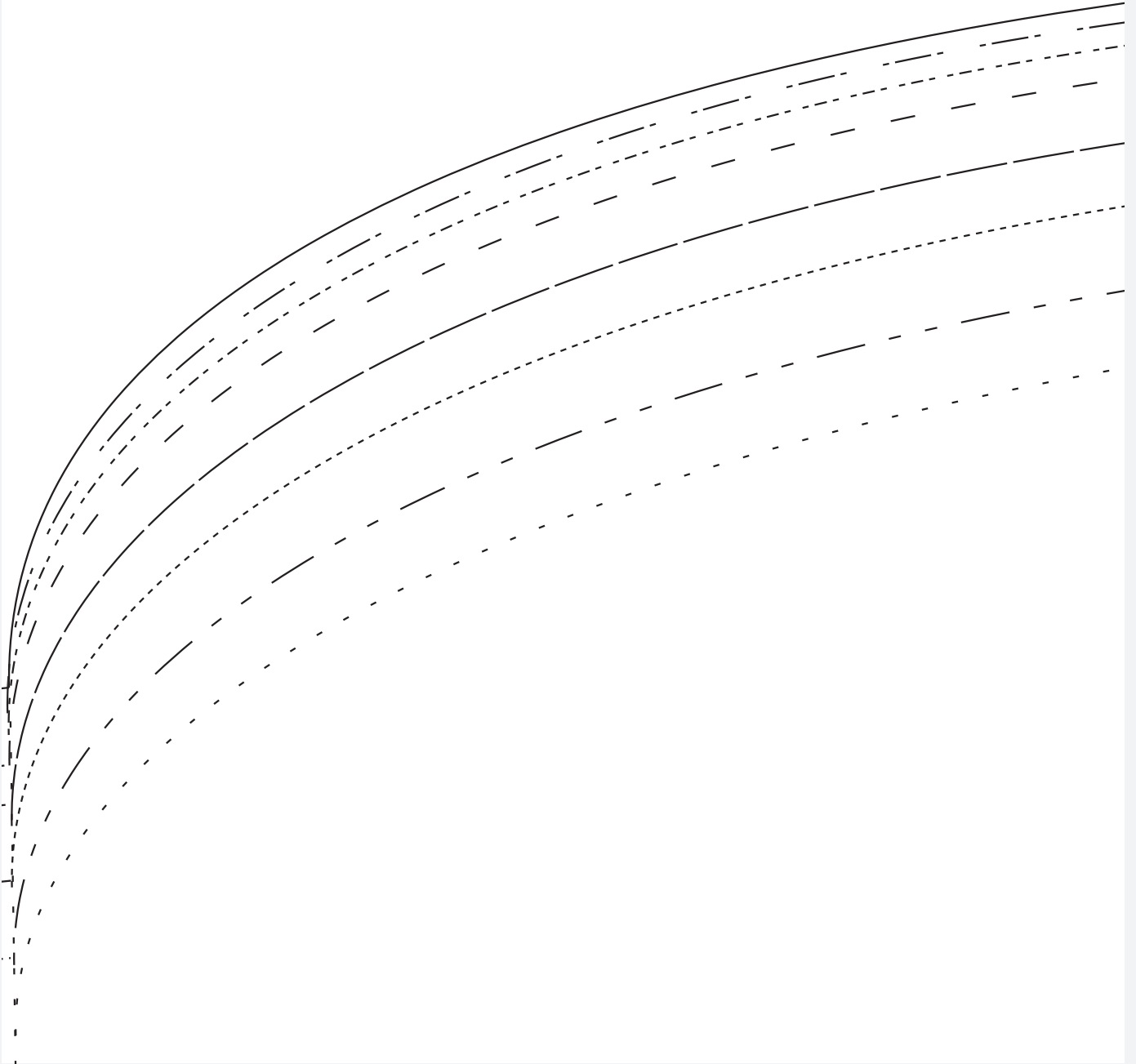
Size 6  
 Size 8  
 size 10  
 size 12  
 size 14  
 size 16  
 size 18  
 size 20

### Pattern size chart

—	Size 6
- - -	Size 8
· · ·	Size 10
—	Size 12
- - -	Size 14
· · ·	Size 16
—	Size 18
- - -	Size 20

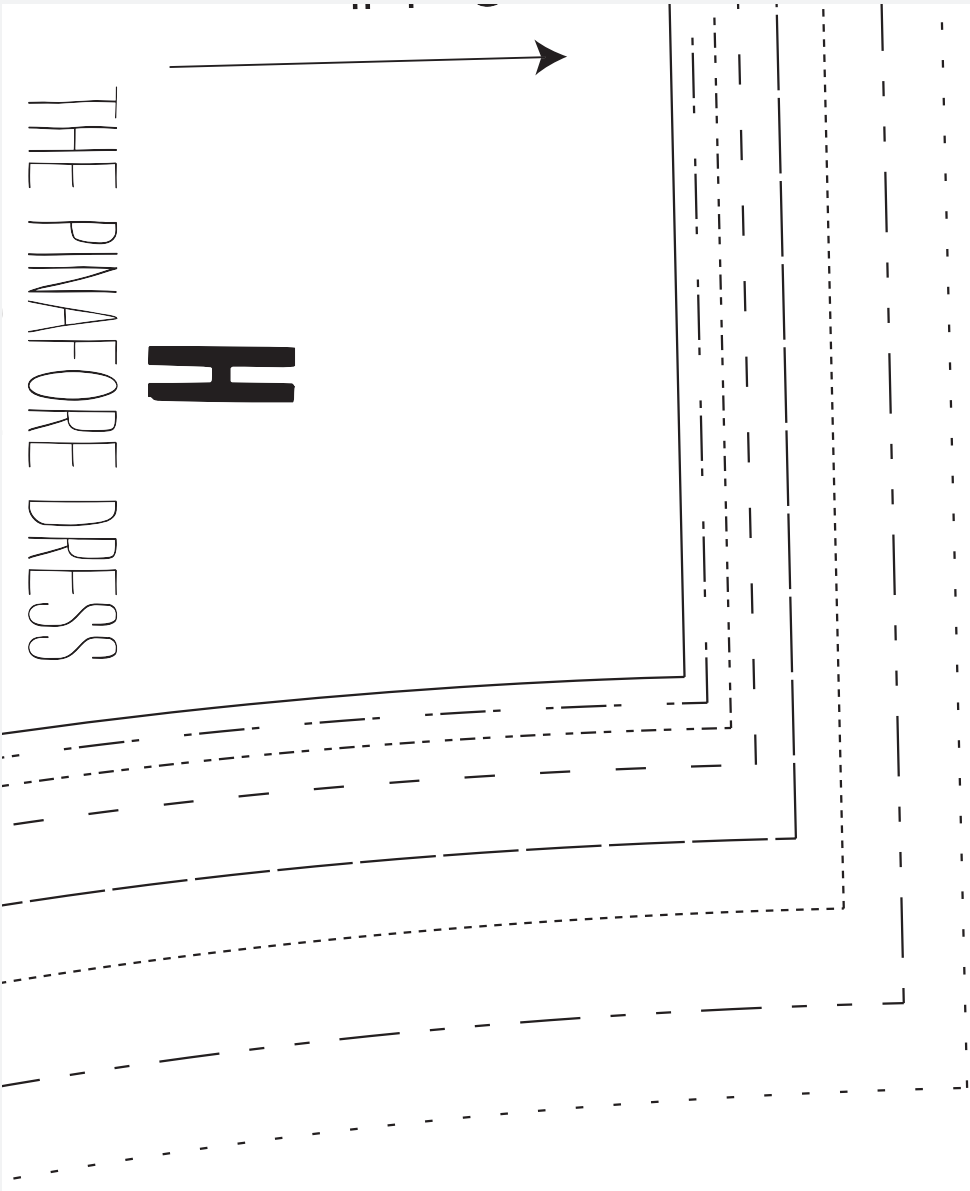


Dress A  
Back facing  
Cut 1 on fold



THE PINAFORE DRESS

**H**



\_\_\_\_\_







Size 20

1  
1  
1  
1  
1

