

# THE PINAFORE DRESS

**SIZES**  
**6-20**

US 4 -18  
EUR 34-48



# THE PINAFORE DRESS

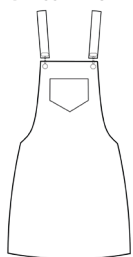
**SIZES  
6-20**

US 4-18  
EUR 34-48

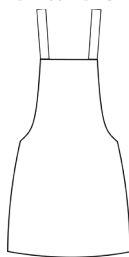
Make a classic pinafore dress to layer with your favourite tees, with two strap and pocket options.

## DRESS A + DRESS B

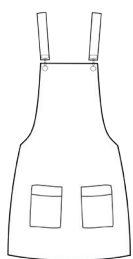
DRESS A FRONT



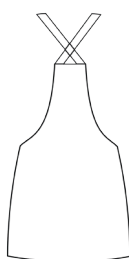
DRESS A BACK



DRESS B FRONT



DRESS B BACK



## PACK INCLUDES

- Pattern sheets x 4
- Instruction sheet

## YOU WILL NEED

For all sizes:

- Main fabric: 2.7mx115cm (3ydx45in), 2.7mx140cm (3ydx55in)
- Contrasting topstitch thread (optional)
- 2 x buckle sets
- Matching thread
- Basic sewing kit

## NOTES

- Use a 1.5cm (5/8in) seam allowance unless otherwise stated.

## FABRIC SUGGESTIONS

- Light to mediumweight wool, cord, medium to heavyweight cotton.

## SIZE CHART

SIZE	UK	6	8	10	12	14	16	18	20
	US	4	6	8	10	12	14	16	18
	EUR	34	36	38	40	42	44	46	48
TO FIT BUST	cm	81	84	86	89	94	99	107	114
	in	32	33	34	35	37	39	42	45
TO FIT WAIST	cm	63	66	68	71	76	81	89	96
	in	25	26	27	28	30	32	35	38
TO FIT HIPS	cm	89	91	94	96	101	107	114	122
	in	35	36	37	38	40	42	45	48

*Simply*  
**Sewing**  
FRESH IDEAS WITH FABRIC

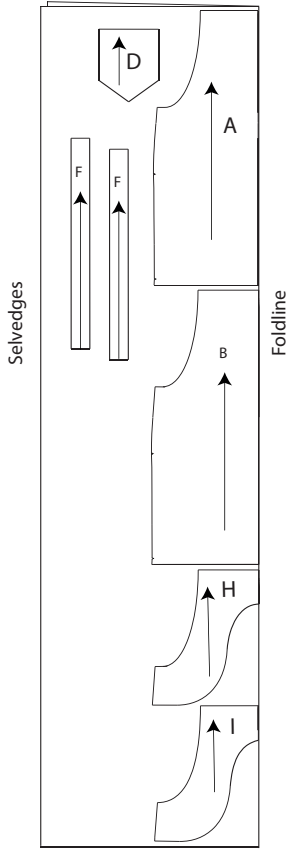
WWW.SIMPLYSEWINGMAG.COM

Printed in the UK for Simply Sewing magazine. Supplied by Immediate Media Company Ltd, Bristol, BS1 3BN.  
To be used for individual, private home use only and not for commercial or manufacturing purposes.

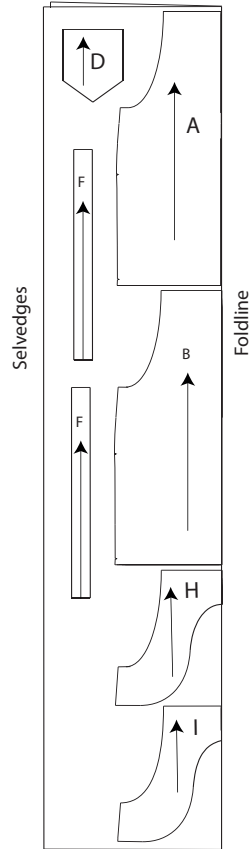
# THE PINAFORE DRESS

## CUTTING LAYOUTS

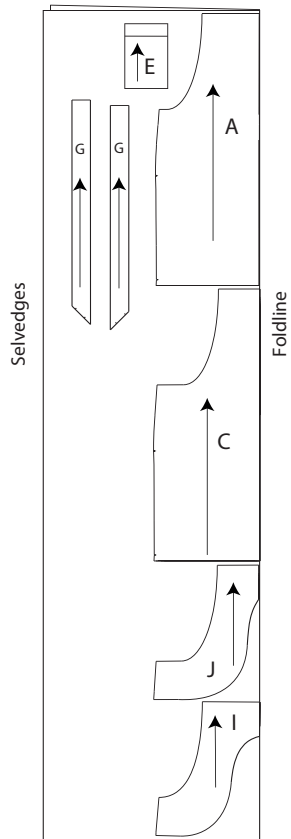
DRESS A – 140CM (55IN) WIDE  
Note: only cut one for pattern piece D



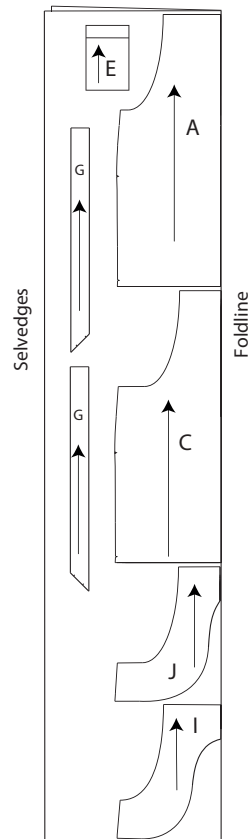
DRESS A – 115CM (45IN) WIDE  
Note: only cut one for pattern piece D



DRESS B – 140CM (55IN) WIDE



DRESS B – 115CM (45IN) WIDE

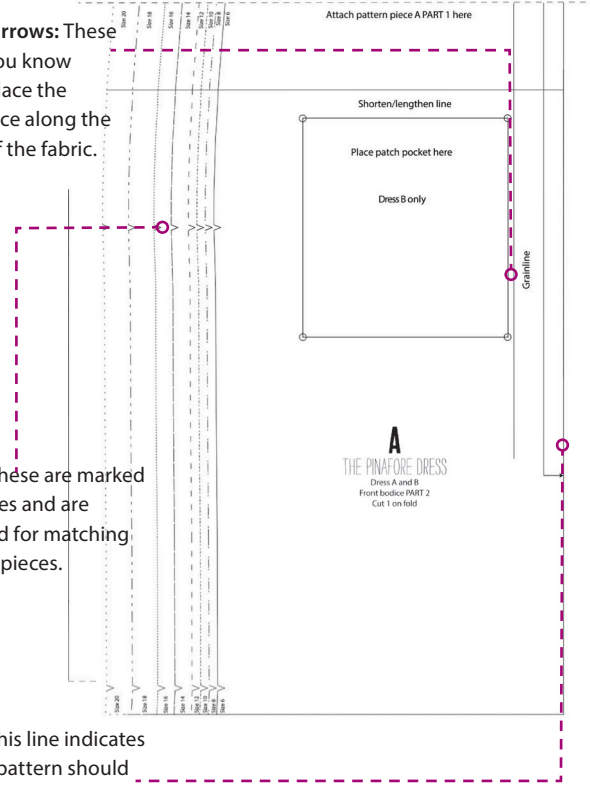


## PATTERN MARKINGS

**Grainline arrows:** These are to let you know where to place the pattern piece along the grainline of the fabric.

**Notches:** These are marked on the edges and are mostly used for matching up pattern pieces.

**Foldline:** This line indicates where the pattern should be positioned on the fold of the fabric.





# THE PINAFORE DRESS



## STITCHING TERMS

**Right side (RS)/Wrong side (WS):** The right side/wrong side of the fabric. The right side usually has the print, design or texture and the wrong side is usually plain or duller in appearance.

**Machine tack:** Use a long stitch length to hold a section in place. Don't backstitch at the start and end.

**Finish the seams:** Finish the raw edges with a zigzag stitch or an overlocker.

**Press:** Pressing fabric is placing the iron down and holding it for a few seconds, lifting it and placing it down again. Ironing is the movement of sliding the iron back and forth to remove creases.

**Understitch:** Stitching worked close to the seam line, usually on the side that will be on the inside of the garment such as the facing. This will hold the seam allowance in place when the garment is worn.

**Staystitch:** Stitching in areas prone to stretching, such as necklines and other curved edges, to hold the fabric in shape while it is being worked on.

**Topstitch:** Stitching usually done from the right side of the garment, used to hold seam allowances in place or for decorative purposes.

**Stitch in the ditch:** Stitching worked directly in the 'ditch' of a seam.

**Toile:** A test garment, often made from calico or muslin, to check the fit or test a pattern before the real fabric is used. Known as a muslin in the US.

## CUTTING OUT

We recommend making a toile to check fit and make any necessary amendments before cutting into your final fabric. Use calico or another inexpensive fabric for the toile.

### DRESS A

**Step one** From the main fabric cut:

**Front bodice (A):** cut 1 on fold.

**Back bodice (B):** cut 1 on fold.

**Bib pocket (D):** cut 1.

**Strap (F):** cut 2 pairs.

**Back facing (H):** cut 1 on fold.

**Front facing (I):** cut 1 on fold.

### DRESS B

**Step one** From the main fabric cut:

**Front bodice (A):** cut 1 on fold.

**Back bodice (C):** cut 1 on fold.

**Patch pocket (E):** cut 1 pair.

**Strap (G):** cut 2 pairs.

**Front facing (I):** cut 1 on fold.

**Back facing (J):** cut 1 on fold.

## MAKING THE DRESS

### PREPARING THE BODICE

**Step one** Staystitch the curved side edges of both the front and back bodice pieces within the seam allowance. **01**

### ADDING THE BIB POCKET – DRESS A ONLY

**Step one** Finish all the seams of the bib pocket. Press over the finished seams by 1cm ( $\frac{3}{8}$ in). **02**

**Step two** Topstitch along the top edge of the bib pocket, 7-8mm from the pressed edge. **03**

**Step three** Pin the bib pocket to the front bodice piece, using the marks on the pattern for the placement. Topstitch the bib pocket to the front bodice 5mm ( $\frac{1}{4}$ in) from the pressed edge. Start stitching at one top corner and continue



# THE PINAFORE DRESS



around until the top corner on the other side, pivoting around the base. Press in place. <sup>04</sup>

## ADDING THE PATCH POCKETS – DRESS B ONLY

**Step one** Press over 1cm ( $\frac{3}{8}$ in) to the WS along the top edge of each patch pocket. Then press over a further 3cm ( $1\frac{1}{4}$ in), as marked on the pattern. Topstitch along the top of the patch pocket approx 2.5-2.8mm from the pressed edge. This will neatly enclose the top raw edge and provide a mock-facing to the top of the pocket.

**Step two** Finish the remaining three sides of each patch pocket and press over these edges to the WS by 1cm ( $\frac{3}{8}$ in). It is important that these sides are neatly pressed so that they are straight when it comes to sewing them to the dress. Use tailor's chalk and a ruler to mark the fold line if you are having difficulty achieving a straight fold.

**Step three** Stitch the patch pockets in place on the front bodice, as indicated by the marks on the pattern. Neatly topstitch the patch pockets to the front bodice 5mm ( $\frac{1}{4}$ in) away from the pressed edge. Start stitching at one top corner and continue around until the top corner on the other side, pivoting around the base. Press in place.

## STITCHING THE STRAPS

**Step one** With the RS of the fabric together, stitch the side seams and one short square end of the straps with a 1cm ( $\frac{3}{8}$ in) seam allowance. Trim the seam allowance of the straps down by 0.5cm ( $\frac{1}{4}$ in), cut off the corners and turn the straps RS out and press. <sup>05</sup>

**Step two** Topstitch the straps, 5mm ( $\frac{1}{4}$ in) from the stitched edges. <sup>06</sup>

**Step three** Machine tack the raw edges of the straps to the back bodice, as marked on the pattern within the seam allowance. Check you are happy with the length of the straps. For Dress B, double check you have stitched the straps in the correct orientation so that they will overlap. <sup>07</sup>



# THE PINAFORE DRESS



## STITCHING THE BODICE

- Step one** Finish the side seams of the front and back bodice pieces separately.
- Step two** With the RS facing, stitch the side seams of the front and back bodice pieces. Press the seams open.
- Step three** Finish the side seams of the front and back facing pieces.
- Step four** Stitch the front and back facing pieces at the side seams with RS of the fabric together. Press the seams open.
- Step five** Finish the long outer curved edge of the facing piece. **08**
- Step six** With the RS together, pin and then stitch the facing to the bodice, matching the side seams. Make sure the straps are sandwiched in between on the back bodice. **09**
- Step seven** Trim the seam allowance down by half and clip into the curves. Trim off the corners.
- Step eight** Press the facing towards the seam allowance and understitch in place. This might be tricky around the corners but stitch as far as you can go. Fold the facing inside the bodice and press in place. **10**
- Step nine** Stitch in the ditch to hold the facing in place at the side seams. **11**

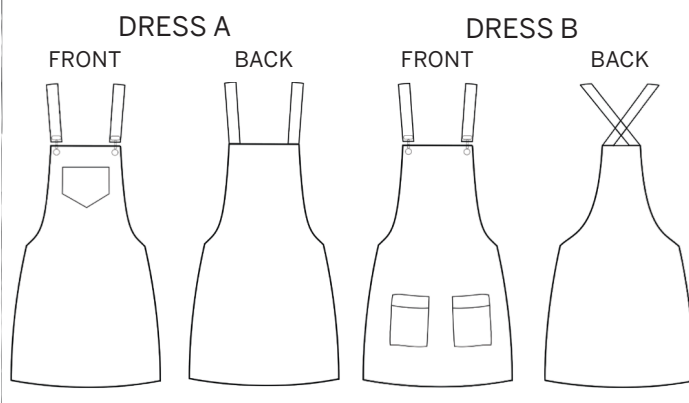
## HEMMING THE DRESS

- Step one** Check you are happy with the length of the bodice. Use tailor's chalk to mark your desired hem length if you would like it to be any shorter (remembering that there is a 3cm (1¼in) hem allowance included). Fold the hem over by 1cm (¾in) and then by 2cm (¾in) and pin in place.
- Step two** Stitch in place, starting and finishing at a side seam.

## ADDING THE BUCKLES

- Step one** Fix a buckle to either side of the front bodice and straps, as marked on the pattern and following the manufacturer's guidelines. Adjust the length of the straps using the buckle to fit. **12**
- Step two** Give the pinafore dress a final press to finish.

## DIAGRAMS



## FINISHED GARMENT MEASUREMENTS

SIZE	UK	6	8	10	12	14	16	18	20
	US	4	6	8	10	12	14	16	18
EUR	34	36	38	40	42	44	46	48	48
WAIST	cm	92.5	95	97.5	100	105.5	110.5	118	124.5
	in	36.5	37.5	38.5	39.5	41.5	43.5	46.5	49.5
HIPS	cm	97.5	100	103	105.5	110.5	115.5	123	131
	in	38.5	39.5	40.5	41.5	43.5	45.5	48.5	51.5