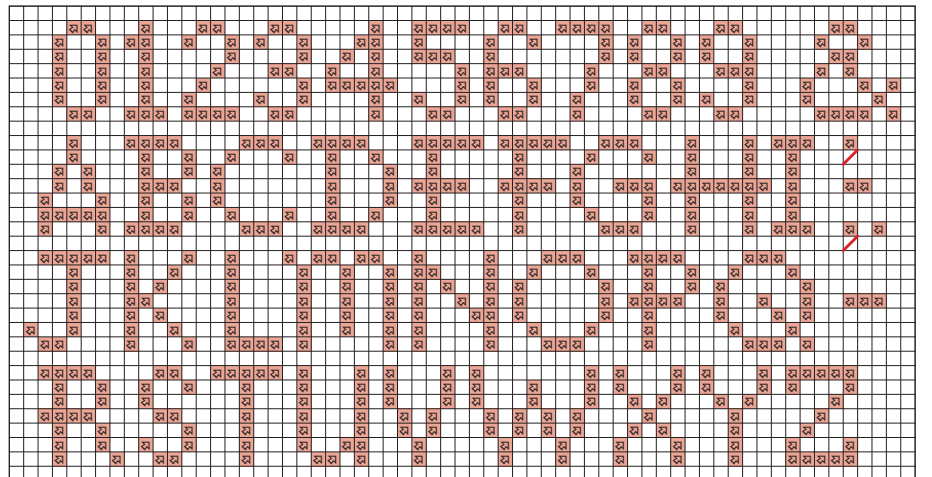
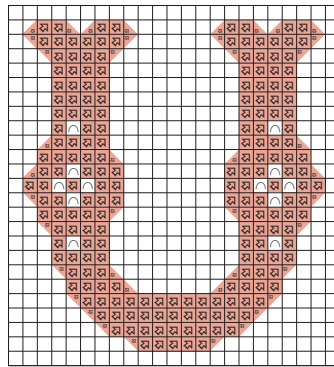
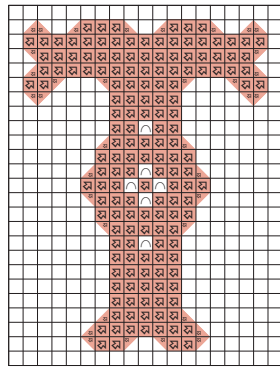
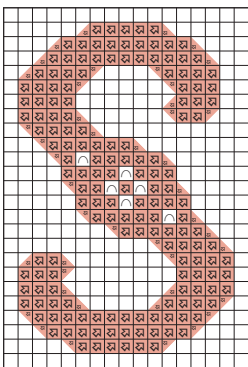
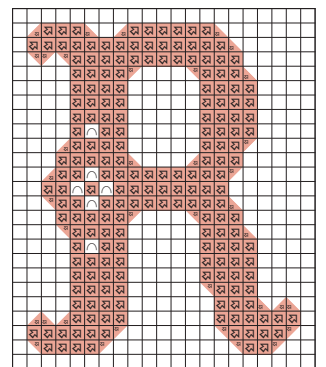
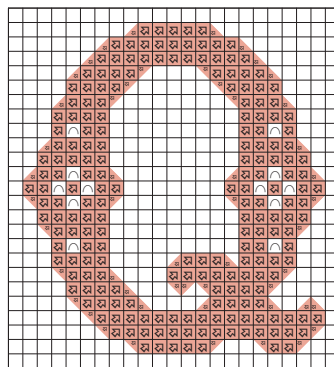
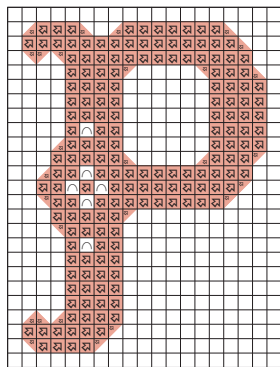
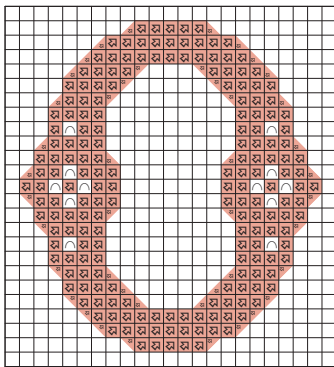
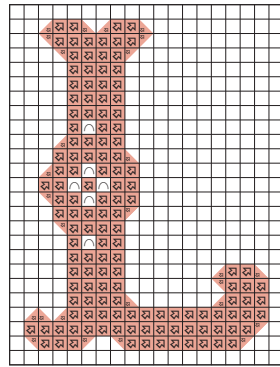
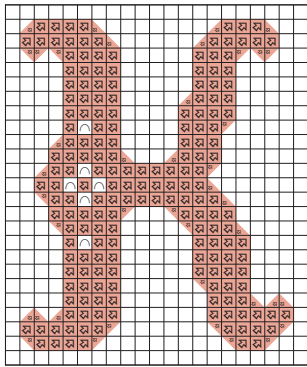
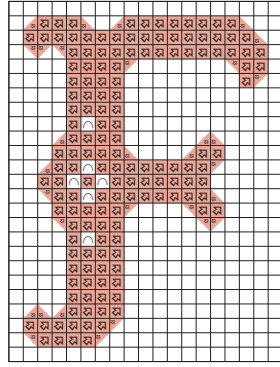
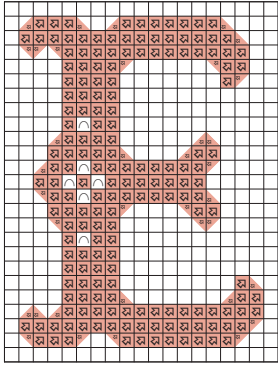


Designed by Jenny Van De Wiele





Winter Monogram ABC key

✕ Cross stitch in two strands

	DMC	Anchor	Madeira	
∩	blanc	2	2402	white
✕	321	9046	510	red
☆	743	302	113	yellow
▽	993	1070	1111	green
✕	3705	35	410	scarlet
§	3847	189	1204	teal

✕ Backstitch in one strand

—	321	9046	510	red
---	-----	------	-----	-----

✕ Backstitch in two strands

—	3847	189	1204	teal
---	------	-----	------	------

MAXIMUM STITCH COUNT 63 high x 61 wide

DESIGN AREA 14 HPI (28-count evenweave) – 9.5x11cm (3¾x4¼in)

STITCHED BY Charlotte Hodgman

These designs were stitched using DMC stranded cotton

