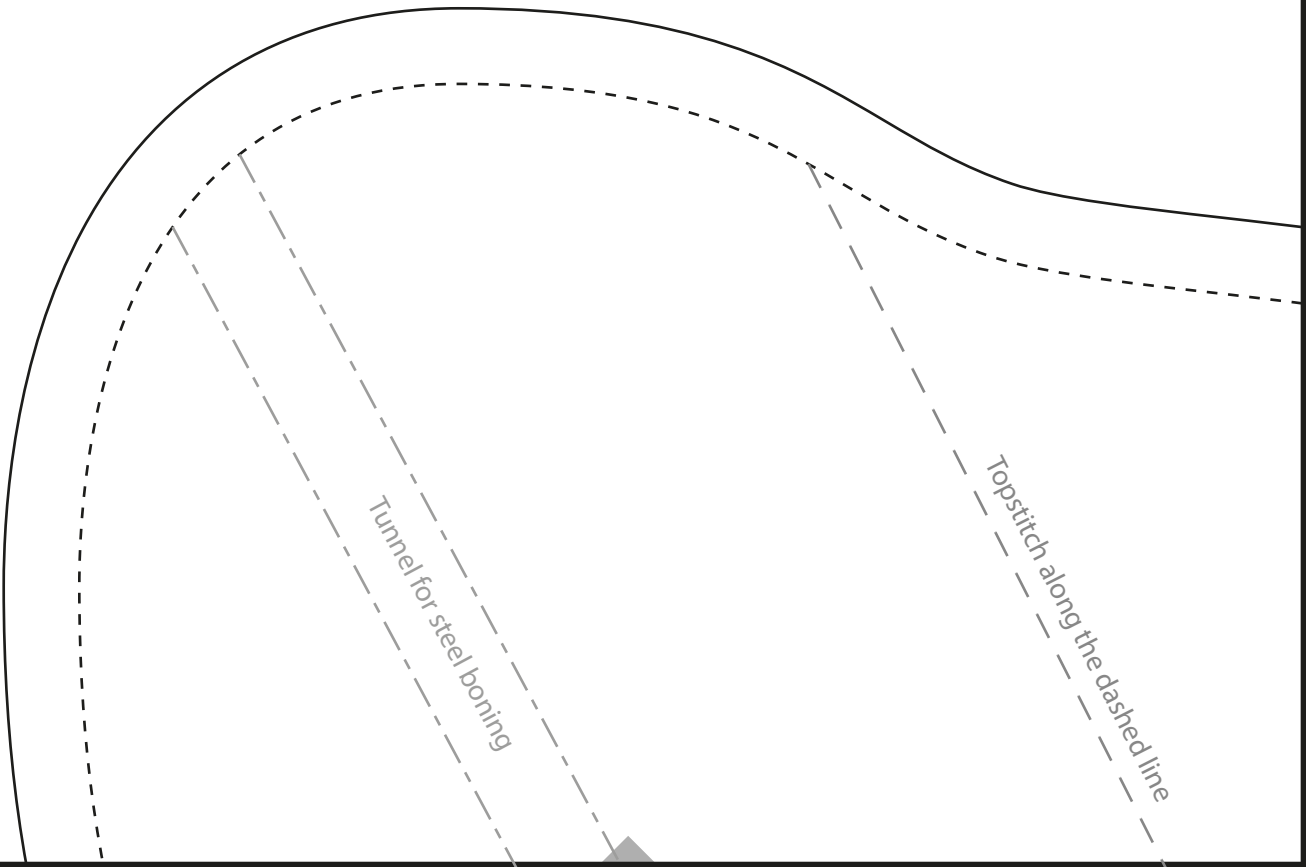
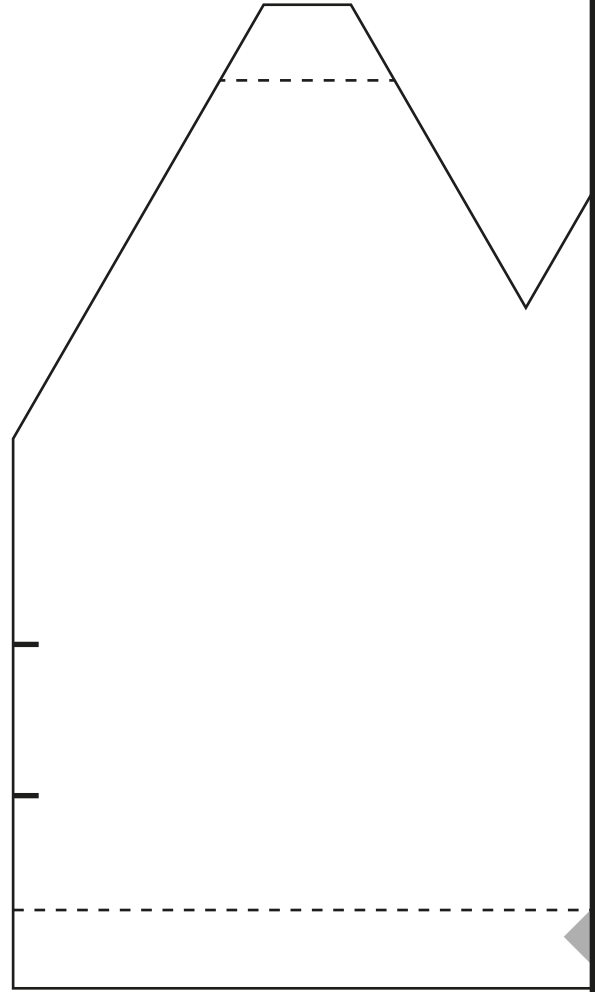


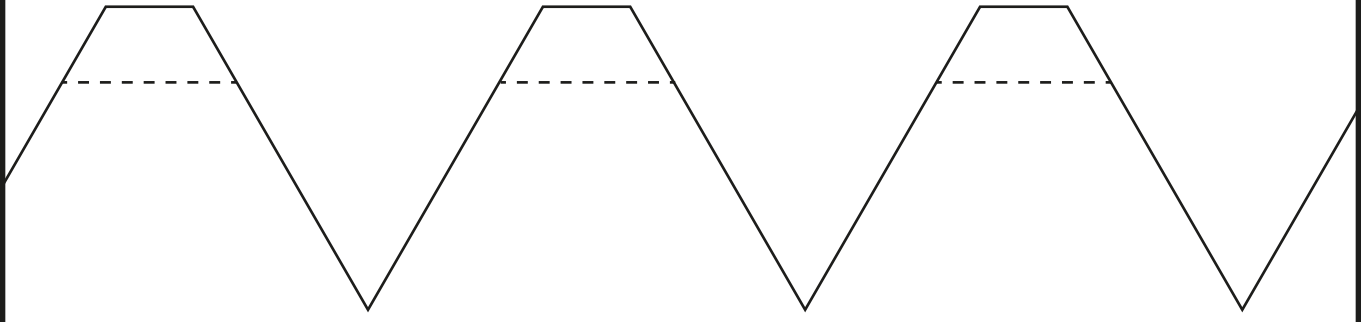


**POMPOM  
DU MONDE**

---

# fairy set

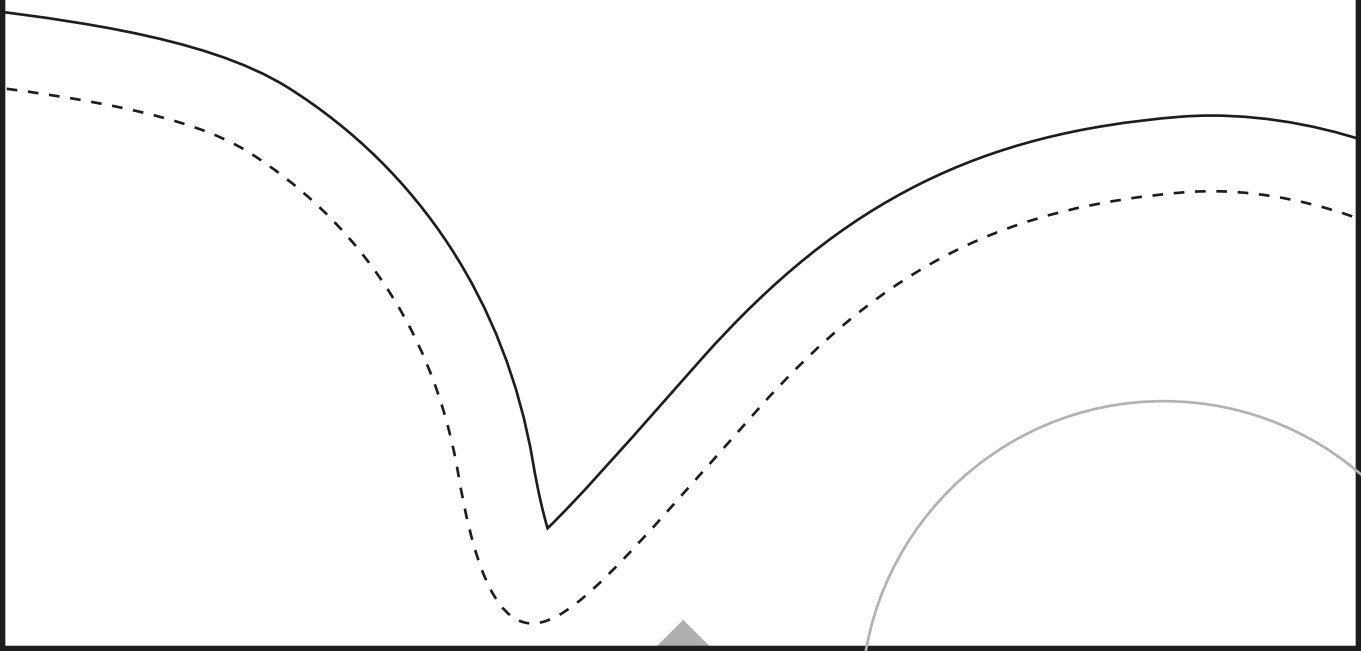




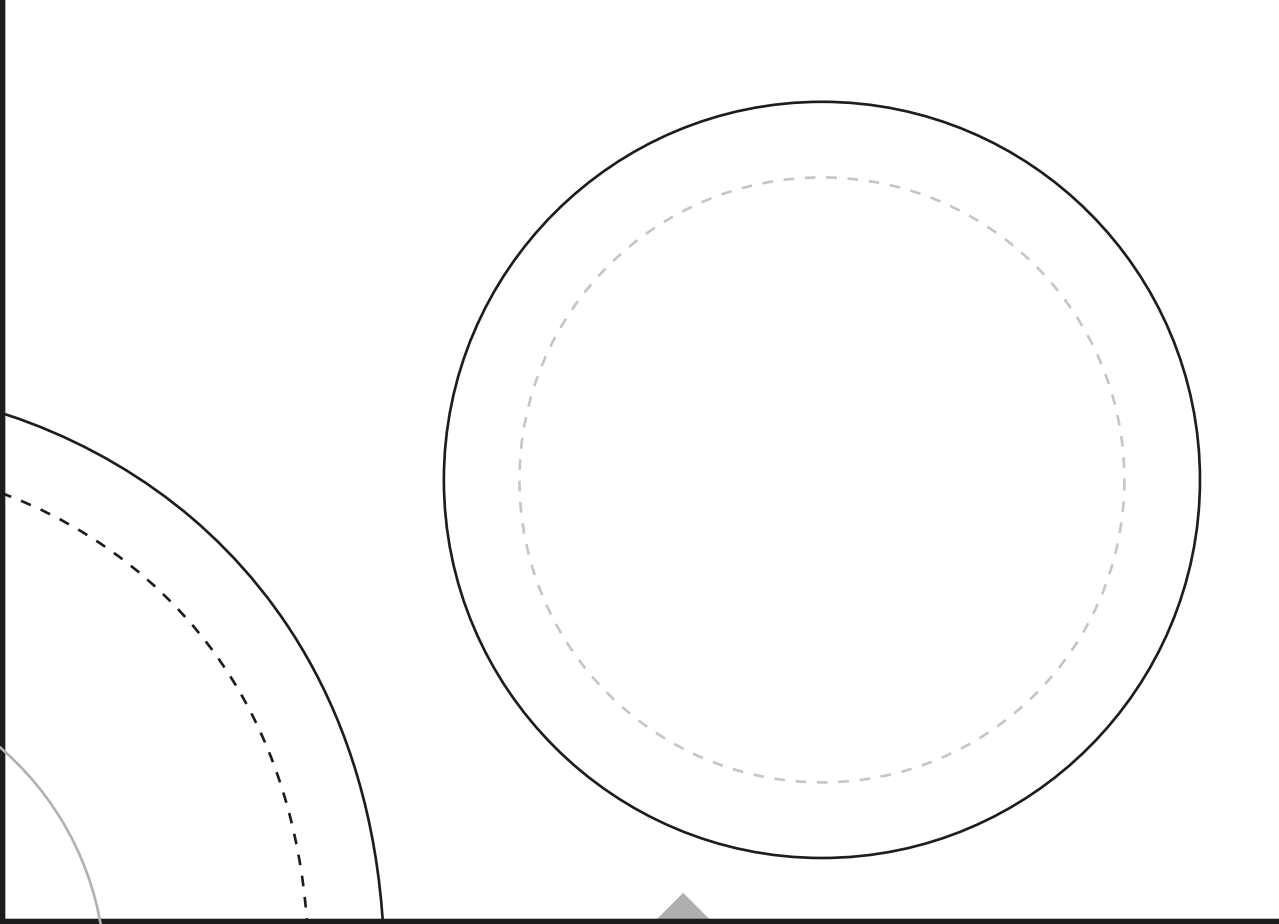
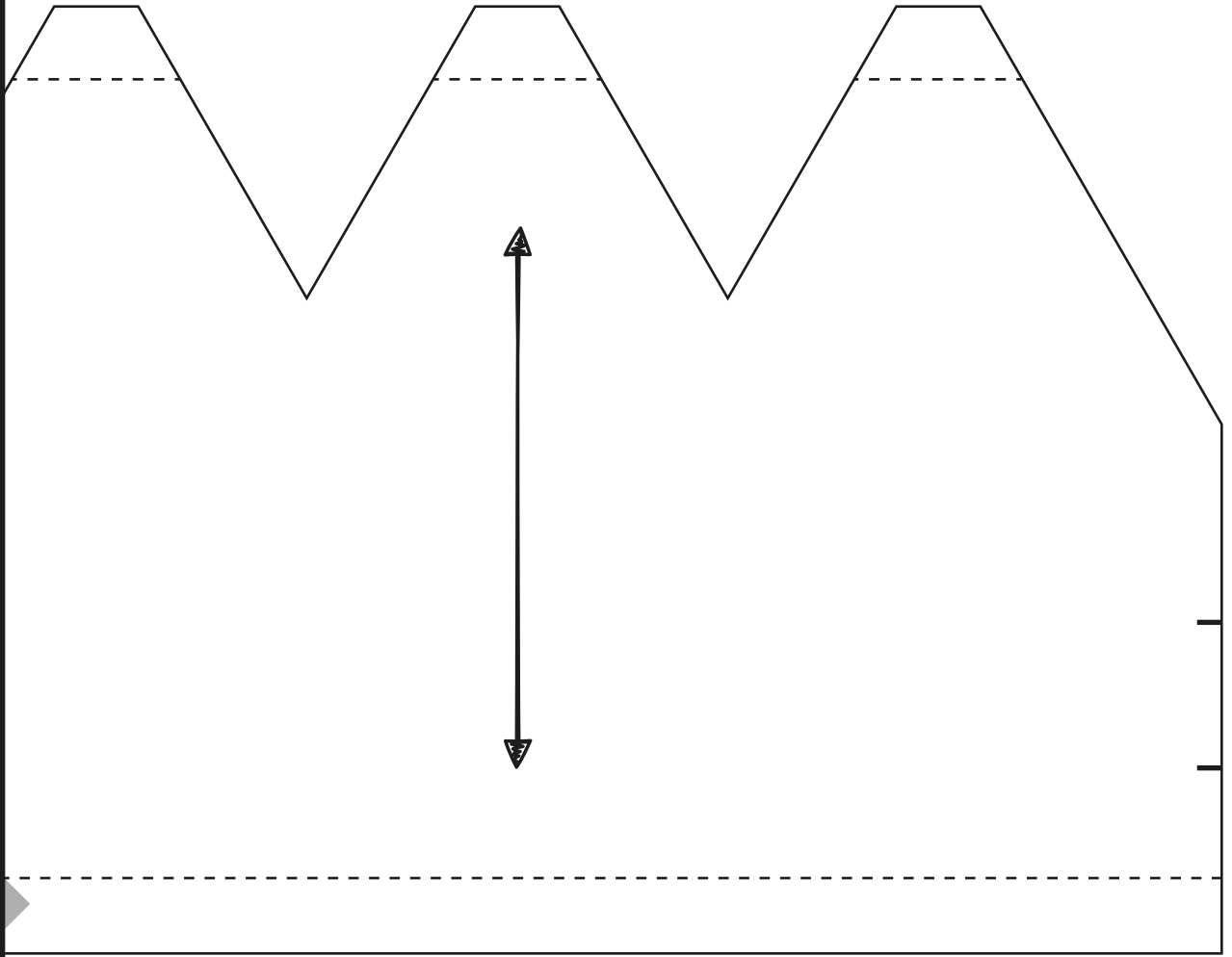
# CROWN

## main piece

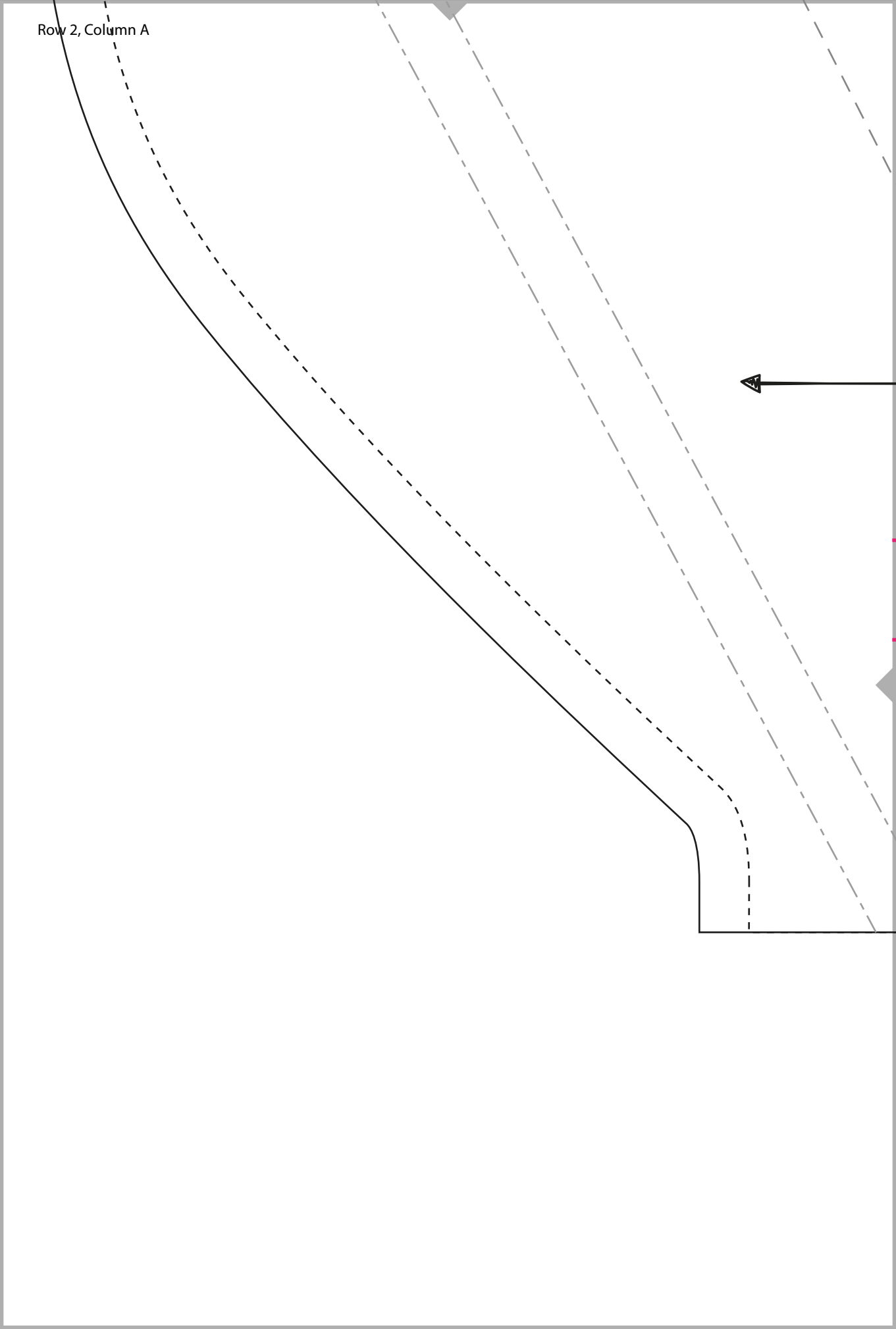
Cut 2 from main fabric along continuous line  
Cut 1 from wadding along dotted lines



Row 1, Column C



Row 2, Column A

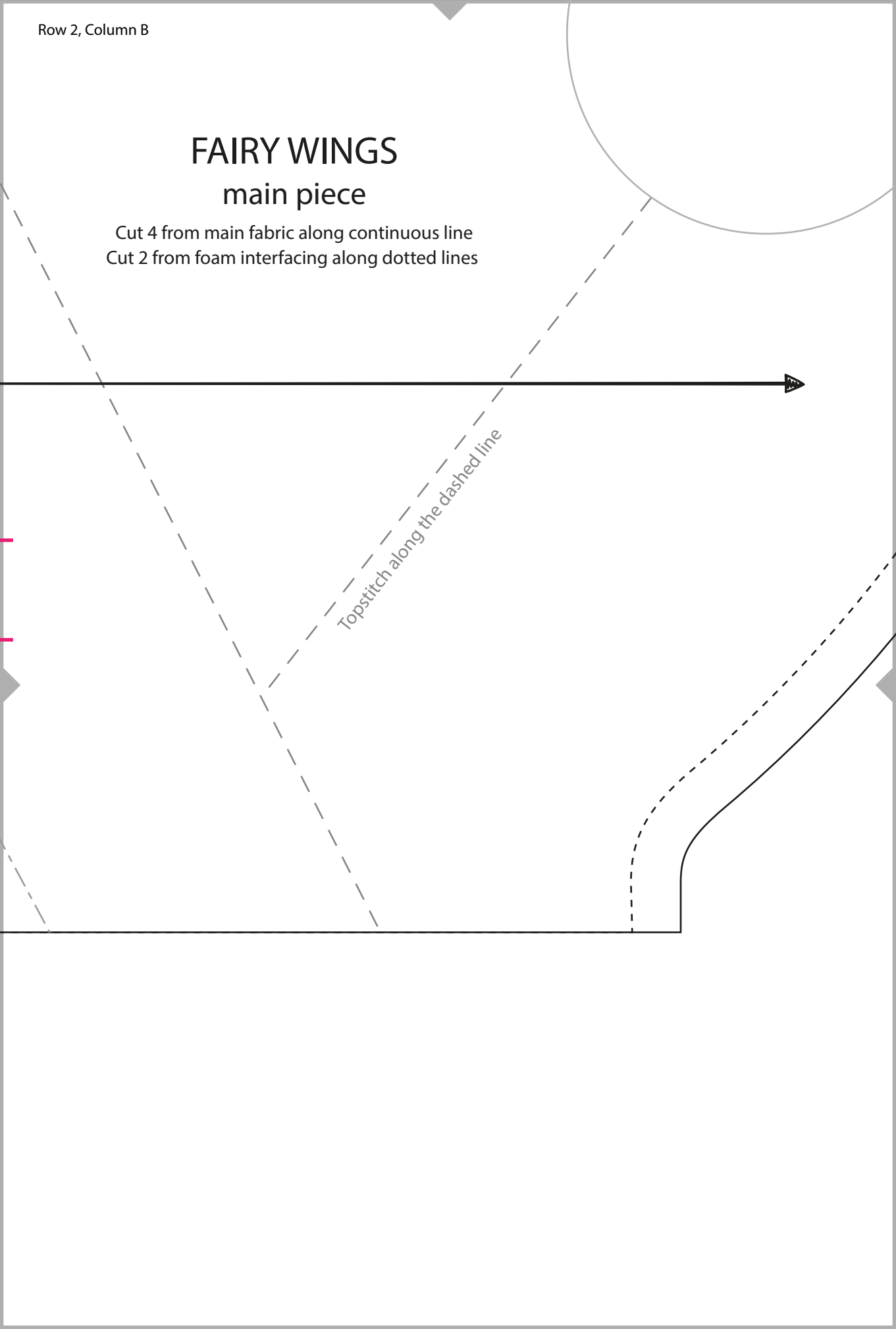


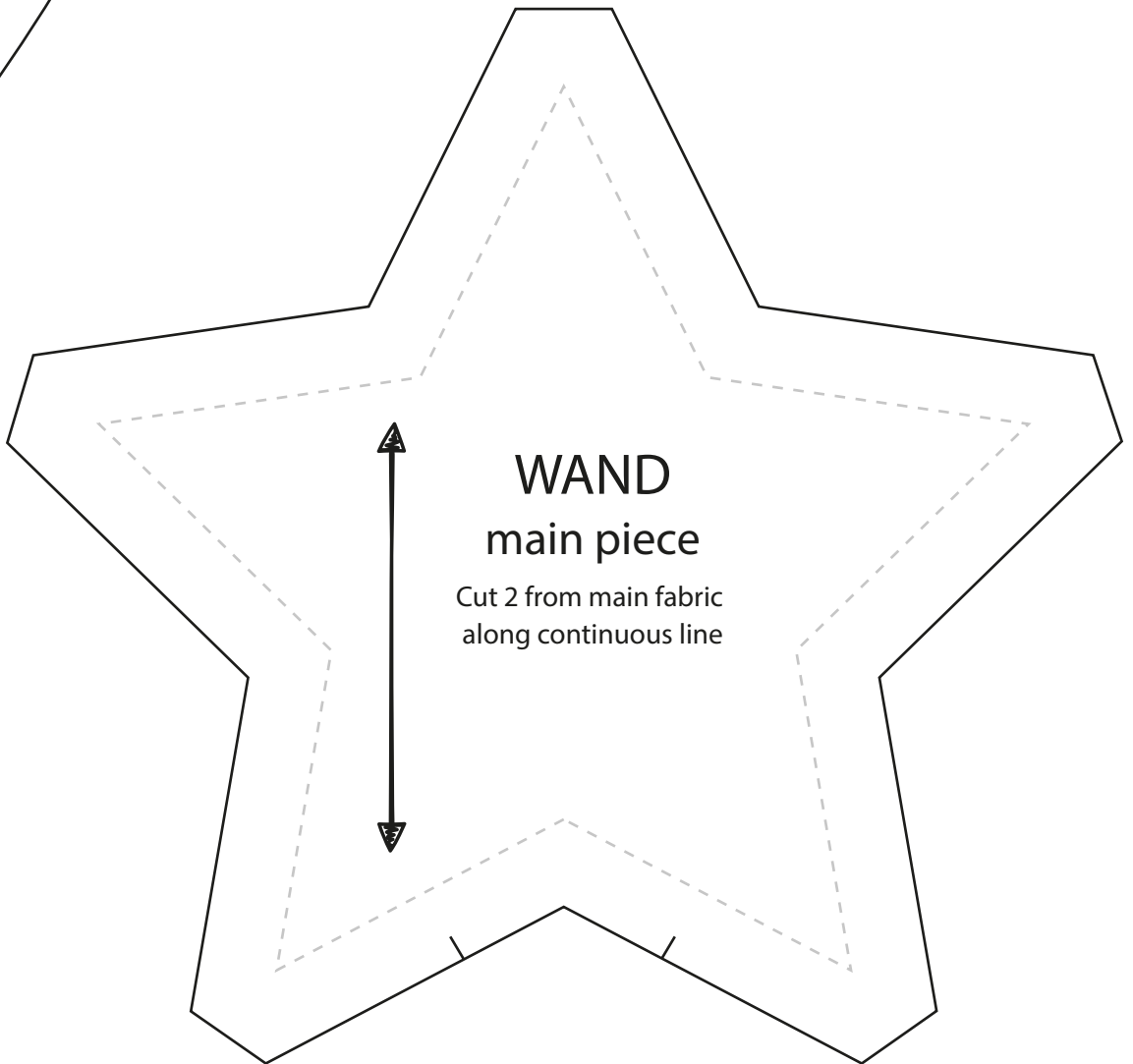
# FAIRY WINGS

## main piece

Cut 4 from main fabric along continuous line  
Cut 2 from foam interfacing along dotted lines

Topstitch along the dashed line





**WAND**  
main piece

Cut 2 from main fabric  
along continuous line