

Cut around the dotted line

Sew Over It

©2021 SEW OVER IT

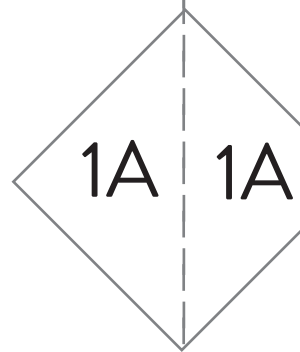
BEGINNER'S GUIDE TO SEWING

THE WRAP SKIRT

6 - 20, A4

SIZE CHART

_____	SIZE 20
_____	SIZE 18
_____	SIZE 16
_____	SIZE 14
_____	SIZE 12
_____	SIZE 10
_____	SIZE 8
_____	SIZE 6

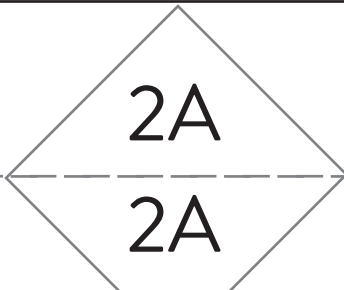


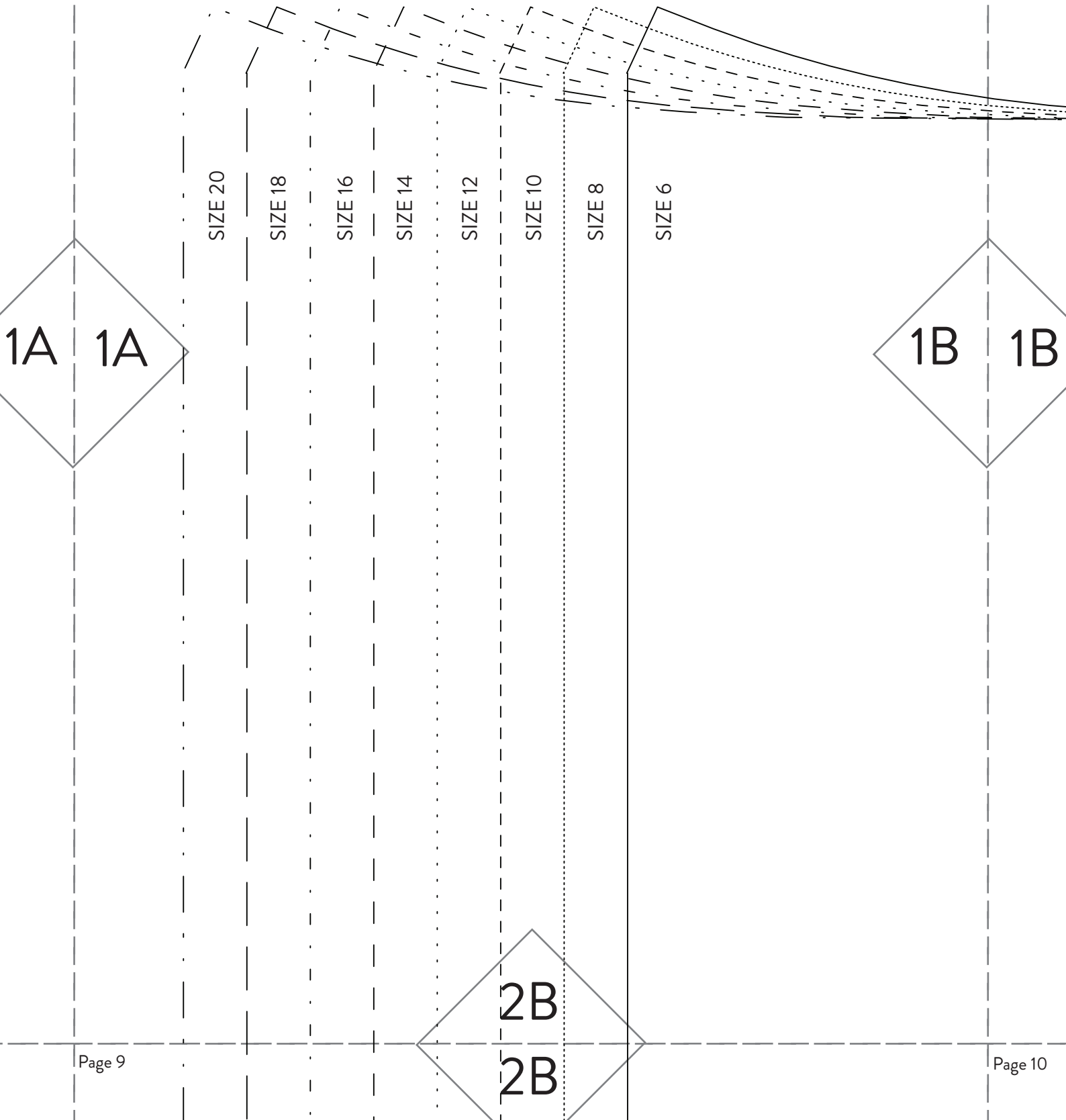
TEST SQUARE

Check this box measures 10cm x 10 cm

sewoverit.com

This pattern is property and copyright of Sew Over It Ltd, 2021
This includes designs, illustrations, images, text and all other aspects. This pattern is for personal use and no part of it may be resold, reproduced or shared in any form. All rights reserved.





1A 1A

1B 1B

2B

2B

SIZE 20

SIZE 18

SIZE 16

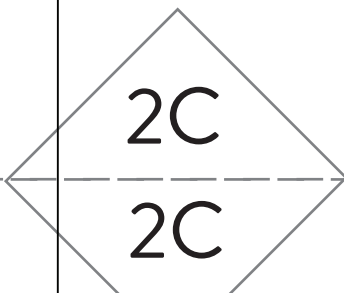
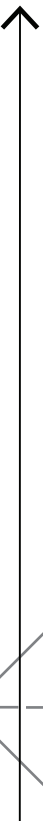
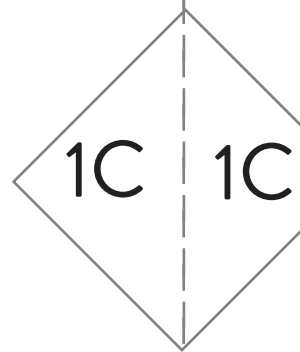
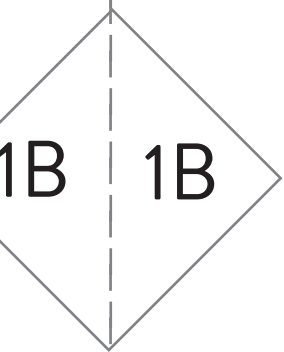
SIZE 14

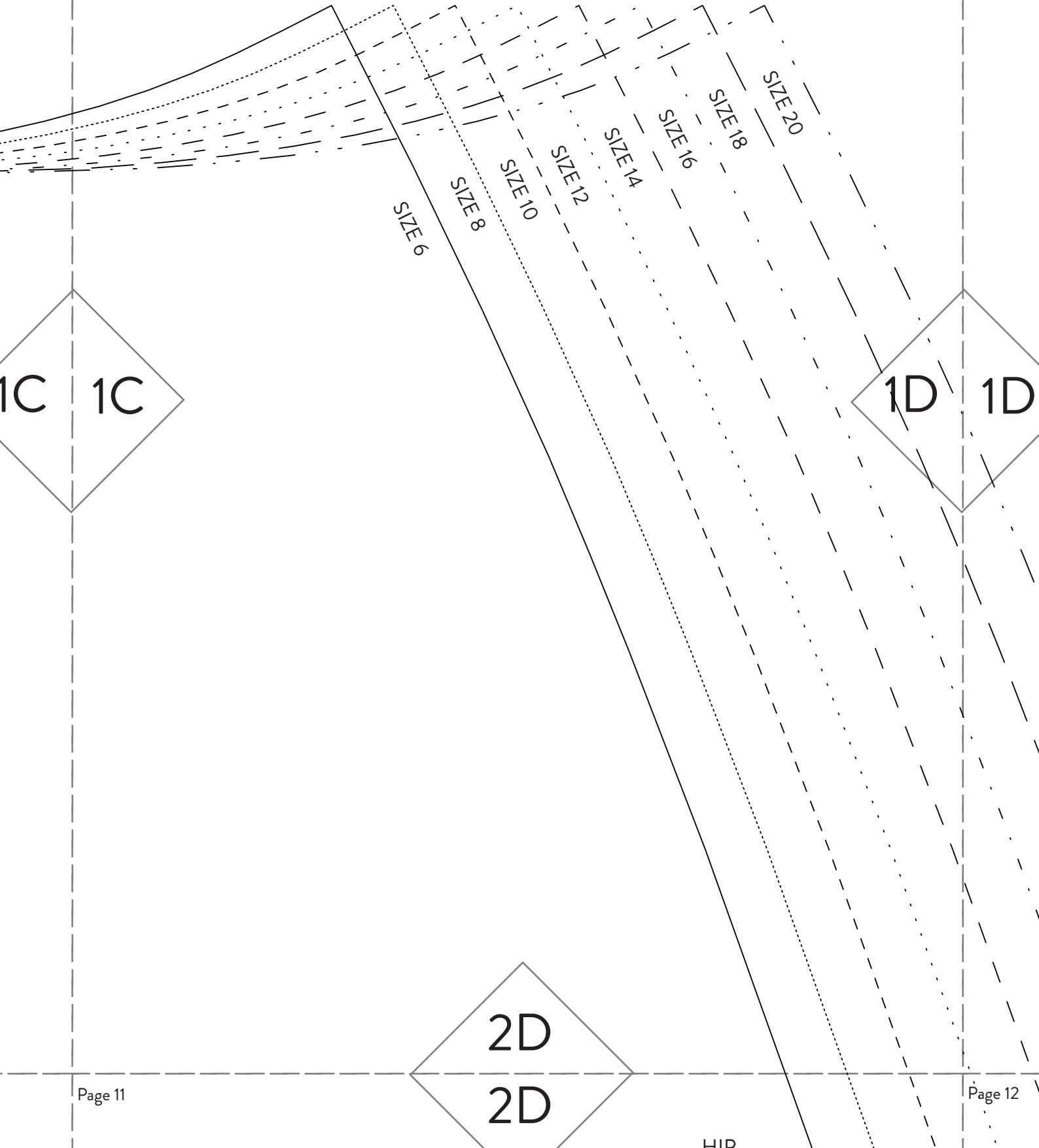
SIZE 12

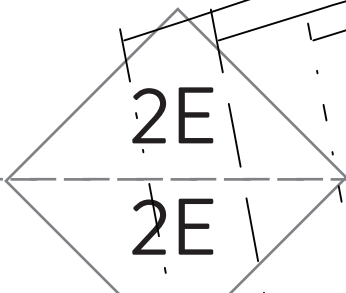
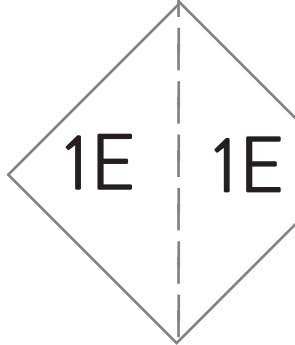
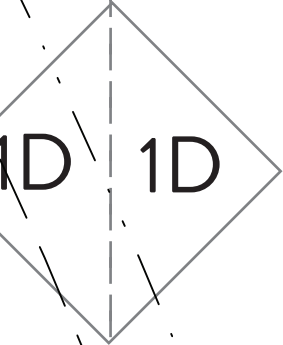
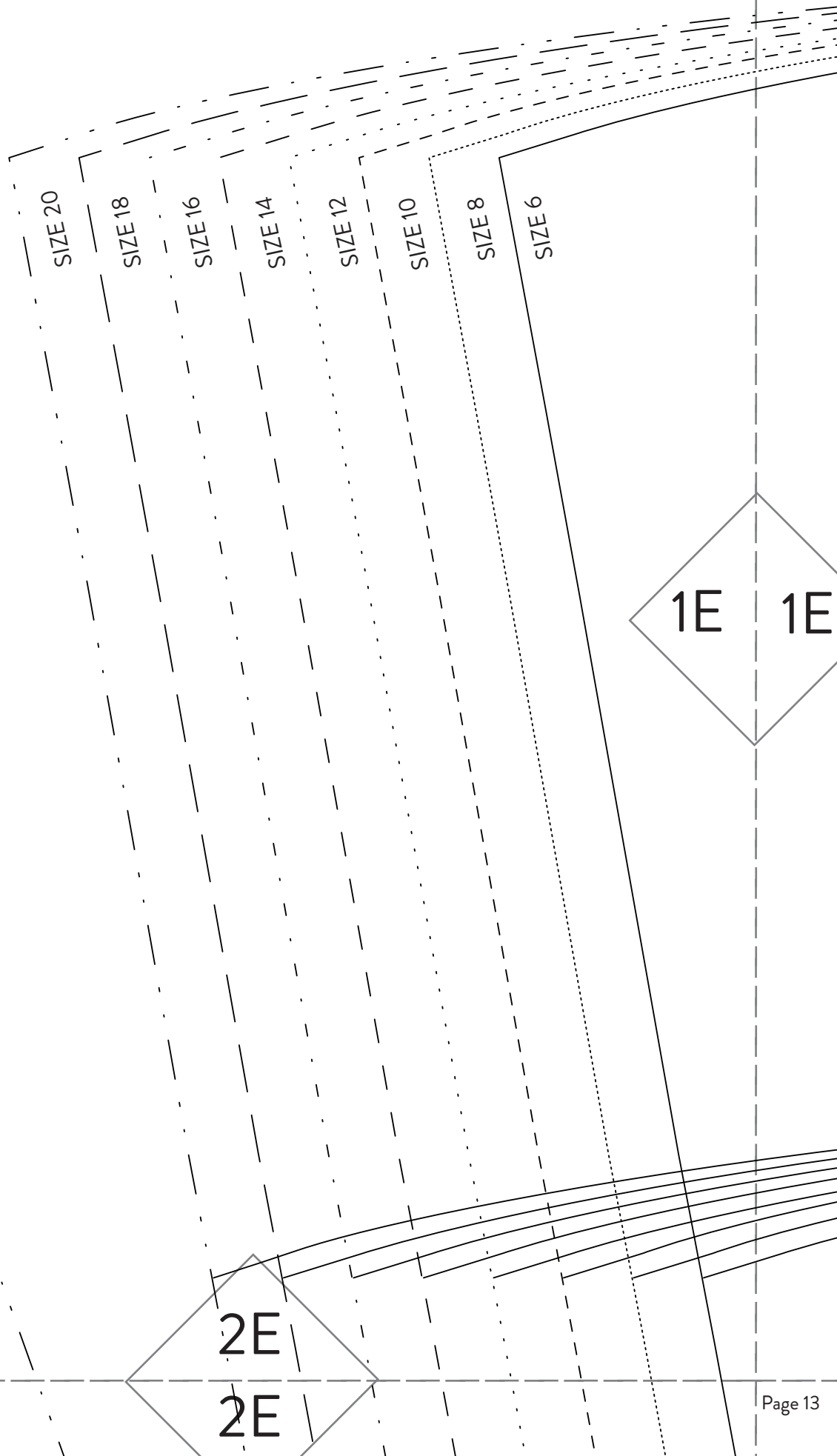
SIZE 10

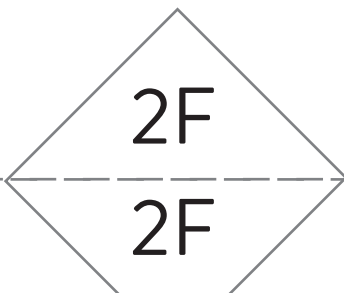
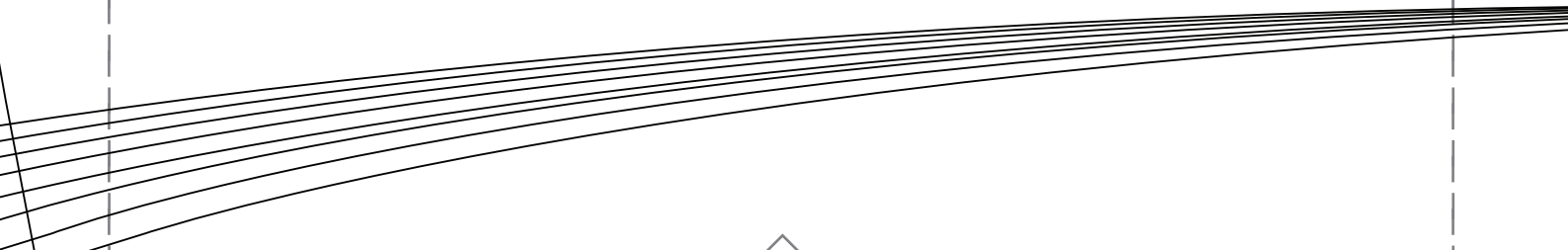
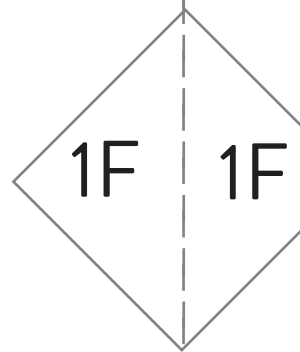
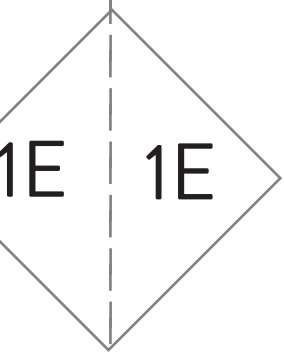
SIZE 8

SIZE 6

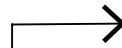
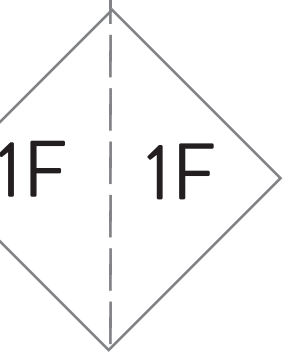




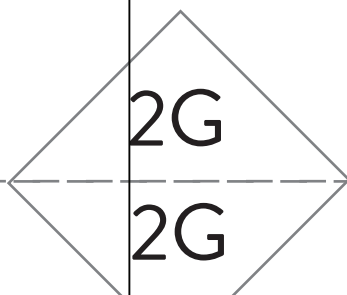




CUT HERE FOR VERSION 1



CUT HERE FOR VERSION 2



2A

2A

SIZE 20

SIZE 18

SIZE 16

SIZE 14

SIZE 12

3A

3A

4A

4A

2B

2B

3A 3A

3B 3B

4B

4B

2C

2C

A

Sew Over It

THE WRAP SKIRT

FRONT SKIRT

CUT PAIR

GRAINLINE / CENTRE FRONT

3B

3B

3C

3C

4C

4C

2D

2D

HIP

3C 3C

3D 3D

4D

4D

2E

2E

3D 3D

3E 3E

4E

4E

2F

2F

3E 3E

3F 3F

4F

4F

2G

2G

3F 3F

4G
GRAINLINE

4G

CENTRE BACK

4A

4A

SIZE 10

SIZE 8

SIZE 9



6A

6A

5A

5A

4B

4B

5A 5A

5B 5B

6B

6B

4C

4C

5B 5B

5C 5C

CUT HERE FOR VERSION 2

6C

6C

4D

4D

5C 5C

5D 5D

6D

6D

4E

4E

5D 5D

5E 5E

6E

6E

4F

4F

5E

5E

dIH

5F

5F

6F

6F

THE WRAP SKIRT
BACK SKIRT
CUT 1 ON FOLD

**SEW
Over It**

B

4G
4G
RANKLINE

CENTRE

FOLDLINE



6G
6G

6A

6A

7A

7A

THE WRAP SKIRT

WAIST TIE - LONG

CUT 1 (ONCE JOINED TO PIECE E2)

GRAINLINE

**Sew
Over It**

8A

8A

6B

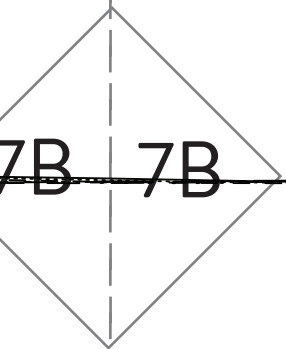
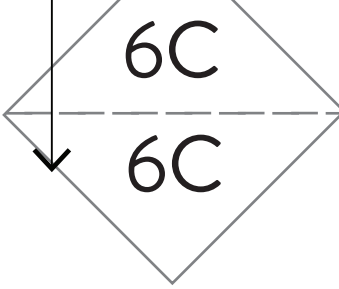
6B

7A 7A

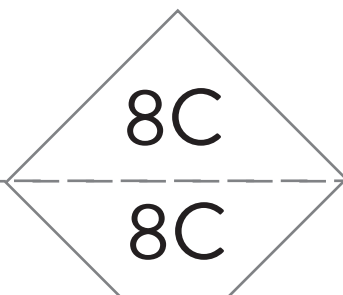
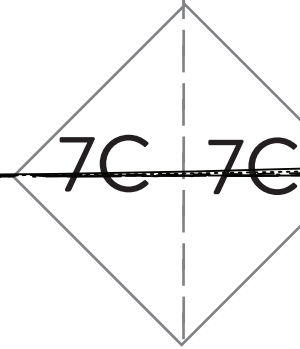
7B 7B

8B

8B



CUT HERE FOR VERSION 1



6D

6D

7C 7C

7D 7D

8D

8D

6E

6E

SIZE 6

SIZE 8

SIZE 10

SIZE 12

SIZE 14

SIZE 16

SIZE 18

SIZE 20

7D 7D

7E 7E

GRAIN

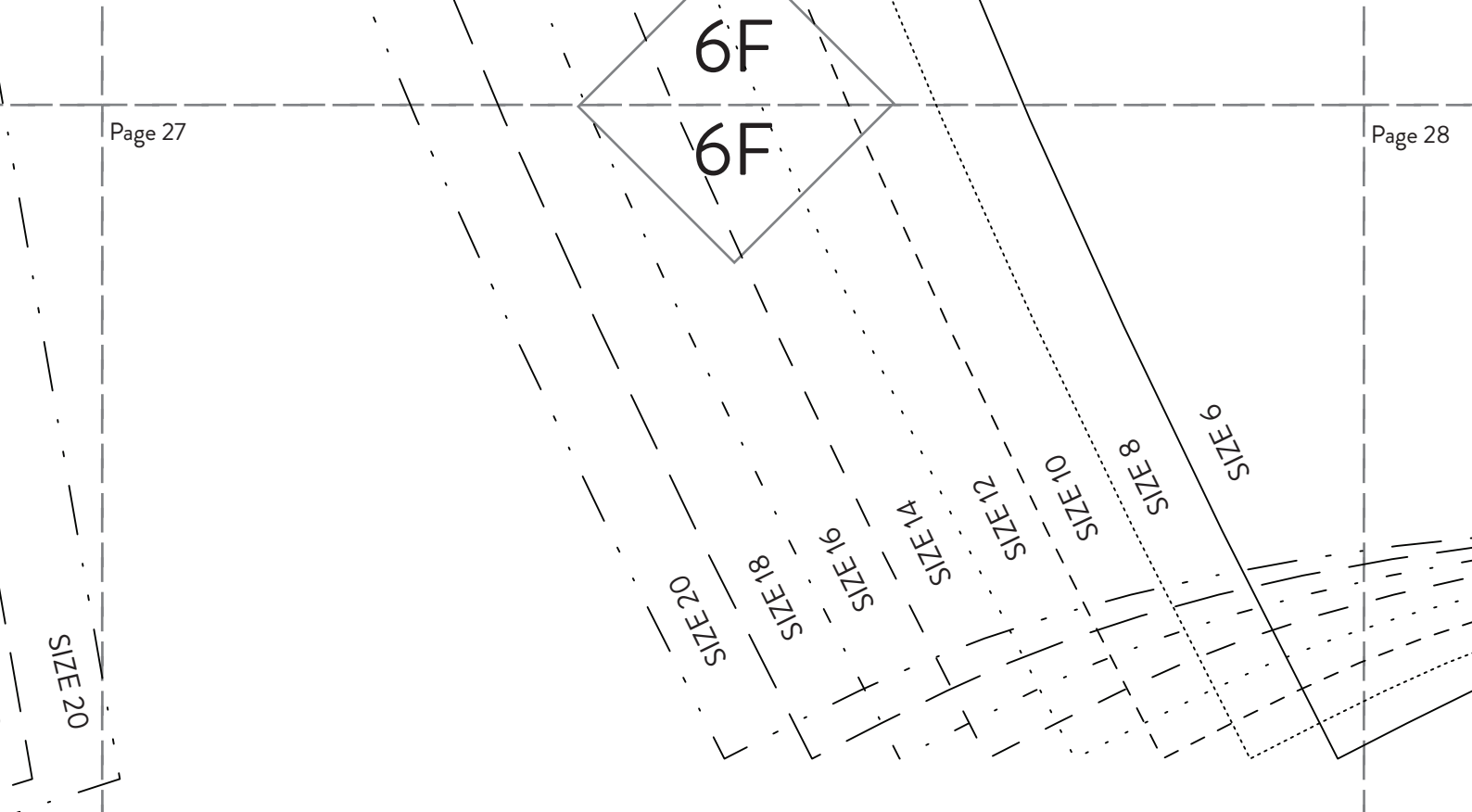
SNIP THESE LINES ACCURATELY AS SMALL NOTCHES. THIS WILL BECOME THE GAP FOR THE TIE

D

Sew Over It

8E

8E



GRAINLINE

**W
r
It**

THE WRAP SKIRT

WAISTBAND - SECTION B

CUT 1 RIGHT SIDE UP
CUT 1 INTERFACING

SIZE 6

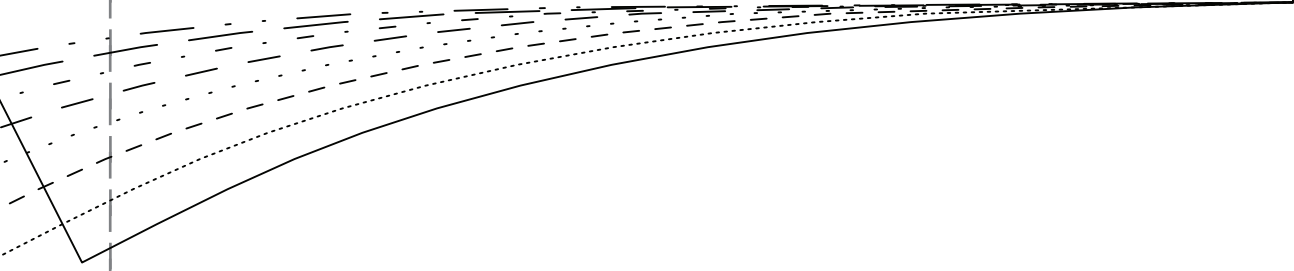
SIZE 8

8F

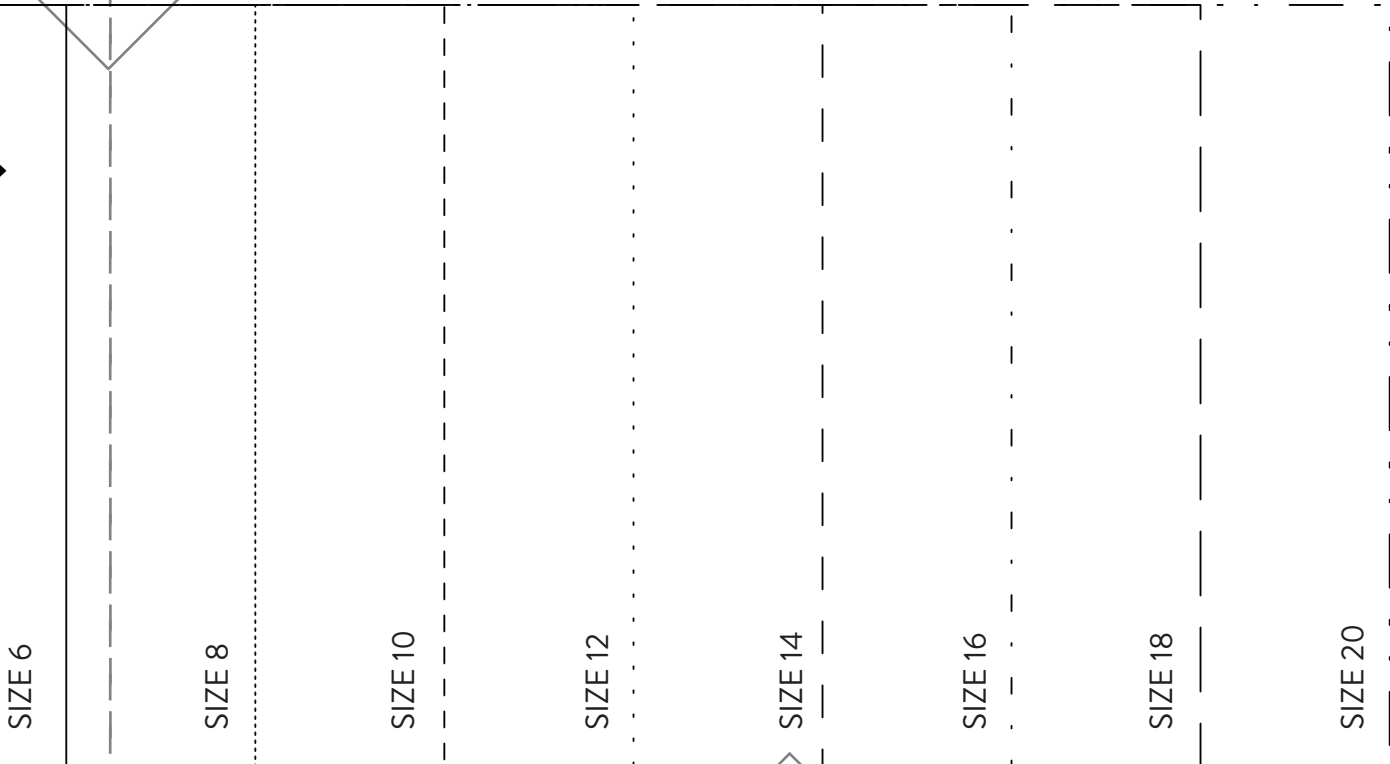
8F

6G

6G



7F 7F



SIZE 6

SIZE 8

SIZE 10

SIZE 12

SIZE 14

SIZE 16

SIZE 18

SIZE 20

8G

8G

SO
8A
8A

E¹

SIZE 20

SIZE 18

9A 9A

10A

10A

8B

8B

SIZE 20

SIZE 18

SIZE 16

SIZE 14

SIZE 12

SIZE 10

SIZE 8

SIZE 6

9A 9A

9B 9B



10B

10B

8C

8C

20 18 16 14 12 10 8 6



CENTRE FRONT

C

20 18 16 14 12 10 8 6

9B 9B

9C 9C

F

8D

8D

GRAINLINE

Sew Over It

SIDE SEAM

THE WRAP SKIRT

WAISTBAND -

CUT 1 RIGHT S

CUT 1 INTERFA

9C 9C

9D 9D

GRAINLINE

Sew Over It

THE WRAP SKIRT

WAIST TIE - SHORT

CUT 1

8E

8E

6 8 10 12 14 16 18 20

THE WRAP SKIRT

WAISTBAND - SECTION A

CUT 1 RIGHT SIDE UP
CUT 1 INTERFACING

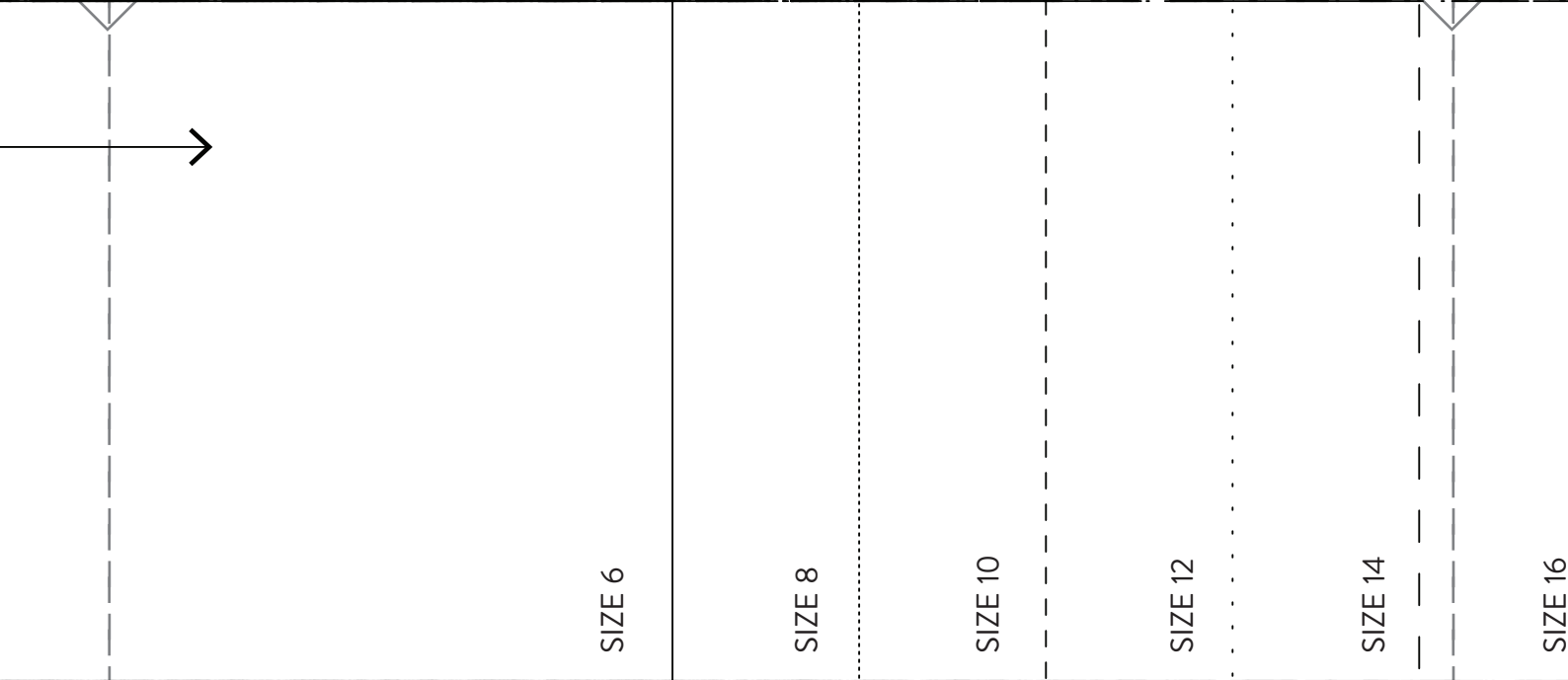
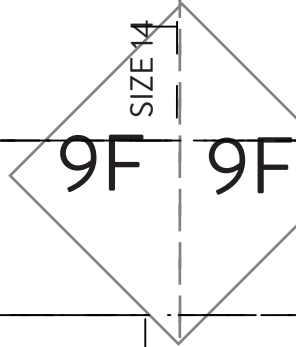
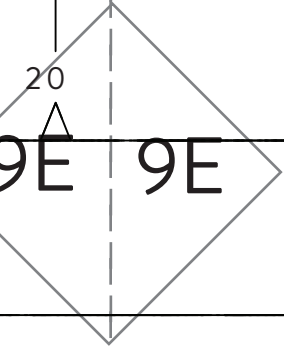
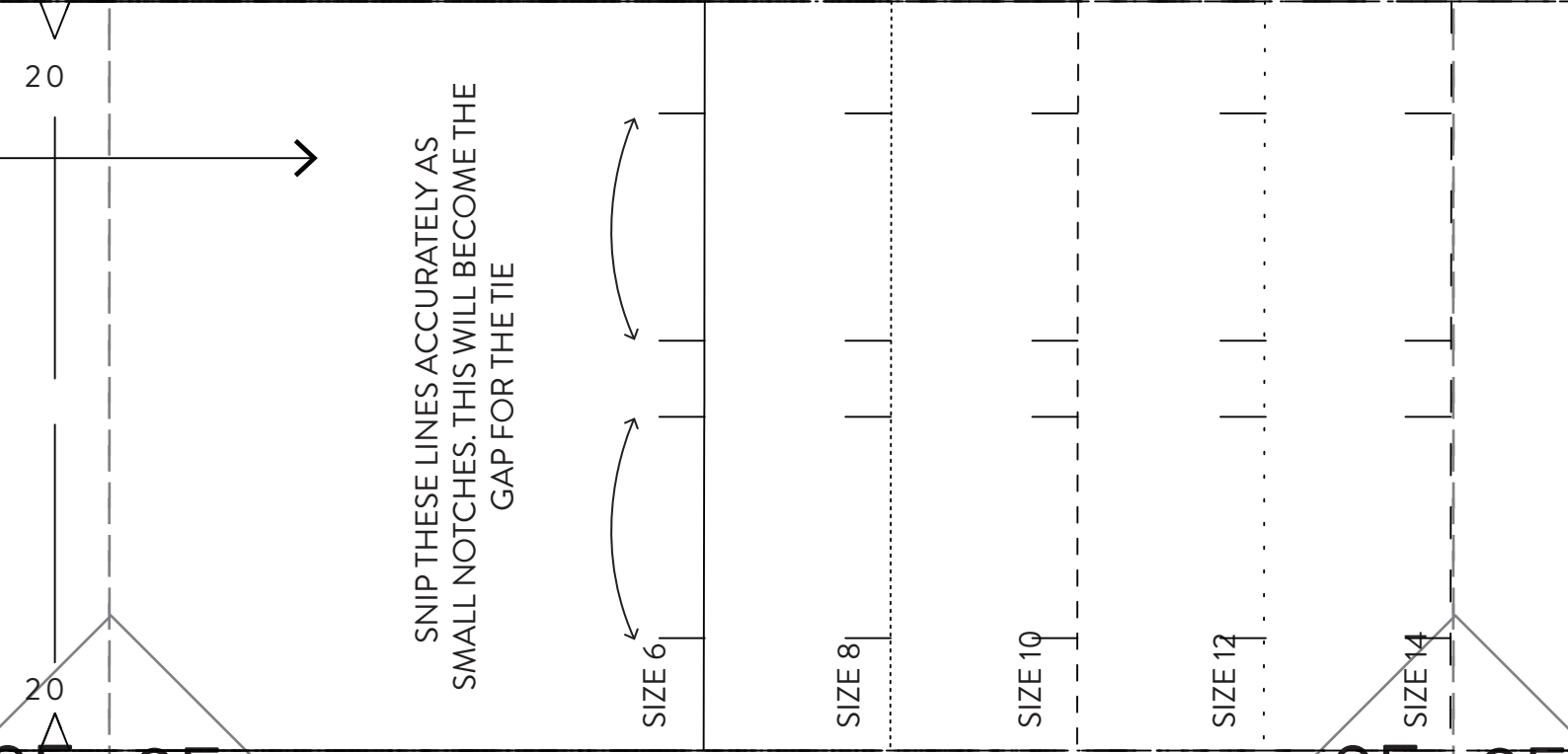
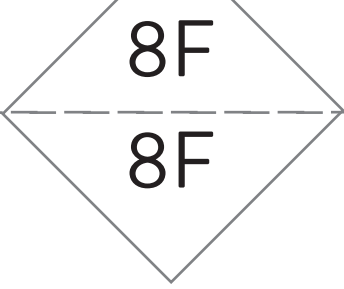
CENTRE BACK

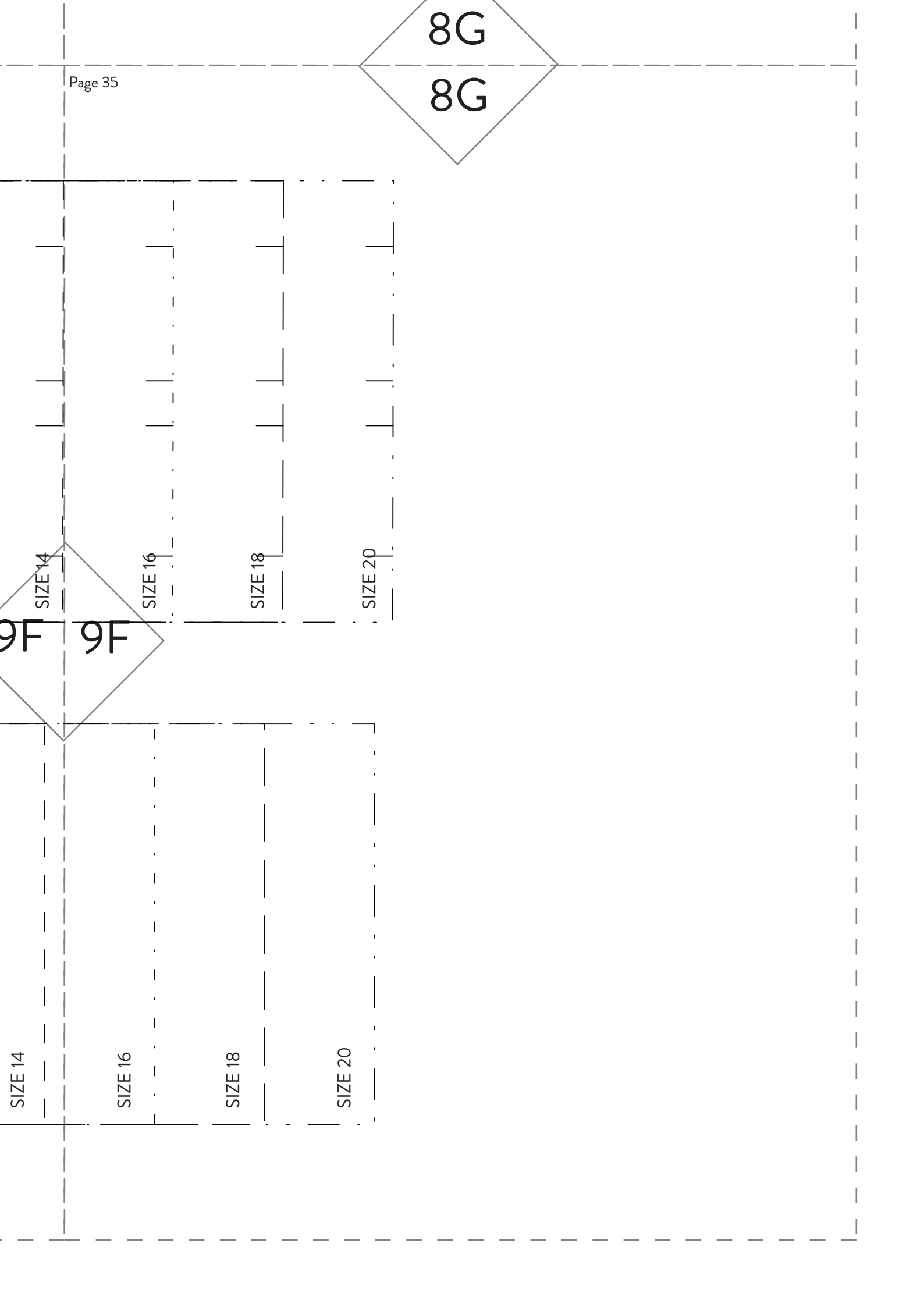
6 8 10 12 14 16 18 20

9D 9D

9E 9E







SIZE 14

SIZE 16

SIZE 18

SIZE 20

9F

8G

8G

SIZE 14

SIZE 16

SIZE 18

SIZE 20

10A

10A

ATTACH TO E2
ALONG THIS LINE

11A

11A



**E² Sew
Over It**

10B

10B

11A 11A

THE WRAP SKIRT

WAIST TIE - LONG

CUT 1 (ONCE JOINED TO PIECE E1)

ATTACH TO E1
ALONG THIS LINE