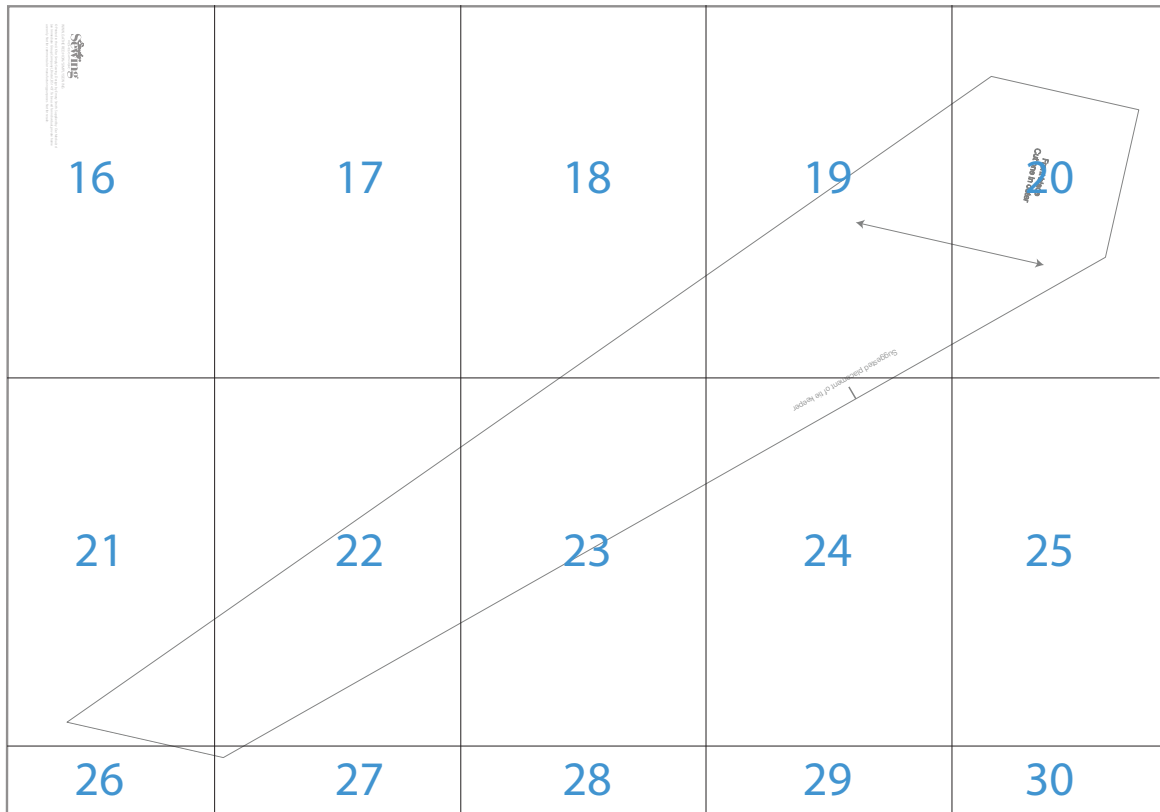
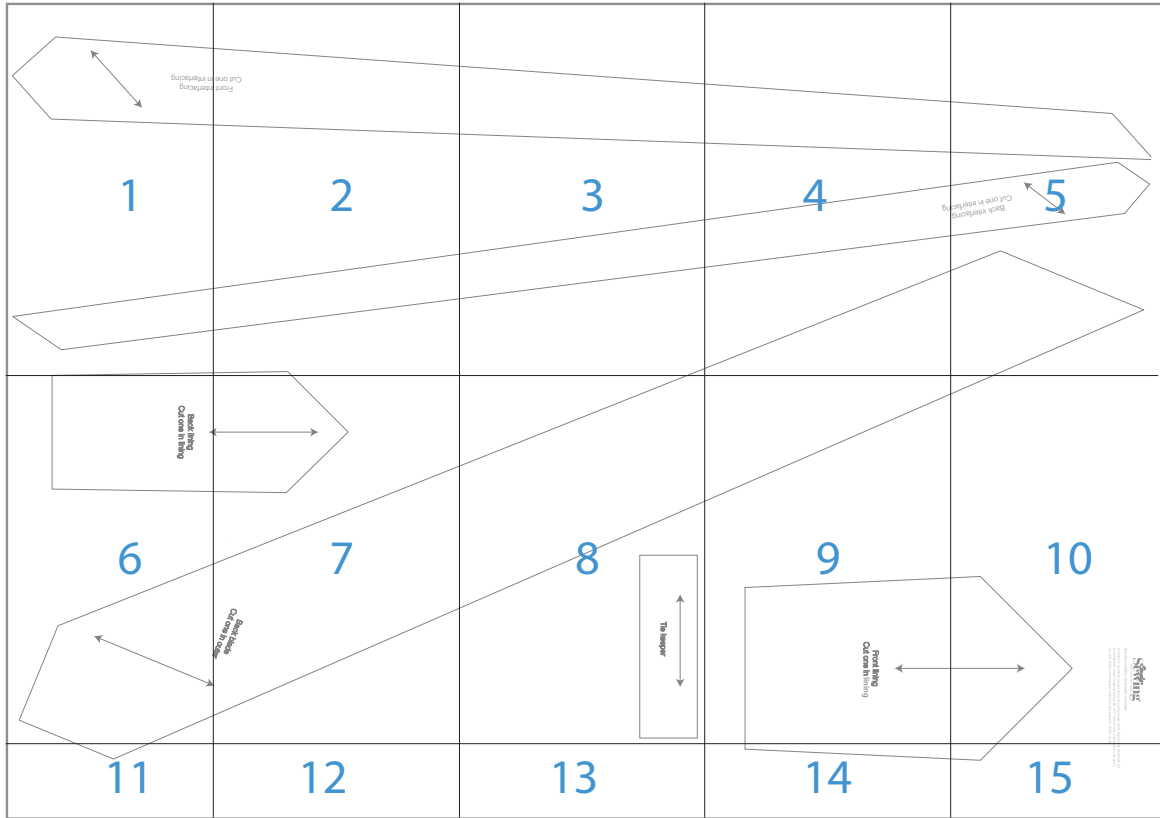
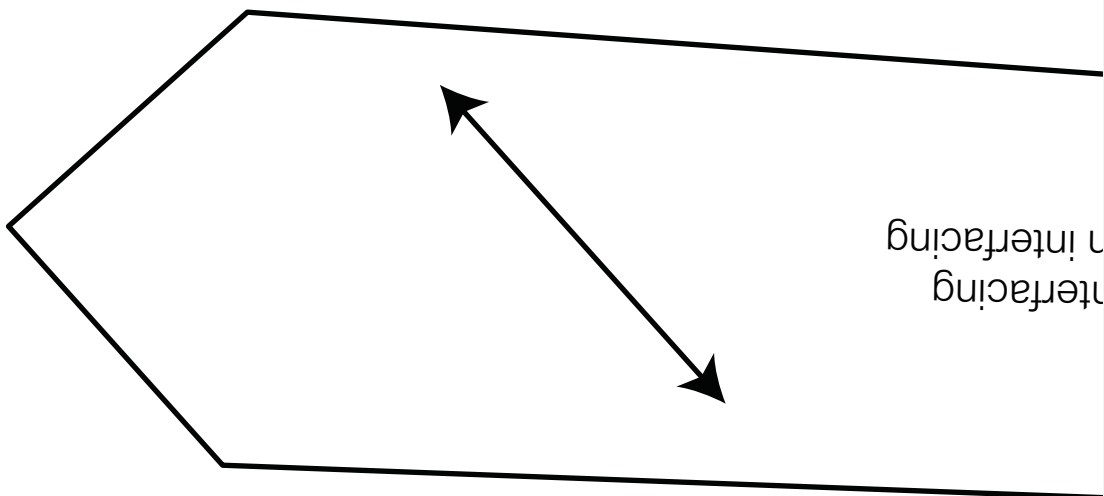


TIE PATTERN

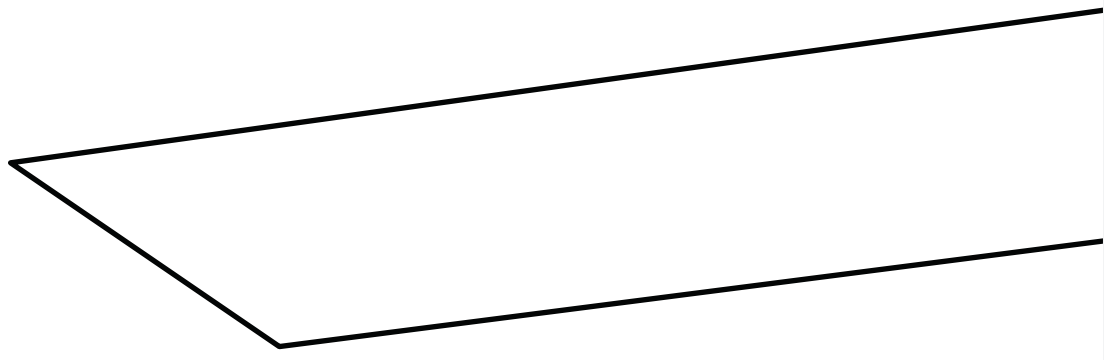
HOW TO PRINT THIS PATTERN

Print out this 30-page PDF on to A4 paper. Trim away the shaded border from each page and position the pages as below to assemble the pattern...



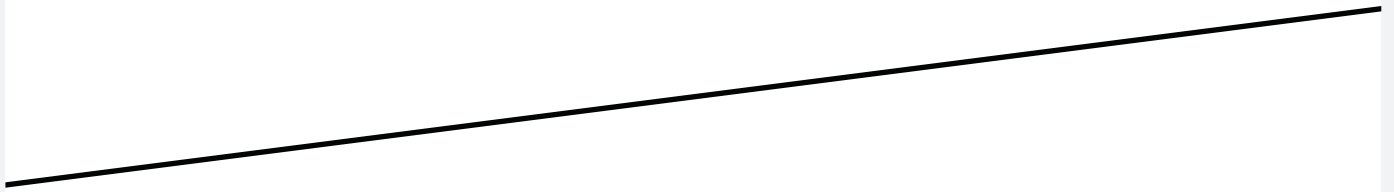
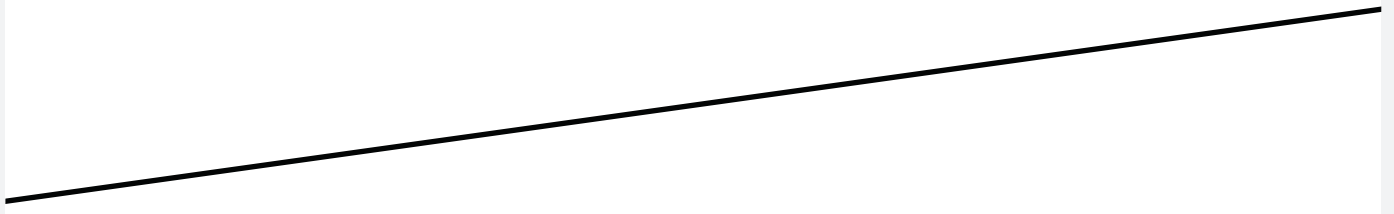


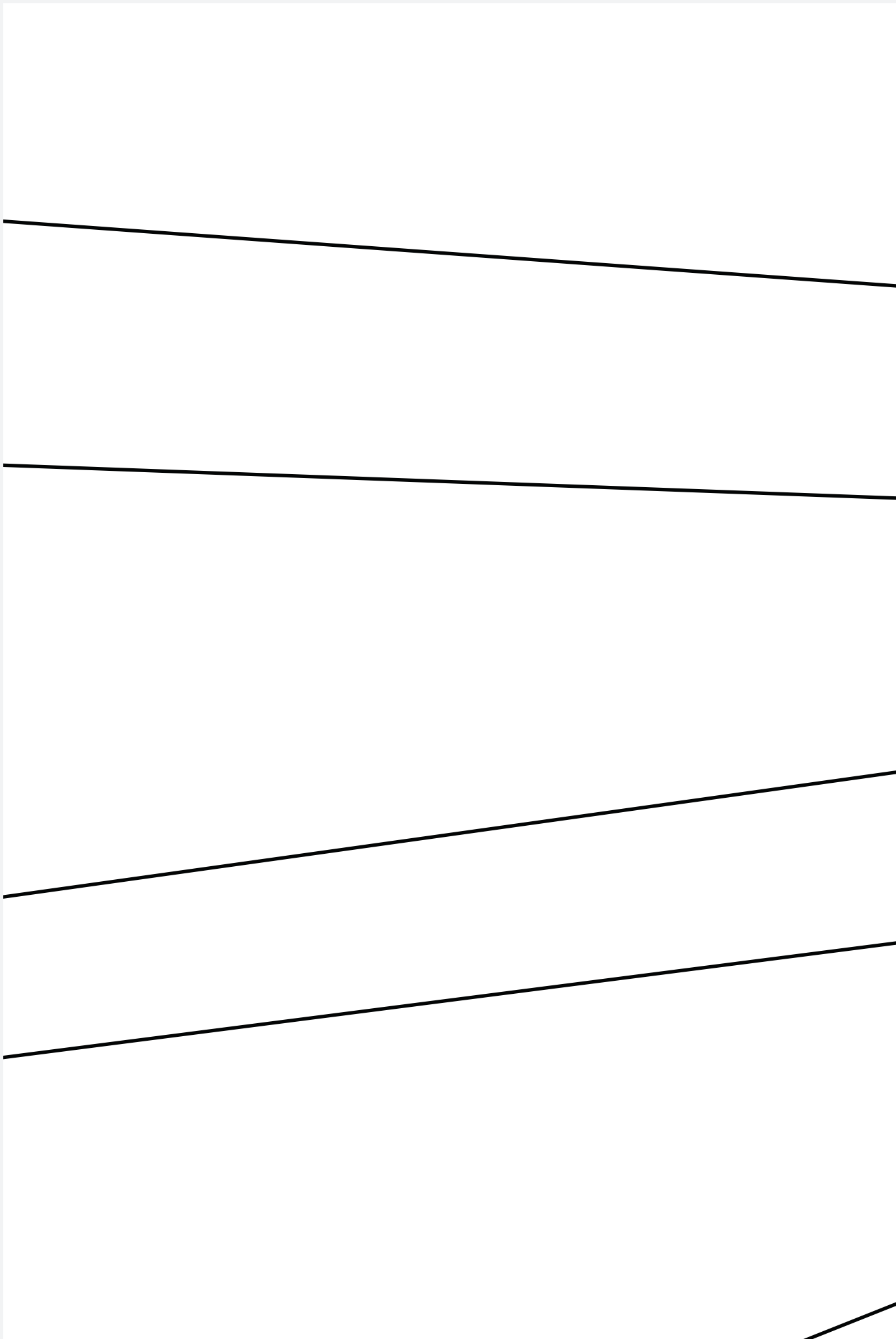
nterfacing
n interfacing

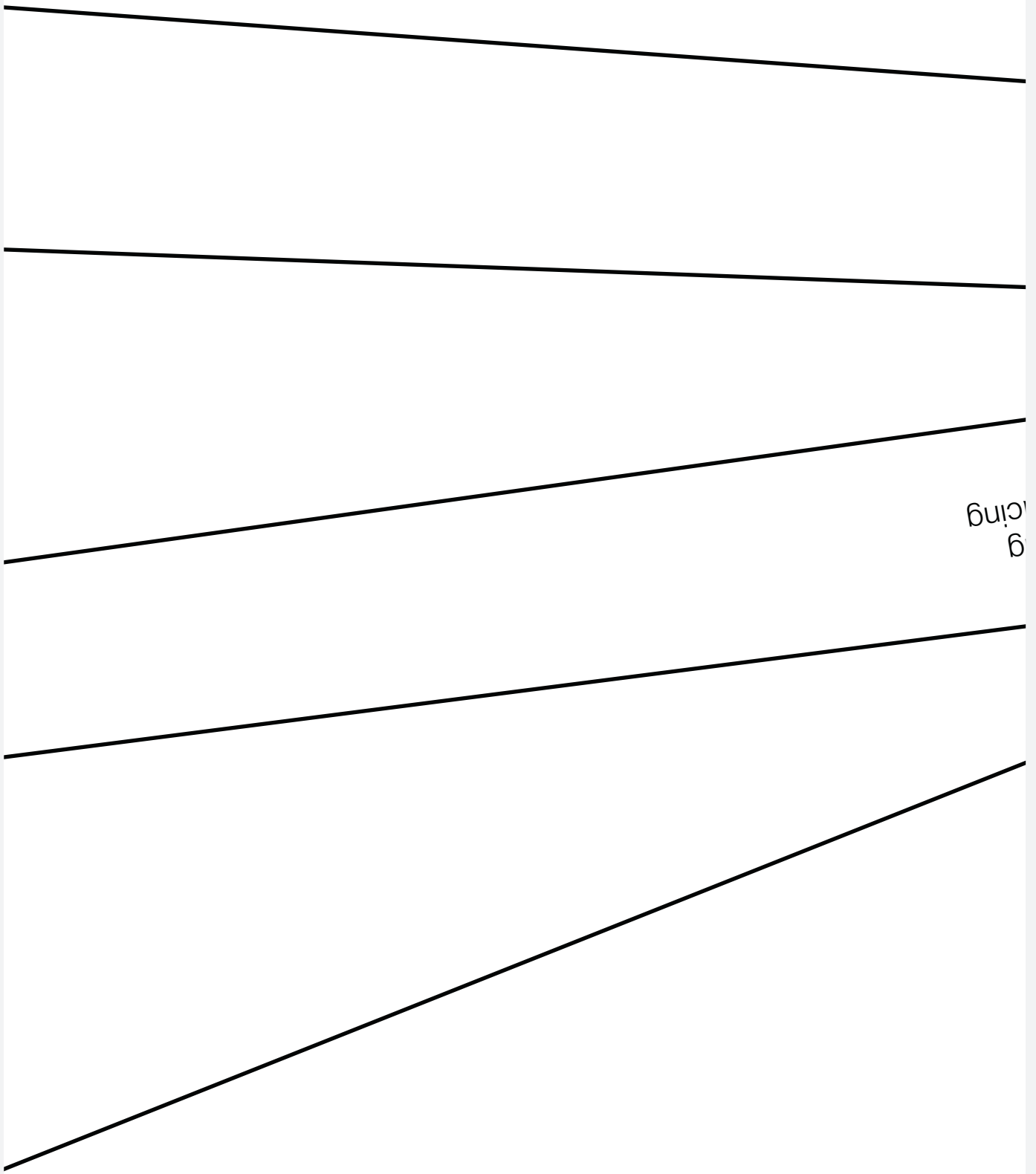




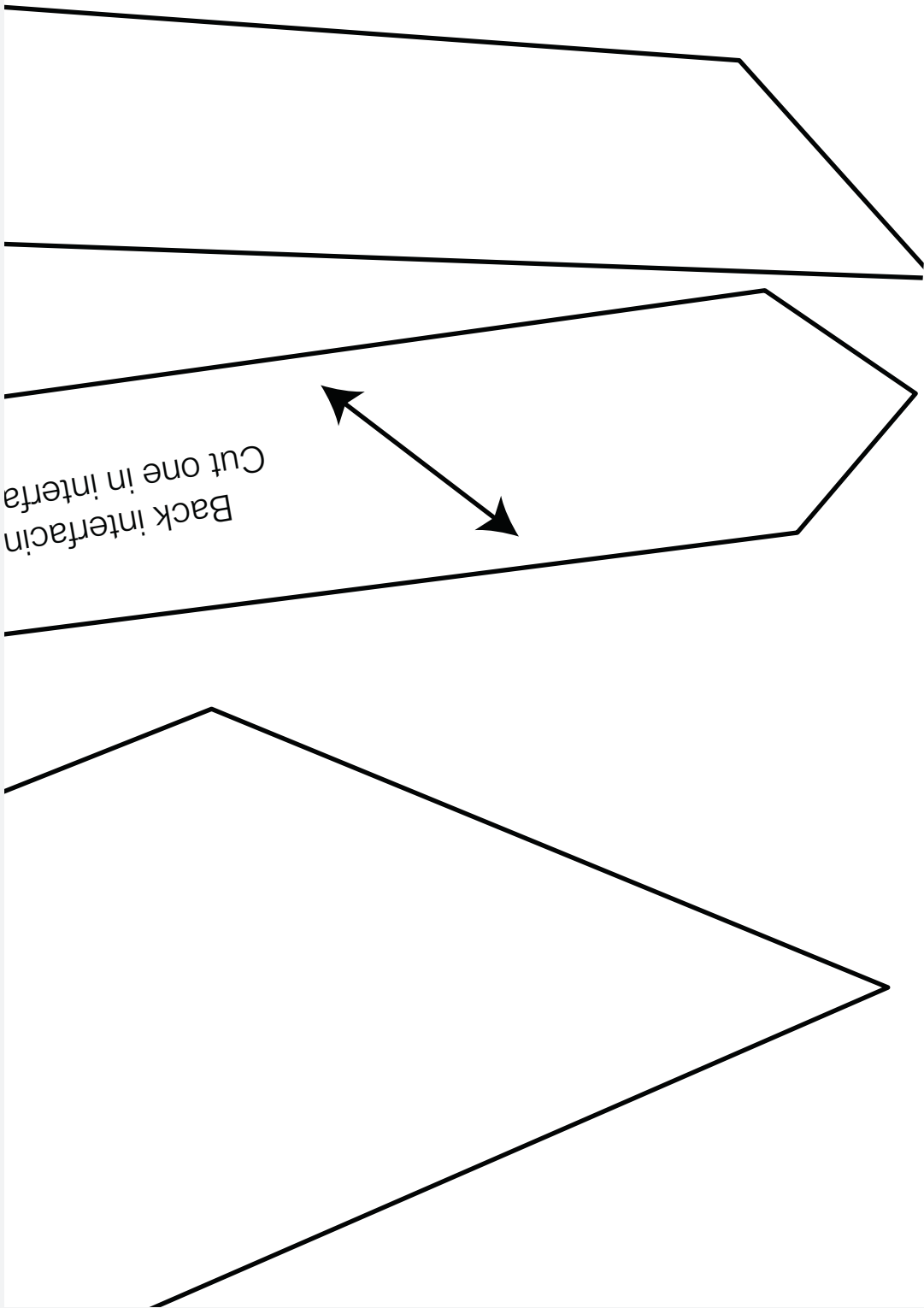
Front ir
Cut one li



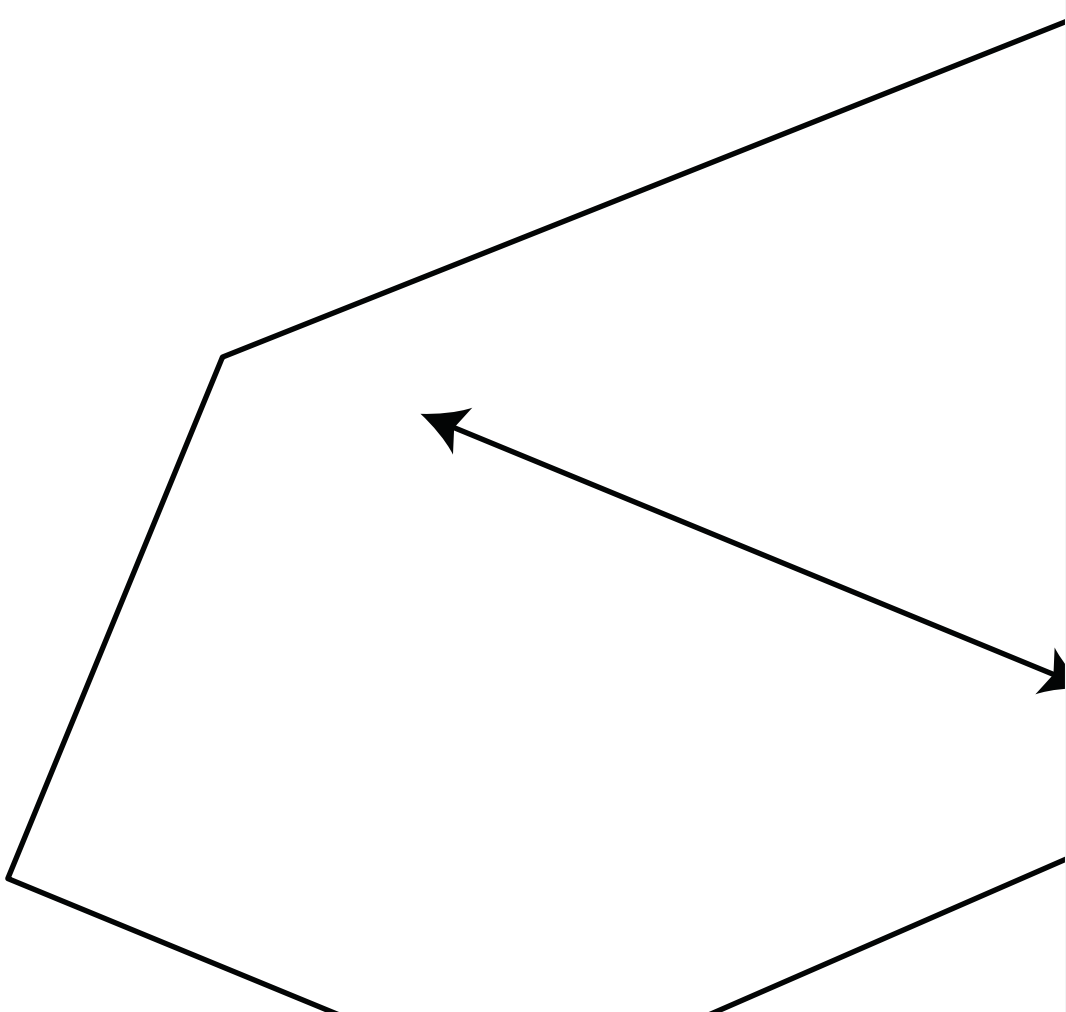


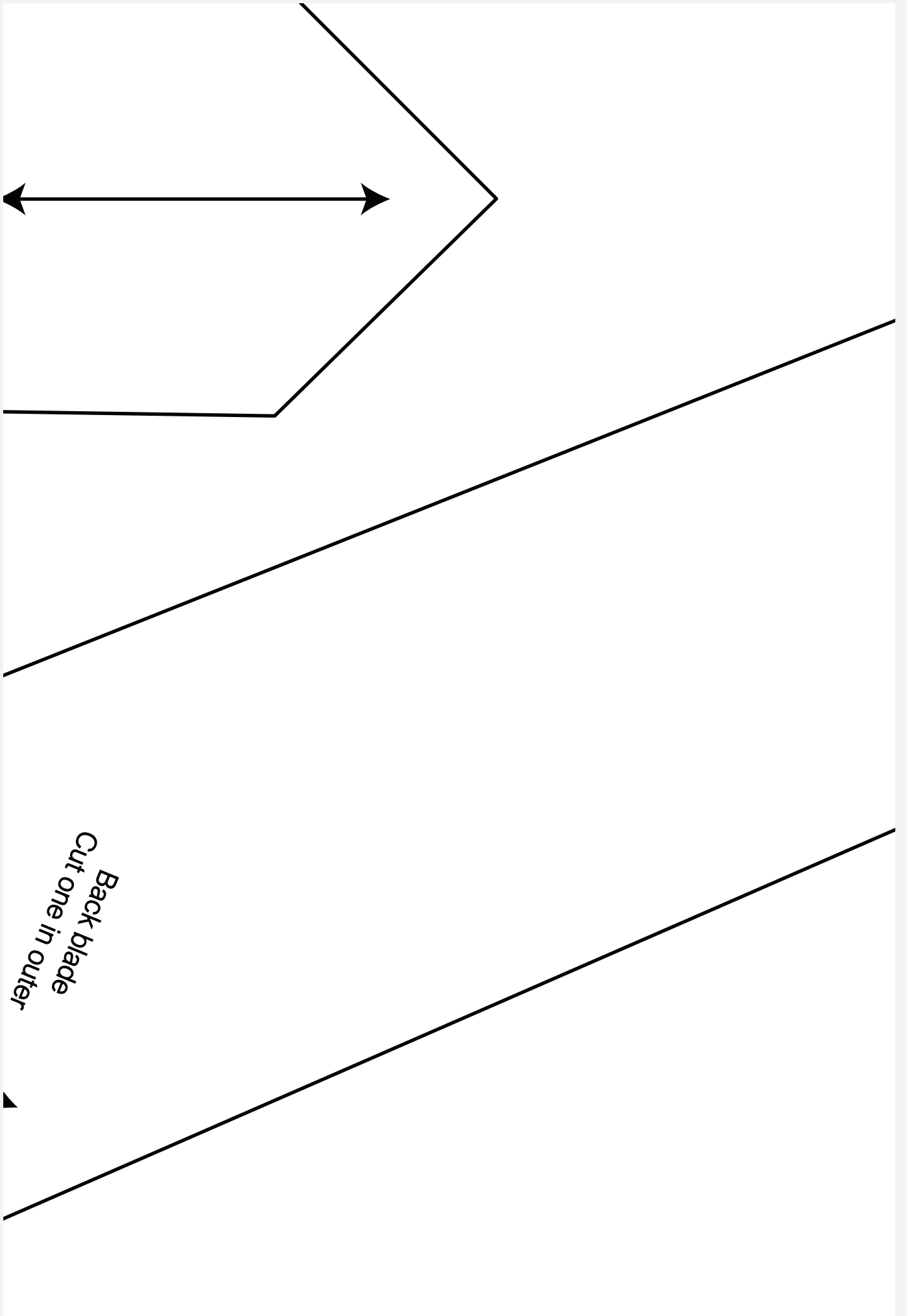


6
6

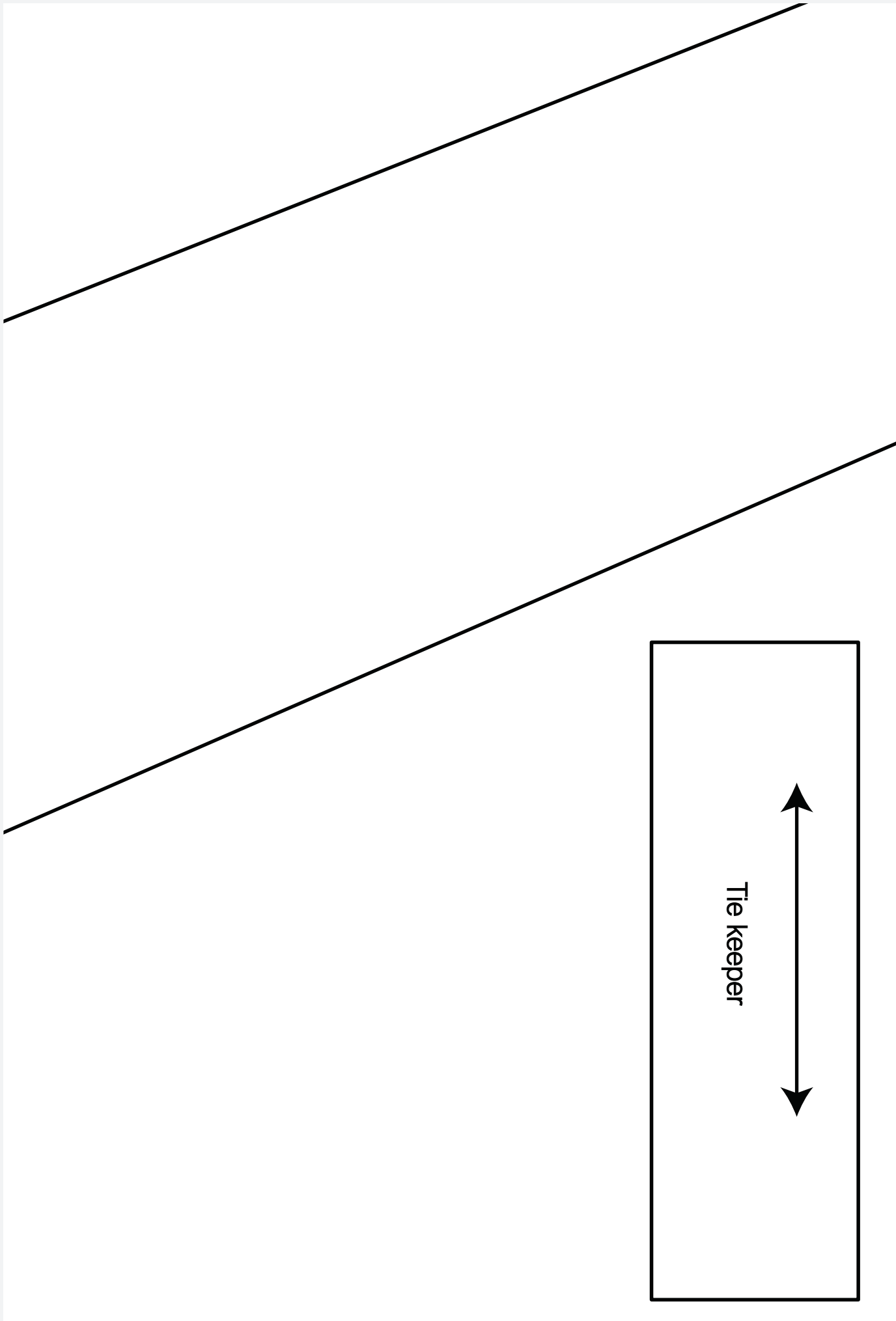


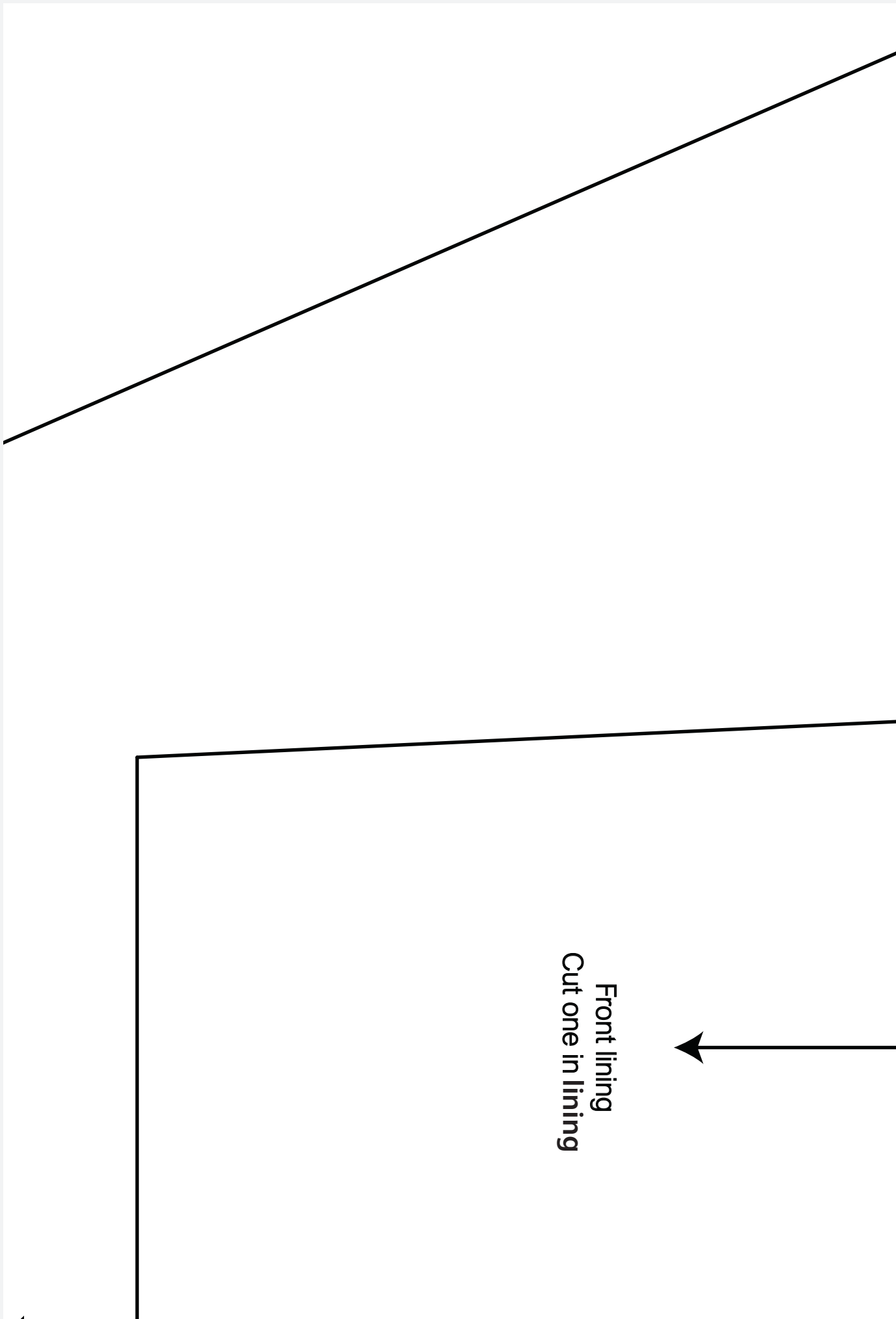
Back lining
Cut one in lining



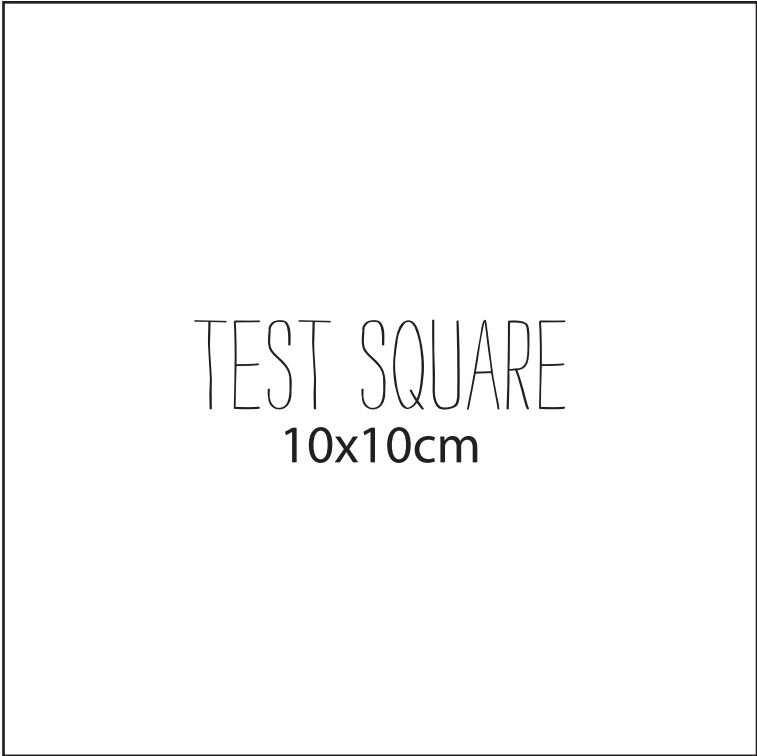


*Back blade
Cut one in outer*





Front lining
Cut one in lining



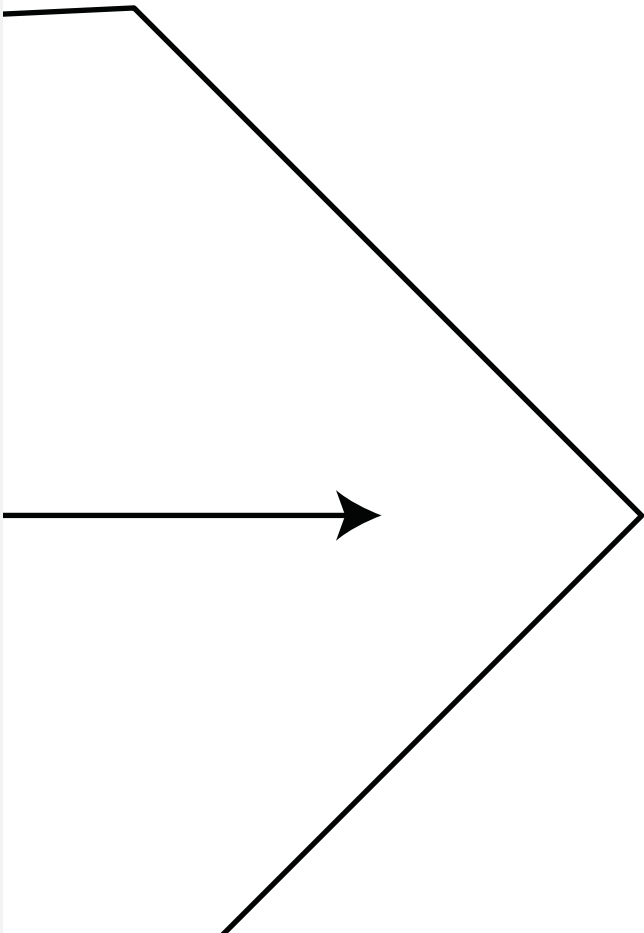
TEST SQUARE
10x10cm

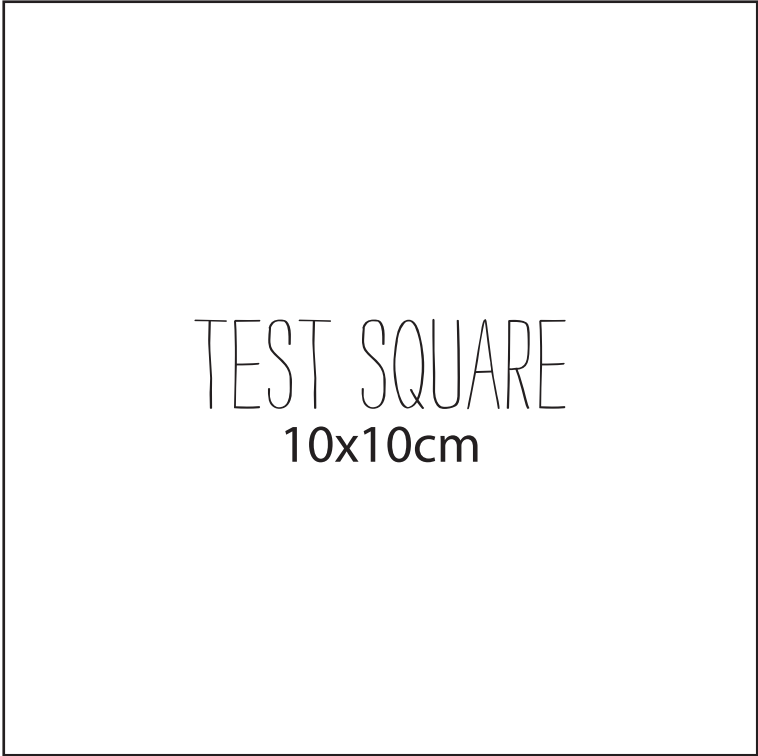


Simply Sewings
FRESH IDEAS WITH FABRIC

WWW.GATHERED.HOW/SIMPLYSEWING

© Printed in the UK for Simply Sewing. Design by Emery Smith. Supplied (an Immediate Group Company), Bristol, BS1 4ST. To be used for individual use only. Not for commercial or manufacturing purposes. Not for resale.





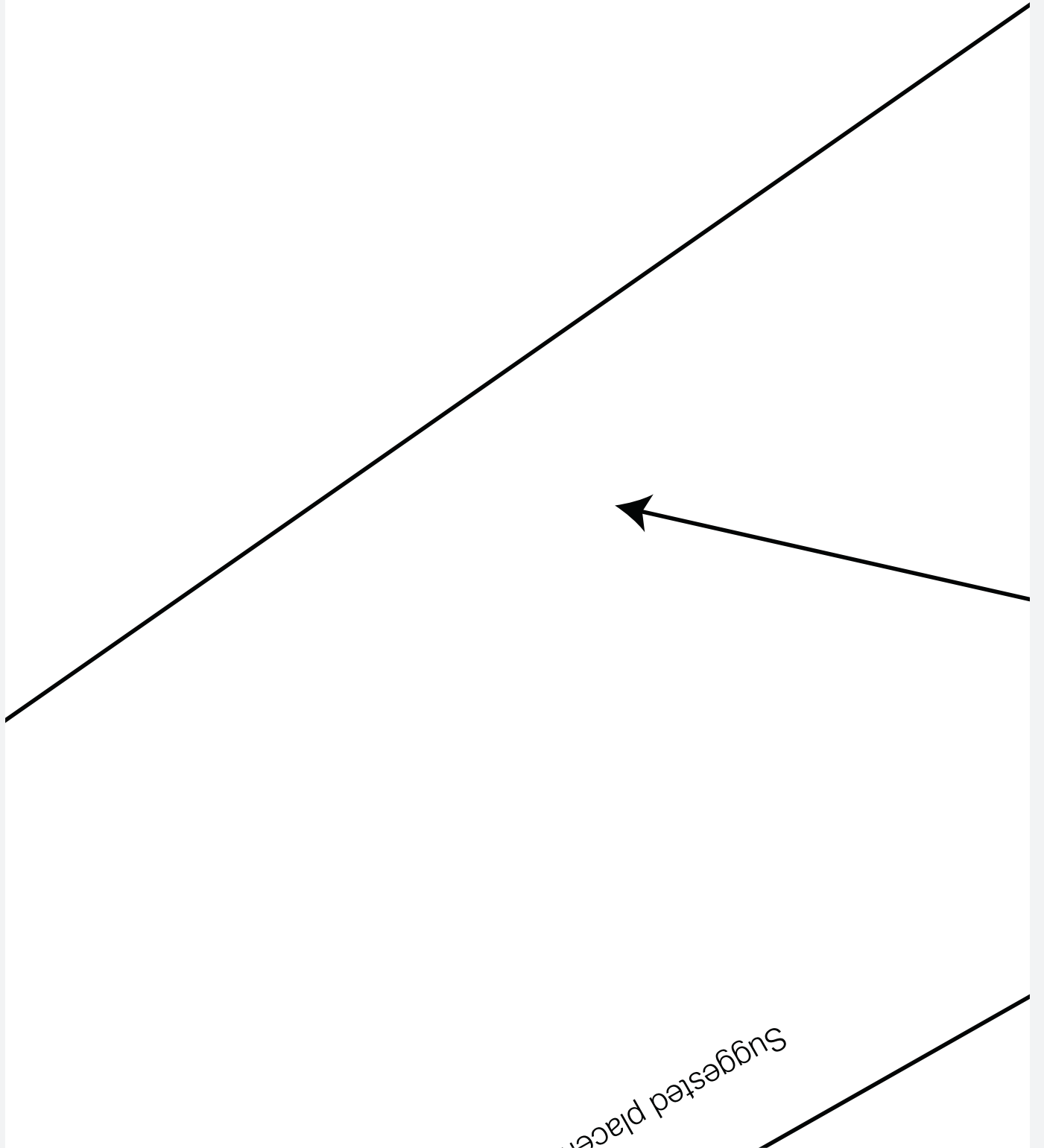
TEST SQUARE
10x10cm

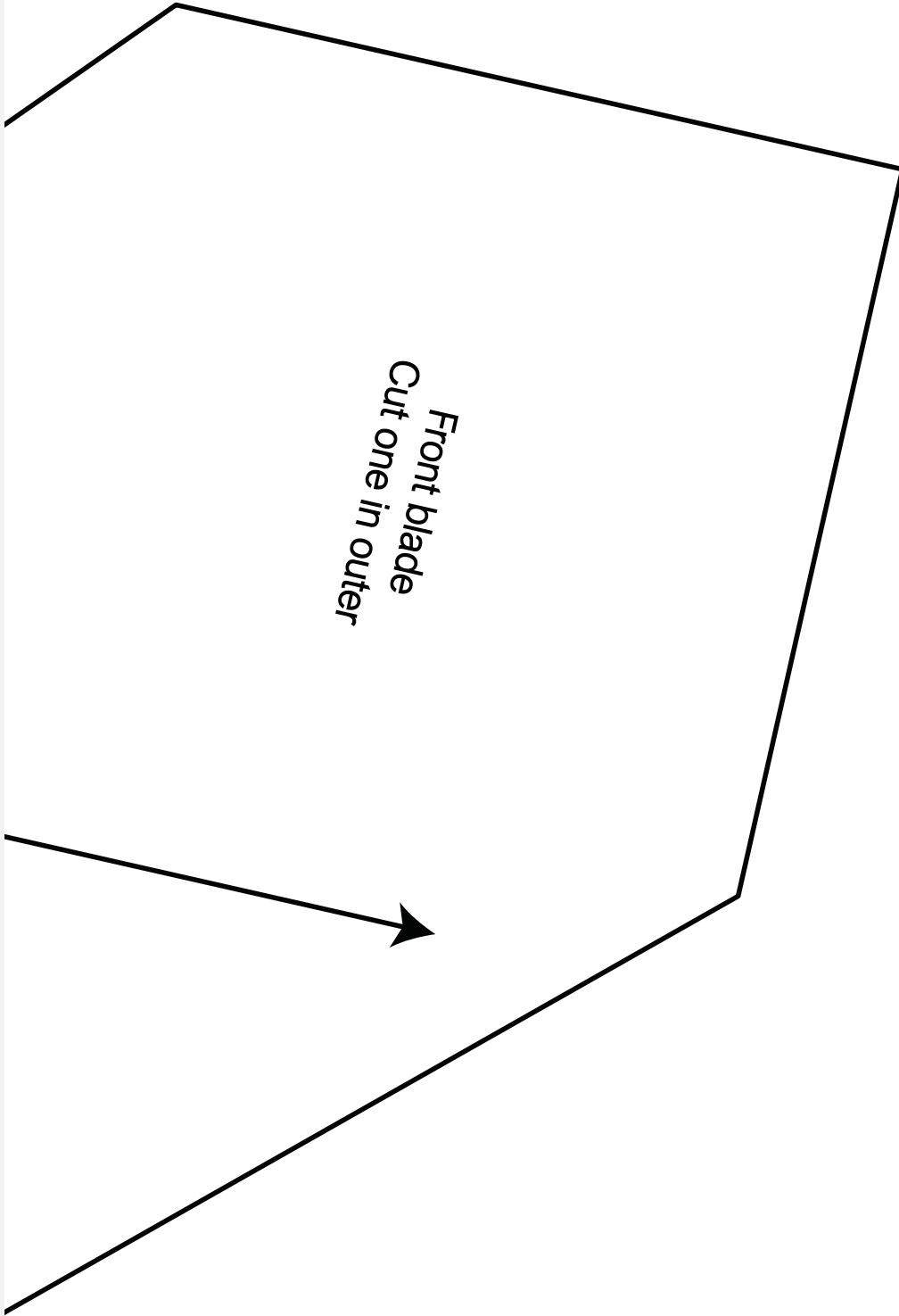


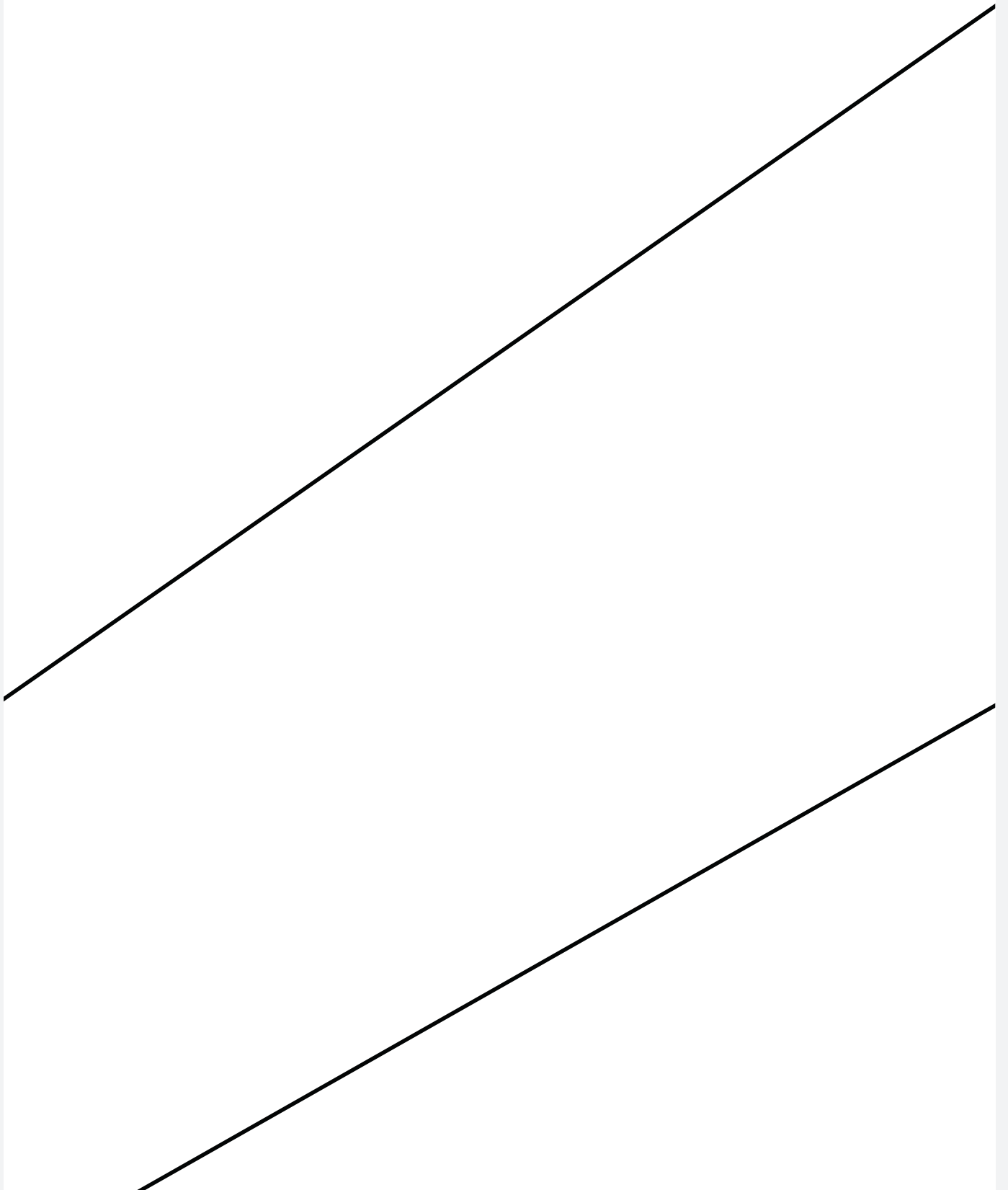


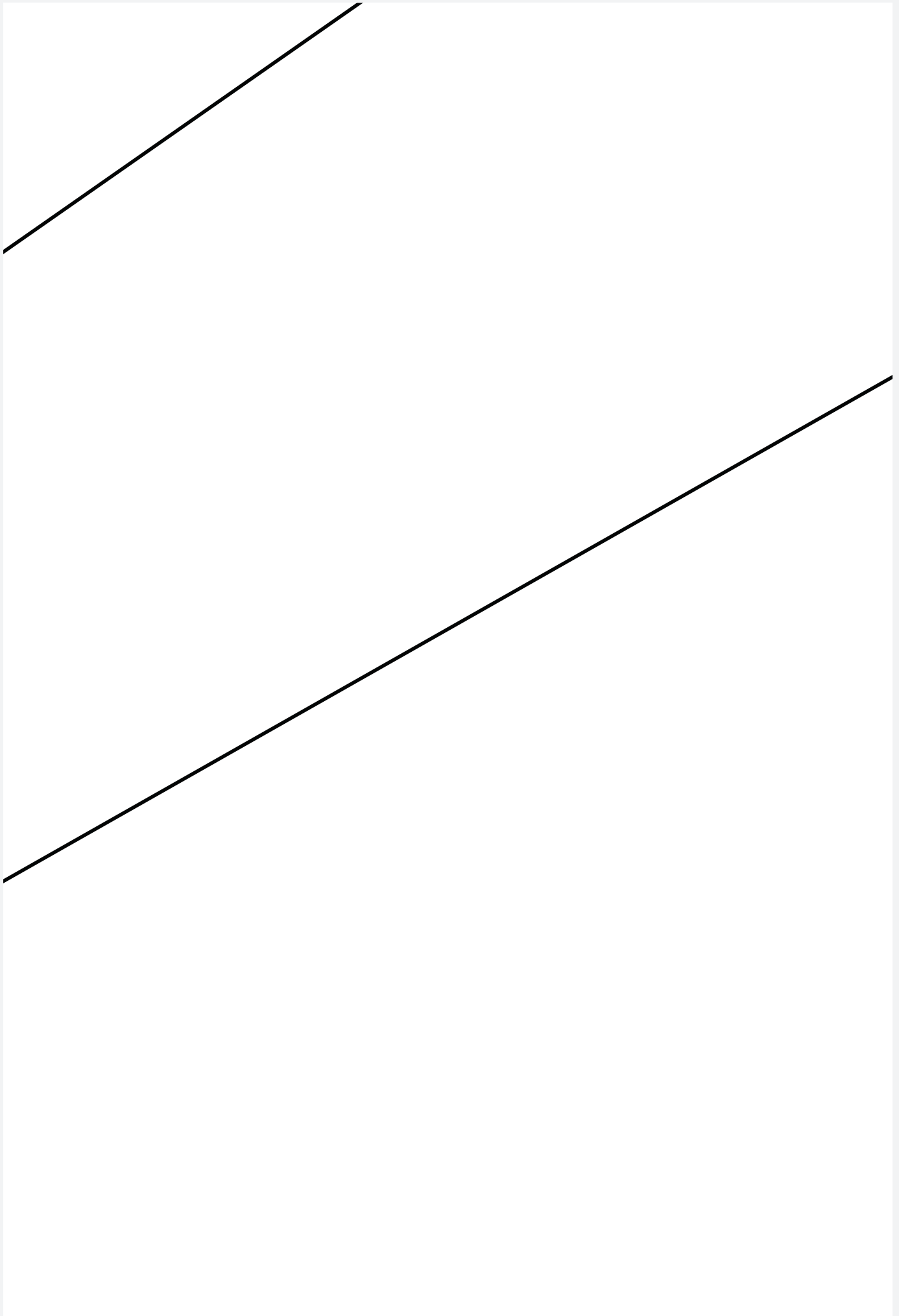
WWW.GATHERED.HOW/SIMPLYSEWING

© Printed in the UK for *Simply Sewing*. Design by Emery Smith. Supplied by Our Media Ltd (an Immediate Group Company), Bristol, BS1 4ST. To be used for individual, private home use only. Not for commercial or manufacturing purposes. Not for resale.









ment of the keeper



