

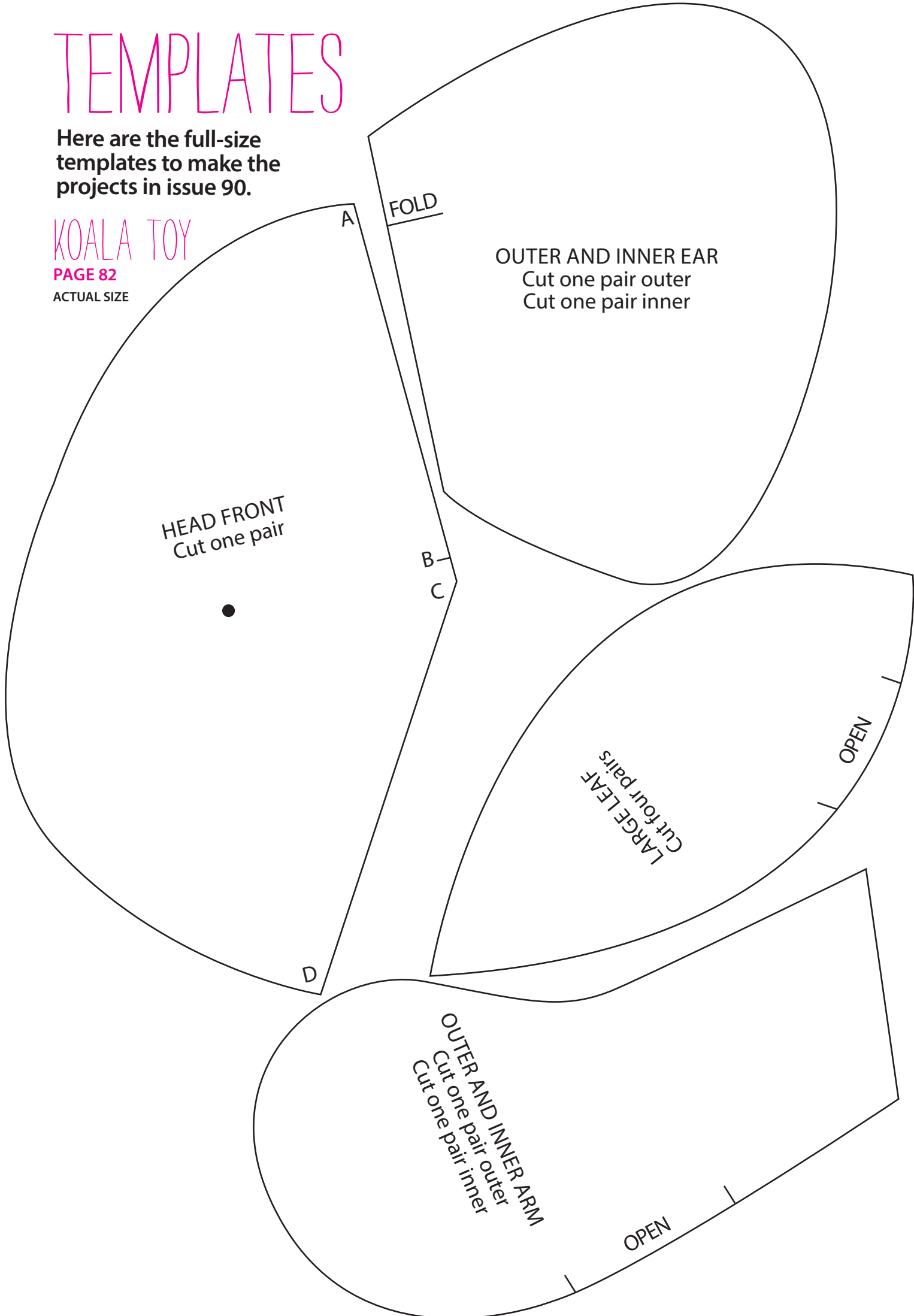
TEMPLATES

Here are the full-size templates to make the projects in issue 90.

KOALA TOY

PAGE 82

ACTUAL SIZE



HEAD FRONT
Cut one pair

FOLD

OUTER AND INNER EAR
Cut one pair outer
Cut one pair inner

A
B
C
D

LARGE LEAF
Cut four pairs

OPEN

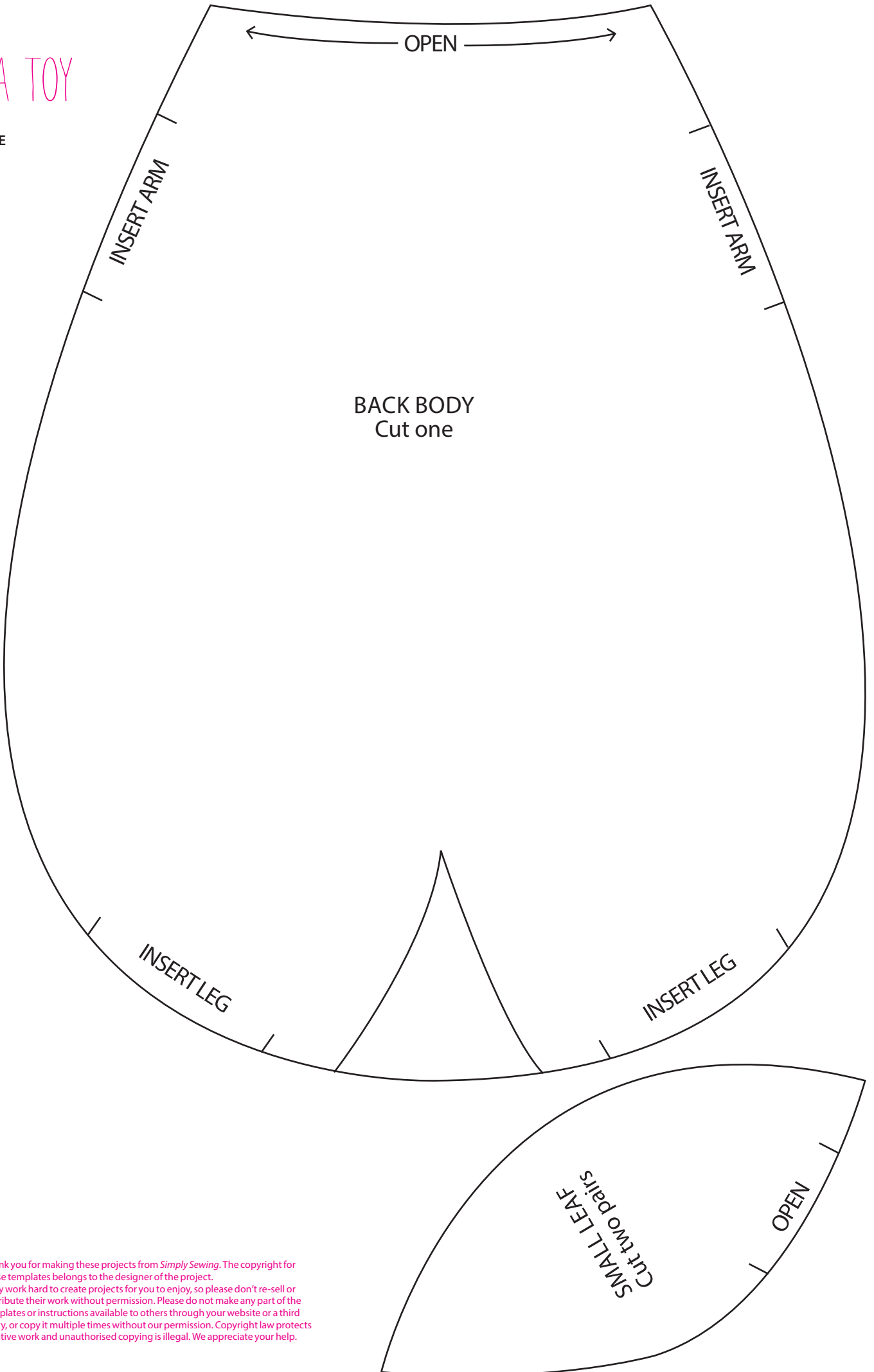
OUTER AND INNER ARM
Cut one pair outer
Cut one pair inner

OPEN

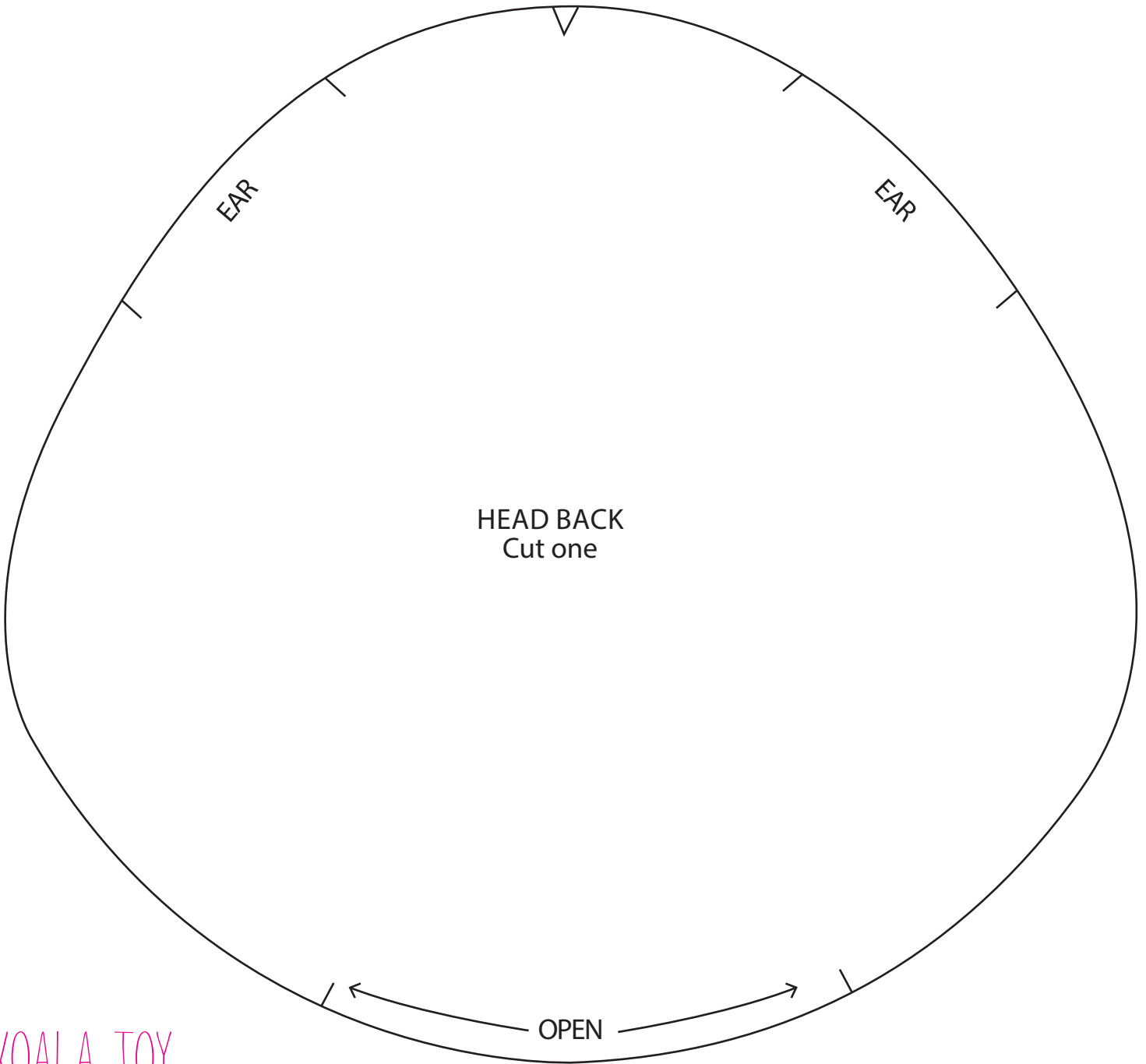
KOALA TOY

PAGE 82

ACTUAL SIZE



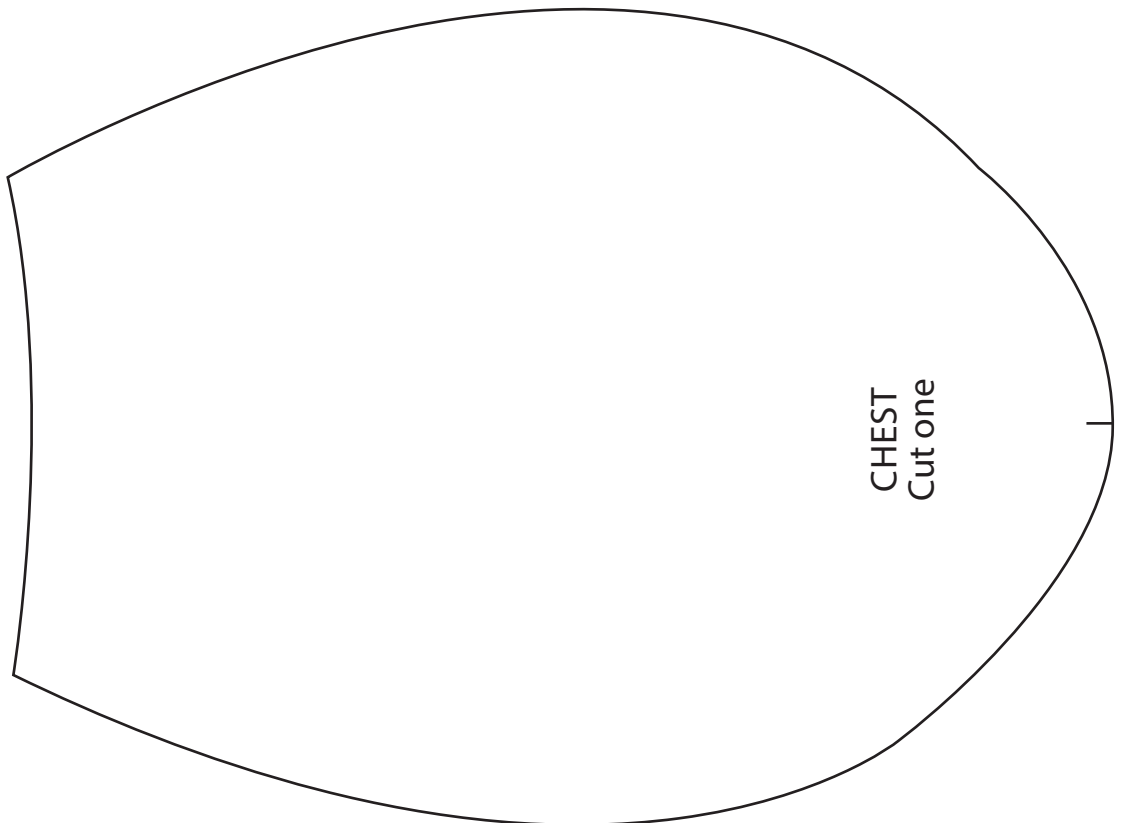
Thank you for making these projects from *Simply Sewing*. The copyright for these templates belongs to the designer of the project. They work hard to create projects for you to enjoy, so please don't re-sell or distribute their work without permission. Please do not make any part of the templates or instructions available to others through your website or a third party, or copy it multiple times without our permission. Copyright law protects creative work and unauthorised copying is illegal. We appreciate your help.

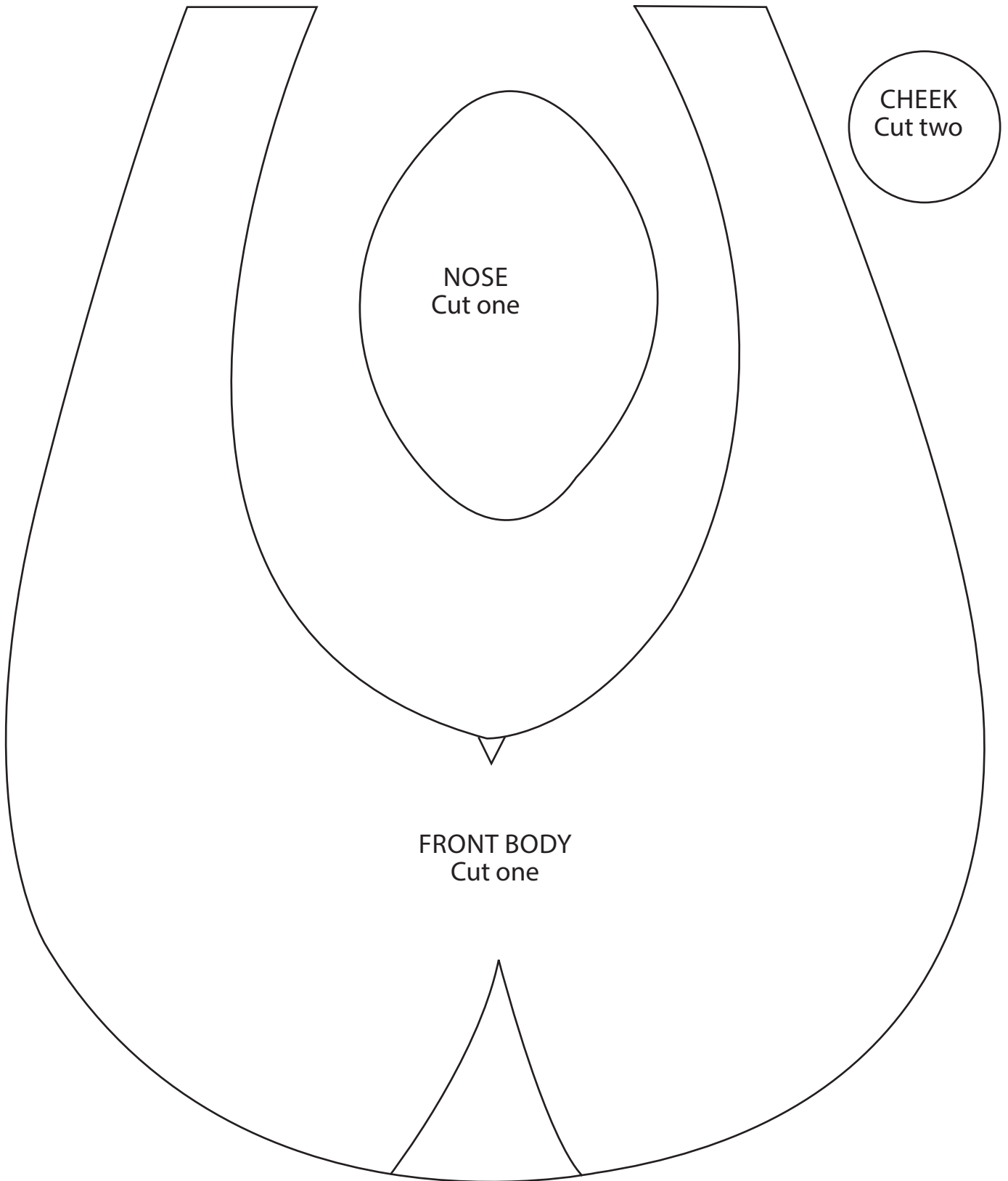


KOALA TOY

PAGE 82

ACTUAL SIZE

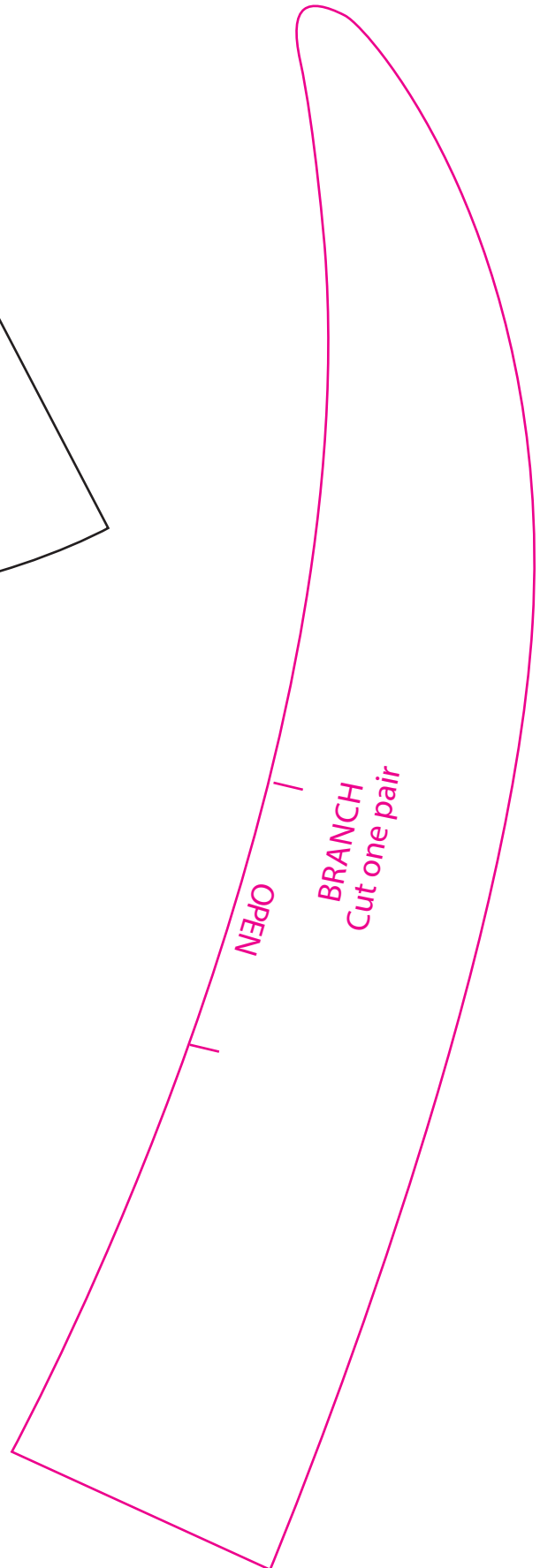
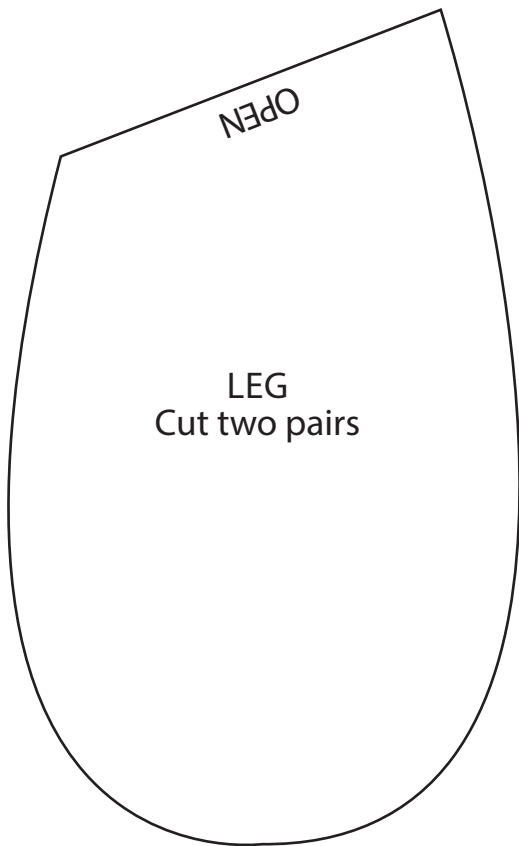
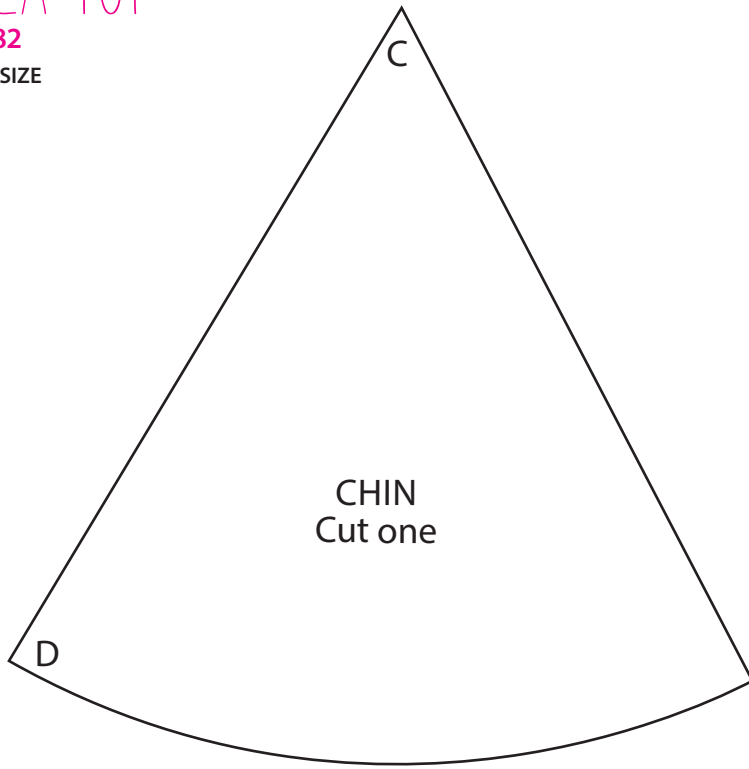




KOALA TOY

PAGE 82

ACTUAL SIZE



BANNER

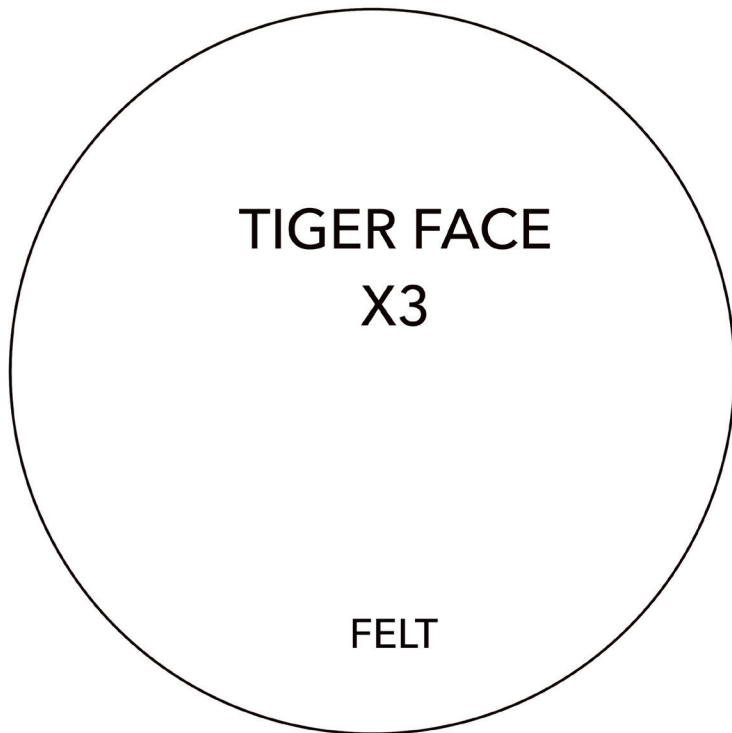
X 1

Canvas

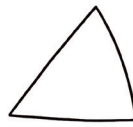
1.5 cm seam
Allowance



FELT BOW TIE
CENTER X1



CHEEK X2
Leatherette

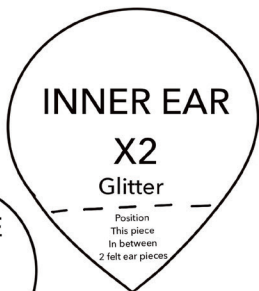


STRIPES X4
Glitter



STRIPES X2
Glitter

NOSE X1
Leatherette



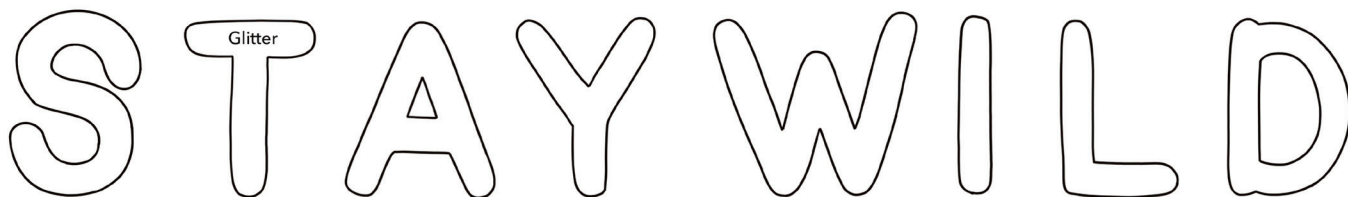
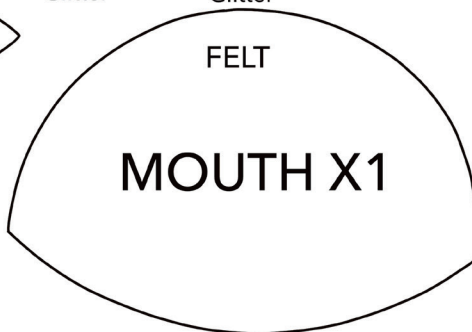
Position
This piece
in between
2 felt ear pieces



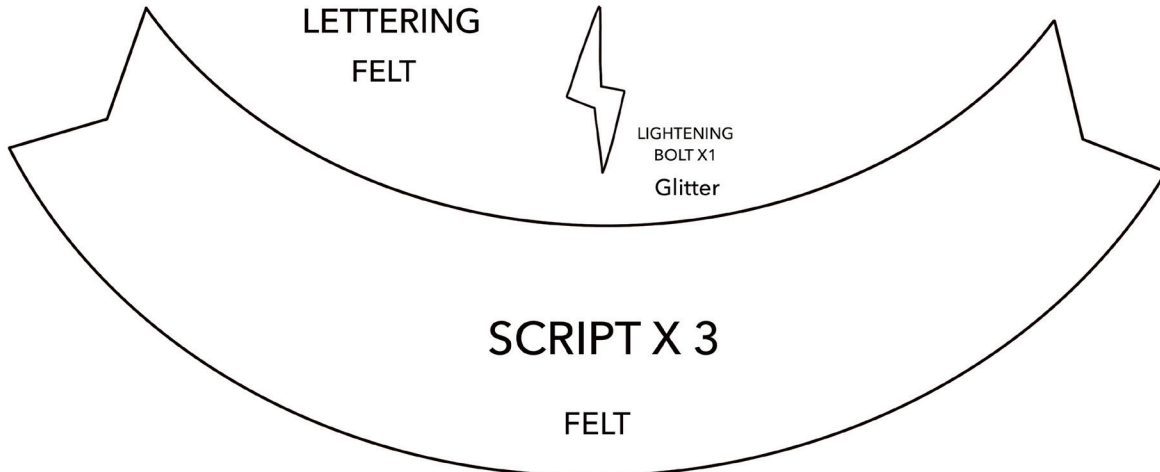
EYE X2
Leatherette



EYE X2
Leatherette



LIGHTNING
BOLT X1
Glitter





LAVENDER
SACHETS

PAGE 40
ACTUAL SIZE

LAUNDRY BAG

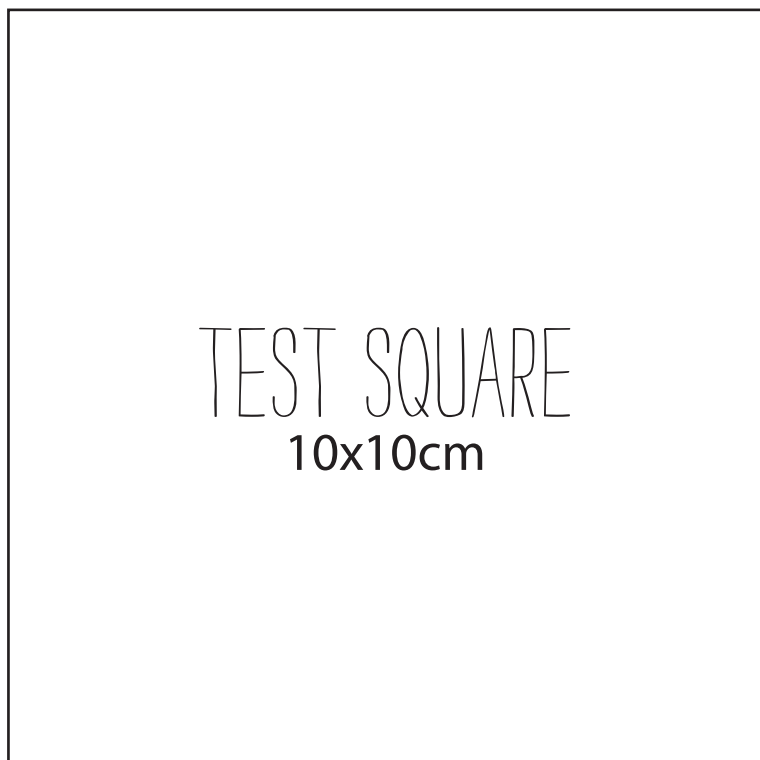
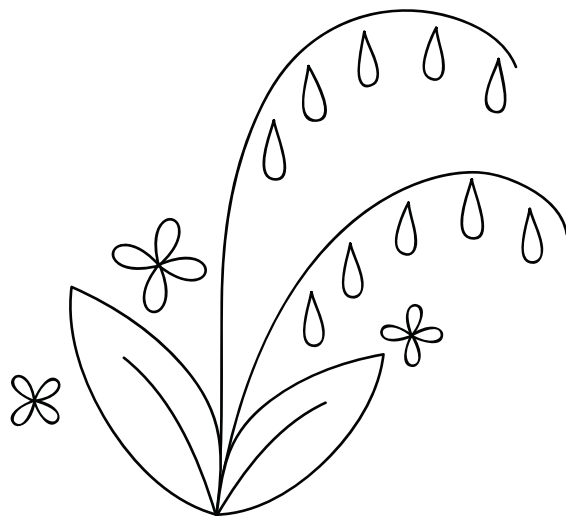
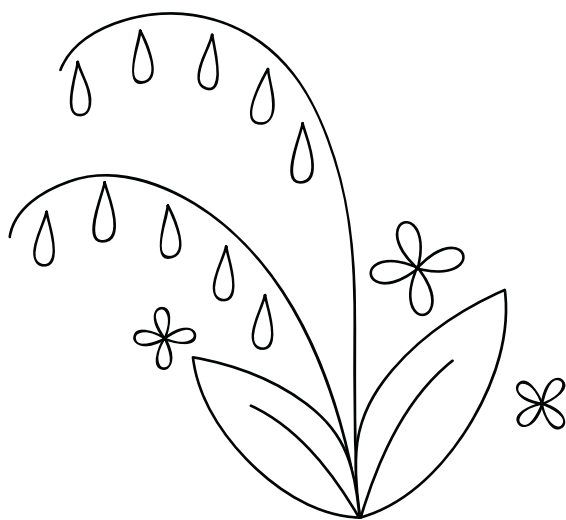
PAGE 39
ACTUAL SIZE

**Good
Gymnastics**

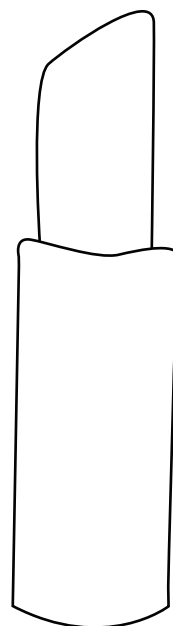
HAT AND
MITTENS

PAGE 87

ACTUAL SIZE



TEST SQUARE
10x10cm



ZIP POUCH

PAGE 68

ACTUAL SIZE