

TEMPLATES

Here are the full-size templates to make the dinosaur toy in issue 91.

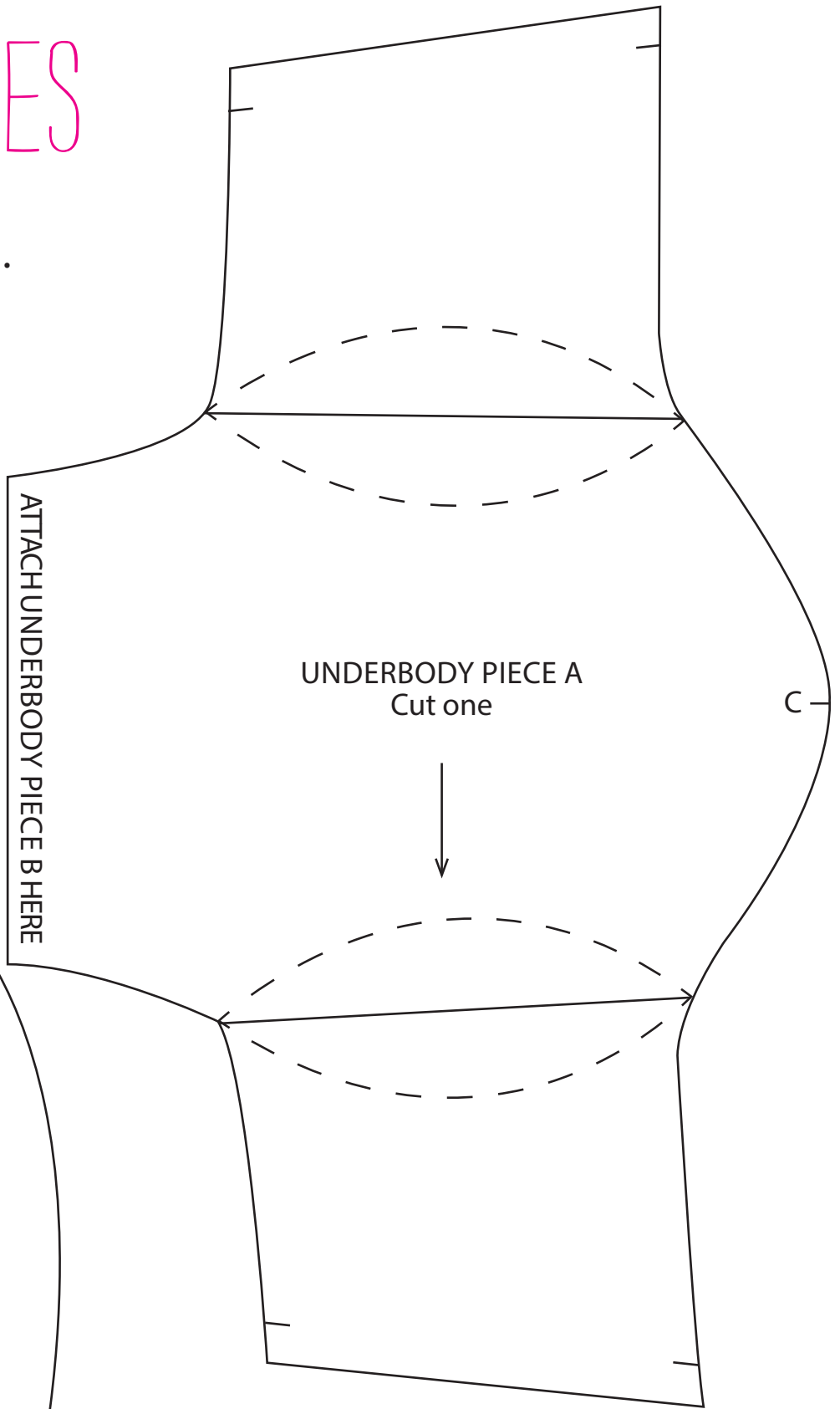
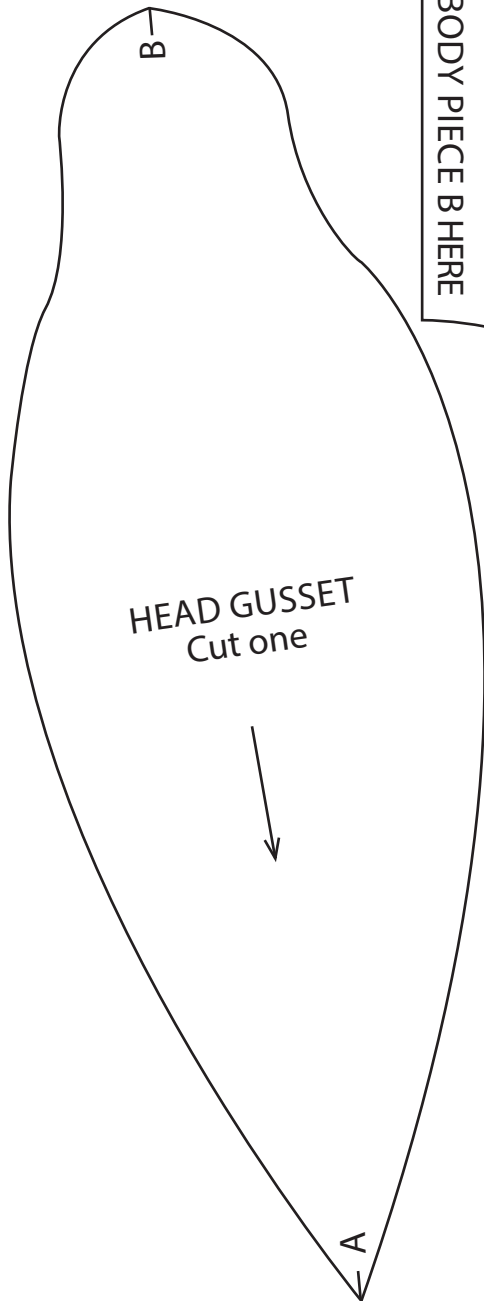
DINOSAUR TOY

PAGE 82

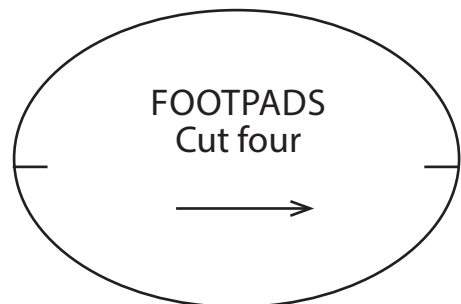
ACTUAL SIZE

SMALL SPOT
Cut four

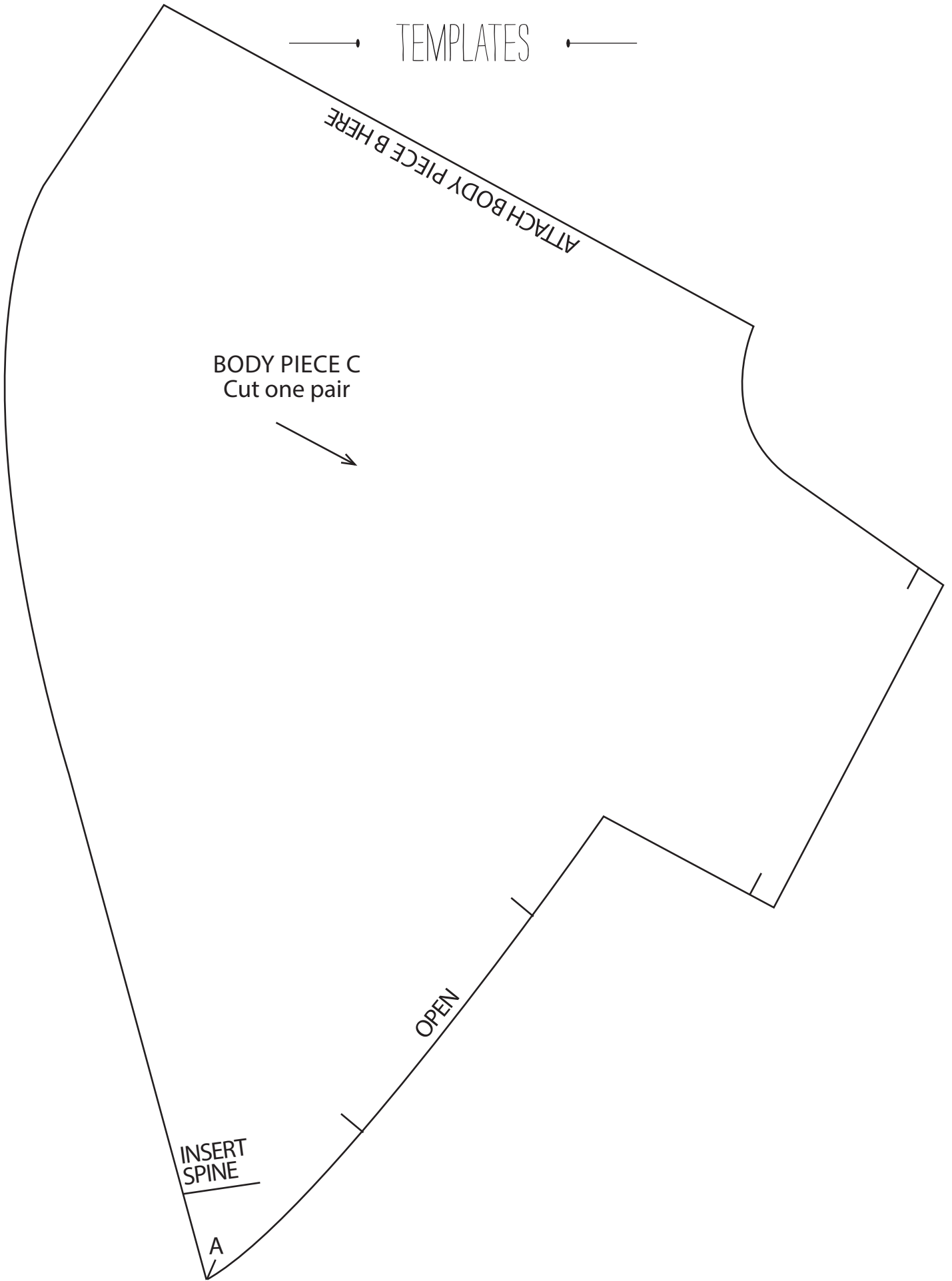
EYE
Cut two



LARGE SPOT
Cut two



TEMPLATES



DINOSAUR TOY

PAGE 82

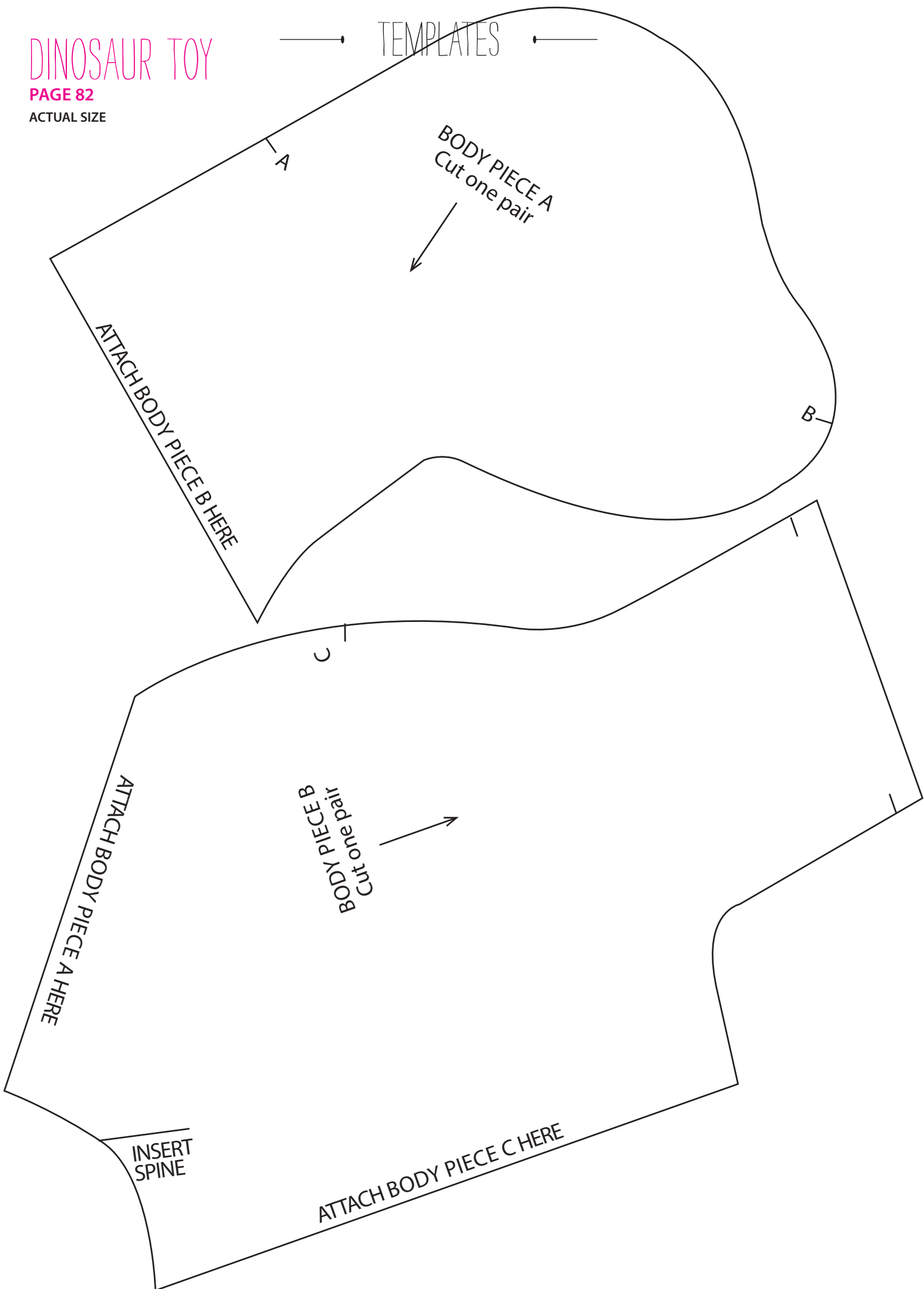
ACTUAL SIZE

DINOSAUR TOY

PAGE 82

ACTUAL SIZE

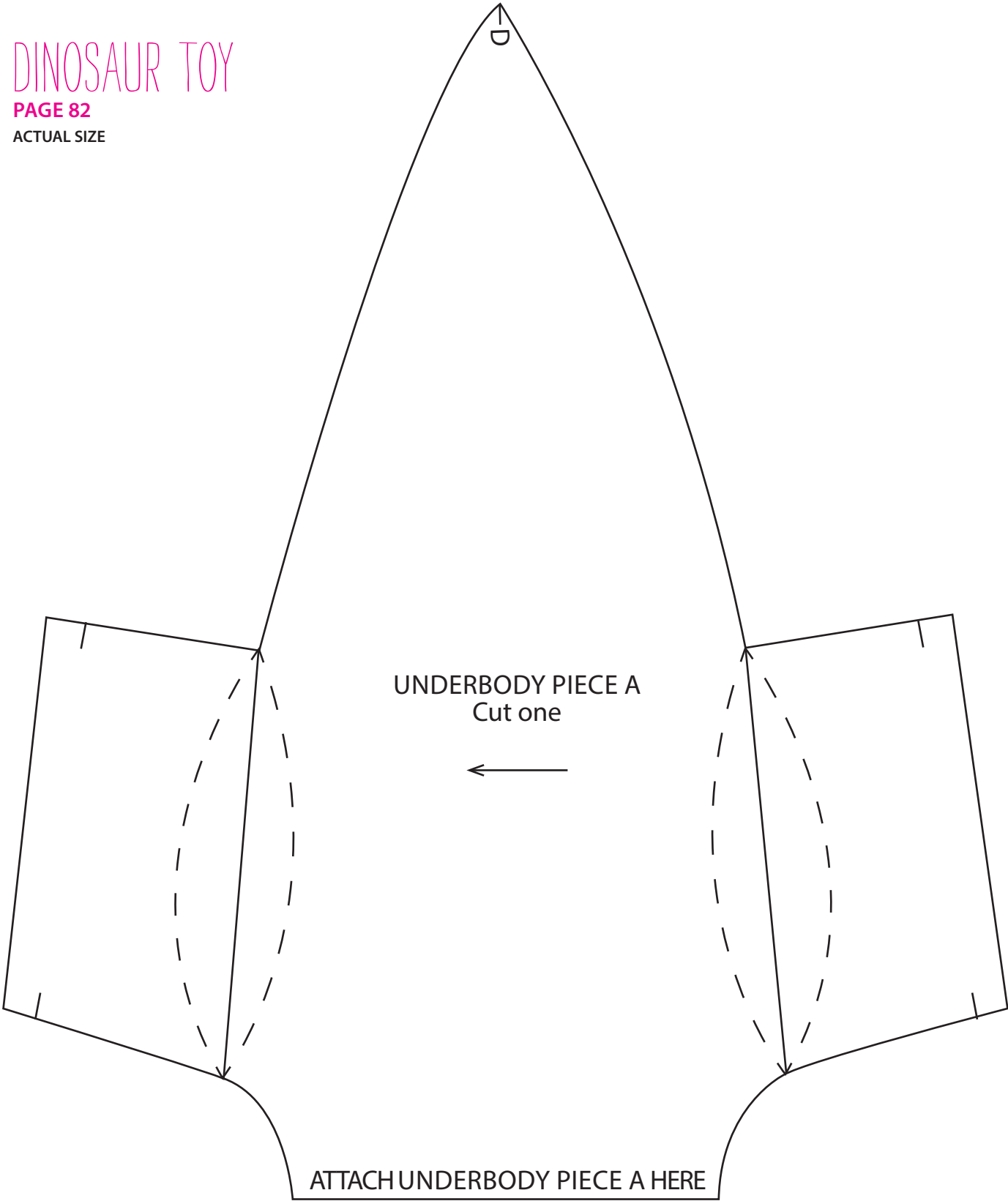
TEMPLATES



DINOSAUR TOY

PAGE 82

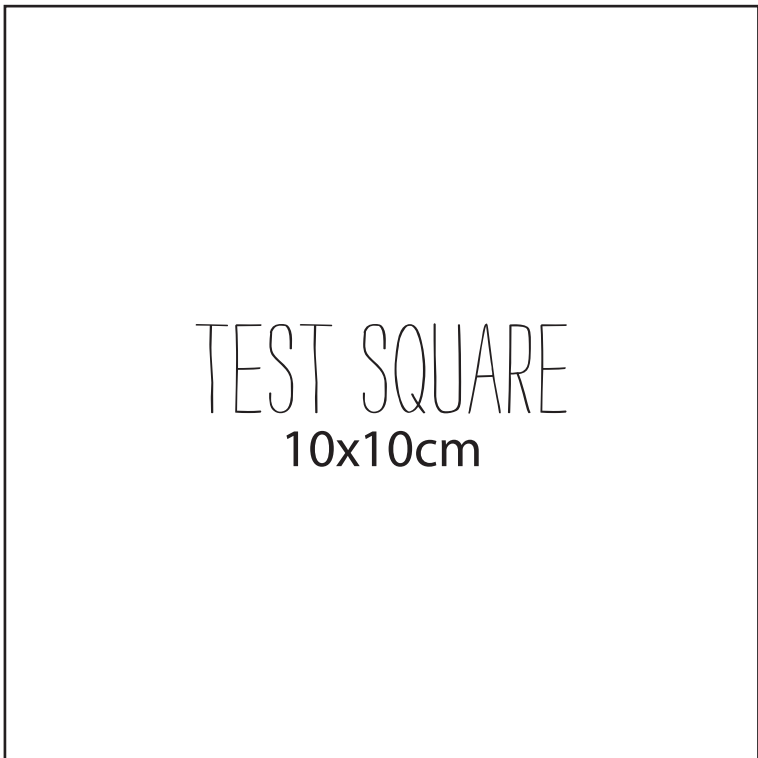
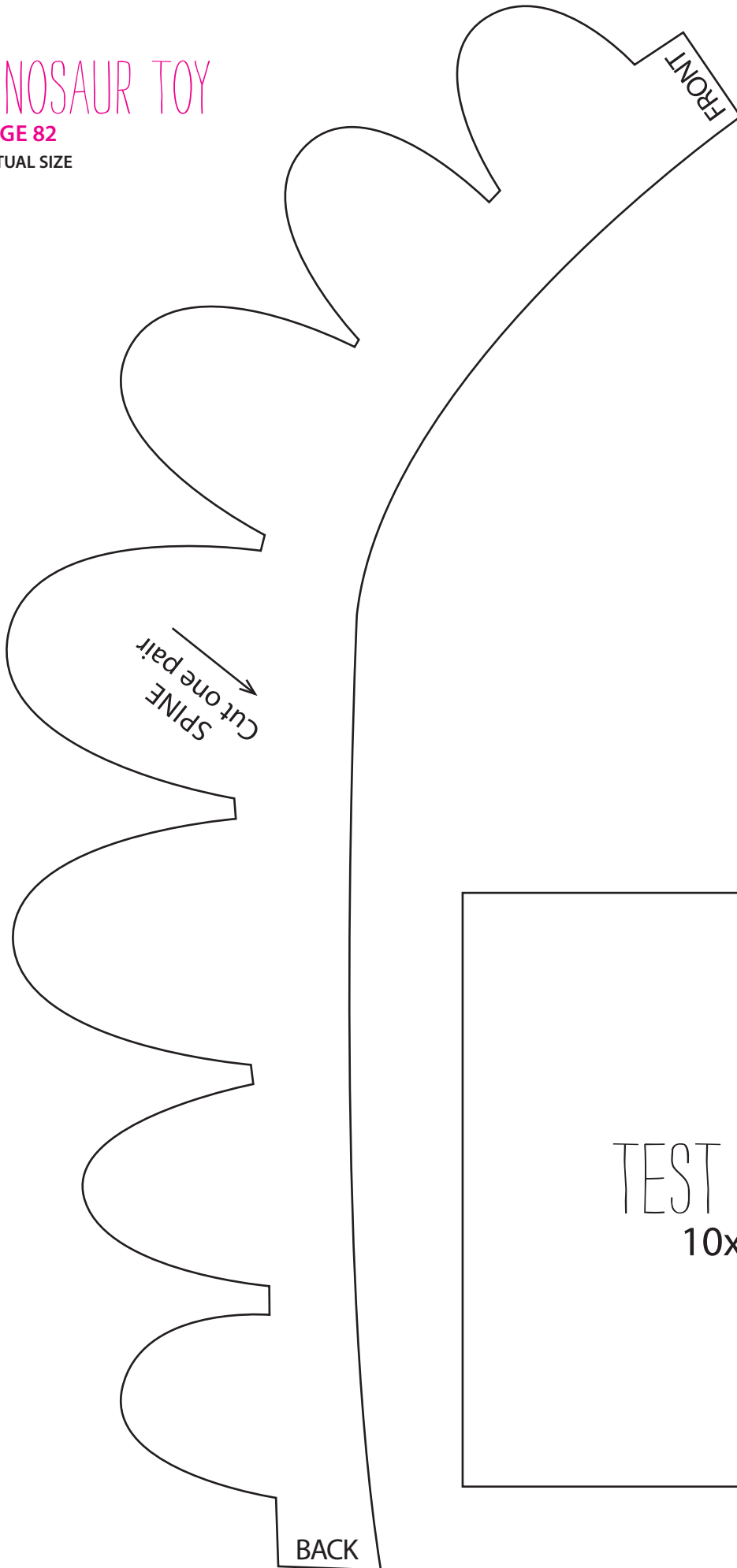
ACTUAL SIZE



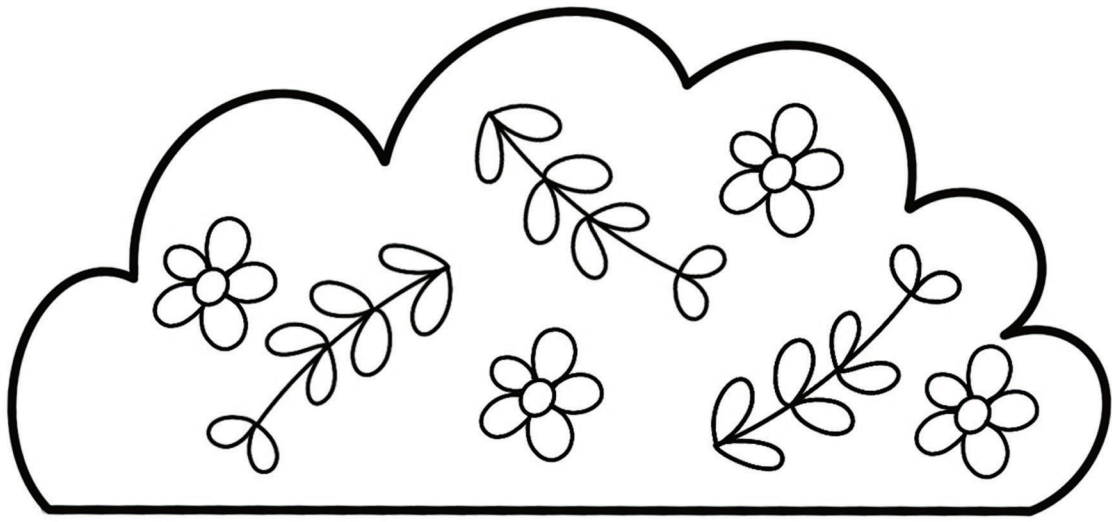
Thank you for making these projects from *Simply Sewing*. The copyright for these templates belongs to the designer of the project. They work hard to create projects for you to enjoy, so please don't re-sell or distribute their work without permission. Please do not make any part of the templates or instructions available to others through your website or a third party, or copy it multiple times without our permission. Copyright law protects creative work and unauthorised copying is illegal. We appreciate your help.

DINOSAUR TOY

PAGE 82
ACTUAL SIZE



Cut 2



Cloud 1

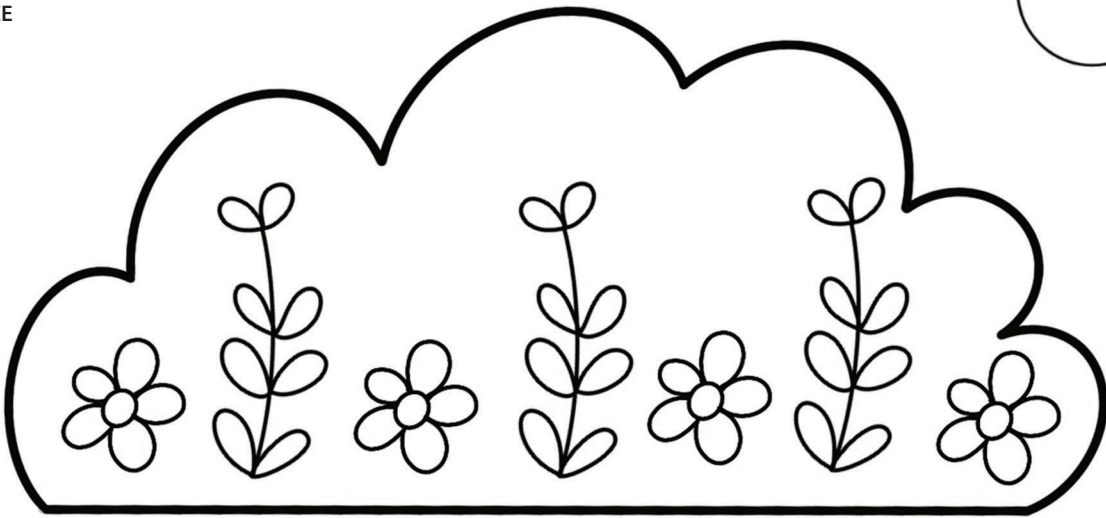
CLOUD DECORATION

PAGE 79
ACTUAL SIZE



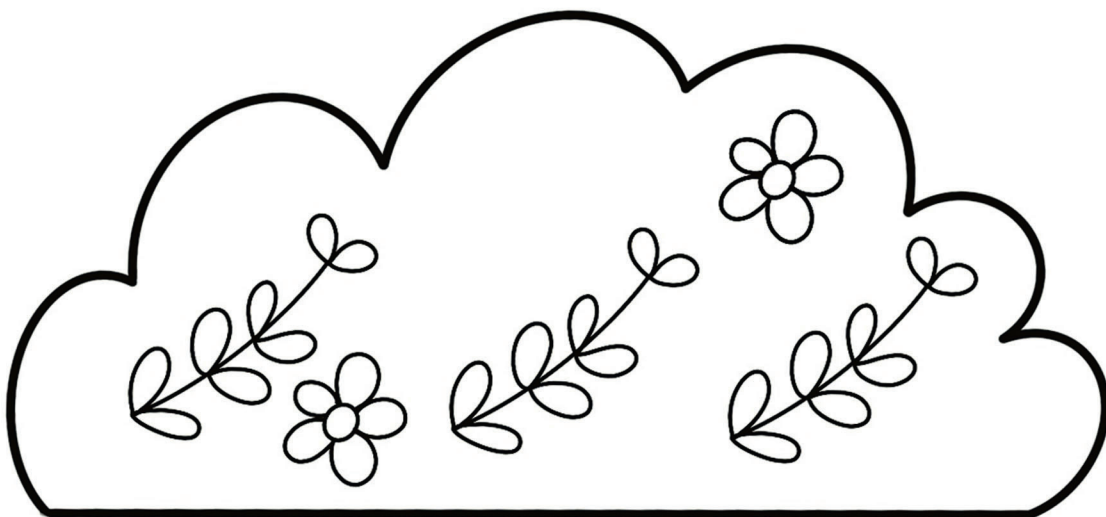
Cut 10

Cut 2

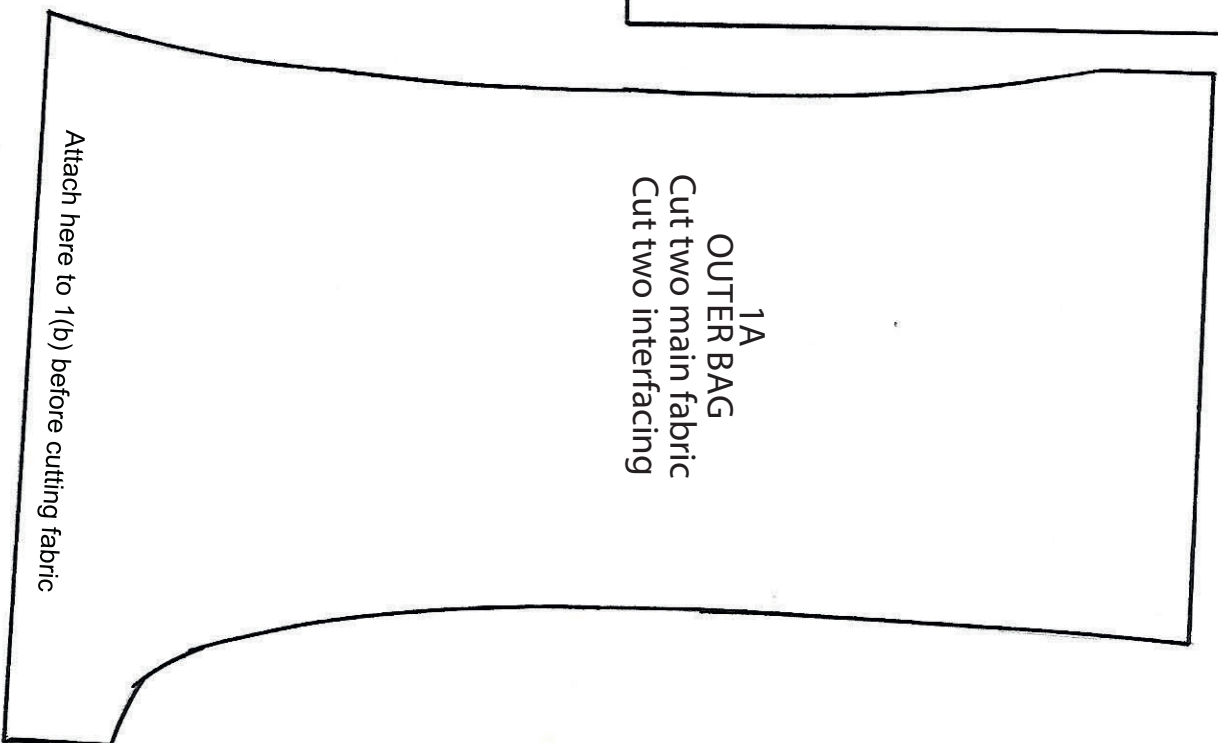
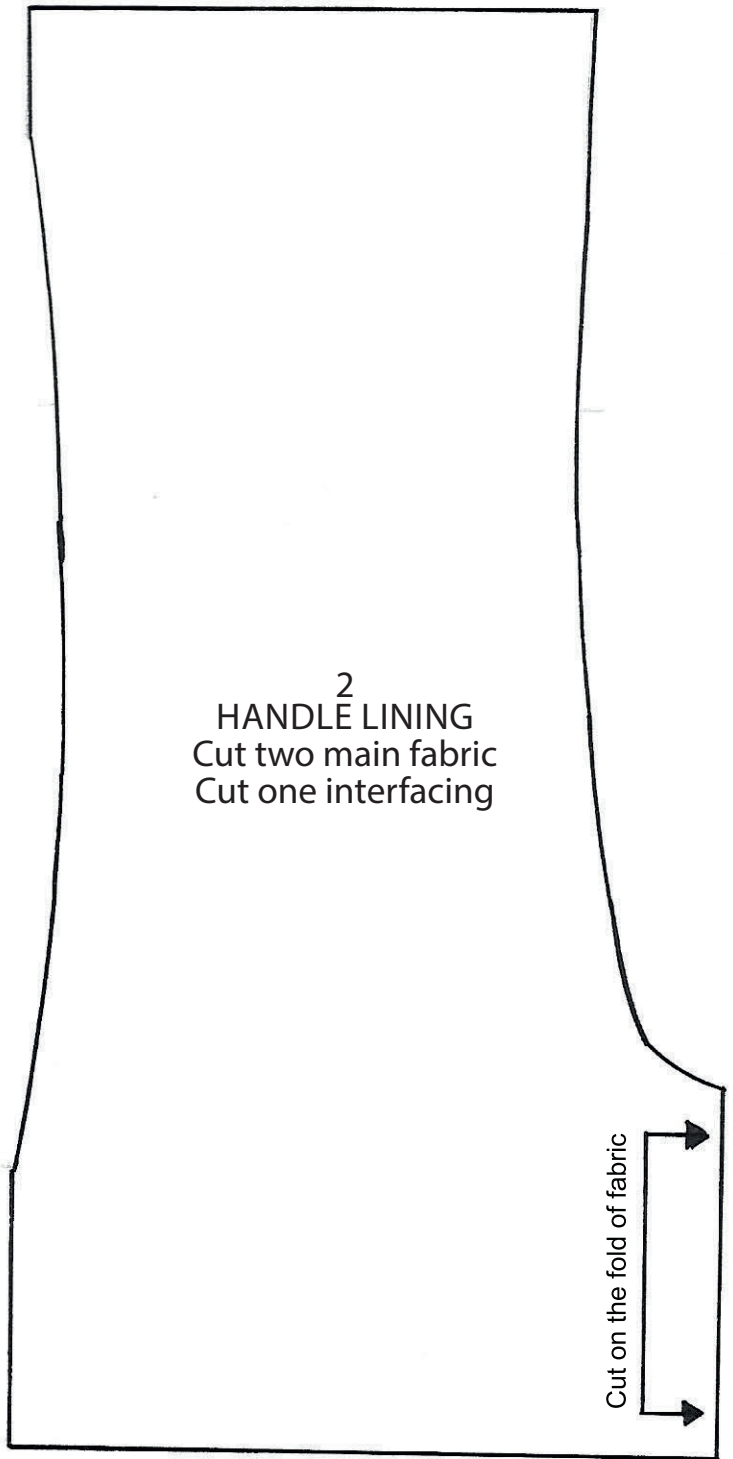
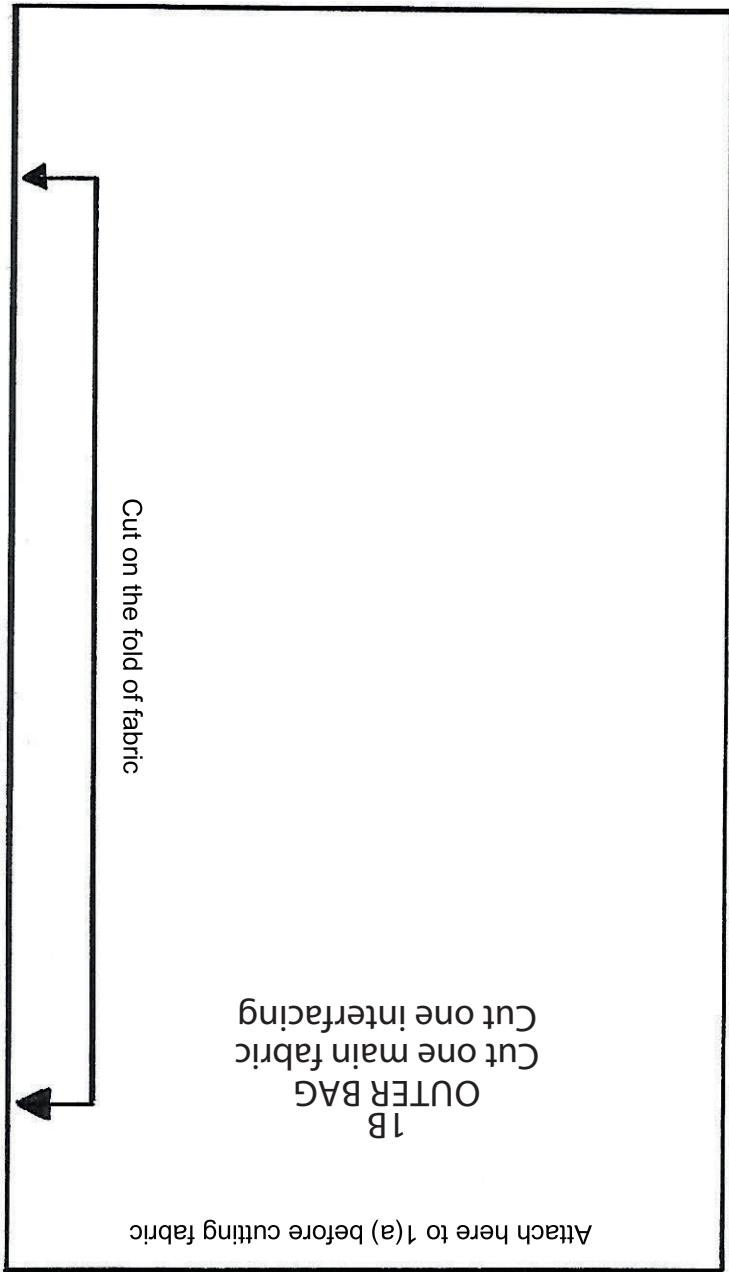


Cloud 2

Cut 2



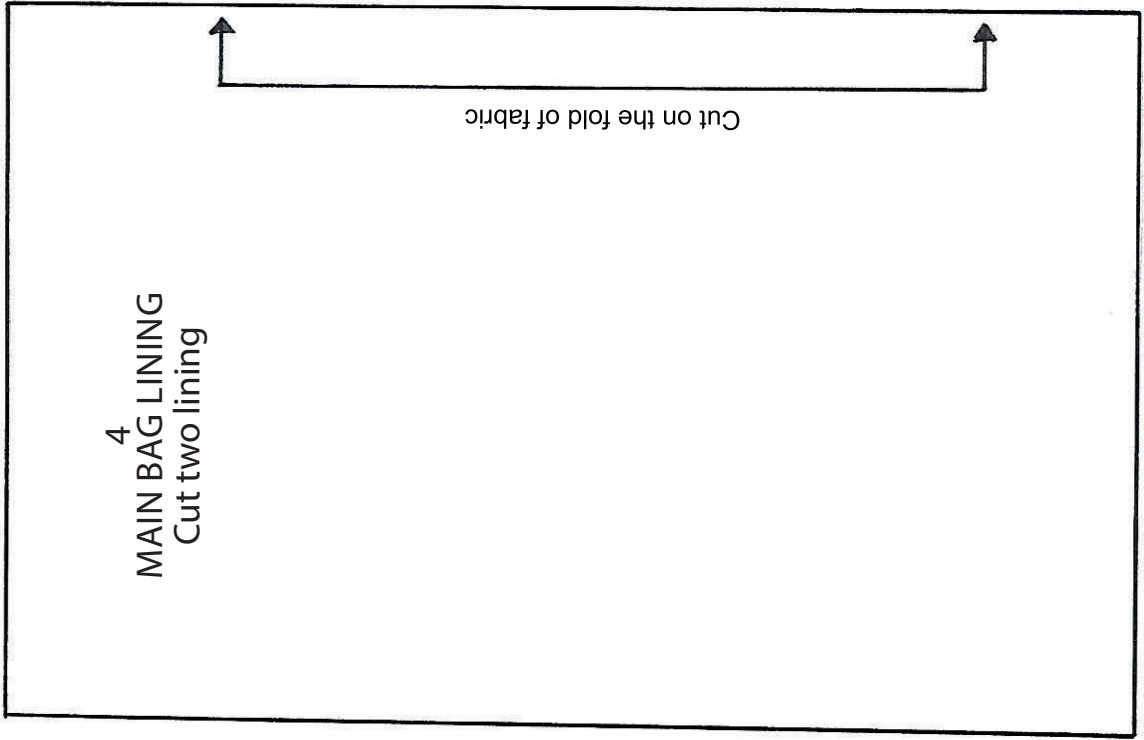
Cloud 3



BEADED BAG

PAGE 61

ACTUAL SIZE



BEADED BAG

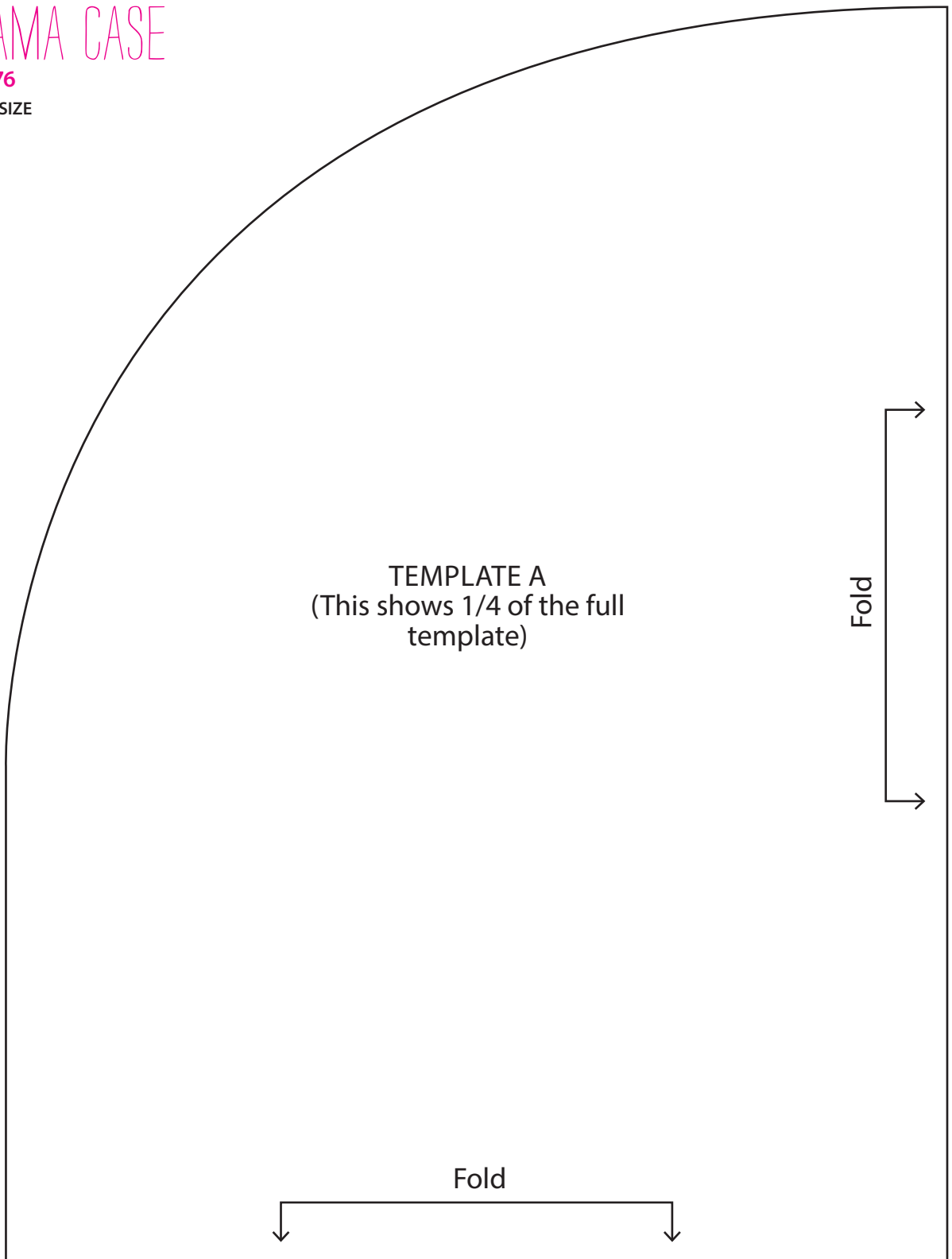
PAGE 61

ACTUAL SIZE

PYJAMA CASE

PAGE 76

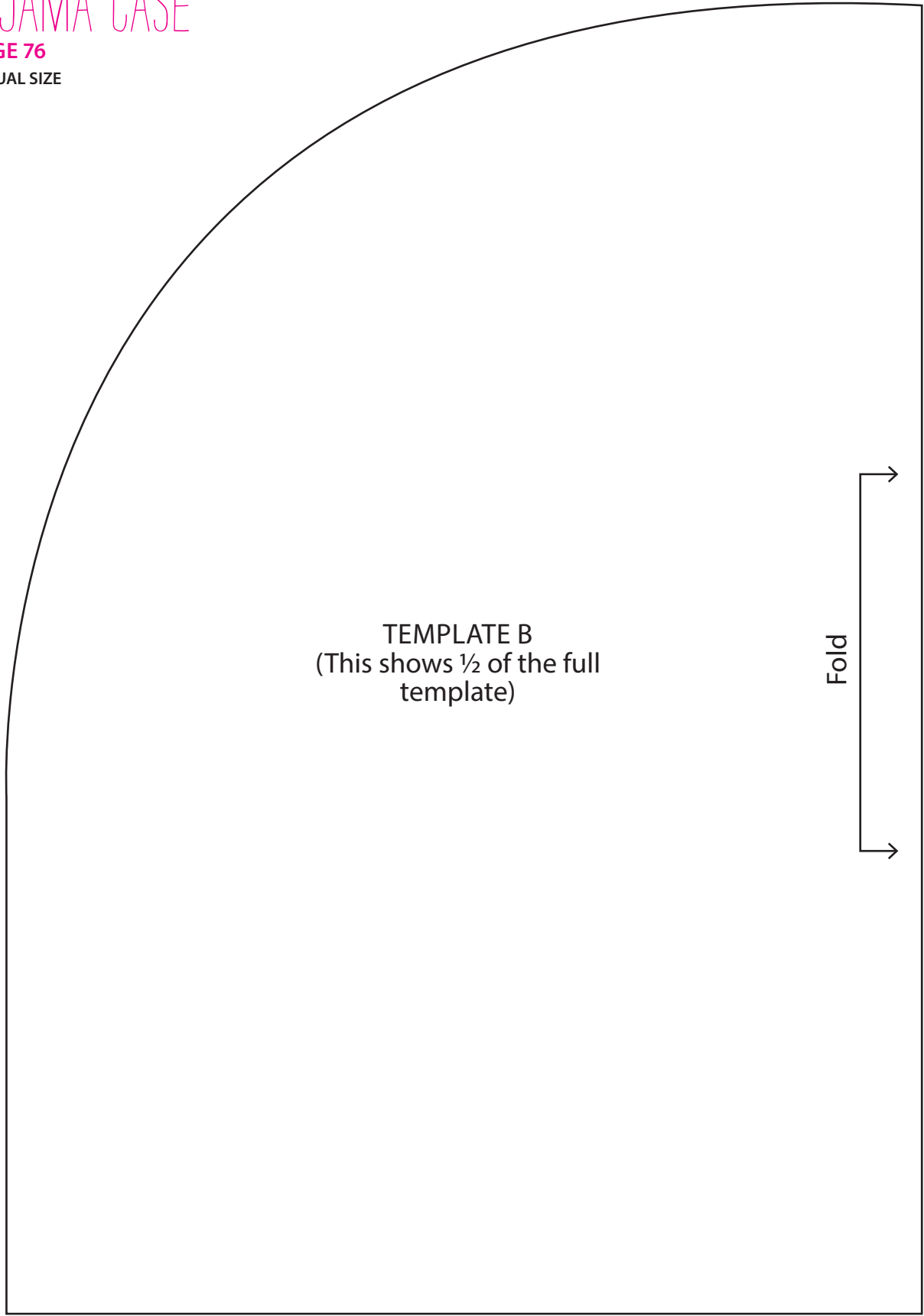
ACTUAL SIZE



PYJAMA CASE

PAGE 76

ACTUAL SIZE



TEMPLATE B
(This shows 1/2 of the full
template)

Fold

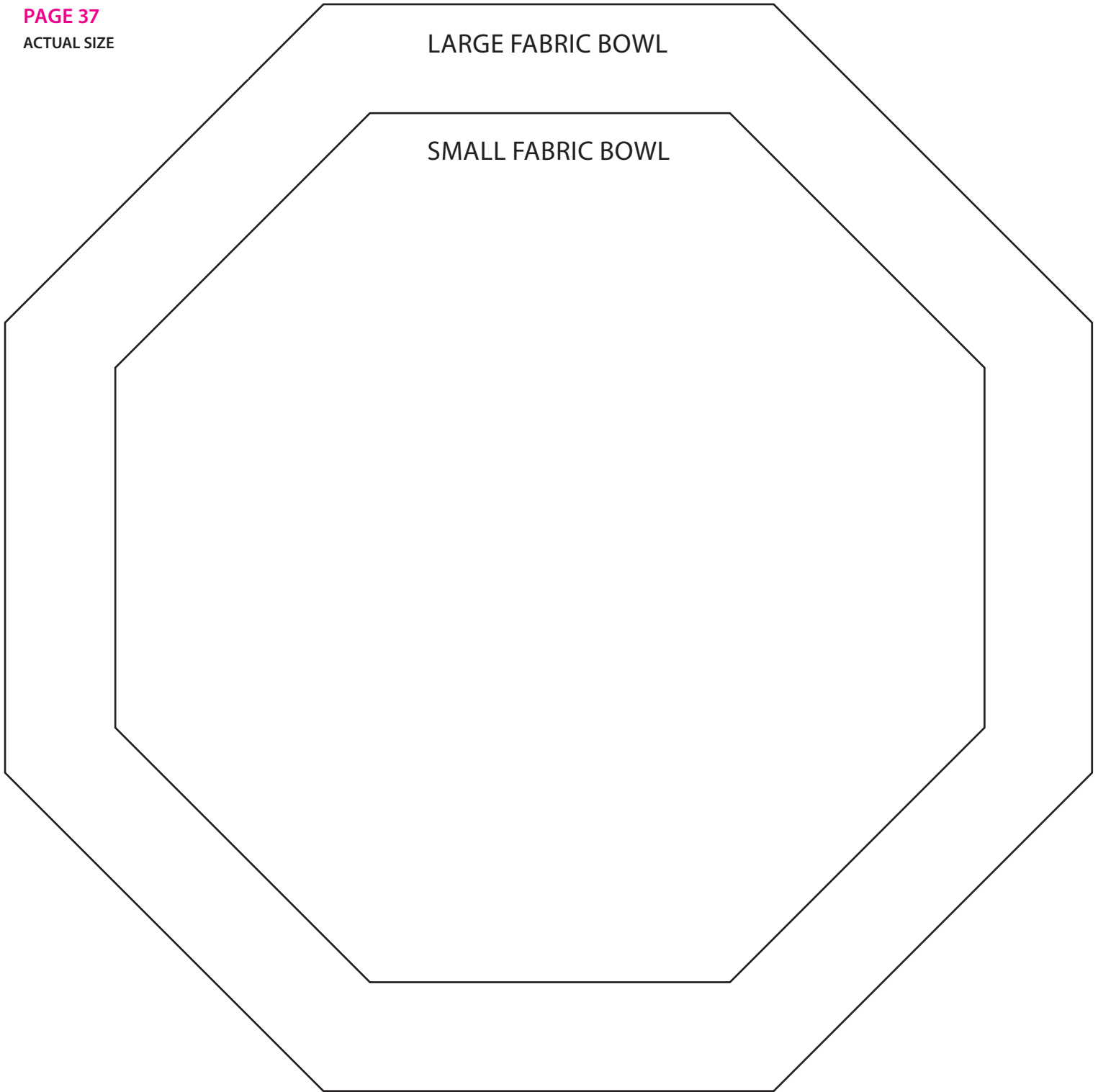
FABRIC BOWL

PAGE 37

ACTUAL SIZE

LARGE FABRIC BOWL

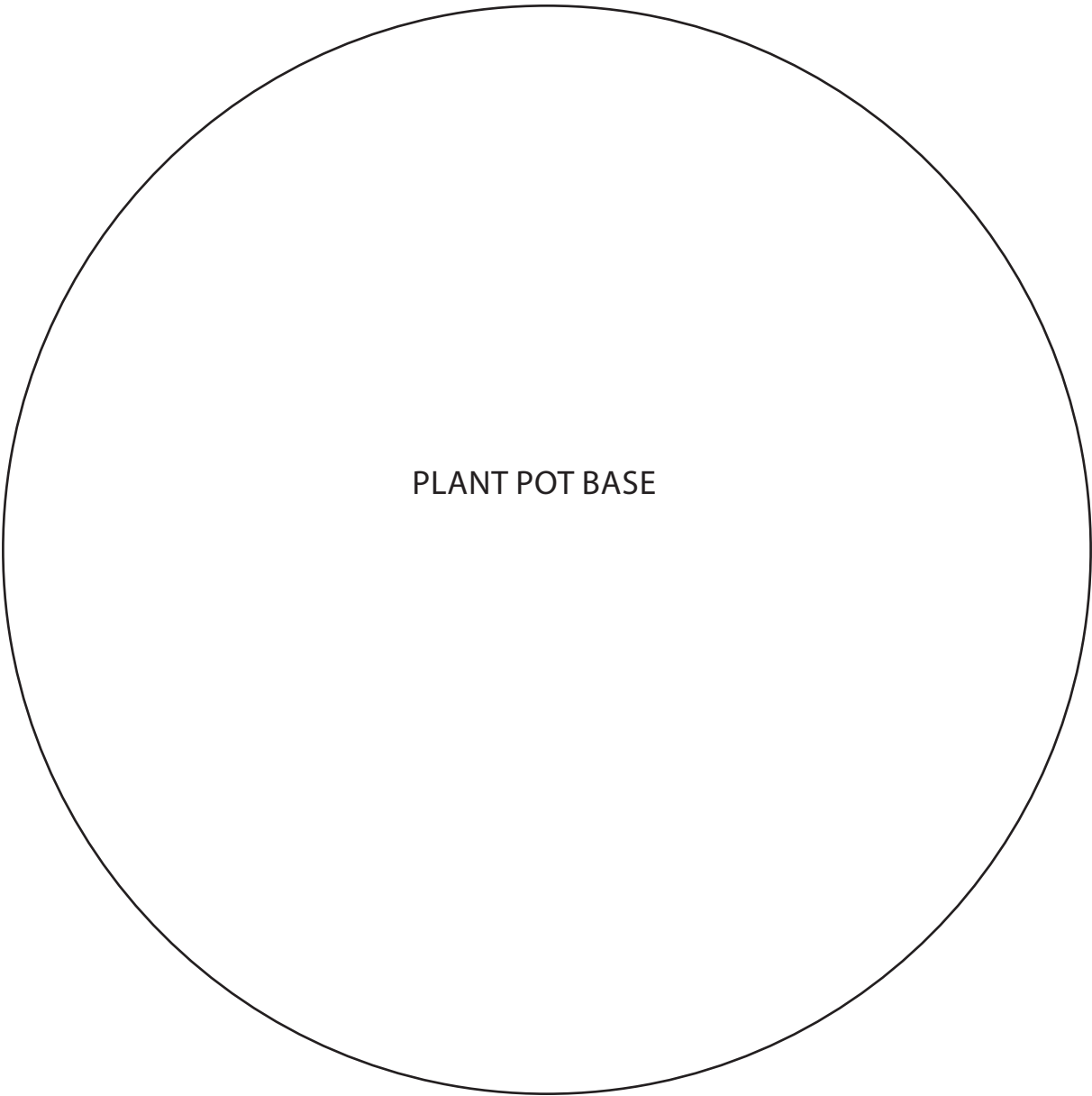
SMALL FABRIC BOWL



PLANT POT

PAGE 39

ACTUAL SIZE

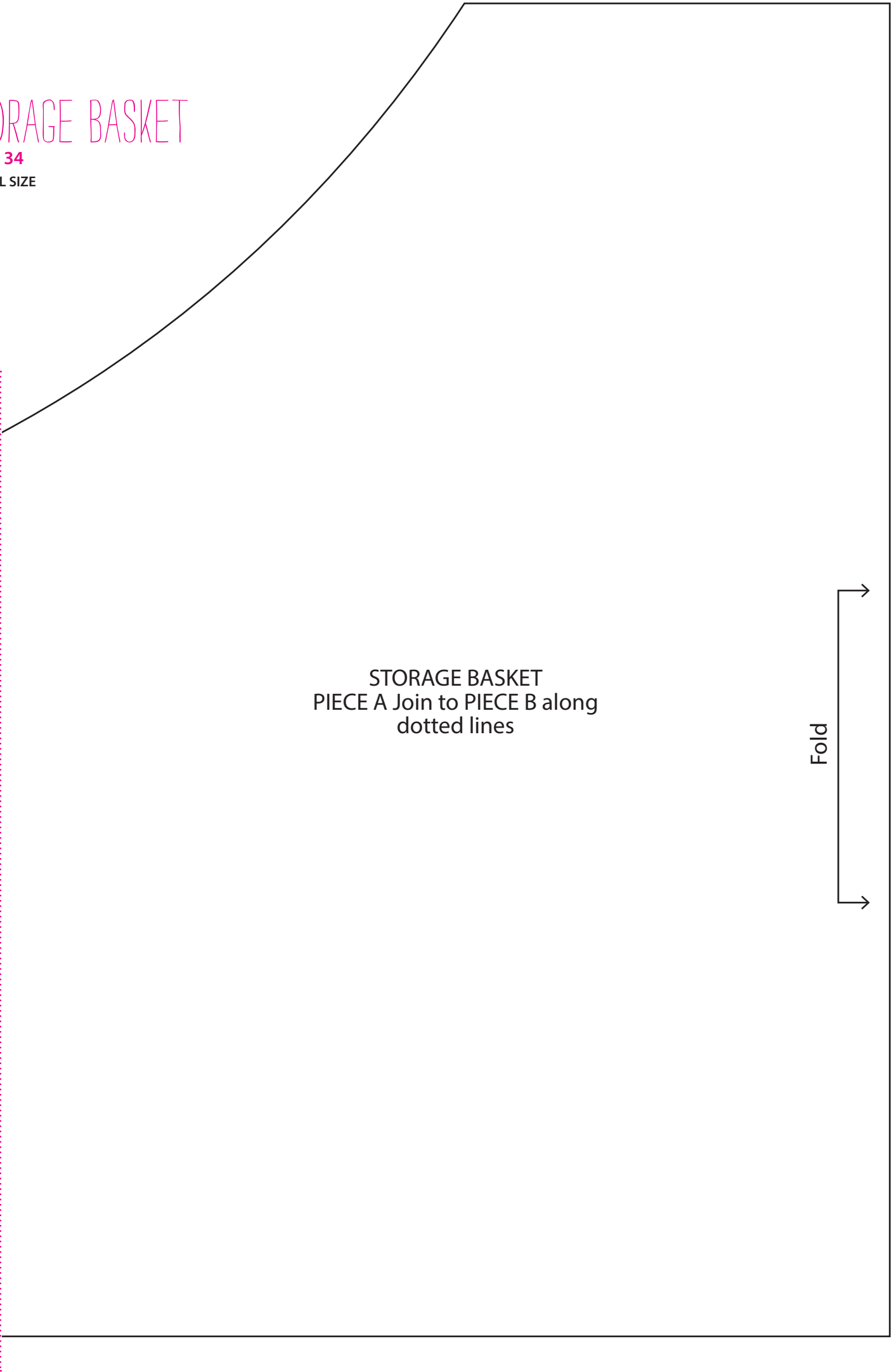


PLANT POT BASE

STORAGE BASKET

PAGE 34

ACTUAL SIZE



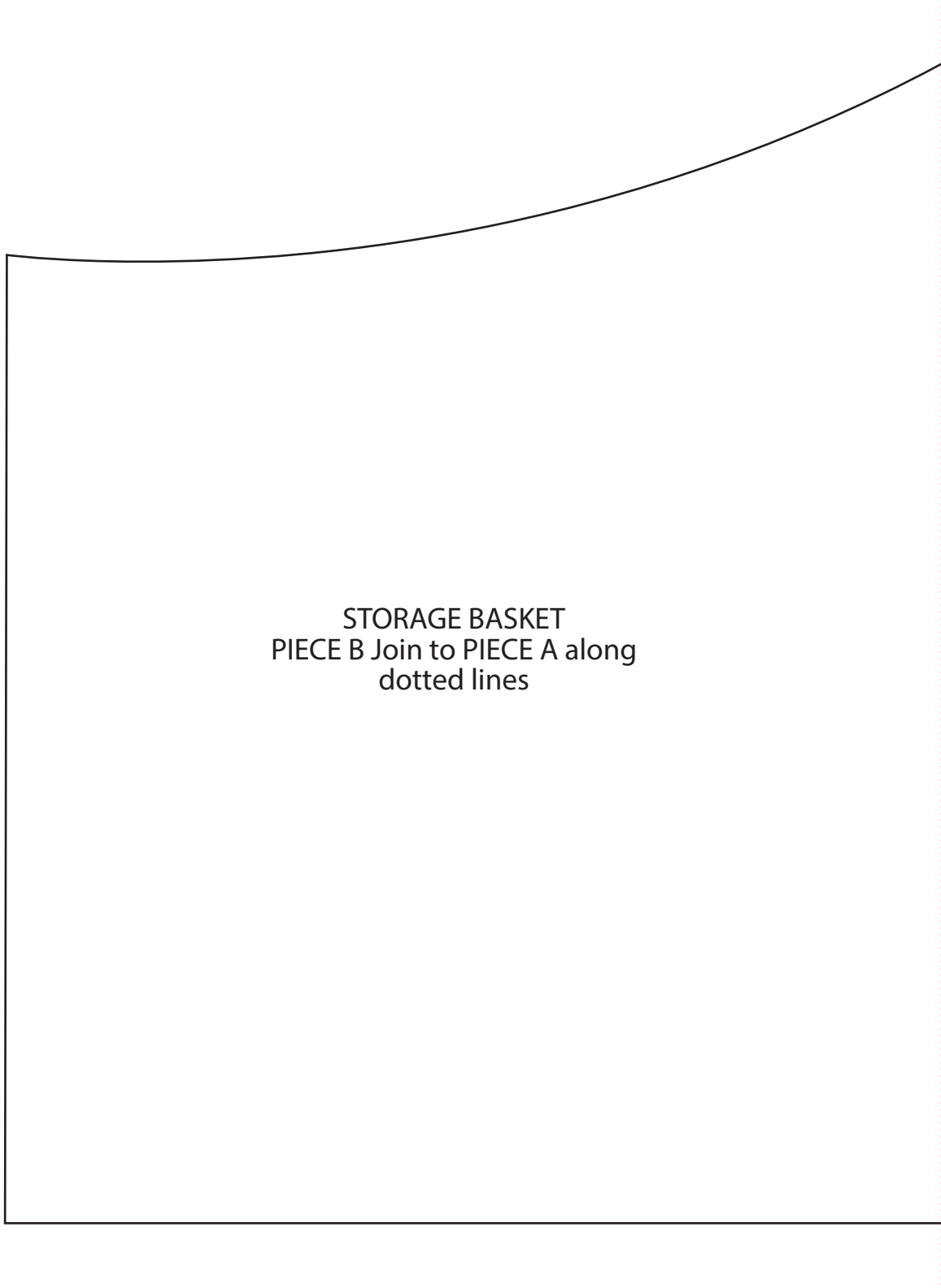
STORAGE BASKET
PIECE A Join to PIECE B along
dotted lines



STORAGE BASKET

PAGE 34

ACTUAL SIZE



STORAGE BASKET
PIECE B Join to PIECE A along
dotted lines