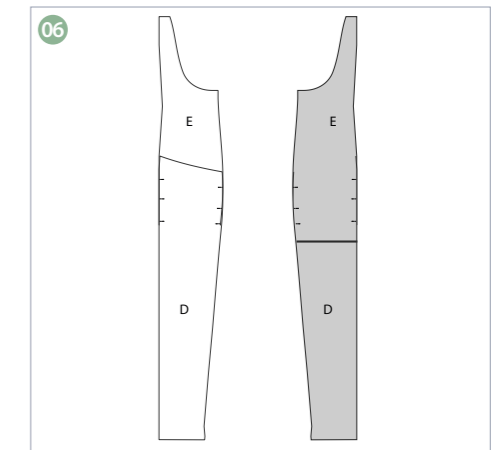
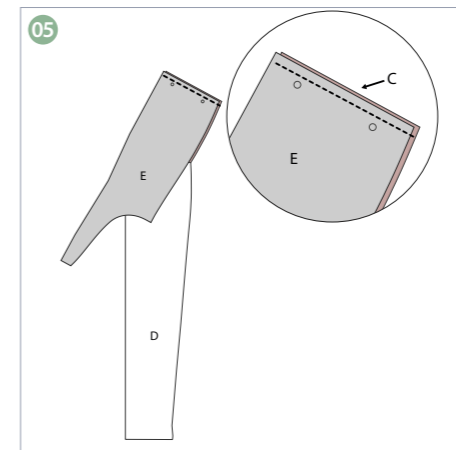
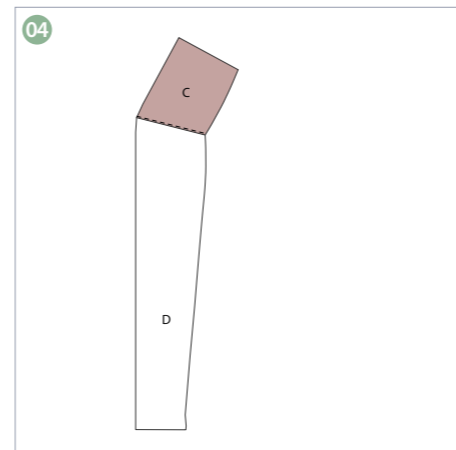
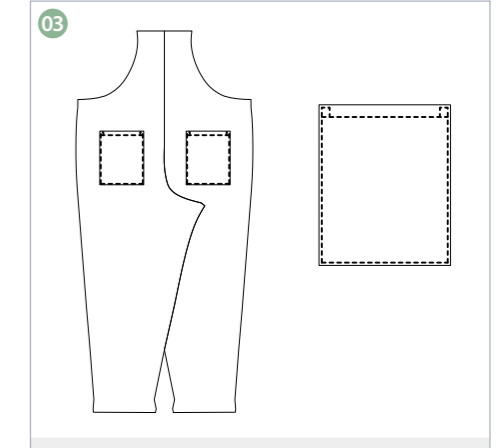
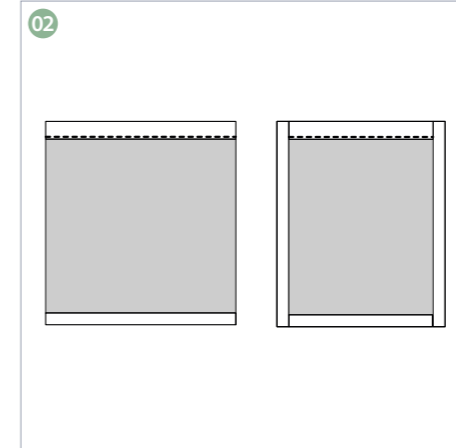
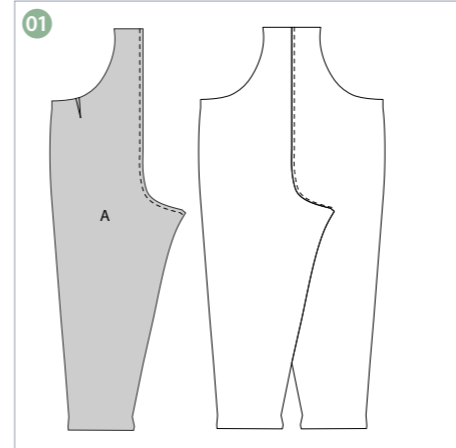


PATSY OVERALLS

CUTTING LAYOUTS



FABRIC KEY - STEPS



STITCHING TERMS

RS/WS: Right side/wrong side of the fabric. The right side usually has the print, design or texture and the wrong side is usually plain or duller in appearance. The right side can usually be identified as the side which has text along the selvedge edges.

Machine tack: Use a long stitch length to hold a section in place. Don't backstitch at the start and end.

Finish the seams: Finish the raw edges with a zigzag stitch or an overlocker.

Press: Pressing fabric is placing the iron down, holding it for a few seconds, lifting it and placing it down again. Ironing is the movement of sliding the iron back and forth to remove creases.

Understitch: Stitch along the seam allowance, close to the seam line, usually on the side that will be on the inside of the garment such as the facing. This will hold the seam allowance in place when the garment is worn.

Stay stitch: Stitching in areas prone to stretching such as necklines to hold the fabric in shape while it is being worked on.

Topstitch: Stitching usually from the right side of the garment to hold seam allowances in place, or can be used for decorative purposes.

Toile: A test garment, often made from calico or muslin, to check the fit or test a pattern before the real fabric is used. Known as a muslin in the US. Once you have made a toile and tried it on, mark any adjustments and then transfer your adjustments to the paper pattern.

FLAT PATTERN ADJUSTMENTS

Select the size closest to your bust measurement and grade up, down or between sizes at the waist and hem if necessary. Look up any necessary adjustments in a fitting reference book if you are not familiar with them. Make a toile before cutting into any special fabric! If you are making a size 18 (EU 46, US 46), you can choose whether to make the overalls using either size range.

PREPARATION CHECK LIST

Step one Read through the instructions and research any unfamiliar techniques. The Patsy Overalls don't require any form of fastening so they make a great project for beginners.

Step two Gather all of your fabrics, notions and any tools needed (listed on the reverse of the pattern envelope).

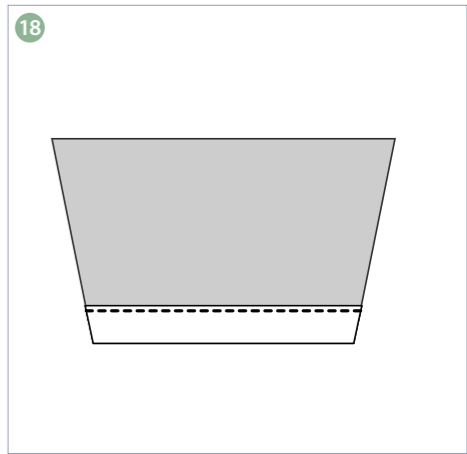
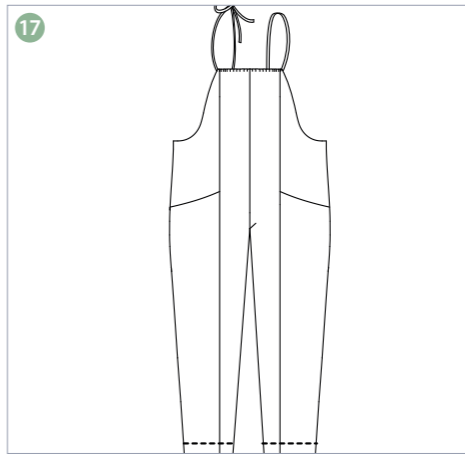
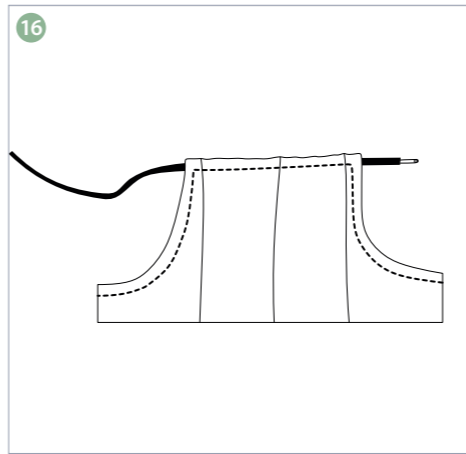
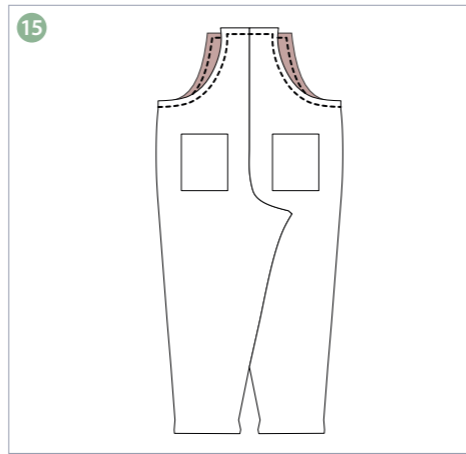
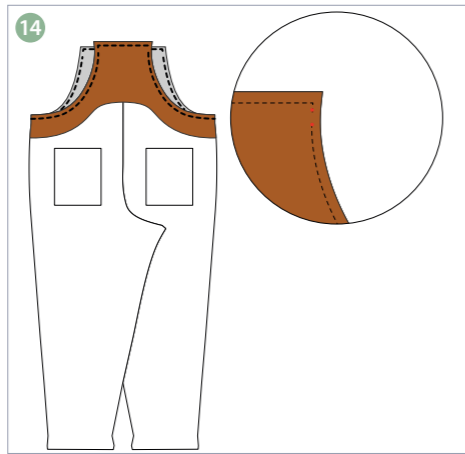
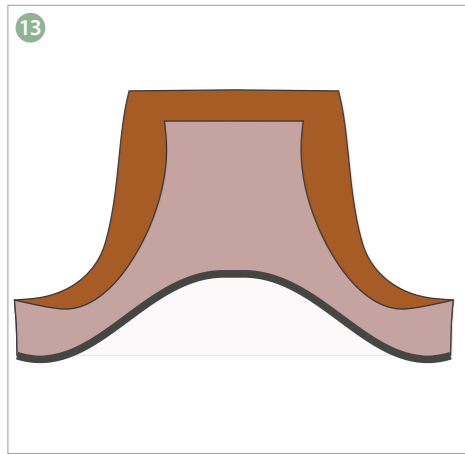
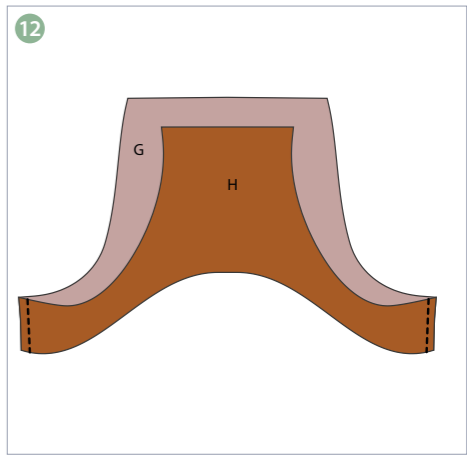
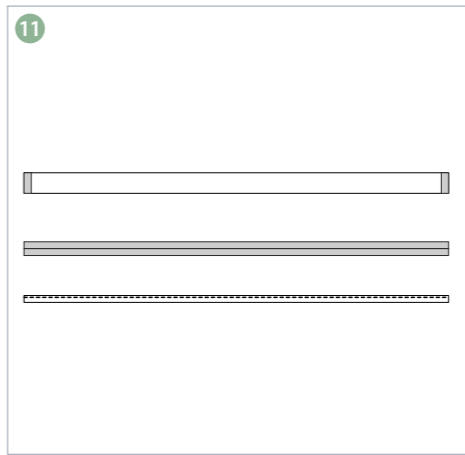
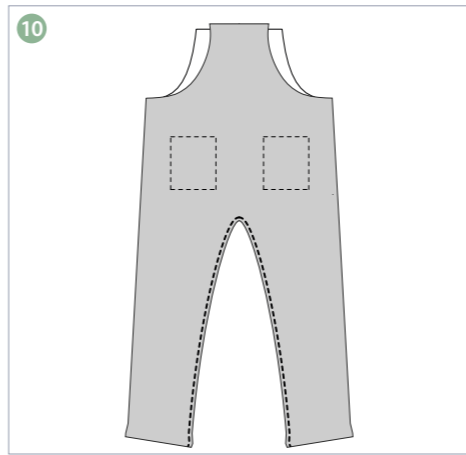
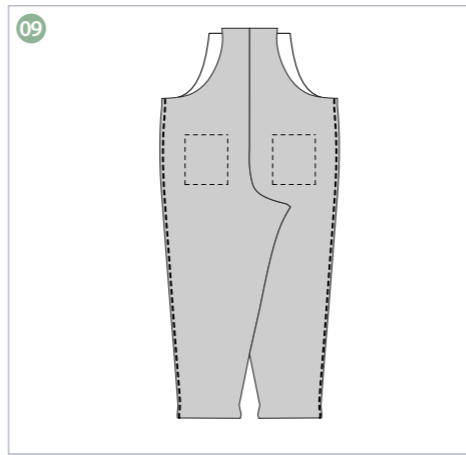
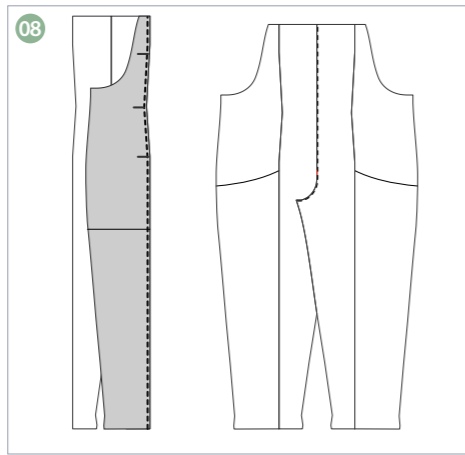
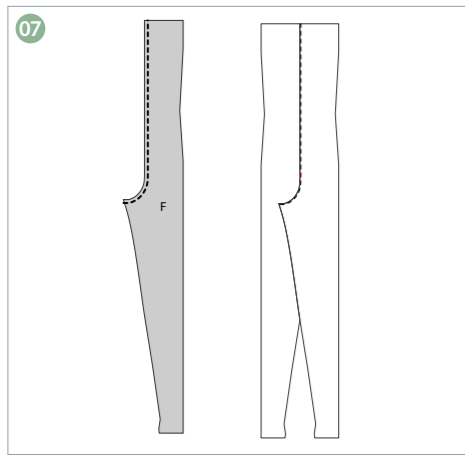
Step three As natural fabrics (cottons, linens etc.) lend themselves well to the Patsy Overalls, we recommend pre-washing your fabric to avoid any shrinkage.

CUTTING OUT

Step one From the main fabric cut:

- Back (A):** one pair
- Back Pocket (B):** one pair
- Front Pocket Facing (C):** one pair
- Side Front Leg (D):** one pair
- Side Front Bodice (E):** one pair
- Centre Front (F):** one pair
- Front Facing (G):** one on fold
- Back Facing (H):** one on fold
- Strap (I):** one on fold

PATSY OVERALLS



MAKING THE OVERALLS

PREPARATION

Step one To sew the back darts, mark the dart placement on the WS of the Back with tailor's chalk or a disappearing ink marking pen.

Step two With RS together, fold along the centre line, matching dart legs. Pin in place. Stitch the dart, beginning at the sides and sewing to the dart point. Continue sewing past the dart point for a few stitches, without backstitching. Raise your needle, leave a thread chain of at least 3cm. Tie the chain at the dart point and cut the threads, leaving approximately 1cm after the knot. Press towards the centre.

Step three With RS together, sew the two Back pieces together along the centre back seam line. Finish the edges together and press them toward the RS of the garment. Edgestitch seam. ⁰¹

ADDING THE BACK POCKETS

Step one Finish the four edges of the Back Pockets.

Step two On the RS of the Back Pocket, trace a line 1.5cm from the top. With WS together, fold along the line. Press. Sew the top of the pocket 1.2cm from the edge to keep it in place.

Step three On the RS of the Back Pocket, draw a line 1cm around the other three sides. Fold the bottom edge once along the traced line, press and then fold the other two sides toward the centre. Press the whole pocket to hold these folds firmly in place. ⁰²

Step four Pin the Back Pockets on the Back pieces, matching the corners of the pockets with the pocket placement marks.

Step five Neatly topstitch the Back Pockets in place 2mm from the folded edges. Finish the top of the side edges of the pocket by sewing small squares to reinforce ⁰³

CREATING THE POCKET POUCH

Step one With RS together, and matching notches, stitch the Front Pocket Facing to the Side Front Leg. Press the seam towards the Front Pocket Facing and edgestitch. ⁰⁴

Step two With RS together, and matching notches, stitch the Side Front Bodice to the Front Pocket Facing. Finish the seam. ⁰⁵

Step three Flip the Front Pocket Facing and bottom of the Side Front Bodice to the WS of the Side Front Leg. Pin (or tack) the sides of the pocket to the body of the garment in order to keep it even.

Step four Repeat these steps to create the pocket pouch on the other side. ⁰⁶

ASSEMBLING THE FRONT

Step one With RS together, sew the Centre Front pieces. Finish the seams together and press them toward the left side of the garment. Edgestitch. ⁰⁷

Step two With RS together, pin centre of the assembled Centre Front piece to the front sides (Side Front Bodice, Front Pocket Facing, and Side Front Leg). Finish the seams together and press them toward the centre of the garment. ⁰⁸

ASSEMBLING THE OVERALLS

Step one With RS together, sew the assembled front and back pieces at the sides. Finish the seams together and press toward the back of the garment. ⁰⁹

Step two With RS together, sew the front and the back pieces at the inseam. Finish the seams together and press them toward the back of the garment. ¹⁰

Step three Fold the ends of the Strap over by 1cm toward the WS of the fabric. Press well.

Step four With WS together, fold the Strap in half lengthwise so the edges meet in the middle. Press well.

Step five Fold the Strap in half again, so that the pressed edges meet in the middle. Press well. Pin along the Strap, to keep it closed and topstitch. ¹¹

ATTACHING THE FRONTS

Step one With RS together, stitch the Front Facing and Back Facing together. Press seams open. ¹²

Step two Finish the bottom of the facing with matching thread or fold it 1cm towards the WS and topstitch if you don't have matching thread. ¹³

Step three Pin the facing to the body, RS together.

Step four Stitch in place, stopping and backstitching at the marked notches. The section between the two notches must remain open in order to insert the strap later on. ¹⁴

Step five Turn the facing toward the WS. Press. Sew a row of stitches 1.7cm from the edge of the facing to create a casing for the Straps and to keep the facing in place. ¹⁵

FINISHING

Step one Using a safety pin, insert the Strap into the front and back casings. ¹⁶

Step two Try on the overalls, adjust the length of the strap and tie the ends.

Step three Adjust the length of the inseam if necessary. The hem allowance is 4cm, and the garment is drafted to fall above the ankle. ¹⁷

Step four Fold bottom edge of the fabric 1cm to WS and press.

Step five Turn the pressed edge under 3cm, press and topstitch in place. ¹⁸

Simply Sewing
FRESH IDEAS WITH FABRIC

WWW.GATHERED.HOW/SIMPLYSEWING

© Printed in the UK for *Simply Sewing*. Design by Readyto sew. Supplied by Our Media Ltd (an Immediate Group Company), Bristol, BS1 4ST. To be used for individual, private home use only. Not for commercial or manufacturing purposes. Not for resale.

readyto sew

WWW.READYTOSEW.FR