

4	-----
5	-----
6	-----
7	-----
8	-----
9	-----
10	-----
11	-----
12	-----
13	-----
14	-----
15	-----
16	-----
17	-----
18	-----

PATTERN KEY

shorten/lengthen

cut on fold

grainline

readytosew

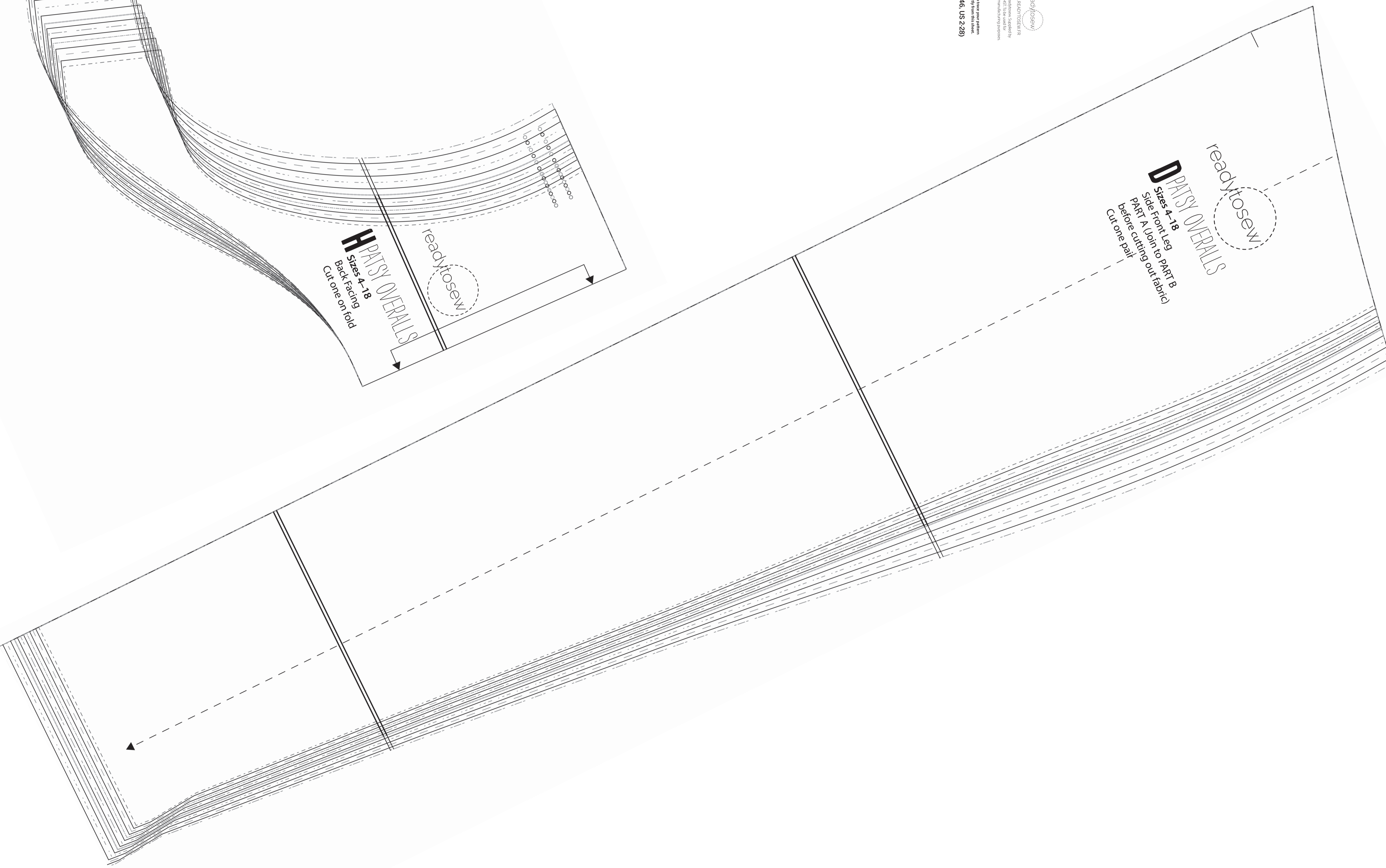
D PATSY OVERALLS

Sizes 4-18
Side Front Leg
PART A (Join to PART B
before cutting out fabric)
Cut one pair

readytosew

H PATSY OVERALLS

Sizes 4-18
Back Facing
Cut one on fold



SHEET 4 OF 8

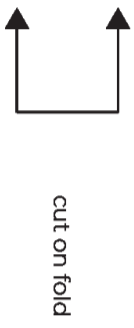
Pattern sheets are printed double sided - you'll need to trace your pattern pieces onto pattern paper rather than cutting out directly from this sheet.

SIZE KEY - UK sizes 4-18 (EU 32-46, US 2-16)

4	-----
5	-----
6	-----
7	-----
8	-----
9	-----
10	-----
11	-----
12	-----
13	-----
14	-----
15	-----
16	-----
17	-----
18	-----

PATTERN KEY

shorten/lengthen



readytosew

EPATSY OVERALLS
Sizes 4-18
Side Front Bodice
Cut one pair

