



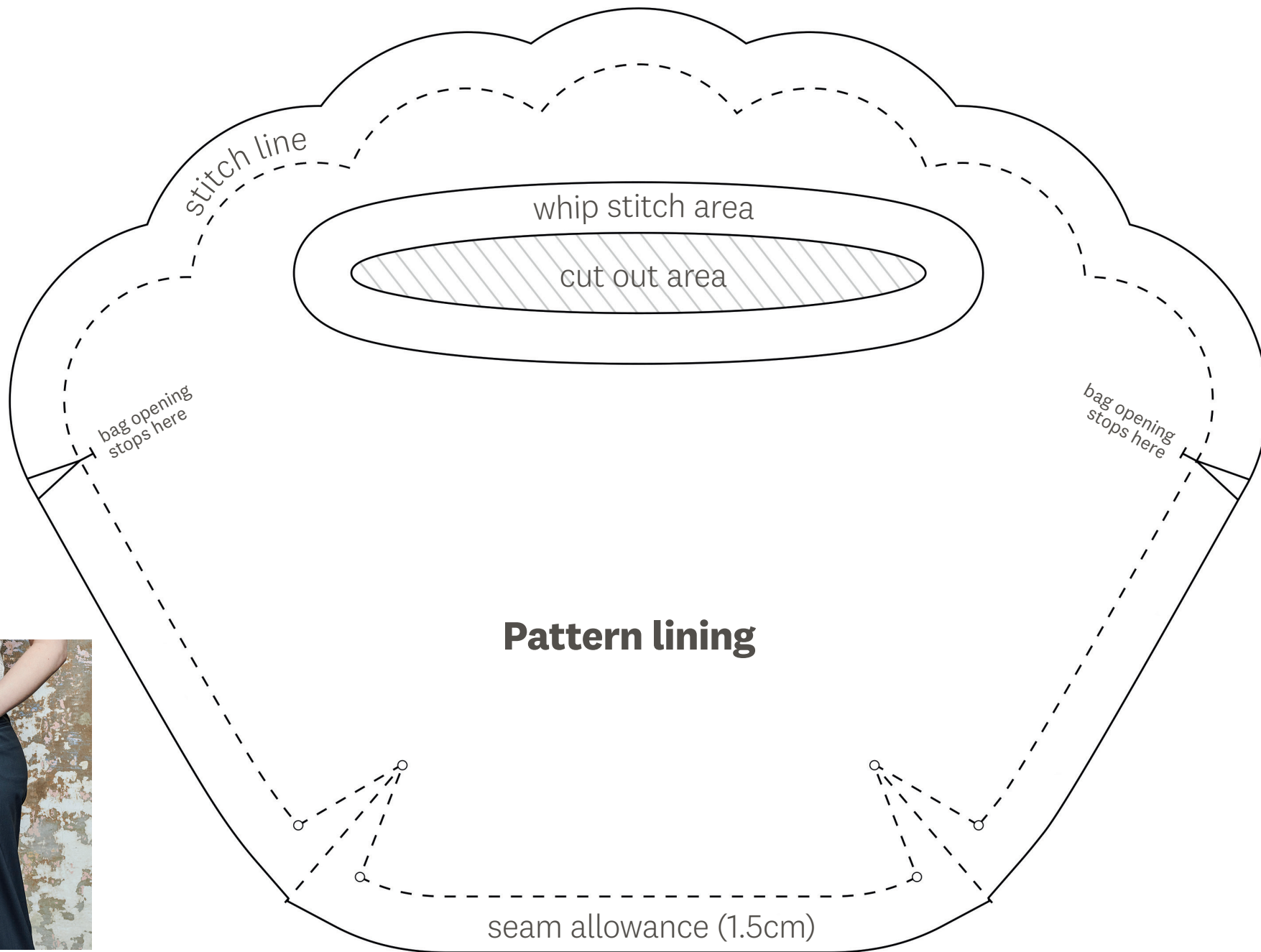
TEMPLATES

ISSUE 144

COPYRIGHT GUIDELINES FOR PROJECTS

We have requested permission from these designers so you can make and sell their projects when adhering to the conditions below. These are the crochet shell face wipes by Lindsey Newns (p30) and painted ceramic vases by Louise Grant (p48). Please credit the designer where appropriate and when requested. *Mollie* encourages creativity, and want to help you make small batches of handmade items to sell. You can handmade as many of our labelled projects as you wish to sell for yourself, a local event or for charity. You cannot sell in shops (online or otherwise) or go into mass production, so you cannot manufacture in large quantities, especially by machine. Selling photocopies of any part of this magazine is prohibited - please respect one another's copyright. All toys for sale in the UK must meet a list of safety requirements, set out in the Toy (Safety) Regulations 2011. To prove the requirements are met, all toys should carry a CE Mark - a declaration by the maker that a toy is safe. In order to use the CE mark, you must check your products meet the requirements under the Regulations. If you're using one of our patterns to make items that appeal to children under 14, please take the necessary steps to comply with legislation. Visit www.gov.uk/ce-marking or visit shop.conformance.co.uk to find out about self-certification packs.

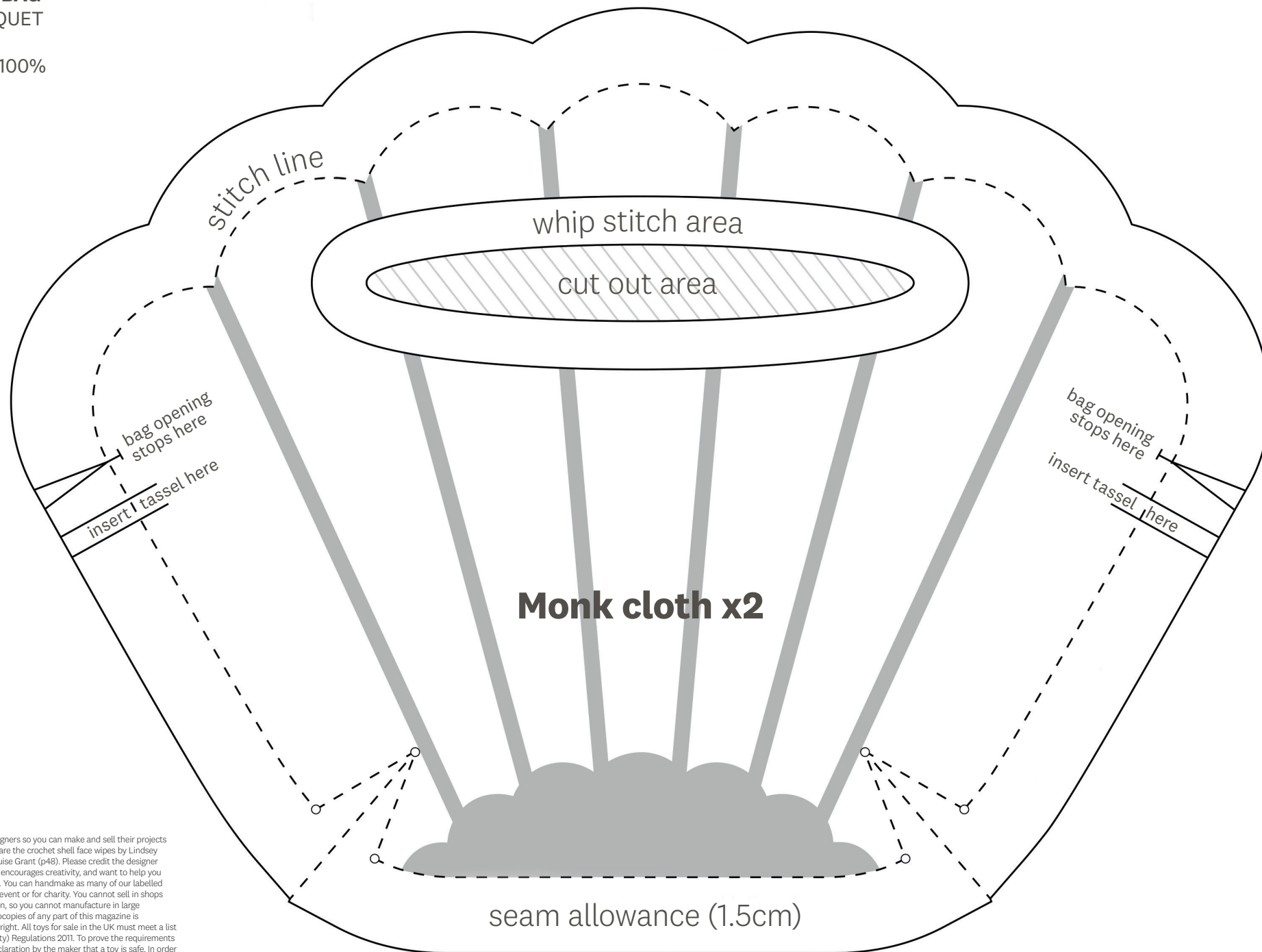
PUNCH NEEDLE BAG
BY CHUCHU BRIQUET
FROM PAGE 28
PHOTOCOPY AT 100%



COPYRIGHT GUIDELINES FOR PROJECTS

We have requested permission from these designers so you can make and sell their projects when adhering to the conditions below. These are the crochet shell face wipes by Lindsey Newns (p30) and painted ceramic vases by Louise Grant (p48). Please credit the designer where appropriate and when requested. *Mollie* encourages creativity, and want to help you make small batches of handmade items to sell. You can handmade as many of our labelled projects as you wish to sell for yourself, a local event or for charity. You cannot sell in shops (online or otherwise) or go into mass production, so you cannot manufacture in large quantities, especially by machine. Selling photocopies of any part of this magazine is prohibited - please respect one another's copyright. All toys for sale in the UK must meet a list of safety requirements, set out in the Toy (Safety) Regulations 2011. To prove the requirements are met, all toys should carry a CE Mark - a declaration by the maker that a toy is safe. In order to use the CE mark, you must check your products meet the requirements under the Regulations. If you're using one of our patterns to make items that appeal to children under 14, please take the necessary steps to comply with legislation. Visit www.gov.uk/ce-marking or visit shop.conformance.co.uk to find out about self-certification packs.

PUNCH NEEDLE BAG
 BY CHUCHU BRIQUET
 FROM PAGE 28
 PHOTOCOPY AT 100%



COPYRIGHT GUIDELINES FOR PROJECTS

We have requested permission from these designers so you can make and sell their projects when adhering to the conditions below. These are the crochet shell face wipes by Lindsey Newns (p30) and painted ceramic vases by Louise Grant (p48). Please credit the designer where appropriate and when requested. *Mollie* encourages creativity, and want to help you make small batches of handmade items to sell. You can handmake as many of our labelled projects as you wish to sell for yourself, a local event or for charity. You cannot sell in shops (online or otherwise) or go into mass production, so you cannot manufacture in large quantities, especially by machine. Selling photocopies of any part of this magazine is prohibited - please respect one another's copyright. All toys for sale in the UK must meet a list of safety requirements, set out in the Toy (Safety) Regulations 2011. To prove the requirements are met, all toys should carry a CE Mark - a declaration by the maker that a toy is safe. In order to use the CE mark, you must check your products meet the requirements under the Regulations. If you're using one of our patterns to make items that appeal to children under 14, please take the necessary steps to comply with legislation. Visit www.gov.uk/ce-marking or visit shop.conformance.co.uk to find out about self-certification packs.

POTATO STAMP TEMPLATE

BY MOLLY MAHON PAGE 28

PHOTOCOPY AT 100%

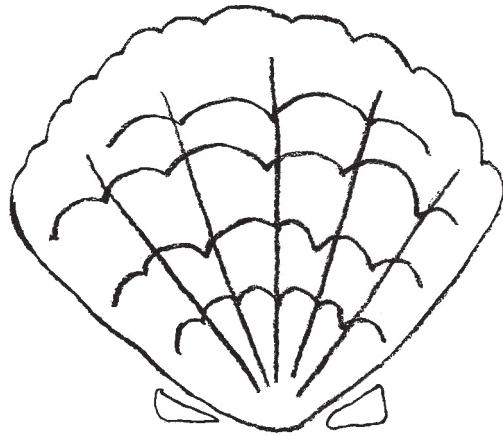
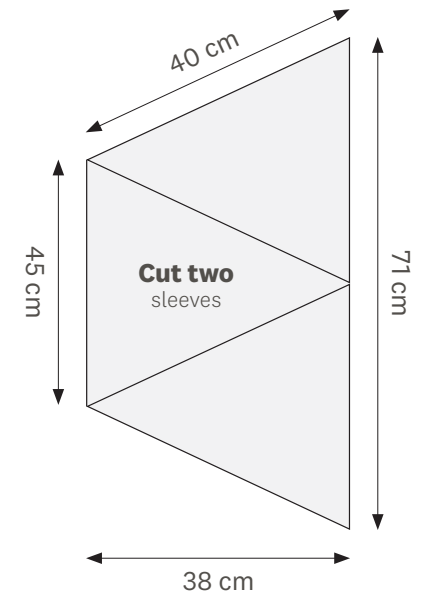
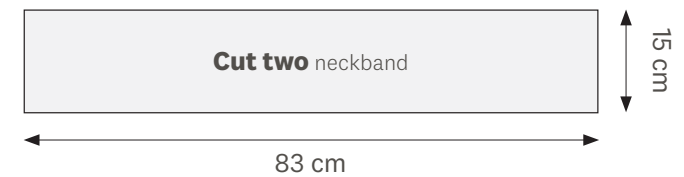
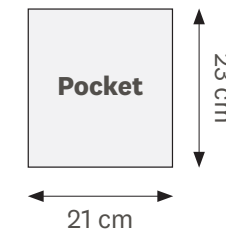
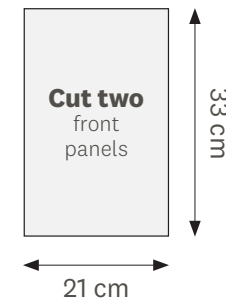
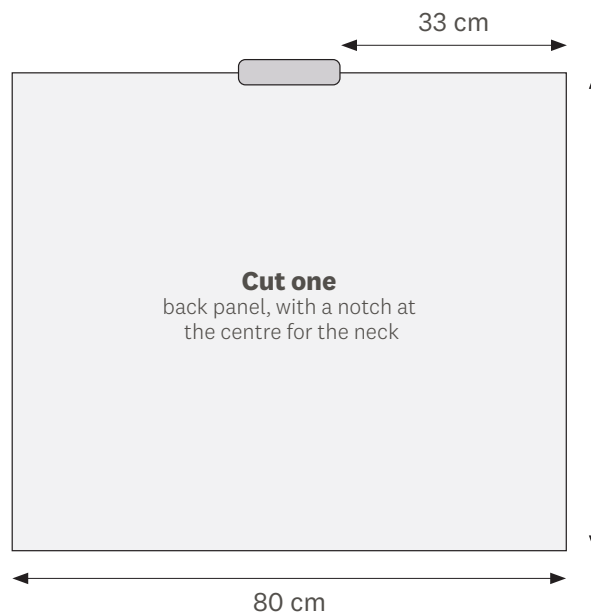


TABLE CLOTH COVERUP

MEASUREMENTS

BY ABBIE SMITH

PAGE 68



COPYRIGHT GUIDELINES FOR PROJECTS

We have requested permission from these designers so you can make and sell their projects when adhering to the conditions below. These are the crochet shell face wipes by Lindsey Newns (p30) and painted ceramic vases by Louise Grant (p48). Please credit the designer where appropriate and when requested. *Mollie* encourages creativity, and want to help you make small batches of handmade items to sell. You can handmade as many of our labelled projects as you wish to sell for yourself, a local event or for charity. You cannot sell in shops (online or otherwise) or go into mass production, so you cannot manufacture in large quantities, especially by machine. Selling photocopies of any part of this magazine is prohibited - please respect one another's copyright. All toys for sale in the UK must meet a list of safety requirements, set out in the Toy (Safety) Regulations 2011. To prove the requirements are met, all toys should carry a CE Mark - a declaration by the maker that a toy is safe. In order to use the CE mark, you must check your products meet the requirements under the Regulations. If you're using one of our patterns to make items that appeal to children under 14, please take the necessary steps to comply with legislation. Visit www.gov.uk/ce-marking or visit shop.conformance.co.uk to find out about self-certification packs.