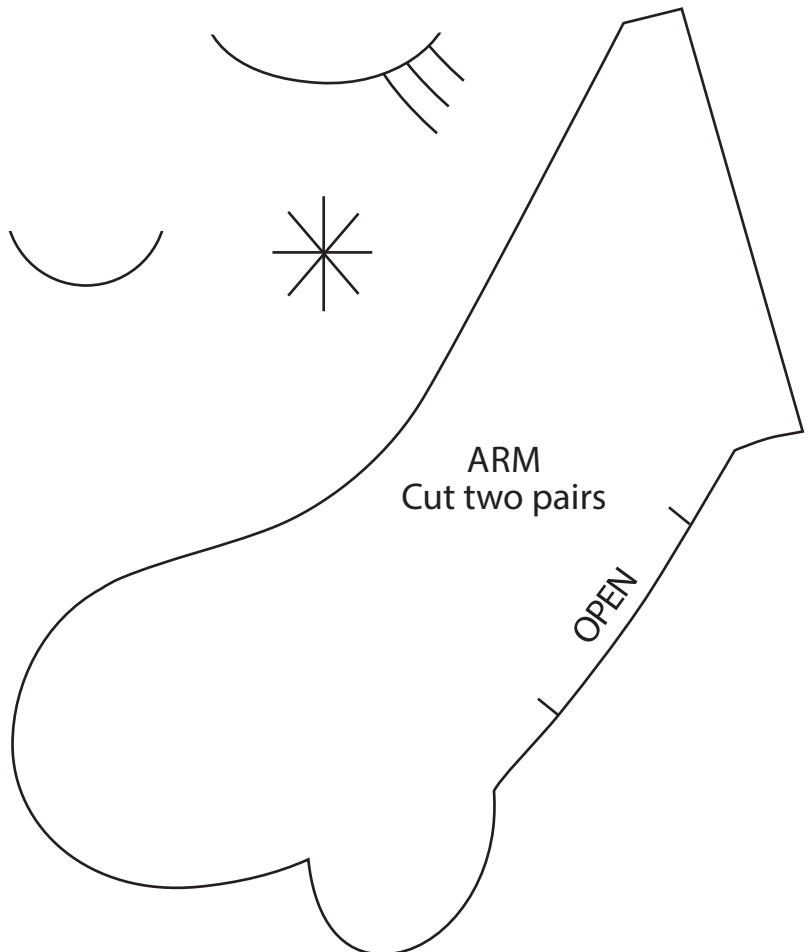
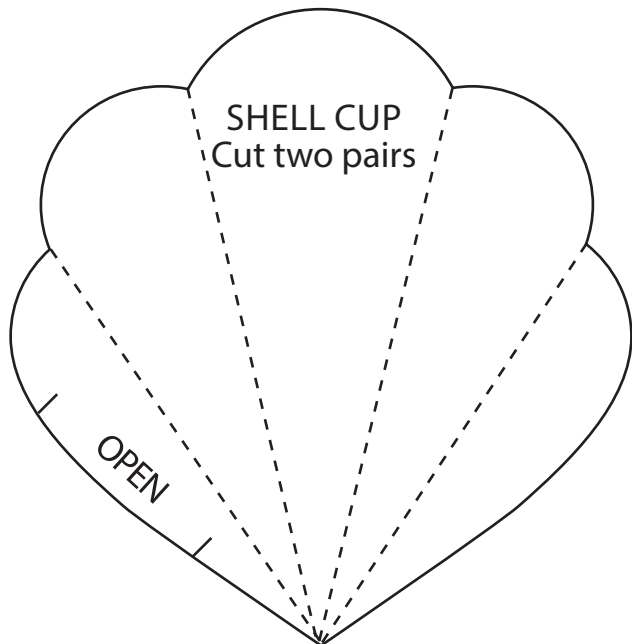
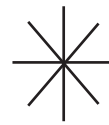
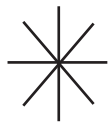
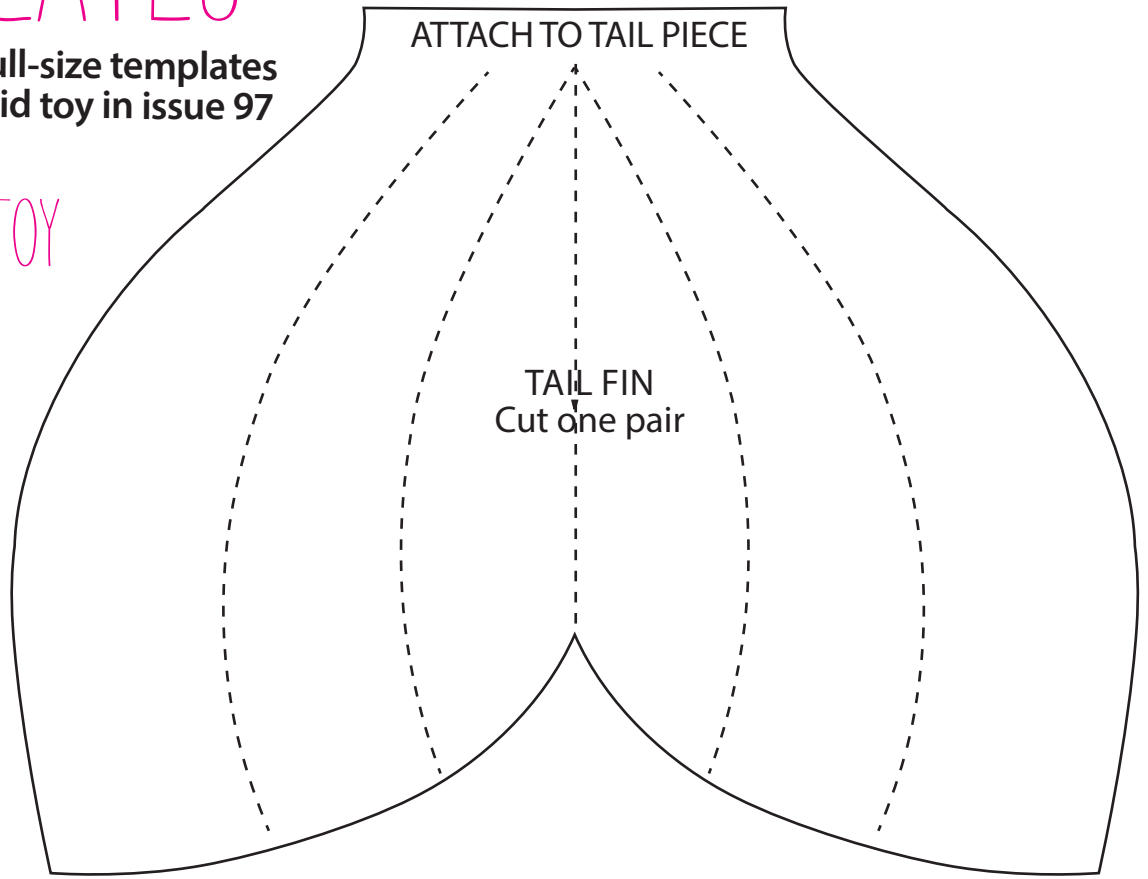


TEMPLATES

Here are the full-size templates for the mermaid toy in issue 97

MERMAID TOY

PAGE 79
ACTUAL SIZE



TEMPLATES

ATTACH TO BODY PIECE HERE

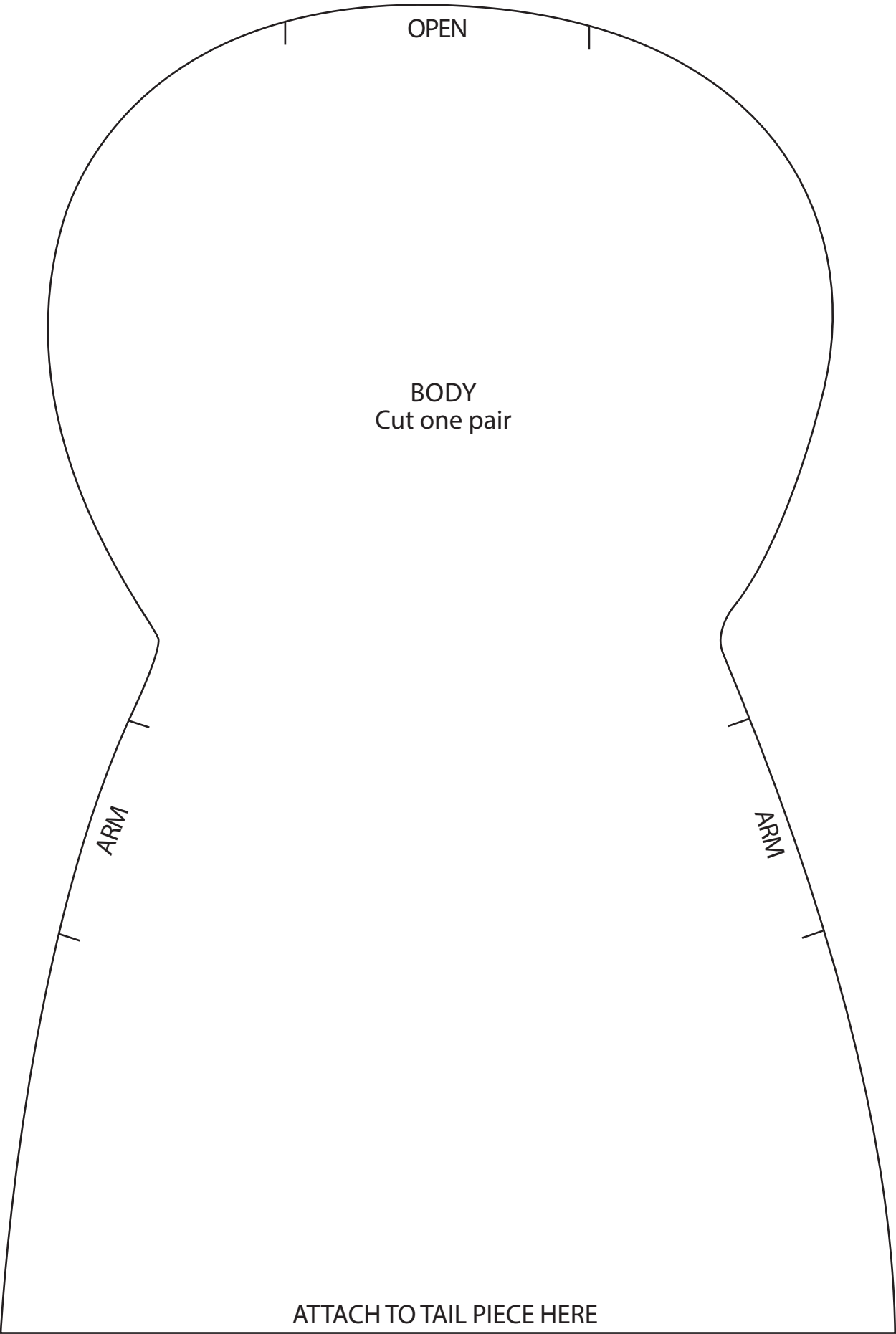
TAIL
Cut one pair

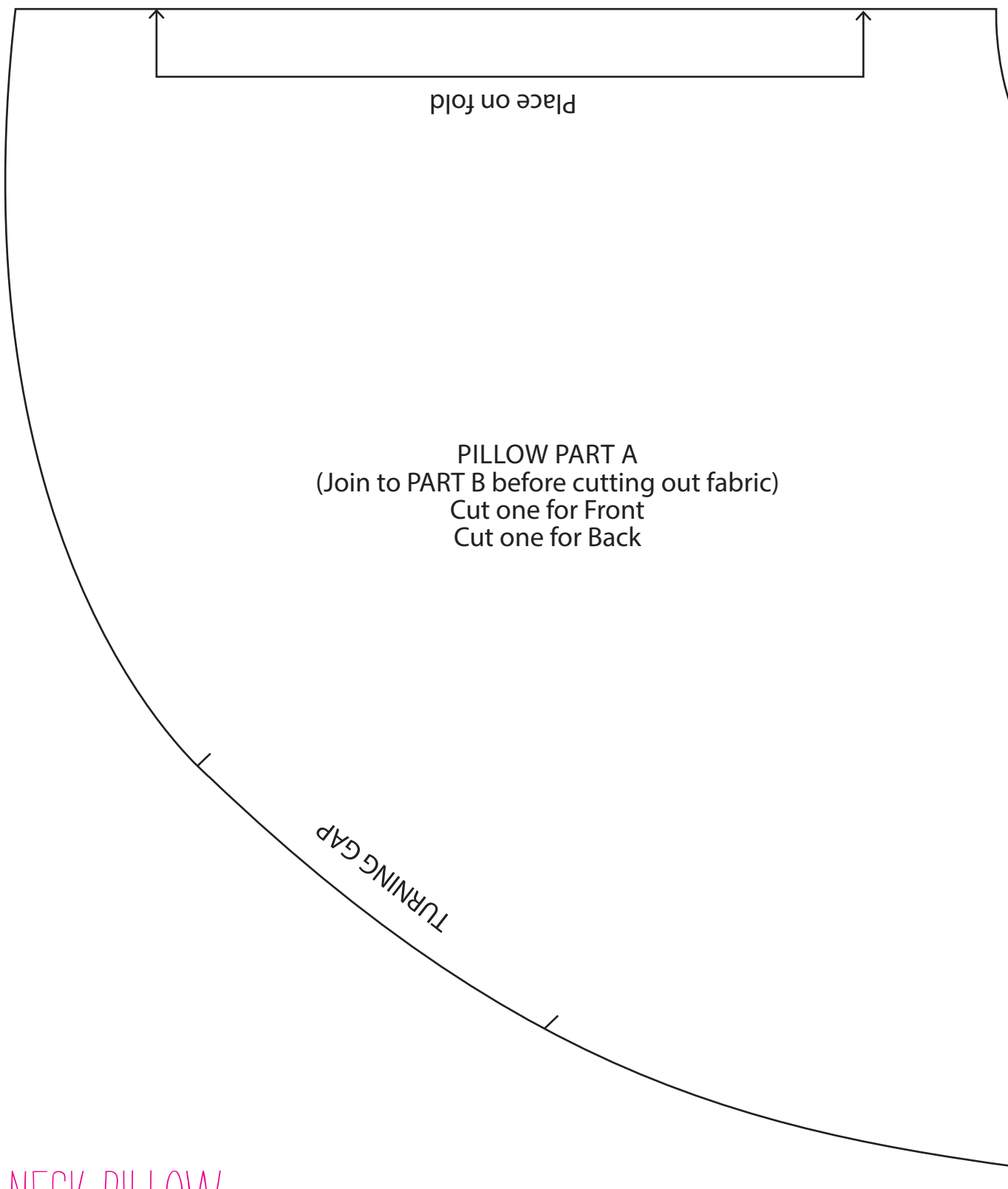
ATTACH TO FIN HERE

OPEN

SCALE
Cut six pairs
(three pairs turquoise,
three pairs light
turquoise)

—|• TEMPLATES •|—

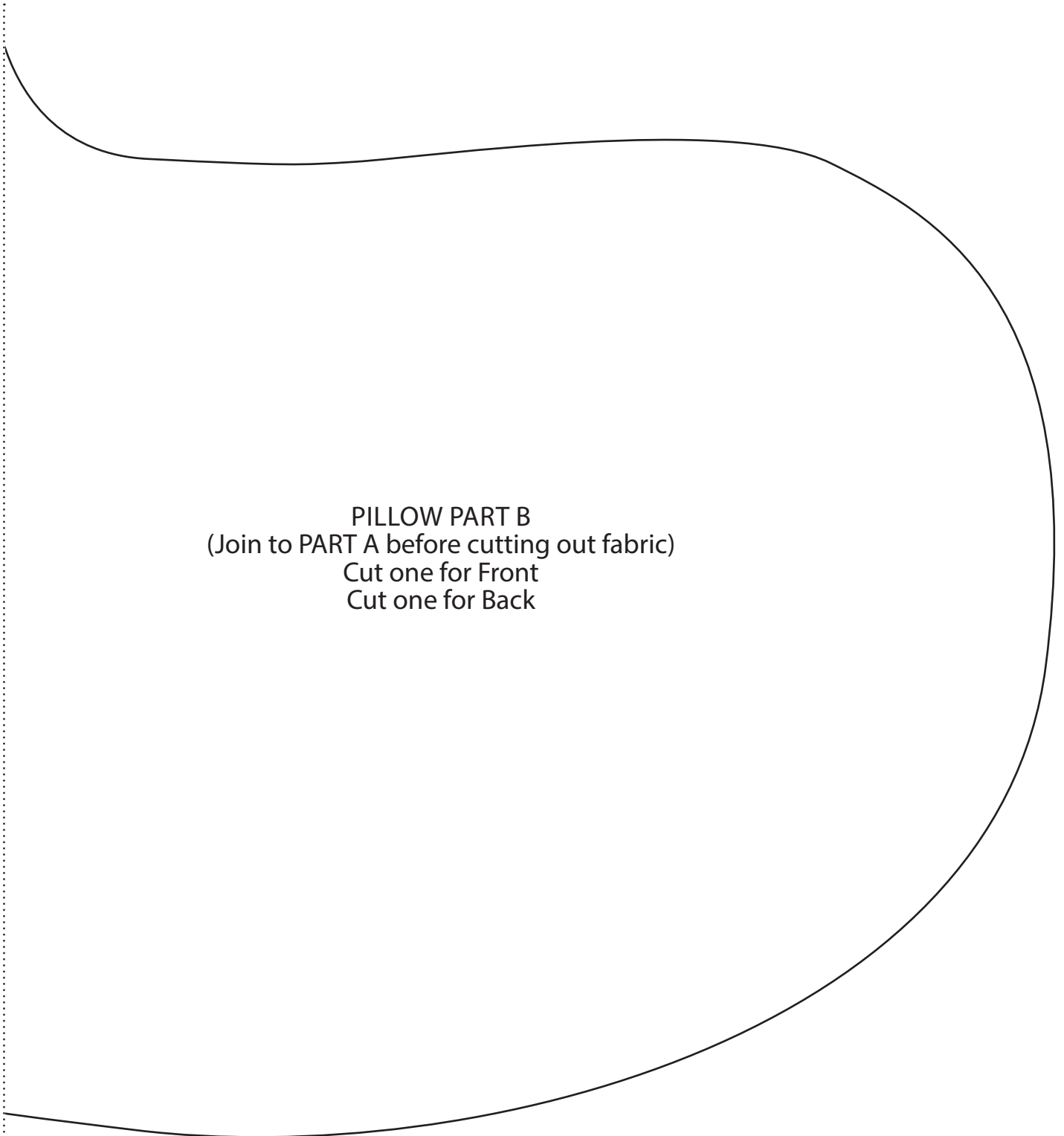




NECK PILLOW

PAGE 32

ACTUAL SIZE



PILLOW PART B
(Join to PART A before cutting out fabric)
Cut one for Front
Cut one for Back

SUN HAT
PAGE 77
ACTUAL SIZE

