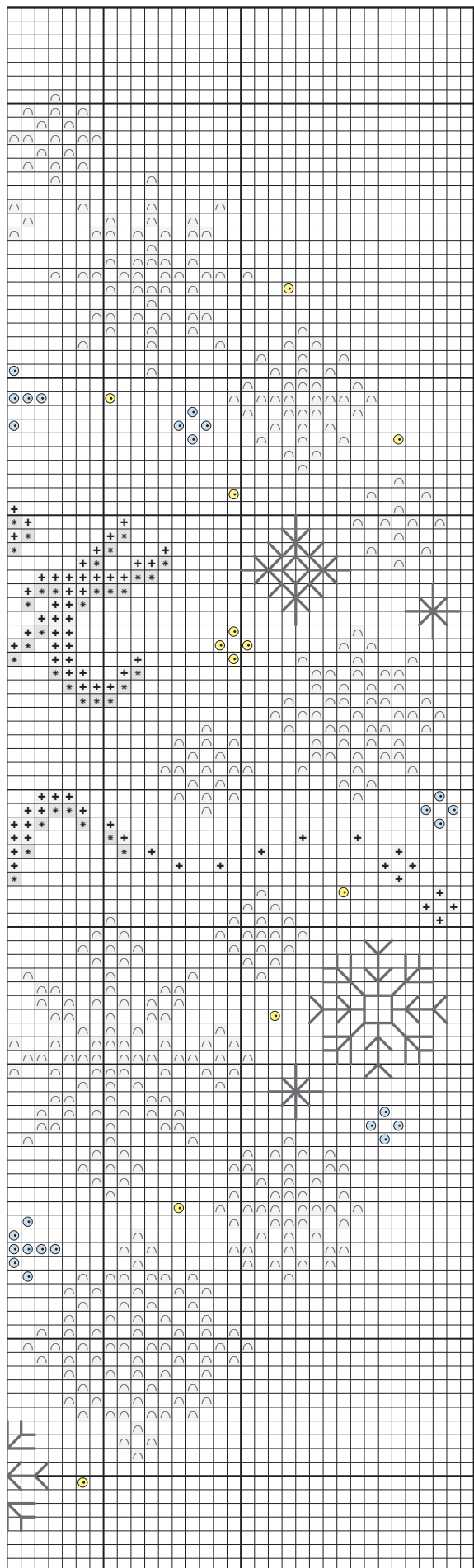


Let It Snow chart (left)



Let It Snow chart (right)

Let It Snow key

✕ Cross stitch in two strands

	DMC	Anchor	Madeira	
◡	B5200	1	2401	white

✕ Cross stitch in three strands

+	B5200	1	2401	white
---	-------	---	------	-------

✕ Cross stitch in two strands DMC Light Effects

*	E168			silver
---	------	--	--	--------

✕ Backstitch in one strand DMC Light Effects

—	E168			silver
---	------	--	--	--------

✕ Mill Hill seed beads

●	00479			white
●	02010			ice

STITCH COUNT 112 high x 112 wide

DESIGN AREA 14 HPI (28-count evenweave) – 20.5x20.5cm (8x8in)

SKEINS NEEDED 2x**B5200** (white)

This design was stitched using DMC stranded cotton, DMC Light Effects and Mill Hill seed beads

Designed by Jenny Van De Wiele