



TEMPLATES

ISSUE 150

COPYRIGHT GUIDELINES FOR PROJECTS

We have requested permission from these designers so you can make and sell their projects when adhering to the conditions below. Please credit the designer where appropriate and when requested. *Mollie* encourages creativity, and want to help you make small batches of handmade items to sell. You can handmake as many of our labelled projects as you wish to sell for yourself, a local event or for charity. You cannot sell in shops (online or otherwise) or go into mass production, so you cannot manufacture in large quantities, especially by machine. Selling photocopies of any part of this magazine is prohibited – please respect one another’s copyright. All toys for sale in the UK must meet a list of safety requirements, set out in the Toy (Safety) Regulations 2011. To prove the requirements are met, all toys should carry a CE Mark – a declaration by the maker that a toy is safe. In order to use the CE mark, you must check your products meet the requirements under the Regulations. If you’re using one of our patterns to make items that appeal to children under 14, please take the necessary steps to comply with legislation. Visit www.gov.uk/ce-marking or visit shop.conformance.co.uk to find out about self-certification packs.

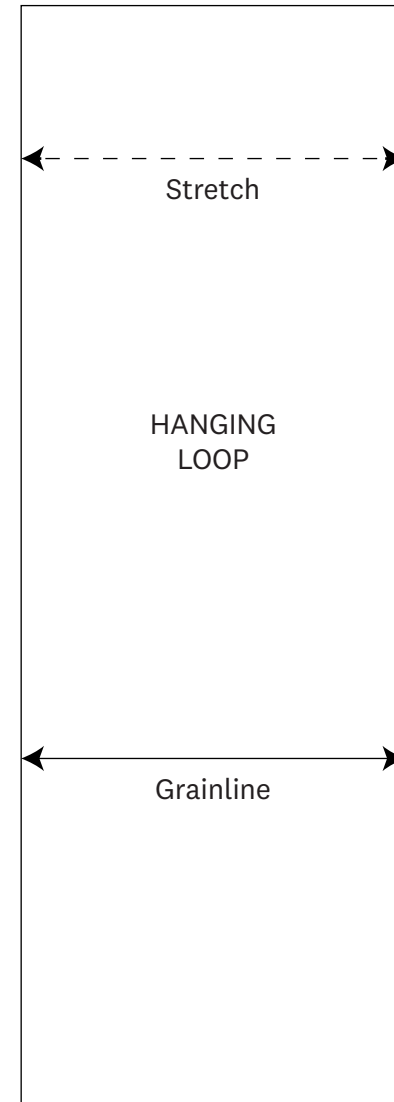
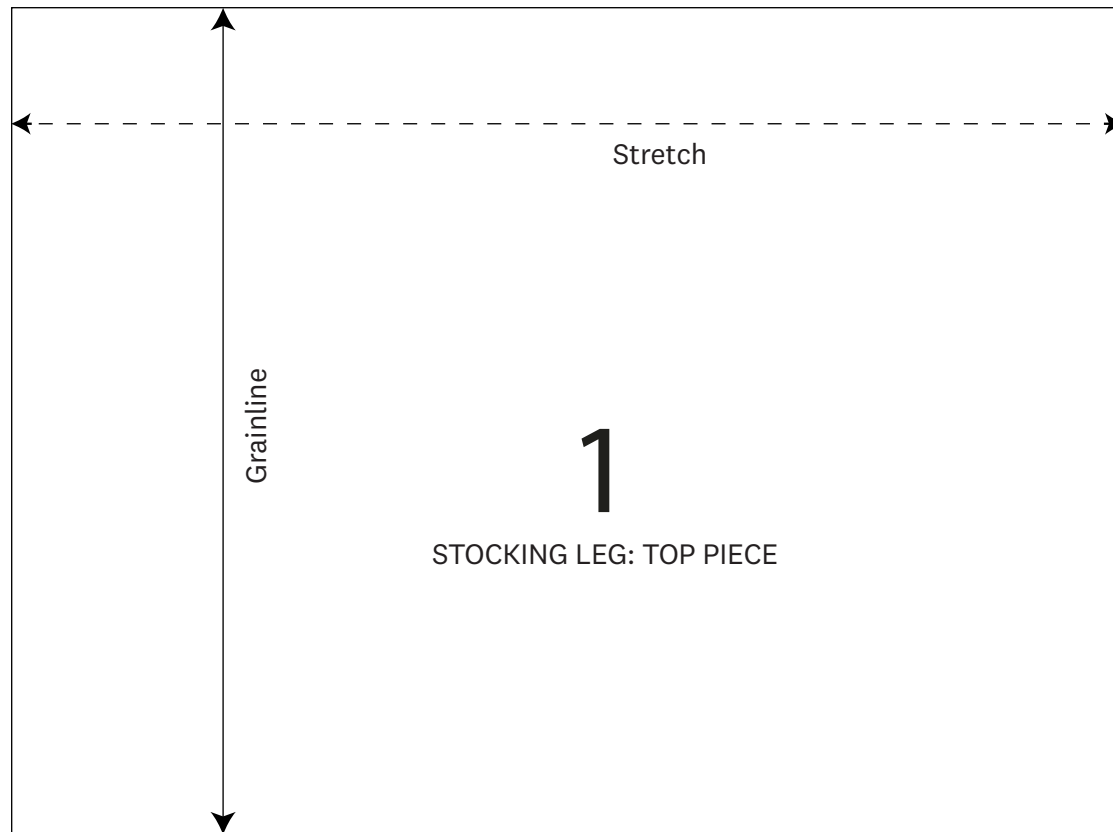


STOCKING

BY JOSIE MAGOOLA

PAGE 26

PHOTOCOPY AT 100%



COPYRIGHT GUIDELINES FOR PROJECTS

We have requested permission from these designers so you can make and sell their projects when adhering to the conditions below. Please credit the designer where appropriate and when requested. *Mollie* encourages creativity, and want to help you make small batches of handmade items to sell. You can handmade as many of our labelled projects as you wish to sell for yourself, a local event or for charity. You cannot sell in shops (online or otherwise) or go into mass production, so you cannot manufacture in large quantities, especially by machine. Selling photocopies of any part of this magazine is prohibited – please respect one another’s copyright. All toys for sale in the UK must meet a list of safety requirements, set out in the Toy (Safety) Regulations 2011. To prove the requirements are met, all toys should carry a CE Mark – a declaration by the maker that a toy is safe. In order to use the CE mark, you must check your products meet the requirements under the Regulations. If you’re using one of our patterns to make items that appeal to children under 14, please take the necessary steps to comply with legislation. Visit www.gov.uk/ce-marking or visit shop.conformance.co.uk to find out about self-certification packs.

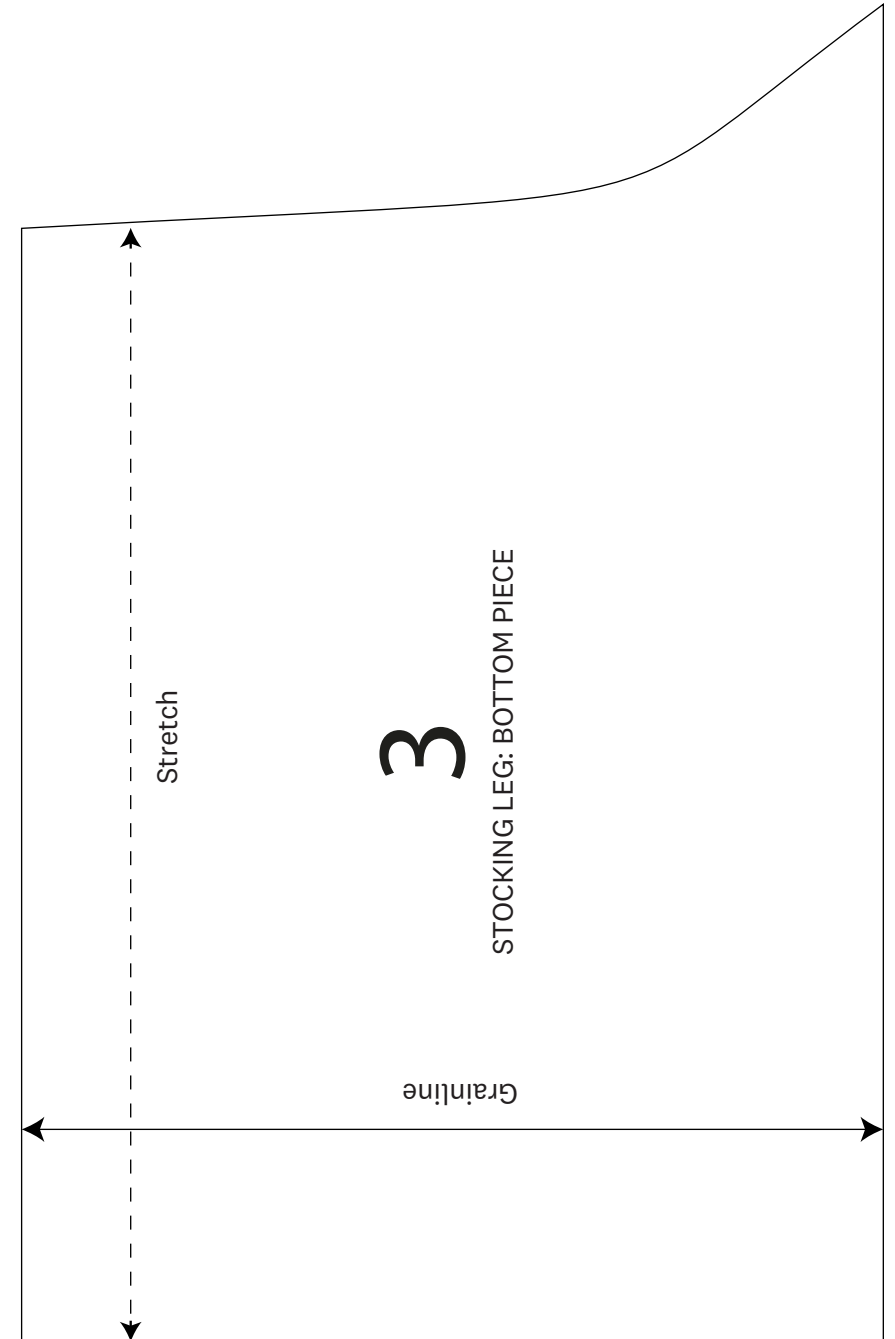
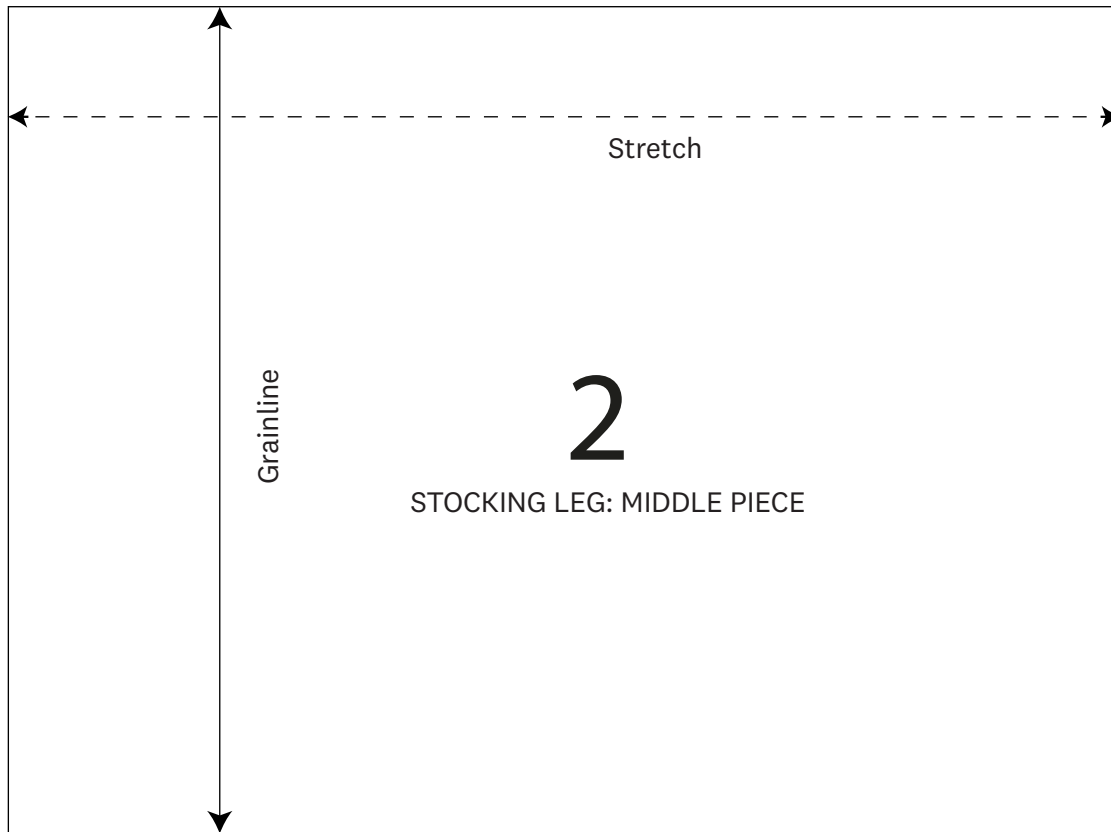


STOCKING

BY JOSIE MAGOOLA

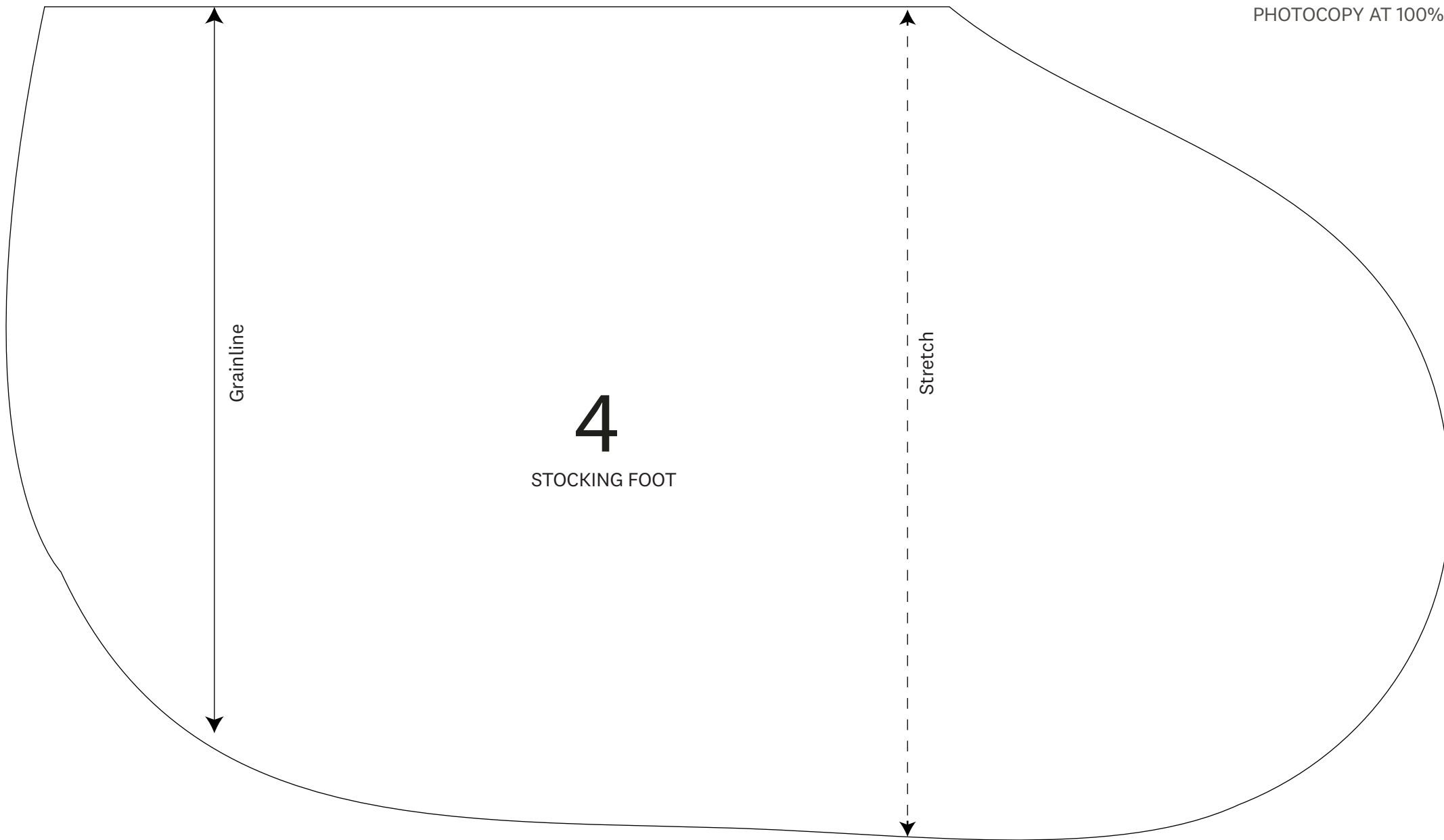
PAGE 26

PHOTOCOPY AT 100%



COPYRIGHT GUIDELINES FOR PROJECTS

We have requested permission from these designers so you can make and sell their projects when adhering to the conditions below. Please credit the designer where appropriate and when requested. *Mollie* encourages creativity, and want to help you make small batches of handmade items to sell. You can handmade as many of our labelled projects as you wish to sell for yourself, a local event or for charity. You cannot sell in shops (online or otherwise) or go into mass production, so you cannot manufacture in large quantities, especially by machine. Selling photocopies of any part of this magazine is prohibited – please respect one another’s copyright. All toys for sale in the UK must meet a list of safety requirements, set out in the Toy (Safety) Regulations 2011. To prove the requirements are met, all toys should carry a CE Mark – a declaration by the maker that a toy is safe. In order to use the CE mark, you must check your products meet the requirements under the Regulations. If you’re using one of our patterns to make items that appeal to children under 14, please take the necessary steps to comply with legislation. Visit www.gov.uk/ce-marking or visit shop.conformance.co.uk to find out about self-certification packs.



COPYRIGHT GUIDELINES FOR PROJECTS

We have requested permission from these designers so you can make and sell their projects when adhering to the conditions below. Please credit the designer where appropriate and when requested. *Mollie* encourages creativity, and want to help you make small batches of handmade items to sell. You can handmake as many of our labelled projects as you wish to sell for yourself, a local event or for charity. You cannot sell in shops (online or otherwise) or go into mass production, so you cannot manufacture in large quantities, especially by machine. Selling photocopies of any part of this magazine is prohibited - please respect one another's copyright. All toys for sale in the UK must meet a list of safety requirements, set out in the Toy (Safety) Regulations 2011. To prove the requirements are met, all toys should carry a CE Mark - a declaration by the maker that a toy is safe. In order to use the CE mark, you must check your products meet the requirements under the Regulations. If you're using one of our patterns to make items that appeal to children under 14, please take the necessary steps to comply with legislation. Visit www.gov.uk/ce-marking or visit shop.conformance.co.uk to find out about self-certification packs.

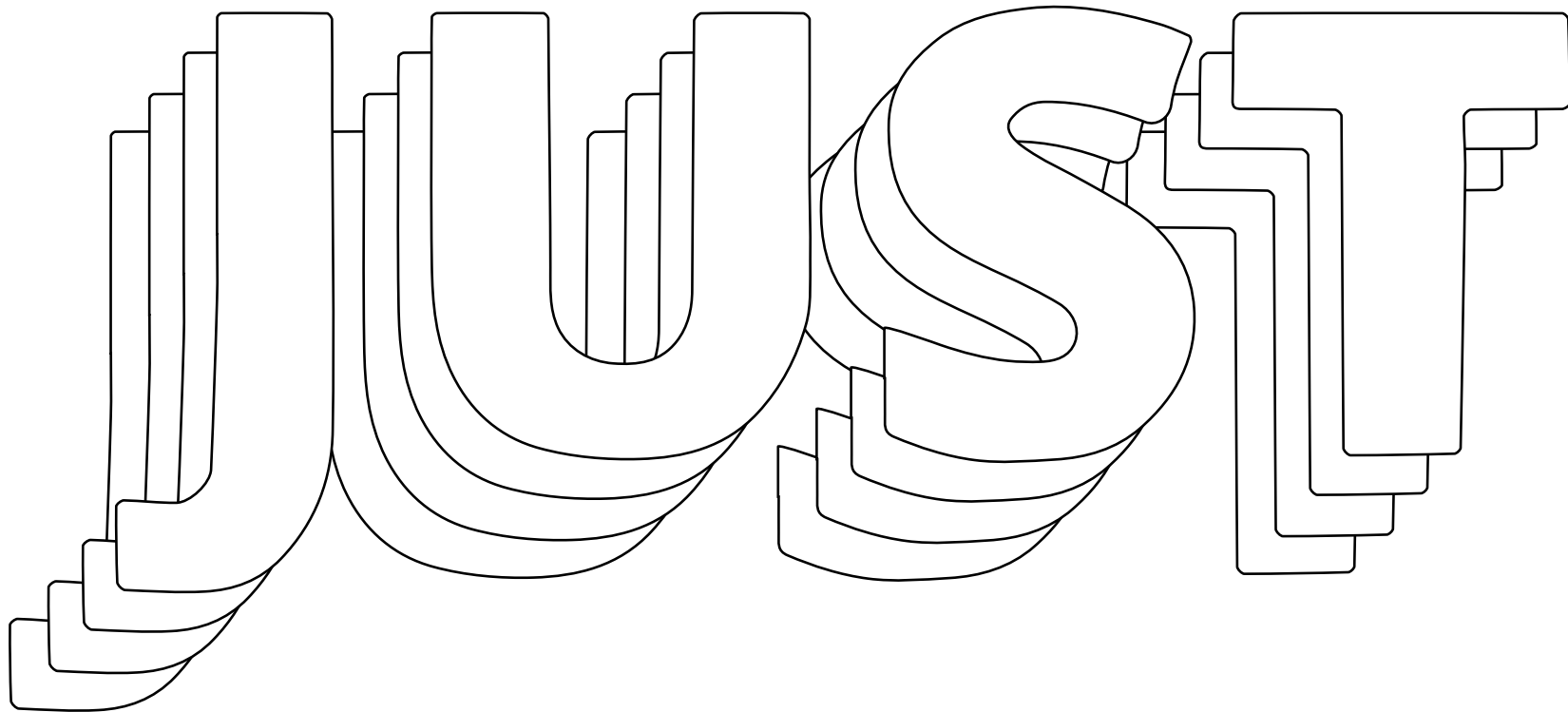


EMBROIDERED LYRICS

BY LUCY FREEMAN

PAGE 26

PHOTOCOPY AT 100%



COPYRIGHT GUIDELINES FOR PROJECTS

We have requested permission from these designers so you can make and sell their projects when adhering to the conditions below. Please credit the designer where appropriate and when requested. *Mollie* encourages creativity, and want to help you make small batches of handmade items to sell. You can handmade as many of our labelled projects as you wish to sell for yourself, a local event or for charity. You cannot sell in shops (online or otherwise) or go into mass production, so you cannot manufacture in large quantities, especially by machine. Selling photocopies of any part of this magazine is prohibited – please respect one another’s copyright. All toys for sale in the UK must meet a list of safety requirements, set out in the Toy (Safety) Regulations 2011. To prove the requirements are met, all toys should carry a CE Mark – a declaration by the maker that a toy is safe. In order to use the CE mark, you must check your products meet the requirements under the Regulations. If you’re using one of our patterns to make items that appeal to children under 14, please take the necessary steps to comply with legislation. Visit www.gov.uk/ce-marking or visit shop.conformance.co.uk to find out about self-certification packs.

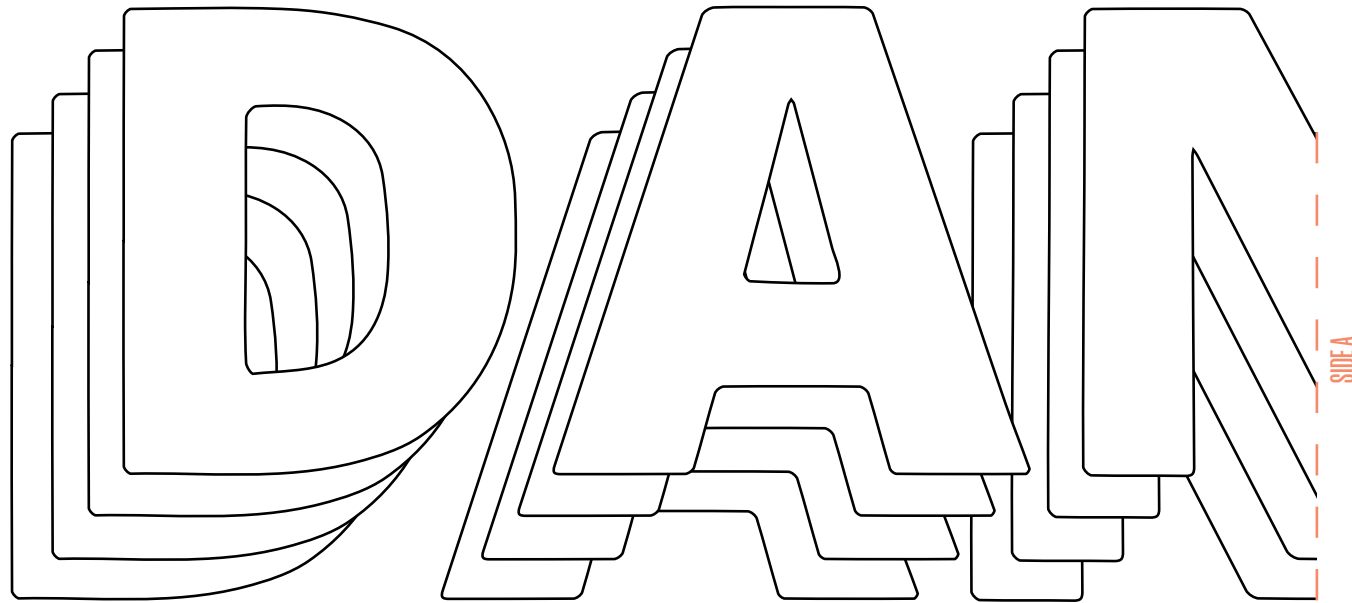


EMBROIDERED LYRICS

BY LUCY FREEMAN

PAGE 26

PHOTOCOPY AT 100%



COPYRIGHT GUIDELINES FOR PROJECTS

We have requested permission from these designers so you can make and sell their projects when adhering to the conditions below. Please credit the designer where appropriate and when requested. *Mollie* encourages creativity, and want to help you make small batches of handmade items to sell. You can handmade as many of our labelled projects as you wish to sell for yourself, a local event or for charity. You cannot sell in shops (online or otherwise) or go into mass production, so you cannot manufacture in large quantities, especially by machine. Selling photocopies of any part of this magazine is prohibited – please respect one another’s copyright. All toys for sale in the UK must meet a list of safety requirements, set out in the Toy (Safety) Regulations 2011. To prove the requirements are met, all toys should carry a CE Mark – a declaration by the maker that a toy is safe. In order to use the CE mark, you must check your products meet the requirements under the Regulations. If you’re using one of our patterns to make items that appeal to children under 14, please take the necessary steps to comply with legislation. Visit www.gov.uk/ce-marking or visit shop.conformance.co.uk to find out about self-certification packs.

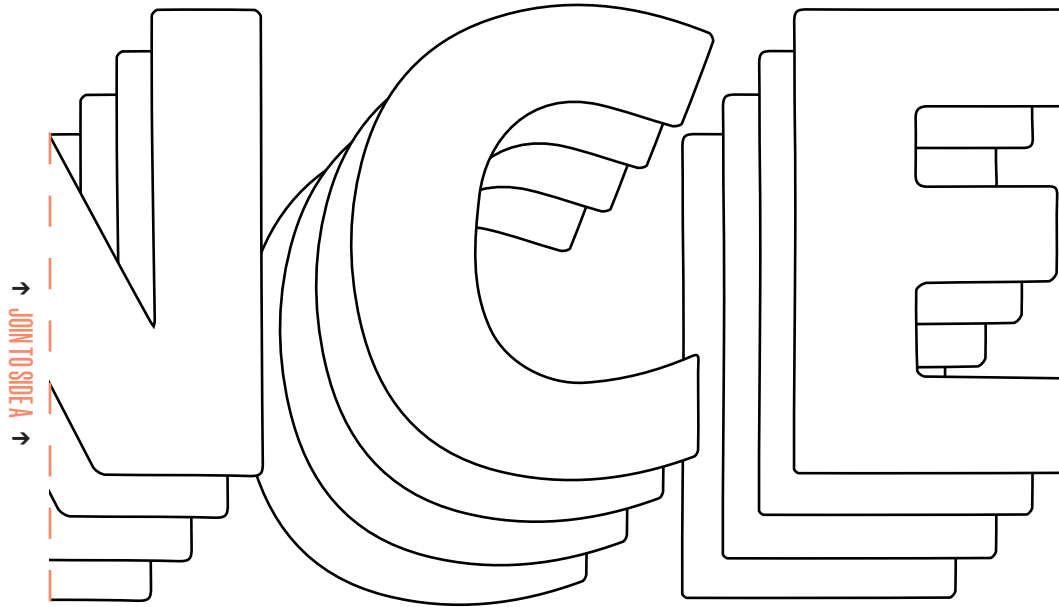


EMBROIDERED LYRICS

BY LUCY FREEMAN

PAGE 26

PHOTOCOPY AT 100%



COPYRIGHT GUIDELINES FOR PROJECTS

We have requested permission from these designers so you can make and sell their projects when adhering to the conditions below. Please credit the designer where appropriate and when requested. *Mollie* encourages creativity, and want to help you make small batches of handmade items to sell. You can handmade as many of our labelled projects as you wish to sell for yourself, a local event or for charity. You cannot sell in shops (online or otherwise) or go into mass production, so you cannot manufacture in large quantities, especially by machine. Selling photocopies of any part of this magazine is prohibited – please respect one another’s copyright. All toys for sale in the UK must meet a list of safety requirements, set out in the Toy (Safety) Regulations 2011. To prove the requirements are met, all toys should carry a CE Mark – a declaration by the maker that a toy is safe. In order to use the CE mark, you must check your products meet the requirements under the Regulations. If you’re using one of our patterns to make items that appeal to children under 14, please take the necessary steps to comply with legislation. Visit www.gov.uk/ce-marking or visit shop.conformance.co.uk to find out about self-certification packs.



PAINTED SIDEBORD

BY MARCIE K

PAGE 46

PHOTOCOPY AT 100%



COPYRIGHT GUIDELINES FOR PROJECTS

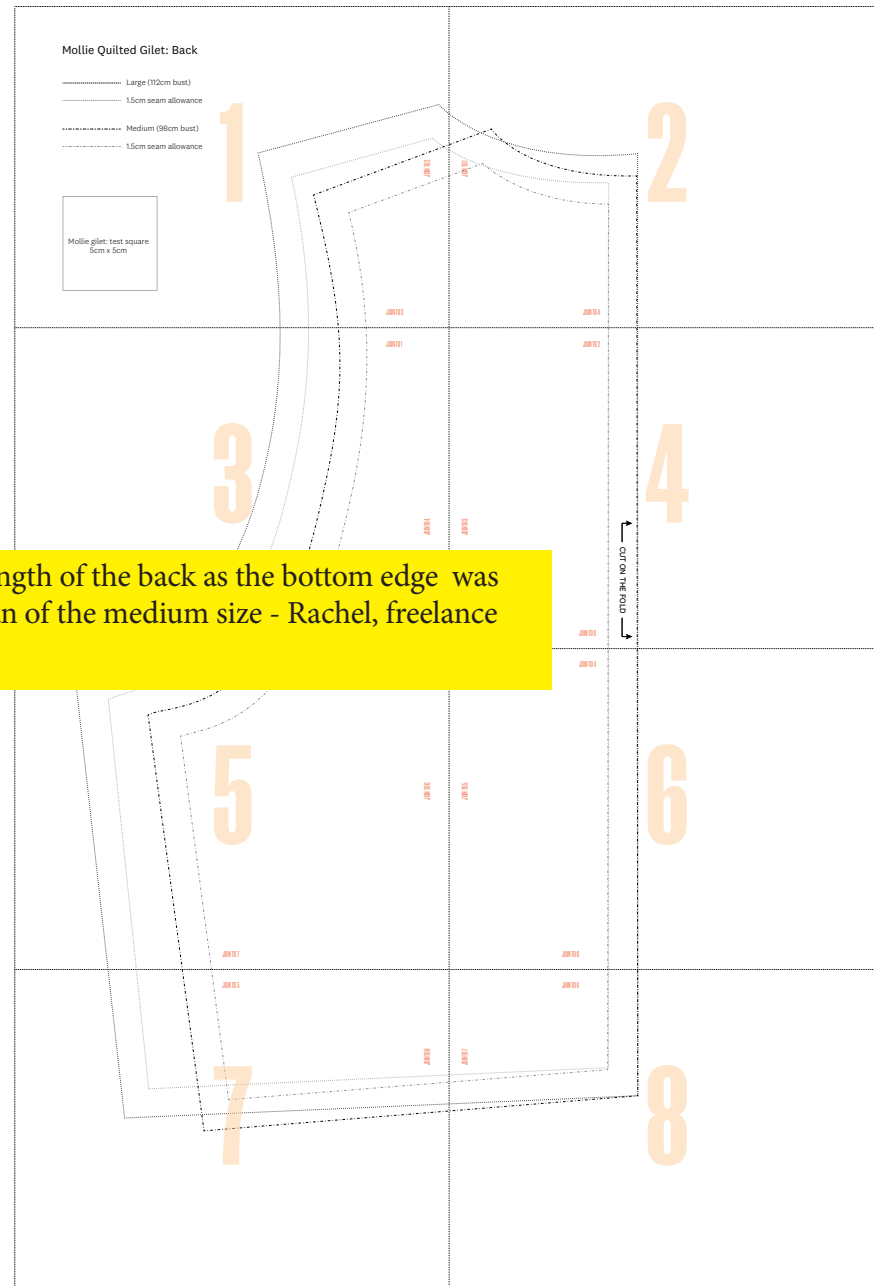
We have requested permission from these designers so you can make and sell their projects when adhering to the conditions below. Please credit the designer where appropriate and when requested. *Mollie* encourages creativity, and want to help you make small batches of handmade items to sell. You can handmade as many of our labelled projects as you wish to sell for yourself, a local event or for charity. You cannot sell in shops (online or otherwise) or go into mass production, so you cannot manufacture in large quantities, especially by machine. Selling photocopies of any part of this magazine is prohibited – please respect one another’s copyright. All toys for sale in the UK must meet a list of safety requirements, set out in the Toy (Safety) Regulations 2011. To prove the requirements are met, all toys should carry a CE Mark – a declaration by the maker that a toy is safe. In order to use the CE mark, you must check your products meet the requirements under the Regulations. If you’re using one of our patterns to make items that appeal to children under 14, please take the necessary steps to comply with legislation. Visit www.gov.uk/ce-marking or visit shop.conformance.co.uk to find out about self-certification packs.



QUILTED GILET
 BY ABBIE SMITH
 PAGE 72
 PHOTOCOPY AT 100%

Size guide

- Large (112cm bust)
- 1.5cm seam allowance
- Medium (98cm bust)
- 1.5cm seam allowance



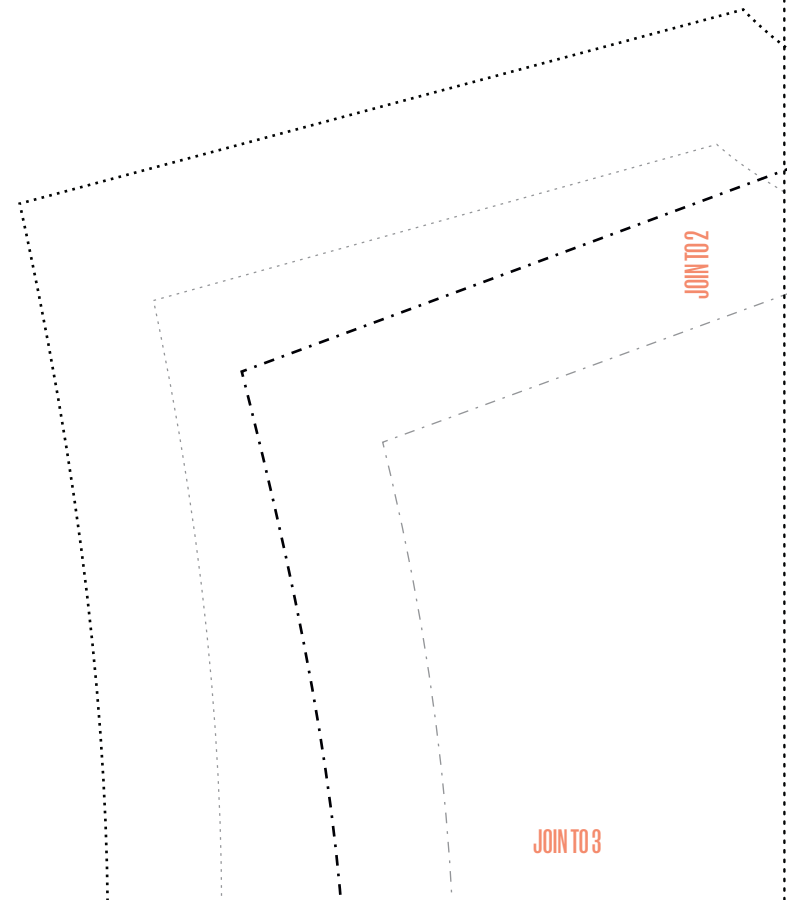
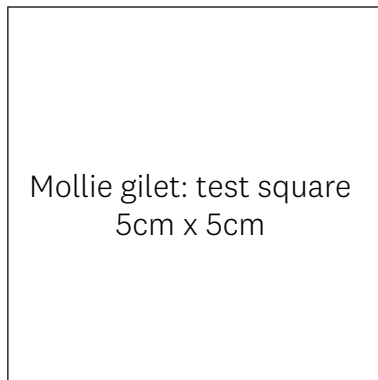
Need to check the length of the back as the bottom edge was missing from the scan of the medium size - Rachel, freelance Art

COPYRIGHT GUIDELINES FOR PROJECTS

We have requested permission from these designers so you can make and sell their projects when adhering to the conditions below. Please credit the designer where appropriate and when requested. *Mollie* encourages creativity, and want to help you make small batches of handmade items to sell. You can handmade as many of our labelled projects as you wish to sell for yourself, a local event or for charity. You cannot sell in shops (online or otherwise) or go into mass production, so you cannot manufacture in large quantities, especially by machine. Selling photocopies of any part of this magazine is prohibited – please respect one another’s copyright. All toys for sale in the UK must meet a list of safety requirements, set out in the Toy (Safety) Regulations 2011. To prove the requirements are met, all toys should carry a CE Mark – a declaration by the maker that a toy is safe. In order to use the CE mark, you must check your products meet the requirements under the Regulations. If you’re using one of our patterns to make items that appeal to children under 14, please take the necessary steps to comply with legislation. Visit www.gov.uk/ce-marking or visit shop.conformance.co.uk to find out about self-certification packs.

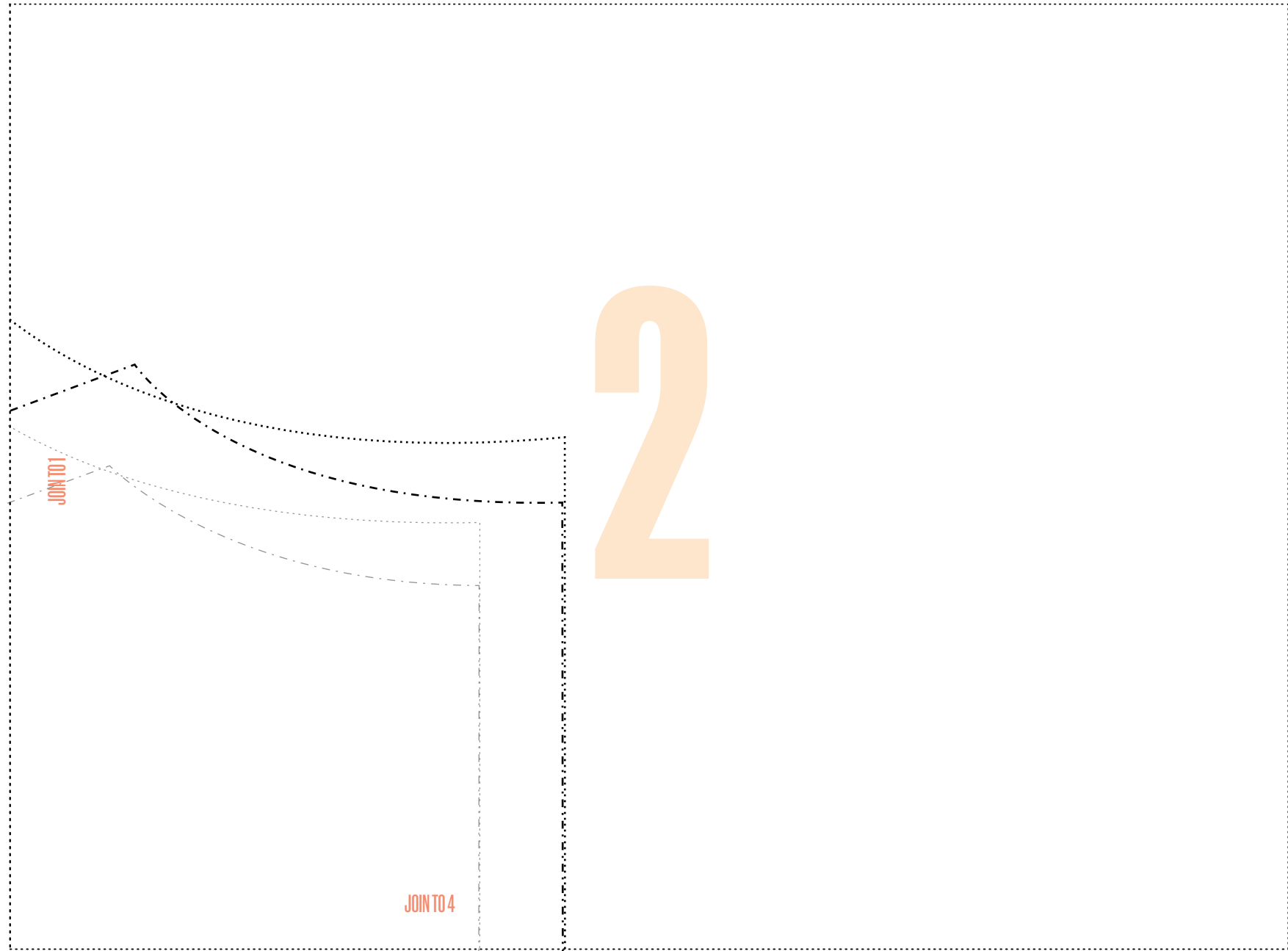
Mollie Quilted Gilet: Back

- Large (112cm bust)
- 1.5cm seam allowance
- - - - - Medium (98cm bust)
- - - - - 1.5cm seam allowance



COPYRIGHT GUIDELINES FOR PROJECTS

We have requested permission from these designers so you can make and sell their projects when adhering to the conditions below. Please credit the designer where appropriate and when requested. *Mollie* encourages creativity, and want to help you make small batches of handmade items to sell. You can handmake as many of our labelled projects as you wish to sell for yourself, a local event or for charity. You cannot sell in shops (online or otherwise) or go into mass production, so you cannot manufacture in large quantities, especially by machine. Selling photocopies of any part of this magazine is prohibited – please respect one another’s copyright. All toys for sale in the UK must meet a list of safety requirements, set out in the Toy (Safety) Regulations 2011. To prove the requirements are met, all toys should carry a CE Mark – a declaration by the maker that a toy is safe. In order to use the CE mark, you must check your products meet the requirements under the Regulations. If you’re using one of our patterns to make items that appeal to children under 14, please take the necessary steps to comply with legislation. Visit www.gov.uk/ce-marking or visit shop.conformance.co.uk to find out about self-certification packs.

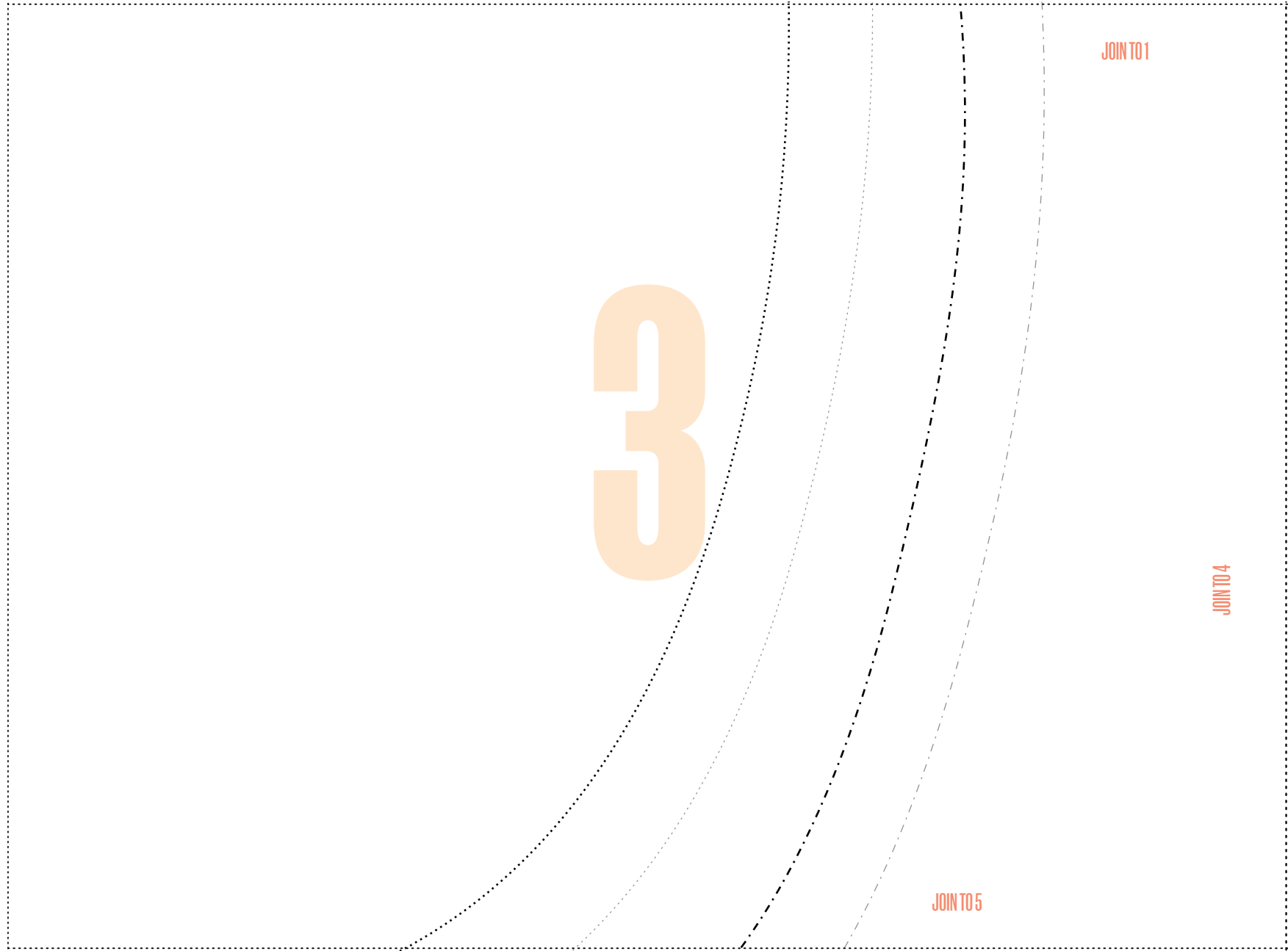


COPYRIGHT GUIDELINES FOR PROJECTS

We have requested permission from these designers so you can make and sell their projects when adhering to the conditions below. Please credit the designer where appropriate and when requested. *Mollie* encourages creativity, and want to help you make small batches of handmade items to sell. You can handmake as many of our labelled projects as you wish to sell for yourself, a local event or for charity. You cannot sell in shops (online or otherwise) or go into mass production, so you cannot manufacture in large quantities, especially by machine. Selling photocopies of any part of this magazine is prohibited – please respect one another’s copyright. All toys for sale in the UK must meet a list of safety requirements, set out in the Toy (Safety) Regulations 2011. To prove the requirements are met, all toys should carry a CE Mark – a declaration by the maker that a toy is safe. In order to use the CE mark, you must check your products meet the requirements under the Regulations. If you’re using one of our patterns to make items that appeal to children under 14, please take the necessary steps to comply with legislation. Visit www.gov.uk/ce-marking or visit shop.conformance.co.uk to find out about self-certification packs.

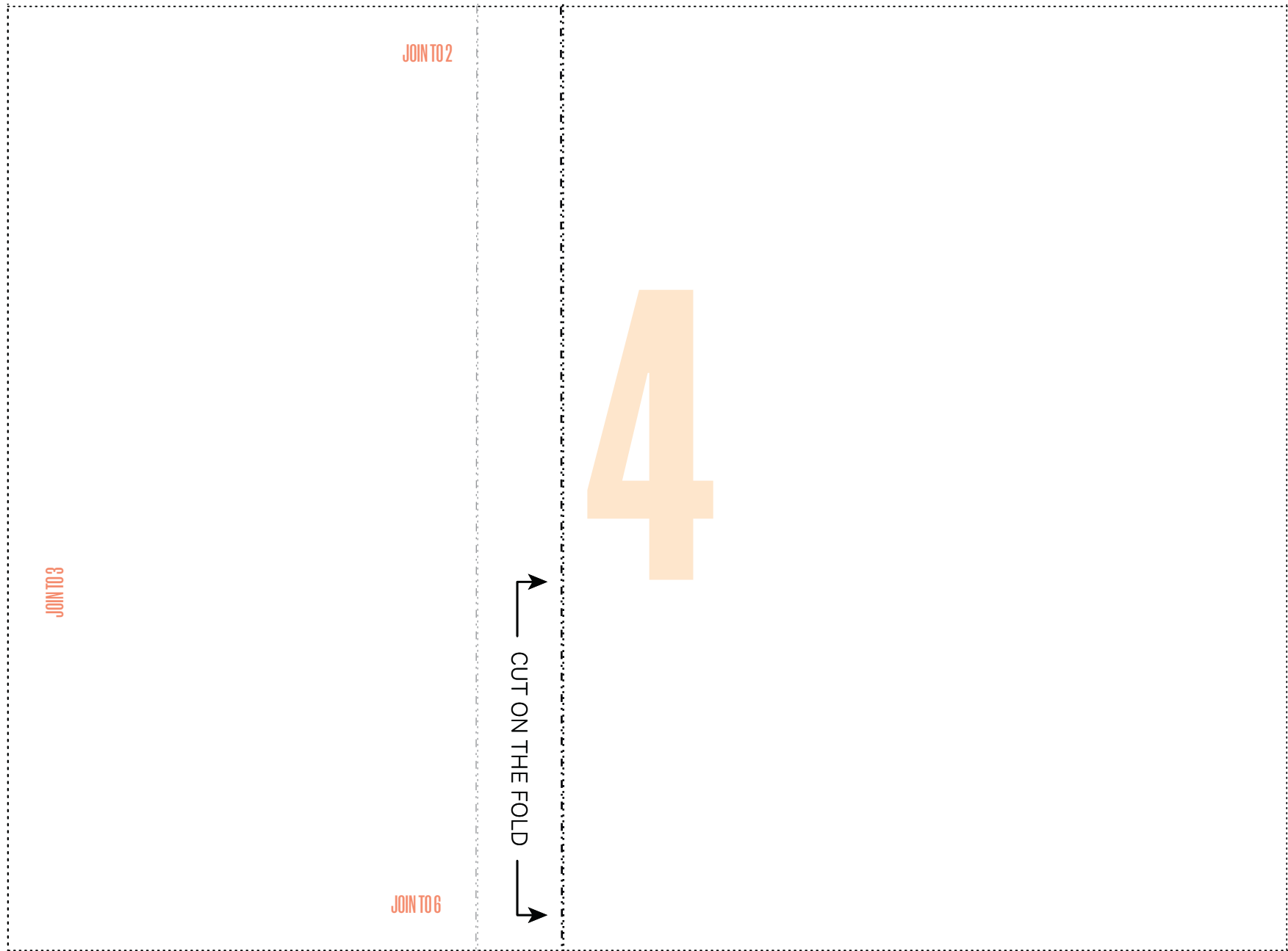
QUILTED GILET: BACK

CUT ALONG DOTTED LINE TO ASSEMBLE PATTERN



COPYRIGHT GUIDELINES FOR PROJECTS

We have requested permission from these designers so you can make and sell their projects when adhering to the conditions below. Please credit the designer where appropriate and when requested. *Mollie* encourages creativity, and want to help you make small batches of handmade items to sell. You can handmake as many of our labelled projects as you wish to sell for yourself, a local event or for charity. You cannot sell in shops (online or otherwise) or go into mass production, so you cannot manufacture in large quantities, especially by machine. Selling photocopies of any part of this magazine is prohibited – please respect one another’s copyright. All toys for sale in the UK must meet a list of safety requirements, set out in the Toy (Safety) Regulations 2011. To prove the requirements are met, all toys should carry a CE Mark – a declaration by the maker that a toy is safe. In order to use the CE mark, you must check your products meet the requirements under the Regulations. If you’re using one of our patterns to make items that appeal to children under 14, please take the necessary steps to comply with legislation. Visit www.gov.uk/ce-marking or visit shop.conformance.co.uk to find out about self-certification packs.



COPYRIGHT GUIDELINES FOR PROJECTS

We have requested permission from these designers so you can make and sell their projects when adhering to the conditions below. Please credit the designer where appropriate and when requested. *Mollie* encourages creativity, and want to help you make small batches of handmade items to sell. You can handmade as many of our labelled projects as you wish to sell for yourself, a local event or for charity. You cannot sell in shops (online or otherwise) or go into mass production, so you cannot manufacture in large quantities, especially by machine. Selling photocopies of any part of this magazine is prohibited – please respect one another’s copyright. All toys for sale in the UK must meet a list of safety requirements, set out in the Toy (Safety) Regulations 2011. To prove the requirements are met, all toys should carry a CE Mark – a declaration by the maker that a toy is safe. In order to use the CE mark, you must check your products meet the requirements under the Regulations. If you’re using one of our patterns to make items that appeal to children under 14, please take the necessary steps to comply with legislation. Visit www.gov.uk/ce-marking or visit shop.conformance.co.uk to find out about self-certification packs.

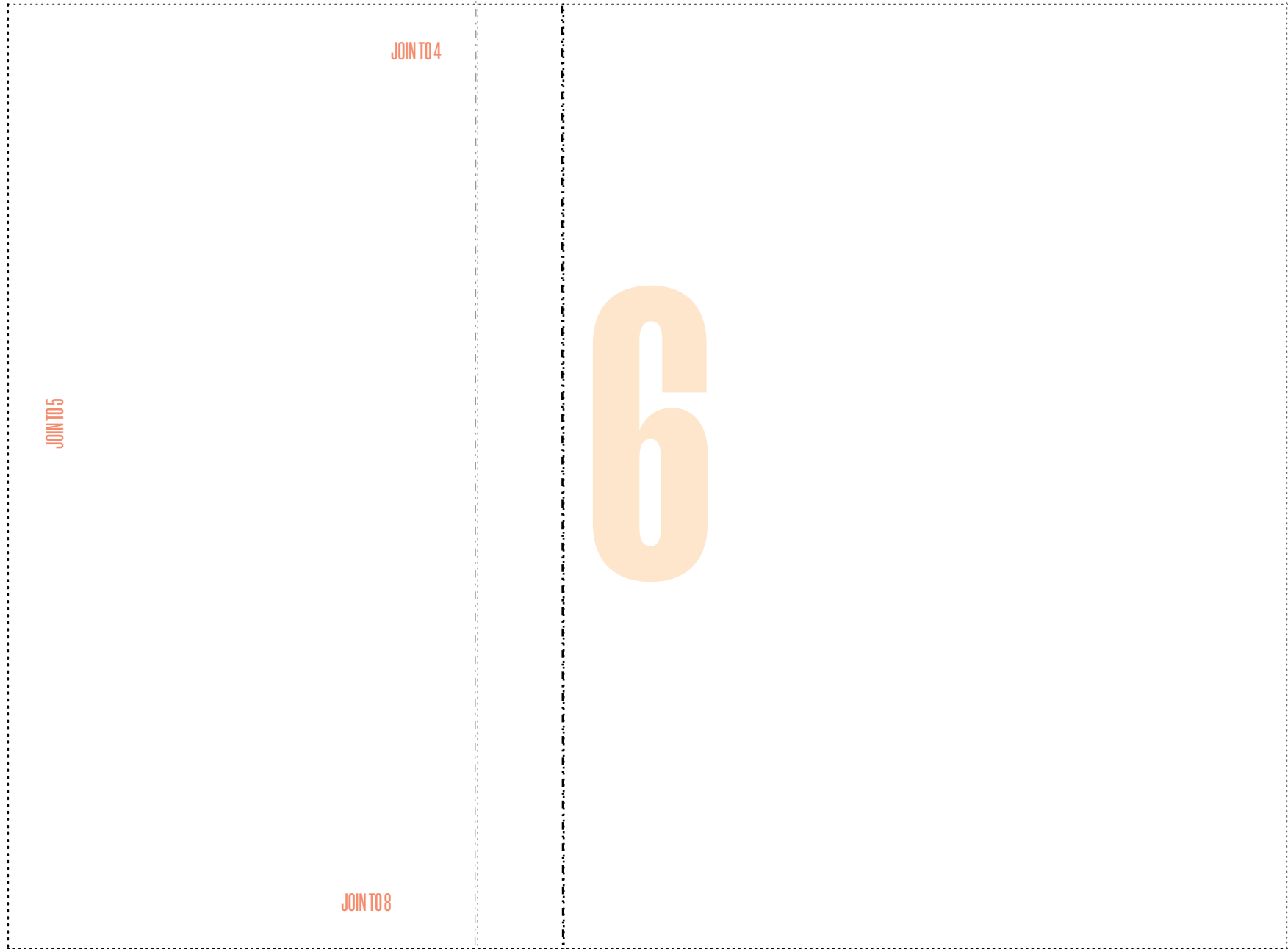
QUILTED GILET: BACK

CUT ALONG DOTTED LINE TO ASSEMBLE PATTERN



COPYRIGHT GUIDELINES FOR PROJECTS

We have requested permission from these designers so you can make and sell their projects when adhering to the conditions below. Please credit the designer where appropriate and when requested. *Mollie* encourages creativity, and want to help you make small batches of handmade items to sell. You can handmade as many of our labelled projects as you wish to sell for yourself, a local event or for charity. You cannot sell in shops (online or otherwise) or go into mass production, so you cannot manufacture in large quantities, especially by machine. Selling photocopies of any part of this magazine is prohibited – please respect one another’s copyright. All toys for sale in the UK must meet a list of safety requirements, set out in the Toy (Safety) Regulations 2011. To prove the requirements are met, all toys should carry a CE Mark – a declaration by the maker that a toy is safe. In order to use the CE mark, you must check your products meet the requirements under the Regulations. If you’re using one of our patterns to make items that appeal to children under 14, please take the necessary steps to comply with legislation. Visit www.gov.uk/ce-marking or visit shop.conformance.co.uk to find out about self-certification packs.

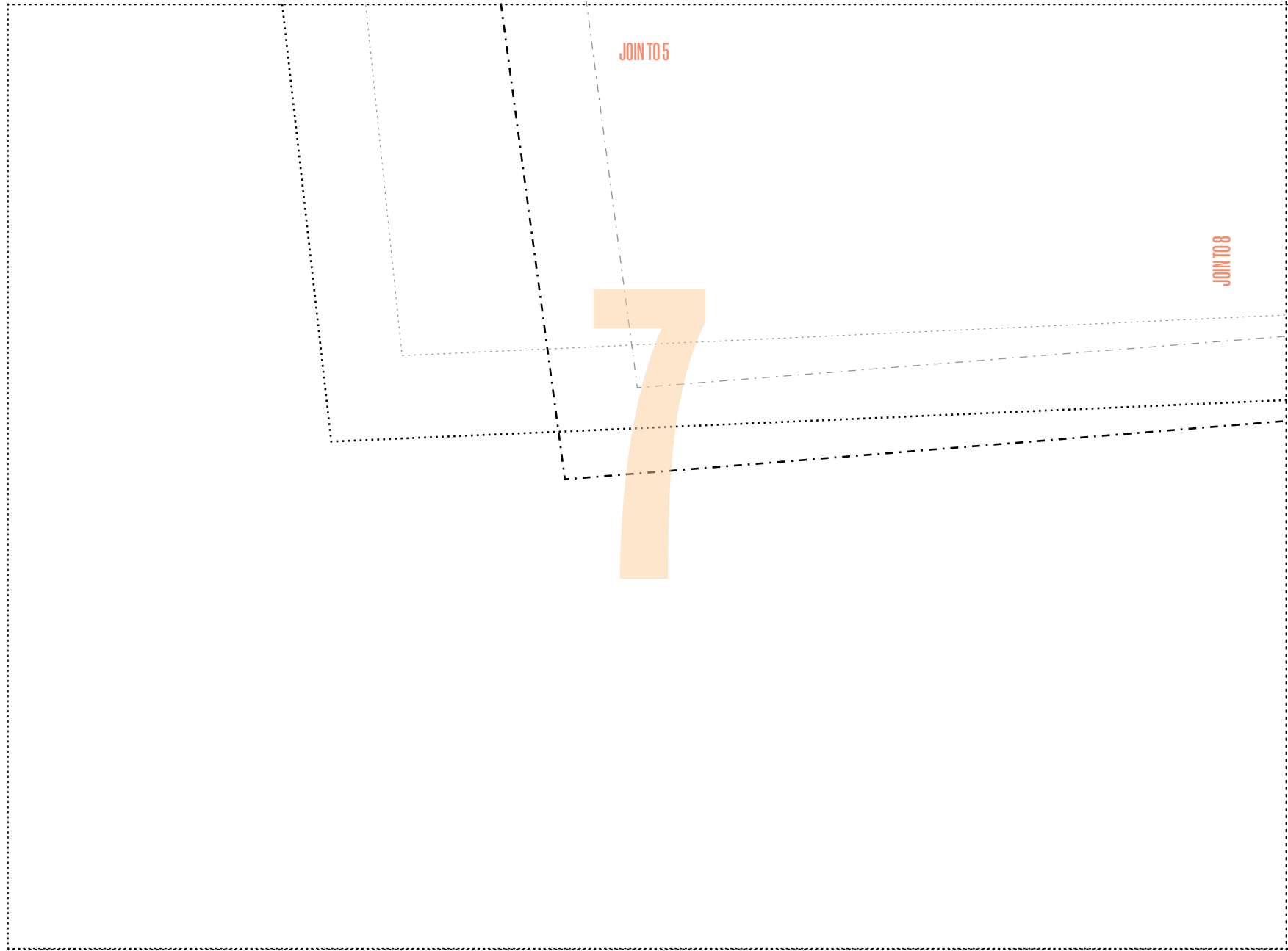


COPYRIGHT GUIDELINES FOR PROJECTS

We have requested permission from these designers so you can make and sell their projects when adhering to the conditions below. Please credit the designer where appropriate and when requested. *Mollie* encourages creativity, and want to help you make small batches of handmade items to sell. You can handmake as many of our labelled projects as you wish to sell for yourself, a local event or for charity. You cannot sell in shops (online or otherwise) or go into mass production, so you cannot manufacture in large quantities, especially by machine. Selling photocopies of any part of this magazine is prohibited – please respect one another’s copyright. All toys for sale in the UK must meet a list of safety requirements, set out in the Toy (Safety) Regulations 2011. To prove the requirements are met, all toys should carry a CE Mark – a declaration by the maker that a toy is safe. In order to use the CE mark, you must check your products meet the requirements under the Regulations. If you’re using one of our patterns to make items that appeal to children under 14, please take the necessary steps to comply with legislation. Visit www.gov.uk/ce-marking or visit shop.conformance.co.uk to find out about self-certification packs.

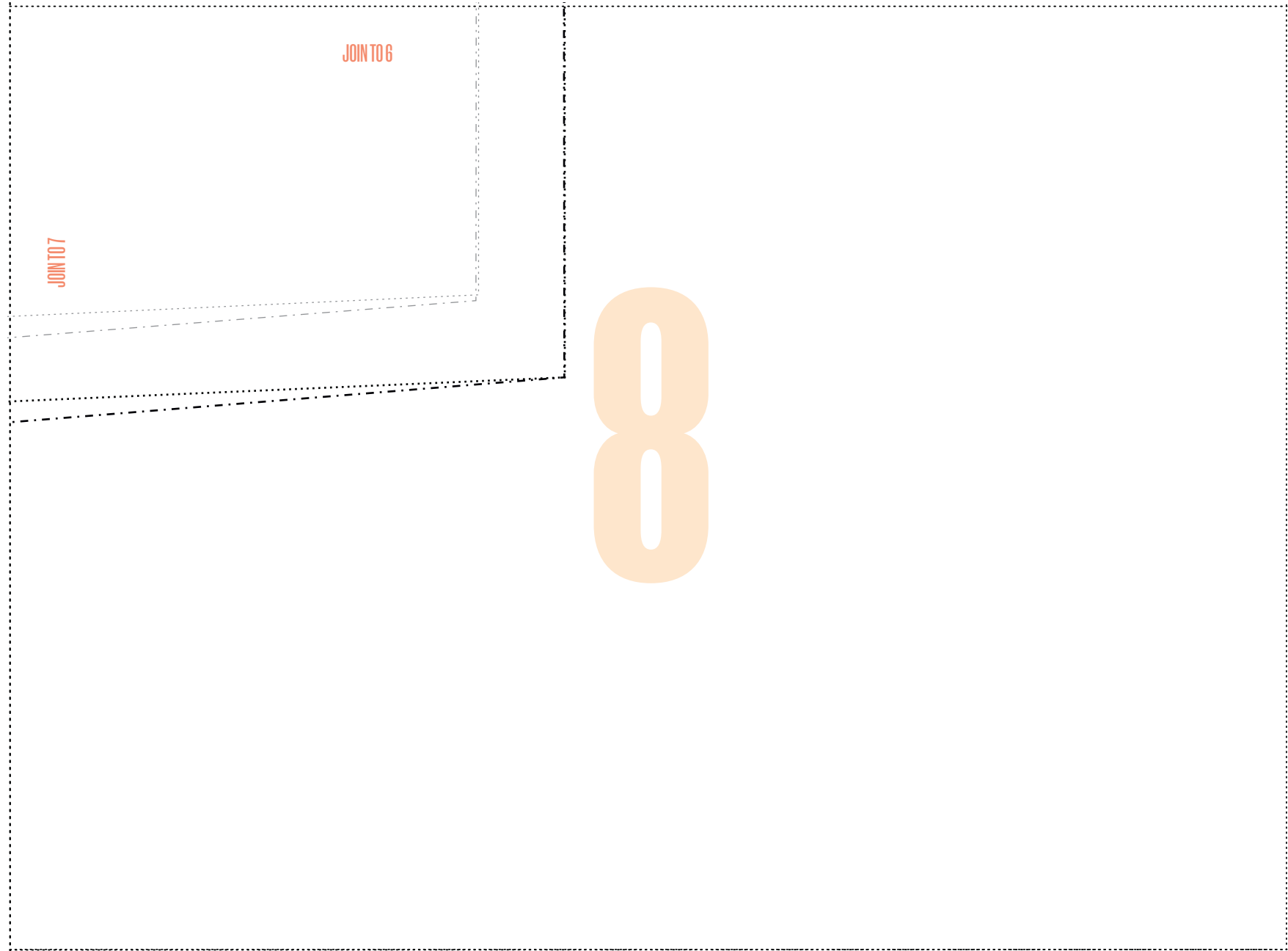
QUILTED GILET: BACK

CUT ALONG DOTTED LINE TO ASSEMBLE PATTERN



COPYRIGHT GUIDELINES FOR PROJECTS

We have requested permission from these designers so you can make and sell their projects when adhering to the conditions below. Please credit the designer where appropriate and when requested. *Mollie* encourages creativity, and want to help you make small batches of handmade items to sell. You can handmake as many of our labelled projects as you wish to sell for yourself, a local event or for charity. You cannot sell in shops (online or otherwise) or go into mass production, so you cannot manufacture in large quantities, especially by machine. Selling photocopies of any part of this magazine is prohibited – please respect one another’s copyright. All toys for sale in the UK must meet a list of safety requirements, set out in the Toy (Safety) Regulations 2011. To prove the requirements are met, all toys should carry a CE Mark – a declaration by the maker that a toy is safe. In order to use the CE mark, you must check your products meet the requirements under the Regulations. If you’re using one of our patterns to make items that appeal to children under 14, please take the necessary steps to comply with legislation. Visit www.gov.uk/ce-marking or visit shop.conformance.co.uk to find out about self-certification packs.



COPYRIGHT GUIDELINES FOR PROJECTS

We have requested permission from these designers so you can make and sell their projects when adhering to the conditions below. Please credit the designer where appropriate and when requested. *Mollie* encourages creativity, and want to help you make small batches of handmade items to sell. You can handmake as many of our labelled projects as you wish to sell for yourself, a local event or for charity. You cannot sell in shops (online or otherwise) or go into mass production, so you cannot manufacture in large quantities, especially by machine. Selling photocopies of any part of this magazine is prohibited – please respect one another’s copyright. All toys for sale in the UK must meet a list of safety requirements, set out in the Toy (Safety) Regulations 2011. To prove the requirements are met, all toys should carry a CE Mark – a declaration by the maker that a toy is safe. In order to use the CE mark, you must check your products meet the requirements under the Regulations. If you’re using one of our patterns to make items that appeal to children under 14, please take the necessary steps to comply with legislation. Visit www.gov.uk/ce-marking or visit shop.conformance.co.uk to find out about self-certification packs.



QUILTED GILET: FRONT LEFT

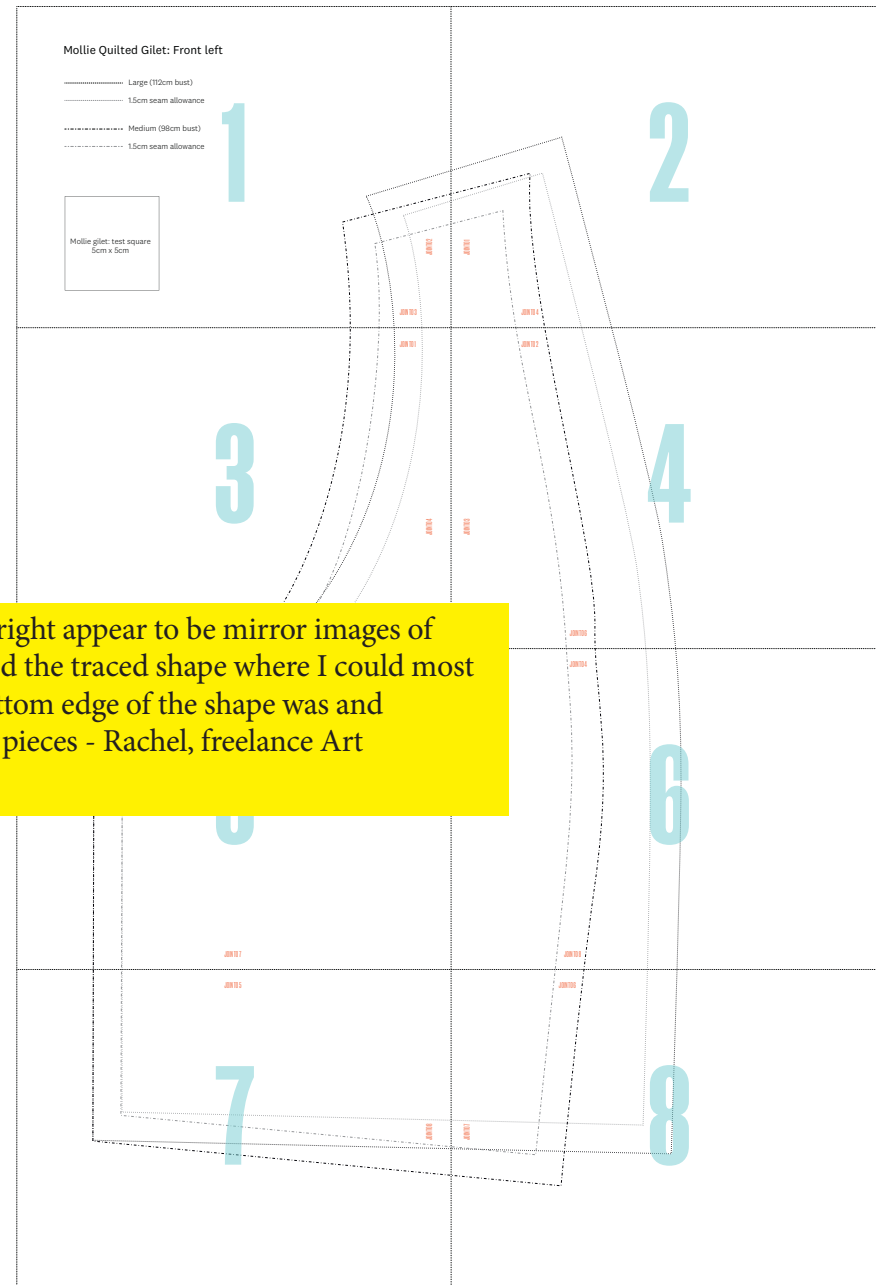
BY ABBIE SMITH

PAGE 72

PHOTOCOPY AT 100%

Size guide

- Large (112cm bust)
- 1.5cm seam allowance
- Medium (98cm bust)
- 1.5cm seam allowance

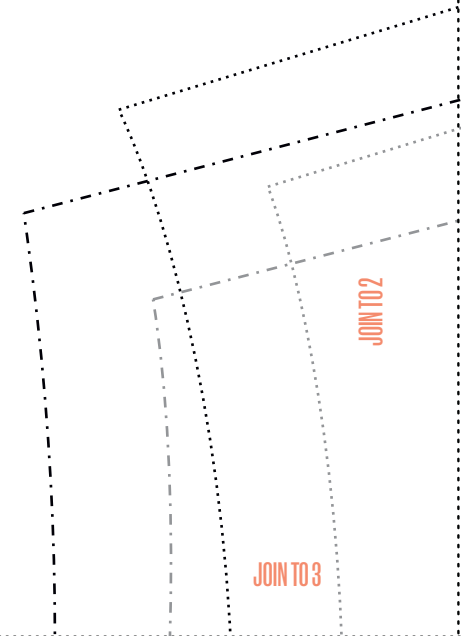
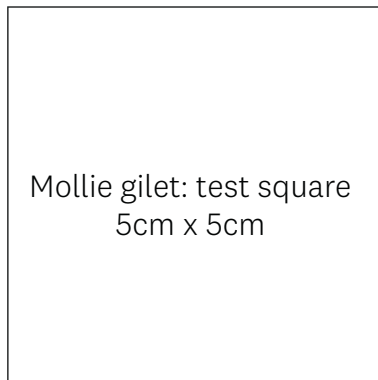


COPYRIGHT GUIDELINES FOR PROJECTS

We have requested permission from these designers so you can make and sell their projects when adhering to the conditions below. Please credit the designer where appropriate and when requested. *Mollie* encourages creativity, and want to help you make small batches of handmade items to sell. You can handmade as many of our labelled projects as you wish to sell for yourself, a local event or for charity. You cannot sell in shops (online or otherwise) or go into mass production, so you cannot manufacture in large quantities, especially by machine. Selling photocopies of any part of this magazine is prohibited – please respect one another’s copyright. All toys for sale in the UK must meet a list of safety requirements, set out in the Toy (Safety) Regulations 2011. To prove the requirements are met, all toys should carry a CE Mark – a declaration by the maker that a toy is safe. In order to use the CE mark, you must check your products meet the requirements under the Regulations. If you’re using one of our patterns to make items that appeal to children under 14, please take the necessary steps to comply with legislation. Visit www.gov.uk/ce-marking or visit shop.conformance.co.uk to find out about self-certification packs.

Mollie Quilted Gilet: Front left

- Large (112cm bust)
- 1.5cm seam allowance
- - - - - Medium (98cm bust)
- - - - - 1.5cm seam allowance

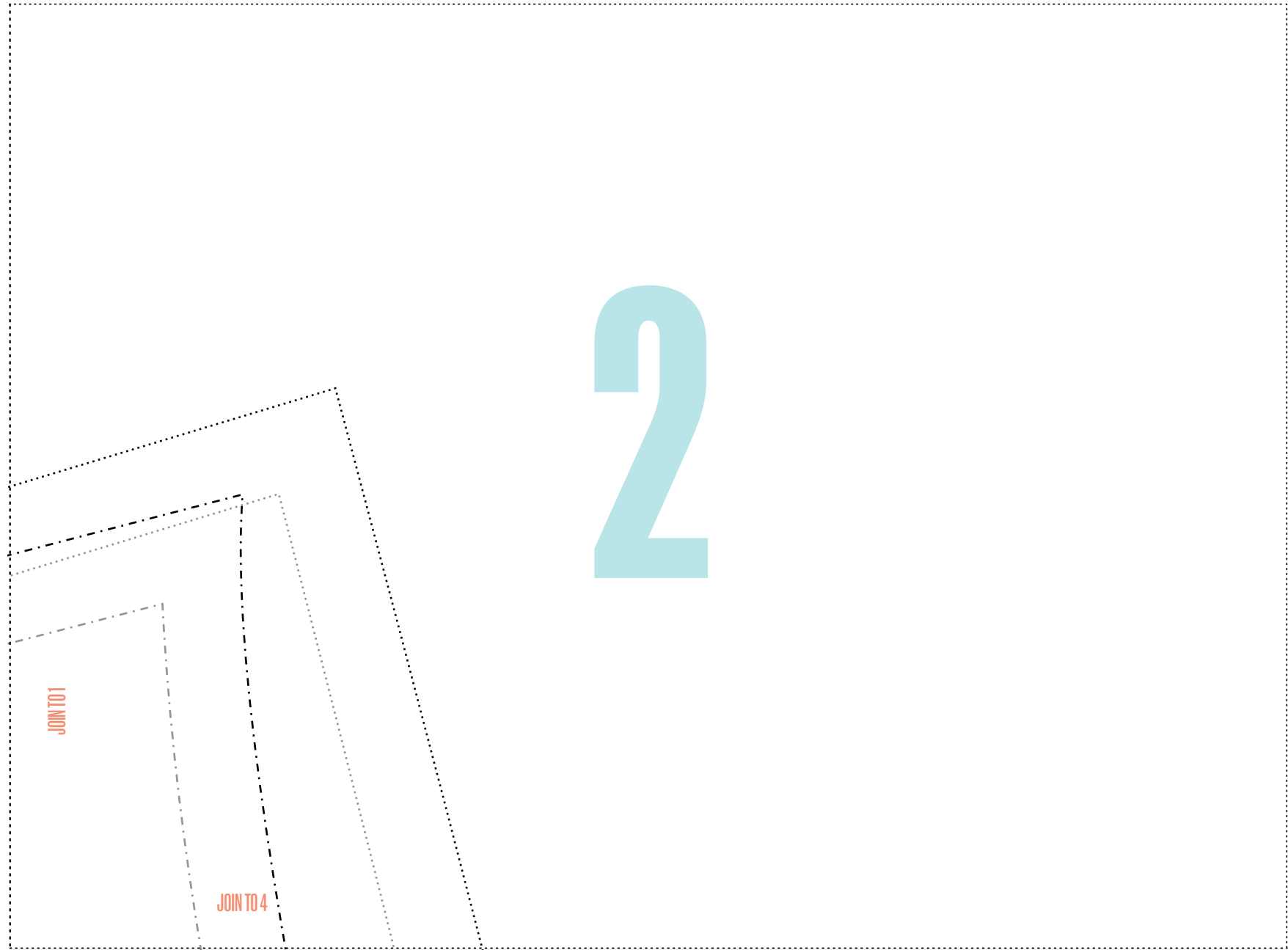


COPYRIGHT GUIDELINES FOR PROJECTS

We have requested permission from these designers so you can make and sell their projects when adhering to the conditions below. Please credit the designer where appropriate and when requested. *Mollie* encourages creativity, and want to help you make small batches of handmade items to sell. You can handmade as many of our labelled projects as you wish to sell for yourself, a local event or for charity. You cannot sell in shops (online or otherwise) or go into mass production, so you cannot manufacture in large quantities, especially by machine. Selling photocopies of any part of this magazine is prohibited – please respect one another’s copyright. All toys for sale in the UK must meet a list of safety requirements, set out in the Toy (Safety) Regulations 2011. To prove the requirements are met, all toys should carry a CE Mark – a declaration by the maker that a toy is safe. In order to use the CE mark, you must check your products meet the requirements under the Regulations. If you’re using one of our patterns to make items that appeal to children under 14, please take the necessary steps to comply with legislation. Visit www.gov.uk/ce-marking or visit shop.conformance.co.uk to find out about self-certification packs.

QUILTED GILET: FRONT LEFT

CUT ALONG DOTTED LINE TO ASSEMBLE PATTERN

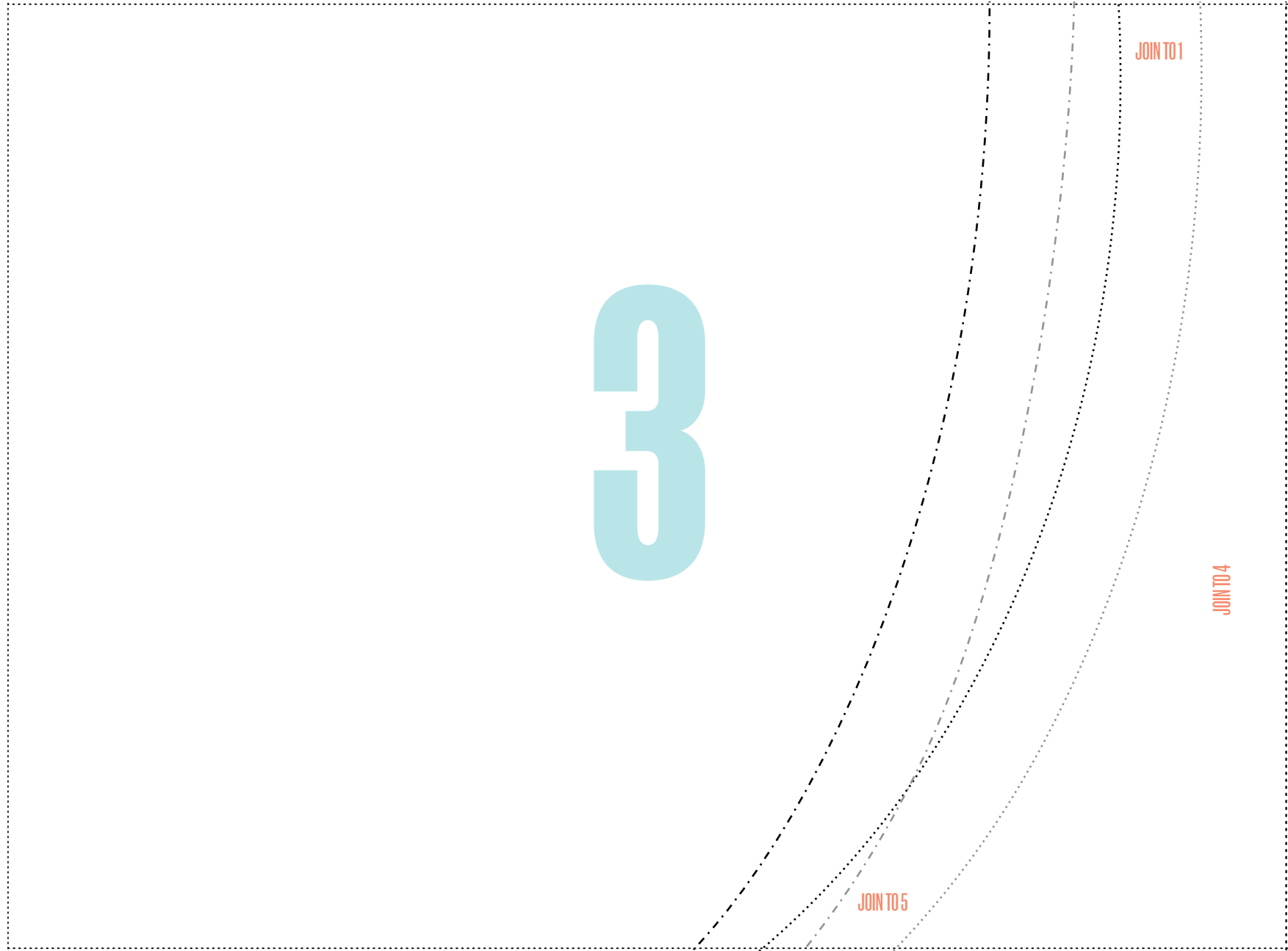


COPYRIGHT GUIDELINES FOR PROJECTS

We have requested permission from these designers so you can make and sell their projects when adhering to the conditions below. Please credit the designer where appropriate and when requested. *Mollie* encourages creativity, and want to help you make small batches of handmade items to sell. You can handmake as many of our labelled projects as you wish to sell for yourself, a local event or for charity. You cannot sell in shops (online or otherwise) or go into mass production, so you cannot manufacture in large quantities, especially by machine. Selling photocopies of any part of this magazine is prohibited – please respect one another’s copyright. All toys for sale in the UK must meet a list of safety requirements, set out in the Toy (Safety) Regulations 2011. To prove the requirements are met, all toys should carry a CE Mark – a declaration by the maker that a toy is safe. In order to use the CE mark, you must check your products meet the requirements under the Regulations. If you’re using one of our patterns to make items that appeal to children under 14, please take the necessary steps to comply with legislation. Visit www.gov.uk/ce-marking or visit shop.conformance.co.uk to find out about self-certification packs.

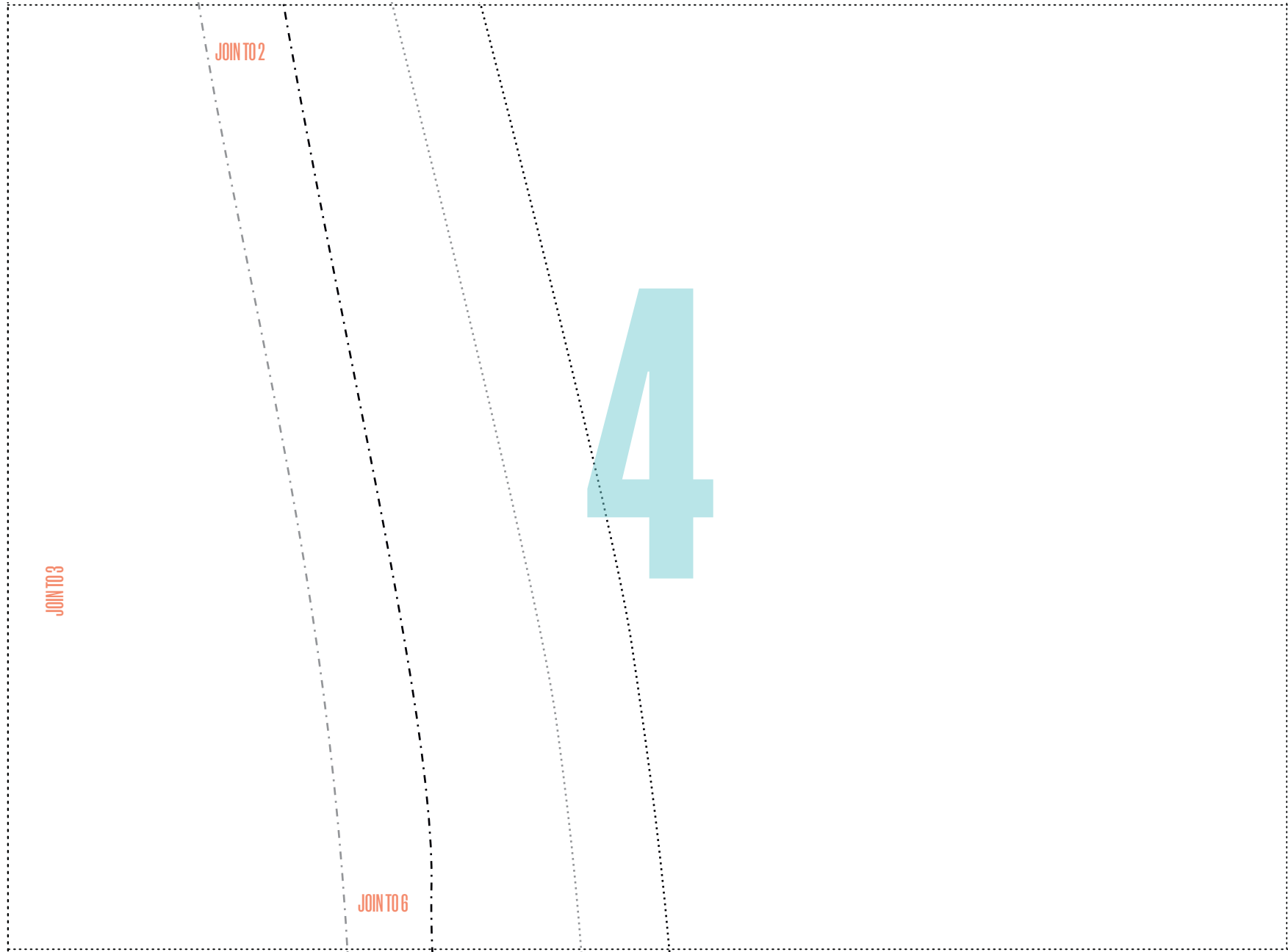
QUILTED GILET: FRONT LEFT

CUT ALONG DOTTED LINE TO ASSEMBLE PATTERN



COPYRIGHT GUIDELINES FOR PROJECTS

We have requested permission from these designers so you can make and sell their projects when adhering to the conditions below. Please credit the designer where appropriate and when requested. *Mollie* encourages creativity, and want to help you make small batches of handmade items to sell. You can handmade as many of our labelled projects as you wish to sell for yourself, a local event or for charity. You cannot sell in shops (online or otherwise) or go into mass production, so you cannot manufacture in large quantities, especially by machine. Selling photocopies of any part of this magazine is prohibited – please respect one another’s copyright. All toys for sale in the UK must meet a list of safety requirements, set out in the Toy (Safety) Regulations 2011. To prove the requirements are met, all toys should carry a CE Mark – a declaration by the maker that a toy is safe. In order to use the CE mark, you must check your products meet the requirements under the Regulations. If you’re using one of our patterns to make items that appeal to children under 14, please take the necessary steps to comply with legislation. Visit www.gov.uk/ce-marking or visit shop.conformance.co.uk to find out about self-certification packs.

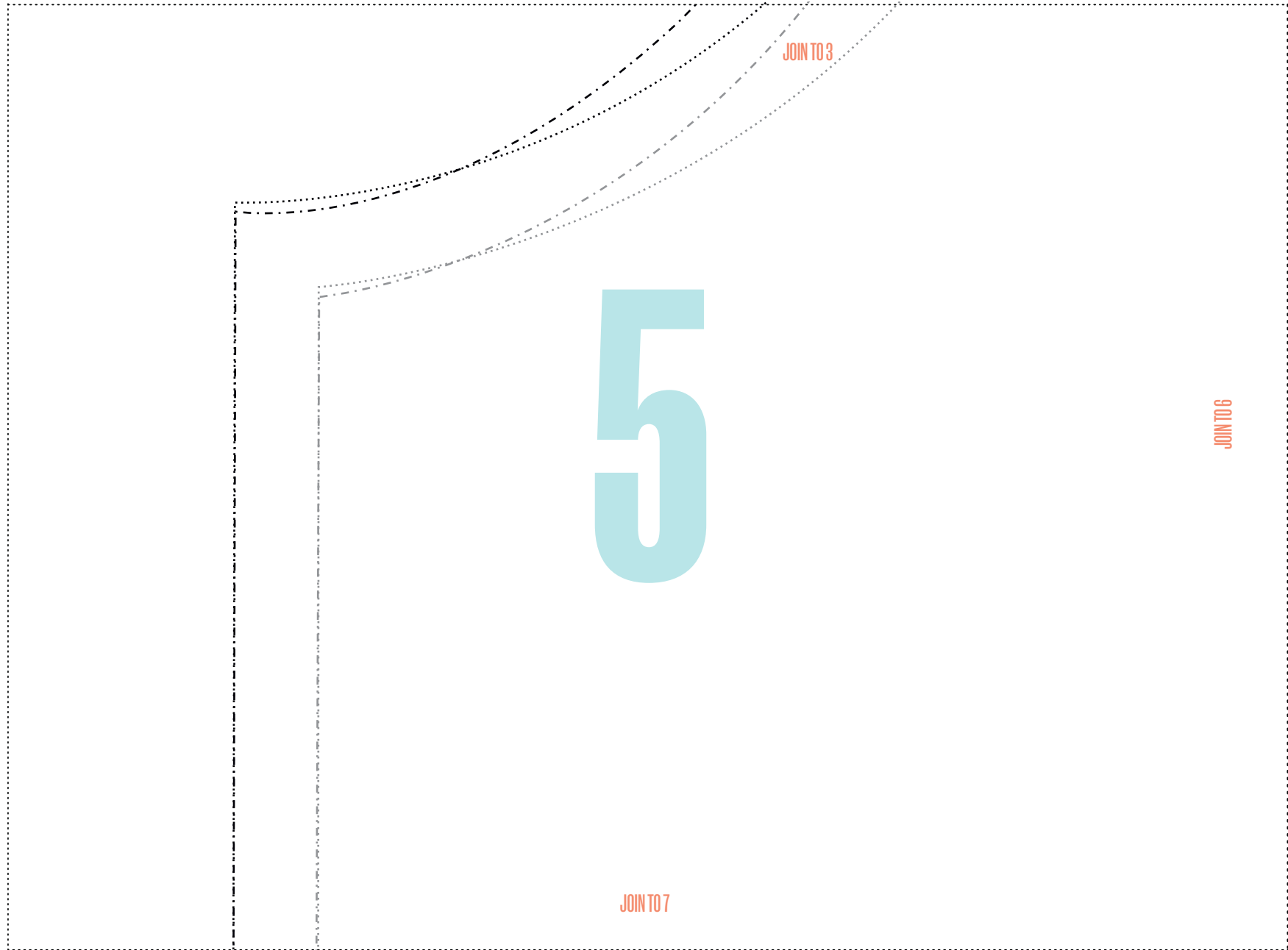


COPYRIGHT GUIDELINES FOR PROJECTS

We have requested permission from these designers so you can make and sell their projects when adhering to the conditions below. Please credit the designer where appropriate and when requested. *Mollie* encourages creativity, and want to help you make small batches of handmade items to sell. You can handmake as many of our labelled projects as you wish to sell for yourself, a local event or for charity. You cannot sell in shops (online or otherwise) or go into mass production, so you cannot manufacture in large quantities, especially by machine. Selling photocopies of any part of this magazine is prohibited – please respect one another’s copyright. All toys for sale in the UK must meet a list of safety requirements, set out in the Toy (Safety) Regulations 2011. To prove the requirements are met, all toys should carry a CE Mark – a declaration by the maker that a toy is safe. In order to use the CE mark, you must check your products meet the requirements under the Regulations. If you’re using one of our patterns to make items that appeal to children under 14, please take the necessary steps to comply with legislation. Visit www.gov.uk/ce-marking or visit shop.conformance.co.uk to find out about self-certification packs.

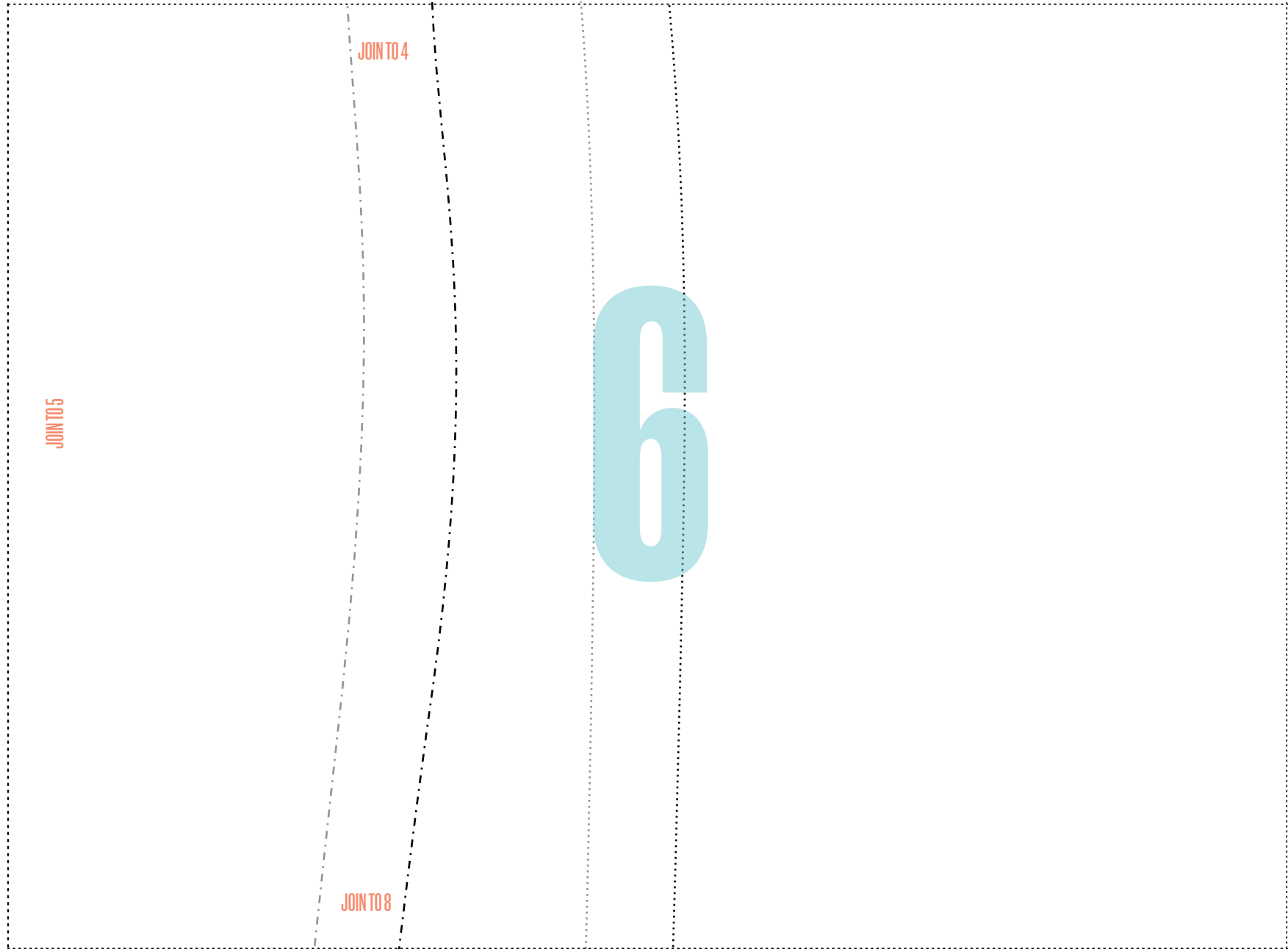
QUILTED GILET: FRONT LEFT

CUT ALONG DOTTED LINE TO ASSEMBLE PATTERN



COPYRIGHT GUIDELINES FOR PROJECTS

We have requested permission from these designers so you can make and sell their projects when adhering to the conditions below. Please credit the designer where appropriate and when requested. *Mollie* encourages creativity, and want to help you make small batches of handmade items to sell. You can handmake as many of our labelled projects as you wish to sell for yourself, a local event or for charity. You cannot sell in shops (online or otherwise) or go into mass production, so you cannot manufacture in large quantities, especially by machine. Selling photocopies of any part of this magazine is prohibited – please respect one another’s copyright. All toys for sale in the UK must meet a list of safety requirements, set out in the Toy (Safety) Regulations 2011. To prove the requirements are met, all toys should carry a CE Mark – a declaration by the maker that a toy is safe. In order to use the CE mark, you must check your products meet the requirements under the Regulations. If you’re using one of our patterns to make items that appeal to children under 14, please take the necessary steps to comply with legislation. Visit www.gov.uk/ce-marking or visit shop.conformance.co.uk to find out about self-certification packs.

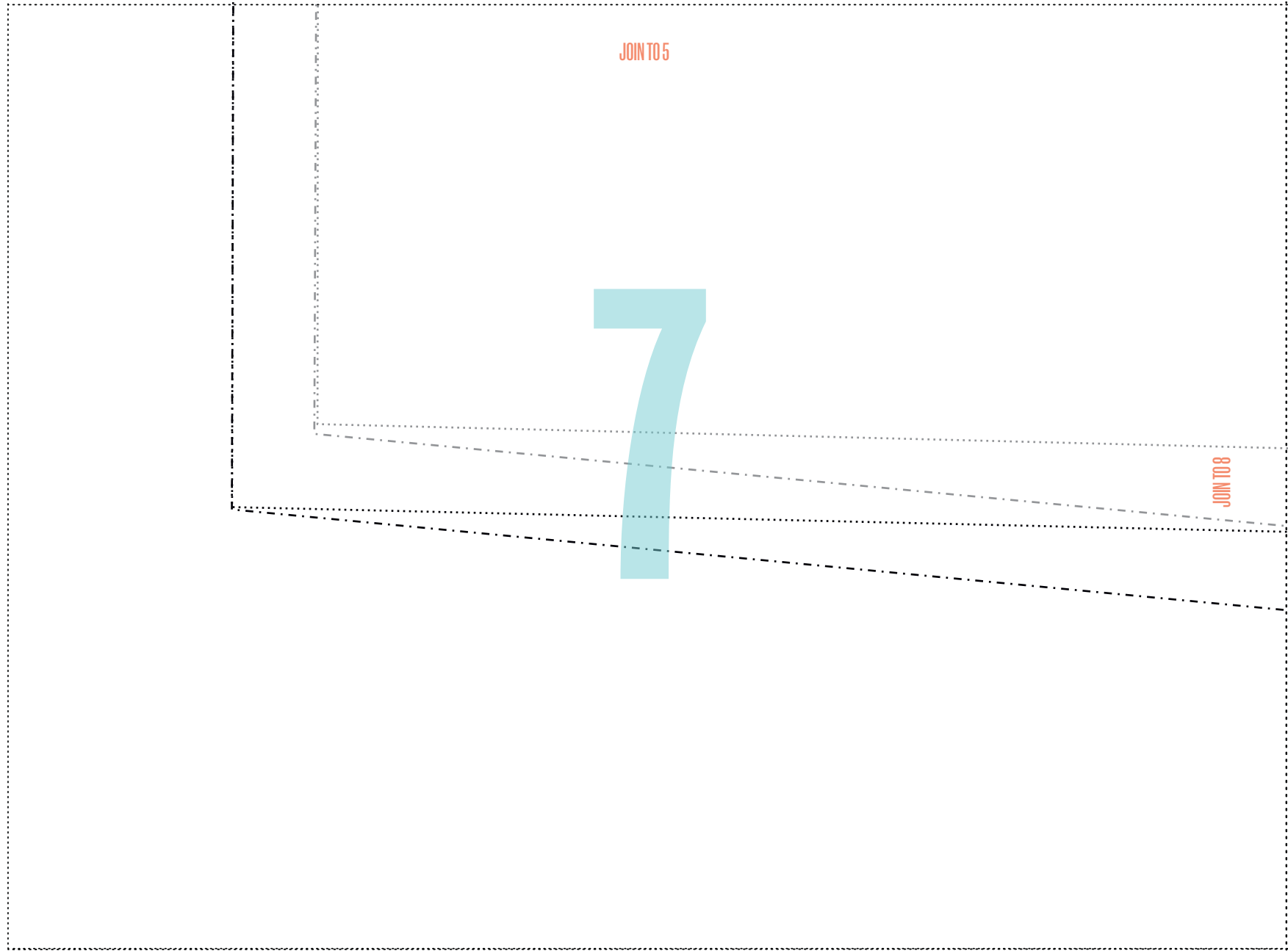


COPYRIGHT GUIDELINES FOR PROJECTS

We have requested permission from these designers so you can make and sell their projects when adhering to the conditions below. Please credit the designer where appropriate and when requested. *Mollie* encourages creativity, and want to help you make small batches of handmade items to sell. You can handmade as many of our labelled projects as you wish to sell for yourself, a local event or for charity. You cannot sell in shops (online or otherwise) or go into mass production, so you cannot manufacture in large quantities, especially by machine. Selling photocopies of any part of this magazine is prohibited – please respect one another’s copyright. All toys for sale in the UK must meet a list of safety requirements, set out in the Toy (Safety) Regulations 2011. To prove the requirements are met, all toys should carry a CE Mark – a declaration by the maker that a toy is safe. In order to use the CE mark, you must check your products meet the requirements under the Regulations. If you’re using one of our patterns to make items that appeal to children under 14, please take the necessary steps to comply with legislation. Visit www.gov.uk/ce-marking or visit shop.conformance.co.uk to find out about self-certification packs.

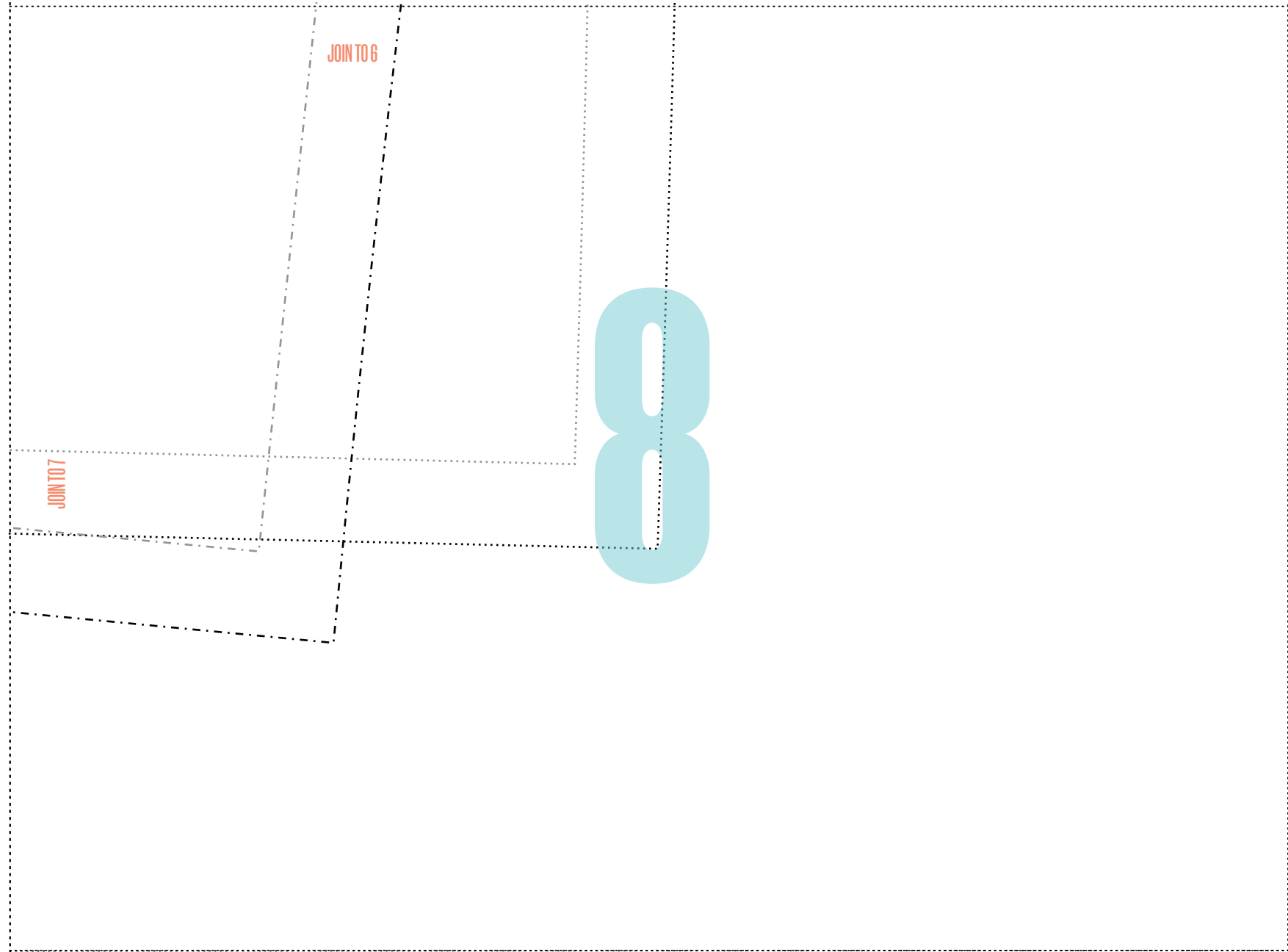
QUILTED GILET: FRONT LEFT

CUT ALONG DOTTED LINE TO ASSEMBLE PATTERN



COPYRIGHT GUIDELINES FOR PROJECTS

We have requested permission from these designers so you can make and sell their projects when adhering to the conditions below. Please credit the designer where appropriate and when requested. *Mollie* encourages creativity, and want to help you make small batches of handmade items to sell. You can handmake as many of our labelled projects as you wish to sell for yourself, a local event or for charity. You cannot sell in shops (online or otherwise) or go into mass production, so you cannot manufacture in large quantities, especially by machine. Selling photocopies of any part of this magazine is prohibited – please respect one another’s copyright. All toys for sale in the UK must meet a list of safety requirements, set out in the Toy (Safety) Regulations 2011. To prove the requirements are met, all toys should carry a CE Mark – a declaration by the maker that a toy is safe. In order to use the CE mark, you must check your products meet the requirements under the Regulations. If you’re using one of our patterns to make items that appeal to children under 14, please take the necessary steps to comply with legislation. Visit www.gov.uk/ce-marking or visit shop.conformance.co.uk to find out about self-certification packs.



COPYRIGHT GUIDELINES FOR PROJECTS

We have requested permission from these designers so you can make and sell their projects when adhering to the conditions below. Please credit the designer where appropriate and when requested. *Mollie* encourages creativity, and want to help you make small batches of handmade items to sell. You can handmade as many of our labelled projects as you wish to sell for yourself, a local event or for charity. You cannot sell in shops (online or otherwise) or go into mass production, so you cannot manufacture in large quantities, especially by machine. Selling photocopies of any part of this magazine is prohibited – please respect one another’s copyright. All toys for sale in the UK must meet a list of safety requirements, set out in the Toy (Safety) Regulations 2011. To prove the requirements are met, all toys should carry a CE Mark – a declaration by the maker that a toy is safe. In order to use the CE mark, you must check your products meet the requirements under the Regulations. If you’re using one of our patterns to make items that appeal to children under 14, please take the necessary steps to comply with legislation. Visit www.gov.uk/ce-marking or visit shop.conformance.co.uk to find out about self-certification packs.



QUILTED GILET: FRONT RIGHT

BY ABBIE SMITH

PAGE 72

PHOTOCOPY AT 100%

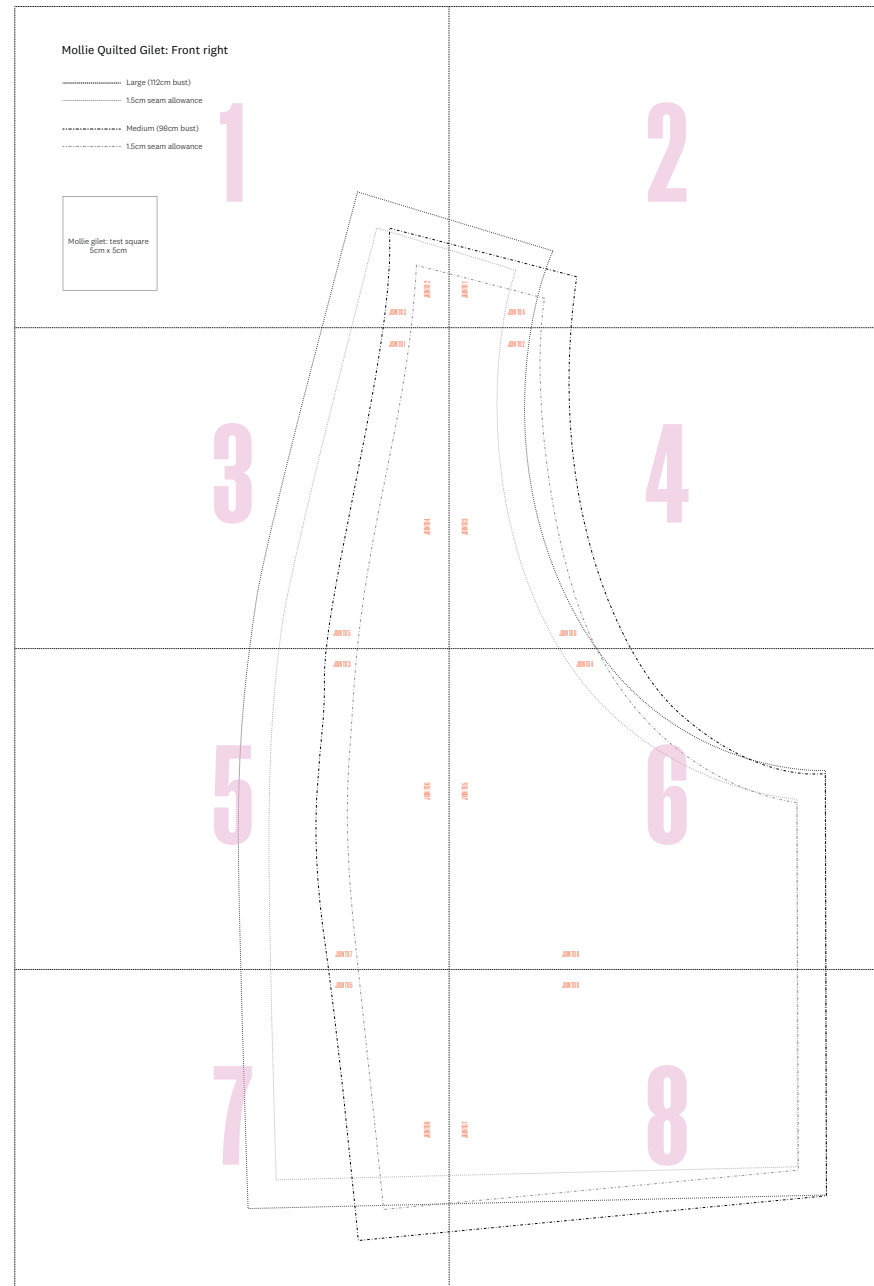
Size guide

..... Large (112cm bust)

..... 1.5cm seam allowance

----- Medium (98cm bust)

----- 1.5cm seam allowance

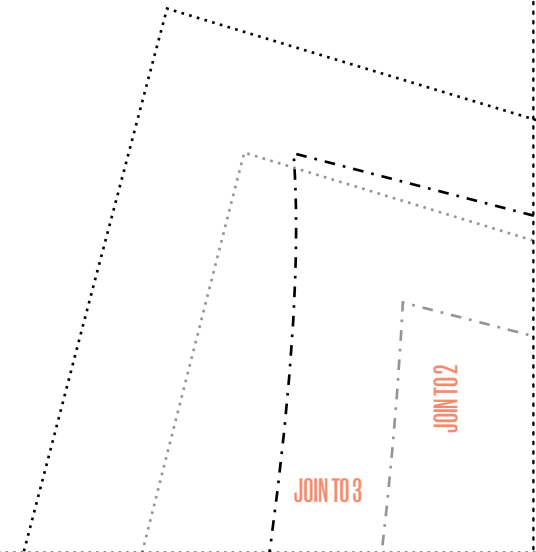
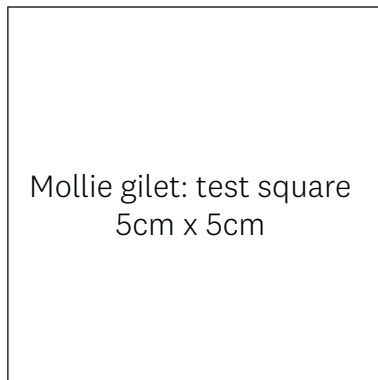


COPYRIGHT GUIDELINES FOR PROJECTS

We have requested permission from these designers so you can make and sell their projects when adhering to the conditions below. Please credit the designer where appropriate and when requested. *Mollie* encourages creativity, and want to help you make small batches of handmade items to sell. You can handmade as many of our labelled projects as you wish to sell for yourself, a local event or for charity. You cannot sell in shops (online or otherwise) or go into mass production, so you cannot manufacture in large quantities, especially by machine. Selling photocopies of any part of this magazine is prohibited – please respect one another’s copyright. All toys for sale in the UK must meet a list of safety requirements, set out in the Toy (Safety) Regulations 2011. To prove the requirements are met, all toys should carry a CE Mark – a declaration by the maker that a toy is safe. In order to use the CE mark, you must check your products meet the requirements under the Regulations. If you’re using one of our patterns to make items that appeal to children under 14, please take the necessary steps to comply with legislation. Visit www.gov.uk/ce-marking or visit shop.conformance.co.uk to find out about self-certification packs.

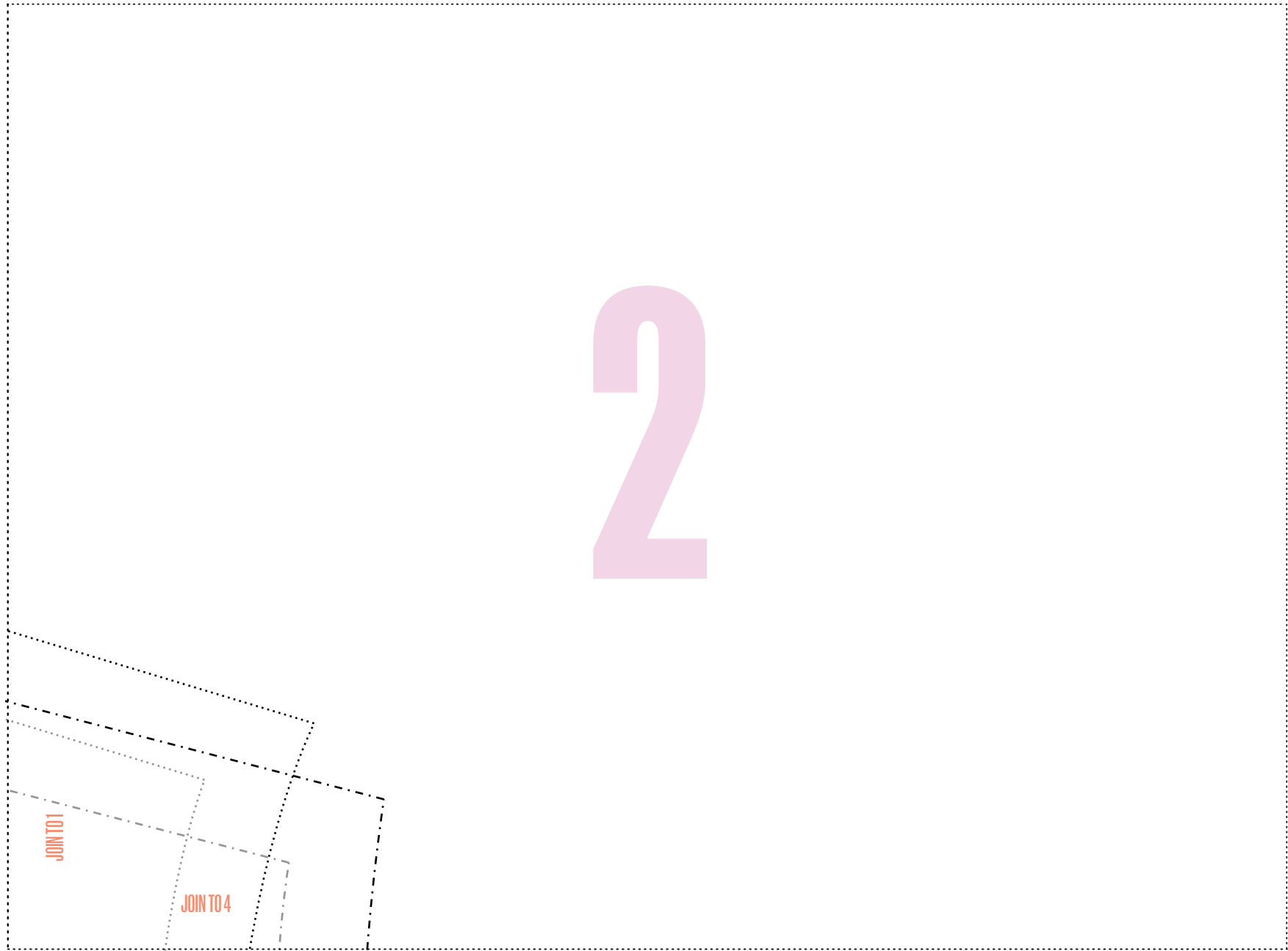
Mollie Quilted Gilet: Front right

- Large (112cm bust)
- 1.5cm seam allowance
- - - - - Medium (98cm bust)
- 1.5cm seam allowance



COPYRIGHT GUIDELINES FOR PROJECTS

We have requested permission from these designers so you can make and sell their projects when adhering to the conditions below. Please credit the designer where appropriate and when requested. *Mollie* encourages creativity, and want to help you make small batches of handmade items to sell. You can handmake as many of our labelled projects as you wish to sell for yourself, a local event or for charity. You cannot sell in shops (online or otherwise) or go into mass production, so you cannot manufacture in large quantities, especially by machine. Selling photocopies of any part of this magazine is prohibited – please respect one another’s copyright. All toys for sale in the UK must meet a list of safety requirements, set out in the Toy (Safety) Regulations 2011. To prove the requirements are met, all toys should carry a CE Mark – a declaration by the maker that a toy is safe. In order to use the CE mark, you must check your products meet the requirements under the Regulations. If you’re using one of our patterns to make items that appeal to children under 14, please take the necessary steps to comply with legislation. Visit www.gov.uk/ce-marking or visit shop.conformance.co.uk to find out about self-certification packs.

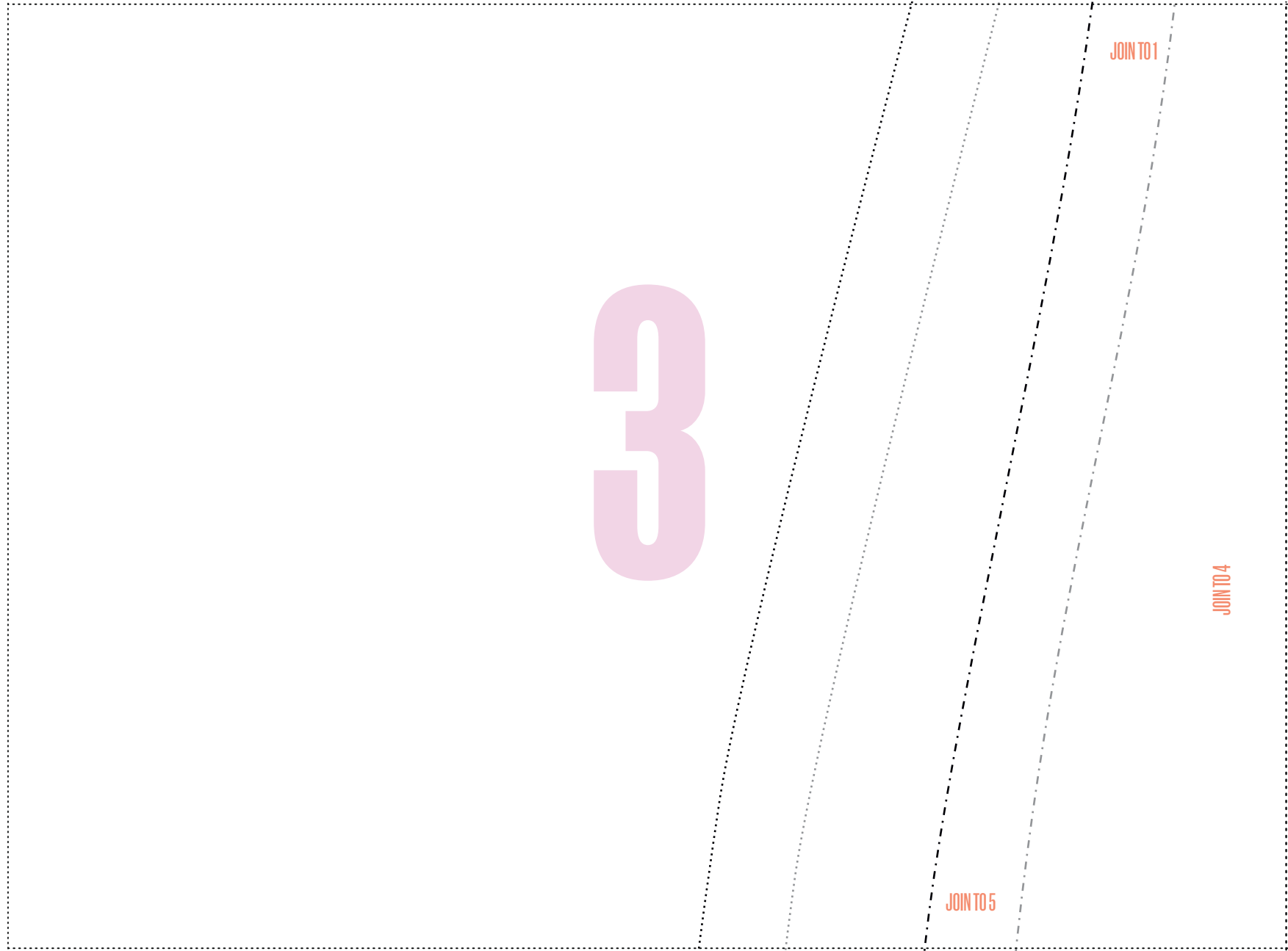


COPYRIGHT GUIDELINES FOR PROJECTS

We have requested permission from these designers so you can make and sell their projects when adhering to the conditions below. Please credit the designer where appropriate and when requested. *Mollie* encourages creativity, and want to help you make small batches of handmade items to sell. You can handmade as many of our labelled projects as you wish to sell for yourself, a local event or for charity. You cannot sell in shops (online or otherwise) or go into mass production, so you cannot manufacture in large quantities, especially by machine. Selling photocopies of any part of this magazine is prohibited – please respect one another’s copyright. All toys for sale in the UK must meet a list of safety requirements, set out in the Toy (Safety) Regulations 2011. To prove the requirements are met, all toys should carry a CE Mark – a declaration by the maker that a toy is safe. In order to use the CE mark, you must check your products meet the requirements under the Regulations. If you’re using one of our patterns to make items that appeal to children under 14, please take the necessary steps to comply with legislation. Visit www.gov.uk/ce-marking or visit shop.conformance.co.uk to find out about self-certification packs.

QUILTED GILET: FRONT RIGHT

CUT ALONG DOTTED LINE TO ASSEMBLE PATTERN

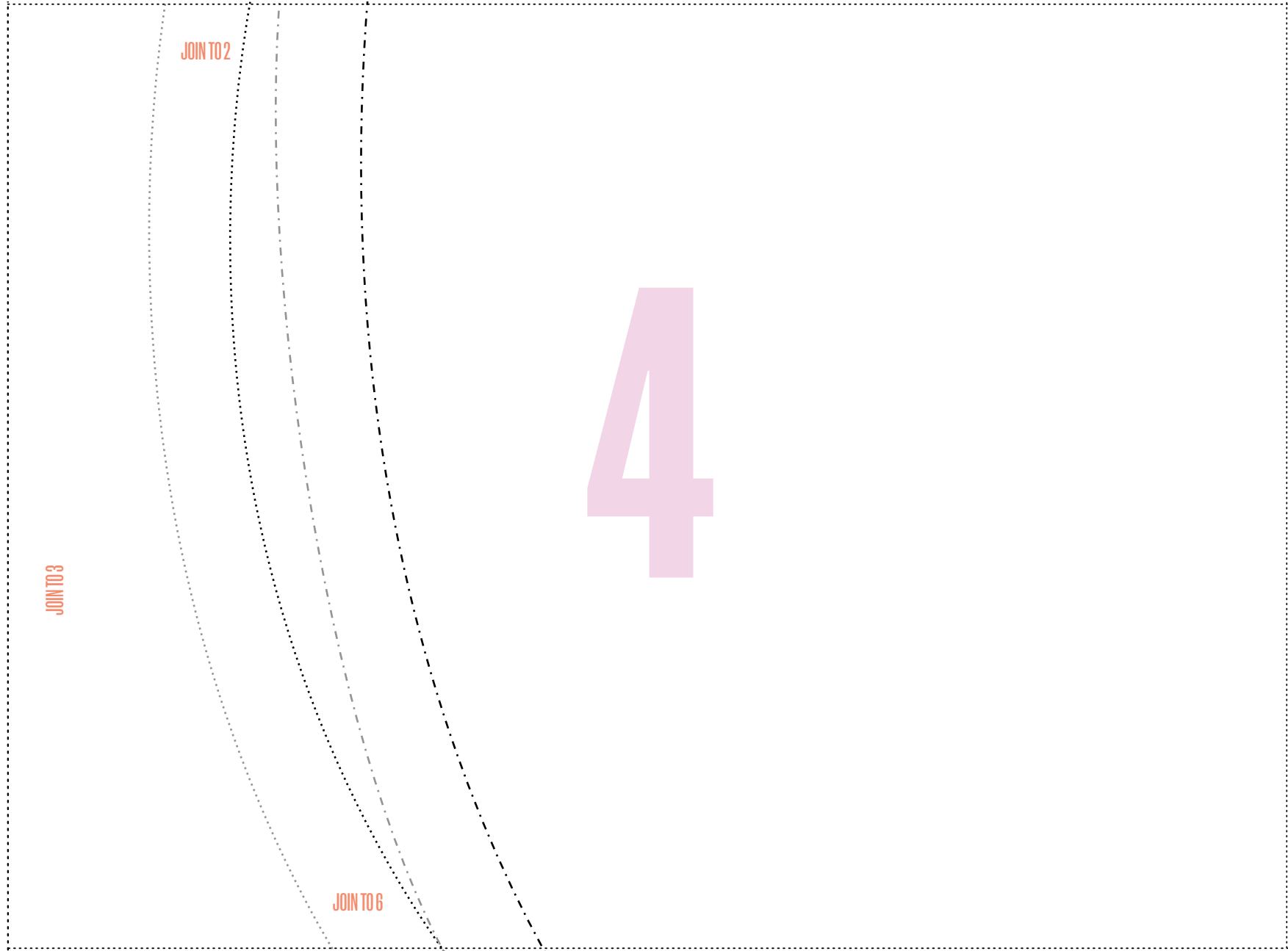


COPYRIGHT GUIDELINES FOR PROJECTS

We have requested permission from these designers so you can make and sell their projects when adhering to the conditions below. Please credit the designer where appropriate and when requested. *Mollie* encourages creativity, and want to help you make small batches of handmade items to sell. You can handmake as many of our labelled projects as you wish to sell for yourself, a local event or for charity. You cannot sell in shops (online or otherwise) or go into mass production, so you cannot manufacture in large quantities, especially by machine. Selling photocopies of any part of this magazine is prohibited – please respect one another’s copyright. All toys for sale in the UK must meet a list of safety requirements, set out in the Toy (Safety) Regulations 2011. To prove the requirements are met, all toys should carry a CE Mark – a declaration by the maker that a toy is safe. In order to use the CE mark, you must check your products meet the requirements under the Regulations. If you’re using one of our patterns to make items that appeal to children under 14, please take the necessary steps to comply with legislation. Visit www.gov.uk/ce-marking or visit shop.conformance.co.uk to find out about self-certification packs.

QUILTED GILET: FRONT RIGHT

CUT ALONG DOTTED LINE TO ASSEMBLE PATTERN

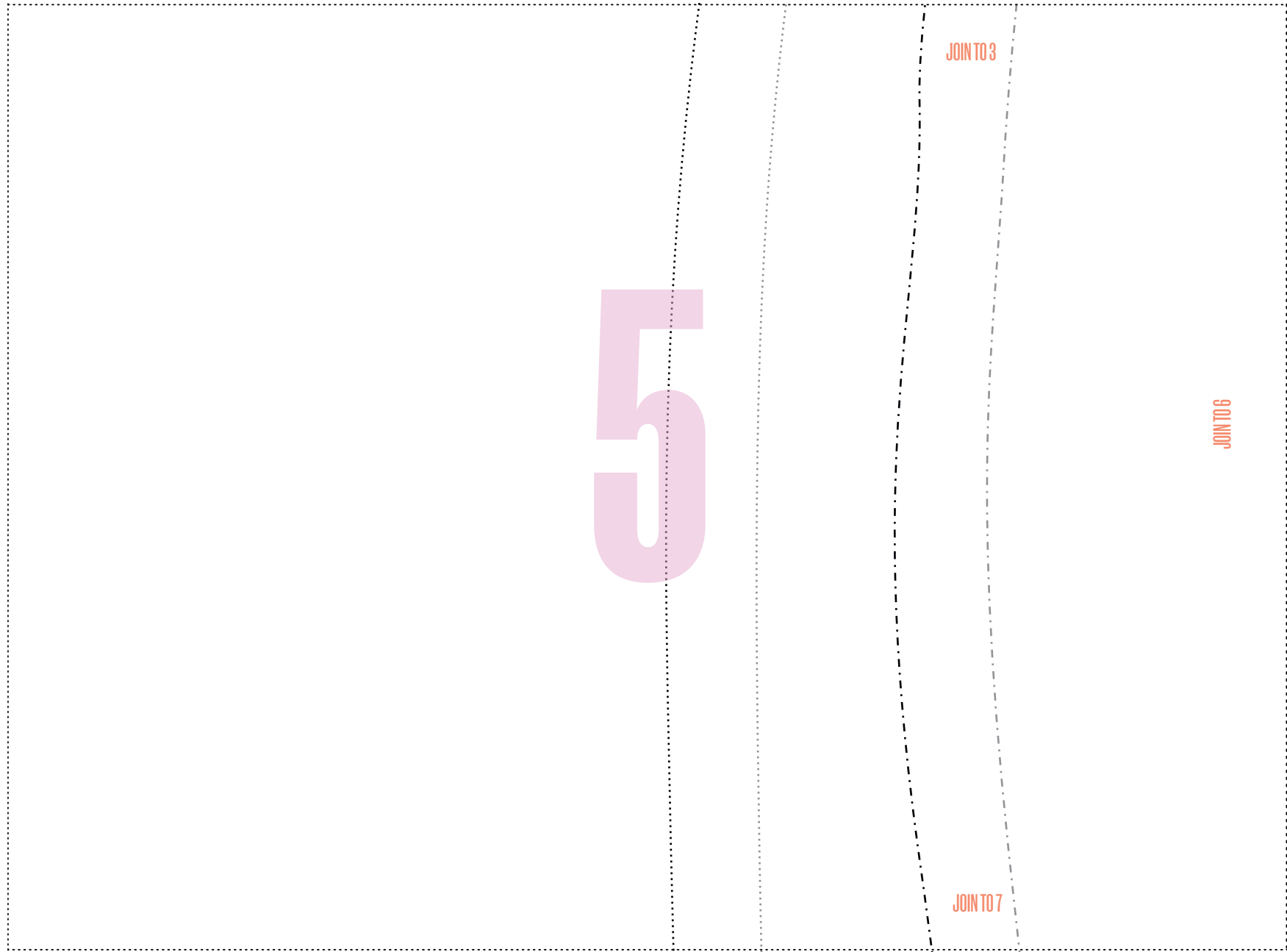


COPYRIGHT GUIDELINES FOR PROJECTS

We have requested permission from these designers so you can make and sell their projects when adhering to the conditions below. Please credit the designer where appropriate and when requested. *Mollie* encourages creativity, and want to help you make small batches of handmade items to sell. You can handmade as many of our labelled projects as you wish to sell for yourself, a local event or for charity. You cannot sell in shops (online or otherwise) or go into mass production, so you cannot manufacture in large quantities, especially by machine. Selling photocopies of any part of this magazine is prohibited – please respect one another’s copyright. All toys for sale in the UK must meet a list of safety requirements, set out in the Toy (Safety) Regulations 2011. To prove the requirements are met, all toys should carry a CE Mark – a declaration by the maker that a toy is safe. In order to use the CE mark, you must check your products meet the requirements under the Regulations. If you’re using one of our patterns to make items that appeal to children under 14, please take the necessary steps to comply with legislation. Visit www.gov.uk/ce-marking or visit shop.conformance.co.uk to find out about self-certification packs.

QUILTED GILET: FRONT RIGHT

CUT ALONG DOTTED LINE TO ASSEMBLE PATTERN

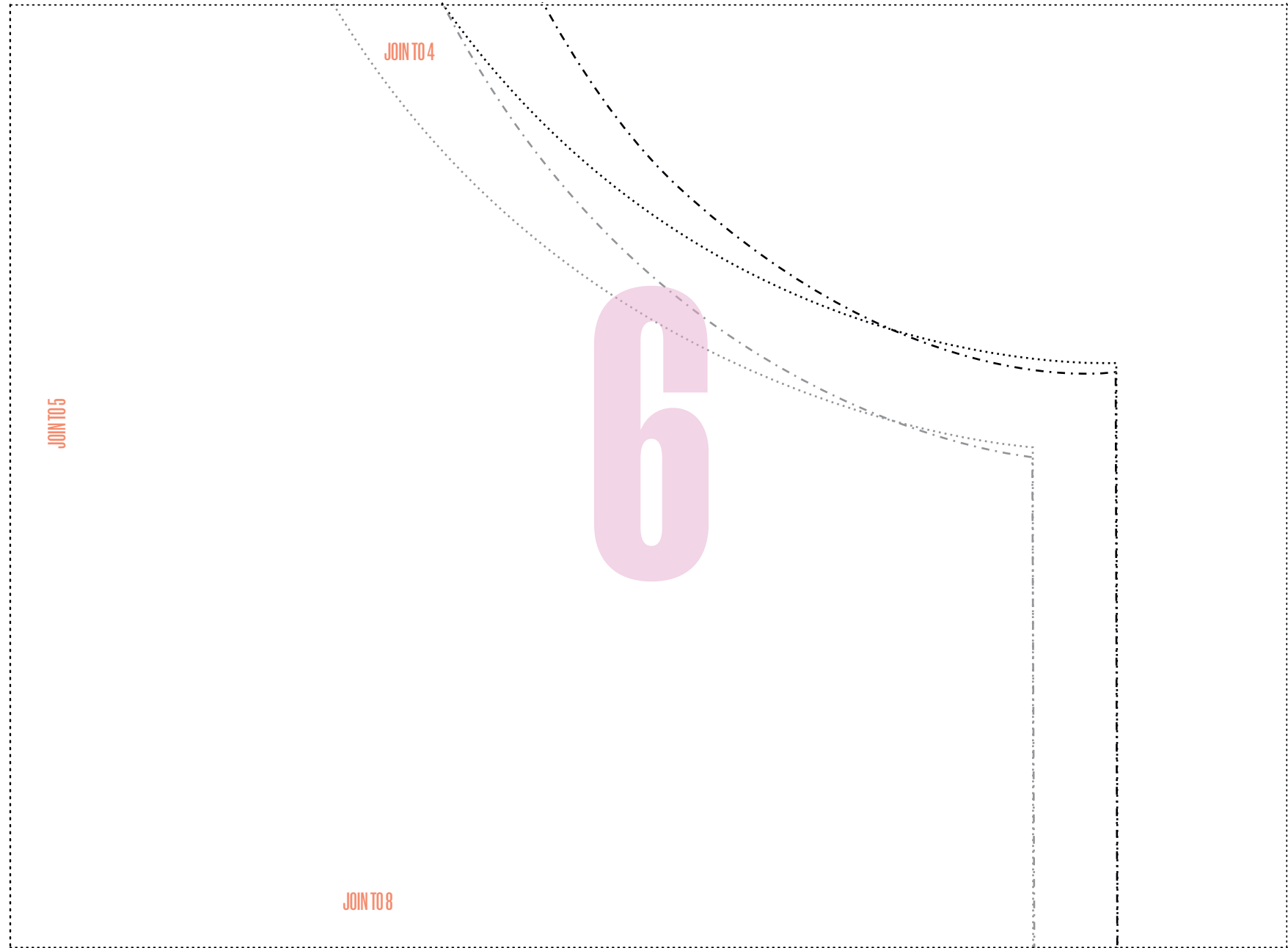


COPYRIGHT GUIDELINES FOR PROJECTS

We have requested permission from these designers so you can make and sell their projects when adhering to the conditions below. Please credit the designer where appropriate and when requested. *Mollie* encourages creativity, and want to help you make small batches of handmade items to sell. You can handmade as many of our labelled projects as you wish to sell for yourself, a local event or for charity. You cannot sell in shops (online or otherwise) or go into mass production, so you cannot manufacture in large quantities, especially by machine. Selling photocopies of any part of this magazine is prohibited – please respect one another’s copyright. All toys for sale in the UK must meet a list of safety requirements, set out in the Toy (Safety) Regulations 2011. To prove the requirements are met, all toys should carry a CE Mark – a declaration by the maker that a toy is safe. In order to use the CE mark, you must check your products meet the requirements under the Regulations. If you’re using one of our patterns to make items that appeal to children under 14, please take the necessary steps to comply with legislation. Visit www.gov.uk/ce-marking or visit shop.conformance.co.uk to find out about self-certification packs.

QUILTED GILET: FRONT RIGHT

CUT ALONG DOTTED LINE TO ASSEMBLE PATTERN

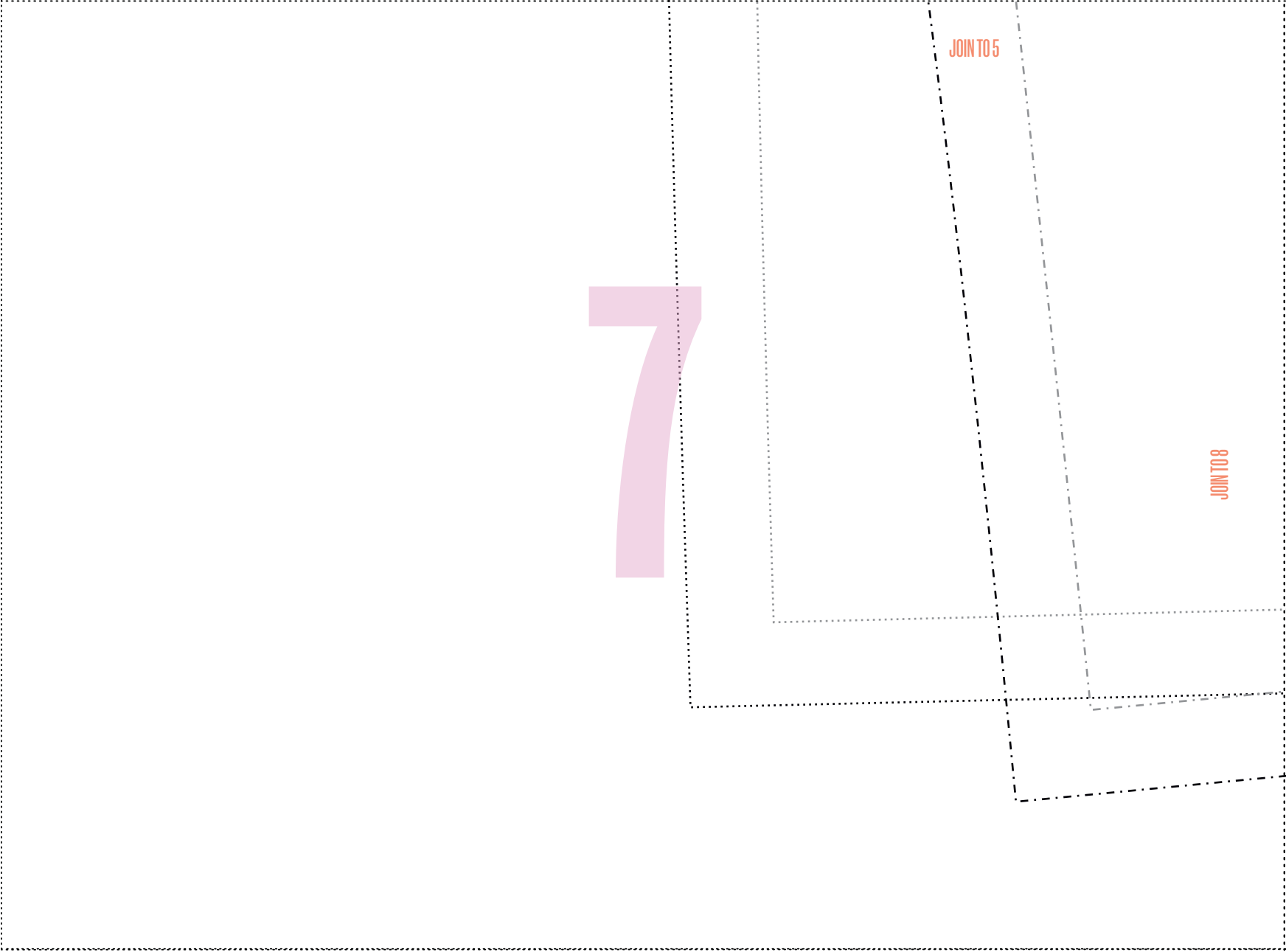


COPYRIGHT GUIDELINES FOR PROJECTS

We have requested permission from these designers so you can make and sell their projects when adhering to the conditions below. Please credit the designer where appropriate and when requested. *Mollie* encourages creativity, and want to help you make small batches of handmade items to sell. You can handmake as many of our labelled projects as you wish to sell for yourself, a local event or for charity. You cannot sell in shops (online or otherwise) or go into mass production, so you cannot manufacture in large quantities, especially by machine. Selling photocopies of any part of this magazine is prohibited – please respect one another’s copyright. All toys for sale in the UK must meet a list of safety requirements, set out in the Toy (Safety) Regulations 2011. To prove the requirements are met, all toys should carry a CE Mark – a declaration by the maker that a toy is safe. In order to use the CE mark, you must check your products meet the requirements under the Regulations. If you’re using one of our patterns to make items that appeal to children under 14, please take the necessary steps to comply with legislation. Visit www.gov.uk/ce-marking or visit shop.conformance.co.uk to find out about self-certification packs.

QUILTED GILET: FRONT RIGHT

CUT ALONG DOTTED LINE TO ASSEMBLE PATTERN

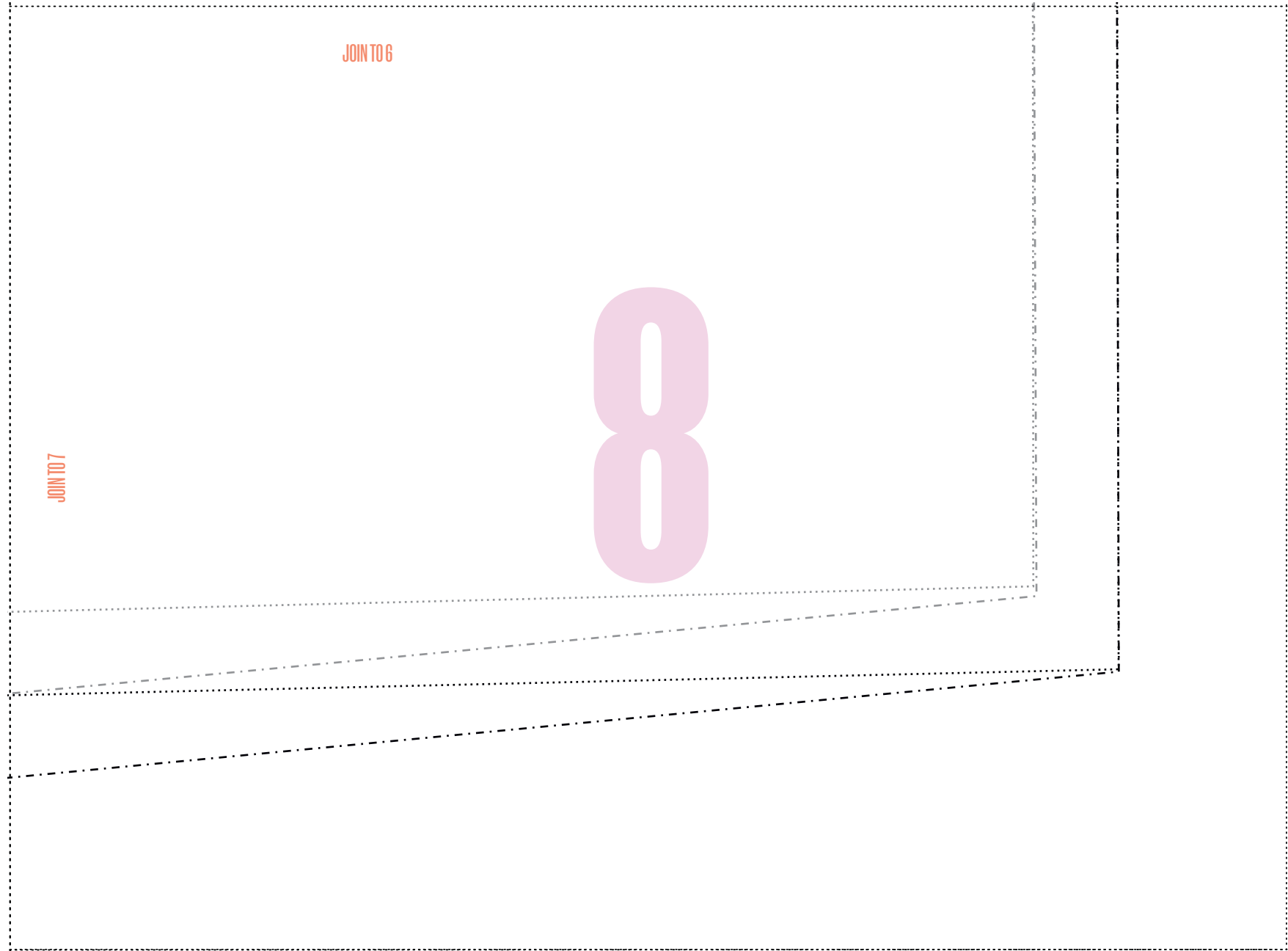


COPYRIGHT GUIDELINES FOR PROJECTS

We have requested permission from these designers so you can make and sell their projects when adhering to the conditions below. Please credit the designer where appropriate and when requested. Mollie encourages creativity, and want to help you make small batches of handmade items to sell. You can handmade as many of our labelled projects as you wish to sell for yourself, a local event or for charity. You cannot sell in shops (online or otherwise) or go into mass production, so you cannot manufacture in large quantities, especially by machine. Selling photocopies of any part of this magazine is prohibited - please respect one another's copyright. All toys for sale in the UK must meet a list of safety requirements, set out in the Toy (Safety) Regulations 2011. To prove the requirements are met, all toys should carry a CE Mark - a declaration by the maker that a toy is safe. In order to use the CE mark, you must check your products meet the requirements under the Regulations. If you're using one of our patterns to make items that appeal to children under 14, please take the necessary steps to comply with legislation. Visit www.gov.uk/ce-marking or visit shop.conformance.co.uk to find out about self-certification packs.

QUILTED GILET: FRONT RIGHT

CUT ALONG DOTTED LINE TO ASSEMBLE PATTERN



COPYRIGHT GUIDELINES FOR PROJECTS

We have requested permission from these designers so you can make and sell their projects when adhering to the conditions below. Please credit the designer where appropriate and when requested. *Mollie* encourages creativity, and want to help you make small batches of handmade items to sell. You can handmake as many of our labelled projects as you wish to sell for yourself, a local event or for charity. You cannot sell in shops (online or otherwise) or go into mass production, so you cannot manufacture in large quantities, especially by machine. Selling photocopies of any part of this magazine is prohibited – please respect one another’s copyright. All toys for sale in the UK must meet a list of safety requirements, set out in the Toy (Safety) Regulations 2011. To prove the requirements are met, all toys should carry a CE Mark – a declaration by the maker that a toy is safe. In order to use the CE mark, you must check your products meet the requirements under the Regulations. If you’re using one of our patterns to make items that appeal to children under 14, please take the necessary steps to comply with legislation. Visit www.gov.uk/ce-marking or visit shop.conformance.co.uk to find out about self-certification packs.