

Plastic canvas boxes

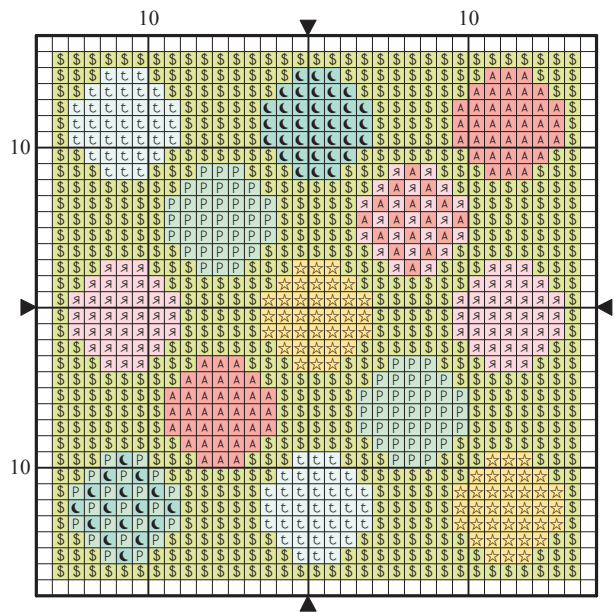
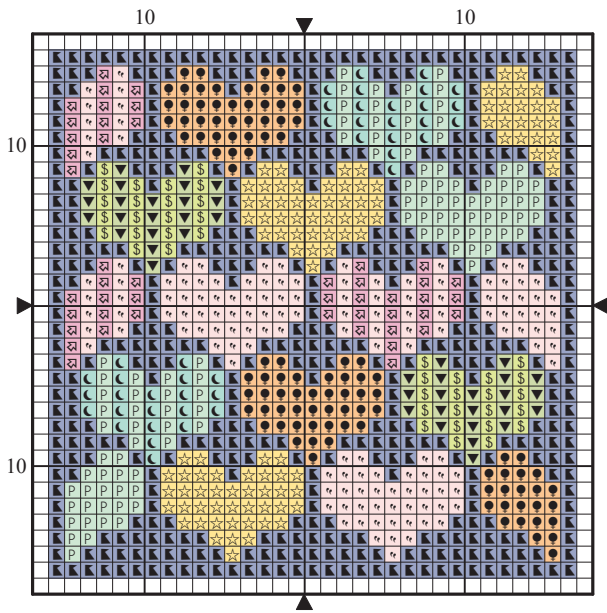
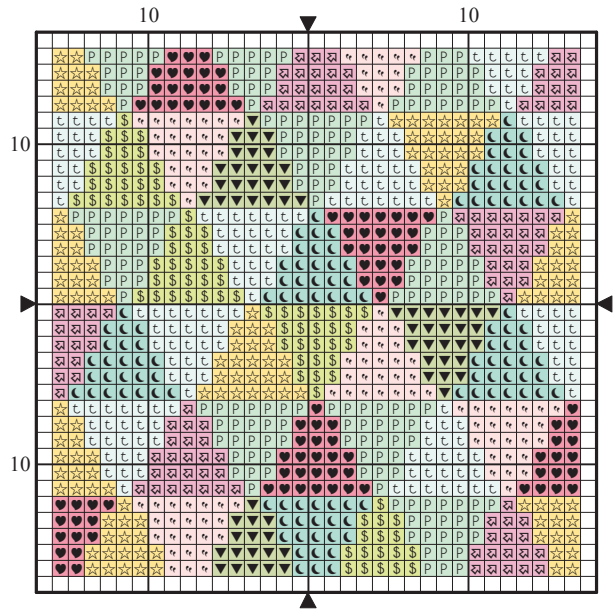
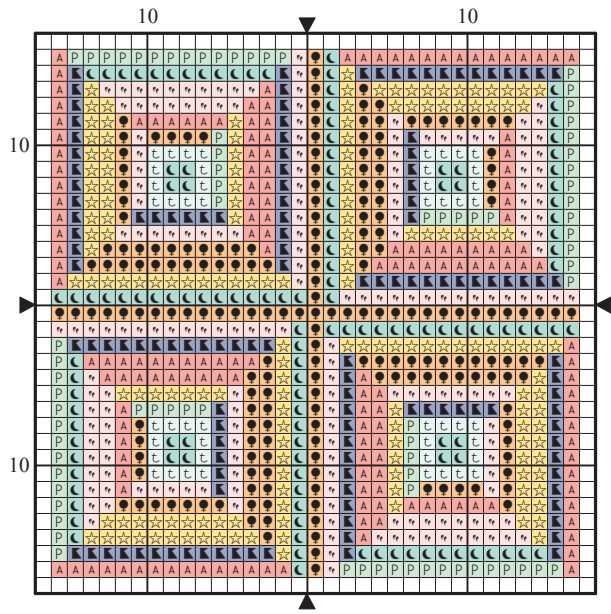
✦ Cross stitch in two strands

	DMC	Anchor	Madeira
S	712	926	2101
●	741	304	202
t	747	158	1104
▲	824	143	1010
▼	906	256	1410
\$	907	255	1308
☾	958	187	1114
☼	963	73	502
P	964	185	1112
☆	973	290	105
A	3705	35	410
я	3708	31	408
♥	3804	63	704
☒	3806	62	701

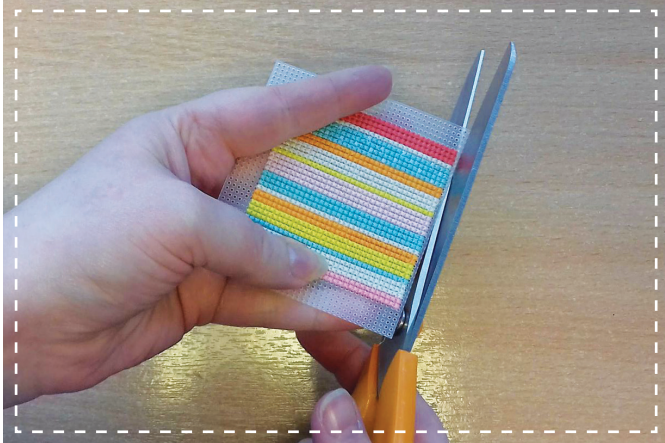
✦ Whole stitches only

Stitch count 33 (h) x 33 (w)
 Design area on 14-count fabric
 6x6cm (2¼x2¼in)

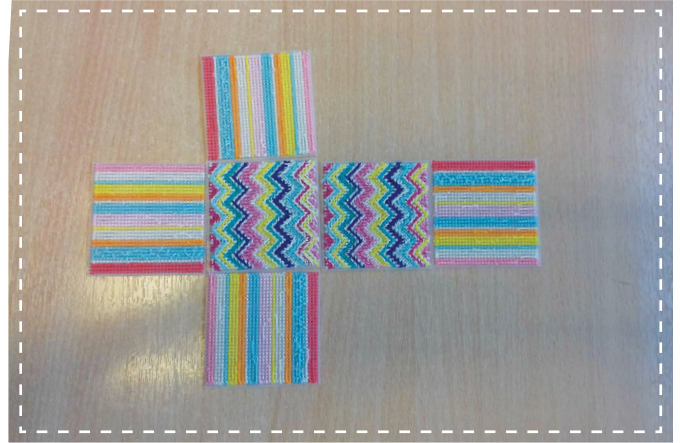




How to make... colourful gift boxes



1 Trim all the plastic canvas panels leaving a complete one row border. It is important that you cut close to, but not through this row, as it's needed for stitching the sides together.



2 Arrange the squares in a cross, with one long side. The centre of the cross is the base. Position the other panels face up, so the stitching is on the outside when assembled.



3 Whipstitch the side panels to the base panel one at a time. Use three strands of thread in a bright shade for a colourful finish.



4 Use whipstitch to sew the side panels together. Then overstitch the top edge of the canvas, leaving one side unstitched for the lid hinge.



5 Overstitch around the top three edges of your lid panel to cover the plastic canvas, leaving the hinge edge unstitched. Then, whipstitch the lid and box together along this edge.



6 To create the clasp, attach a bead to the front of the box, centred along the top edge. Add a loop of thin cord to the underside of the lid, securing in place with a few stitches.