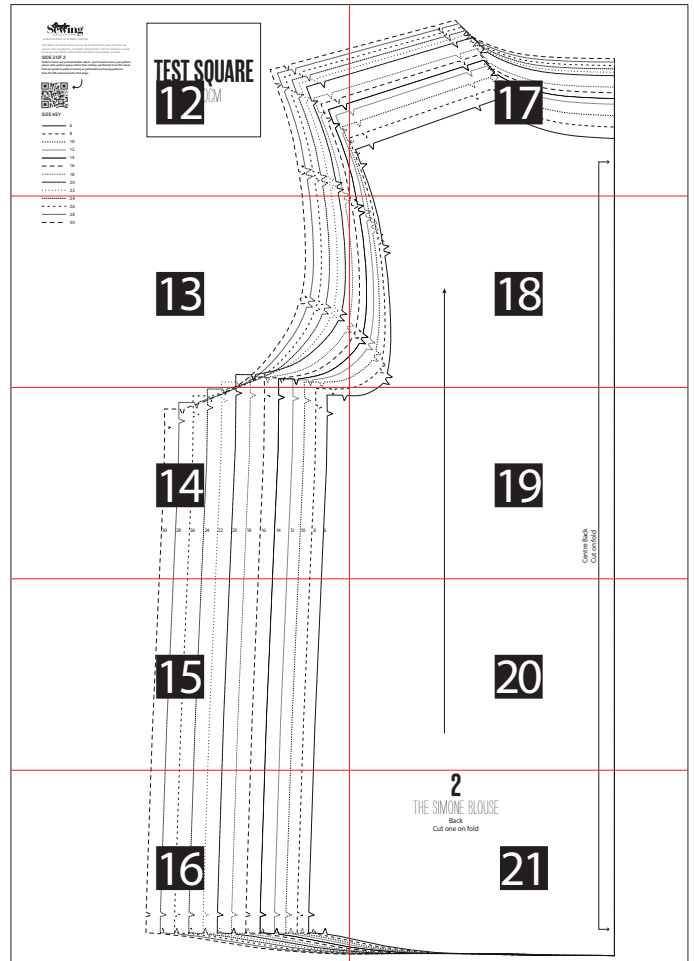
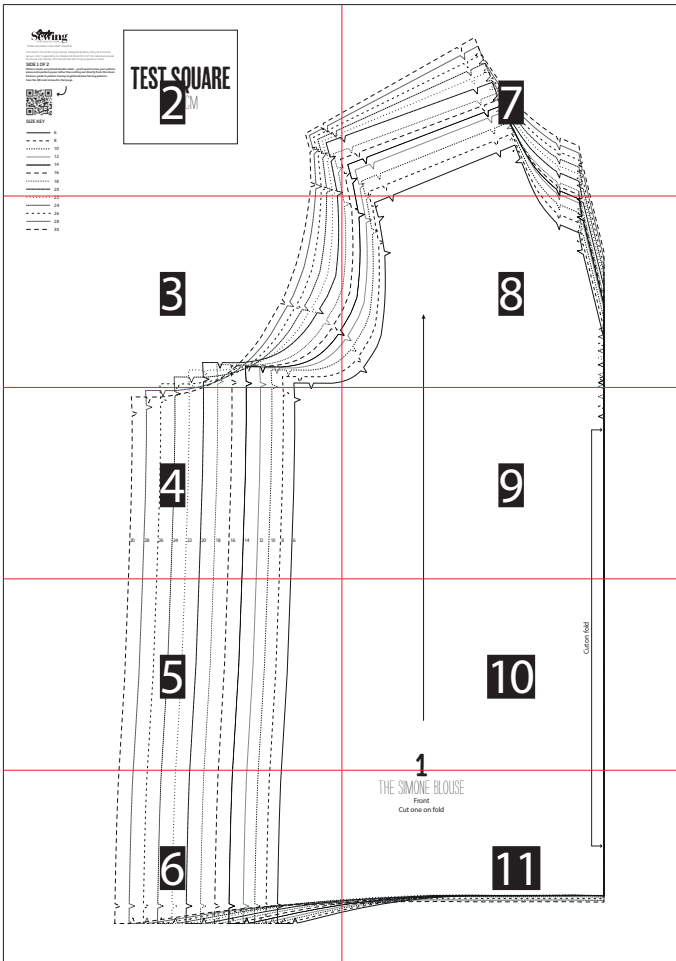


HOW TO PRINT THIS PATTERN

Print out the following pages on A4 paper at 100%.
Overlap the red lines and tape the sheets in place using the guide below.



SIDE 1 OF 2

Pattern sheets are printed double sided – you'll need to trace your pattern pieces onto pattern paper rather than cutting out directly from this sheet. Find our guide to pattern tracing at gathered.how/tracing-patterns. Scan the QR code to head to that page.

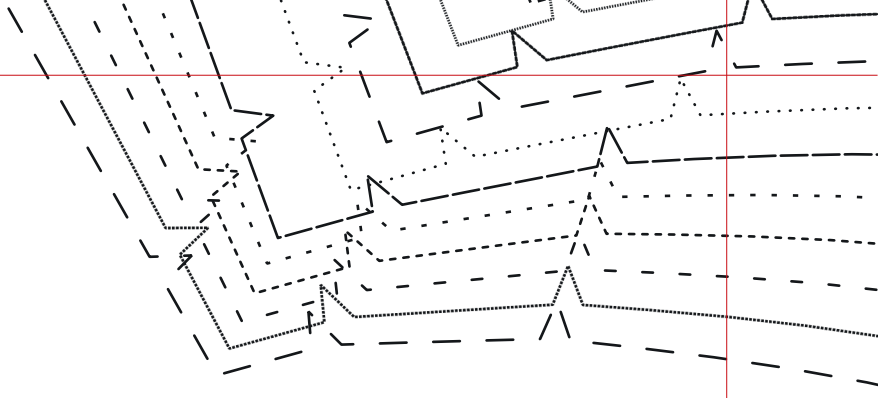


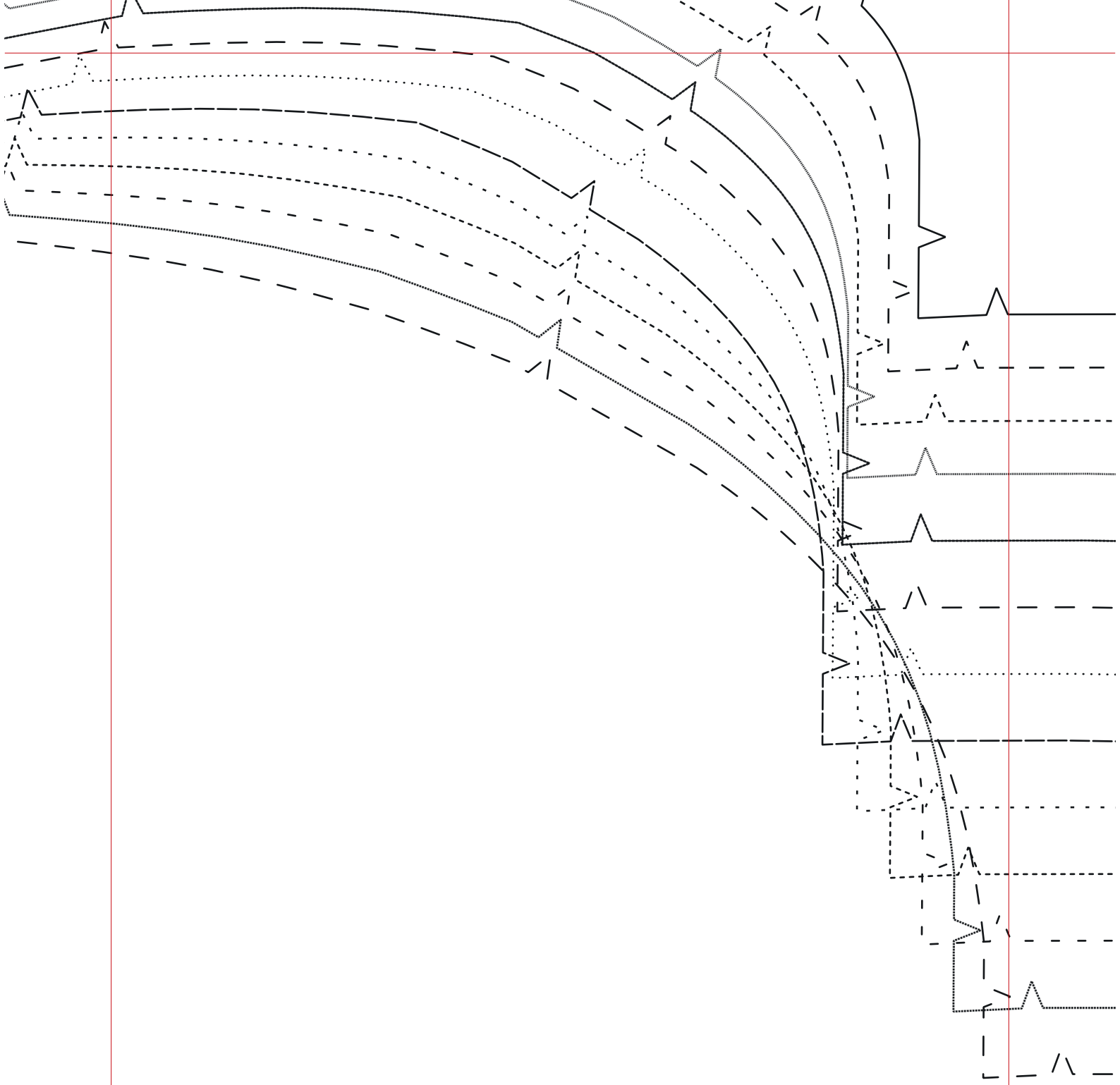
SIZE KEY

- 6
- - 8
- - - 10
- 12
- 14
- - 16
- 18
- - 20
- . . . 22
- - - - 24
- - - - 26
- 28
- - - - 30

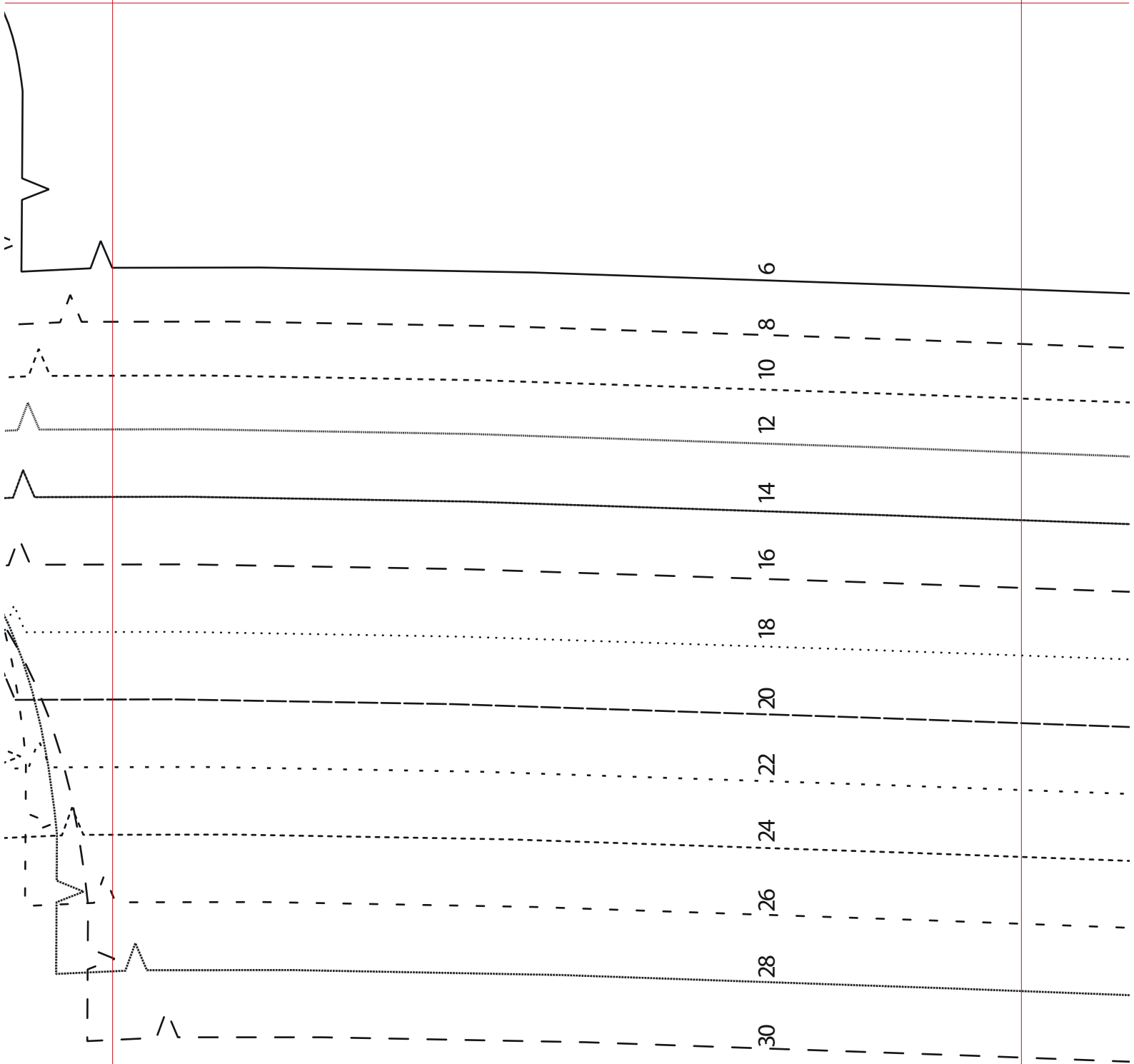
TEST SQUARE

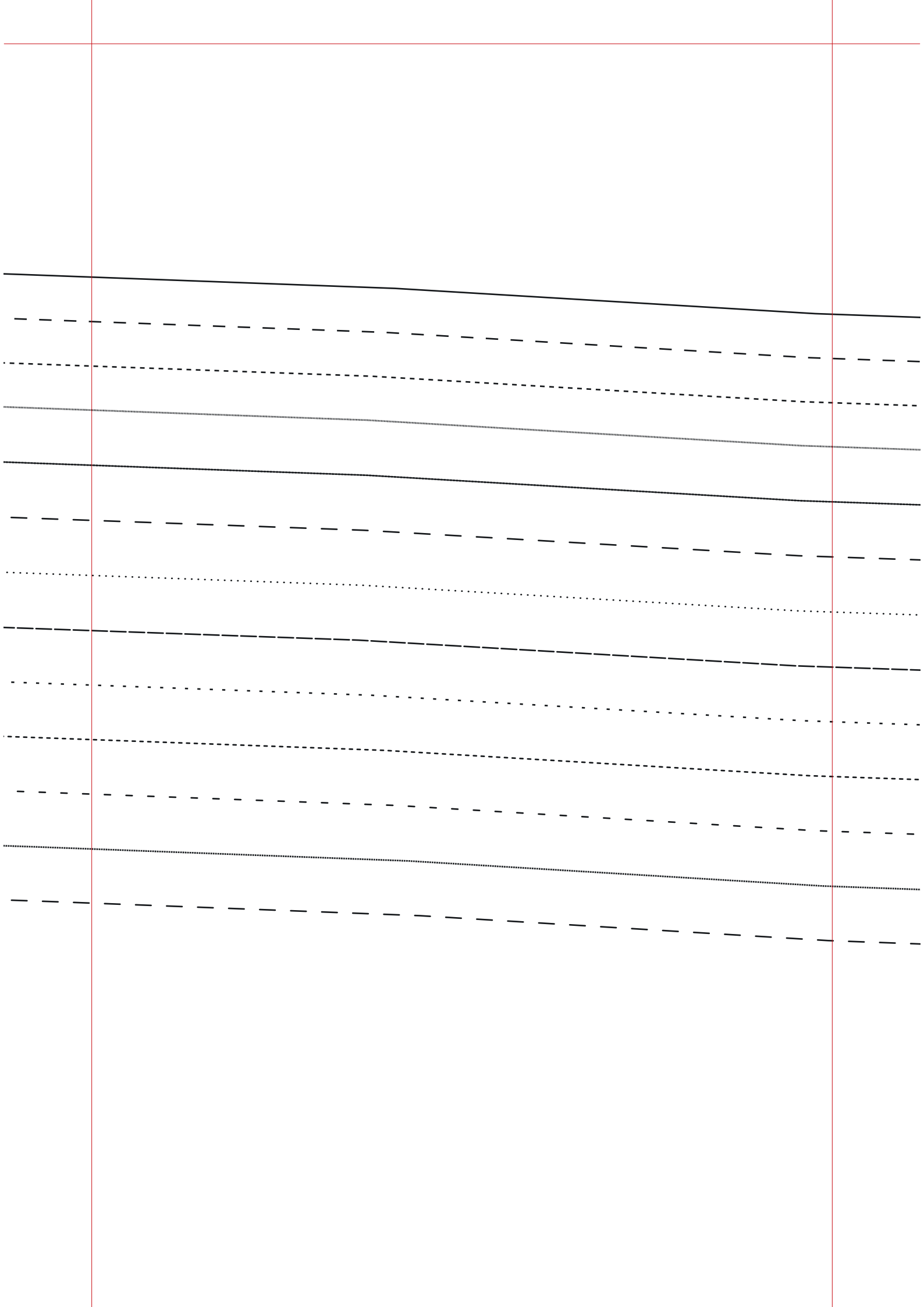
10X10CM

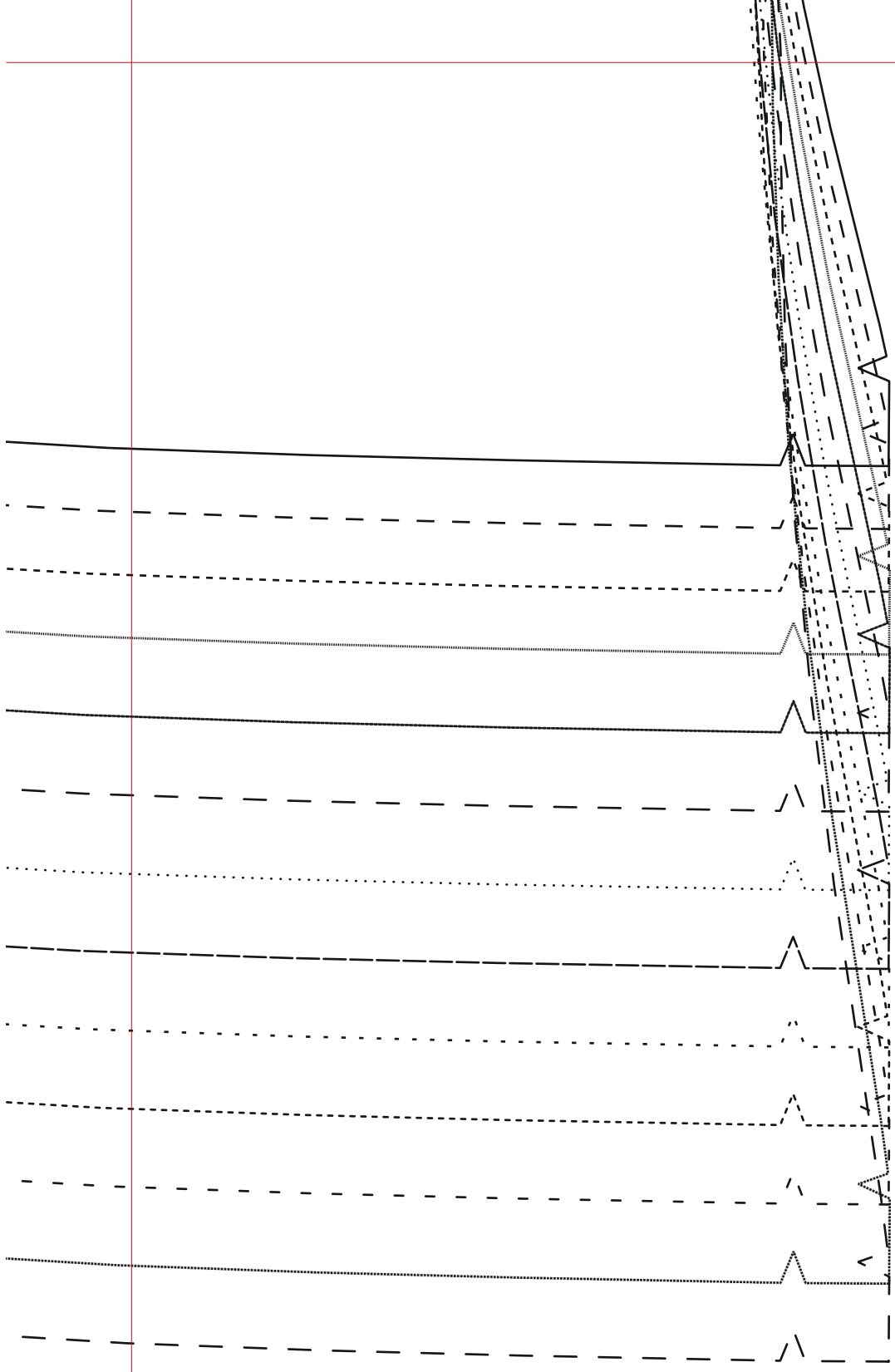


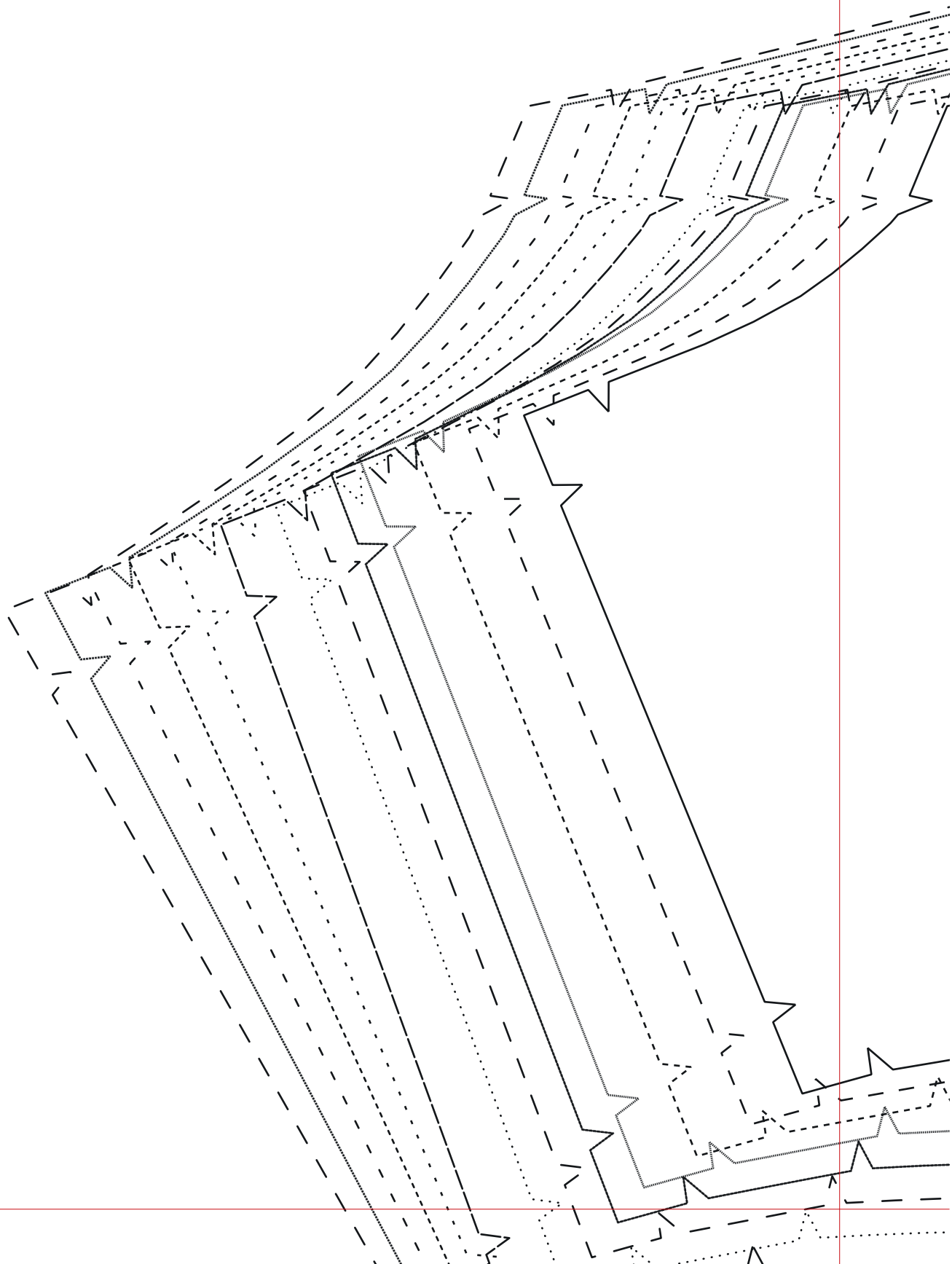


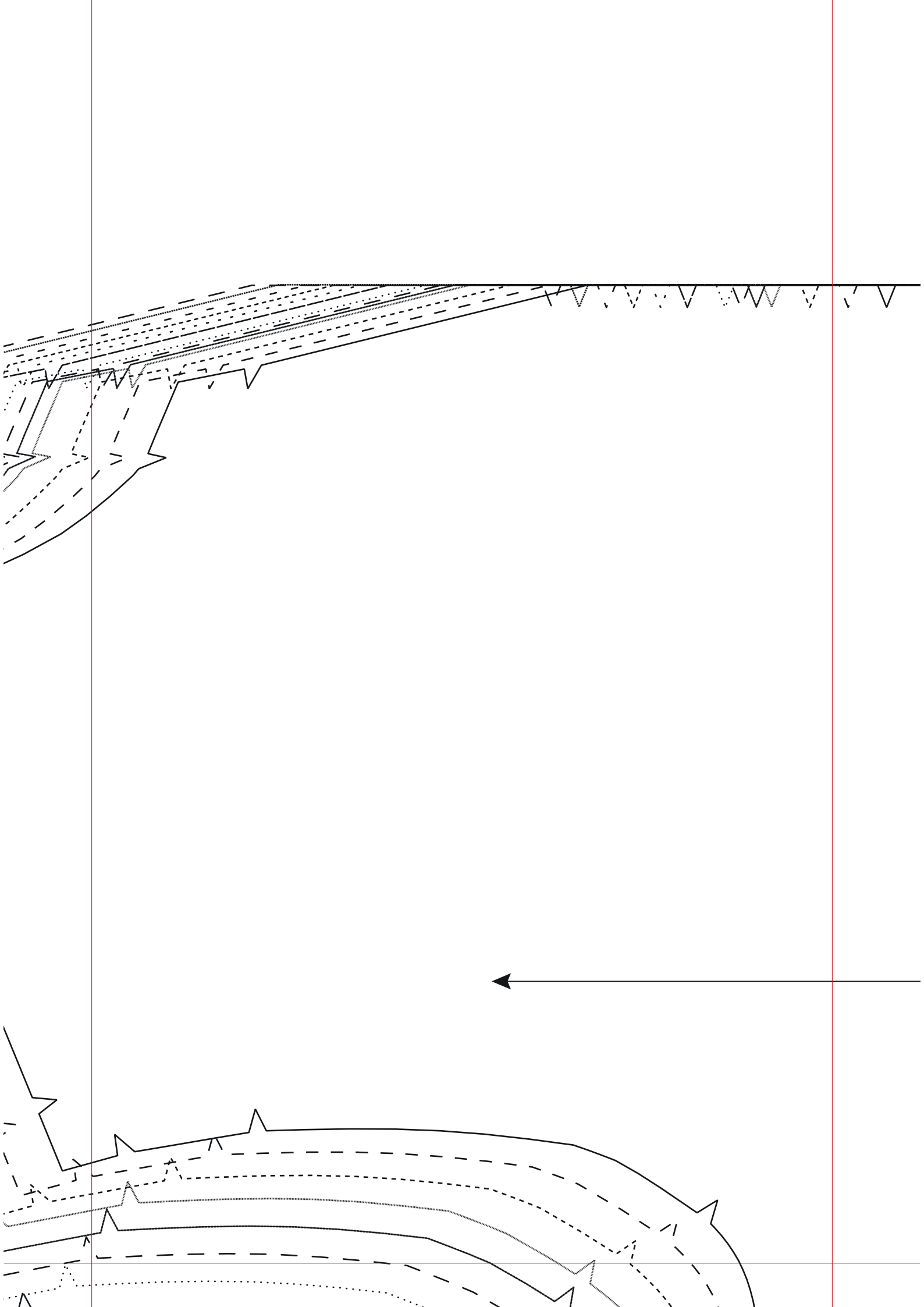
- 20
- · · 22
- - - 24
- - - 26
- · · 28
- - - 30













1

THE SIMONE BLOUSE

Front

Cut on fold

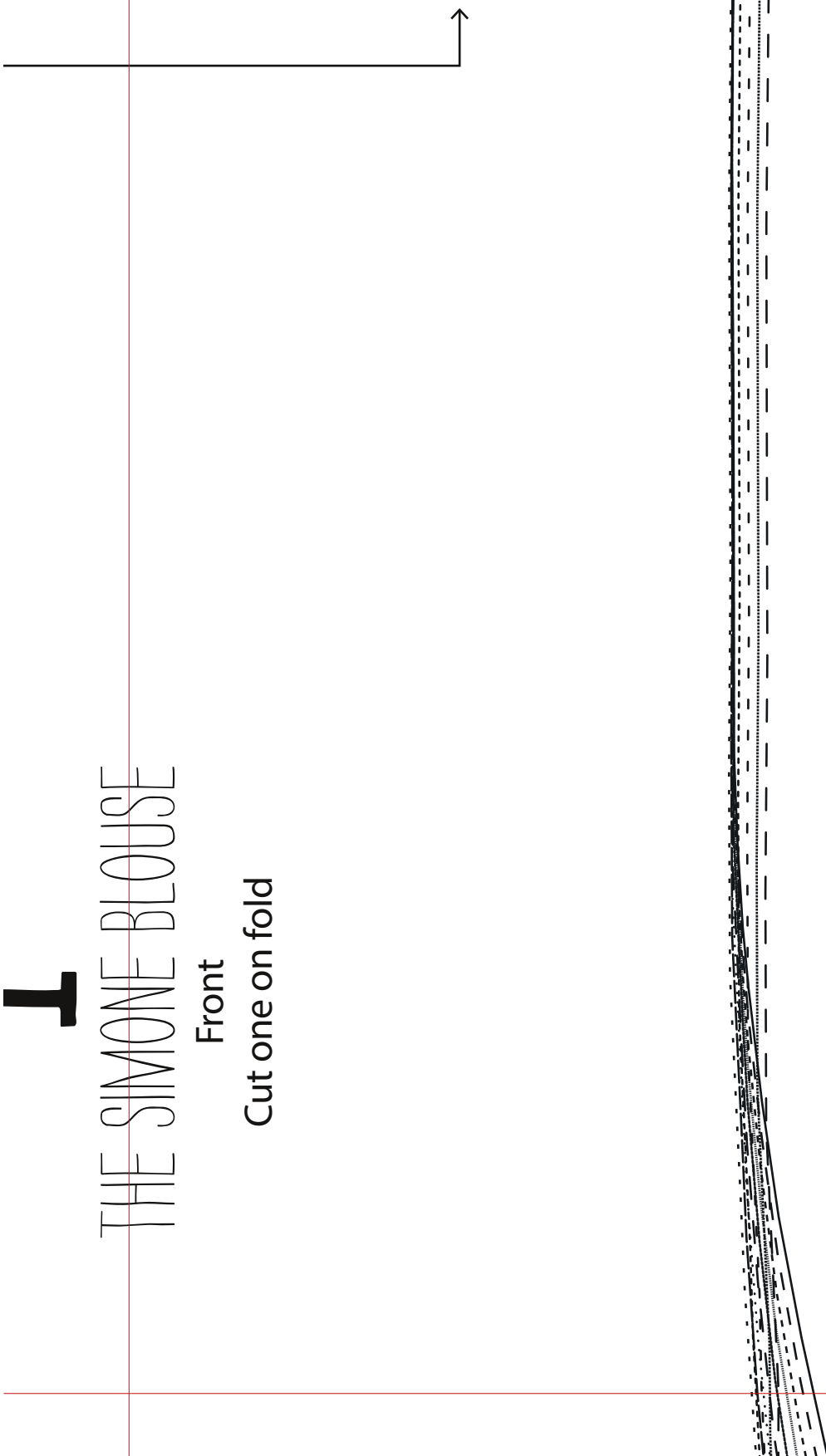
Cut on fold

1

THE SIMONE BLOUSE

Front

Cut one on fold



SIDE 2 OF 2

Pattern sheets are printed double sided – you'll need to trace your pattern pieces onto pattern paper rather than cutting out directly from this sheet. Find our guide to pattern tracing at gathered.how/tracing-patterns. Scan the QR code to head to that page.

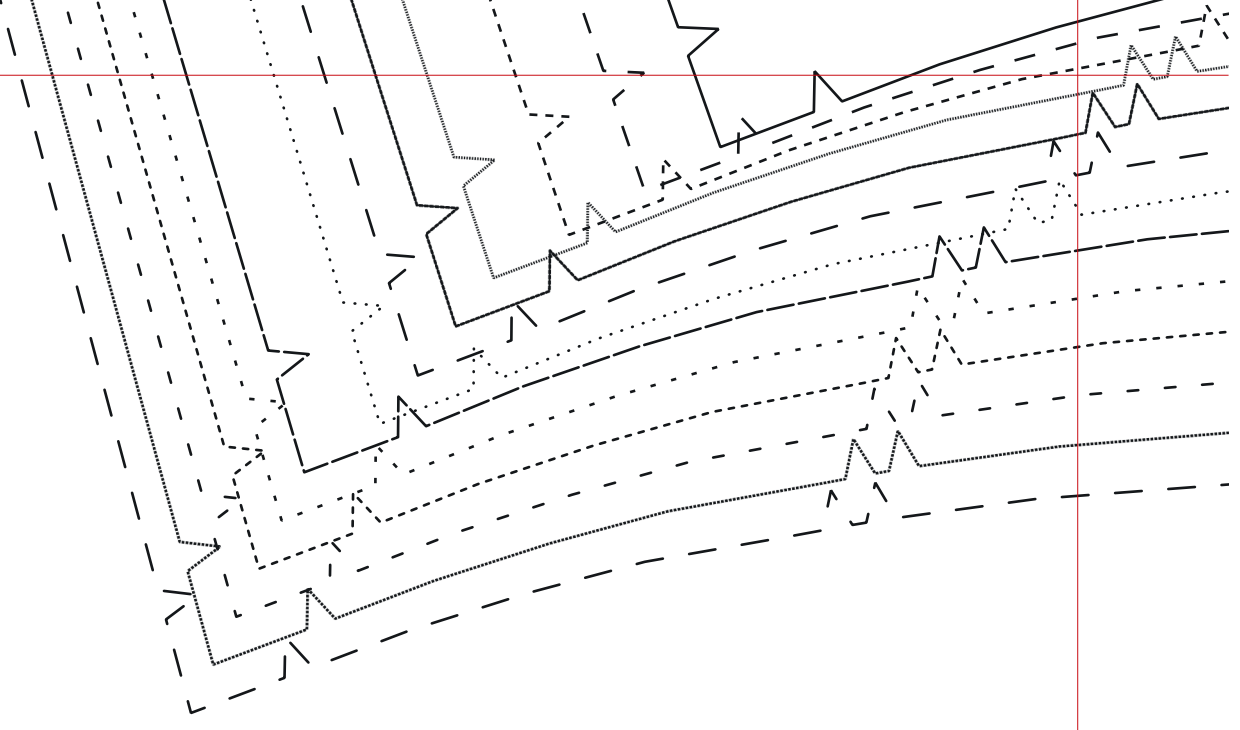


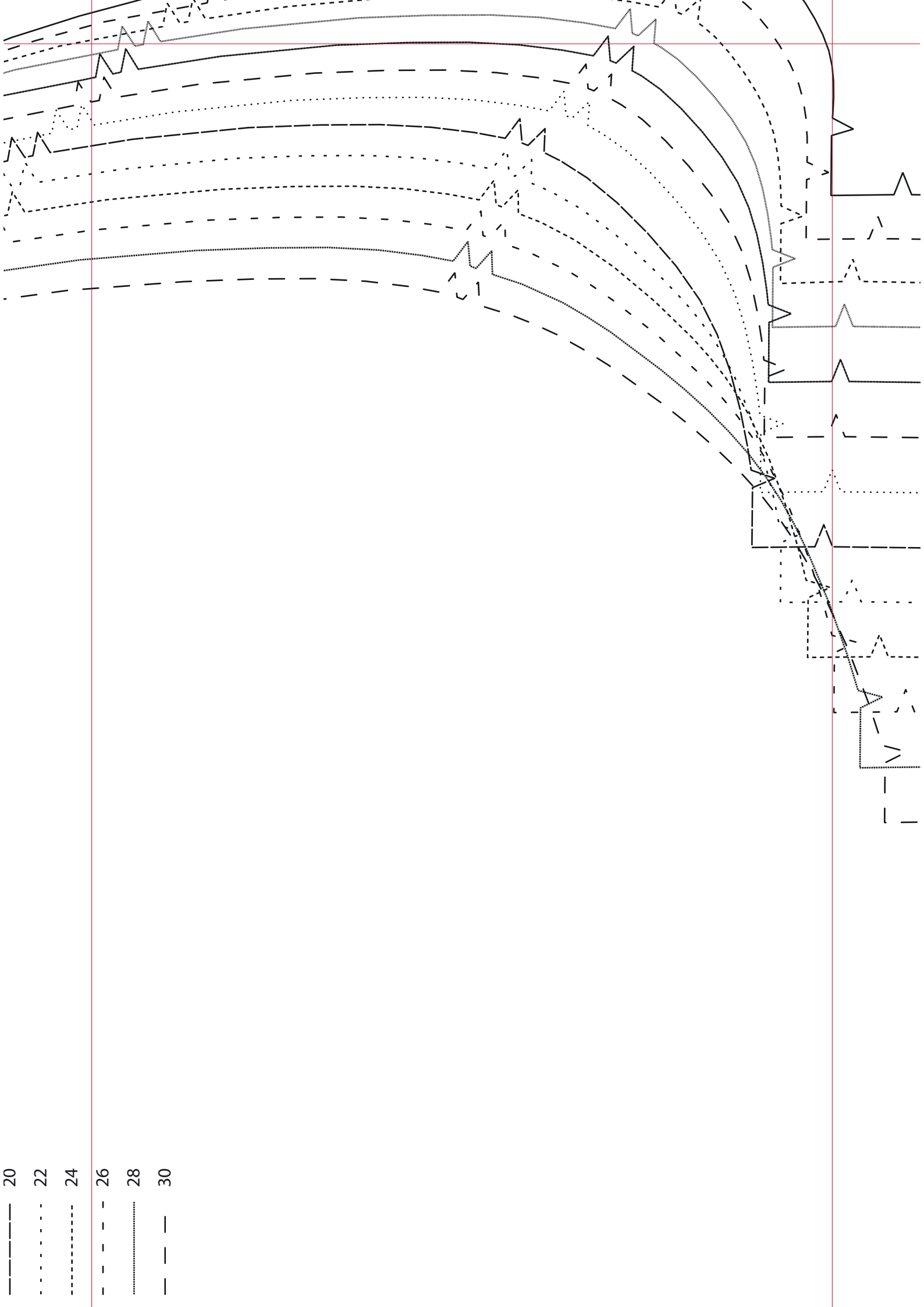
SIZE KEY

- 6
- - 8
- - - 10
- 12
- 14
- - 16
- 18
- - 20
- . . . 22
- - - - 24
- - - - 26
- 28
- - - - 30

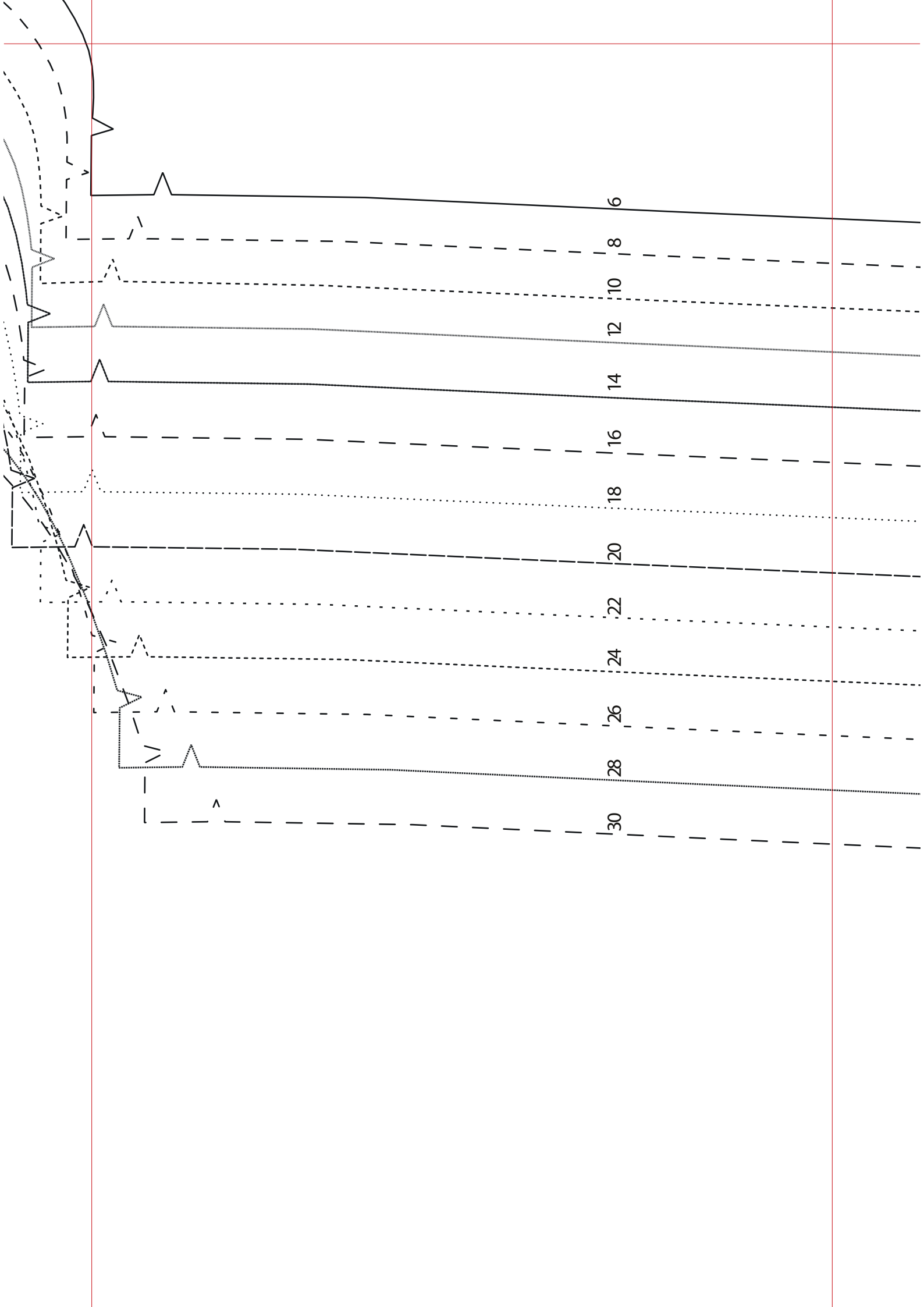
TEST SQUARE

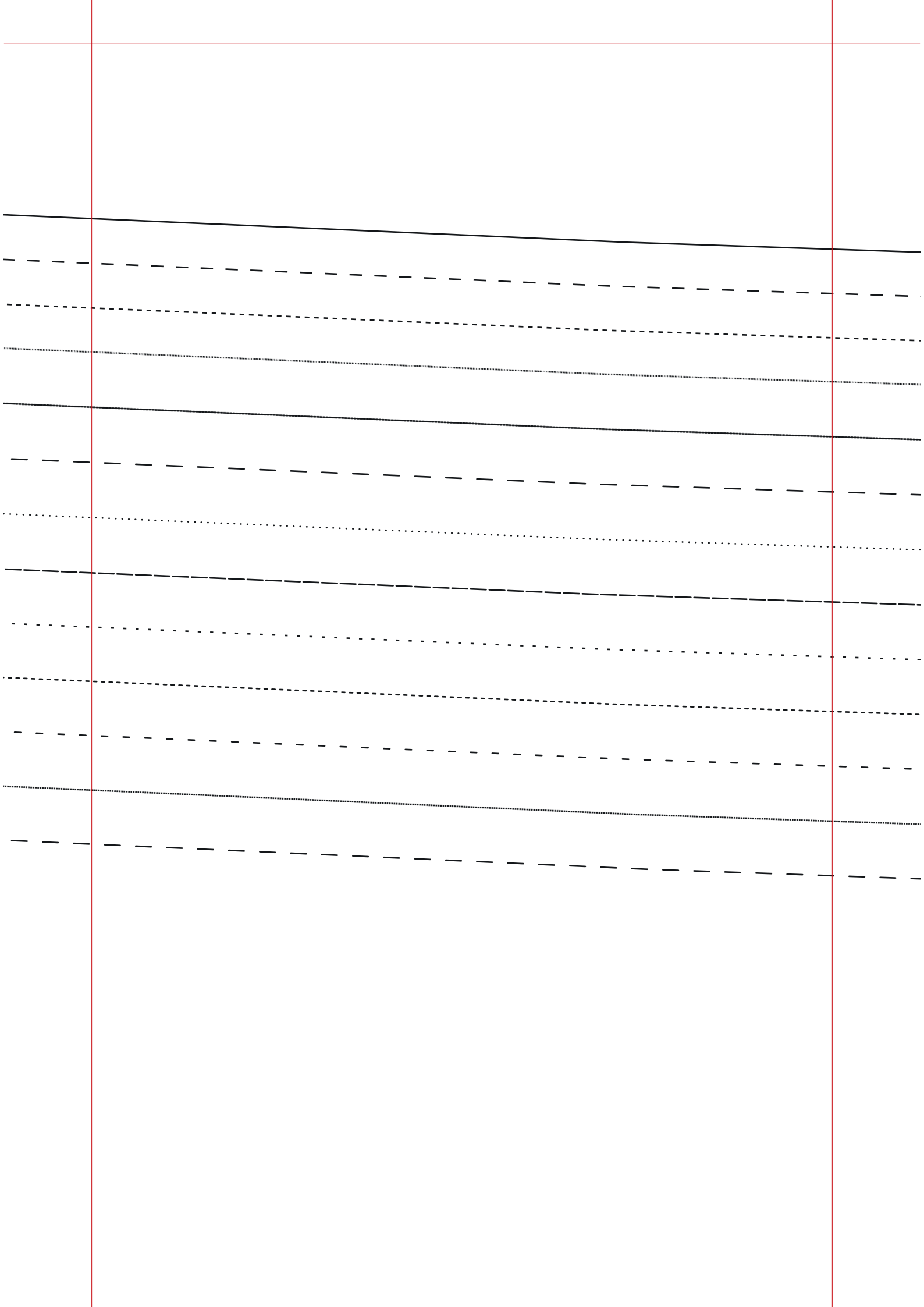
10X10CM

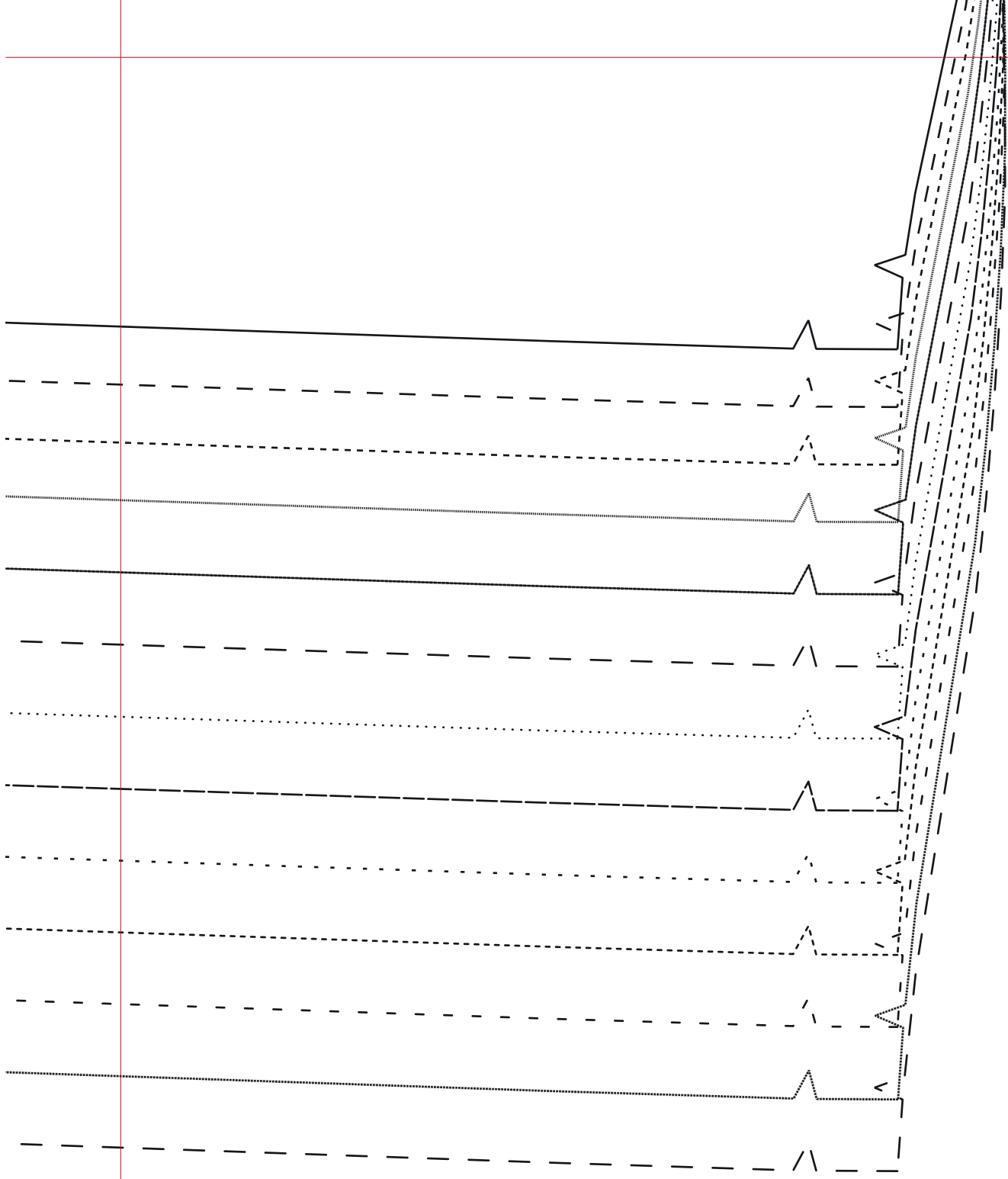


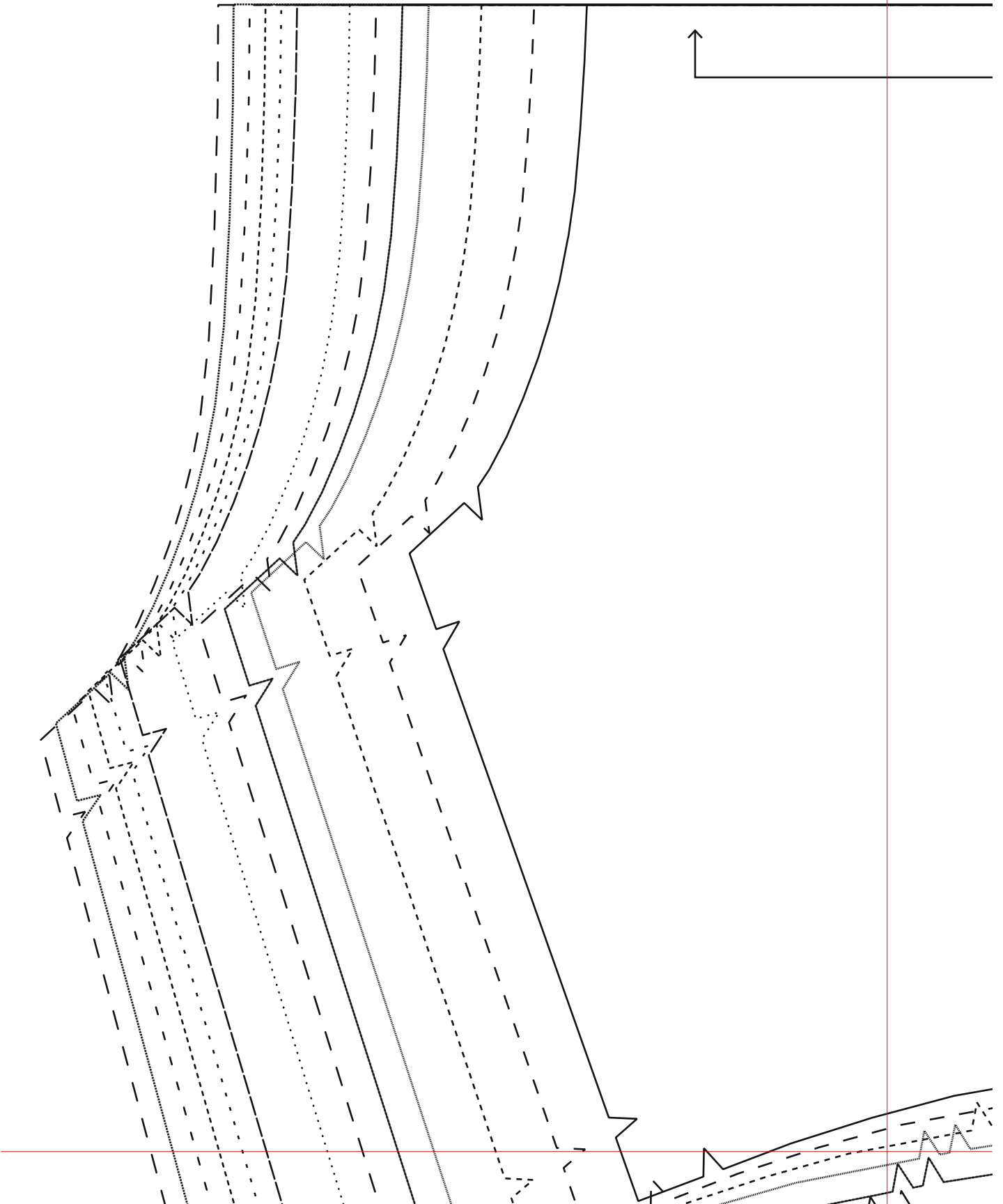


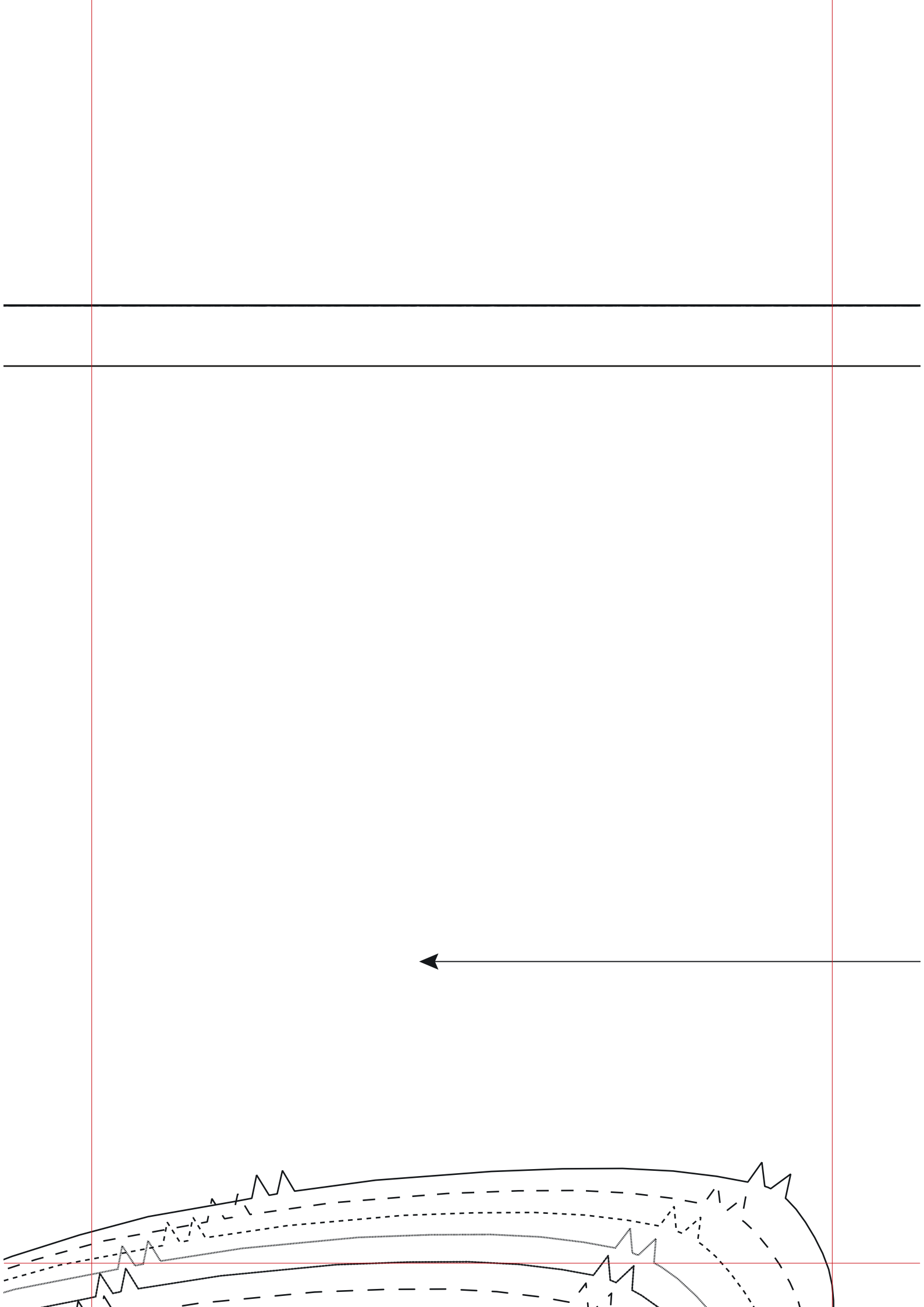
- 20
- ... 22
- - - 24
- · - · 26
- 28
- · - · 30





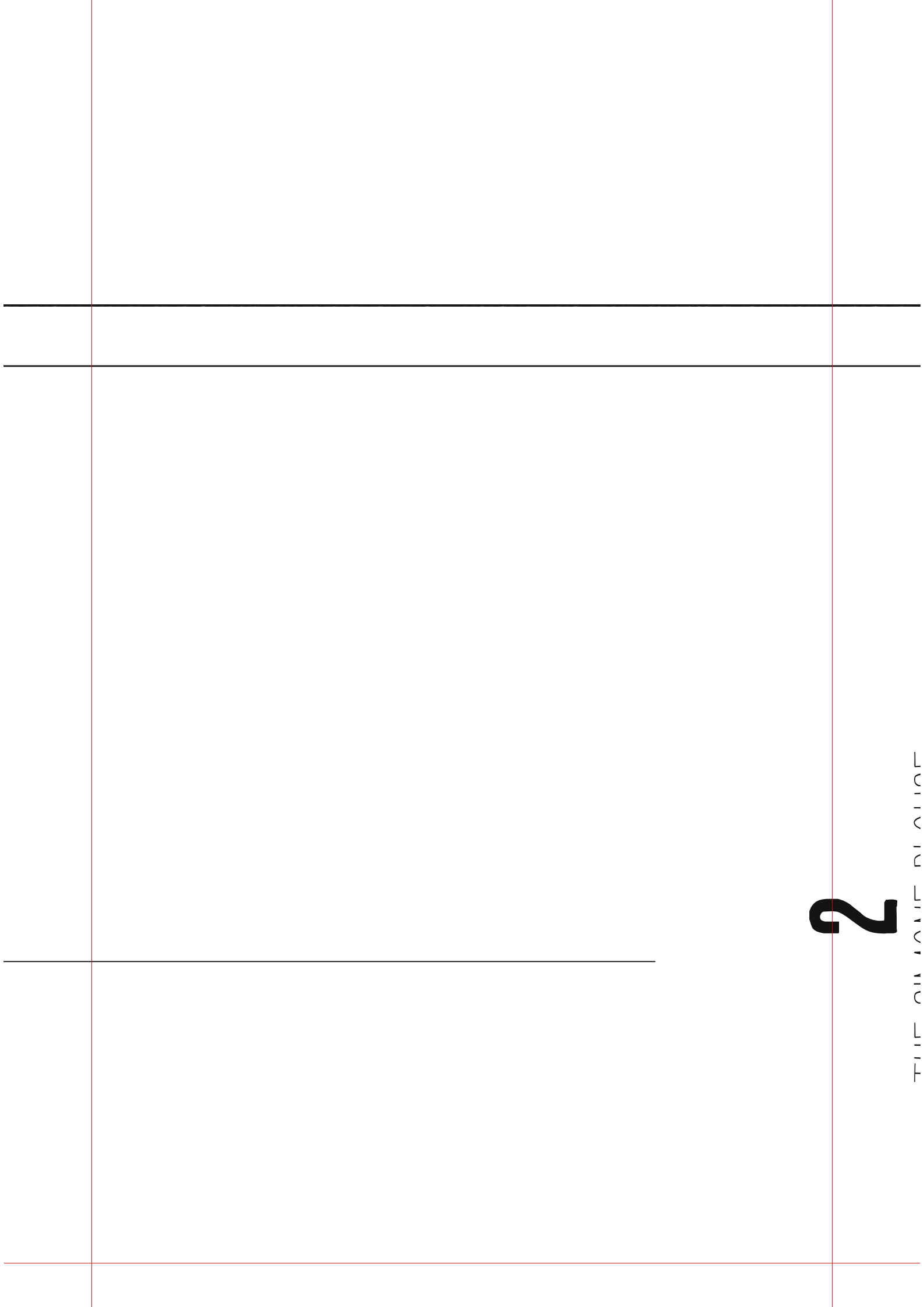






Centre Back
Cut on fold





2

THE SIMONE BLOUSE

Back

Cut one on fold

