



APPLIQUÉ TEMPLATES

Here's our breakdown of your bonus floral appliqué templates, plus a raw edge appliqué tutorial and project so you can put them to use!

FLOWER POWER

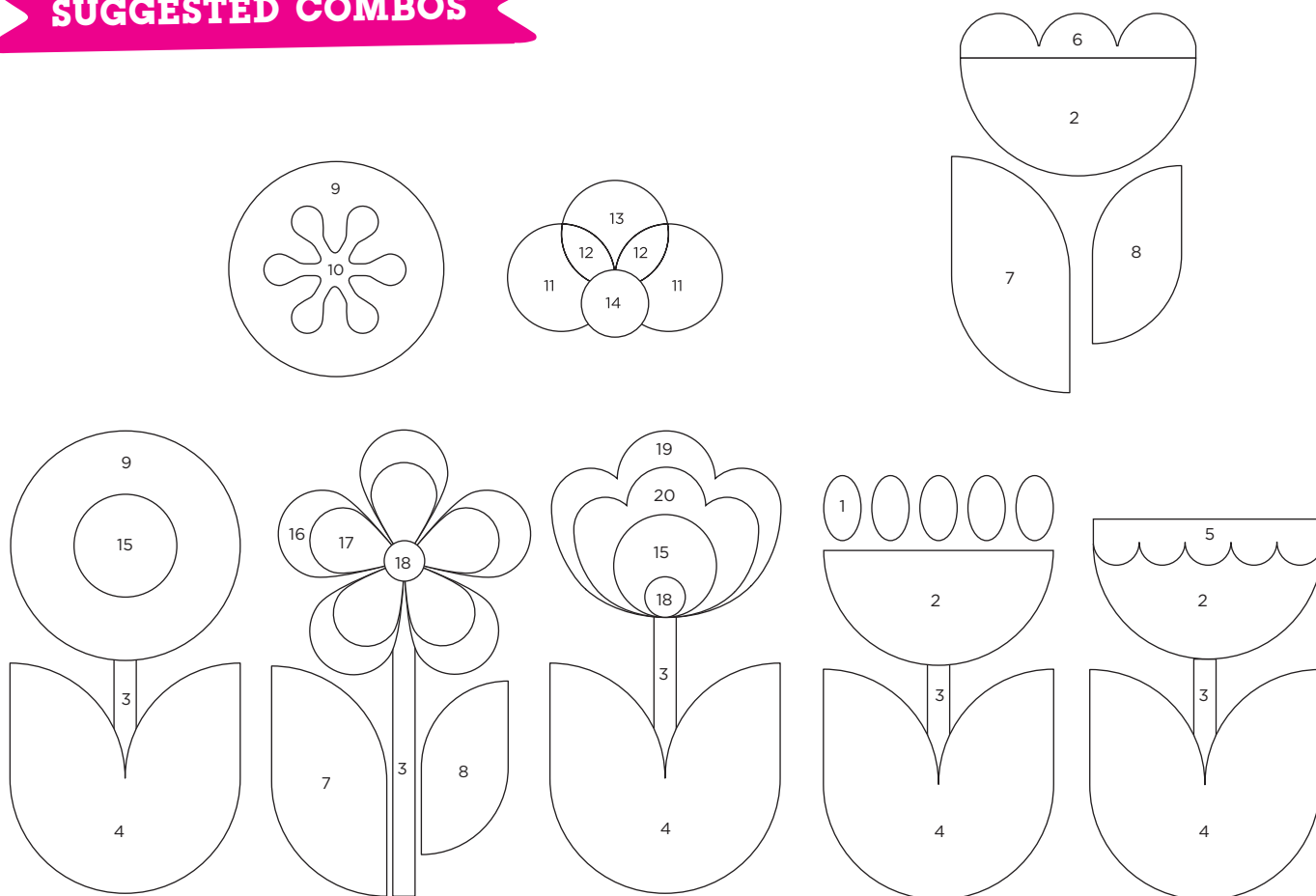
Fresh blooms abound with this pack of retro floral appliqué templates! Mix and match the set of 20 templates to create a flourishing fabric flower garden – see our inspo below!

As the weather gets chillier again, we've found ourselves dreaming of fresh florals and spring blooms of sunnier times. If you're yearning for your flower garden too, check out our blooming beautiful set of 20 appliqué templates in various retro floral designs. Keen to get started right away, but new to raw edge appliqué? Not to worry! Just check out Paula Steel's handy Technique Focus tutorial. It'll show you all you need to know to become a total pro at machine appliqué. Then, practise your piecing to perfection and allow the floral templates to take centre stage

with Paula's appliqué cushion tutorial! It's a super stash-friendly, scrap-happy project, encouraging you to take the plunge into your fabrics and show some love to even your tiniest fabric pieces.

If you fancy slowing it down with some calming hand stitching, why not take these templates for a spin on your sofa and indulge in some needle turn appliqué instead? Take yourself over to our website gathered.how/applique for handy beginner tips! Don't forget to tag @lovequiltingmag on Instagram in any snaps of your appliqué makes... we'd love to see!

SUGGESTED COMBOS



BEGINNER'S GUIDE TO: RAW EDGE APPLIQUÉ

You can use your set of 20 retro floral appliqué templates to gain confidence with machine appliqué, following **Paula Steel's** tutorial for two super easy methods !

TOP TIPS FOR MACHINE APPLIQUÉ:

- Don't use a heat erasable pen to mark out your templates, it will disappear when you iron it!
- Raw edge appliqué doesn't require seam allowances. If converting a hand appliqué project to a raw edge machine appliqué project, remove the seam allowance.
- If you are using light coloured fabric that will go on top of another piece, then you can get a better finish by using some iron-on interfacing. Press the interfacing onto the back of the fabric, before adding the Heat n Bond. This will prevent colours from showing through.

HOW TO DO RAW EDGE APPLIQUÉ

PREPARING YOUR APPLIQUÉ PIECES

- 1 Draw around or trace your template onto the paper side of the fusible fabric. Paula likes to use Heat n Bond Lite for machine appliqué (Fig A).
- 2 Cut around the drawn line roughly, leaving approx 1/8in, although you don't need to be exact.
- 3 Place the Heat n Bond on the wrong side of the fabric and, following the manufacturer's instructions, fuse it to the fabric, as shown in Fig B.
- 4 Leave to cool and then trim on the drawn line. Your piece of appliqué is now ready to adhere to your background fabric (Fig C).

PREPARING THE BACKGROUND

- 5 Prepare your background fabric by giving it a good press. If your background fabric is a lightweight fabric, you can also use some stabilizer, such as Stitch-n-Tear, to prevent the fabric from distorting as you add the appliqué stitches.

ADHERING THE APPLIQUÉ PIECES

- 6 Appliqué pieces are usually stuck down in a specific order detailed in the pattern. To stick down the first

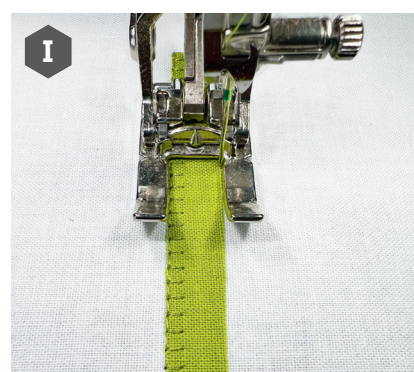
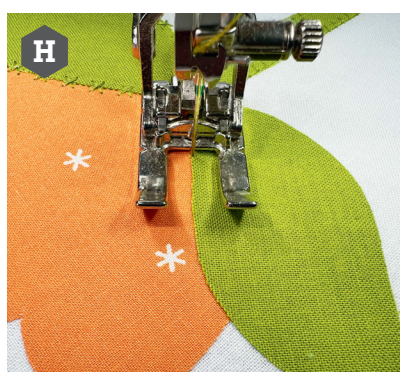
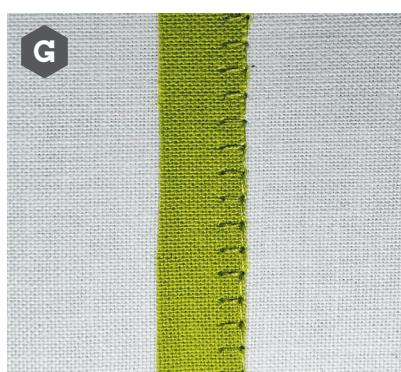
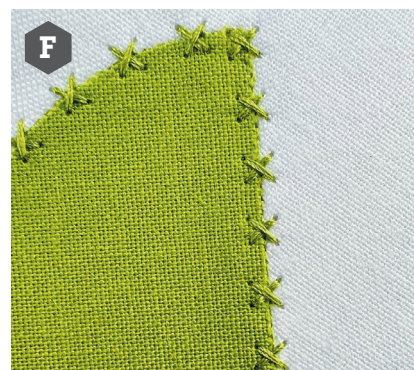
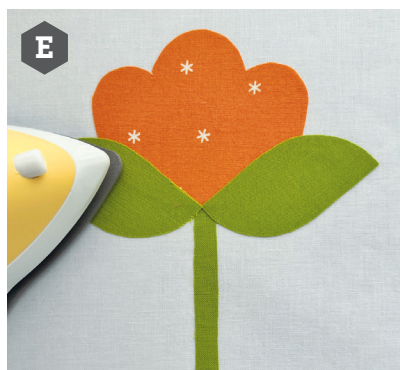
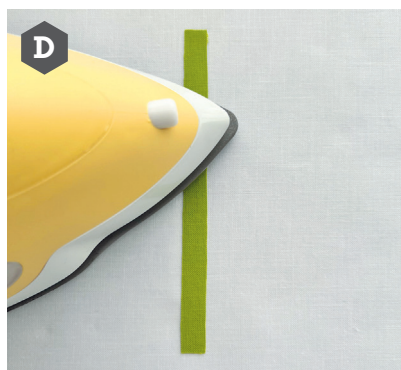
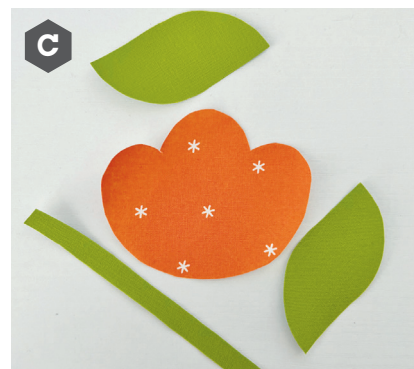
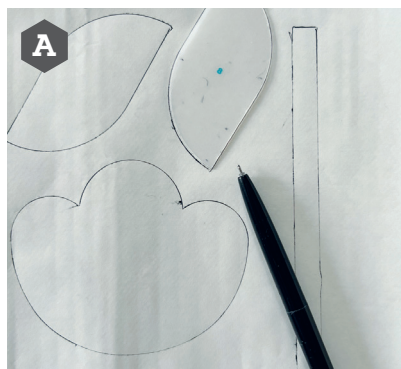
appliqué piece, peel back the paper from the Heat n Bond side, place fabric side up on top of the background fabric and press to adhere (Fig D).

- 7 Repeat the process in step 6 to stick down all the remaining pieces (Fig E). At this point, your appliqué is now ready to machine stitch.

MACHINE STITCHING APPLIQUÉ

- 8 Depending on your machine, you may have a choice of stitches in varying widths. Make sure you attach a wide foot, ideally an open foot so that you can easily see the edges of the fabric. Note that there are two main types of stitches:





■ Centred stitch: A stitch which is centred on the line and stitches equally to both sides, e.g a star or cross stitch (Fig F).

■ Side stitch: A stitch where the straight line is on the centre but it only stitches to one side, e.g. a blanket stitch (Fig G).

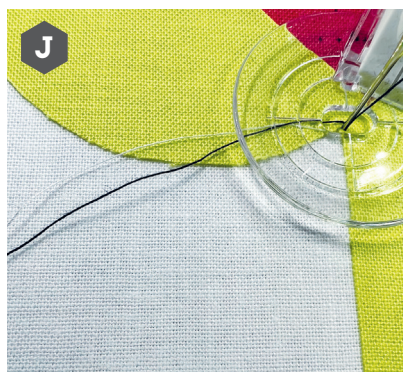
9 When choosing thread, go for something thicker as it will stand out more. If you want a subtle stitch line, choose a thin thread, such as Aurifil 80wt. If you would like some contrast in texture then use a thicker thread such as Aurifil 28wt.

Paula likes to use a combination of threads to add depth.

10 To start stitching, line up the edge of the appliqué with the centre of the foot. The centre marker on the foot will help you to keep it in line, as demonstrated in Fig H. If you are using a side stitch like a blanket stitch then (if your machine will allow) you can move the needle over to the edge of the foot and use this as your marker, as shown in Fig I.

11 Bring up the bobbin thread and then start stitching around the





appliqué shape. When sewing around a tight curve or corner, leave your needle down and lift your presser foot. Once it is lifted, you can manoeuvre the fabric without moving the needle. Once you have the fabric where it's needed, put the presser foot down and continue stitching.

12 When you come to the end of the appliqué shape, lock stitch and trim away any excess thread.

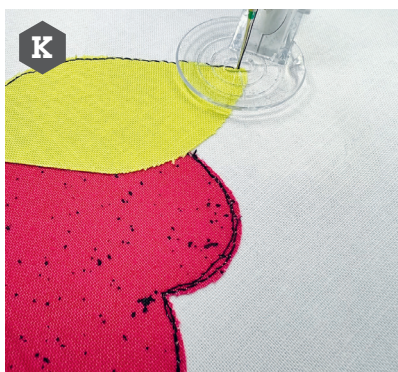
FREE MOTION APPLIQUÉ

13 Attach your free motion foot and drop the machine feed dogs before you start. Paula recommends using a free motion foot with a transparent base so it is easy to see the edge of the fabric.

14 When choosing thread, you can choose a dark or contrasting thread which will look like sketched lines once finished. Alternatively, choose a fine, matching thread to blend in with the fabric, if you would prefer a more subtle look.

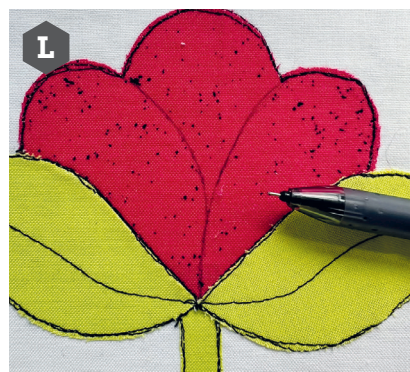
15 Place the needle over the starting point, approx 1/8in away from the edge. Use your hand wheel to bring up the bobbin thread (Fig J).

16 As you are using the free motion foot and the feed dogs are down, you need to feed the fabric under the needle. Moving the fabric smoothly under the needle is the key. Stitch around the design twice to get a sketched look (Fig K). Don't



worry if the lines aren't exactly in the same place.

17 Once you have stitched all the way around twice you can choose



to add some details to the fabric. To add extra details, you can mark them out in an erasable pen and then stitch along the drawn lines, as shown in Fig L.



PROJECT:

APPLIQUÉ
CUSHION

YOU WILL NEED

- Yellow fabrics: approx 4in square scraps
- Pink fabrics: approx 4in square scraps
- Orange fabrics: approx 2in square scraps
- Purple fabric: approx 4in x 8in
- Green leaves fabric: one (1) fat eighth
- Green stem fabric: one (1) fat sixteenth
- Background fabric: one (1) fat quarter
- Orange felt: 2in square
- Backing fabric: ½yd
- Batting: 20in square
- Fusible web: one (1) fat quarter
- One (1) each of Appliqué Template 2, 3, 4, 6, 8, 14 and 16 that came with this issue

FINISHED SIZE

- 19in square

NOTES

- Seam allowances are ¼in, unless otherwise stated.
- Press seams open, unless otherwise instructed.
- Press fabrics well before cutting.
- Press well after sewing each seam.
- RST = right sides together.
- WST = wrong sides together.

CUTTING OUT

- 1 From the yellow fabric scraps cut:
 - Four (4) 4in squares.
- 2 From the pink fabric scraps cut:
 - Four (4) 4in squares.
- 3 From the purple fabric scraps cut:
 - Four (4) 4in x 2in strips.
- 4 From the orange fabric scraps cut:
 - Four (4) 2in squares.



Practise your slow stitching with this hand sewn make!

- 5 From the background fabric cut:
 - One (1) 20in square.

- 6 For the backing fabric cut:
 - Two (2) 19in x 14in rectangles.

PREPARING THE APPLIQUÉ PIECES

- 7 Using the retro floral templates and the instructions in steps 1–4 of the tutorial, prepare the following appliqué pieces:

- Yellow: four Template 4.
- Pink: four Template 2.
- Purple: four Template 6.
- Orange: four Template 16.
- Green stems: eight Template 3.
- Green leaves: four Template 8 and four reverse Template 8.
- Orange felt: one Template 14.

LAYING OUT THE APPLIQUÉ PIECES

- 8 Fold the background fabric in half twice and then finger press to create quarter crease lines. Once it has been pressed, open out again.

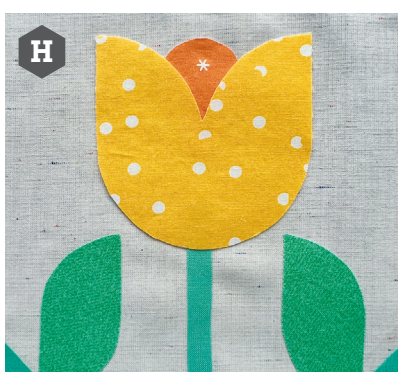
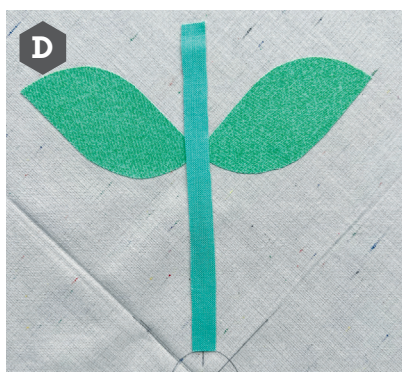
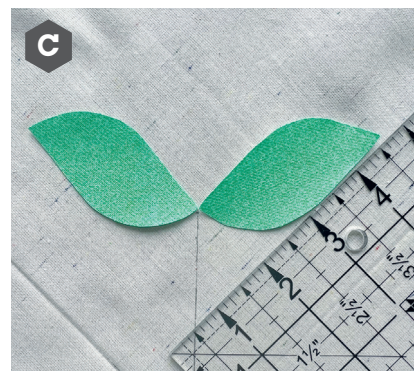
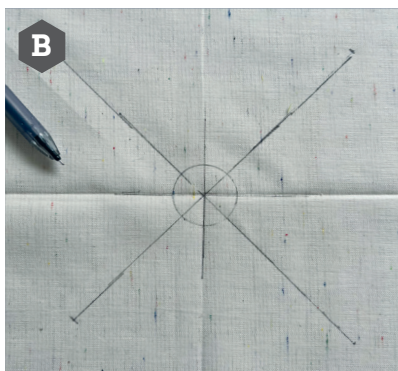
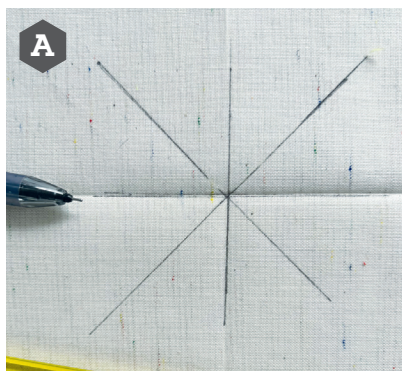
- 9 Using an erasable pen, mark out the quarter crease lines and draw lines on the diagonal half-way between the centre lines (Fig A).

- 10 Using the plastic circle template (Template 14) mark a circle around the centre. Extend the diagonal lines to 3½in from the centre point – this is where the appliqué leaves will be (Fig B).

- 11 Place a green leaf and a reversed green leaf at the end of the 3½in line. Line up the flatter edge of the appliqué piece approx 1¼in away from the centre creases. Remove the backing paper and press to fix in place, as shown in Fig C.

- 12 Place a green stem along the line starting at the edge of the circle and passing over where the leaves meet. Remove the paper and press in place to fix (Fig D). Place a pink Template 2 at the top of the stem and place a purple Template 6 along the long edge of the pink flower. Remove the paper and press in place to fix, as shown in Fig E.

- 13 Repeat the process detailed in steps 11–12 to place and fix the remaining three flowers (Fig F). Place the remaining four green stems along the quarter creased lines, starting at the edge



of the marked circle. Remove the paper and press in place to fix.

14 Mark the stem piece $4\frac{1}{4}$ in from the centre (Fig G). Place the yellow flower on this marked line. Before pressing in place, slip the orange Template 16 under the top of the yellow flower (Fig H). Remove the paper and then press in place to fix.

15 Repeat the process detailed in step 14 with the remaining three yellow flowers. To finish fixing down the appliqué pieces, place the orange felt circle (Template 14) over the centre and fix in place.

16 Using a method of your choice from the Technique Focus tutorial, stitch around the appliqué pieces. Paula used a mixture of different machine stitches and thread weights in order to add texture.

FINISHING THE CUSHION

17 Place the appliqué piece on top of the batting and then proceed to quilt as desired. Paula quilted circles and free motion stippling. Then trim it back to 19in square, making sure the design is centred.

18 Press under one long edge of a backing piece by $\frac{1}{4}$ in. Press

under $\frac{1}{4}$ in again to enclose the raw edge, then carefully topstitch in place to secure. Repeat this process with the other backing piece.

19 With the cushion top right side up, layer the backing pieces on top, both with the right side down. Align the raw edges, with the hemmed edges overlapping in the middle. Pin or clip in place.

20 Sew around the outer edge. Clip the corners, turn right side out and then press to finish.



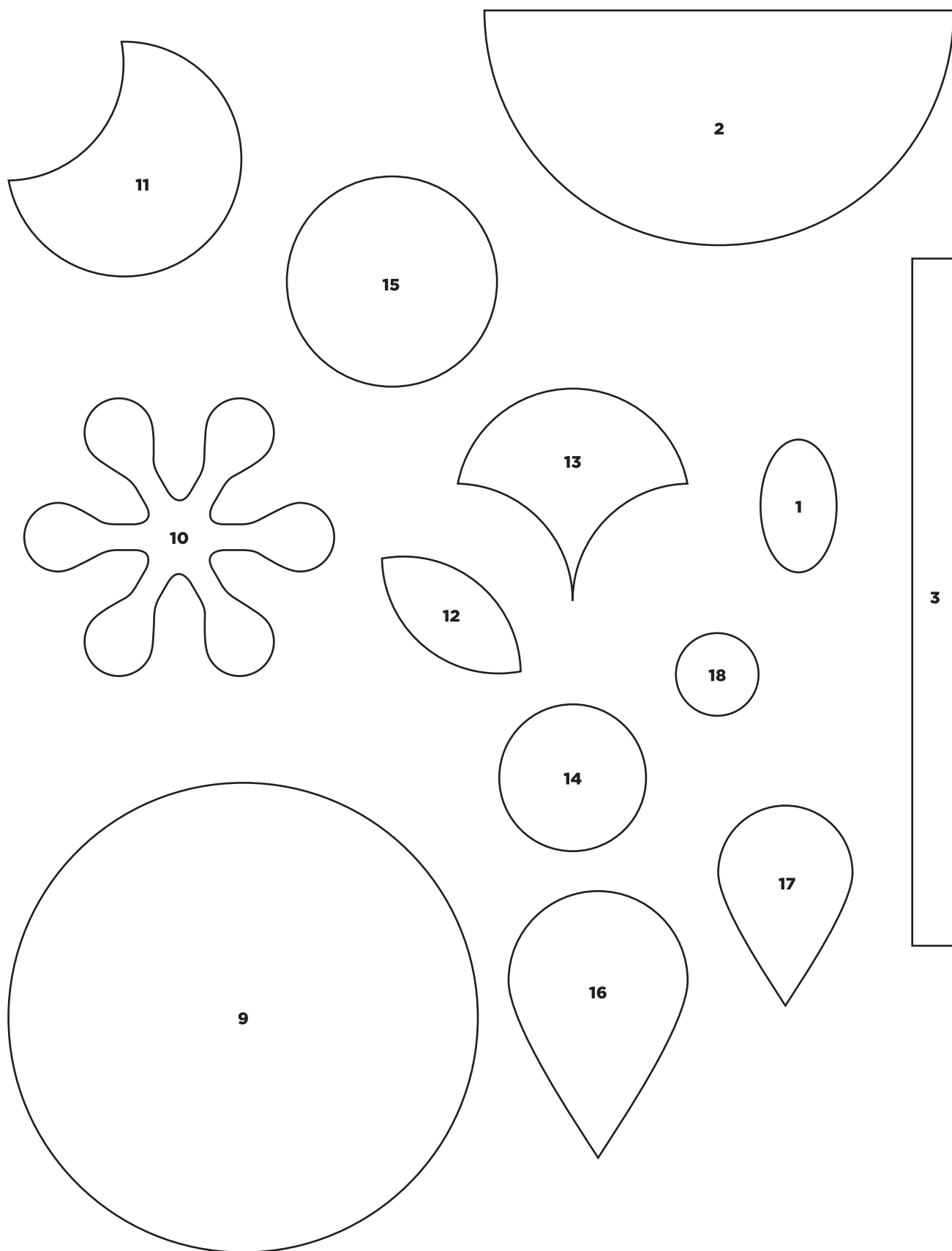
Paula Steel

Paula loves fabric, cats and rainbow colour palettes. Her 'inner nerd' secretly enjoys the maths behind designing quilts!

► paulasteelquilts.com Instagram: [paulasteelquilts](https://www.instagram.com/paulasteelquilts)

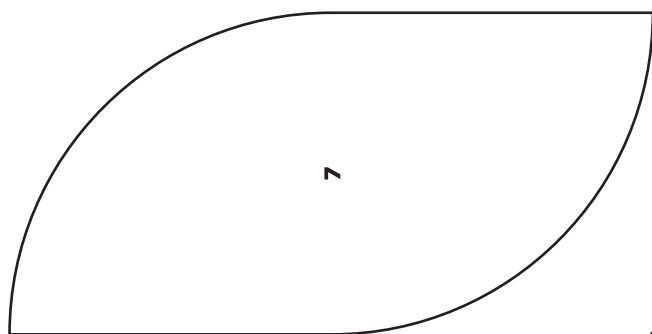
APPLIQUÉ TEMPLATES

Templates 1, 2, 3, 9, 10, 11, 12, 13, 14, 15, 16, 17 and 18
ACTUAL SIZE

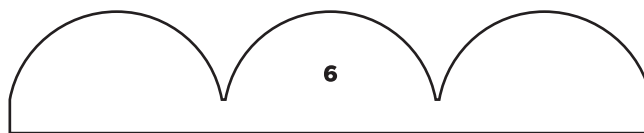


APPLIQUÉ TEMPLATES

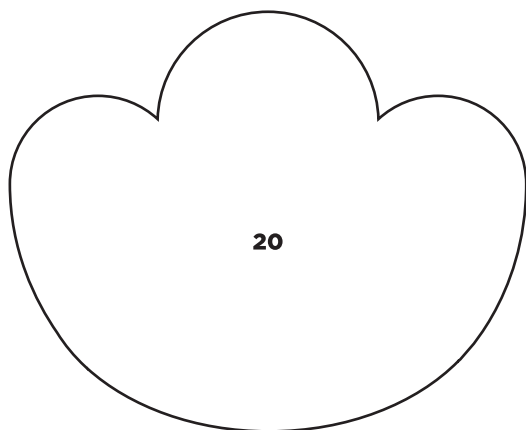
Templates 4, 5, 6, 7, 8, 19 and 20
ACTUAL SIZE



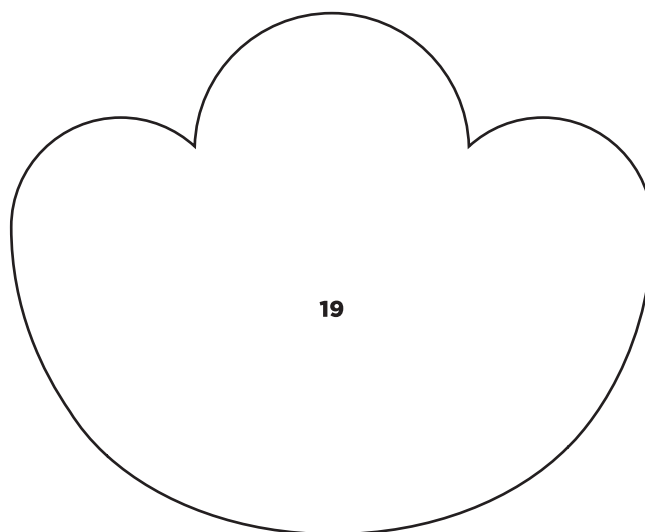
7



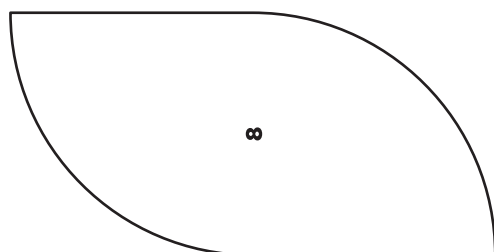
6



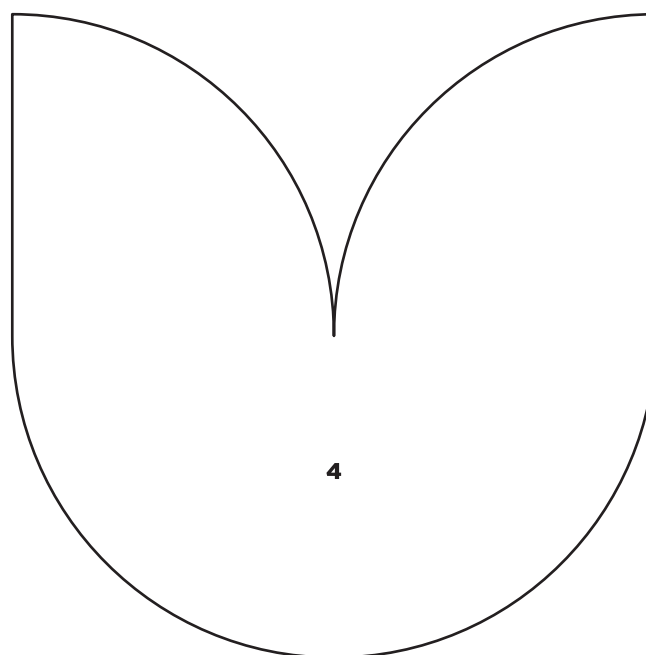
20



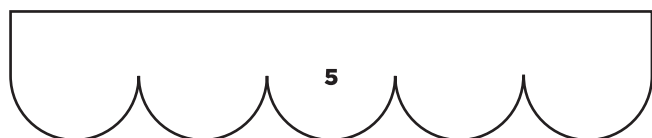
19



8



4



5